

MICRO SWISS M3101 FlowTech Hotend for Creality



MICRO SWISS M3101 FlowTech Hotend for Creality Installation Guide

[Home](#) » [MICRO SWISS](#) » MICRO SWISS M3101 FlowTech Hotend for Creality Installation Guide 

Contents

- [1 MICRO SWISS M3101 FlowTech Hotend for Creality](#)
- [2 Product Information](#)
- [3 Product Usage Instructions](#)
- [4 What's in the box](#)
- [5 INSTALLATION INSTRUCTIONS](#)
- [6 Documents / Resources](#)
 - [6.1 References](#)
- [7 Related Posts](#)



MICRO SWISS M3101 FlowTech Hotend for Creality



Product Information

Specifications:

- SKU: M3101
- Product: Micro Swiss FlowTech™ Hotend
- Compatibility: Creality K1 / K1 Max
- Nozzle Size: 0.4mm
- Includes: Silicone Sock, Heater Core, Copper Thermal Adapter, Titanium Mounting Screw (2x)

Product Usage Instructions

Installation:

1. Ensure you have the necessary tools: 1.5mm Allen wrench, 2.0mm Allen wrench, 7mm wrench.
2. Unscrew the fan shroud using the 2.0mm Allen wrench.
3. Remove the fan shroud carefully to access the hotend.
4. Proceed with steps 4 to 11 for installation.

Frequently Asked Questions (FAQ)

- Q: Can I use a different nozzle size with this hotend?

A: The Micro Swiss FlowTech™ Hotend is designed for use with a 0.4mm nozzle size. Using a different size may affect performance.

- Q: Do I need any additional accessories for installation?

A: The package includes all necessary components for installation. However, having basic tools on hand is recommended for a smooth setup process.

Tools Required:

- 1.5mm Allen wrench
- 2.0mm Allen wrench
- 7mm wrench

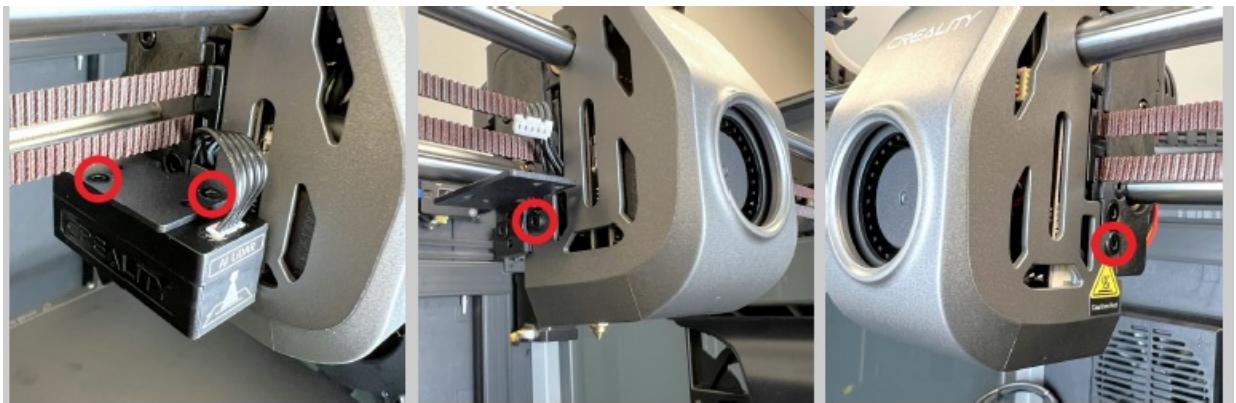
What's in the box

- Silicone Sock
- Heater Core
- 0.4mm Nozzle
- Copper Thermal Adapter
- Titanium Mounting Screw (2x)

INSTALLATION INSTRUCTIONS

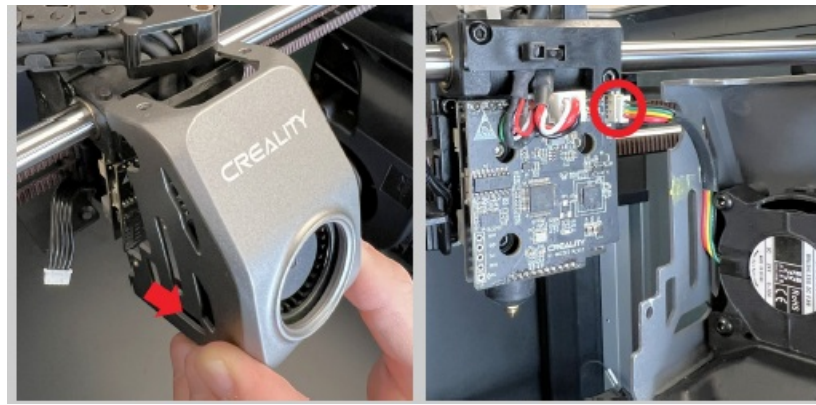
1. UNSCREW THE FAN SHROUD (Creality K1 Max Only)

- Remove the two screws holding the LiDAR sensor. (2.0mm Allen Wrench)
- Remove the screws from both sides of the fan shroud. (2.0mm Allen Wrench)



2. REMOVE THE FAN SHROUD

- Pivot the bottom of the fan shroud forward and then pull the shroud up off of the two stubs.
- Disconnect the part cooling fan connector from the breakout board

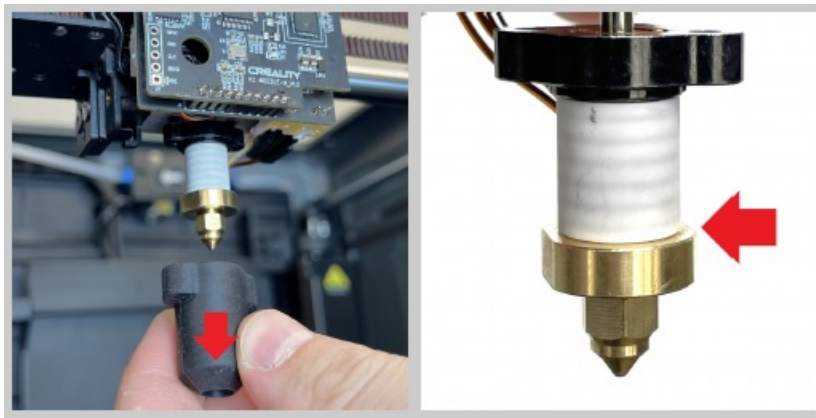


3. REMOVE THE SILICONE SOCK

For your safety – verify the hotend is at room temperature \triangle before touching it.

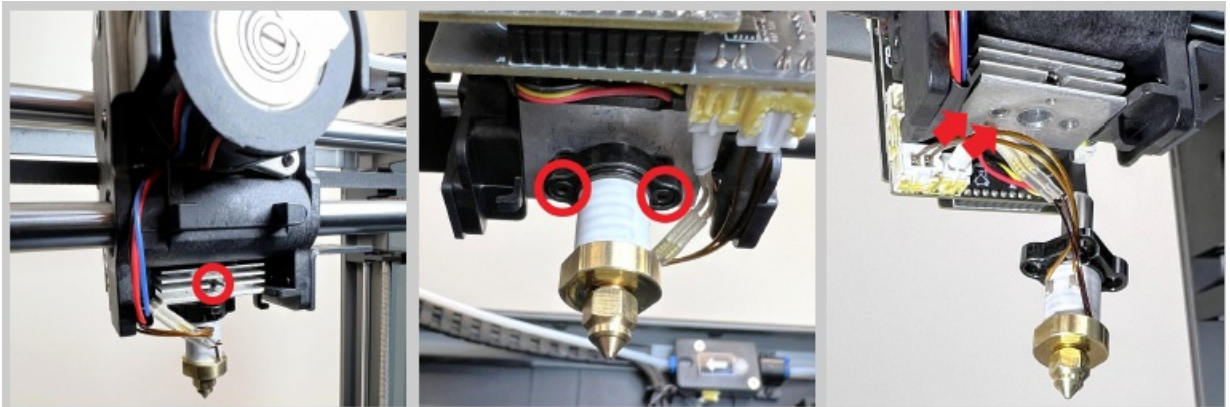
- Pull the silicone sock off of the heater core.

There is a ridge near the bottom of the stock hotend so the silicone sock will need to be pinched and pulled over the ridge.



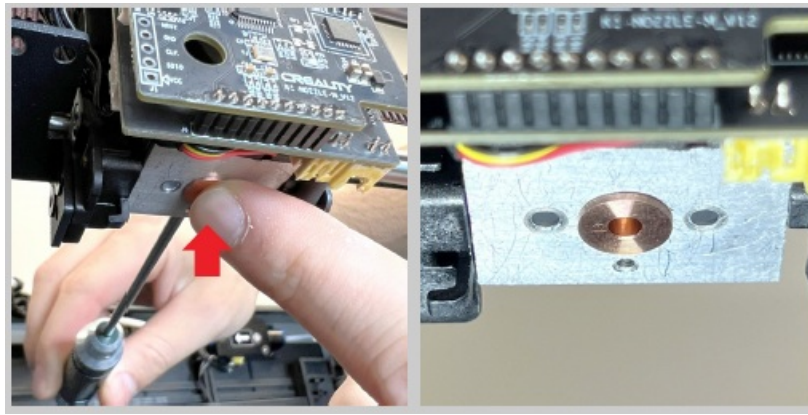
4. REMOVE THE HOTEND

- Loosen the set screw on the back of the cooling block. (2.0mm Allen wrench)
- Remove the two screws holding the hotend. (1.5mm Allen wrench)
- Disconnect the heater and thermistor connectors.



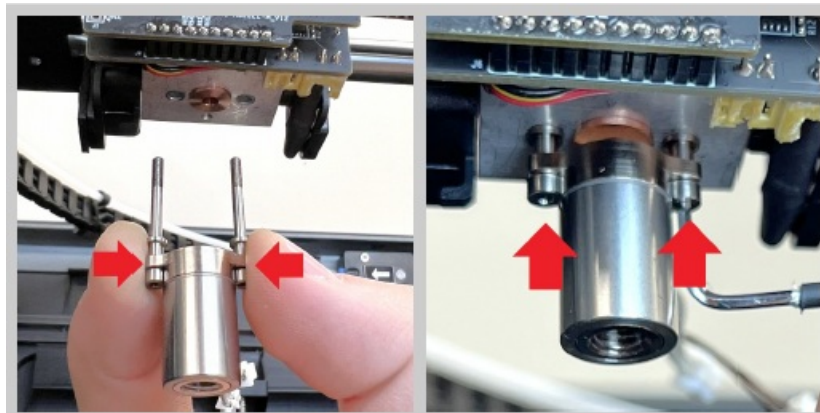
5. INSTALL THE THERMAL ADAPTER

- Insert the copper thermal adapter into the cooling block.
- Tighten the set screw on the back of the cooling block while pressing the copper thermal adapter up. (2.0mm Allen wrench)



6. INSTALL THE HEATER CORE

- While holding the heater core along with the two titanium mounting screws on each side, push the screws into the cooling block. The heater core wires should face the rear of the 3D printer.
- Tighten the screws until the shoulder bottoms out against the cooling block. (1.5mm Allen wrench) The heater core will still be free to wobble around even after tightening the two screws.

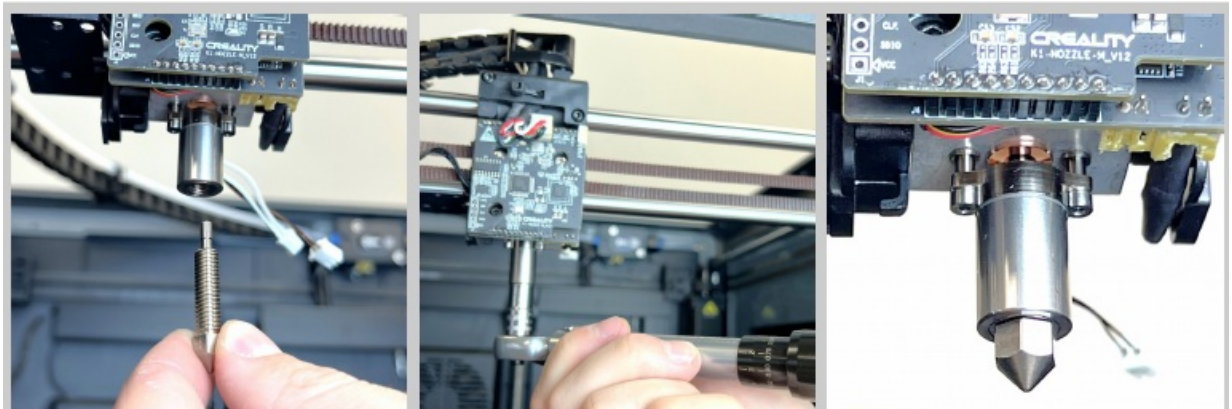


7. INSTALL THE NOZZLE

- Tighten the nozzle until it is snug. (7mm wrench)

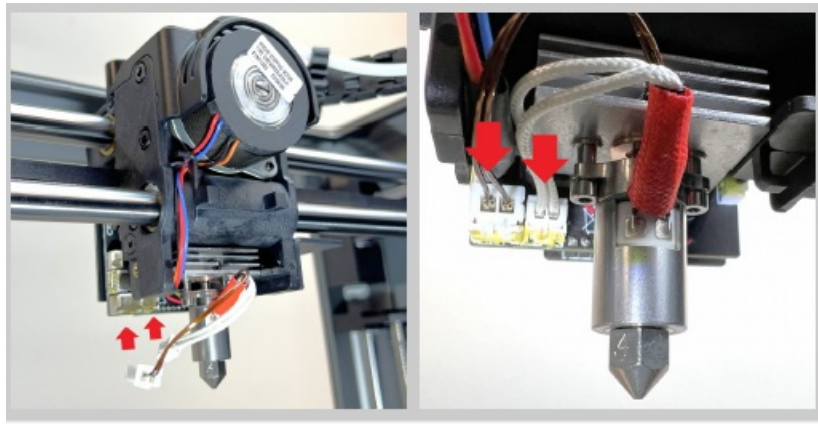
Recommended torque: 15 inch-pounds / 1.7 Newton Meters.

There is no need to heat the hotend before tightening the FlowTech nozzle.



8. CONNECT THE HEATER CORE

- Attach both the heater and thermistor connectors to the matching ports on the breakout board.



9. INSTALL THE SILICONE SOCK

- Align the cutout slot in the silicone sock with the cables located on the back of the heater core.
- Push the silicone sock up until it wraps around the top of the heater core.



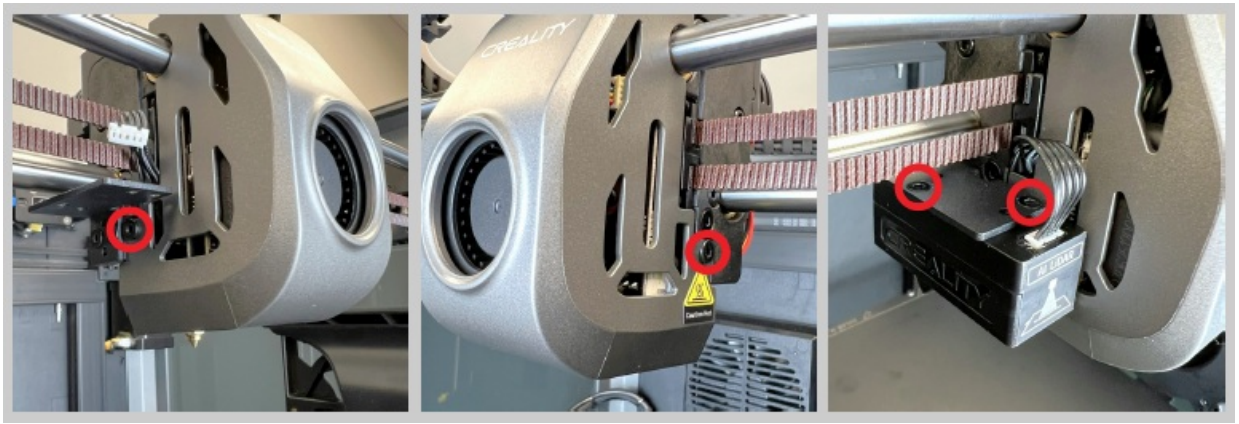
10. REATTACH THE FAN SHROUD

- Connect the fan cable to the breakout board.
- Align the top of the fan shroud with the studs on the top of the print head.
- Pivot the bottom of the fan shroud back until the shroud is seated properly.



11. SECURE THE FAN SHROUD AND SENSOR

- Reinstall the screws holding the left and right side of the fan shroud. (2.0mm Allen wrench) (Creality K1 Max Only)
- Reattach the LiDAR sensor to the mounting bracket using two screws. (2.0mm Allen wrench)



Documents / Resources



[MICRO SWISS M3101 FlowTech Hotend for CREALITY](#) [pdf] Installation Guide
M3101, M3101 FlowTech Hotend for CREALITY, FlowTech Hotend for CREALITY, Hotend for CREALITY, CREALITY

References

- [User Manual](#)

[Manuals+](#), [Privacy Policy](#)

This website is an independent publication and is neither affiliated with nor endorsed by any of the trademark owners. The "Bluetooth®" word mark and logos are registered trademarks owned by Bluetooth SIG, Inc. The "Wi-Fi®" word mark and logos are registered trademarks owned by the Wi-Fi Alliance. Any use of these marks on this website does not imply any affiliation with or endorsement.