



MICRO SWISS K1 FlowTech Hotend Installation Guide

[Home](#) » [MICRO SWISS](#) » MICRO SWISS K1 FlowTech Hotend Installation Guide 



Contents

- [1 K1 FlowTech Hotend](#)
- [2 INSTALLATION INSTRUCTIONS](#)
- [3 What's in the box:](#)
- [4 Documents / Resources](#)
 - [4.1 References](#)

K1 FlowTech Hotend



Micro Swiss FlowTech™ Hotend for Creality K1 / K1 Max

INSTALLATION INSTRUCTIONS

Tools Required:

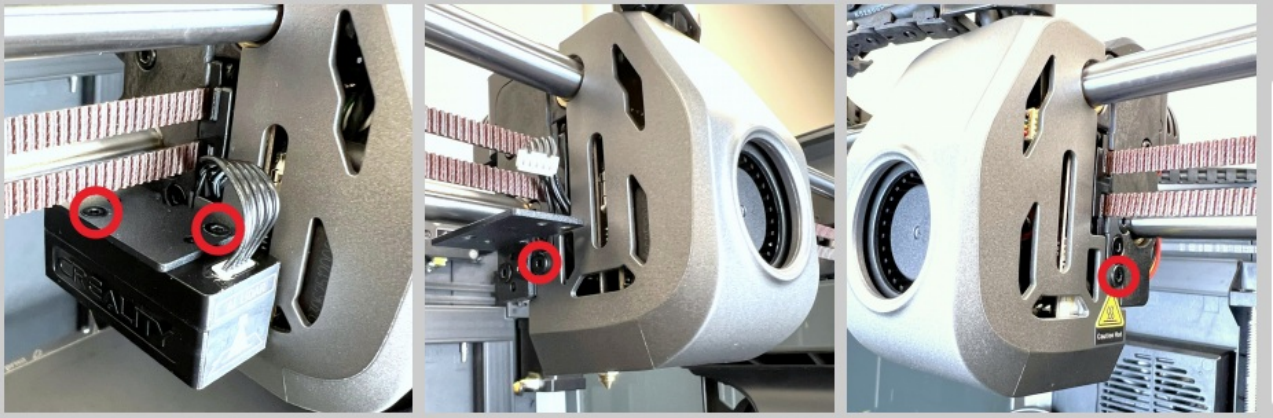
1.5mm Allen wrench
2.0mm Allen wrench

What's in the box:

Silicone Sock
Heater Core
0.4mm Nozzle
Copper Thermal Adapter
Titanium Mounting Screw (2x)

UNSCREW THE FAN SHROUD

STEP 1



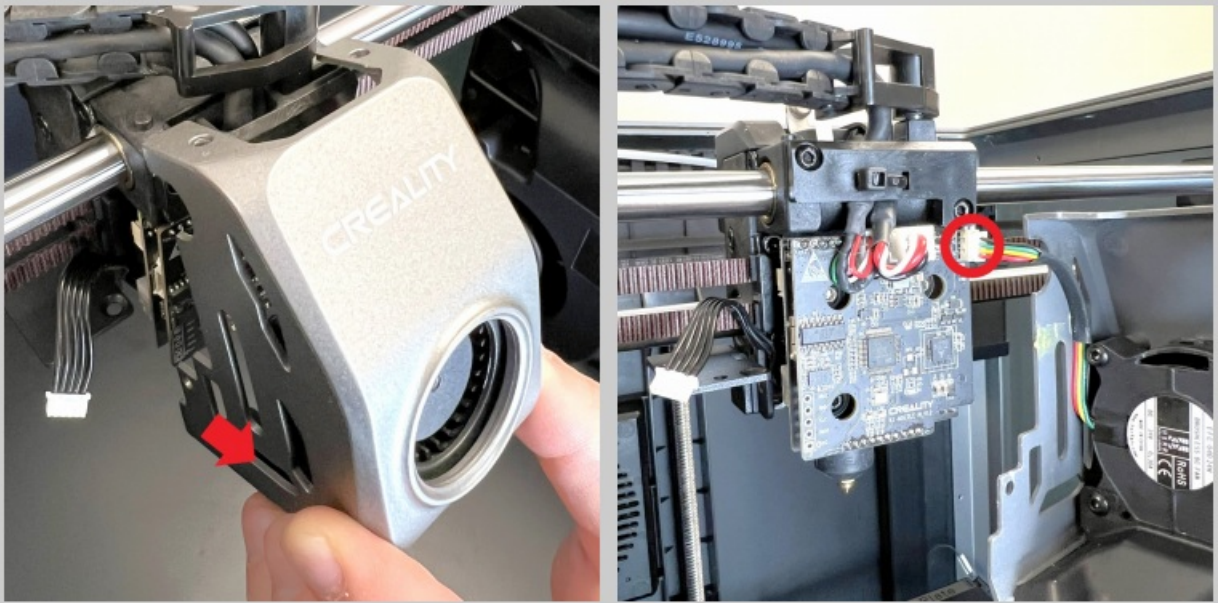
(Creality K1 Max Only)

Remove the two screws holding the LiDAR sensor (2.0mm Allen Wrench)

Remove the screws from both sides of the fan shroud (2.0mm Allen Wrench)

REMOVE THE FAN SHROUD

STEP 2

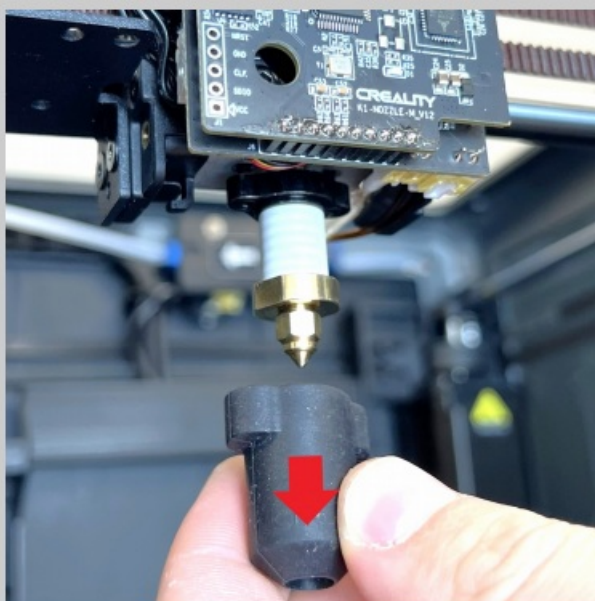


Pivot the bottom of the fan shroud forward and then pull the shroud up off of the two stubs

Disconnect the part cooling fan connector from the breakout board

REMOVE THE SILICONE SOCK

STEP 3

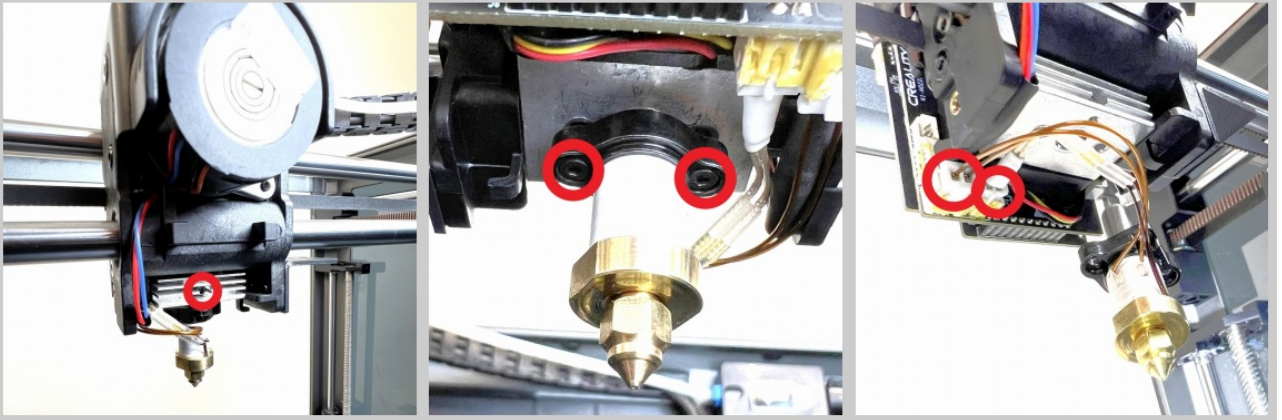


For your safety – verify the hotend is at room temperature before touching it

Pull the silicone sock off of the heater core There is a ridge near the bottom of the stock hotend so the silicone sock will need to be pinched and pulled over the ridge

REMOVE THE HOTEND

STEP 4

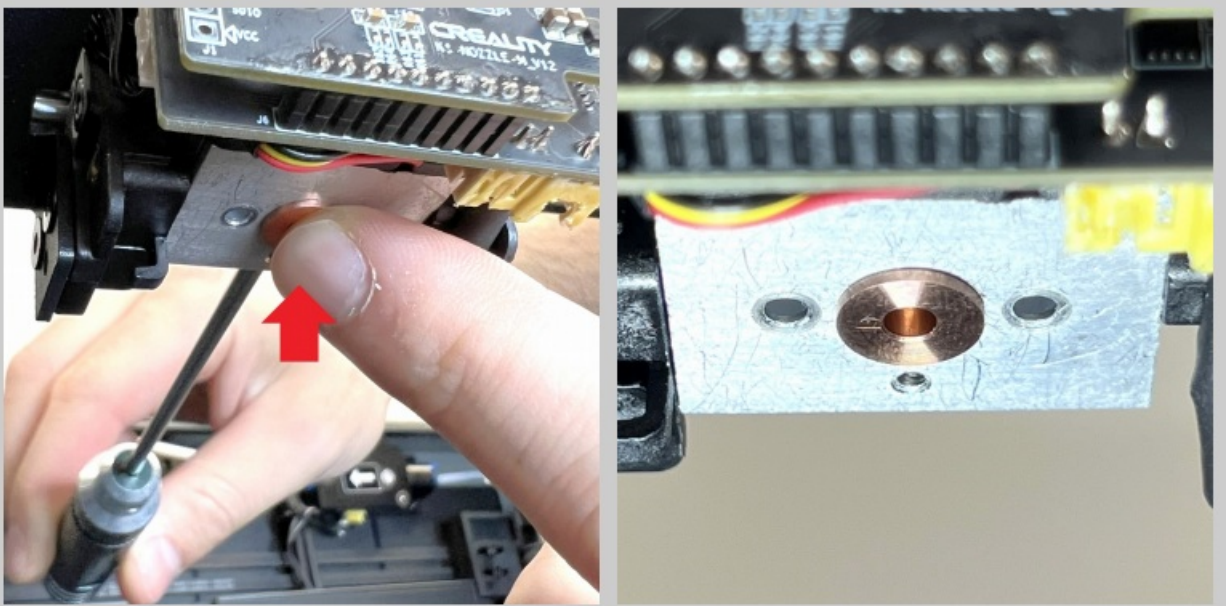


Loosen the set screw on the back of the cooling block (2.0mm Allen wrench)

Remove the two screws holding the hotend (1.5mm Allen wrench) · Disconnect the heater and thermistor connectors

INSTALL THE THERMAL ADAPTER

STEP 5

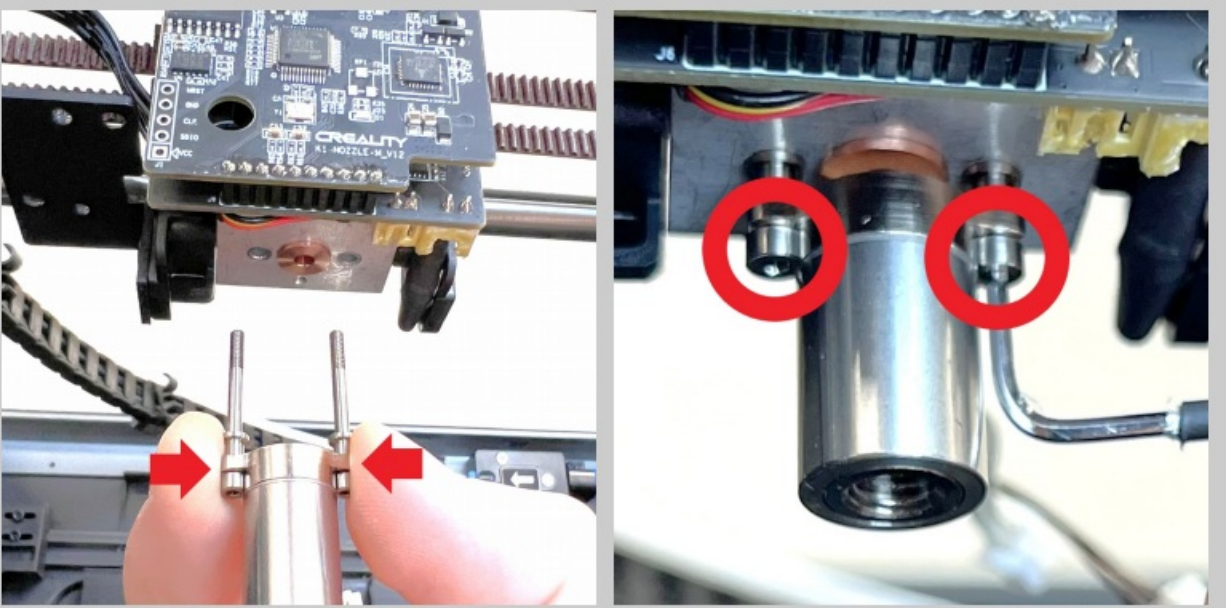


Insert the Copper Thermal Adapter into the cooling block

Tighten the set screw on the back of the cooling block while pressing the Copper Thermal Adapter up (2.0mm Allen wrench)

INSTALL THE HEATER CORE

STEP 6

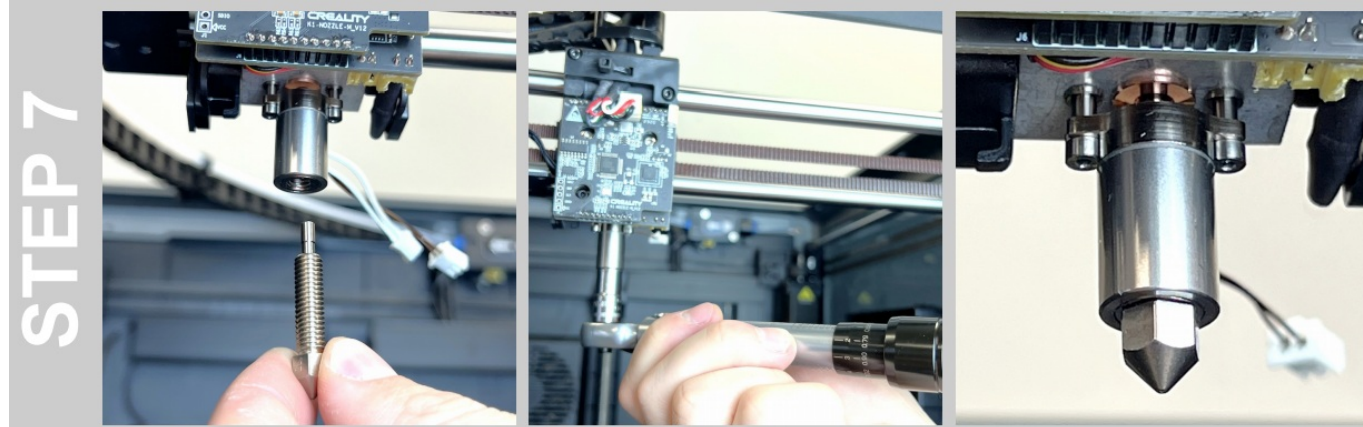


While holding the heater core along with the Titanium Mounting Screws on each side, push the screws into the Cooling block The heater core wires should face the rear of the 3D printer

Tighten the screws until the shoulder bottoms out against the cooling block (1.5mm Allen wrench)

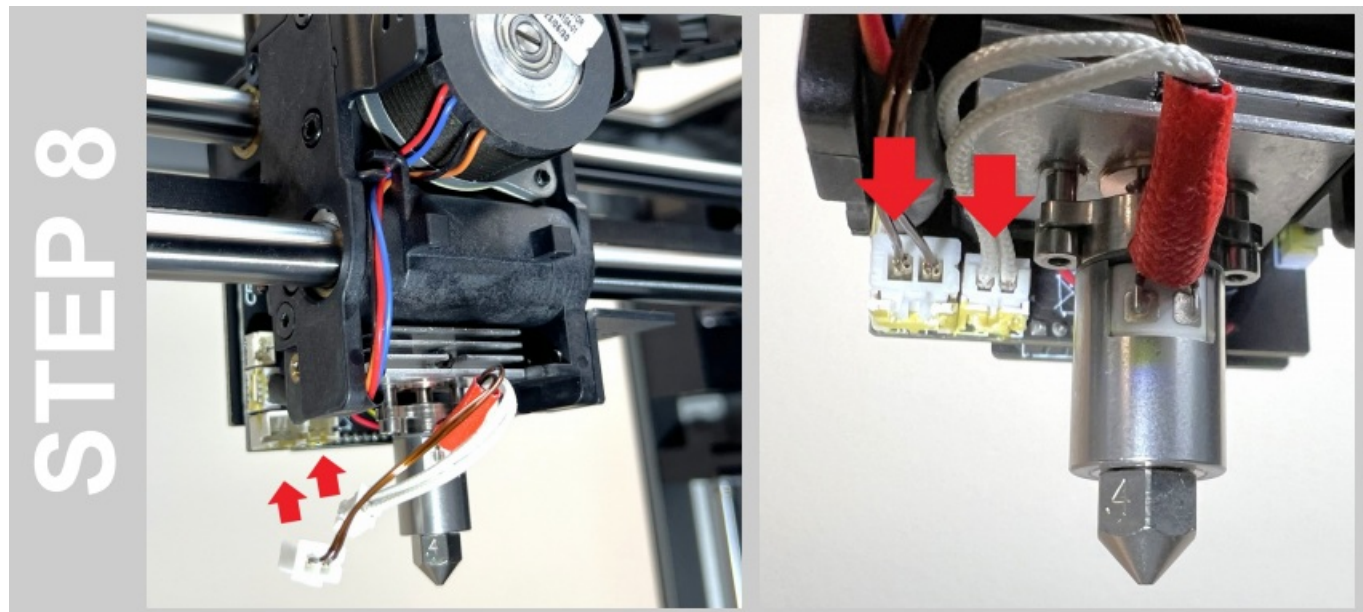
The heater core will still be free to wobble around even after tightening the two screws

INSTALL THE NOZZLE



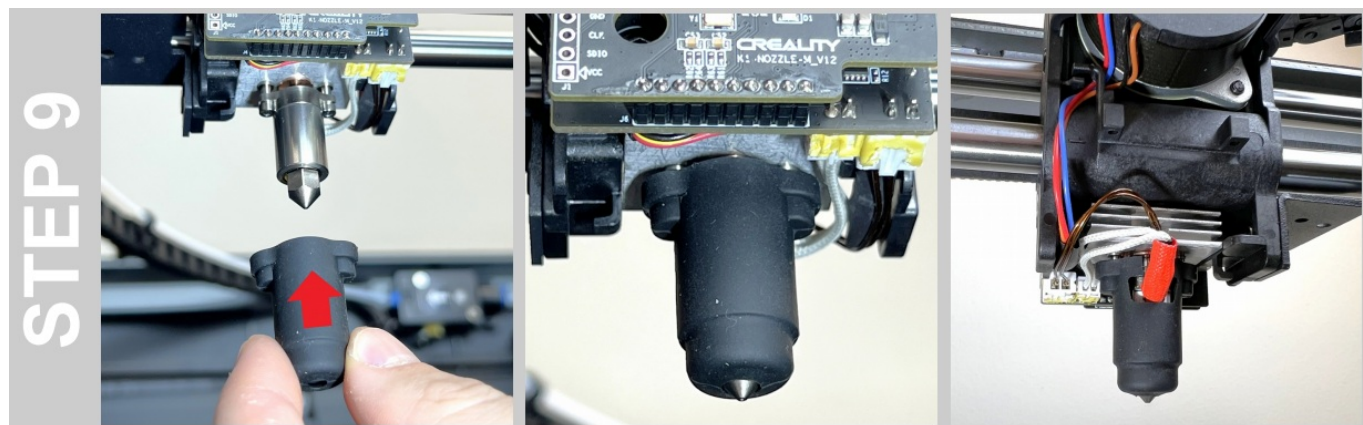
Tighten the nozzle until it is snug (15 inch-pounds) There is no need to heat the hotend before tightening the FlowTech nozzle

CONNECT THE HEATER CORE



Attach both the heater and thermistor connectors to the matching ports on the breakout board

INSTALL THE SILICONE SOCK



Align the cutout slot in the silicone sock with the cables located on the back of the heater core
Push the silicone sock up until it wraps around the top of the heater core

REATTACH THE FAN SHROUD

STEP 10



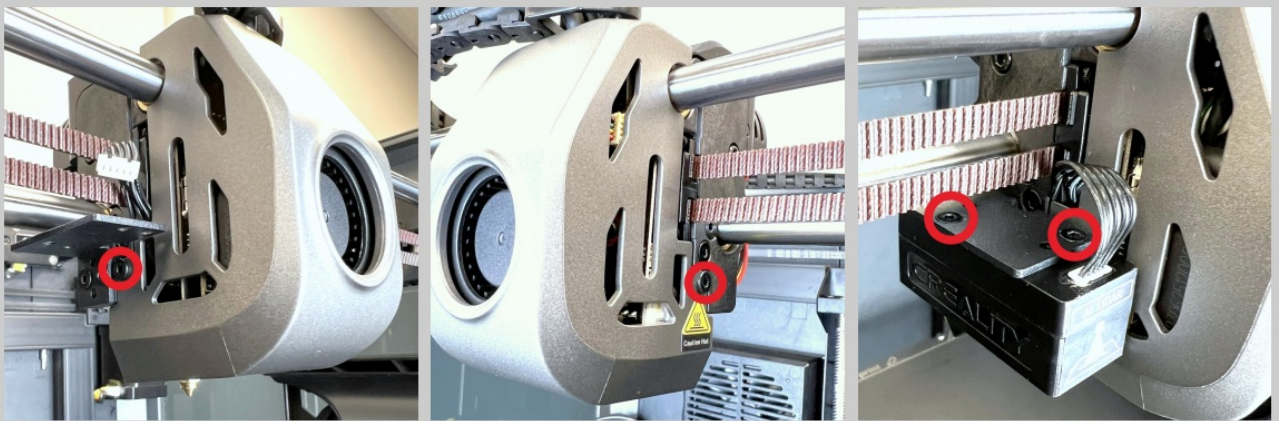
Connect the fan cable to the breakout board

Align the top of the fan shroud with the studs on the top of the print head

Pivot the bottom of the fan shroud back until the shroud is seated properly

SECURE THE FAN SHROUD AND SENSOR

STEP 11



Reinstall the screws holding the left and right side of the fan shroud (2.0mm Allen wrench)

(Creality K1 Max Only)

Reattach the LiDAR sensor to the mounting bracket using two screws (2.0mm Allen wrench)



Documents / Resources



[MICRO SWISS K1 FlowTech Hotend](#) [pdf] Installation Guide
K1 FlowTech Hotend, K1, FlowTech Hotend, Hotend

References

- [User Manual](#)