

MICRO CONTROL SYSTEMS APP135 Graphics Touch Screen Instructions

Contents

- [1 MICRO CONTROL SYSTEMS APP135 Graphics Touch Screen](#)
- [2 Product Information](#)
- [3 Frequently Asked Questions](#)
- [4 INSTALLING GRAPHICS ON A RESISTIVE TOUCHSCREEN](#)
- [5 QUICK INSTALL ON MCS-TOUCH-15.4 CAPACITIVE TOUCHSCREEN](#)
- [6 REPLACING GRAPHICS FOR CAPACITIVE TOUCH](#)
- [7 TESTING THE GRAPHICS](#)
- [8 Documents / Resources](#)
 - [8.1 References](#)
- [9 Related Posts](#)



MICRO CONTROL SYSTEMS APP135 Graphics Touch Screen

Product Information

Specifications

- Product Name: MCS Touchscreen and Graphics System
- Version: 1.2
- Manufacturer: Micro Control Systems, Inc.
- Touchscreen Types: Resistive and Capacitive

Quick Install on MCS-TOUCH-15.4 Capacitive Touchscreen

1. You will need to unzip the Rev X Graphics folder supplied.
2. Copy the xxxxxx folder that is inside the unzipped folder and paste it onto a flash drive.
3. Insert the flash drive into the back of the touchscreen.
4. MCS USB Tool will pop up, select open in file explorer.
5. Select the GRAPHICS folder on the left side.
6. Press and hold, then release the stylus on the xxxxx folder, then select move to trash if you have not already deleted the folder currently on there.

7. Select copy and paste actions following the on-screen prompts.

Frequently Asked Questions

- **How can I contact support for additional information?**
 - You can contact support via email at support@mcscontrols.com or by phone at [239-694-0089](tel:239-694-0089).
- **Where can I find more detailed instructions?**
 - You can view the detailed instructions on the manufacturer's website or refer to the provided manual at:
<https://mcscontrols.com/Documents/MCS/Manuals/MCS-Touchscreen%20and%20Graphics%20Manual.pdf>

INSTALLING GRAPHICS ON A RESISTIVE TOUCHSCREEN

INSERT A MEMORY STICK IN THE BACK OF THE TOUCHSCREEN

1. Screen will appear, highlight 'Open in File Manger' and click OK.
2. Make a backup of your Graphics file before proceeding with the new graphic install
3. Highlight your 'Graphics Folder' on left, click to open, than highlight the actual graphics folder on the right.
4. Click on 'EDIT' at top and click 'COPY'
5. HIGHLIGHT THE 'USB' MEMORY STICK on the left side under places
6. Click on 'EDIT' and click 'PASTE'
7. CHECK TO MAKE SURE YOU HAVE A BACKUP ON YOUR USB MEMORY STICK
8. Remove that USB memory stick
9. INSERT NEW USB memory stick with new graphics package

Unlocking the Touchscreen.

1. Click on the 'MCS TOOLS' folder on the desktop
2. Click on 'MEMORY LOCK'
3. Click on 'Unlock_Memory'
4. Click on 'Execute'
5. Touchscreen will re-boot
6. When Touchscreen re-boots- NOTE ON TOP RIGHT THAT SCREEN IS 'UNLOCKED'

Delete old Graphics Folder

1. On desktop, click on 'MCS TOOLS'
2. Under places, locate your 'GRAPHICS FOLDER', CLICK TO OPEN
3. Locate the folder for your touchscreen graphics and highlight
4. Click on 'EDIT' move to trash
5. DO NOT DELETE 'ERROR.JPG, GRAPHICeRROR.XML files

Install 'New Graphics Folder'

1. Before saving the graphics to the USB MEMORY STICK BE SURE TO EXTRACT THEM FROM THE WINZIP FOLDER
2. Click on the USB memory stick
3. Highlight new 'Graphics folder' on the memory stick
4. Click on 'EDIT' at top
5. Click on 'COPY'
6. Highlight 'GRAPHICS' under places
7. Click on 'EDIT' at top
8. Click on 'PASTE'
9. Verify that the new Graphics file has been copied to your touchscreen Graphics folder

Re-lock Touchscreen

1. Click the 'HOME' (House Icon) tab at top of the screen to the left of your file path.
2. Click on the 'MEMORY LOCK' folder
3. Click on 'Lock_Memory'.
4. Click on 'EXECUTE'
5. When the touchscreen reboots, verify the touchscreen is 'LOCKED' AT TOP RIGHT OF SCREEN

ON MCS-CONNECT SCREEN

1. Click on 'OFFLINE' at top.
2. Load an Offline XML file and enable Auto Screen Refresh.
3. Click to open your graphics folder in the graphics folder under 'Places'.
4. The files located in the 'Graphics folder' was labeled for your chiller in the root directory.
5. Navigate to the subdirectory which will show the files in the root directory, then click on 'systemoverview.xml'.
6. When MCS-CONNECT opens, click on the 'systemoverview.xml' tab, in the 'Site Info at top'.
7. Once you verified the graphics have been loaded, close MCS-CONNECT and re-connect to the controller and click on the graphics tab at the top right.

CONTACT SUPPORT FOR ADDITIONAL INFORMATION OR VIEW THE FOLLOWING MANUAL ON OUR WEBSITE:

<https://mcscontrols.com/Documents/MCS/Manuals/MCS-Touchscreen%20and%20Graphics%20Manual.pdf>

- Email: support@mcscontrols.com
- Phone: [239-694-0089](tel:239-694-0089)

QUICK INSTALL ON MCS-TOUCH-15.4 CAPACITIVE TOUCHSCREEN

You will need to unzip the Rev X Graphics folder supplied. Copy the "xxxxxx" folder that is inside the unzipped folder and paste it onto a flash drive. Click on the MCS-TOOLS on the main screen of the MCS-TOUCH-15.4. Select the "GRAPHICS" folder on the left side. Press and hold, then release the stylus on the "xxxxx" folder, then select move to trash if you have not already deleted the folder currently on there.

1. Insert the flash drive into the back of the touchscreen.
2. MCS USB Tool will pop up, select open in file explorer.
3. Hold and release the stylus on the “xxxxx” folder and select copy.
4. Select the “GRAPHICS” folder on the left side to open it.
5. Once inside, hold and release the stylus on any blank area on the right, and select paste.

VIEW THE FOLLOWING DETAILED INSTRUCTIONS ON THE FOLLOWING PAGES

FOR MORE INFORMATION SEE WEBSITE

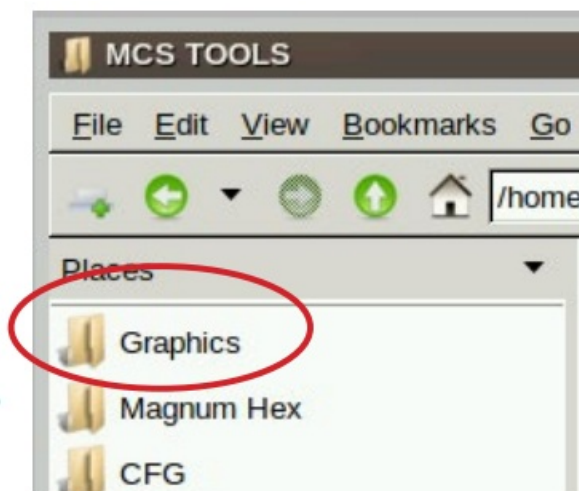
<https://mcscontrols.com/Documents/MCS/Manuals/MCS-Touchscreen%20and%20Graphics%20Manual.pdf>

REPLACING GRAPHICS FOR CAPACITIVE TOUCH

1. Click on the ‘MCS TOOLS’ folder on the desktop.



2. When MCS TOOLS opens, Double click on the ‘GRAPHICS’ on the left in the bookmarks.

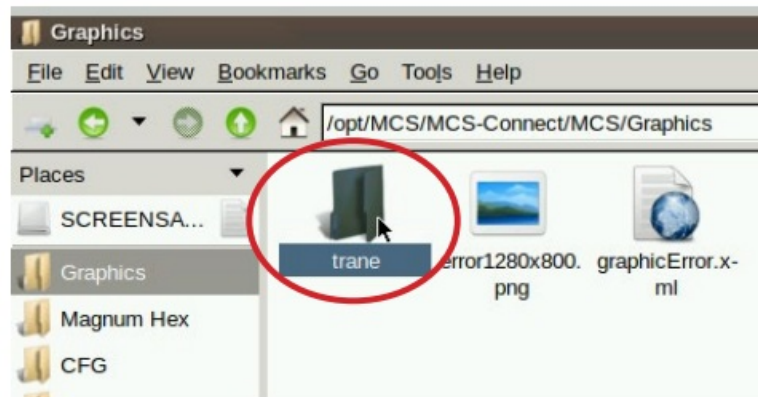


DELETE THE SUBFOLDER FOR YOUR GRAPHICS

IF YOU HAVE NOT MADE A BACKUP OF THE FILES IN GRAPHICS FOLDER – STOP BACKUP NOW TO A FORMATTED USB STICK AND SAVE THESE BEFORE PROCEEDING

TO THE NEXT STEP.

1. Delete the existing Graphic file in the graphics folder
2. In this case the example shows 'TRANE' for the graphics subfolder.
3. DELETE THIS SUBFOLDER ONLY, CLICK WITH STYLES PEN, HOLD AND A DROPDOWN MENU APPEARS, 'DRAG TO MOVETO TRASH'

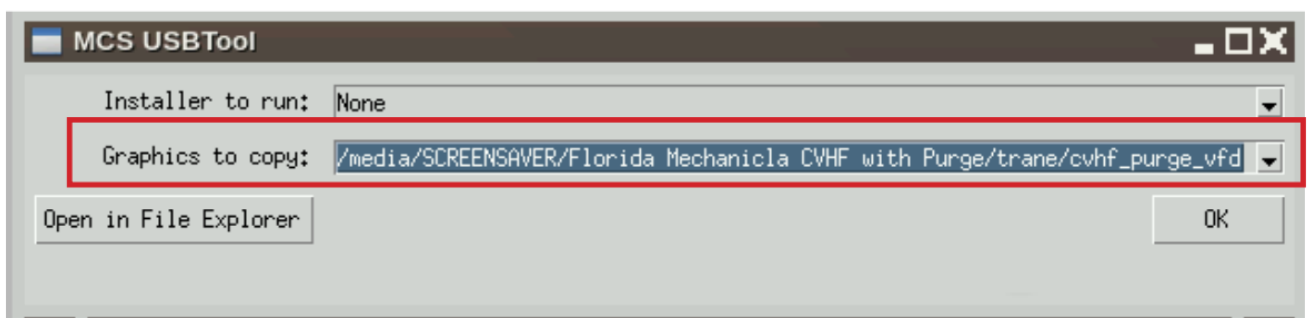


NEXT STEP FOR INSTALLING THE NEW GRAPHICS FOLDER

1. Download the emailed file from OEM or MCS to your computer desktop.
2. Click on a file to unzip (DO NOT COPY UNZIPPED FILE).
3. Click on the folder that contains your graphic file.
4. Copy the new graphics file to a formatted USB Stick.
5. Plug the USB Stick with the new graphics file into the back of the touchscreen.

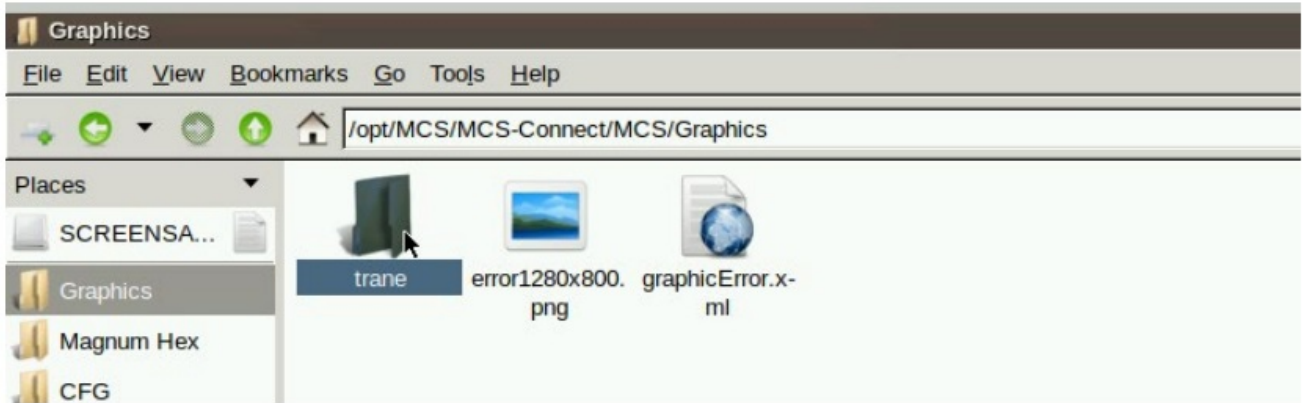


6. USB disk opens, click on small arrow for 'Graphics to copy', click okay.
7. File that will be copied to the 'Graphics folder in the bookmarks.

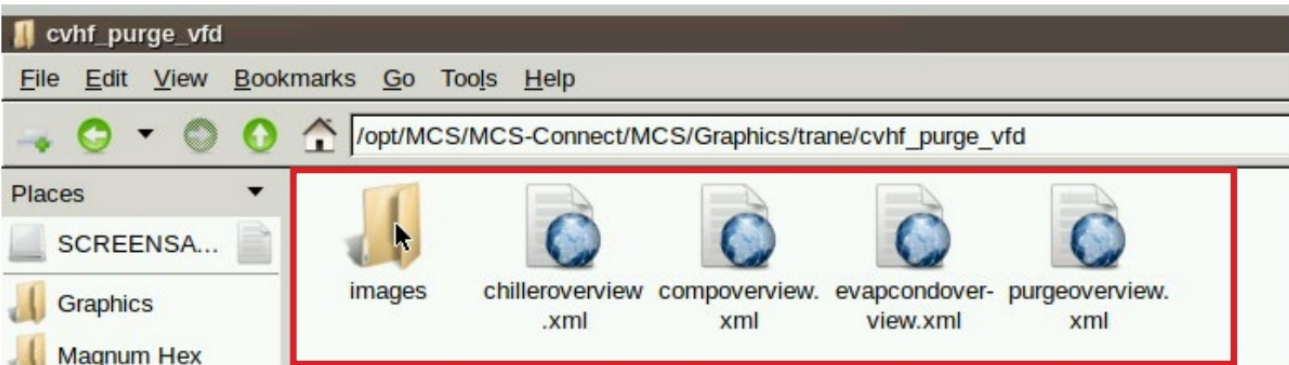


8. On Bookmarks Places, click on Graphics, Your new graphic files will be in the subfolder of the Graphics folder.

Example shows file that was placed in this folder 'TRANE'.



- 9. (Generic names can be used for different chillers (Trane, Carrier, etc.)
- 10. Double click on the subfolder “Trane” to see files needed for the replaced graphics.




TESTING THE GRAPHICS

ON MCS-CONNECT SCREEN

- 1. Click on 'OFFLINE' at top
- 2. Load your chilleroverview.xml file, Enable Auto Screen Refresh
- 3. Click to open your graphics folder in the graphics folder under places
- 4. Highlight 'chilleroverview.xml', and click open
- 5. When MCS-CONNECT opens, click on the 'chiller overview.xl tab to open your graphics
- 6. Once you verified the graphics have been loaded, close MCS-CONNECT and re-connect to the controller and click on the graphics tab at the top right.

Documents / Resources

	MICRO CONTROL SYSTEMS APP135 Graphics Touch Screen [pdf] Instructions APP135 Graphics Touch Screen, APP135, Graphics Touch Screen, Touch Screen
---	--

References

- [User Manual](#)

[Manuals+](#), [Privacy Policy](#)

This website is an independent publication and is neither affiliated with nor endorsed by any of the trademark owners. The "Bluetooth®" word mark and logos are registered trademarks owned by Bluetooth SIG, Inc. The "Wi-Fi®" word mark and logos are registered trademarks owned by the Wi-Fi Alliance. Any use of these marks on this website does not imply any affiliation with or endorsement.