




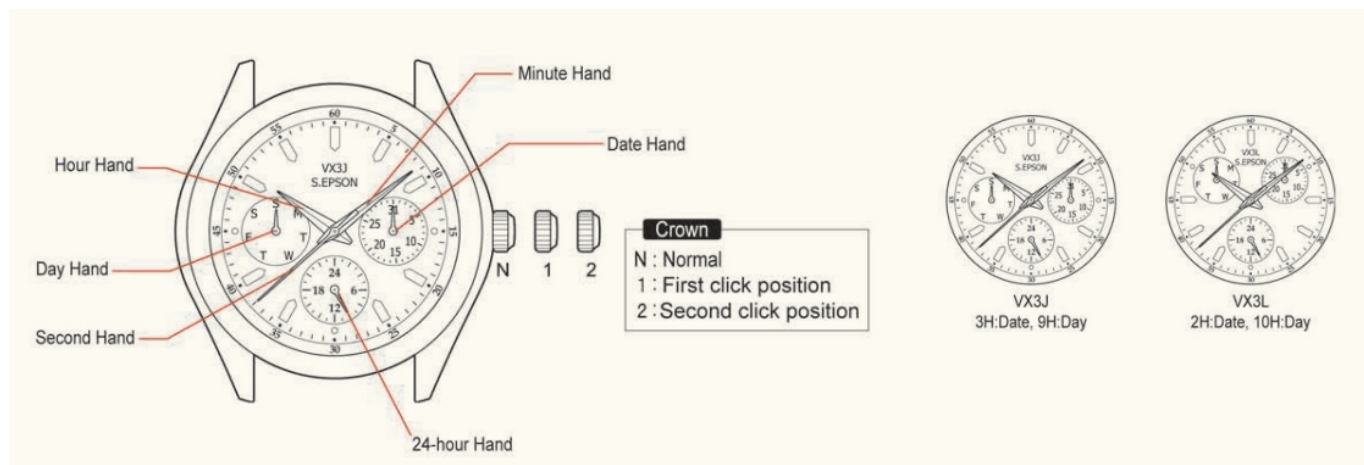
MICHAEL HILL 18541977 Multi Function Watch User Manual

[Home](#) » [MICHAEL HILL](#) » MICHAEL HILL 18541977 Multi Function Watch User Manual 

MICHAEL HILL 18541977 Multi Function Watch



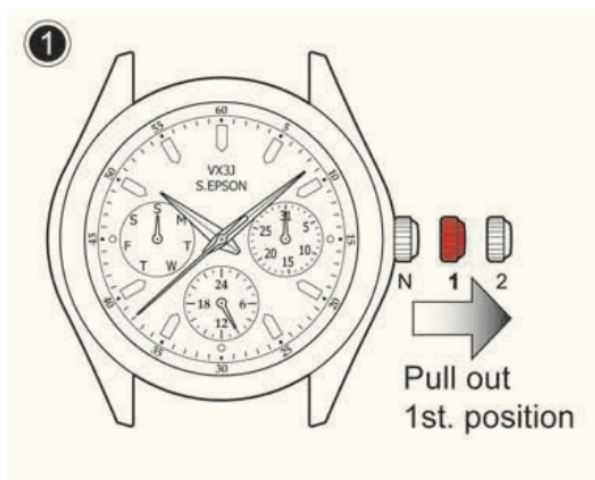
A. DISPLAY AND BUTTONS



*Dial positions and layout of the face might vary depending on the watch model.

B. SETTING THE DATE

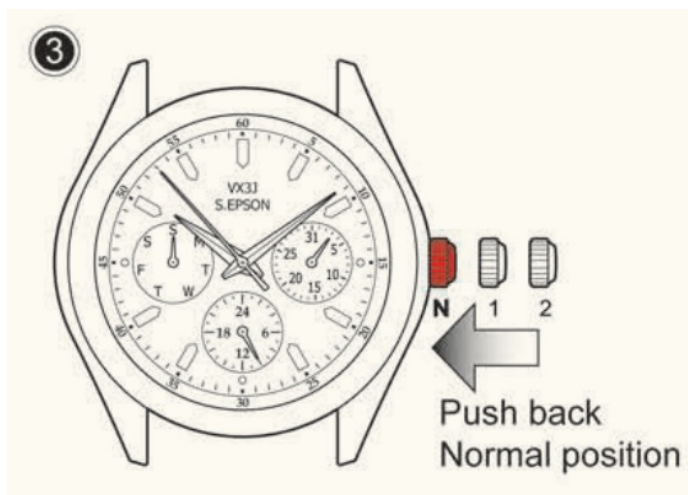
1. Pull the crown out to the 1st click position.



2. Turn the crown to set date hand.



3. Push the crown back to the normal position.




Do not set the date hand between 9:00pm and 1:00am. Otherwise, it may not turn properly. While setting the date hand, check that it moves properly in one-day increments. It is necessary to adjust the date on the first day after a 30-day month and February.

C. WARNING



WARNING

	THIS PRODUCT CONTAINS A BUTTON BATTERY
---	---

If swallowed or placed inside any part of the body, the battery can cause serious injuries. It can cause severe or fatal injuries within two hours or less. Button batteries are hazardous. Keep batteries out of reach of children. If you think the battery may have been swallowed or placed inside any part of the body, you should contact your local Poisons Information Centre immediately for 24/7 fast, expert advice

AUSTRALIA

Australian Poisons Information Centre
13 11 26

NEW ZEALAND

New Zealand Poisons Information Centre
0800 764 766

CANADA

Canada Poisons Information Centre
1 844 764 7669


Dispose of used button batteries immediately



Contents

- [1 Documents / Resources](#)
- [1.1 References](#)
- [2 Related Posts](#)

Documents / Resources

	<p>MICHAEL HILL 18541977 Multi Function Watch [pdf] User Manual 18541977 Multi Function Watch, 18541977, Multi Function Watch, Watch</p>
---	--

References

- [User Manual](#)

[Manuals+.](#) [Privacy Policy](#)

This website is an independent publication and is neither affiliated with nor endorsed by any of the trademark owners. The "Bluetooth®" word mark and logos are registered trademarks owned by Bluetooth SIG, Inc. The "Wi-Fi®" word mark and logos are registered trademarks owned by the Wi-Fi Alliance. Any use of these marks on this website does not imply any affiliation with or endorsement.