



MiBOXER MZ-RGB-REMOTE 4-Zone RGBW Remote Control User Manual

[Home](#) » [MiBOXER](#) » MiBOXER MZ-RGB-REMOTE 4-Zone RGBW Remote Control User Manual 

Contents

- [1 MiBOXER MZ-RGB-REMOTE 4-Zone RGBW Remote Control](#)
- [2 Features](#)
- [3 Products Key Diagram](#)
- [4 Linking Code / Unlinking Code Instructions](#)
- [5 Grouping of several lights](#)
- [6 Attention](#)
- [7 Documents / Resources](#)
- [8 Related Posts](#)

MiBOXER

MiBOXER MZ-RGB-REMOTE 4-Zone RGBW Remote Control

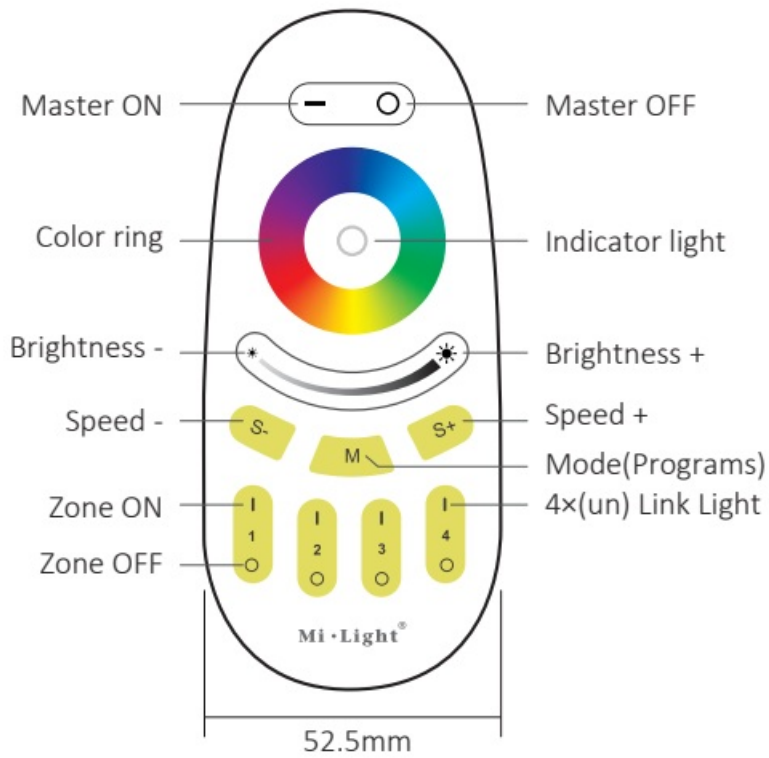


Features

This manual describes two types of remote controls used for our RGBW product. Both of them have same functions but different design. Product adopts worldwide used 2.4GHz frequency, GFSK control method, with the features of low power consumption, long-distance transmuting, strong an-interference and fast communication rate. Adopt high-precision touching IC Touching is more stable and sensitive, can control specified Mi-Light / MiBoxer smart light with color, color temperature, saturation and brightness changing.

Products Key Diagram

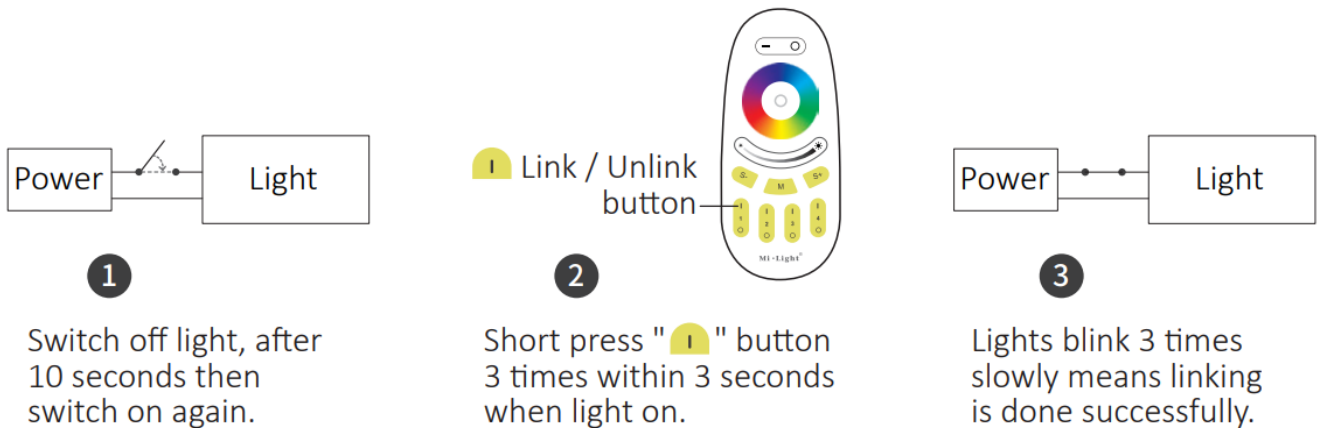
Remark: Hold “ ” to get white mode. Under white mode, press “S-” to get warm white, press “S+” to get cool white. Under color mode, press “S+/S-” for saturation control. When pressing “M”, S+/S- can adjust the speed of the dynamic modes. To dim all RGBW lights at once or change the color, frist press “Master ON”. to do this with individual lights, first press “Zone ON”. secondly, choose the color or brightness according to the color ring or brightness ring.



Linking Code / Unlinking Code Instructions

Remark: The light can be working after linking with the remote.

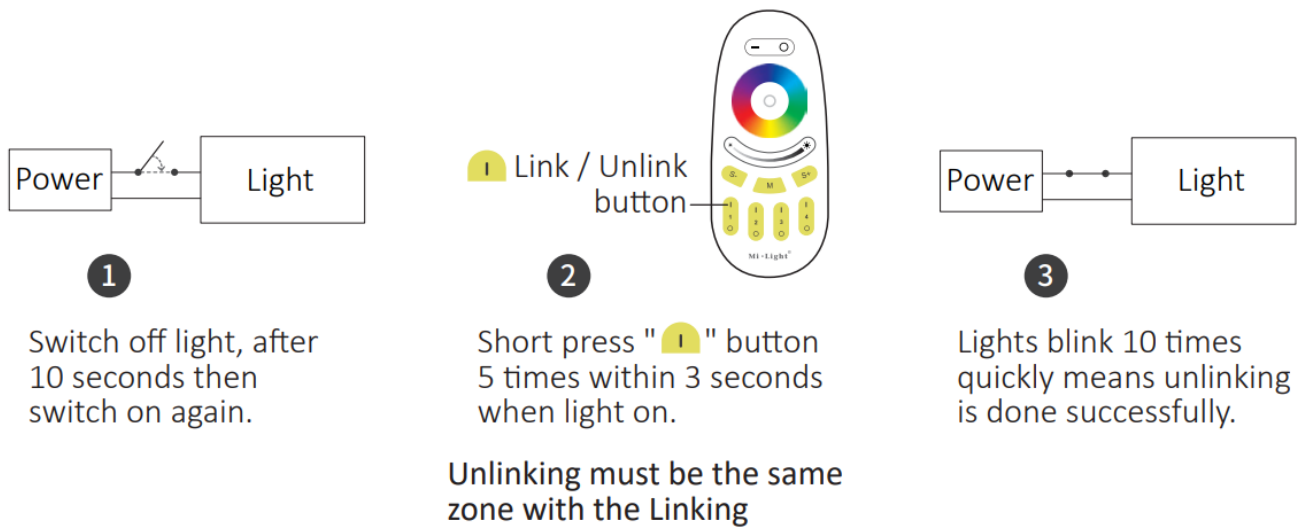
Linking Code Instructions



Note:

Linking failed if light is not blinking slowly, Please follow above steps again. (Note: Light that have linked can't link again)

Unlinking Code Instructions

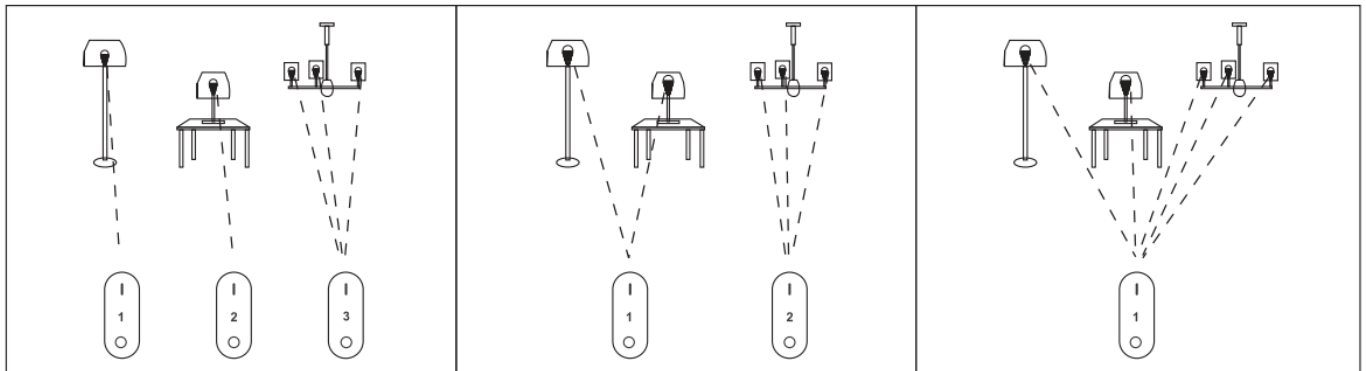


Note:

Unlinking failed if light is not blinking quickly, Please follow above steps again. (Note: Light haven't linked that don't need to unlink)

Grouping of several lights

You can add endless numbers of lights to a zone on the 4-channel remote by linking the lights to different zones. This way you are completely flexible in creating different group combinations. Below you can see some grouping examples.





Remark:

1. The user can re-program freely as needed. One remote can control countless lamps or controllers, but one lamp or controller can only be controlled by four remotes (Max).
2. Please check the battery installation and controller (totally discharge the power), when you program after switching off and switching on.

Attention

Using the light/controller in the place with metal or concrete structures or electromagnetic interference will cause issues with communication and communication range.

Documents / Resources

 	MiBOXER MZ-RGB-REMOTE 4-Zone RGBW Remote Control [pdf] User Manual MZ-RGB-REMOTE, 4-Zone RGBW Remote Control, MZ-RGB-REMOTE 4-Zone RGBW Remote Control
--	---