



## Contents [\[ hide \]](#)

- [1 MIBOXER MLR2 Mini Single Color LED Controller](#)
- [2 Features](#)
- [3 Parameters](#)
- [4 Diagram](#)
- [5 Remote Control Instructions](#)
- [6 FAQ](#)
- [7 Documents / Resources](#)
  - [7.1 References](#)
- [8 Related Posts](#)

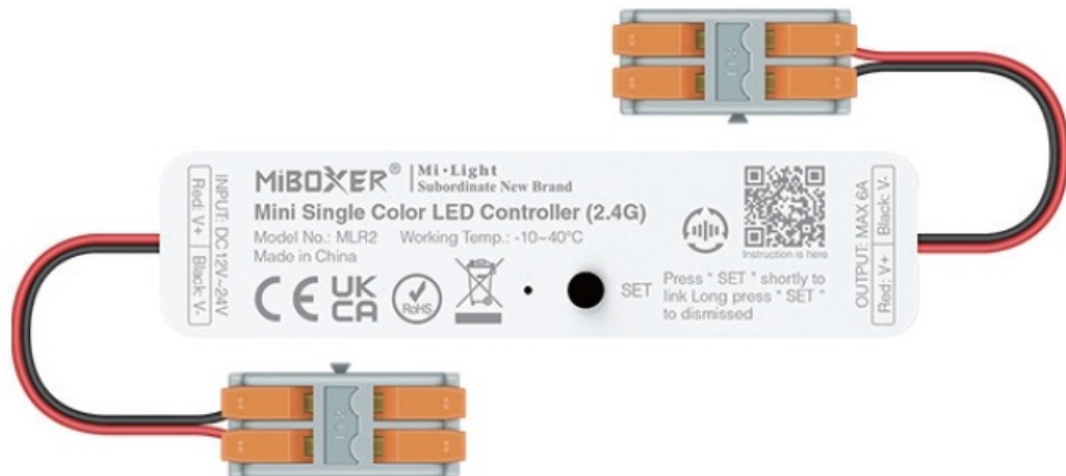


## MIBOXER MLR2 Mini Single Color LED Controller



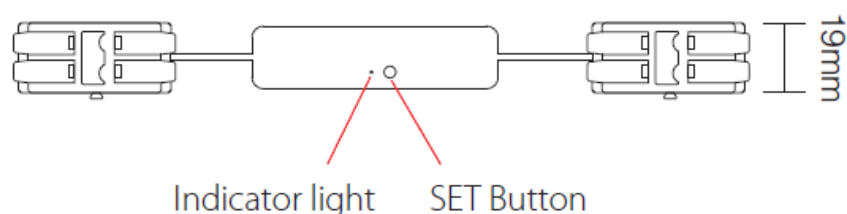
## Features

- 4096 levels smooth dimming, Min brightness 0.1%, dimming range 0.1%-100%
- One controller can be paired with 12 remote (Control distance 30m)
- **Auto-forwarding:** Automatically forward the remote control signal to another master box, making the remote control distance infinite
- Support do not disturb mode setting, Suitable for areas with frequent power outages to save electricity
- Supports “Tuya Smart” app control (2.4GHz gateway is needed)
- Support Alexa, Google Assistant, Yandex Alice (2.4GHz gateway is needed)



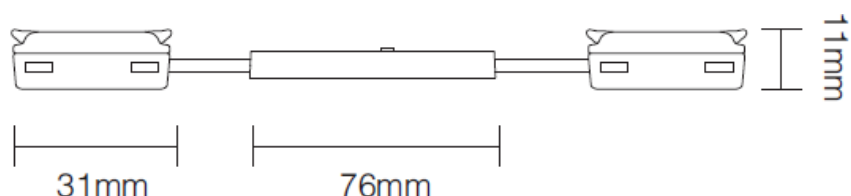
## Parameters

- **Name:** Mini Single Color LED Controller (2.4GHz)
- **Model No.:** MLR2
- **Input Voltage:** DC12-24V
- **Output Current:** Max 6A
- **Output Power:** 72-144W
- **Output Type:** Constant Voltage
- **Control Signal:** 2.4GHz RF
- **Control Distance:** 30m
- **IP Rate** IP20
- **Working Temp.:** -10~40°C



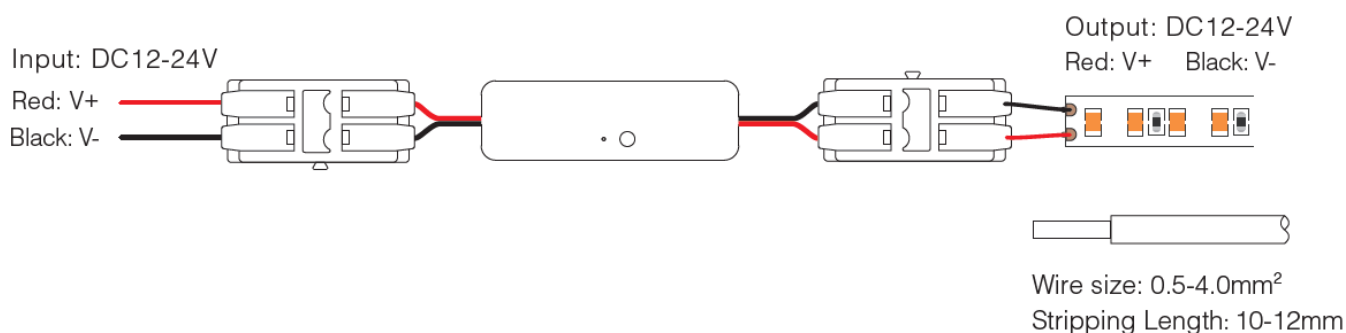
- **Dimming level:** 4096 levels

- **Dimming Range:** 0.1%-100%
- **Dimming Curve:** Logarithmic
- **EMC Standard (EMC):** ETSI EN 301 489-1 V2.2.3 , ETSI EN 301 489-3 V2.1.1
- **Safety Standard (LVD) :** EN 61347-1 2015+A1: 2021, EN 61347-2-11: 2001+A1:2019
- **Radio Equipment (RED):** ETSI EN 300 440 V2.2.1
- **Certification:** CE, EMC, LVD, RED
- **Warranty:** 5 Years

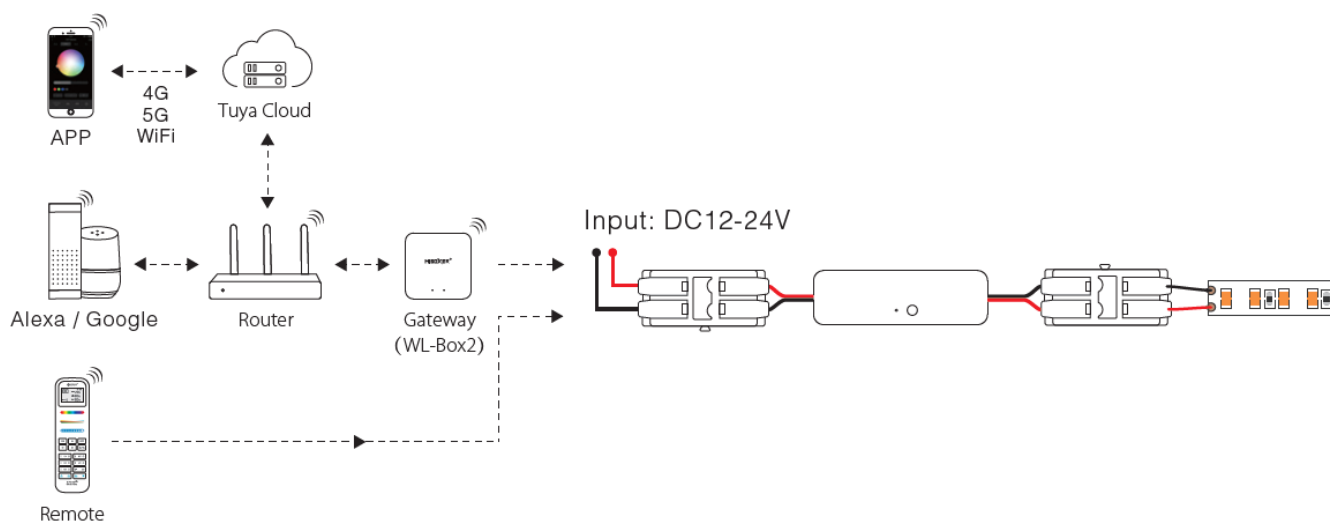


## Diagram

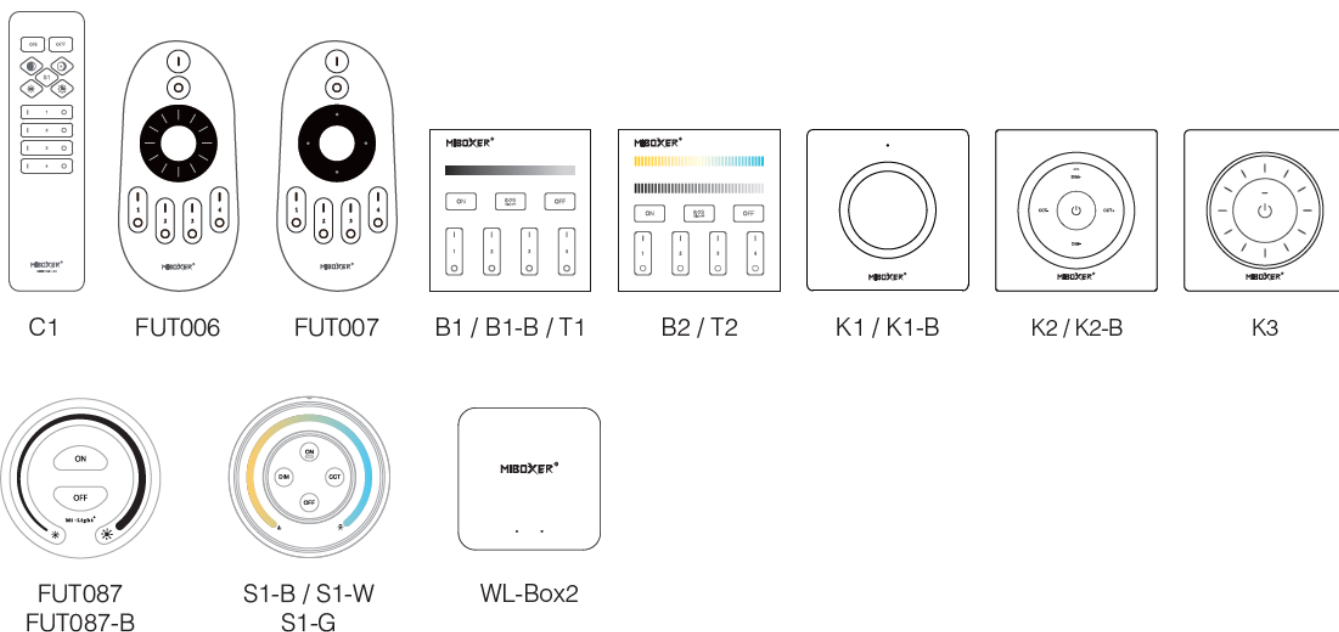
### Connection Diagram



### Application Diagram



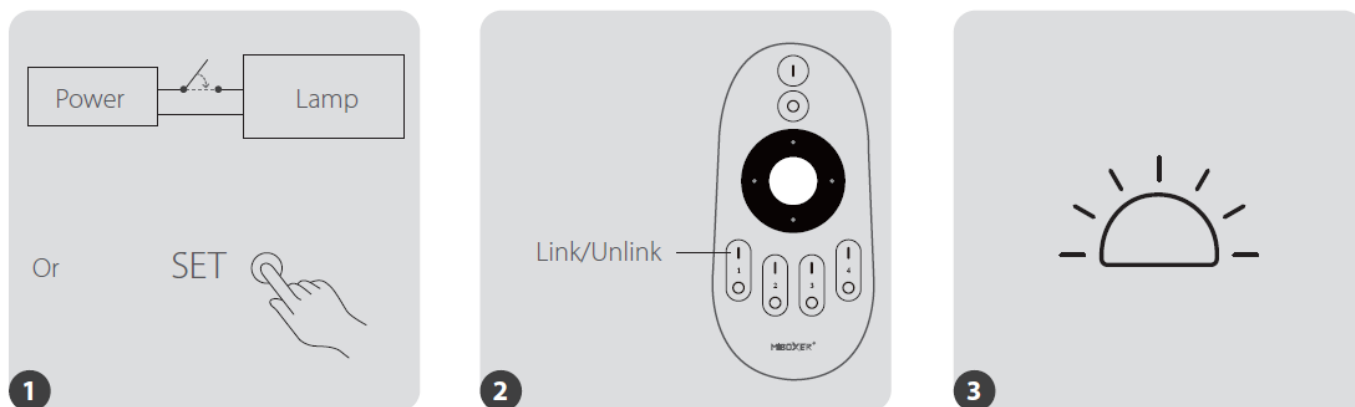
**Compatible with remote control (need to be purchased separately)**



## Remote Control Instructions

### Linking Code Instructions

1. Power off, then power on again after 10 seconds or the “SET” button once or turn on the light through the PUSH switch.
2. Short press the “I” button 3 times within 3 seconds.
3. The light flashes slowly 3 times, indicating successful Linking.

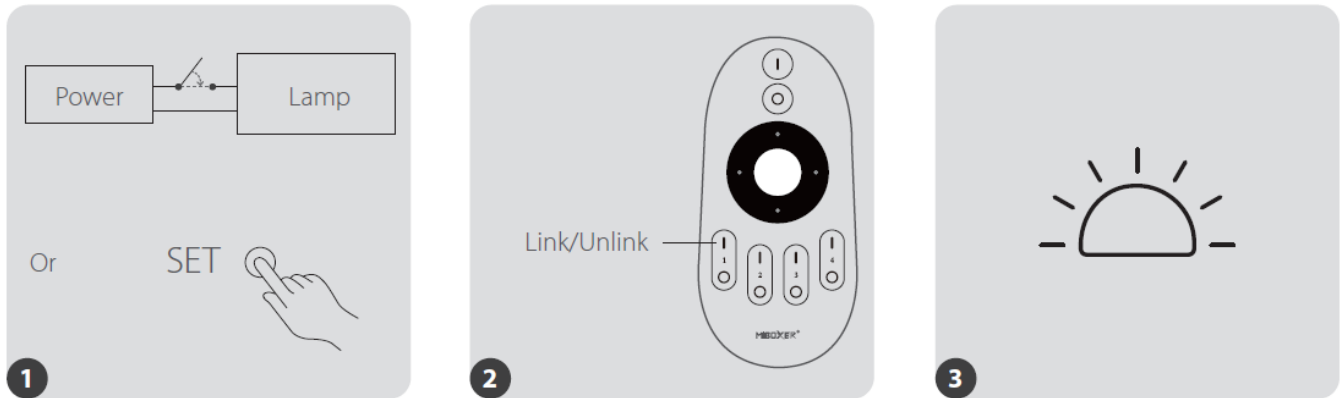


If the light does not flash slowly, the code binding failed, please perform the above steps again. (Note: Already coded lamps cannot be coded again).

### Unlinking Code Instructions

#### Method 1:

1. Power off, then power on again after 10 seconds or the “SET” button once or turn on the light through the PUSH switch.
2. Short press the “I” button 5 times within 3 seconds.
3. The lamp flashes 10 times quickly, indicating successful unlinking



If the light does not flash quickly, unlinking failed, please perform the above steps again.  
(Note: For lamps that are not coded, no unlinking is required).

### Method 2:

Press and hold the “SET” button for 5 seconds, the light flashes 10 times, and the code is cleared successfully.

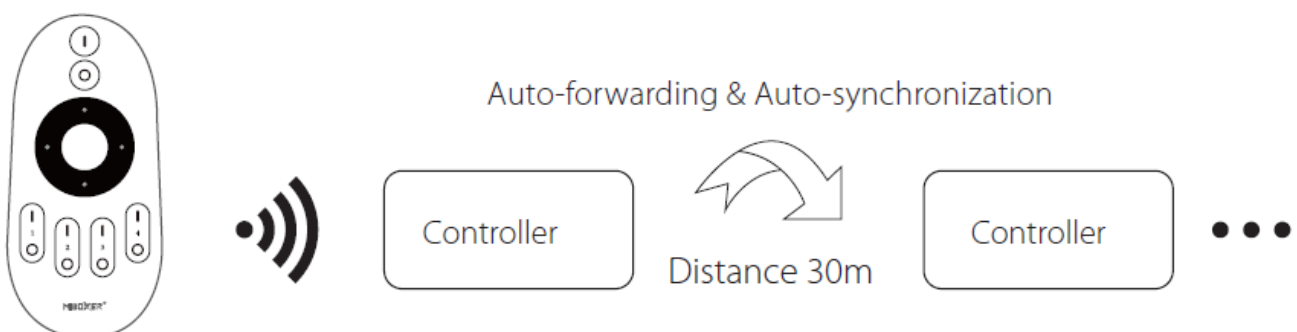
### Auto-forwarding & Auto-synchronization

- **Remote control signal auto-forwarding**

The remote control signal received by the host will be forwarded to another host within 30m, making the control distance infinite.

- **Dynamic mode auto-synchronization**

In the same dynamic mode, the lamps will be automatically synchronized so that the dynamic effects are always consistent.



## Turn Do Not Disturb mode on and off (ON by default)

Turn on “Do Not Disturb” (applicable to areas with frequent power outages to save energy)

- **Turn on Do Not Disturb mode:**

Short press the “OFF” button 3 times within 3 seconds, and then short press the “ON” button 3 times. The light flashes 4 times to indicate success.

**Note:** When the lamp is powered on again after a power outage, its status (lights on or off ) will remain the same as before the power outage.

- **Turn off Do Not Disturb mode:**

Short press the “ON” button 3 times within 3 seconds, and then short press the “OFF” button 3 times. The light flashes 4 times slowly to indicate successful shutdown.

**Note:** When the lamp is powered on again after a power outage, its status will be on by default.

## Notice

1. When installing the device, please turn off the power to ensure safety.
2. Please check if the input voltage is consistent with the device.
3. Non-professional users cannot disassemble the device directly, otherwise the device may be damaged.
4. Do not use the device near large metal areas or areas with strong electromagnetic waves, otherwise the remote control distance will be seriously affected.

## FAQ

- **Q: Can I use multiple controllers in the same setup?**

- A: Yes, you can pair multiple controllers with remotes within the same system, allowing for versatile control of your LED lighting.

- **Q: How do I clear the pairing code for a specific lamp?**


- A: To unlink a lamp from a controller, follow the unlinking code instructions provided in the user manual. This process will clear the code binding for that specific lamp.

- **Q: Is there a mobile app available for controlling the LED controller remotely?**

- A: Yes, the LED controller supports control via the Tuya Smart app, which

enables remote management of your lighting system when connected to a 2.4GHz gateway.

## Documents / Resources

	<a href="#">MIBOXER MLR2 Mini Single Color LED Controller [pdf]</a> Owner's Manual MLR2 Mini Single Color LED Controller, MLR2, Mini Single Color LED Controller, Single Color LED Controller, Color LED Controller, LED Controller
-----------------------------------------------------------------------------------	----------------------------------------------------------------------------------------------------------------------------------------------------------------------------------------------------------------------------------------

## References

- [User Manual](#)

## Related Posts



[MiBoxer FUT035W Single Color LED Controller Owner's Manual](#)

DIM - Z SINGLE COLOR LED CONTROLLER Control  
Single Color LED Strip PRODUCT PARAMETERS

PRODUCT NAME single Color...



[MiBOXER FUT041 Single Color LED Strip Controller User Guide](#)

MiBOXER FUT041 Single Color LED Strip Controller  
User Guide Features This controller adopt the widely

used 433MHz wireless...



[Banlanxin SP631E 1CH PWM Single Color LED Controller Instructions](#)

Banlanxin SP631E 1CH PWM Single Color LED  
Controller Instructions Brief Single-way PWM LED

controller, high-frequency delicate PWM dimming,...



## [MiBOXER FUT041 Upgraded 433MHz Single Color LED Strip Controller User Manual](#)

Mi • Light Subordinate New Brand Features This controller adopt the widely used 433MHz wireless

technology with the...

■ MiBOXER

◆ Color LED Controller, LED Controller, MiBOXER, Mini Single Color LED Controller, MLR2, MLR2 Mini Single Color LED Controller, Single Color LED Controller

—Previous Post

**[MiBOXER FUT089S 6-Zone RGB Plus CCT Remote User Manual](#)**

---

## Leave a comment

Your email address will not be published. Required fields are marked \*

Comment \*

Name

Email

Website

☐ Save my name, email, and website in this browser for the next time I comment.



**Post Comment**

[Manuals+](#), [Privacy Policy](#) | [@manuals.plus](#) | [YouTube](#)

This website is an independent publication and is neither affiliated with nor endorsed by any of the trademark owners. The "Bluetooth®" word mark and logos are registered trademarks owned by Bluetooth SIG, Inc. The "Wi-Fi®" word mark and logos are registered trademarks owned by the Wi-Fi Alliance. Any use of these marks on this website does not imply any affiliation with or endorsement.