



Mi Light SYS-PT2 1-Channel Amplifier Box Instruction Manual

[Home](#) » [Mi-Light](#) » Mi Light SYS-PT2 1-Channel Amplifier Box Instruction Manual 

Mi • Light[®]

1-Channel Amplifier Box
Model No.: SYS-PT2

Contents

- [1 Features](#)
- [2 Parameters](#)
- [3 Installation Instruction](#)
- [4 Wiring Diagram](#)
- [5 Attention](#)
- [6 Documents / Resources](#)
- [7 Related Posts](#)

Features

The amplifier is to amplify the power and signal for the “SYS-PT1 1-channel host control box”. It can amplify the signal from the “SYS-PT1 control box” to connect more LED lamps, and synchronously control more lamps. When you add one more amplifier, you can connect double LED lamps.

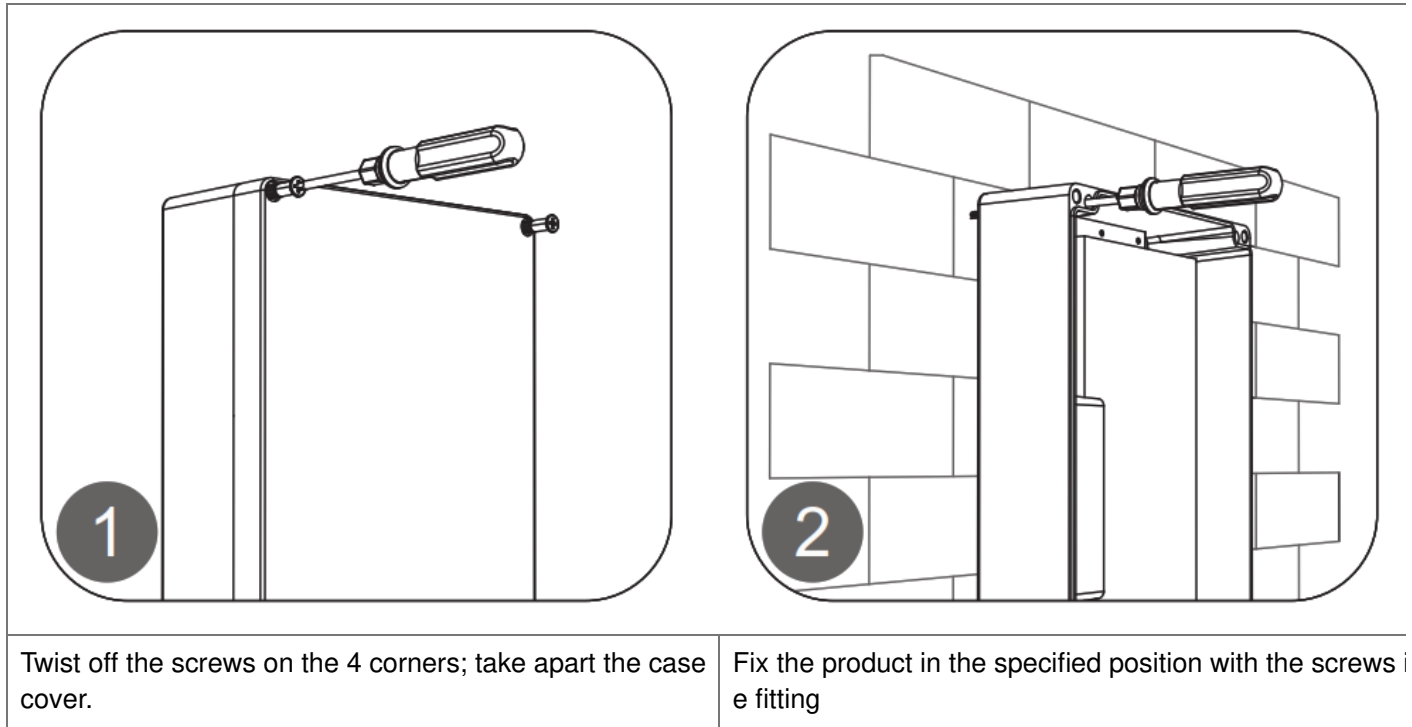
Parameters

Model No.: SYS-PT2
Input: AC 100~240V 50/60Hz
Output Voltage: DC24V
Output Current: Max 8.5A

Output Power: Max 200W
IP Rate: IP66
Product Weight: 3.02kg

Mi Light SYS PT2 1 Channel Amplifier Box

Installation Instruction



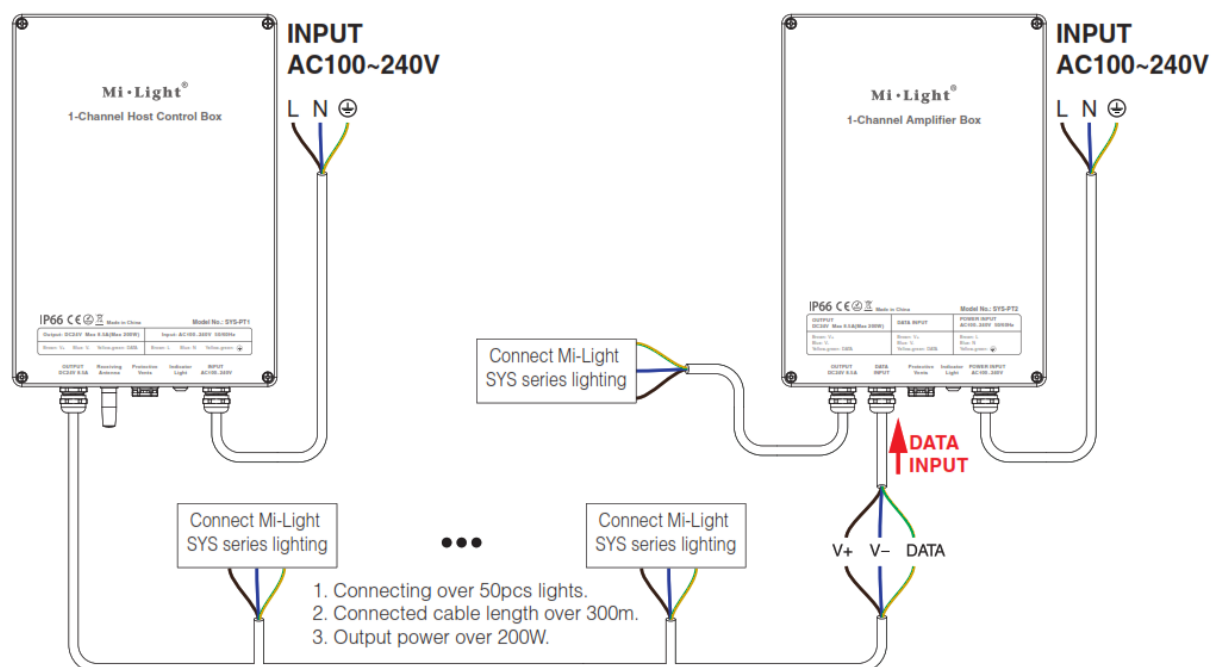
Mi Light SYS PT2 1 Channel Amplifier Box - Connect

Note: When using the “SYS-PT1 control box”, you need again to add the “SYS-PT2 1-channel amplifier box” for the below 3 situations.

1. Connecting over 50pcs lights.
2. Connected cable length over 300m.
3. Output power over 200W.

Wiring Diagram

SYS-PT1 1-Channel Host Control Box (Need to buy separately)



Note

1. All connected lights to the “SYS-PT1 control box” cannot be over 200W, otherwise, it will damage the control box.
2. The wiring method, please see details for the SYS series instructions.

Attention

1. Please check whether the input voltage is in accordance with the control box working voltage, and please check the connection of both the cathode and anode.
2. Non-professional users cannot dismantle the control box directly, Otherwise, the control box may be broken.

IP66 CE UK CA RoHS

Made in China

Documents / Resources

	<p>Mi Light SYS-PT2 1-Channel Amplifier Box [pdf] Instruction Manual SYS-PT2, 1-Channel Amplifier Box</p>
--	---