

MHS W688202303 2 Drawer End Table



# MHS W688202303 2 Drawer End Table Instruction Manual

[Home](#) » [MHS](#) » MHS W688202303 2 Drawer End Table Instruction Manual 

## Contents

- [1 MHS W688202303 2 Drawer End Table](#)
- [2 Product Usage Instructions](#)
- [3 Assembling](#)
- [4 Weight Limitation](#)
- [5 What's included](#)
- [6 The Hardwares](#)
- [7 The Accessories](#)
- [8 Documents / Resources](#)
  - [8.1 References](#)

# MHS®

**MHS W688202303 2 Drawer End Table**



## Specifications

- **Product Name:** 2 Drawer End Table
- **Version:** 1.0
- **Weight Limitation:** 55 lbs table top, lbs per shelf
- **Assembly:** Requires 2 persons

## Product Usage Instructions

### Assembling

Before starting assembly, ensure you have all the necessary parts and tools mentioned in the manual.

### Step 1: Preparing for Assembly

- Use the packaging carton as a working surface to prevent product damage.
- Ensure all parts are organized and easily accessible.

### Step 2: Assembling Drawer Components

- Follow the instructions provided for assembling the drawer components from the bottom up for easier access.

### **Step 3: Attaching Side Panels and Bottom Panel**

- Attach the side panels and bottom panel according to the provided instructions.

### **Step 4: Attaching Cabinet Top and Shelf**

- Secure the cabinet top and shelf in place following the assembly guidelines.

### **Step 5: Continuing with Hardware Installation**

- Proceed with attaching additional hardware components as per the manual instructions.

### **Step 6: Finalizing Assembly with Metal Plate and Bolts**

- Use the metal plates and bolts to complete the assembly process.

### **Step 7: Completing Drawer Installation**

- Finish installing drawers as per the provided steps.

### **Step 8: Final Touches with Plastic Corner Support**

- Add plastic corner supports to ensure the stability and safety of the end table.

### **Step 9: Final Checks and Adjustments**

- Review the assembled product, make any necessary adjustments, and ensure all parts are securely in place.

### **Step 10: Additional Instructions**

- Follow the provided warnings and avoid improper use of the end table to maintain its quality and longevity.

### **Frequently Asked Questions (FAQ)**

#### **Q: Can I use this end table for commercial purposes?**

- **A:** It is not recommended to use this end table for commercial purposes as it is designed for residential use.

#### **Q: What should I do if I exceed the weight limitation?**

- **A:** Avoid exceeding the weight limitation specified to prevent damage to the end table. Distribute weight evenly on the tabletop and shelves.

#### **Q: Can I use power tools for assembly?**

- **A:** It is advised to use hand tools for assembly to prevent over-tightening screws and bolts which may lead to stripping.

## Assembling

Estimated time for assembly

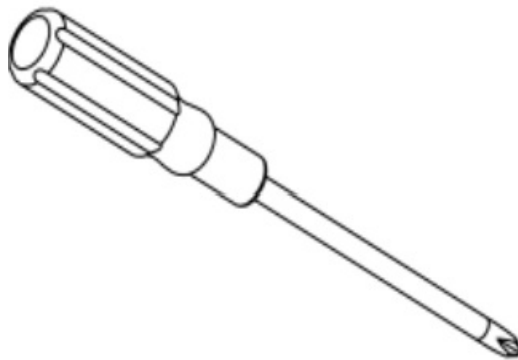


**25 : 00**

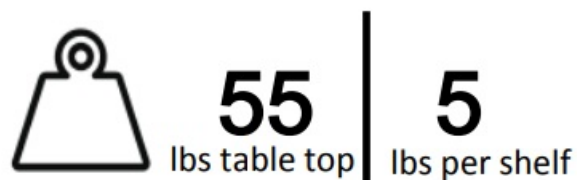
## What you need

- Use the packaging carton as a working surface to prevent product damage during assembly.

## Phillips head screwdriver



## Weight Limitation

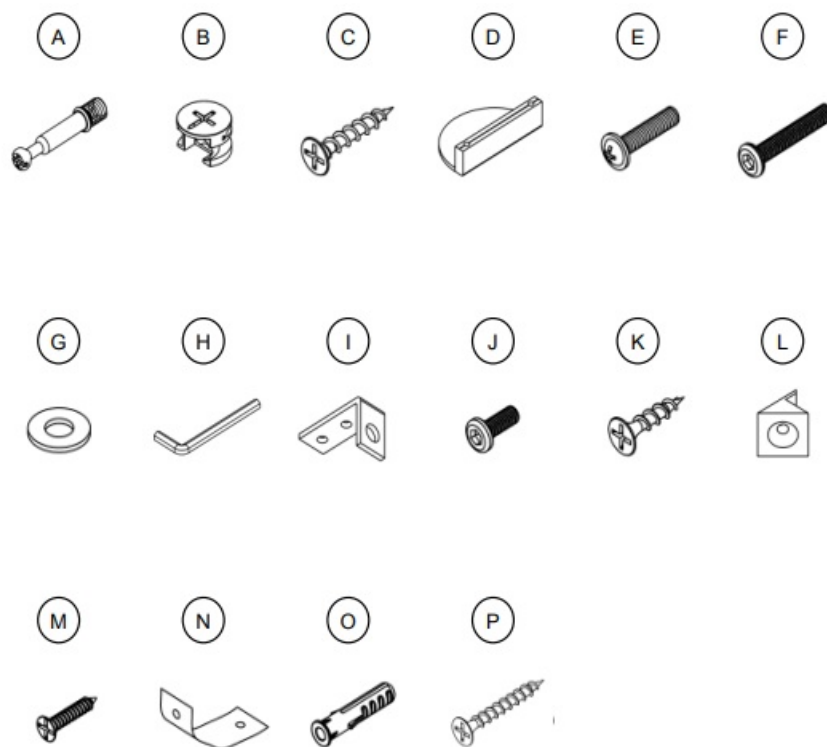


**2 PERSONS**

## What's included

Code	Description	Qty
A	Cam Bolt M5*27mm	8
B	Cam Lock 15*10mm	8
C	Screw Φ4x25mm	8
D	Handle	2
E	Bolt M4*18mm	4
F	Bolt M6x35mm	8
G	Metal Washer	8
H	Allen Key	1
I	Metal Plate	4
J	Bolt M6x15mm	4
K	Screw Φ4x16mm	10
L	Plastic corner support	4
M	Screw Φ2.5x16mm	4
N	Nylon strap	2
O	Anchor	2
P	Screw Φ4x35mm	2

## The Hardwares



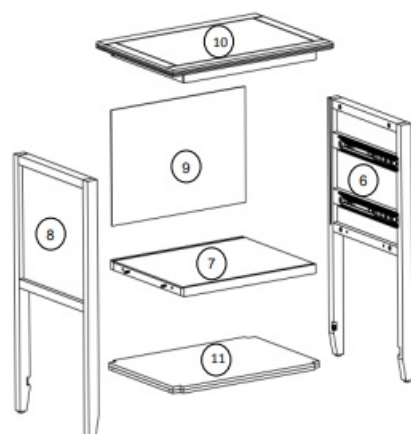
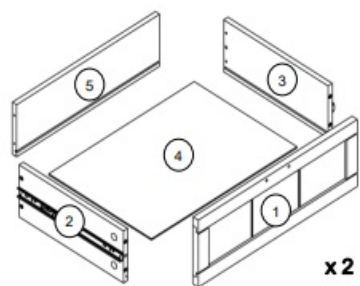
#### IMPORTANT:

1. Do not tighten bolts/screws completely until all bolts/screws are lined up and inserted into holes.
2. Do not over-tighten screws and bolts to avoid stripping.
3. Please use hand tools to assemble this product. Do not use power tools.
4. Must need 2 people to assemble this product.

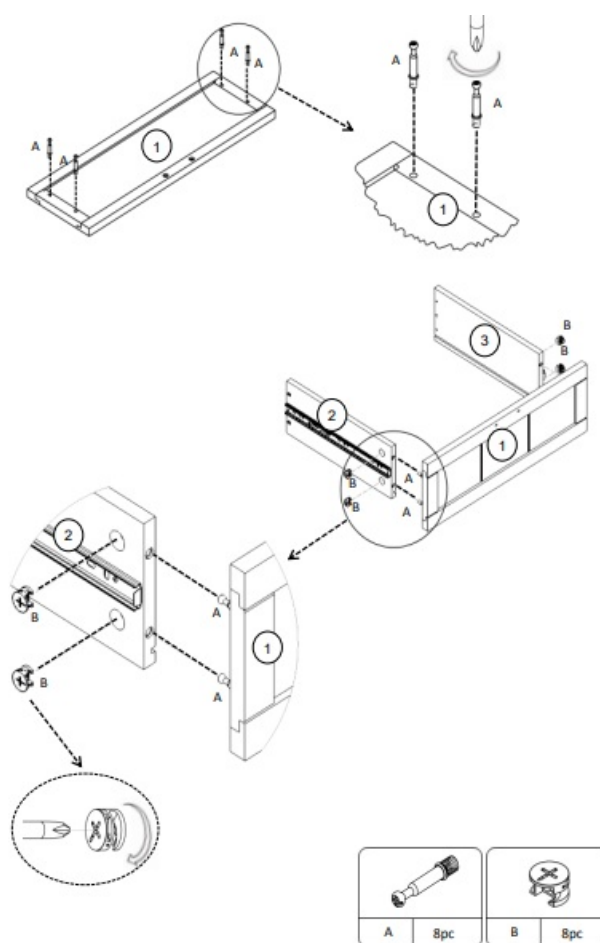
#### Included Accessories

Code	Description	Qty
1	Drawer Front Panel	2
2	Drawer Left Side Panel	2
3	Drawer Right Side Panel	2
4	Drawer Bottom Panel	2
5	Drawer Back Panel	2
6	Right Side Panel	1
7	Bottom Panel	1
8	Left Side Panel	1
9	Back Panel	1
10	Cabinet Top	1
11	Shelf	1

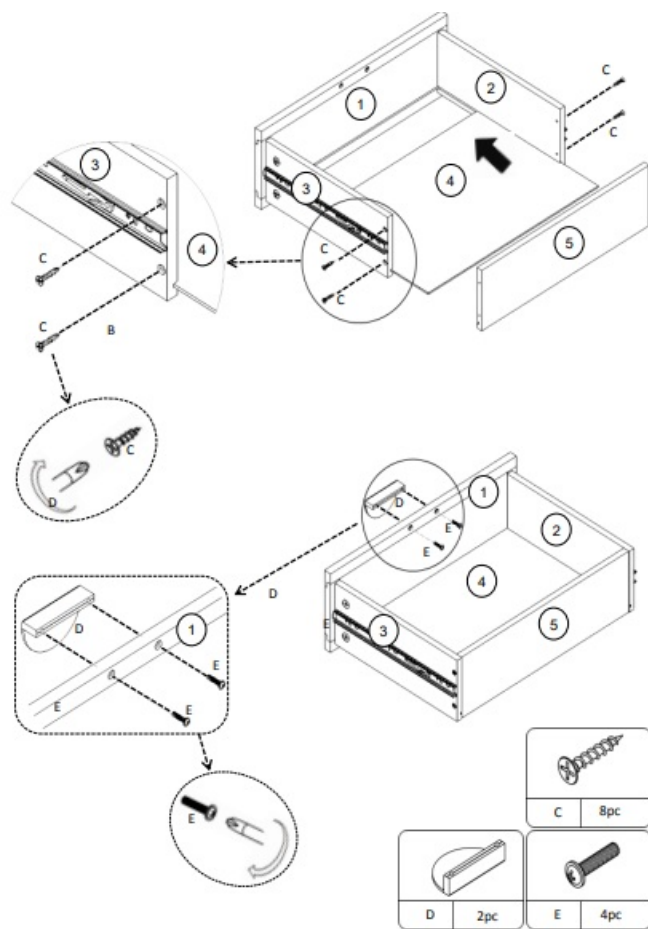
#### The Accessories



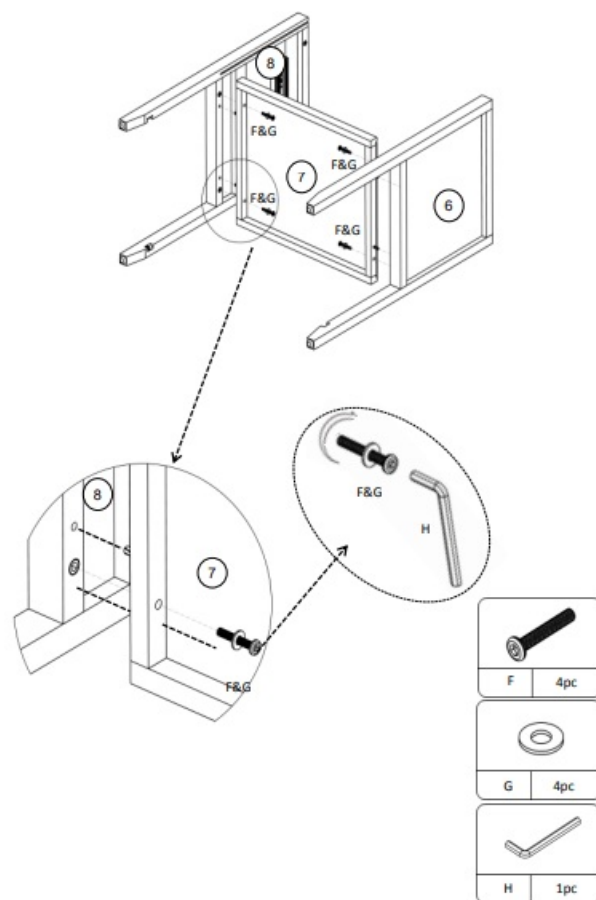
## Step 1



## Step 2

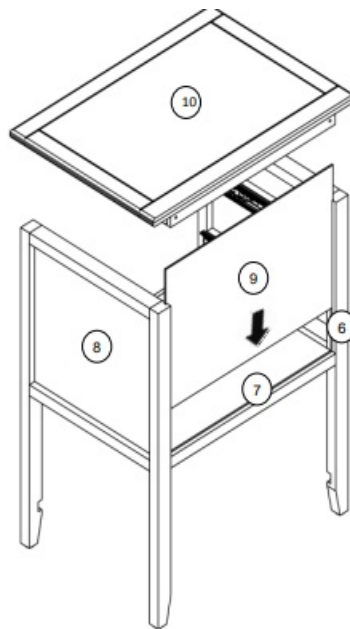


### Step 3

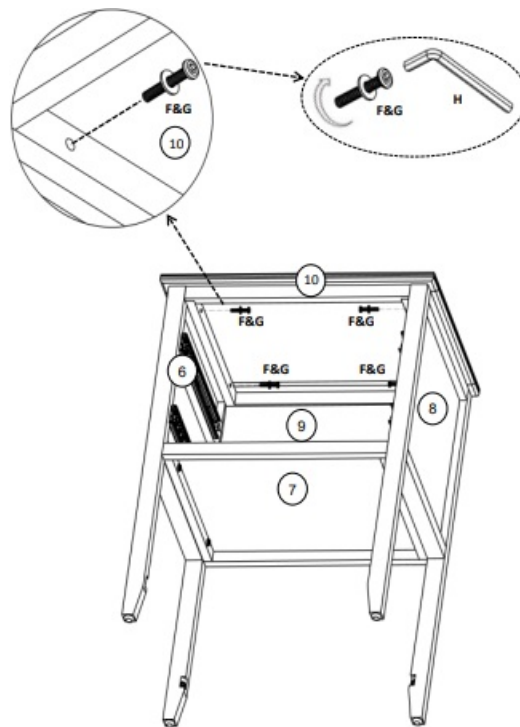





### Step 4



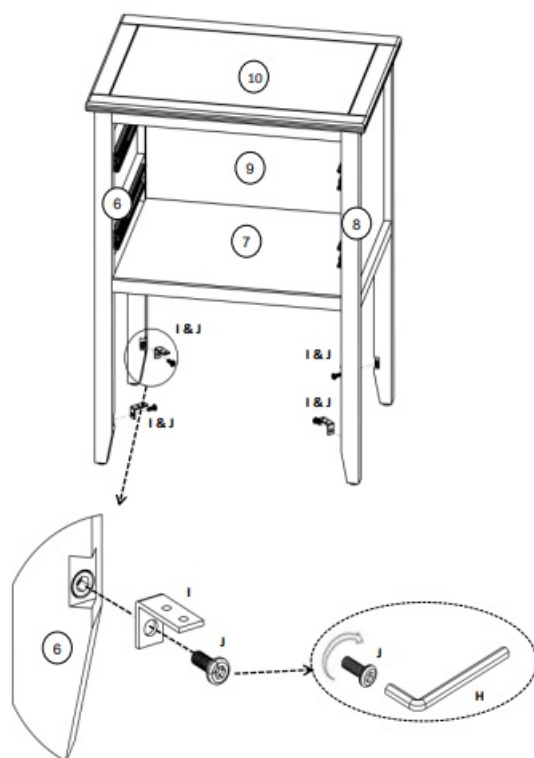


## Step 5



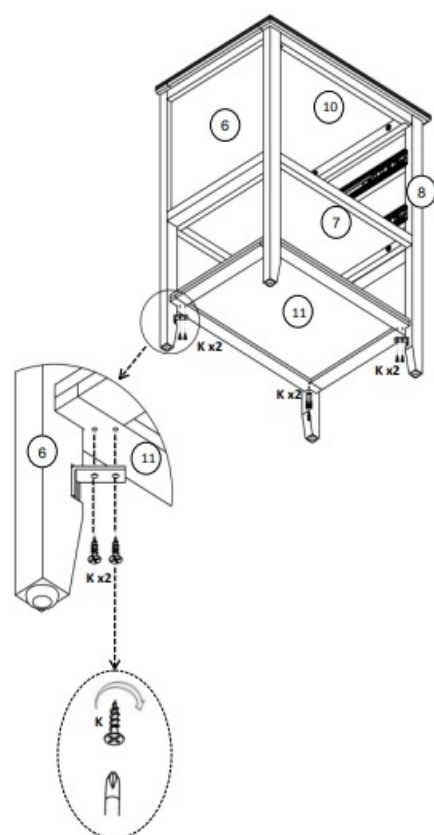
		
F	G	H
4pc	4pc	1pc

## Step 6



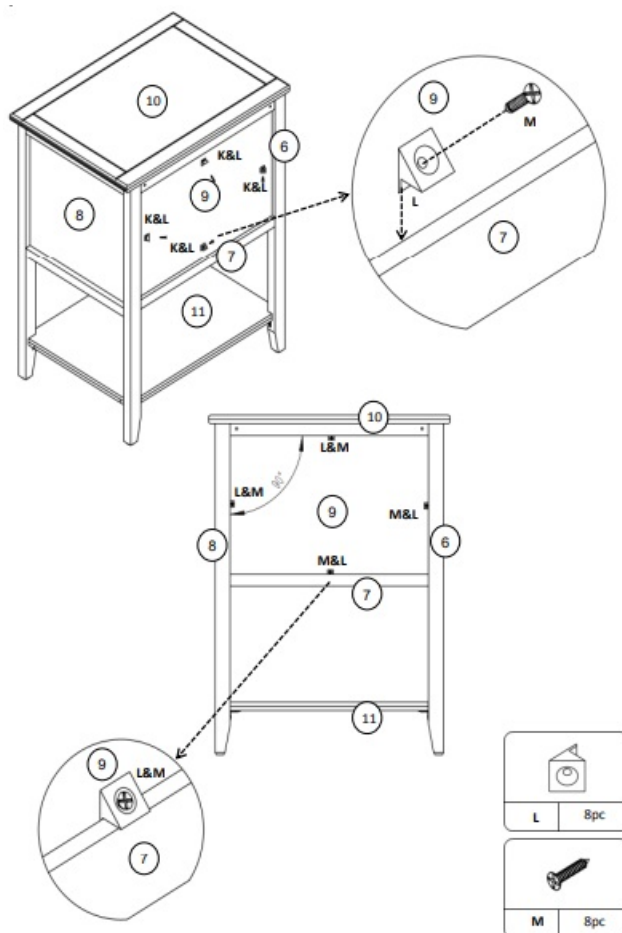
I	J	H
4pc	4pc	1pc

## Step 7

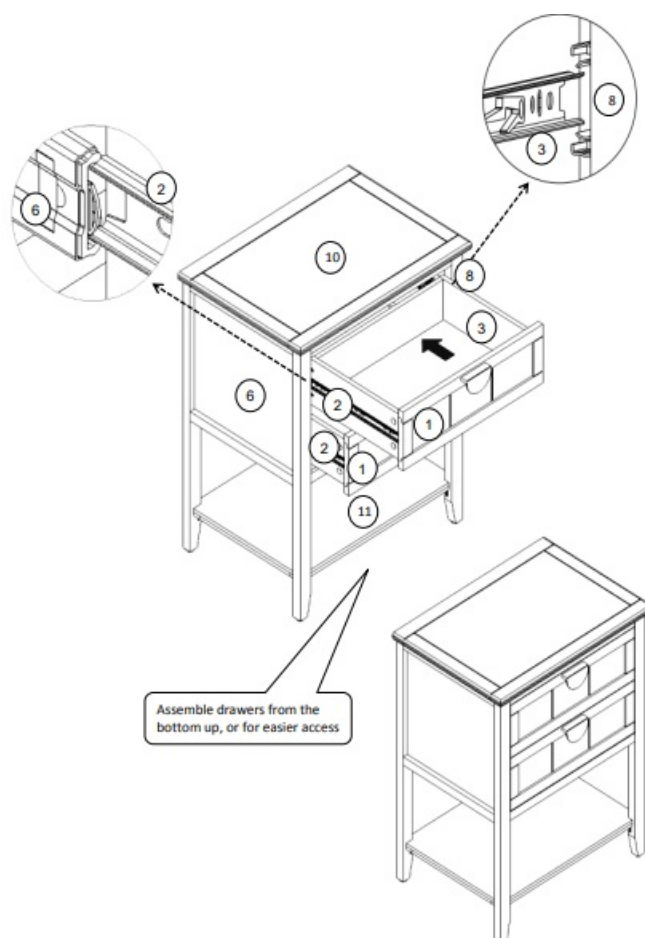


K
8pc

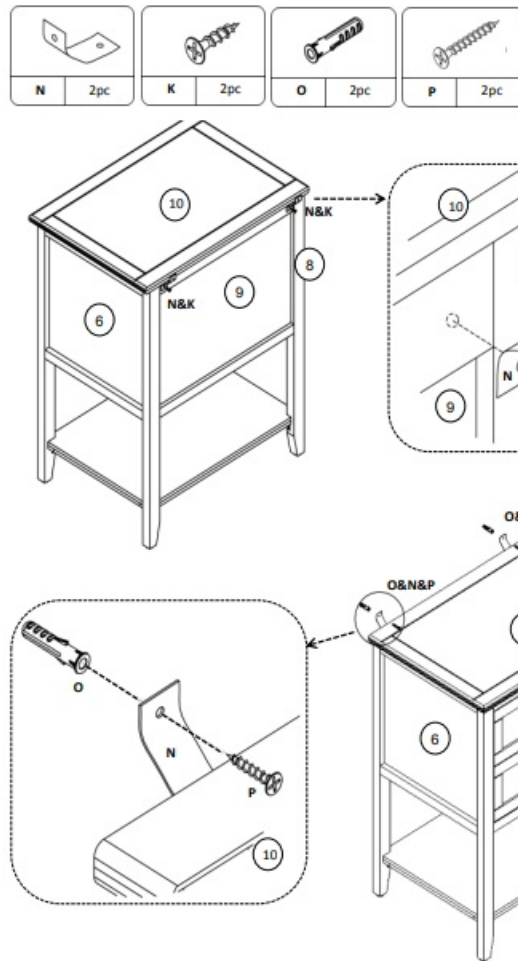
## Step 8



## Step 9



## Step 10



### Proper Use

- **DO NOT** use for commercial purposes
- **DO NOT** use it as a step stool or stand on a table
- **DO NOT** put hot serving liquid directly on the tabletop
- **DO NOT** leave spilled liquid on the tabletop
- **DO NOT** use a table if damaged
- **DO NOT** exceed the weight limit
- **DO NOT** make temporary repairs
- **DO NOT** use outdoor

### Dear Customer:

- Thank you for purchasing our product, we hope you are satisfied with our service, if you have any further questions or any quality issues, please show the below number and don't hesitate to contact our Customer Service People: W688202303

Installation Instruction



Product Name  
**2 Drawer End Table**  
W688202303

[MHS W688202303 2 Drawer End Table](#) [pdf] Instruction Manual  
W688202303 2 Drawer End Table, W688202303, 2 Drawer End Table, Drawer End Table, End Table

## References

- [User Manual](#)

### Manuals+, Privacy Policy

This website is an independent publication and is neither affiliated with nor endorsed by any of the trademark owners. The "Bluetooth®" word mark and logos are registered trademarks owned by Bluetooth SIG, Inc. The "Wi-Fi®" word mark and logos are registered trademarks owned by the Wi-Fi Alliance. Any use of these marks on this website does not imply any affiliation with or endorsement.