

MewooFun
QS16M-Cat
Window-Hammock



MewooFun QS16M Cat Window Hammock User Manual

[Home](#) » [MewooFun](#) » MewooFun QS16M Cat Window Hammock User Manual 

Contents

- [1 MewooFun QS16M Cat Window Hammock](#)
- [2 SAFETY INSTRUCTION](#)
- [3 BOX CONTENT](#)
- [4 Assembly Instruction](#)
- [5 Documents / Resources](#)
 - [5.1 References](#)
- [6 Related Posts](#)

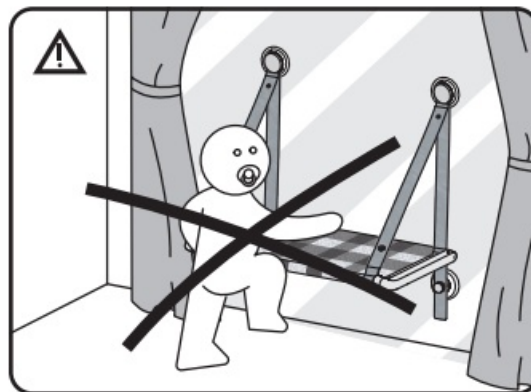
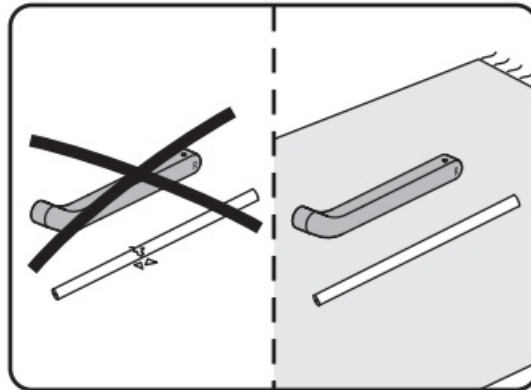
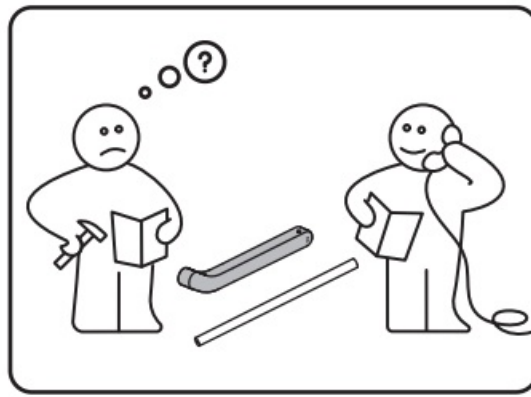
MewooFun

MewooFun QS16M Cat Window Hammock

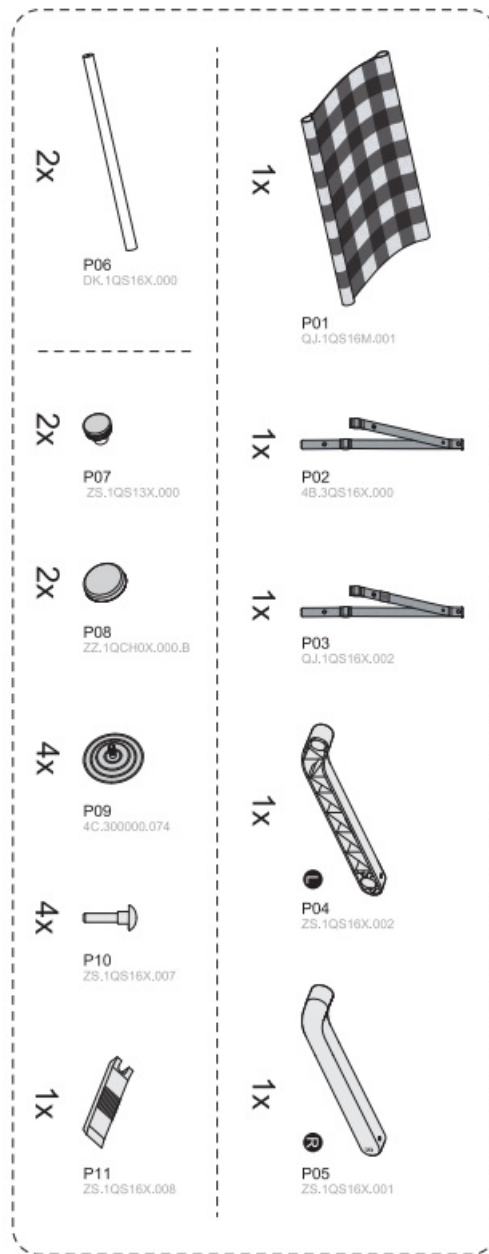
**Attention:**

- For customer service information please contact E-mail: service@mewoofun.com
- Please read this manual carefully before assembling and use the product in strict accordance with the manual.
- Please install it on the floor with high friction such as carpet to avoid floor damage.
- Do not allow children to climb or hang on the panel. Intended to be assembled by an adult. Keep away from children.

SAFETY INSTRUCTION

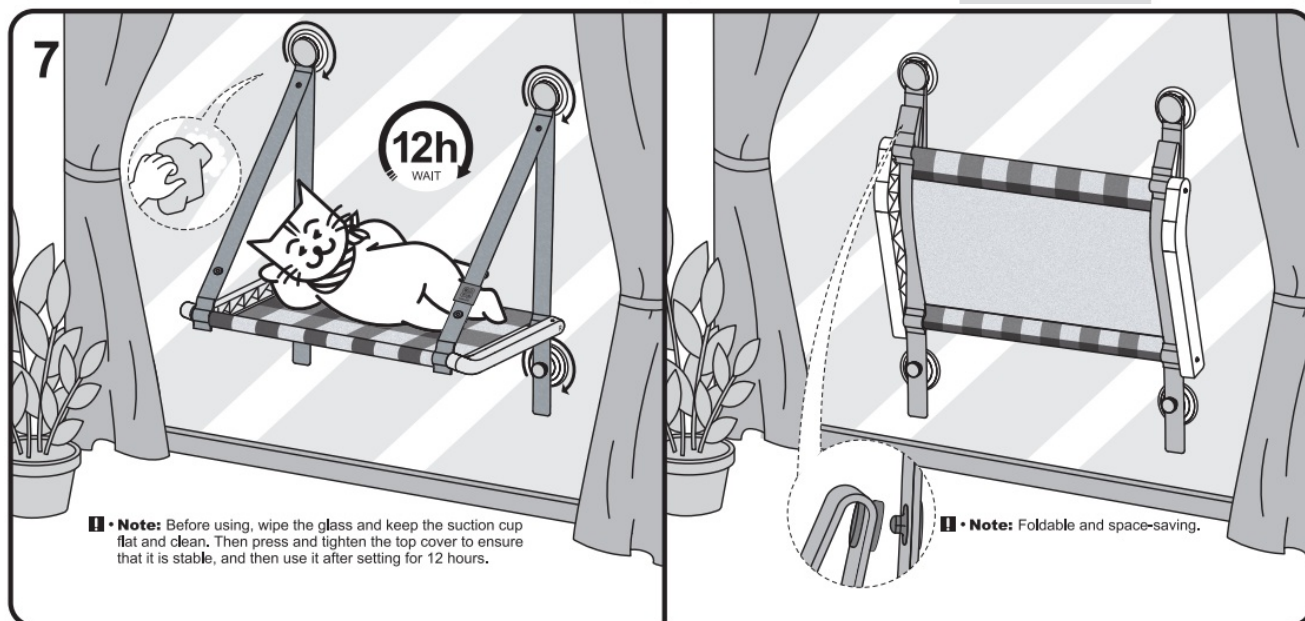
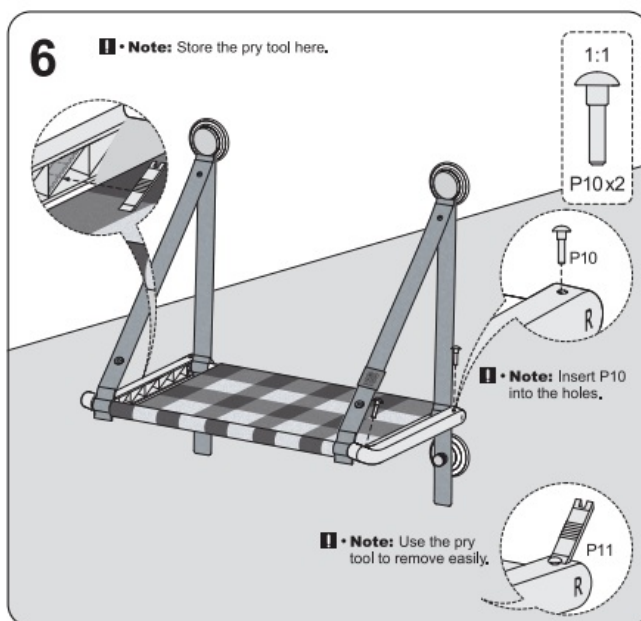
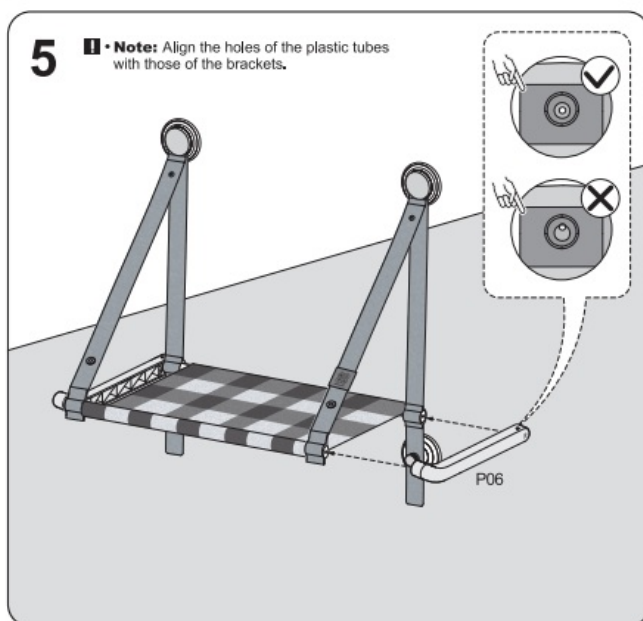
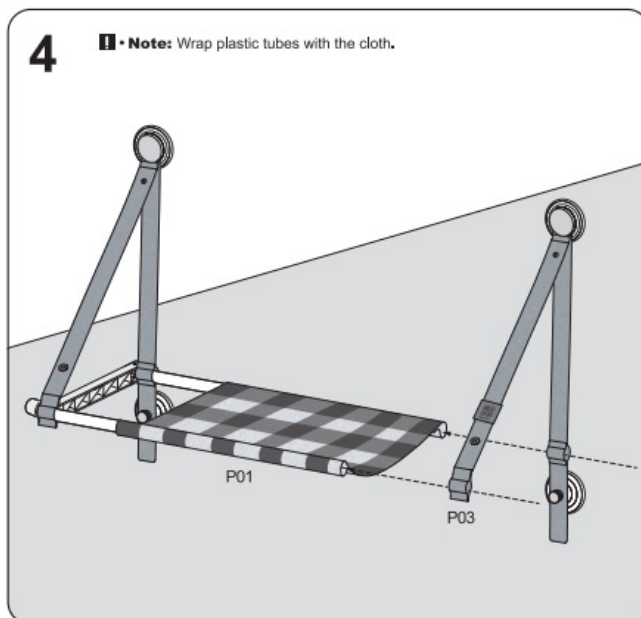
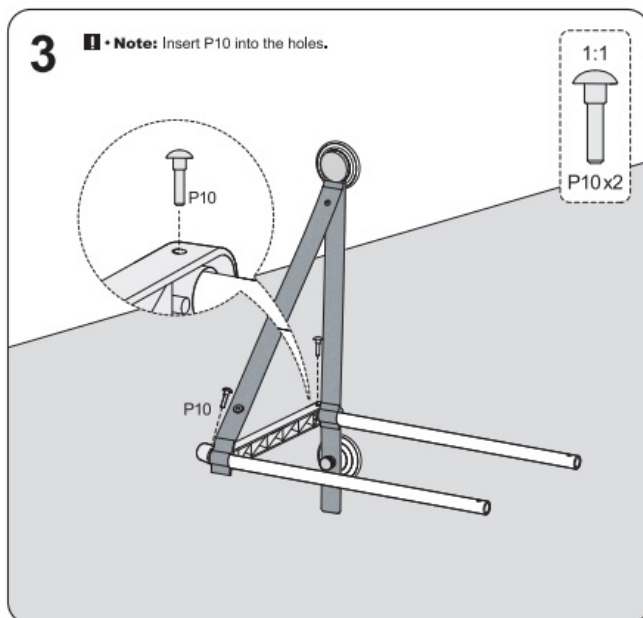


BOX CONTENT



Assembly Instruction

- Note:** Before using the suction cup, soak it in hot water (3-5 minutes) to soften it. If it is deformed due to compression or hardening in winter, it can also be restored to normal after soaking.



4. **Note:** Wrap plastic tubes with the cloth.

5. **Note:** Align the holes of the plastic tubes with those of the brackets.

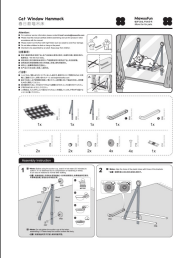
6. **Note:** Store the pry tool here.

7. **Note:** Before using, wipe the glass and keep the suction cup flat and clean. Then press and tighten the top

cover to ensure that it is stable, and then use it after setting for 12 hours.

Note: Foldable and space-saving.

Documents / Resources

	<p>MewooFun QS16M Cat Window Hammock [pdf] User Manual QS16M.000, QS16M- - RT -V1.0, QS16M Cat Window Hammock, QS16M, Cat Window Hammock, Window Hammock, Hammock</p>
---	---

References

- [User Manual](#)

Manuals+, Privacy Policy

This website is an independent publication and is neither affiliated with nor endorsed by any of the trademark owners. The "Bluetooth®" word mark and logos are registered trademarks owned by Bluetooth SIG, Inc. The "Wi-Fi®" word mark and logos are registered trademarks owned by the Wi-Fi Alliance. Any use of these marks on this website does not imply any affiliation with or endorsement.