

MewooFun QM076B Cat Scratching Post Instruction Manual

[Home](#) » [MewooFun](#) » MewooFun QM076B Cat Scratching Post Instruction Manual 

MewooFun QM076B Cat Scratching
Post Instruction Manual

Cat Scratching Post



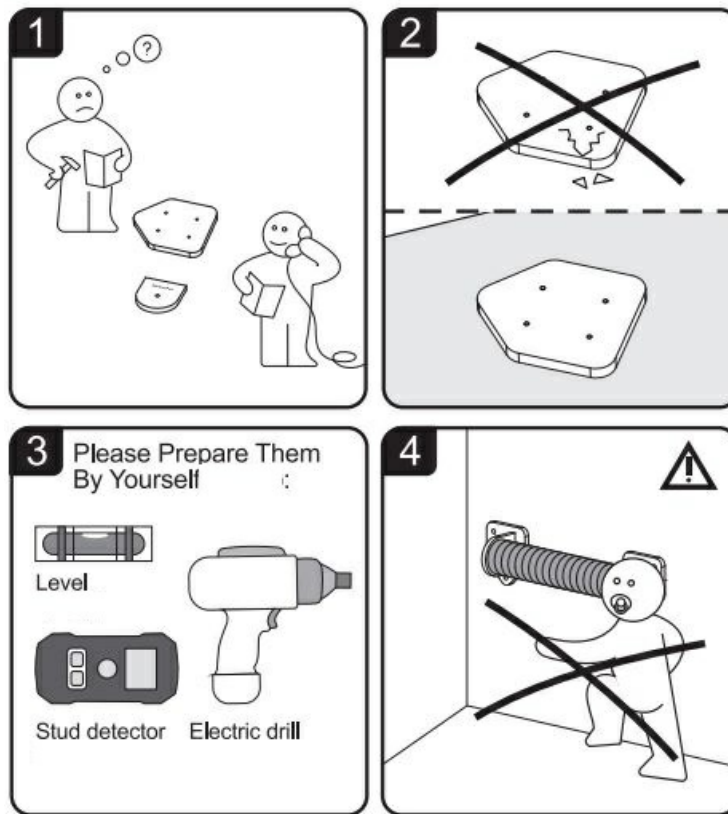
MewooFun

More fun for pets.



Attention:

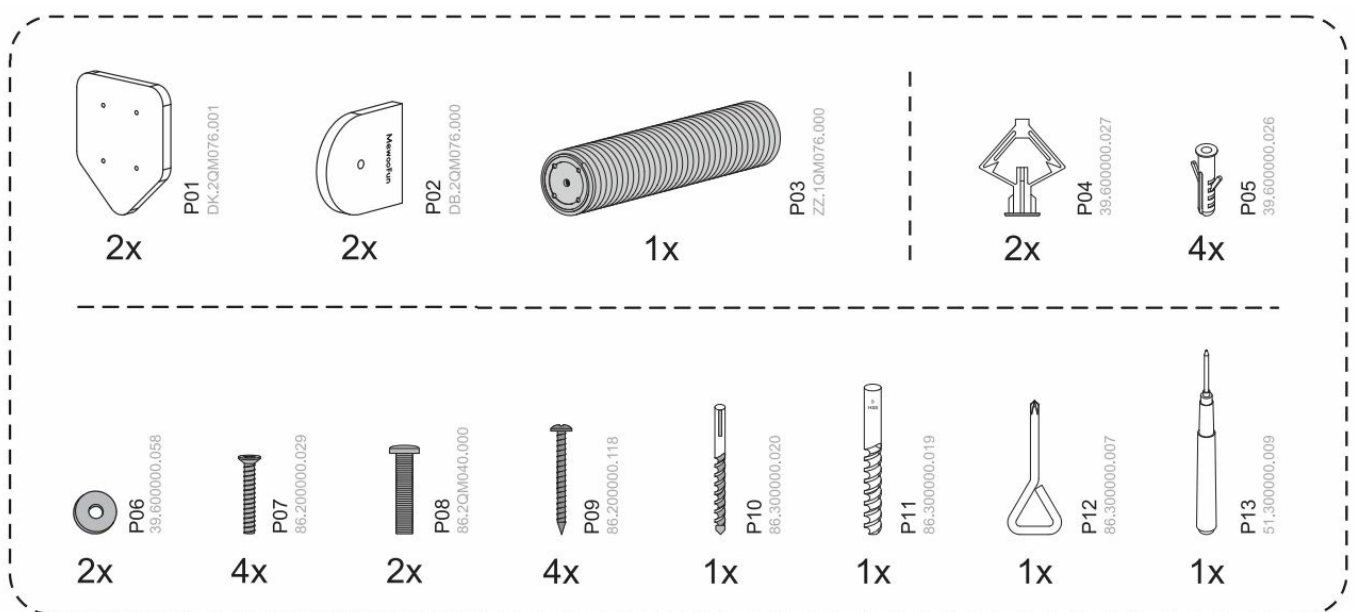
- For customer service information please contact E-mail: service@mewoofun.com
- Please install it on the floor with high friction such as carpet to avoid floor damage.
- The stud detector, the level, and the electric drill are needed when assembling.
Please prepare them yourself.
- Do not allow children to climb or hang on the panel.
- Intended to be assembled by an adult. Keep away from children.
- Please read this manual carefully before assembling and use the product in strict accordance with the manual.



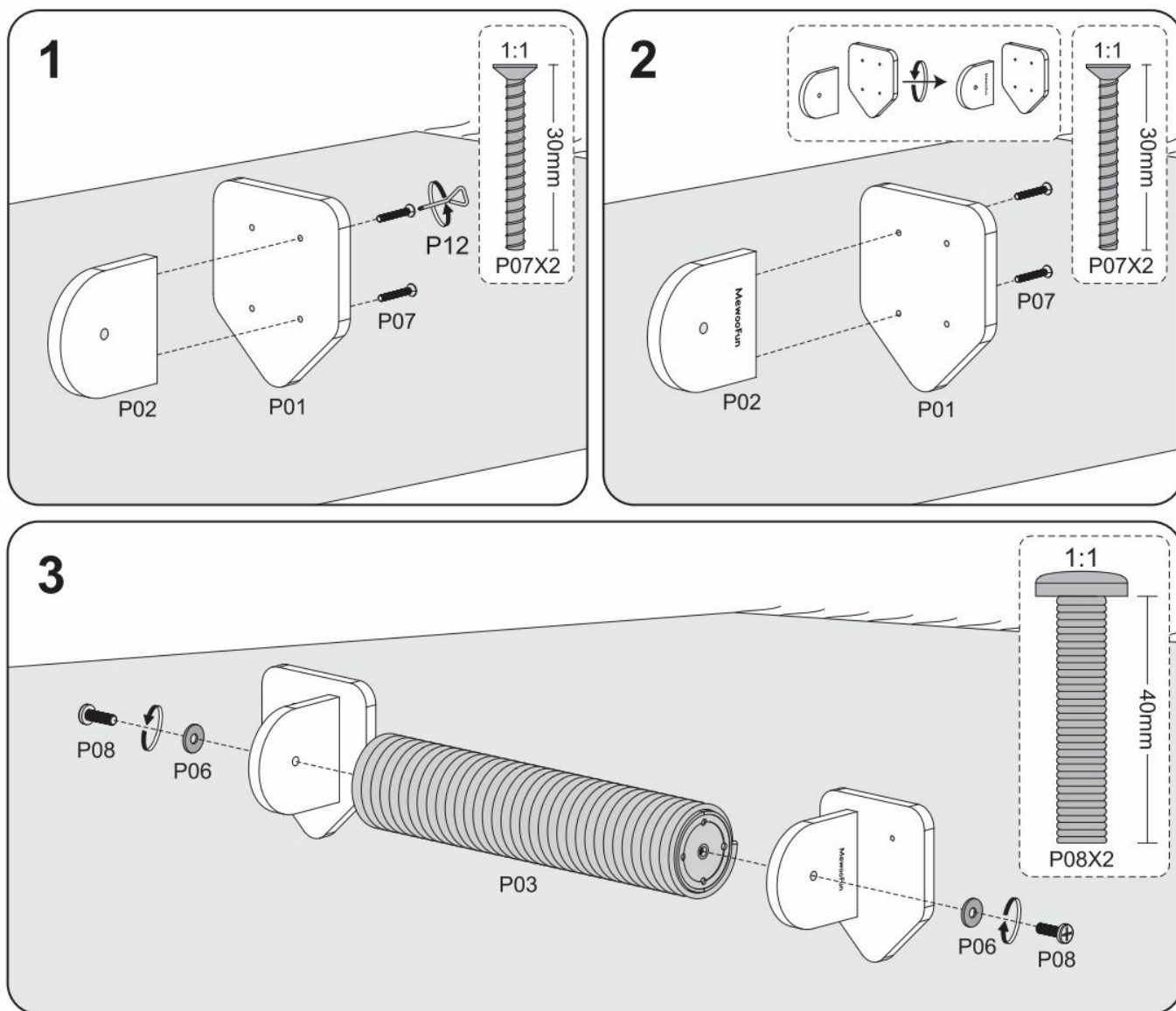
Contents

- [1 Part List](#)
- [2 Assembly Instruction](#)
- [3 Documents / Resources](#)
- [3.1 References](#)

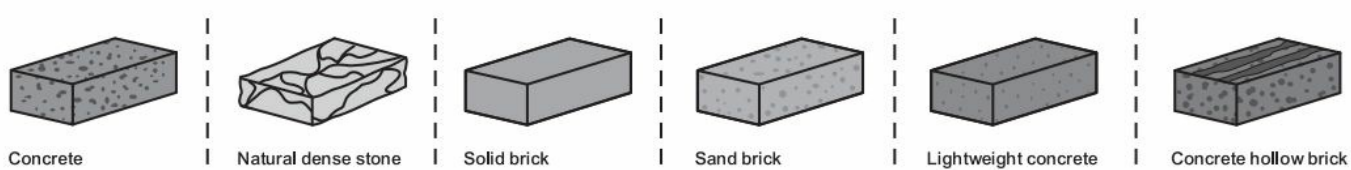
Part List



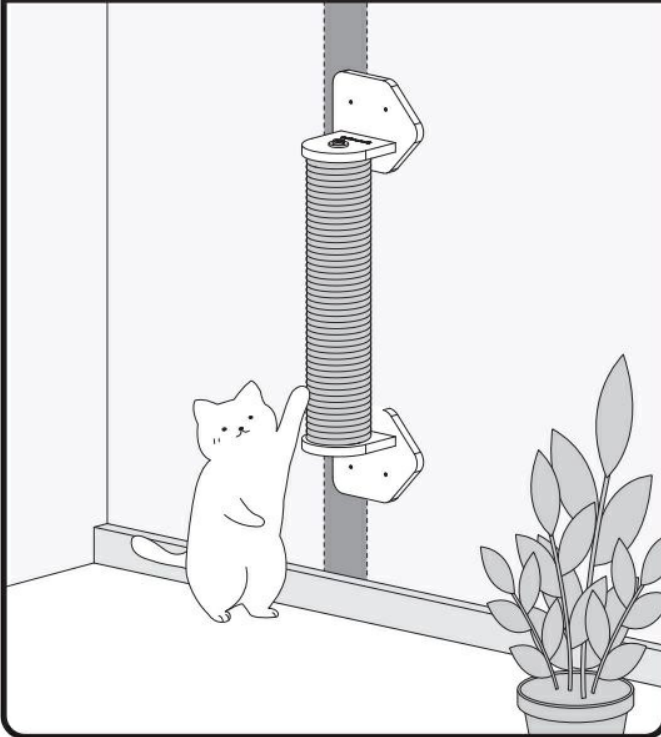
Assembly Instruction



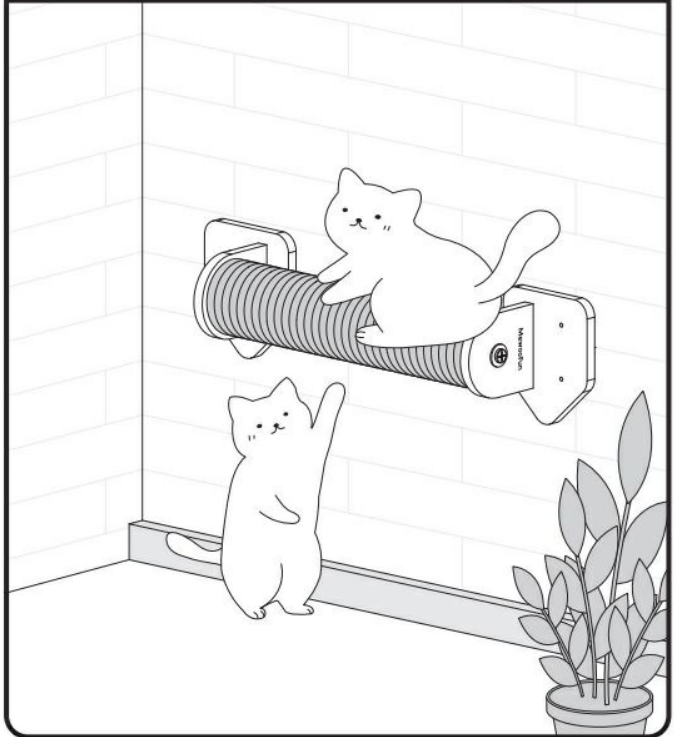
Suitable Bricks/Materials For Style 02



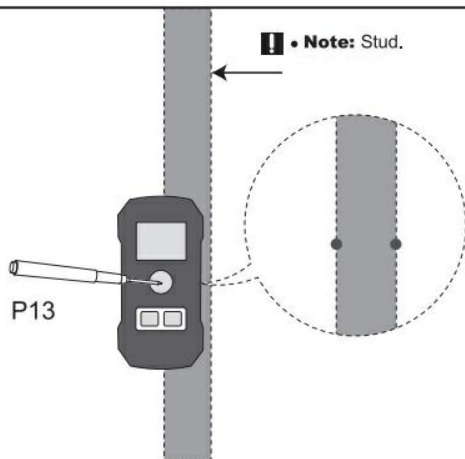
Style 01: Wall Nails For The Stud



Style 02: Wall Nails For Brick Walls



4

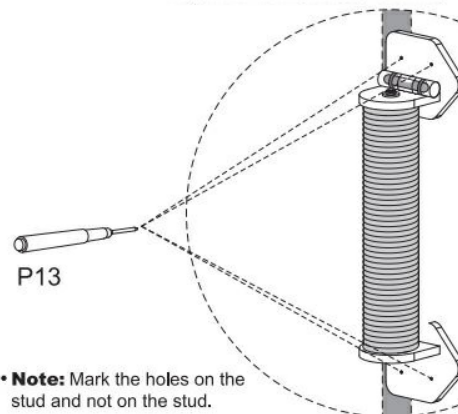


Note: Stud.

Note: Use the stud detector to position the stud inside the wall.

5

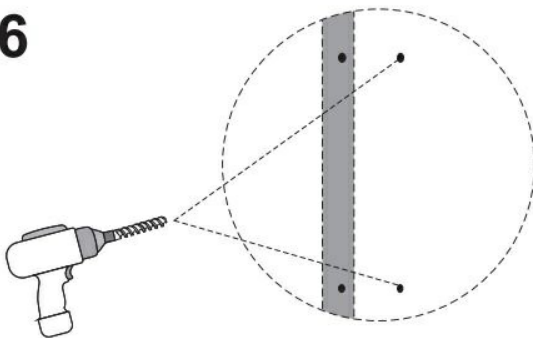
Note: Use the level to keep the product horizontal.



Note: Mark the holes on the stud and not on the wall.

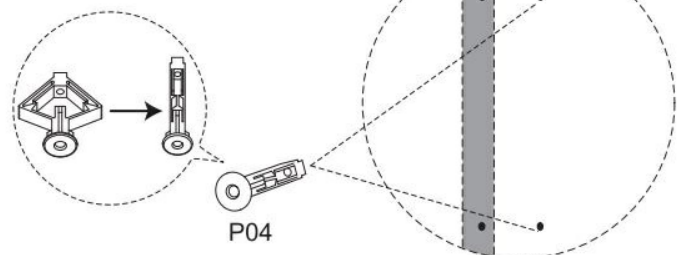
Note: The product assembled on the stud can only be perpendicular to the ground.

6



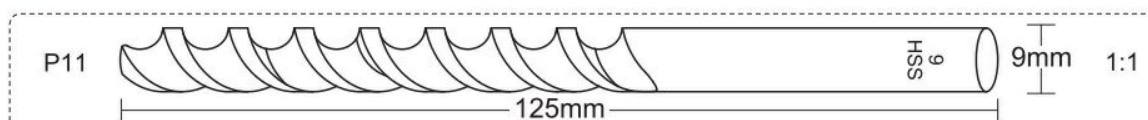
Note: Use the electric drill with a diameter of 9mm to drill holes on all marks not on the stud. Drill through the wall panel when punching.

Note: Straighten the expandable tube P04 first.

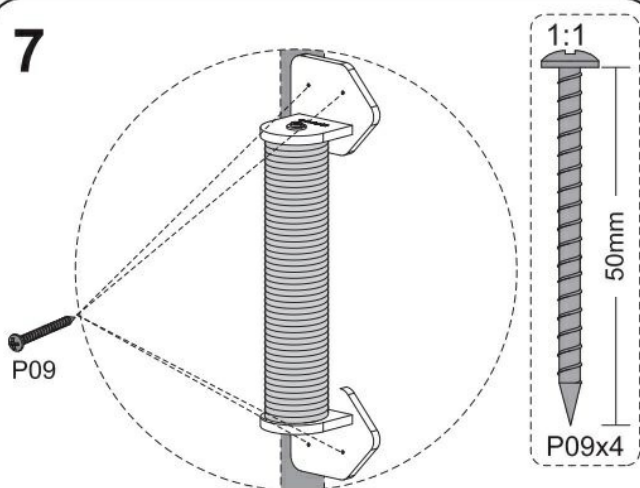


P04

Note: Place the straightened tube into the drilled hole.

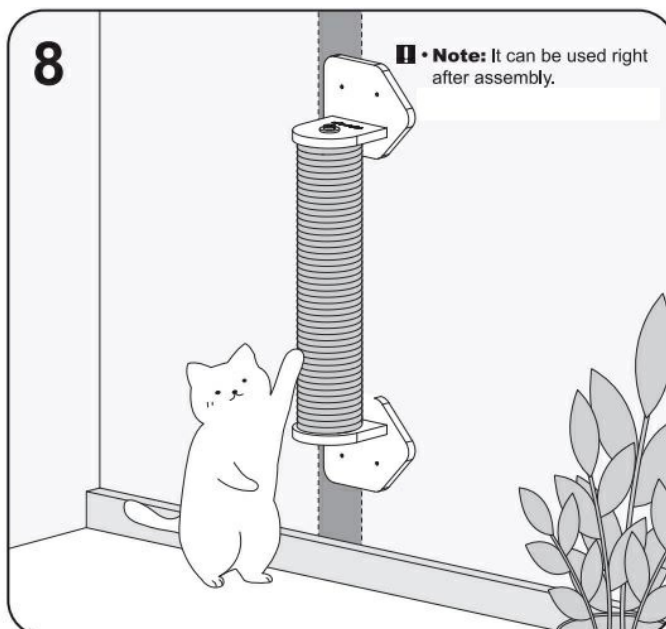


7



Note: Align with holes of the stud and the expandable tube, and drive P09 into them.

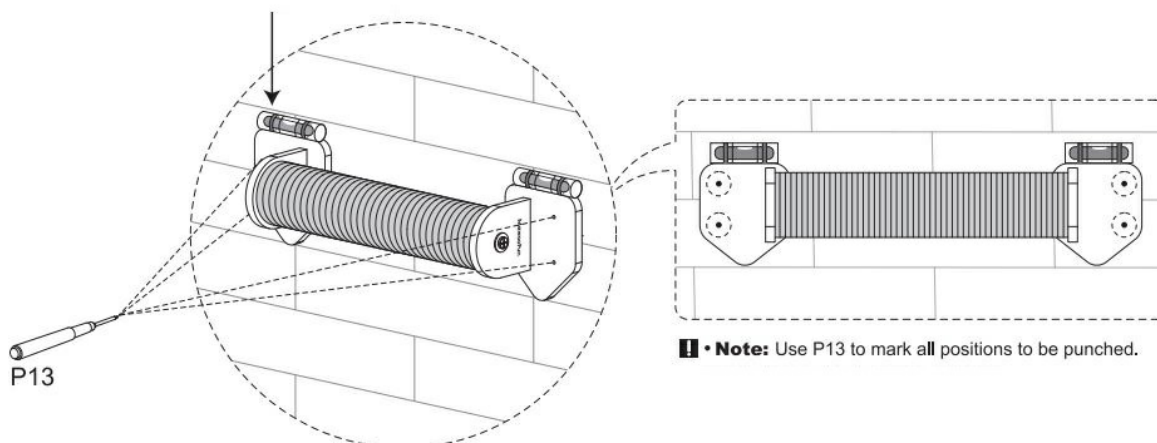
8



Note: It can be used right after assembly.

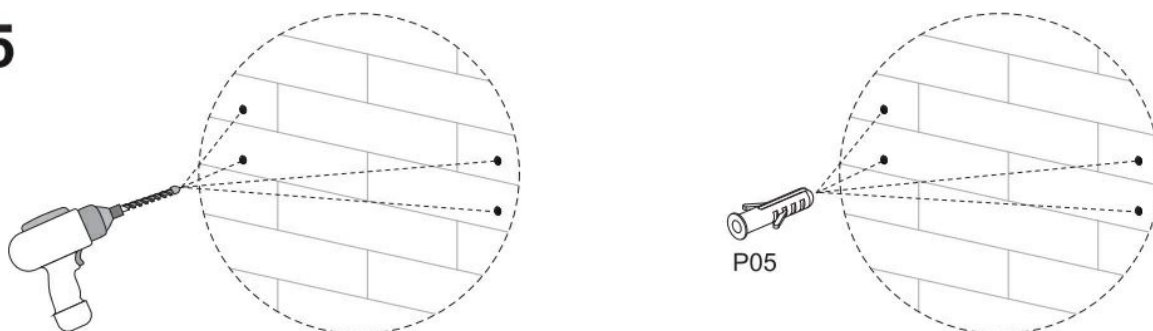
4

Note: Use the level to keep the product horizontal.



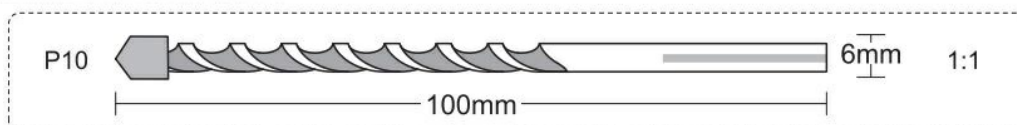
Note: Use P13 to mark all positions to be punched.

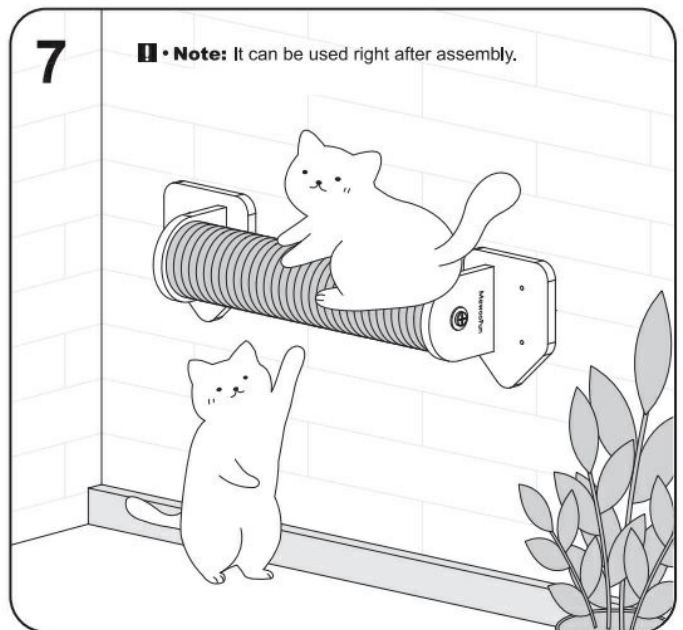
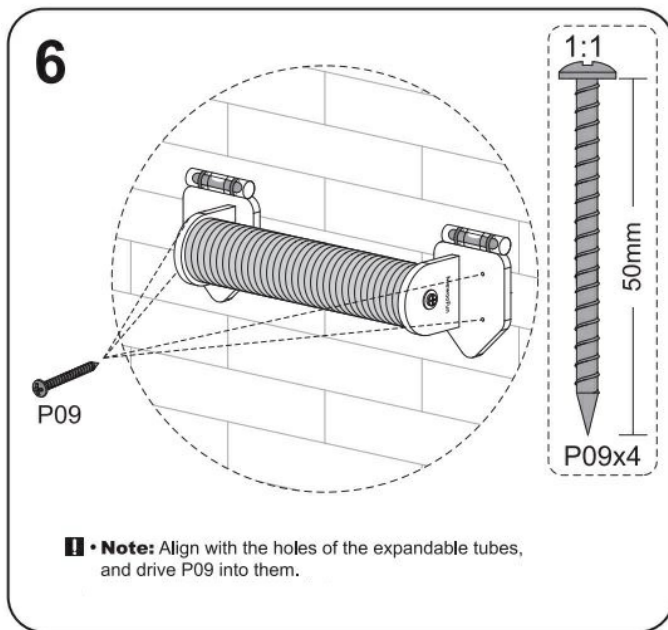
5



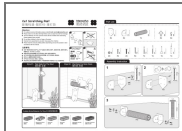
Note: Use the electric drill with a diameter of 6mm to drill holes on marks. The punching depth should be longer than the part to be inserted (the expandable tube P05).

Note: Place the expandable tubes P05 into the drilled holes.





Documents / Resources



[MewooFun QM076B Cat Scratching Post](#) [pdf] Instruction Manual

150, QM076B, QM076B Cat Scratching Post, QM076B, Cat Scratching Post, Scratching Post, Post

References

- [User Manual](#)

[Manuals+](#), [Privacy Policy](#)

This website is an independent publication and is neither affiliated with nor endorsed by any of the trademark owners. The "Bluetooth®" word mark and logos are registered trademarks owned by Bluetooth SIG, Inc. The "Wi-Fi®" word mark and logos are registered trademarks owned by the Wi-Fi Alliance. Any use of these marks on this website does not imply any affiliation with or endorsement.