



MEUBLE COSY Folding Desk for Small Spaces Installation Guide

[Home](#) » [MEUBLE COSY](#) » MEUBLE COSY Folding Desk for Small Spaces Installation Guide 

Contents

- [1 MEUBLE COSY Folding Desk for Small Spaces](#)
- [2 EXPLODED VIEW](#)
- [3 ASSEMBLY INSTRUCTION](#)
- [4 PARTS](#)
- [5 Documents / Resources](#)
 - [5.1 References](#)



MEUBLE COSY Folding Desk for Small Spaces



IMPORTANT

READ CAREFULLY

RETAIN FOR FUTURE REFERENCE

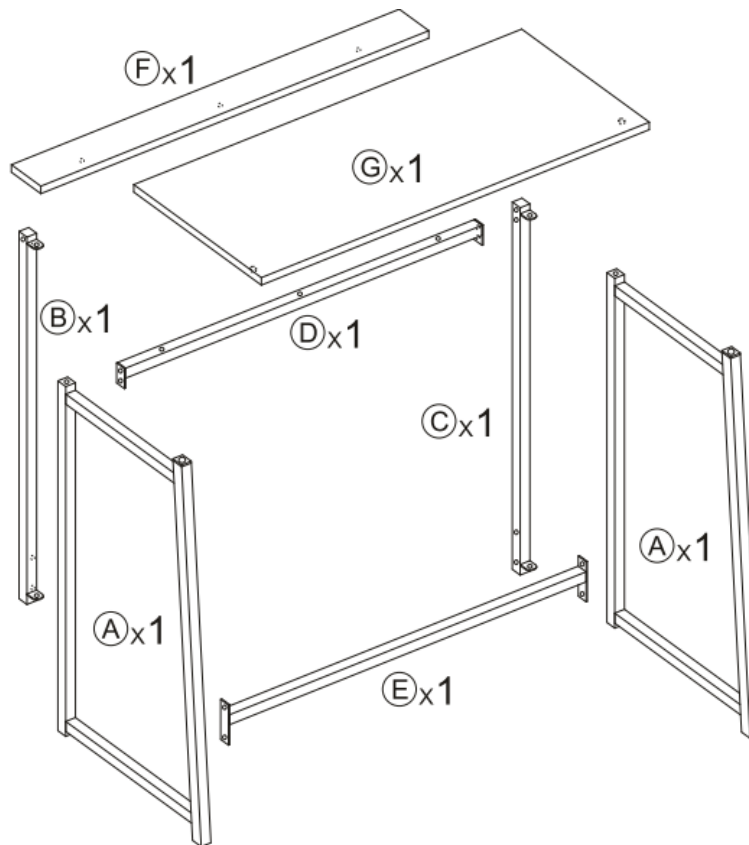
- Children must stay away from the assembly zone, preventing children from potential asphyxia because of plastic bag and foam breathing in nose.
- Do not stand on the product for any purpose.
- For your safety, please do not tread or climb product.
- The loading weight of seating shall be within the range that vendor claims.
- The product is designed for adults use, domestic use and indoor use only.
- The product shall not combine with other product for use.
- Check regularly that all assembly fastenings are properly tightened, do not use the product if any structural part is broken or missing.
- Incorrect installation and incorrect use can cause accidents. Please completely follow the guidance of assembly instruction.

Security instructions:

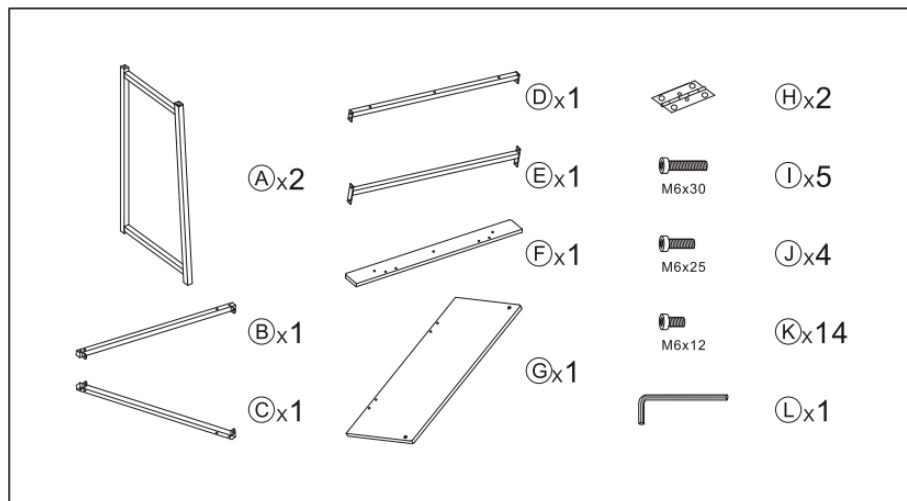
- Before assembling check whether all parts listed in the parts list have been delivered.
- Do not start assembling if parts are missing or damaged.
- A failure to assemble this product correctly could cause damage or result in serious injury!
- Before assembling make sure that you have enough space for the procedure.
- Assemble on a flat surface.
- Keep the assembly instructions available at all times and follow each of the individual steps exactly.
- During assembly, be careful with all the parts of the assembly (do not walk on them or distort them) and beware of shearing and trapping risks. Keep children and pets away while setting up the furniture.

- The product complies with the General Product Safety Regulation (GPSR).

EXPLODED VIEW

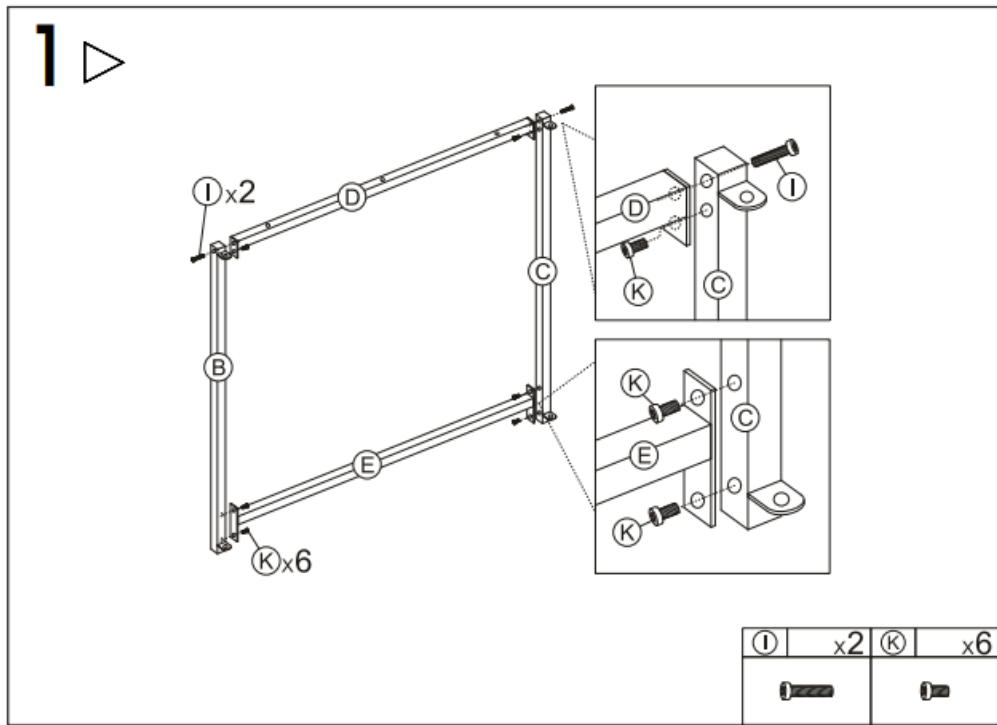


HARDWARE

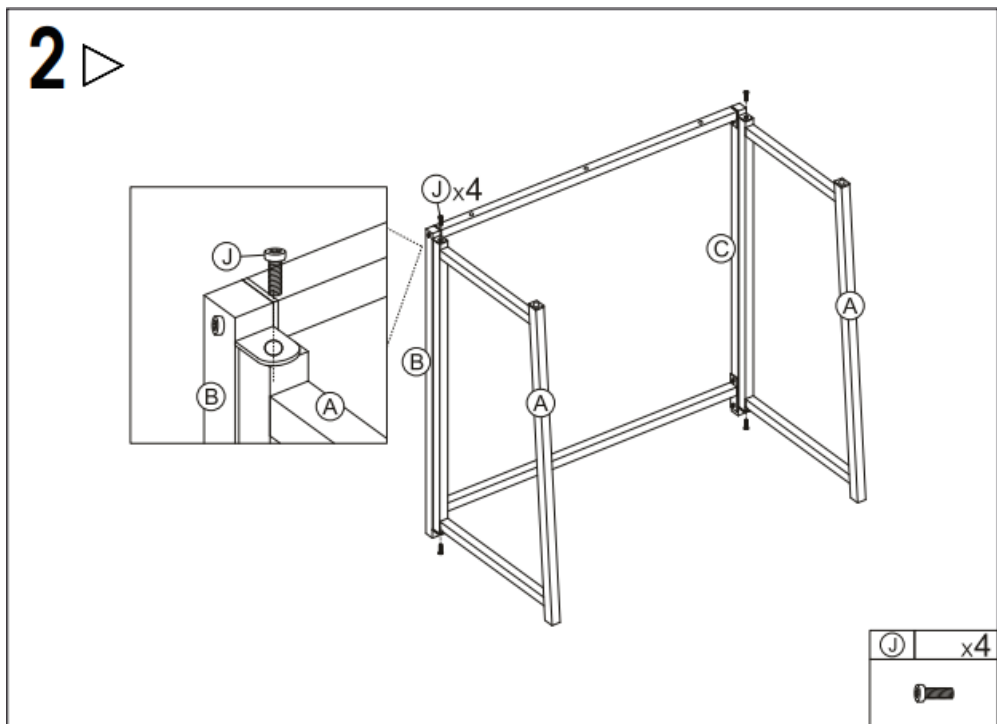


ASSEMBLY INSTRUCTION

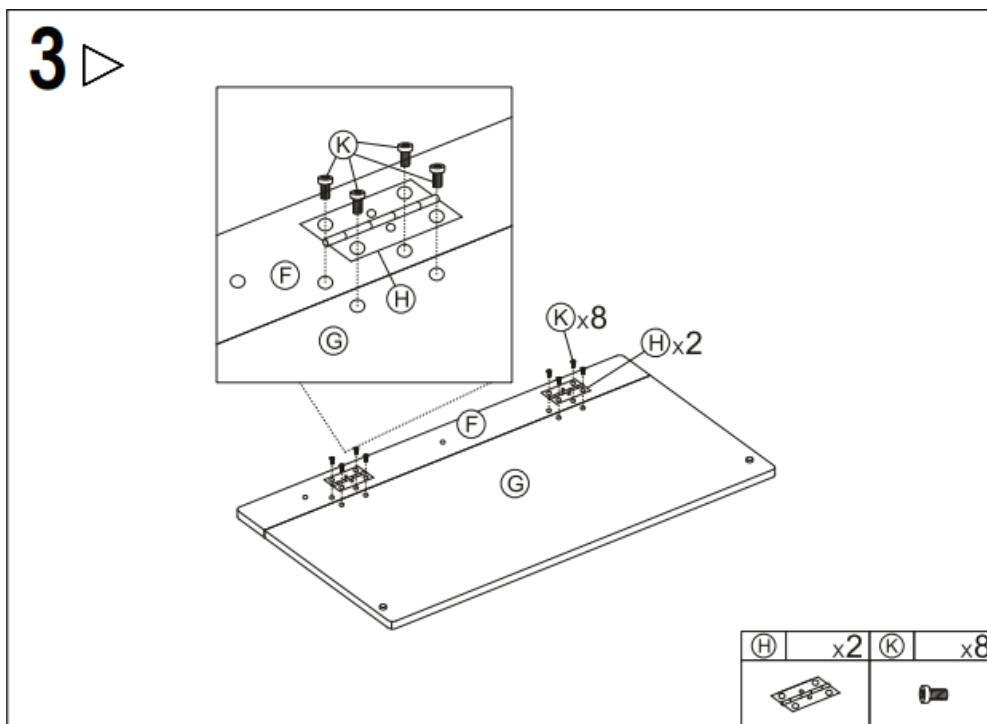
STEP 1



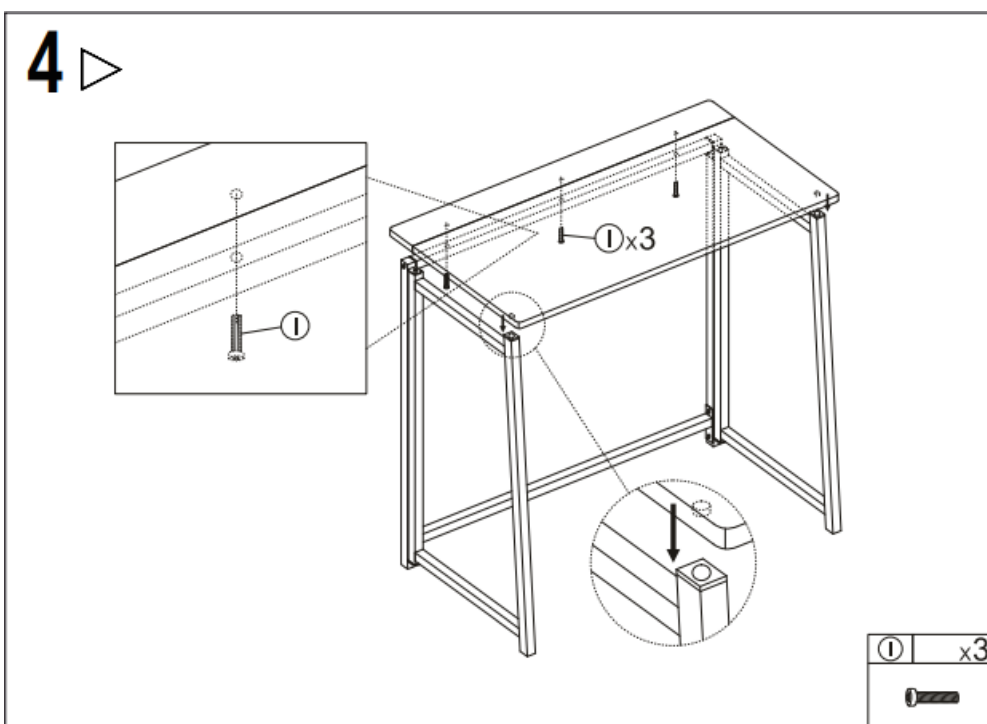
STEP 2



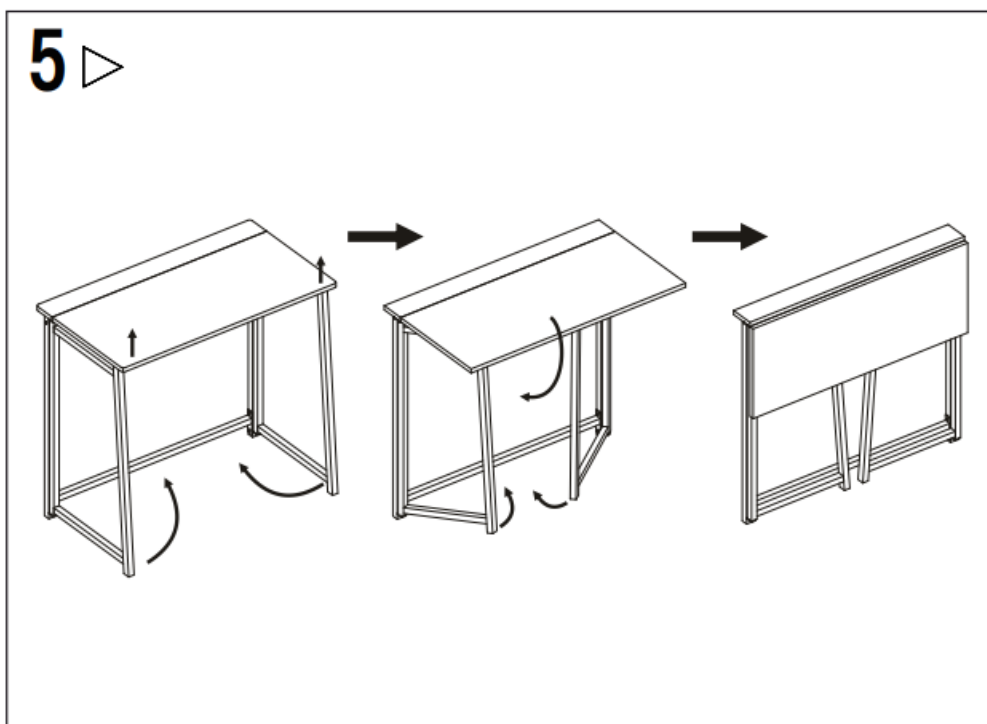
STEP 3



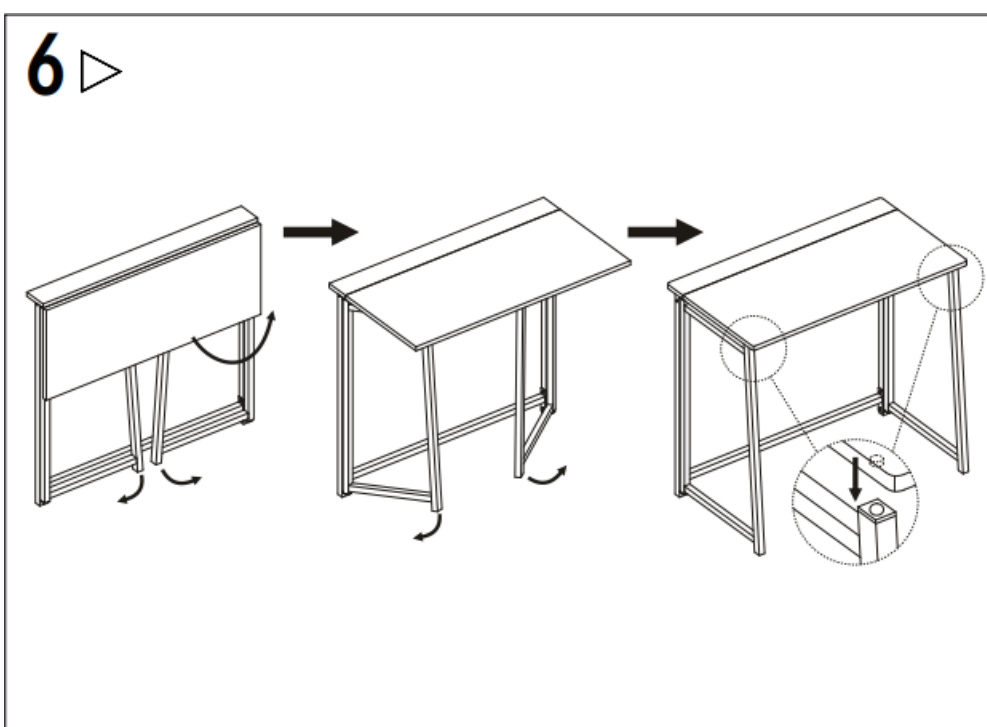
STEP 4



STEP 5



STEP 6



You have decided to buy a product from us , we thank you for your trust and hope you are fully satisfied with your purchase. If for any reason you encounter a problem when assembling this item, please identify the part concerned on this page and call or go to your shop for organizing the replacement. This page is indispensable for the following of your claim.

FICHE SERVICE-APRES VENTE AFTER SALE SHEET BEIBLATT KUNDENDIENST FICHA POST-VENTA
SERVICE CUSTOMER SERVICE SHEET

PARTS

