

metrix

MTX 3297Ex Intrinsically
Safe 60000 Point TRMS
Digital Multimeter



metrix MTX 3297Ex Intrinsically Safe 60000 Point TRMS Digital Multimeter Instruction Manual

[Home](#) » [metrix](#) » metrix MTX 3297Ex Intrinsically Safe 60000 Point TRMS Digital Multimeter Instruction Manual



Contents

- [1 metrix MTX 3297Ex Intrinsically Safe 60000 Point TRMS Digital Multimeter](#)
- [2 PRECAUTIONS FOR SAFETY](#)
- [3 BATTERY REPLACEMENT](#)
- [4 Documents / Resources](#)
 - [4.1 References](#)
- [5 Related Posts](#)

metrix

metrix MTX 3297Ex Intrinsically Safe 60000 Point TRMS Digital Multimeter



IECEX ATEX SAFETY INSTRUCTIONS

This manual describes the safety instructions that the operator must comply with for safe, reliable operation of the product in hazardous areas. Failure to follow these instructions can have dangerous consequences. You should read it in full before using the instrument.

PRECAUTIONS FOR SAFETY

- You must comply with the prescriptions, regulations and electrical data described in the Ex certificate of conformity.
- This equipment can only be operated by users trained on equipment placed in a hazardous area.
- Check that the atmosphere and temperature conditions, where the equipment is used, comply with the certification.
- Do NOT replace the fuse or batteries in a hazardous area.
- Do NOT replace the fuse or batteries with non-certified parts. If components are substituted, it will reduce conformity to the hazardous location and may cause an explosion.
- Use only certified accessories.
- Comply with the maximum voltage of 65 V and the maximum current of 5 A in explosive zones.
- Do not use the instrument on networks of whose the voltage or category exceeds those mentioned.
- Do not use the instrument if it seems to be damaged, incomplete, or incorrectly closed.
- Before each use, check the condition of the insulation on the leads, housing, and accessories. Any item whose insulation has deteriorated (even partially) must be set aside for repair or scrapping.
- All troubleshooting and metrological checks must be performed by competent, and accredited personnel.

The MTX 3297Ex handheld Multimeter is built according to the following:

ATEX requirements:

- European certification scheme (2014/34/EU Directive)
- EN IEC 60079-0: 2018 – General Requirements
- EN 60079-11: 2012 – Intrinsic safety “i”
- Ex ia I Ma
- II 1G D
- Ex ia IIC T4 Ga
- EX ia IIIC T135 °C Da
- $-10\text{ °C} \leq T_a \leq +55\text{ °C}$
- Certification number: LCIE 19 ATEX 3011 X

IECEx requirements:

- International certification scheme (IECEx)
- International standards in the IEC 60079 series
- IEC 60079-0: Ed 7 – General Requirements
- IEC 60079-11: Ed 6 – Intrinsic safety “i”
- Ex ia I Ma
- Ex ia IIC T4 Ga
- Ex ia IIIC T135 °C Da
- $-10\text{ °C} \leq T_a \leq +55\text{ °C}$
- Certification number: IECEx LCI 19.0003X

FOR CONNECTIONS TO INTRINSICALLY SAFE CIRCUITS, CHECK THE FOLLOWING CONNECTIONS:

Voltage input “V”

- U input $\leq 65\text{ V}$ C input = negligible I input = negligible L input = negligible

Current input “A”

- U input $\leq 65\text{ V}$ C input = negligible I input $\leq 5\text{ A}$ L input = negligible

FOR MEASUREMENTS ON PROTECTED CIRCUITS:

- Compliant for zones 0, 1 and 2, equipment group II, category 1G, explosion group IIC (explosive gases, and vapours), temperature categories T4.
- Suitable for zones 20, 21 and 22, equipment group II, category 1D, explosion group IIIC, dust, fibres and conductive and non-conductive projections.
- Suitable for use in mines, equipment group I, category M1, explosion group I, methane, and coal dust.

Use in hazardous areas

After using the multimeter in a safe zone, there is no waiting time required before using the same equipment in an explosive zone.

FUSE REPLACEMENT

Opening of the device must be done mandatory in safe area.

Before replacing the fuse (accessible through the opening at the bottom of the casing), disconnect the instrument from any power source. When replacing, make sure that only a fuse of the correct size and type specified is used. The use of an incorrect fuse and short-circuiting of the fuse holder are strictly forbidden.

Verification of the current fuse: F – 10 A – 10 x 38 – 1000 V – 30 kA:

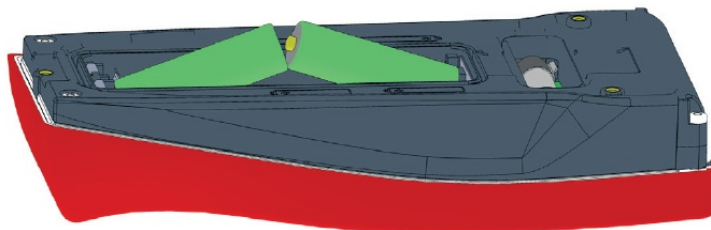
- Metrix / Chauvin Arnoux fuse reference: AT0097
- SIBA fuse reference: 5019906.10
- The flat gasket and the bottom of the casing must be properly seated to establish the seal.



BATTERY REPLACEMENT

Opening of the device must be done mandatory in safe area.

Before replacing the batteries (accessible through the battery door), disconnect the instrument from any power source.



The instrument is powered by certified batteries FR6 format, 1.5 V Lithium Iron Disulphide:

- Metrix / Chauvin Arnoux battery reference: HX0097,
- ANSMANN battery reference :1502-0005,

The flat gasket and the bottom of the casing must be properly seated to establish the seal. After replacing the batteries, wait 10 s before restarting the instrument.

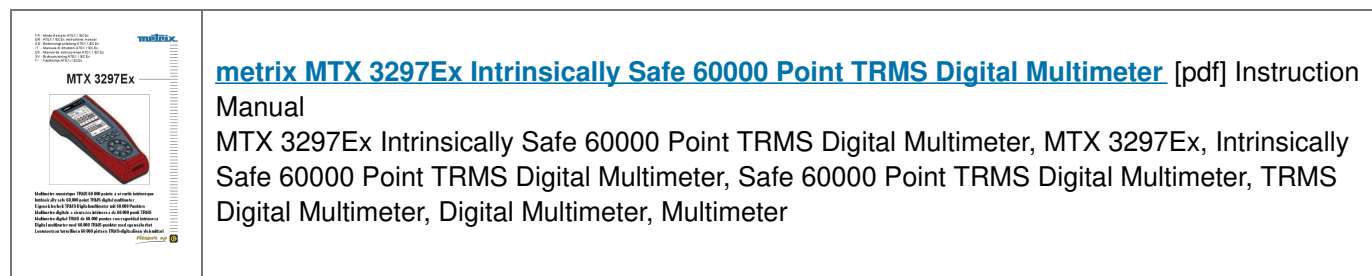
FRANCE

Chauvin Arnoux
12-16 rue Sarah Bernhardt
92600 Asnières-sur-Seine
Tél : +33 1 44 85 44 85
Fax : +33 1 46 27 73 89
info@chauvin-arnoux.com
www.chauvin-arnoux.com

INTERNATIONAL

Chauvin Arnoux
Tél : +33 1 44 85 44 38
Fax : +33 1 46 27 95 69
 Our international contacts
www.chauvin-arnoux.com/contacts

Documents / Resources



References

- [Untitled Document](#)
- [User Manual](#)

Manuals+. Privacy Policy

This website is an independent publication and is neither affiliated with nor endorsed by any of the trademark owners. The "Bluetooth®" word mark and logos are registered trademarks owned by Bluetooth SIG, Inc. The "Wi-Fi®" word mark and logos are registered trademarks owned by the Wi-Fi Alliance. Any use of these marks on this website does not imply any affiliation with or endorsement.