



Metra Electronics JP-708RGBKT Low Voltage Chasing RGB Controller Installation Guide

[Home](#) » [Metra Electronics](#) » Metra Electronics JP-708RGBKT Low Voltage Chasing RGB Controller Installation Guide 

Metra Electronics JP-708RGBKT Low Voltage Chasing RGB Controller



Contents

- [1 Product Features](#)
- [2 Part Components](#)
- [3 BEFORE YOU START](#)
- [4 FCC NOTE](#)
- [5 WRANGLER JK HEADLIGHT REMOVAL](#)
- [6 WRANGLER JK FOG LIGHT REMOVAL](#)
- [7 WRANGLER JL AND GLADIATOR HEADLIGHT REMOVAL](#)
- [8 WRANGLER JL AND GLADIATOR FOG LIGHT REMOVAL](#)
- [9 INSTALLATION](#)
- [10 JP-707RGBKT](#)
- [11 Documents / Resources](#)
- [12 Related Posts](#)

Product Features

- Chasing LED halos
- Turn signal function
- App and RF remote controlled

Part Components

A) Headlight & Fog Light Se



B) Pro Chasing Controller



C) Remote and Hardware



Wrangler JK

- Plastic pry tool
- T-15 Torx® driver

Wrangler JL & JT

- Plastic pry tool
- 8mm driver
- 10mm driver
- T-25 Torx® driver

General

- Phillips screw driver
- Crimper
- Stripper
- Pick tool
- Side cutter
- Electrical tape
- Cable ties

Attention! When testing the aftermarket equipment, ensure that all fadorv equipment is connected before cycling the key to ignition.

BEFORE YOU START

Before you start, make sure you have everything that is needed for the installation. These models require additional parts.*

2010-2018 Wrangler JK Any trim

- JP-JWFLAH adapter harness

2010-2018 Wrangler JK
-Hard Rock Rubicon X
-10th Anniversary Edition

- JP-JF0G fog light bracket
- JP-JWFLAH adapter harness

2018-Up Wrangler JL
-Any trim
2020-Up Gladiator
-Any trim

- JP-JLB7 headlight bracke
- JP-LAHI (optional) DRL
- JP-JWFLAH adapter harness

2018-Up Wrangler JL
-Sport
2020-Up Gladiator
-Sport

- JP-JLB7 headlight bracket
- JP-LAHI (optional) DRL adapter
- JP-JF0G2 fog light bracke
- JP-JWFLAH adapter harness

2018-Up Wrangler JL
-Rubicon
-Sierra
2020-Up Gladiator
-Rubicon
-Sierra

- JP-JLB7 headlight bracket
- JP-LAHI (optional) DRL adapter
- JP-JF0G fog light bracket
- JP-JWFLAH adapter harness

FCC NOTE

1. Warning: Changes or modifications to this unit not expressly approved by the party responsible for compliance could void the user's authority to operate the equipment.
2. This device complies with Part 15 of the FCC Rules. Operation is subject to the following two conditions:
 - (1) this device may not cause harmful interference, and
 - (2) this device must accept any interference received, including interference that may cause undesired

operation.

WRANGLER JK HEADLIGHT REMOVAL

1. Open hood and remove the (6) push pin clips across the top of the grille using a plastic pry tool. (Figure A)
2. Gently lean grille forward to access panel clips at rear bottom of grille. Using a panel pry tool, release grille from clips. (Figure B)
3. Disconnect the left and right turning signal. (Figure C)
4. Remove the (4) T-15 Torx® screws from each headlight retaining ring. New headlights will be secured in place with the factory hardware.(Figure D)
5. Unplug and remove the headlight.
6. Trim off keyway from the factory mounting plate. (Figure E)
7. Connect the included H4 adapter and Canbus decoder to the vehicle harness for each headlight.
8. Continue to fog light removal on page 4.

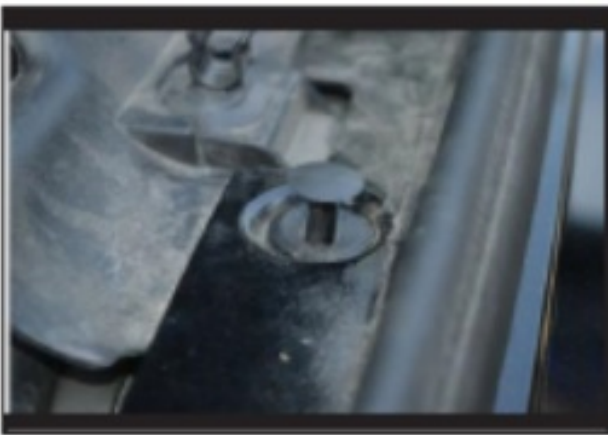


Figure A



Figure B



Figure C



Figure D



Figure E

WRANGLER JK FOG LIGHT REMOVAL

1. Unscrew the (4) plastic screws securing the OE air dam to the bottom of the front bumper, remove screws and inserts (Figure A)
2. Remove the remaining (2) plastic screws securing the air dam to the lower cross member. (Figure B)
3. Locate the wiring harness plug, lift up the clip and pull connector off of fog light. (Figure C)
4. Remove the (4) screws securing each fog light to the bumper and remove the fog lights. (Figure D)
5. For 2007-2009 Wrangler continue to installation on page 7.
6. For 2010-2018 Wrangler plug JP-JWFLAH (not included) into factory harness.
7. Continue to installation on page 7.



Figure A



Figure B



Figure C



Figure D

WRANGLER JL AND GLADIATOR HEADLIGHT REMOVAL

1. Open hood and remove the (6) push pin clips across the top of the grille using a plastic pry tool. (Figure A)
2. Pressure clips will be the only things holding the grille to the Jeep at this point. Pull from the bottom corner of the grille to release the clips and remove grille. (Figure B)
3. Remove the (3) 10mm bolts from the headlight assembly.
4. Unplug and remove the headlight.
5. Install JP-JLB7 headlight brackets (not included), and plug the H4 to OE adapter into the factory headlight harness (included with JP-JLB7).
6. Continue to fog light removal on page 6.



Figure A



Figure B

WRANGLER JL AND GLADIATOR FOG LIGHT REMOVAL

1. Using pry tool lift insert from center of clip, remove the (8) inserts and clips from lower air dam. (Figure A)
2. Remove the (2) 8mm retainer bolts from the lower air dam. (Figure A)
3. Remove splash guard/bumper cover
 - a. **Sport** -splash guards. (Figure B) Remove (1) 8mm bolt, and (6) T-25 Torx® screws from bumper splash guards. (Figure C)
 - b. **Rubicon/ Sierra** -bumper cover. Using pry tool to remove 6 panel clips.
4. Removing the fog lights
 - a. **Rubicon**
Remove (4) 8mm screws holding light in, and disconnecting harness. (Figure D)
 - b. **Sport**
Remove (3) T-25 Torx® screws holding fog light bracket on. (Figure E)
5. Plug JP-JWFLAH (not included) into factory harness.
6. Continue to installation on page 7.



Figure A



Figure B



Figure C



Figure D



Figure E

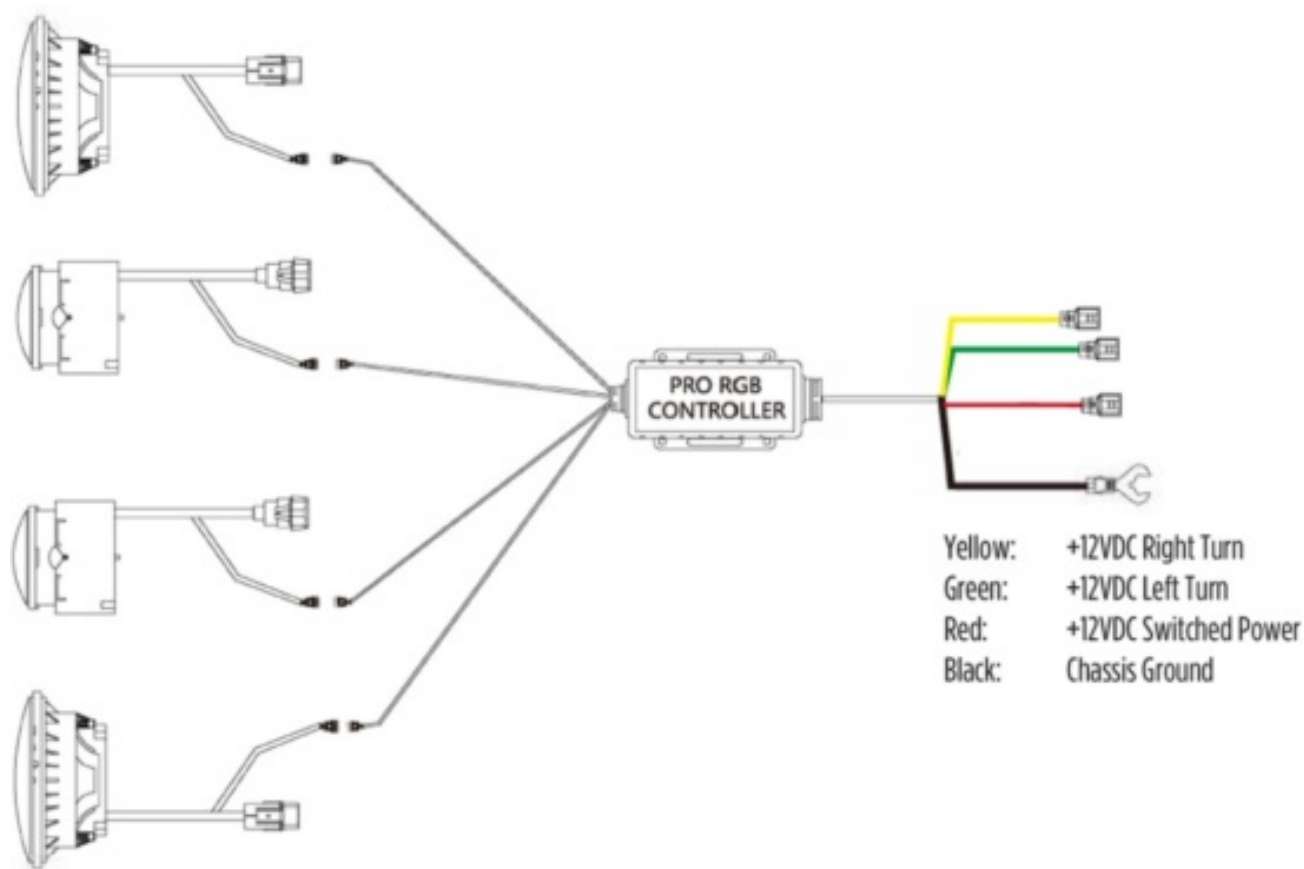
INSTALLATION

1. Locate a suitable location to mount the Pro Chasing controller inside the engine bay.
2. Connect the black wire from the controller to chassis ground. There are several factory ground points along the fire wall and sides of the engine bay.
3. Connect the red wire from the controller to a switched +12VDC source. Adding a 10 amp in-line fuse is recommended. On 2018-Up Wrangler JL and 2020-Up Gladiator, using the JP-LAHI (sold separately) will provide an easy light switch controlled power source.
4. Using a digital multi-meter, locate the +12VDC wire for the left and right turn signals located at the lights. Note

the wire colors. Connect the green wire from the controller to the left (driver) turn signal wire, and connect the yellow to the right (passenger) turn signal wire.

5. Run the left channel 4 pin cables to the driver side headlight and fog light locations, making sure to avoid hot surfaces and pinch points. Secure the cables approximately every six inches.
6. Run the right channel 4 pin cables to the passenger side headlight and fog light locations, making sure to avoid hot surfaces and pinch points. Secure the cables approximately every six inches.
7. Connect the 4 pin cable to the new headlight and plug the H4 connector into the vehicle harness or previously installed adapter. Mount headlight into vehicle, then repeat on the other side.
8. Connect the 4 pin cable to the new fog light and plug the 9145 connector into the vehicle harness or previously installed adapter. Mount fog light into vehicle, then repeat on the other side. Download app (QR code on back cover of instructions) for smart phone control, and refer to Pro Controller instructions for setup. Pro Controller can also be controlled from RF remote (included).
9. Test the low beam, high beam, turn signals, and chasing functions.
10. Perform any needed adjustments on the new headlights and fog lights. The adjustment is to properly aim the lights to generate the correct beam pattern. Details on the procedure can be found in the vehicle service manual. There is also support videos on MetraOnline.com.
11. Reinstall grille and any other removed panels.

JP-707RGBKT



Having difficulties? We're here to help.



Contact our Tech Support line at: 386-257-1187



Or via email at: techsupport@metra-autosound.com

Tech Support Hours (Eastern Standard Time)

Monday -Friday: 9:00 AM – 7:00 PM

Saturday: 10:00 AM – 7:00 PM

Sunday: 10:00 AM – 4:00 PM



® KNOWLEDGE IS POWER

Enhance your installation and fabrication skills by enrolling in the most recognized and respected mobile electronics school in our industry.

Log onto www.installerinstitute.com or call

800-354-6782 for more information and take steps toward a better tomorrow.



Metra Recommends MECP certified technicians

Federal Communications Commission (FCC) Statement. This device complies with part 15 of the FCC Rules. Operation is subject to the following two conditions:

- (1) This device may not cause harmful interference, and
- (2) this device must accept any interference received, including interference that may cause undesired operation.

Note: This equipment has been tested and found to comply with the limits for a Class B digital device, pursuant to part 15 of the FCC Rules. These limits are designed to provide Reasonable protection against harmful interference in a residential installation. This equipment generates, uses and can radiate radio frequency energy and, if not installed and used in accordance with the instructions, may cause harmful interference to radio communications. However, there is no guarantee that interference will not occur in a particular installation. If this equipment does cause harmful interference to radio or television reception, which can be determined by turning the equipment off and on, the user is encouraged to try to correct the interference by one or more of the following measures:

- Reorient or relocate the receiving antenna.
- Increase the separation between the equipment and receiver.
- Connect the equipment into an outlet on a circuit different from that to which the receiver is connected.
- Consult the dealer or an experienced radio/TV technician for help.

Warning: Changes or modifications made to this device not expressly approved by **Metra Electronics** may void the FCC authorization to operate this device. Note: The manufacturer is not responsible for any radio or TV interference caused by unauthorized modifications to this equipment. Such modifications could void the user's authority to operate the equipment.

RF exposure statement:

This device complies with FCC RF radiation exposure limits set forth for an uncontrolled environment. The device is installed and operated without restriction.





[Metra Electronics JP-708RGBKT Low Voltage Chasing RGB Controller](#) [pdf] Installation Guide
HE-CHASELV-CB, HECHASELVCB, 2AHL8HE-CHASELV-CB, 2AHL8HECHASELVCB, JP-708RGBKT Low Voltage Chasing RGB Controller, JP-708RGBKT, Low Voltage Chasing RGB Controller