

METER BOOST MB48LI82.GW MtB Gate Way



METER BOOST MB48LI82.GW MtB Gate Way User Guide

[Home](#) » [METER BOOST](#) » METER BOOST MB48LI82.GW MtB Gate Way User Guide 

Contents

- [1 METER BOOST MB48LI82.GW MtB Gate Way](#)
- [2 Specifications](#)
- [3 Product Usage Instructions](#)
- [4 FAQ](#)
- [5 CONTACT](#)
- [6 Documents / Resources](#)
 - [6.1 References](#)

METERBOOST
BATTERY FOR LIFE

METER BOOST MB48LI82.GW MtB Gate Way



Specifications

- **Model:** MB48LI82.GW, MB48LI50.GW
- **Compatibility:** Inverters from Victron Energy, Deye, Solis
- **Battery Type:** Lithium-ion
- **Capacity:** Varies based on model
- **Color Indicators:** LED1 (Yellow to Green), LED2 (Magenta)

Product Usage Instructions

Pre-charge the Inverter Capacitors

- Based on your inverter type, follow Procedure A or Procedure B as described in the manual.

Procedure A

1. Wake up and turn ON one battery by pressing the red switch.
2. Observe LED1 turning yellow to green.

Procedure B

1. Supply power to the DC bus bar using MPPT or inverters.
2. Observe LED1 turning yellow to green.

Pair Batteries with the MtB GateWay

- Connect to the MtB GateWay via Wi-Fi or scan a QR code to pair batteries.

Turn ON the Rest of the Batteries

- Ensure all batteries have LED2 blinking magenta before turning them ON using the red switch.

Finishing the Batteries Installation

- If Procedure A is followed, the installation is complete. If Procedure B was followed, restore MPPT settings if changed.

Follow Inverter-Specific Instructions

- Refer to your inverter's manual for further setup and usage instructions.

FAQ

- **Q:** How do I know if a battery is paired with the MtB GateWay?
- **A:** When a battery is paired, LED2 will display a slow-blinking magenta light.
- **Q:** Can I use any Lithium-ion battery with this product?
- **A:** The product is designed to work with specific models mentioned in the manual for compatibility.

Quick Start Guide Inverter compatibility list

Victron Energy	All inverters compatible with a GX device
Deye	All single and three-phase LV Hybrid inverters
Solis	RHI-(3-6)K-48ES-5G
	S5-EH1P(3-6)K-L

Pre-charge the inverter capacitors

Based on your inverter, check the following table to determine which procedure to follow for the pre-charge.

Brand	Inverter Type	Procedure
Victron	Single-phase ≤ 5 kVA	Follow procedure A
	Single-phase >5 kVA	Follow procedure B
	Three-phase	
Deye	Single-phase	Follow procedure A
	Three-phase	
Solis	Single-phase	Follow procedure A

Procedure A

Start by waking up one and only one of the batteries (quickly press the red switch) and then turn it ON (one sound signal while pressing the red switch).

LED1 will turn yellow for some time and then change to green. When it becomes green, the battery is fully ON, and the MtB GateWay should also be ON (Power LED red).

Procedure B

Start by first supplying power to the DC bus bar, either with the MPPT or by starting up the inverters with the grid or the generator so that the inverters' internal capacitors are charged and the MtB GateWay should also be ON (Power LED red).

Warning: If you have a Victron system and you are using the MPPT to turn on the system then make sure to reduce the "Max charge current" to 5 A using VictronConnect before turning on any battery.

Now you can wake up one and only one of the batteries (quickly press the red switch).

Pair batteries with the MtB GateWay

Now that one battery is ON/awake (procedure A/procedure B) and the MtB GateWay is powered, it's time to pair the batteries with the MtB GateWay. Ensure that the Ethernet cable is not connected to the MtB GateWay, and connect your smartphone or computer to the Wi-Fi network whose name can be found on the MtB GateWay side sticker. Alternatively, you can scan the QR Code on the MtB GateWay. Go to the MtB gateway web page at <http://192.168.33.1> and enable the pairing.

Once the pairing is enabled, starting with the battery that is already ON/awake (procedure A/procedure B), press and hold the red switch until two sound signals are emitted. LED2 should become fixed magenta then fast blinking magenta, and finally slow blinking magenta. This battery is now paired with the MtB GateWay.

Now wake up the rest of the batteries (quick press the red switch) and then press and hold the red switch until two sound signals are emitted on each of the remaining batteries.

Turn ON the rest of the batteries

When all batteries have LED2 slowly blinking magenta, press the red switch on the batteries that are not yet ON until one sound signal is emitted to turn them ON.

Finishing the battery installation

If you followed procedure A, the process is now finished.

If procedure B was followed, and if you have changed the "Max charge current" for the MPPT in step 1 restore the default value using VictronConnect, this process is now finished.

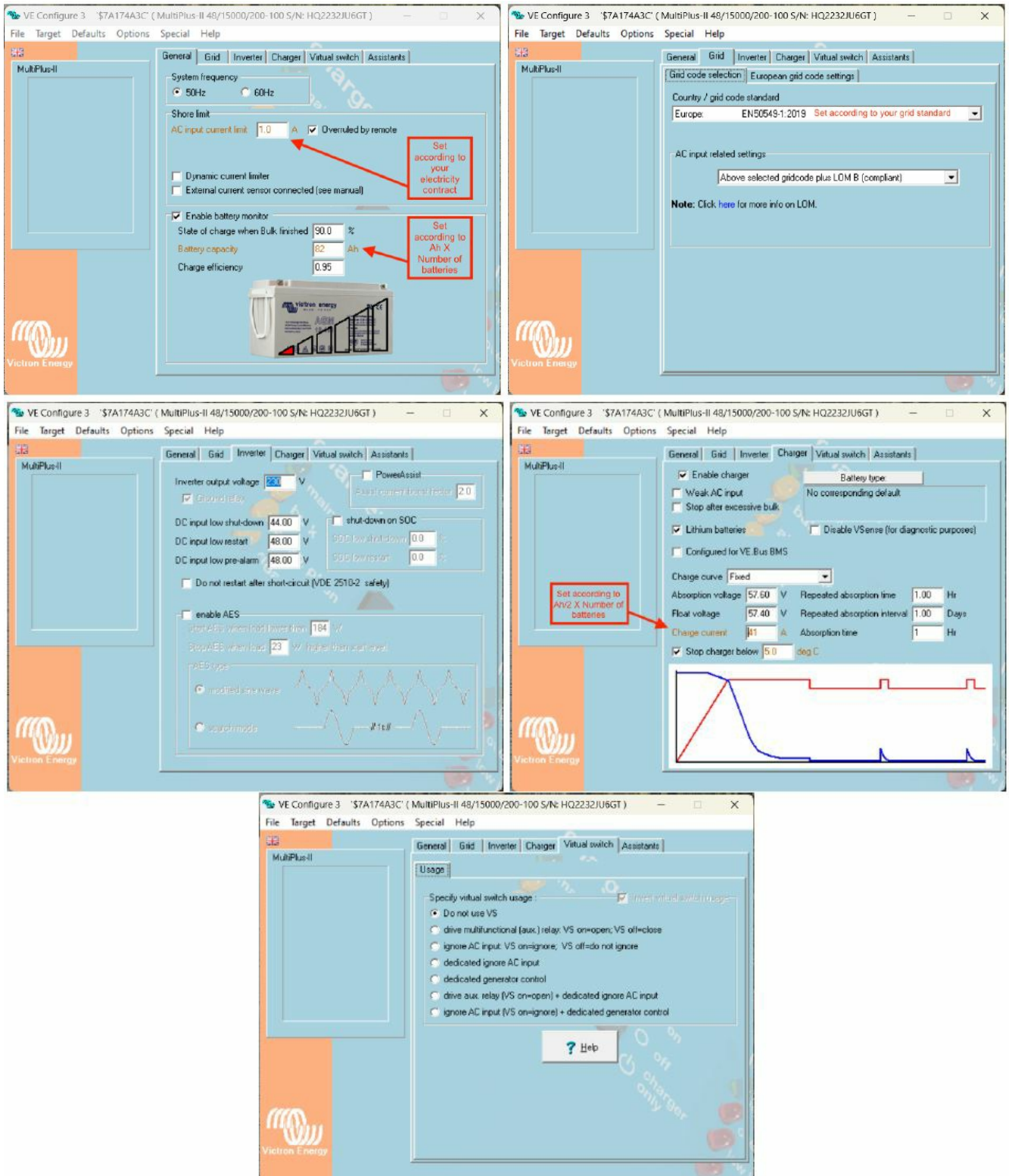
Now follow the instructions specific to your inverter

Note: Venus OS 2.94 or newer must be used

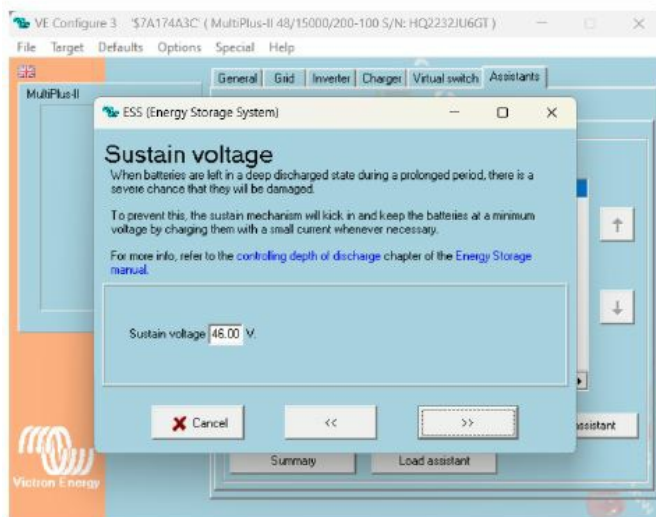
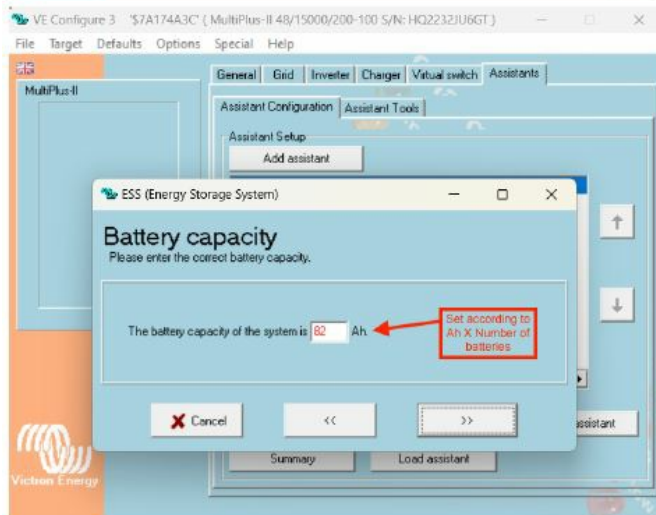
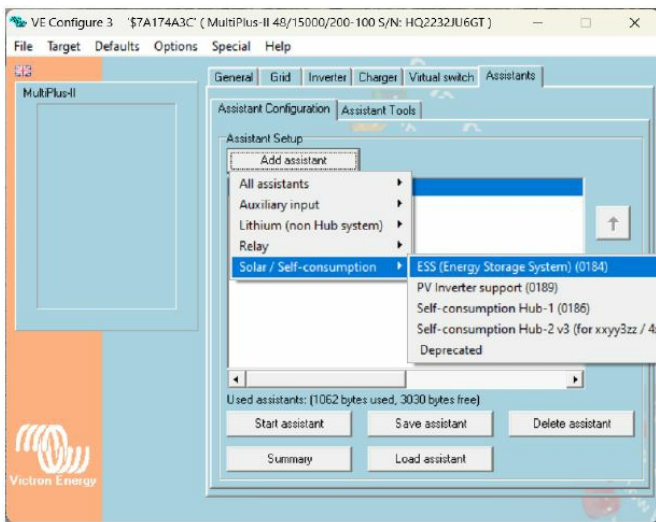
1. To connect the MtB GateWay to a Victron system, a Victron VE. Canto CAN-bus BMS cable should be used. Both type A and type B can be used. Please do not use handmade cables, both MeterBoost and Victron don't support installations with handmade cables.
2. The CAN port of the MtB GateWay should be connected to the Battery side of the cable and the Victron VE. The can side should be connected to the VE. Can port of the GX device. A CAN terminator must be used on the leftover port of the GX device. The MtB GateWay already includes a CAN terminator on its CAN port.
3. On the GX device go to Setting→DVCC and make sure DVCC and Shared Voltage Sense are ON while all the other options are OFF.
4. On the GX device go to Settings→Services→VE. Can port and change the CAN-bus profile to CAN-bus BMS (500 kbit/s).
5. If you have an ESS system, on the GX device go to Settings→ESS and change the mode to either Optimized

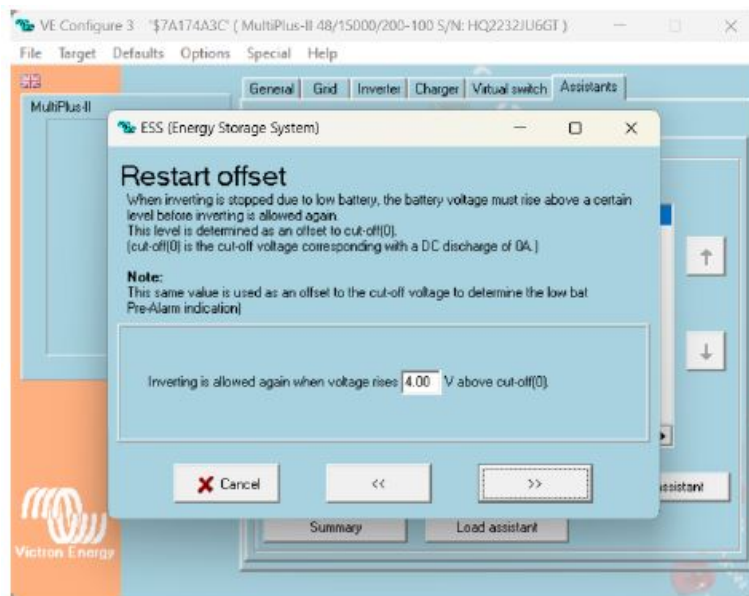
(without BatteryLife) or Optimized (with BatteryLife)

- On the GX device go to Settings→System Setup and make sure that the Battery monitor is either configured as automatic or MeterBoost on CAN-Bus.
- After this, you should see a new device listed in the main GX device menu named MeterBoost.
- Using VEConfigure, set the parameters presented in the figures below.



- In the case of the ESS system, configure also the following parameters.





10. If Solar Chargers are on the system, set the following parameters using Victron Connect. The charge current should be set to the lowest value between $Ah/2 \times \text{number of batteries}$ or the maximum solar charger current.

Battery voltage	48V
Max charge current	100A
Charger enabled	<input checked="" type="checkbox"/>
Battery preset	User defined ▼
Remote Mode	Remote on/off ▼
Expert mode	<input type="checkbox"/>
BMS controlled	Yes >

Charge voltages	
Absorption voltage	57.70V
Float voltage	57.50V
Equalization voltage	55.00V
Equalization	
Automatic equalization	Disabled
Manual equalization	START NOW
Voltage compensation	
Temperature compensation	Disabled
Battery limits	
Low temperature cut-off	5°C

Note: HMI version 1001-C037 for three-phase and C3FA for single-phase inverters must be used

1. The first step is to click on the gear in the top right corner of the display from the main screen and then click on Device Info. As shown in the image below, make sure that the HMI version matches the requirement above.

Device Info

SUN-12K
Inverter ID: 2208197944
Flash

HMI: Ver 1001-C037
MAIN: Ver 2005-1116-1807

Alarms Code	Occurred
F31 AC_SlaveContactor_Fault	2023-05-03 11:35
F56 DC_VoltLow_Fault	2023-04-28 03:19
W31 Battery_comm_warn	2023-04-21 17:47
W31 Battery_comm_warn	2023-04-21 17:20
W31 Battery_comm_warn	2023-04-21 17:15
W31 Battery_comm_warn	2023-04-21 15:44
W31 Battery_comm_warn	2023-04-14 09:16
W31 Battery_comm_warn	2023-04-13 17:47

Device
Info.

If your inverter does not respect the conditions mentioned above, please contact MeterBoost for support.

2. Connect the GateWay's CAN port to the inverter's BMS port using the yellow Ethernet cable provided with the inverter.
3. The next step is to click on the gear on the top right corner of the display from the main screen and then click on Battery Setting. The parameters should be set as shown in the images below. The Batt Capacity, Max A Charge and Max A Discharge parameters should be multiplied by the number of batteries in the installation.

Battery Setting

Batt Mode

☐ Lithium
☒ Use Batt V
☐ Use Batt %
☐ No Batt

Batt Capacity: 82Ah
 Max A Charge: 43A
 Max A Discharge: 43A

☐ Activate Battery

↑ Batt set1
 ↓
 ✕
 ✓

Battery Setting

Start: 10% 10%
 A: 10A 10A

☒ Gen charge ☒ Grid charge
☐ Gen Signal ☐ Grid Signal

Gen Max Run Time: 24.0 hours
 Gen Down Time: 0.0 hours

↑ Batt set2
 ↓
 ✕
 ✓

Battery Setting

Lithium Mode: 00
 Shutdown: 10%
 Low Batt: 12%
 Restart: 30%

↑ Batt set3
 ↓
 ✕
 ✓

4. The following step is from the main screen to click on the gear located in the top right corner of the display and then click on SystemWork Mode. The parameters should be set as shown in the images below.

System Work Mode

☒ Time Of Use

Grid charge	Gen	Time	power	Batt
<input type="checkbox"/>	<input type="checkbox"/>	01:00 05:00	12000	12%
<input type="checkbox"/>	<input type="checkbox"/>	05:00 09:00	12000	12%
<input type="checkbox"/>	<input type="checkbox"/>	09:00 13:00	12000	12%
<input type="checkbox"/>	<input type="checkbox"/>	13:00 17:00	12000	12%
<input type="checkbox"/>	<input type="checkbox"/>	17:00 21:00	12000	12%
<input type="checkbox"/>	<input type="checkbox"/>	21:00 01:00	12000	12%

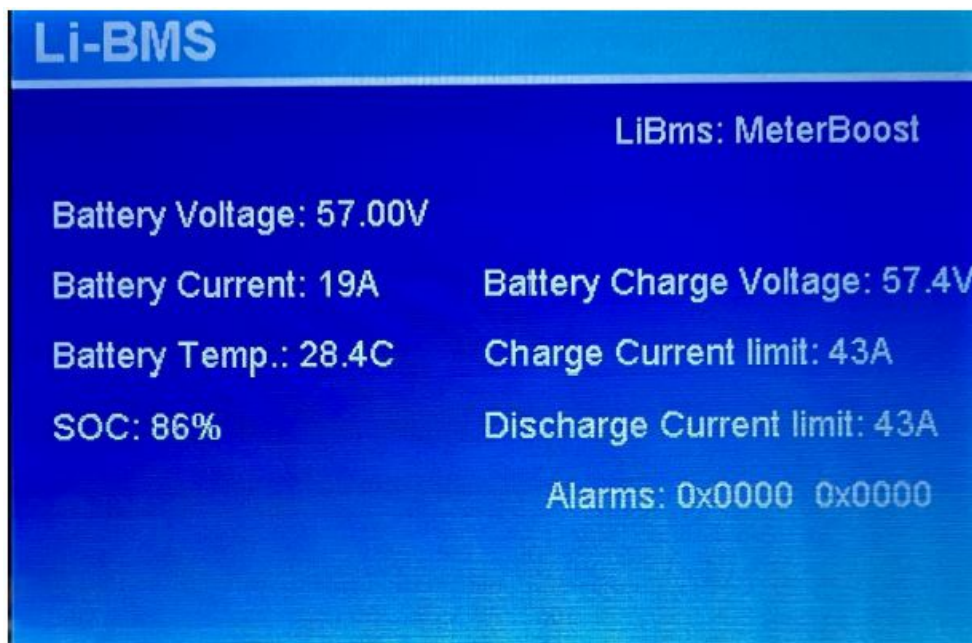
↑ Work Mode2
 ↓
 ✕
 ✓

System Work Mode

Mon ☒ Tue ☒ Wed ☒ Thu ☒ Fri ☒ Sat ☒ Sun ☒

↑ Work Mode4
 ↓
 ✕
 ✓

5. The final step is to click on Battery Icon from the main screen and then click on Li-BMS in the bottom right corner. Make sure that after the LiBms field appears MeterBoost.



CONTACT

MeterBoost, Lda

- Núcleo Empresarial da Venda do Pinheiro II – Letra D e E, 2665-608 Mafra, Portugal
- Web: www.meterboost.com E-Mail: info@meterboost.com Phone: (+351) 261 060 001

Documents / Resources



[METER BOOST MB48LI82.GW MtB Gate Way](#) [pdf] User Guide
MB48LI82.GW MtB Gate Way, MB48LI82.GW, MtB Gate Way, Gate Way, Way

References

-  [MeterBoost - Baterias de LÃtio](#)
- [User Manual](#)

[Manuals+](#), [Privacy Policy](#)

This website is an independent publication and is neither affiliated with nor endorsed by any of the trademark owners. The "Bluetooth®" word mark and logos are registered trademarks owned by Bluetooth SIG, Inc. The "Wi-Fi®" word mark and logos are registered trademarks owned by the Wi-Fi Alliance. Any use of these marks on this website does not imply any affiliation with or endorsement.