



METCAL CV-5200 Connection Validation Instruction Manual

[Home](#) » [METCAL](#) » METCAL CV-5200 Connection Validation Instruction Manual 

METCAL CV-5200 Connection Validation
Instruction Manual

Connection Validation (CV)TM
Firmware Update Loading Instructions



DETAILED CV-5200 FIRMWARE UPDATE LOADING INSTRUCTIONS

SECTION 1: DOWNLOAD FILES, INSTALL APPLICATION

STEP 1: DOWNLOAD PROGRAMMING FILES AND UPDATE HEXFILE

DOWNLOAD 3 ITEMS:

1. AN1388 Source Code (application program) FILENAME: [FIRMWARE-AN1388-Source-Code-2014_02_14.zip](#)
2. CV-5200 Firmware FILENAME: [CV5200rX_XX_XX.zip](#)*

*The exact file name depends on the latest version of the firmware.

NOTE: If using Windows 7, 8, or 10 with older hardware, you may need to install [FTDI VCP Drivers](#) appropriate for the specific Windows version. FTDI chipset is used for communication from CV system to computer via USB-to-USB port connection. Please contact support@okininternational.com for further information if needed.

NOTE: DO NOT download CV-500 firmware; it is not compatible with CV-5200.

NOTE: Windows 10 may automatically download files to the DOWNLOADS FOLDER, but the user may select a path using the 'Save as' option.

STEP 2: UNZIP FIRMWARE-AN1388-SOURCE-CODE APPLICATION FILES to self-designated and known location on your computer

Unzip file: [FIRMWARE-AN1388-Source-Code-2014_02_14.zip](#)

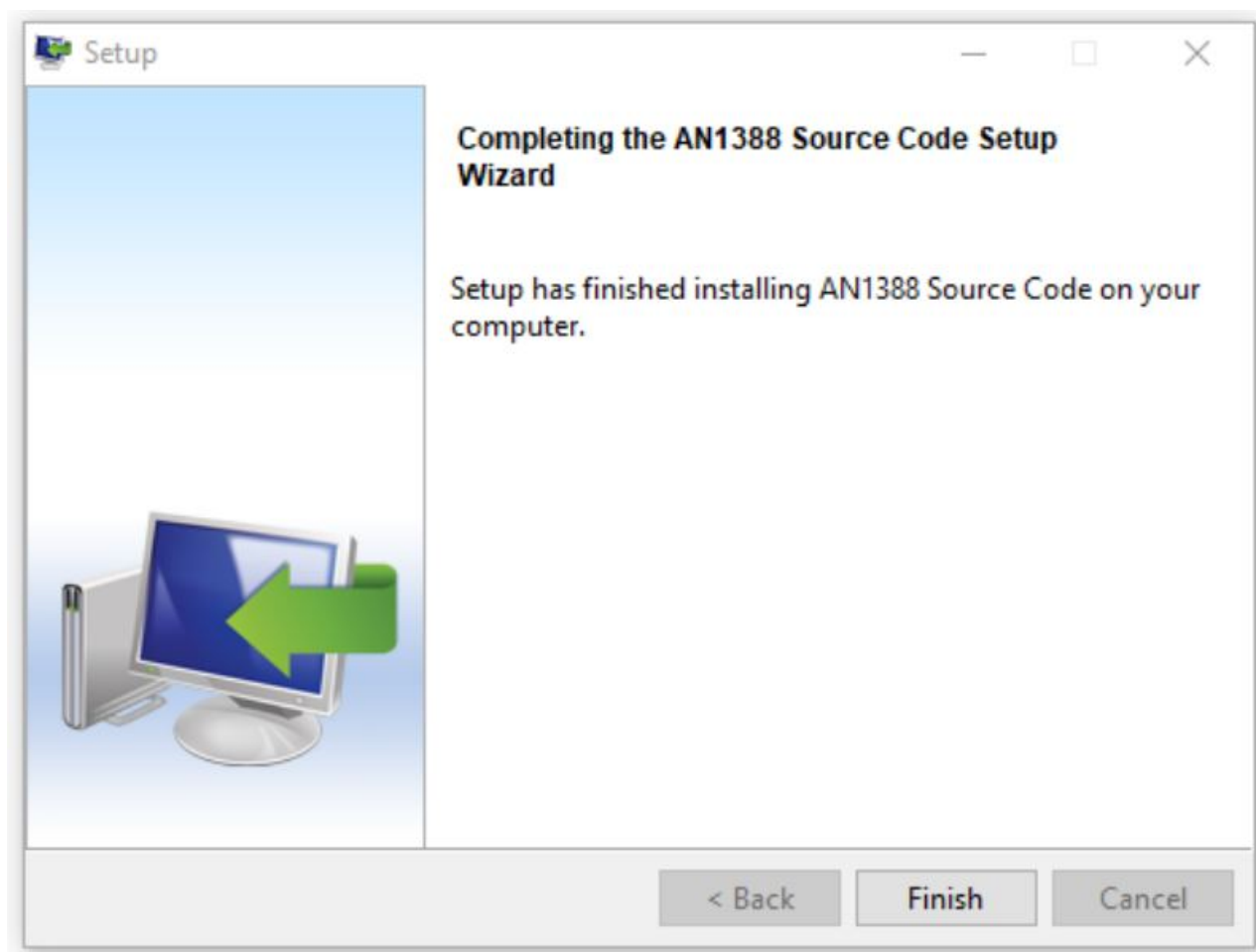
Use the Unzip menu to select a destination folder for file extraction.

You can extract the .exe file in the Downloads folder or a folder of your choice using "Unzip to selected folder."

STEP 3: RUN AN1388 Source Code 2014_02_14.exe APPLICATION TO INSTALL PIC BOOTLOADER PROGRAMMING APPLICATION

The application PIC32UBL is needed to install the new firmware on the CV unit. AN1388 Source Code 2014_02_14 installs PIC32UBL on your hard drive.

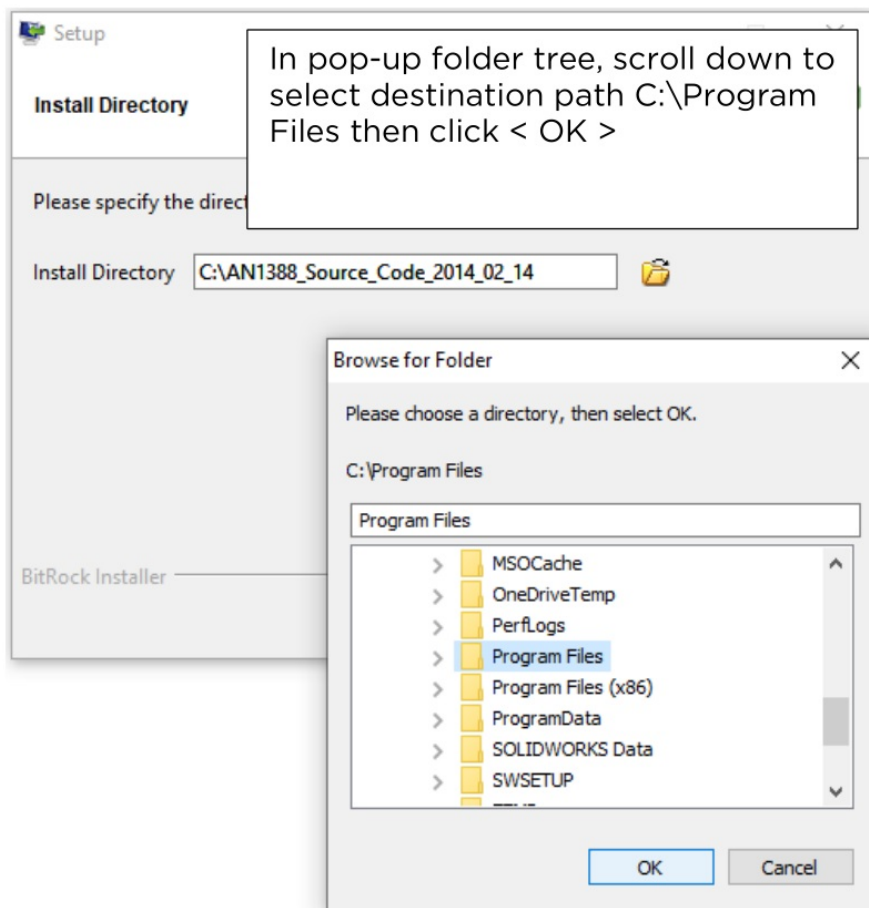
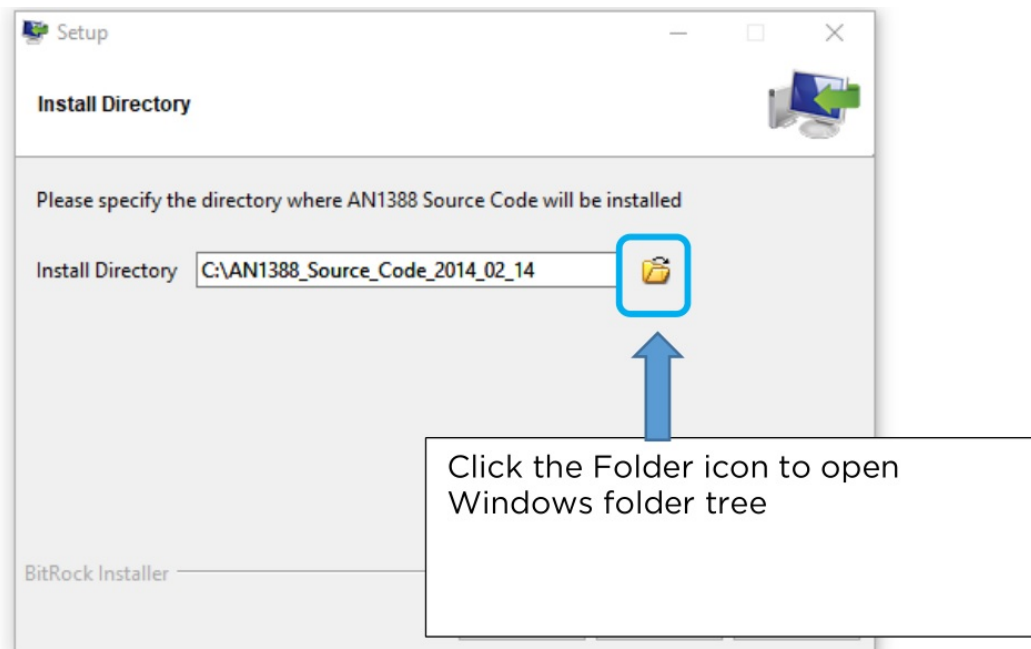
a. Run executable program file AN1388 Source Code 2014_02_14.exe. This will install the Bootloader application. At the Setup/Welcome screen, click < Next >.



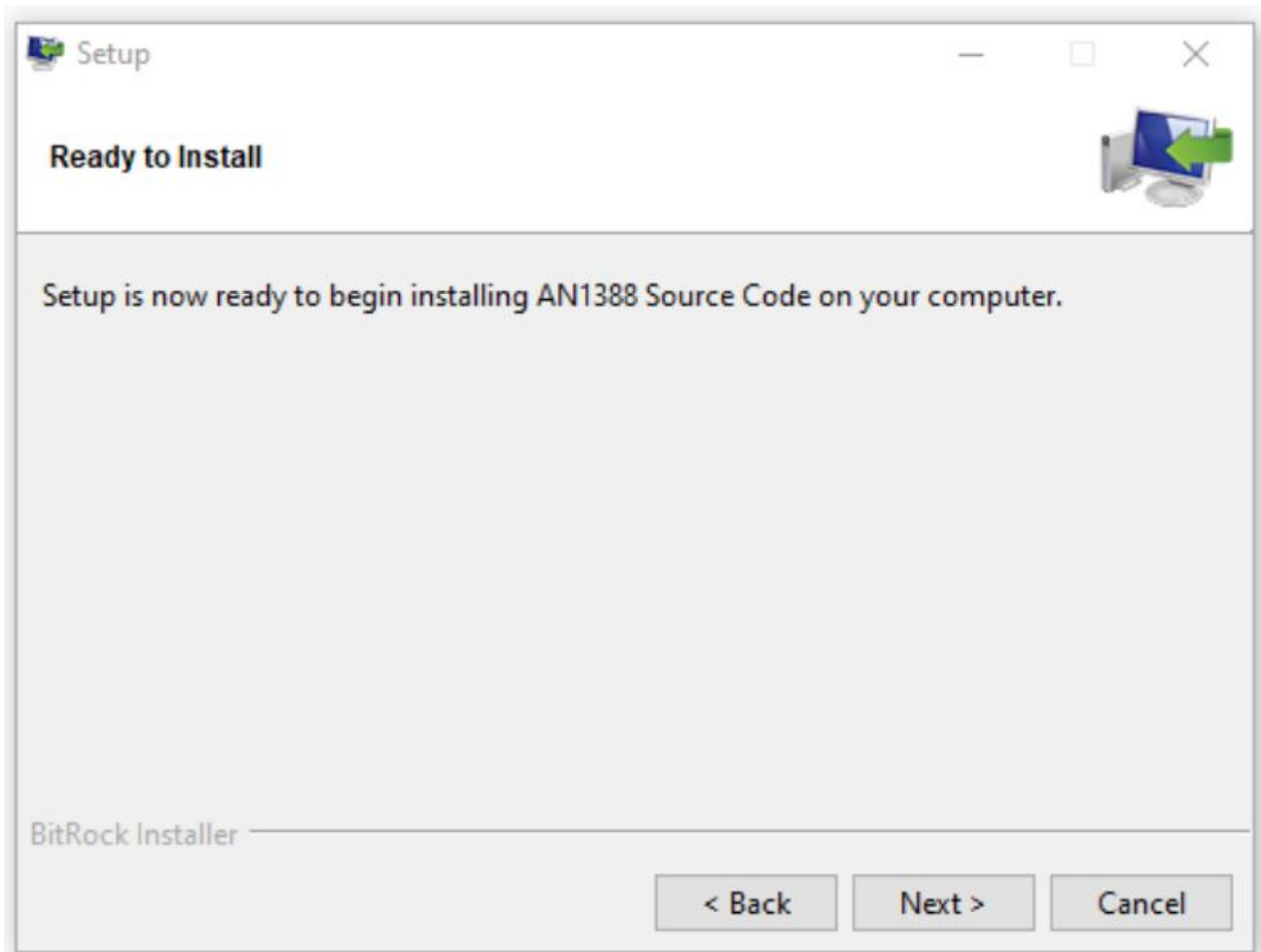
b. ACCEPT the License agreement. Click < Next >.



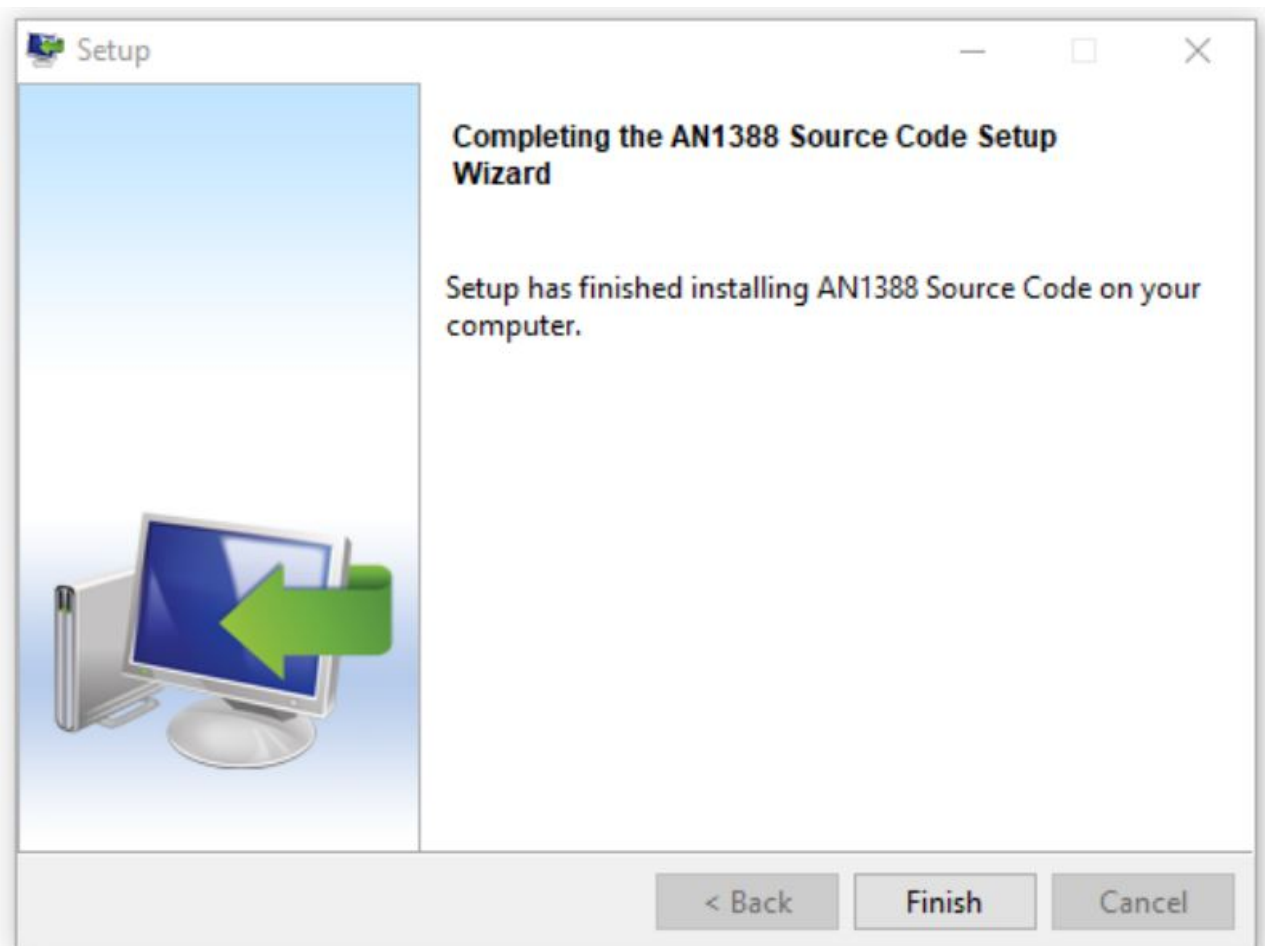
c. SELECT PATH FOR DIRECTORY INSTALLATION Select a destination folder of choice for installation.



d. Click < Next > to begin the application program installation.

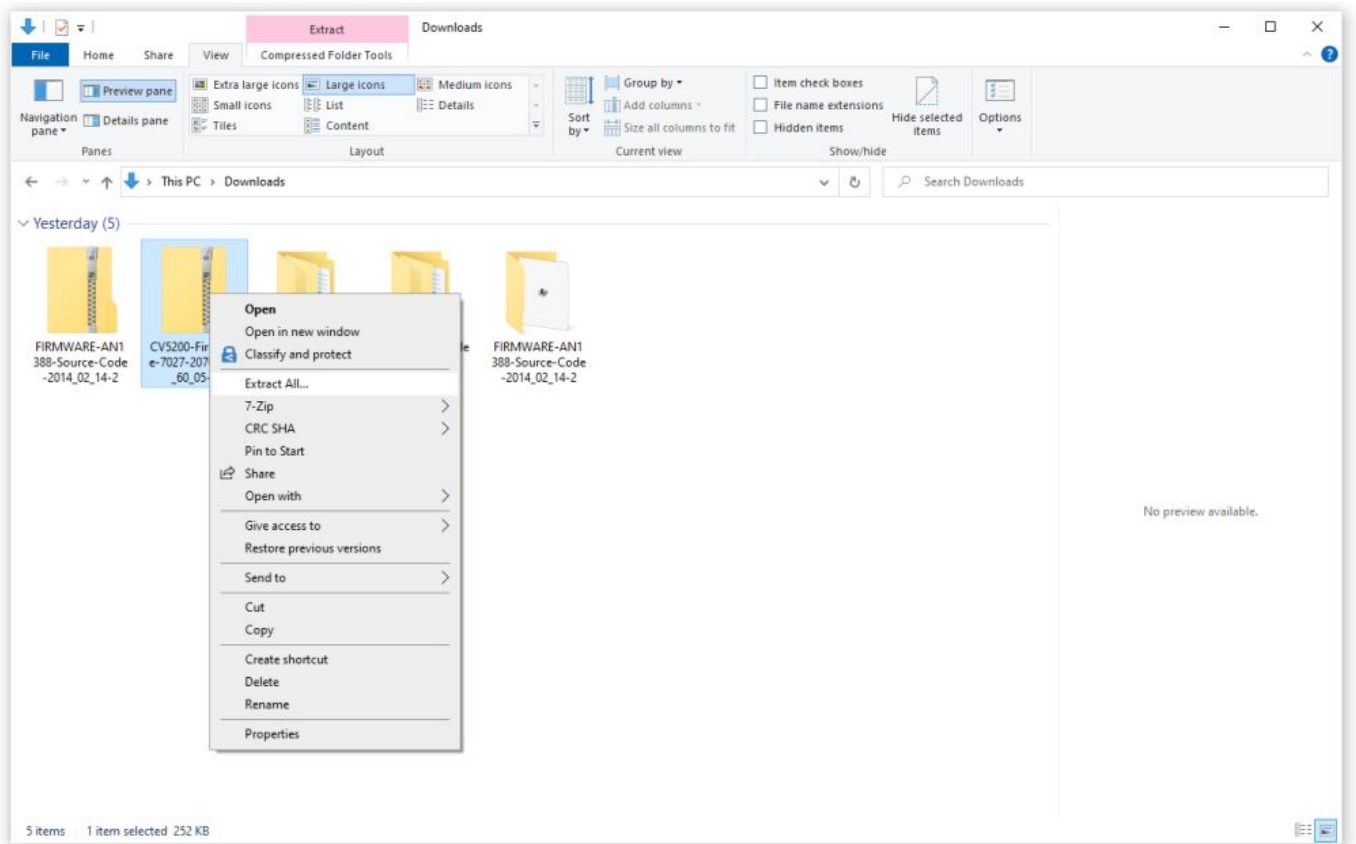


e. Wait for the application to complete installation; then click < Finish >.

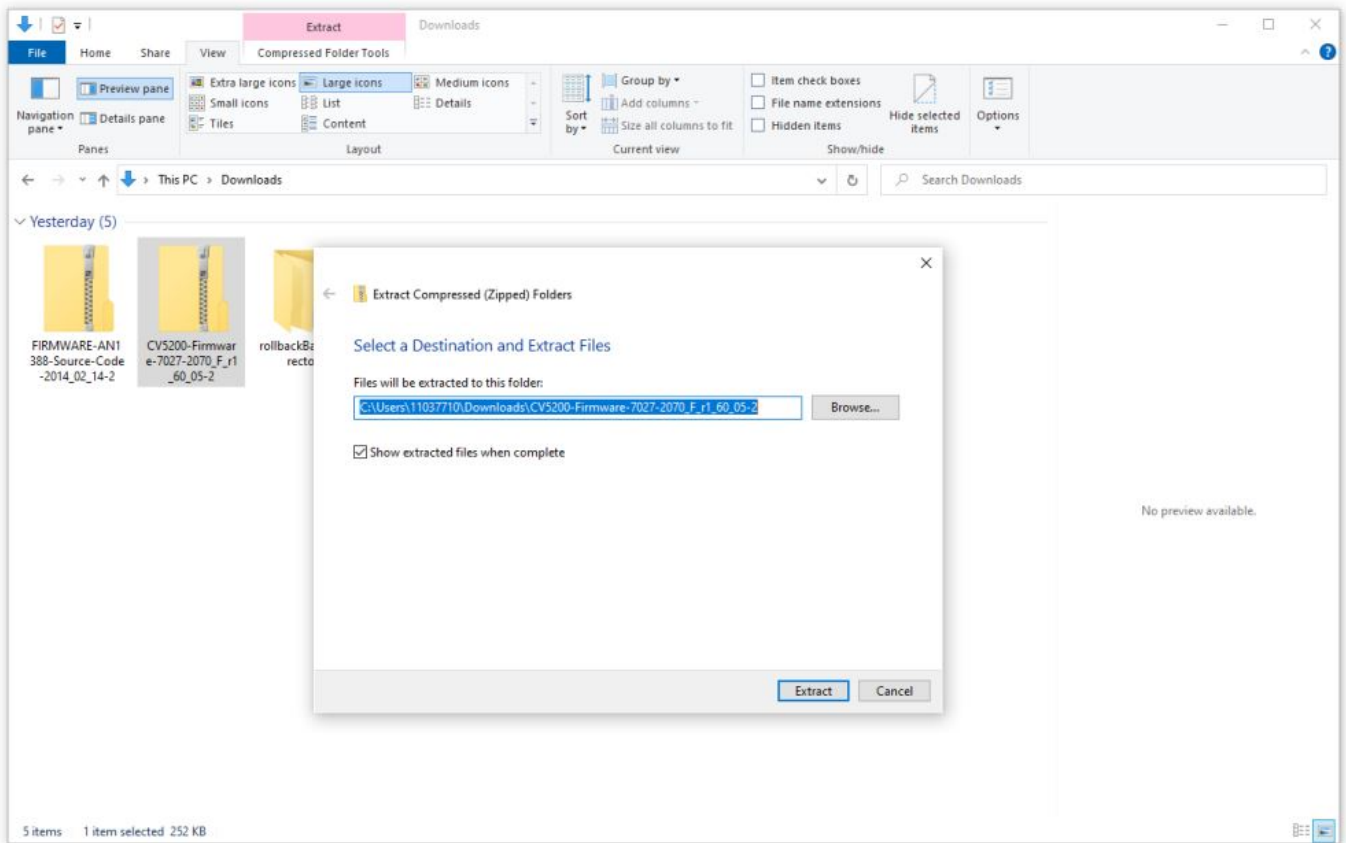


STEP 4: UNZIP CV-PS5200 FIRMWARE UPDATE FILE to self-designated and known location on your computer

Unzip the CV Firmware .zip file.



Use the Unzip menu to select a destination folder for file extract (can extract hex file in the Downloads folder or a folder of your choice using “Unzip to selected folder.”)



NOTE: It is very IMPORTANT to know the exact FOLDER LOCATION of the CV5200r1_xx.hex file as it will be selected when running the firmware update application.

STEP 5: LOCATE PIC BOOTLOADER PROGRAM executable and create desktop shortcut (Optional)

If in step 3 PIC Bootloader program installed to C:\ main root directory, go to C:\PIC32_Bootloaders\PC_Application

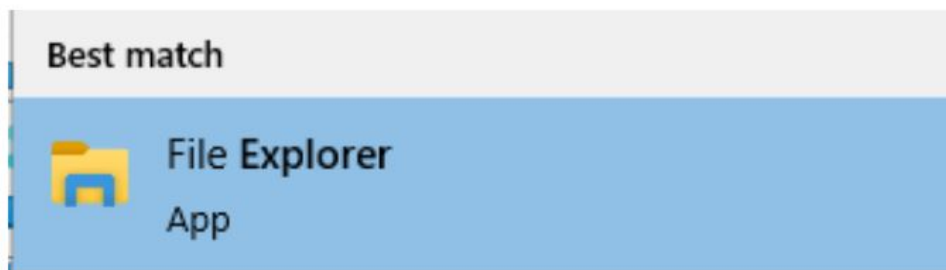
If in step 3 program installed C:\Program Files directory, go to C:\Program Files\PIC32_Bootloaders\PC_Application

Locate PIC BOOTLOADER PROGRAM executable file: PIC32UBL.exe

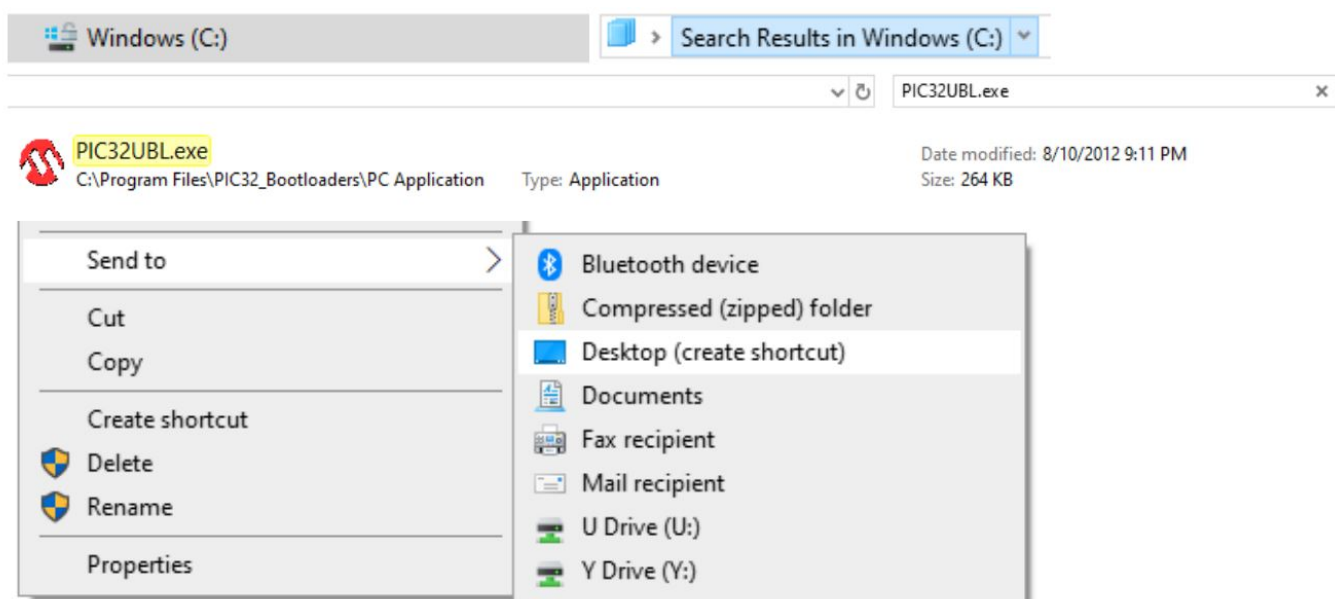
Select PIC32UBL.exe file; right-click mouse and select SEND TO > DESKTOP (Create shortcut)

To find PIC32UBL.exe using Windows Search:

Type 'explorer' in bottom Windows 10 search bar field.
From pop-up results, select and open File Explorer app.
At top left menu, check "Navigation pane."
In left 'Navigation pane' column, find and select Windows (C:) folder location.
At upper right search bar in 'Search Window (C:)' field type "PIC32UBL.exe."
Windows10: type PIC32UBL.exe in bottom left SEARCH BAR.
Once program file found, create desktop shortcut as above.



File Explorer
App



After extraction of CV5200r1_xx.hex file (firmware update file) SECTION 1 for download, unzip files and application is completed. The application will now be available on the computer for future CV firmware updates (it is not necessary to re-install AN1388 Source Code 2014_02_14.exe application for future CV firmware updates).

SECTION 2: UPDATE CV-PS5200 FIRMWARE

STEP 1: Connect a USB-to-USB cable from the CV-5200 USB port (upper right side) to a USB port on the computer



CV-PS5200 USB connection is located upper right side of the unit



Connect

STEP 2: ENABLE FIRMWARE UPDATE PROGRAMMING MODE for CV-5200

With the CV unit OFF, press and hold your finger lightly but firmly on the touchscreen, then turn the unit power ON.

When the unit goes to firmware program/update mode, the screen should be black/blank and you should hear an audible ticking sound; “tick, tick, tick” or “click, click, click,” like an old clock ticking.

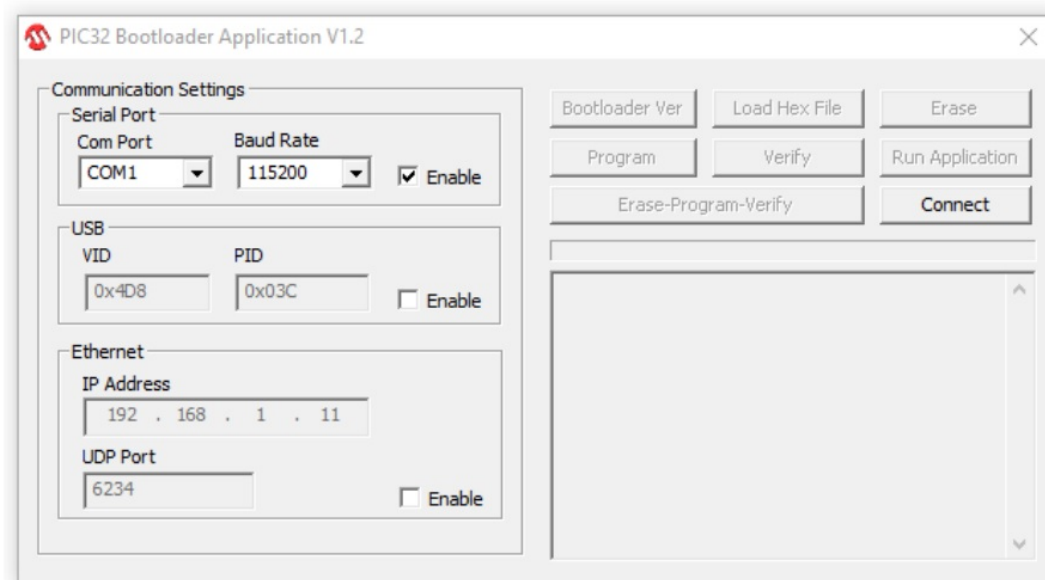


CLICK!
CLICK!
CLICK!



STEP 3: Open the PIC32UBL.exe program (PIC BOOTLOADER application)

Name	Date modified	Type	Size
PIC32UBL	9/11/2017 4:57 PM	File folder	
PIC32UBL.exe	8/10/2012 9:11 PM	Application	264 KB
Readme.txt	8/10/2012 9:11 PM	Text Document	1 KB



STEP 4: Determine the active USB SERIAL COM PORT for computer

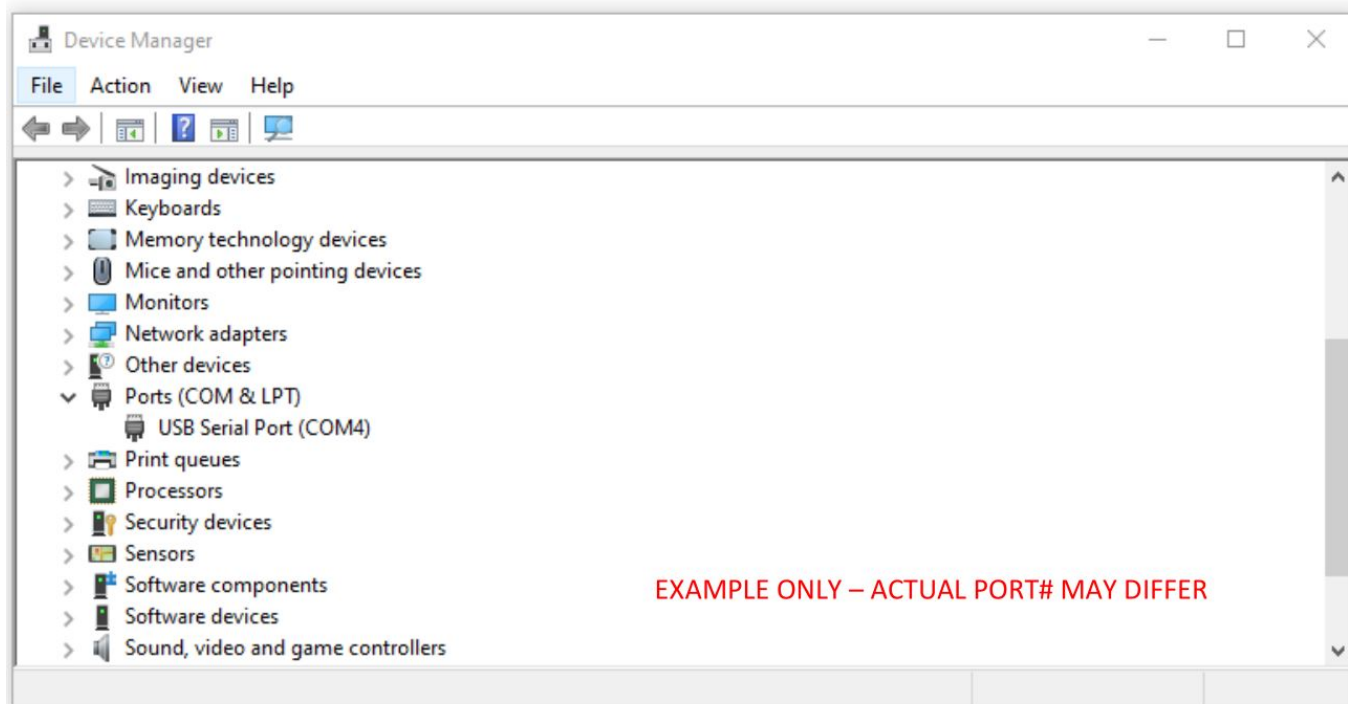
- In the Windows 10 bottom search bar field, type “device manager”
- In pop-up result, select and open Device Manager (Control panel)
- Locate Ports (COM & LPT) and expand the tree by clicking the left arrow
- Locate USB Serial Port (COM #); this number will be the active computer USB Serial Com Port #

IMPORTANT NOTE: PIC 32 Bootloader software will only connect to CV-PS5200 using com ports 1 – 9.

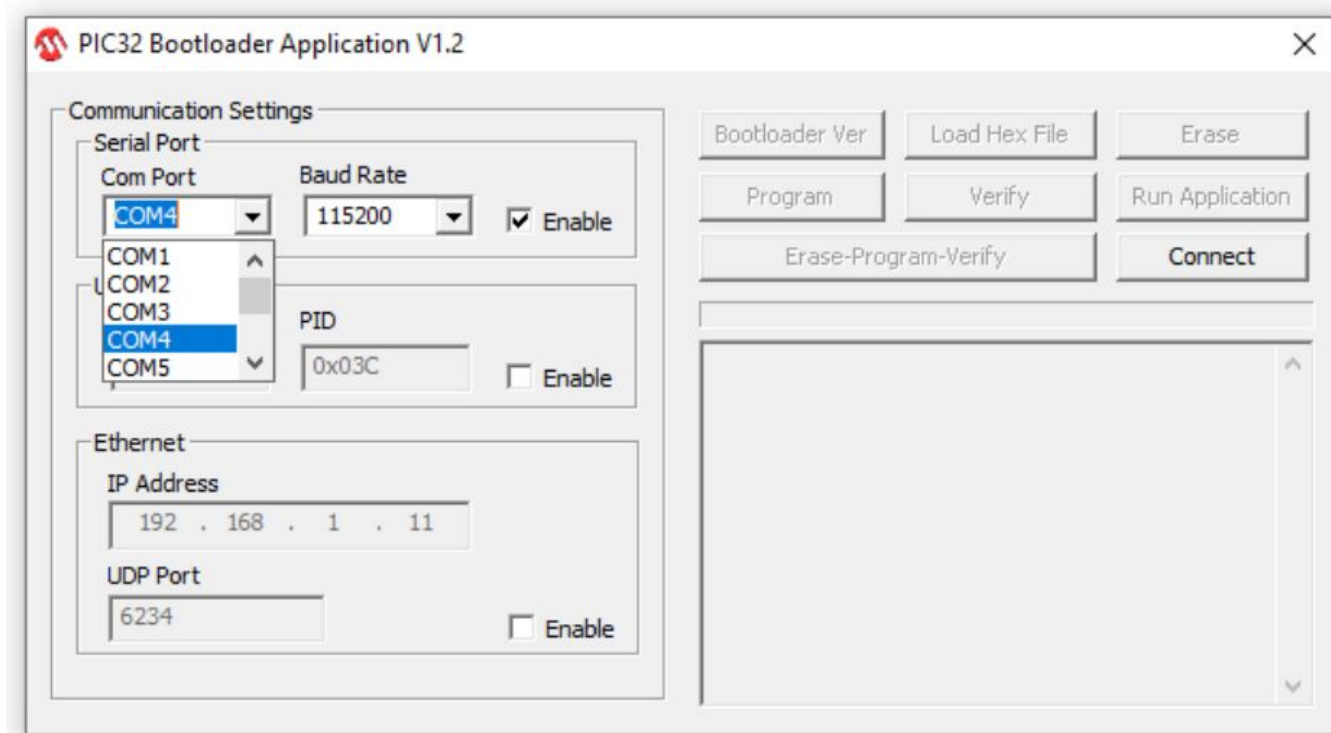


Device Manager
Control panel

If the computer active com port is > 9 (e.g. COM 11), you will need to manually reset the active com port. Please contact OK International Tech Support if assistance is needed.

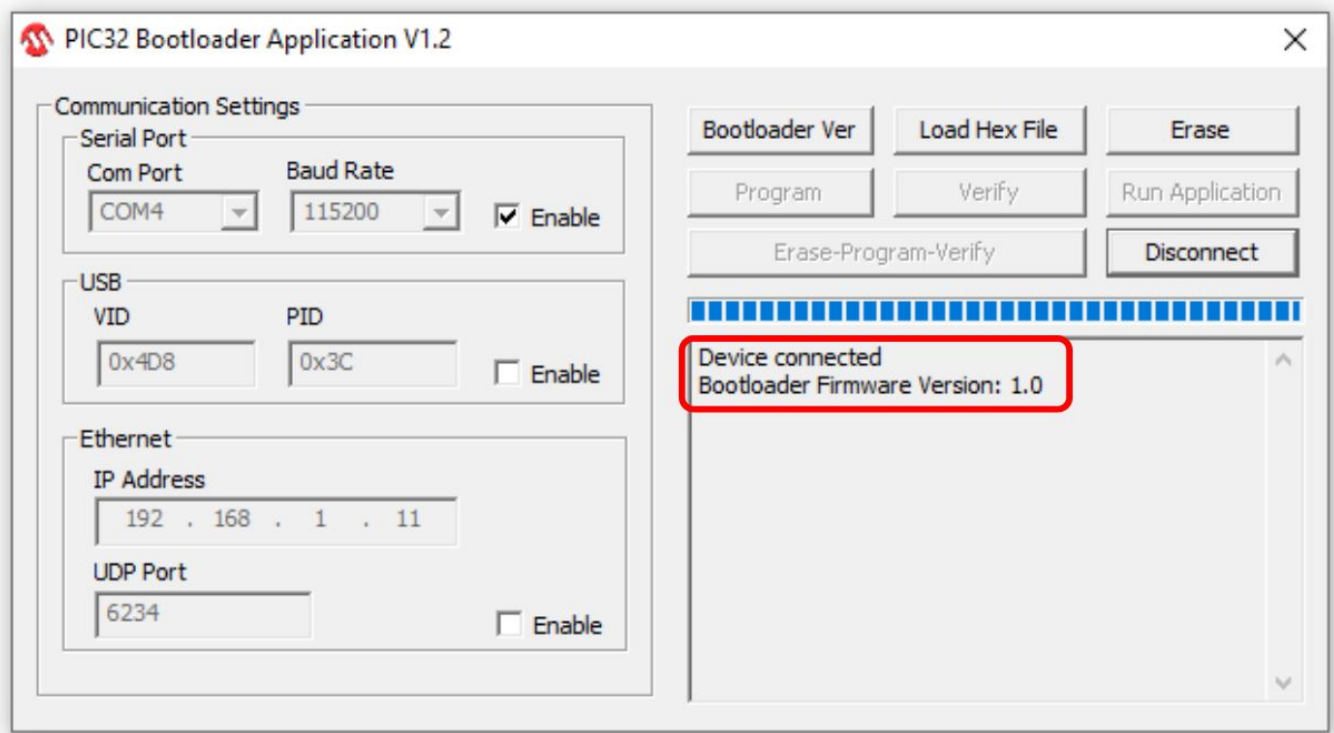


STEP 5: SELECT ACTIVE COM PORT# AND CONNECT TO CV-PS5200 USING PIC 32 Bootloader Application



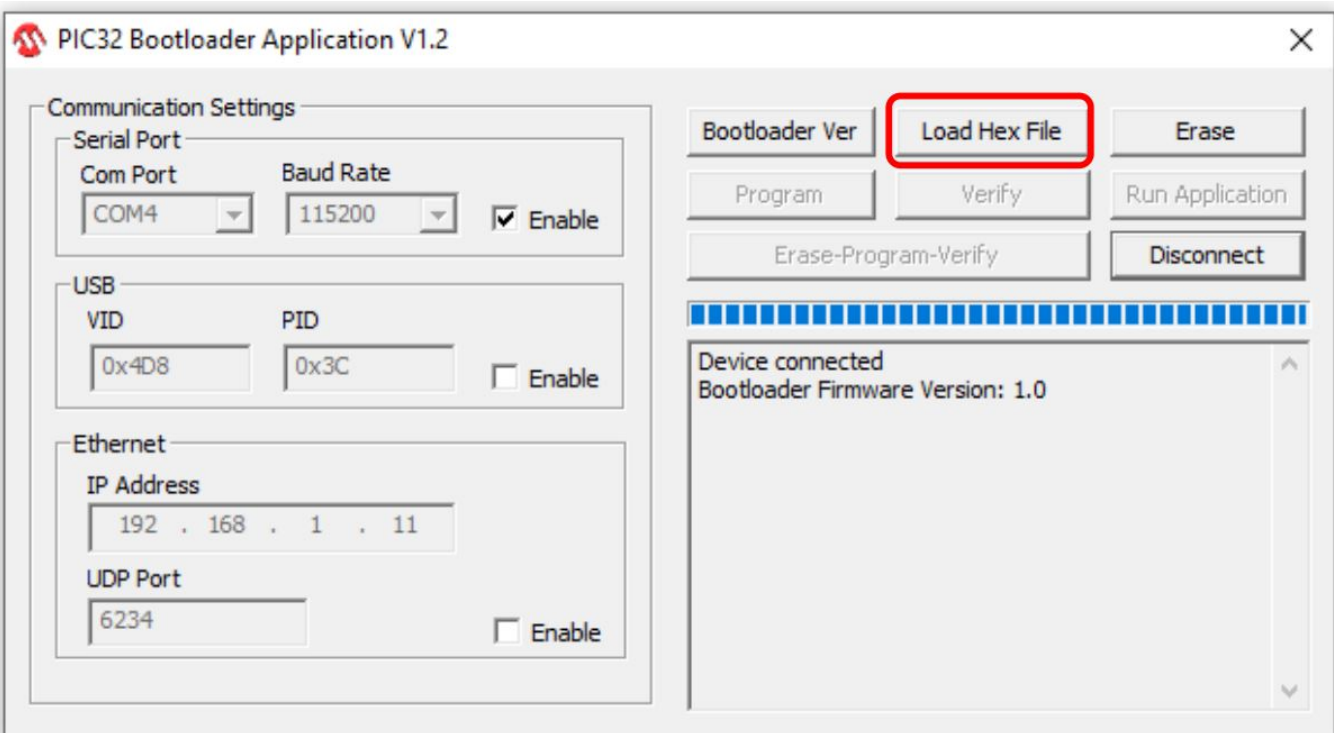
STEP 6: CONNECT TO CV-PS5200

Press the CONNECT command button on PIC BOOTLOADER command screen, “device connected” should appear to indicate a successful connection.

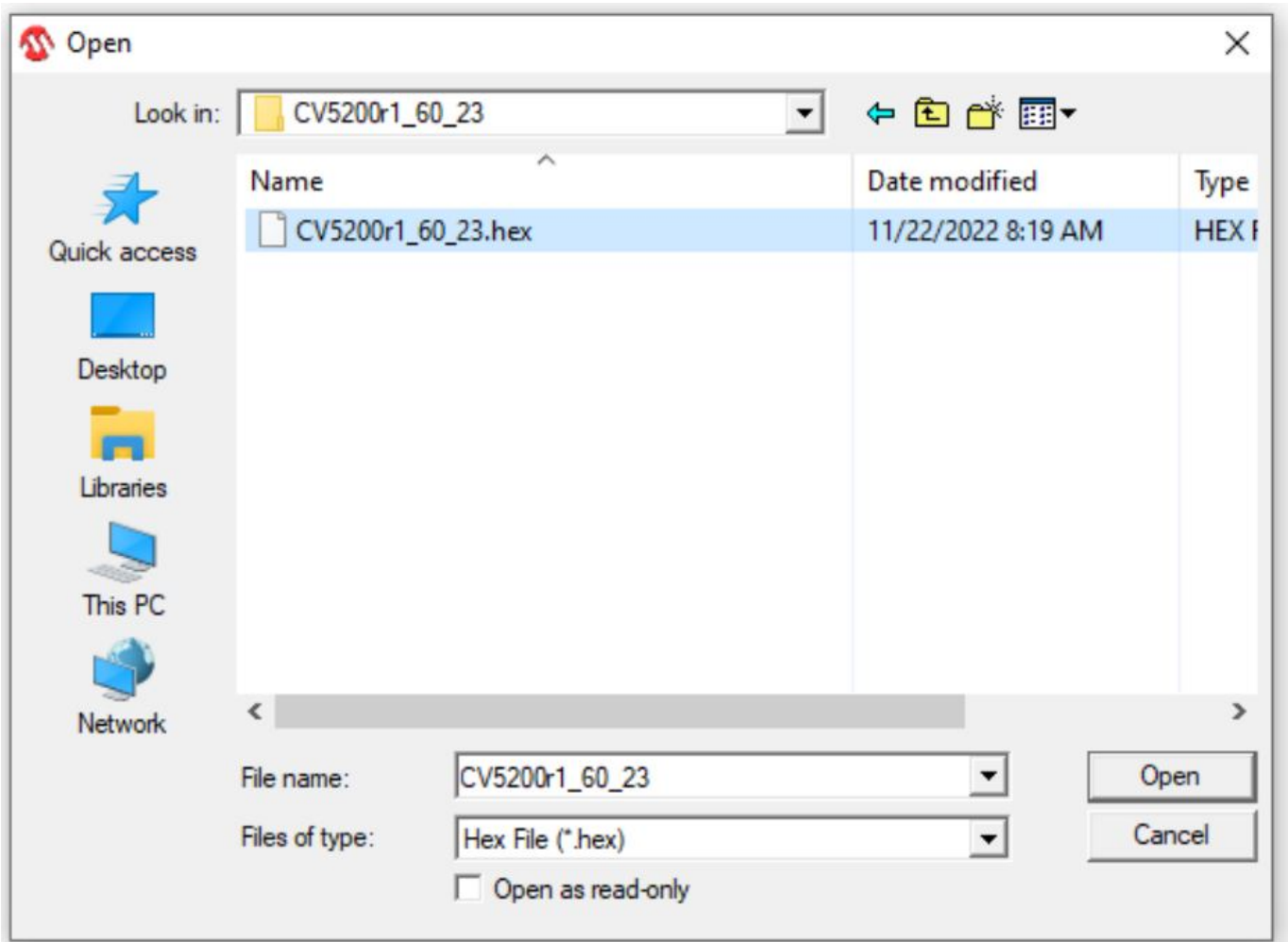


STEP 7 – LOAD HEX FILE (current version CV-P52000 firmware)

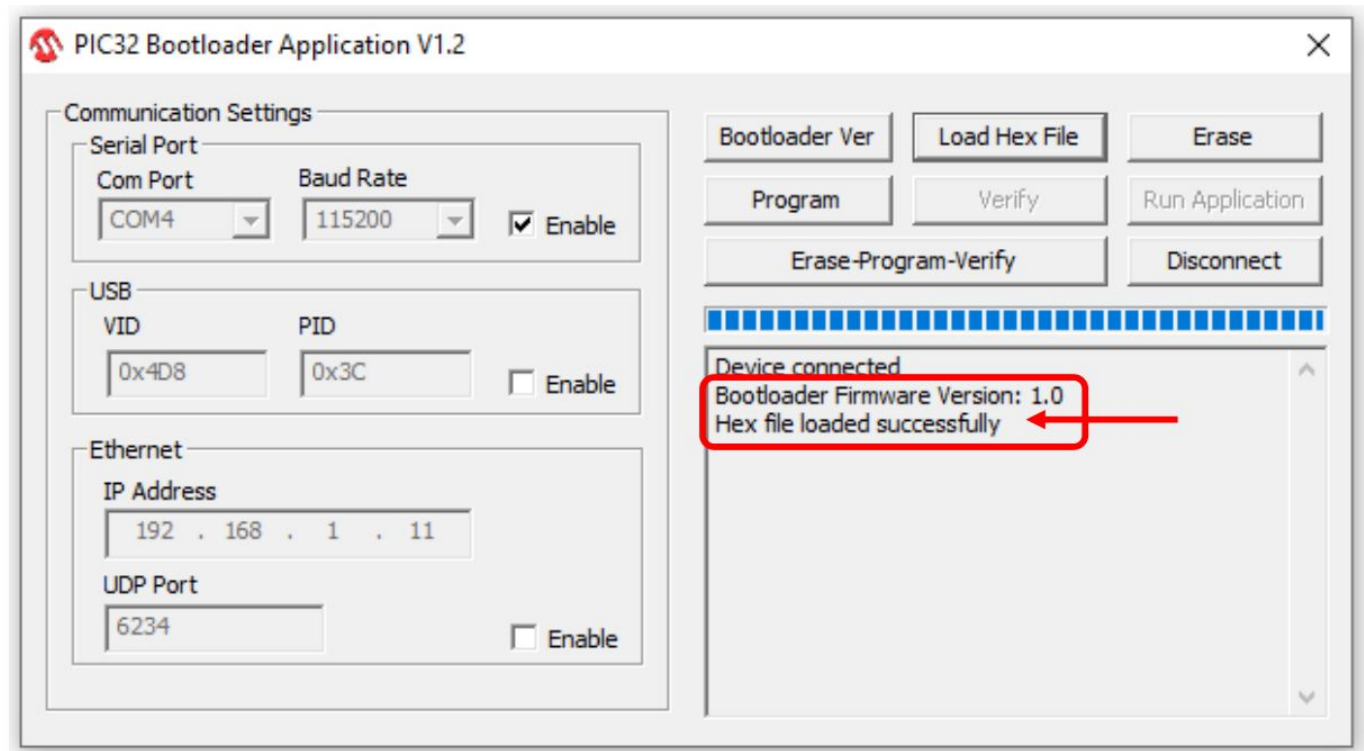
- This is CV5200r1_xx.hex file unzipped to 'known location' in Step 4
- Press LOAD HEX FILE command button on PIC BOOTLOADER command screen



- Highlight the updated hex file and click Open



d. You should see the onscreen message “Hex file loaded successfully.”

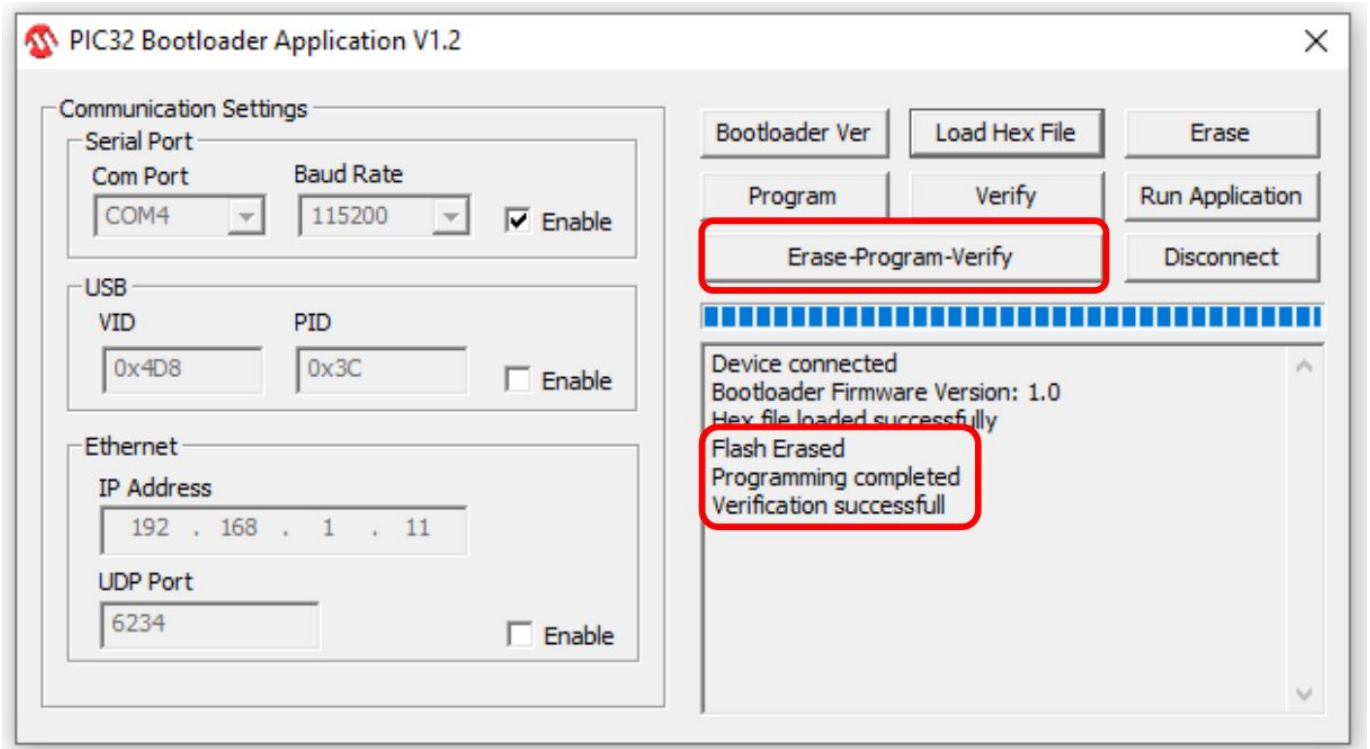


STEP 8: UPDATE CV-PS5200 FIRMWARE

a. Press the Erase-Program-Verify command button on the PIC BOOTLOADER command screen

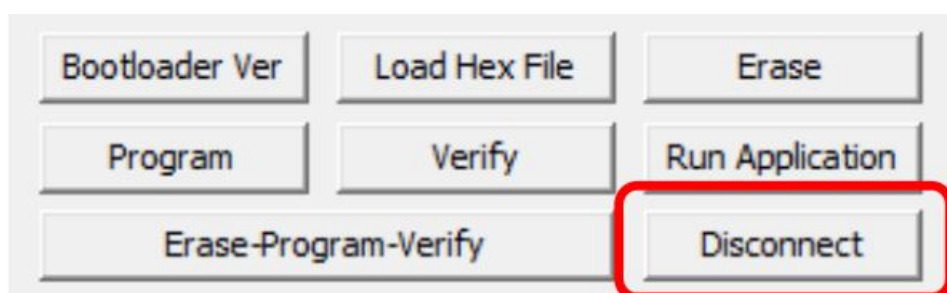
- b. The update will take a few seconds (usually less than 1 minute)
- c. Upon completion of the update, you should see the following onscreen messages:

Flash Erased
Programming completed
Verification successful



STEP 9: Press the DISCONNECT command button on PIC BOOTLOADER command screen

'Device disconnected' should appear
CLOSE PIC BOOTLOADER application)



STEP 10: CHECK FIRMWARE VERSION AND UPDATE FOR CV-P25200

POWER OFF CV-5200 power supply, wait 5 sec
POWER ON CV-5200 power supply, check firmware version on startup screen



Example only – actual versions may differ

NOTE: Some firmware version updates may require a MASTER RESET.

The indication of MASTER RESET required after firmware update will be 'lock out' from entry to Setup Mode using 4-digit password. Contact support@okinternational.com for assistance.

CONTACT:

OK INTERNATIONAL TECHNICAL SERVICE, USA
1 (714) 799-9910, ask for Tech Support
support@okinternational.com


Version 2022-11-23

metcal.com/contact-us

Contents

- 1 Documents / Resources
- 1.1 References
- 2 Related Posts

Documents / Resources

	<p>METCAL CV-5200 Connection Validation [pdf] Instruction Manual</p> <p>CV-5200 Connection Validation, CV-5200, Connection Validation, Validation</p>
---	---

References

-  [Contact Us - Metcal](#)
-  [Connection Validation™ \(CV\) CV-5200 Firmware - Metcal](#)