



MESTEK WM700A Humidity Detector Humidity Meter Humidity Sensor User Manual

[Home](#) » [MESTEK](#) » MESTEK WM700A Humidity Detector Humidity Meter Humidity Sensor User Manual 

Contents

- [1 MESTEK WM700A Humidity Detector Humidity Meter Humidity Sensor](#)
- [2 Overview, LCD Display Readings](#)
- [3 LCD Display Readings](#)
- [4 Tools Components](#)
- [5 Operation Instructions](#)
- [6 Maintenance](#)
- [7 Technical Specifications](#)
- [8 Documents / Resources](#)



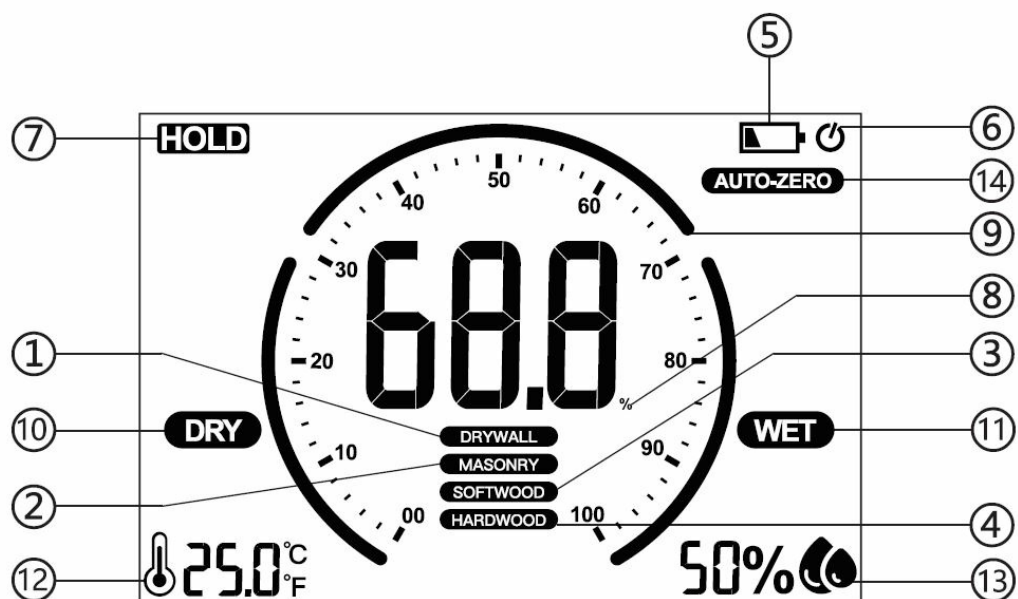
MESTEK WM700A Humidity Detector Humidity Meter Humidity Sensor








Overview, LCD Display Readings

Non-invasive inductive moisture meter mainly measures the moisture content through the sensor on the back and tests various materials by emitting and receiving high-frequency electromagnetic wave signals to and from the measured materials. This product is a colour display with simple operation and fast measuring speed, high precision and wide range. The reading displayed is an average value of the moisture content in an area, and the detection area is 40mm (length) 40 mm (width) 20 mm (height); The electromagnetic wave emitted can penetrate to a maximum depth of 20mm, so it is required that the thickness of the measured object should be greater than 20mm and the area should be greater than 40× 40 mm.

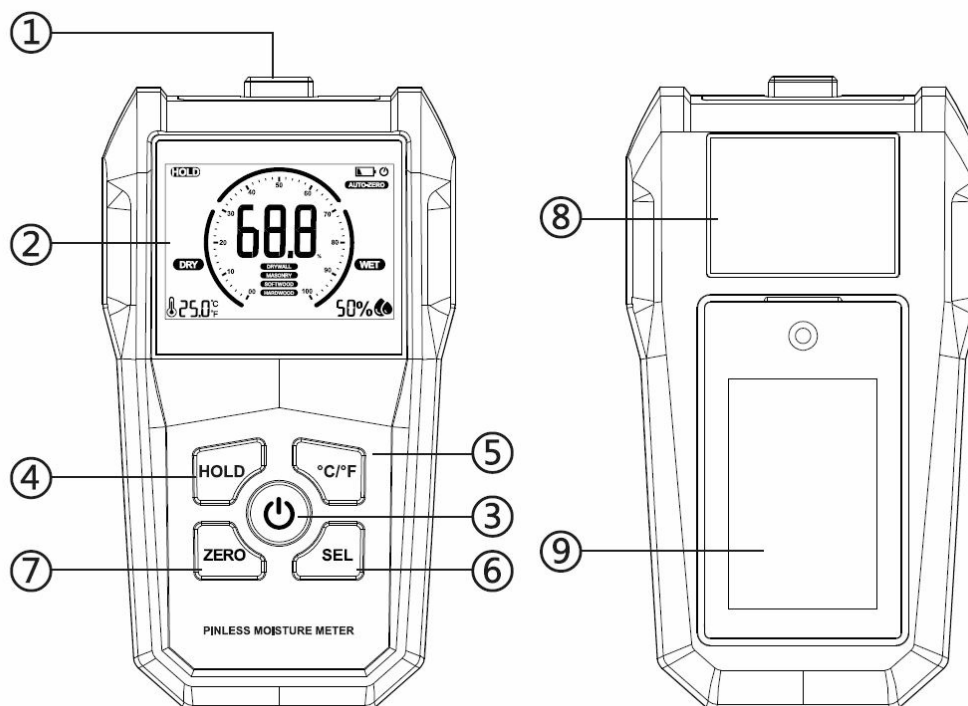
LCD Display Readings



1. DRYWALL mode
2. MASONRY mode
3. SOFTWOOD mode & HARDWOOD mode
4. Low battery 

5. Automatic shutdown symbol 
6. Hold symbol (HOLD)
7. Moisture value (%)
8. Analog display 
9. Dry (DRY)
10. Wet WET
11. Ambient temperature 
12. Ambient humidity 
13. Zeroing out
14. (AUTO-ZERO)

Tools Components



1. Temperature and humidity sensing area
2. LCD color display screen
3. Power key
4. Data hold key
5. °C/°F switch key
6. Measurement material selection key (SEL)
7. Reset key (zero)
8. Moisture test sensor
9. Battery cover

Operation Instructions

Function Introduction

1. Digital and analog dual display on LCD colour screen.
2. HOLD locks the measured value.
3. Automatic calibration.
4. Low battery indicator.
5. The meter automatically shuts down after 10 minutes without any operation.
6. Measurement of ambient temperature and humidity.
7. °C/°F switch.
8. Wet and dry warning function.
9. Test the moisture of four different materials (drywall, masonry, softwood and hardwood).
10. Alarm when the measured value is out of range.

Operation Instructions

1. Press to start the machine, and the meter will enter the measuring state.
2. Press the (SEL) key to select the measurement material.
3. When measuring, please place the meter on the flat surface of the target object, so that the measuring material can be attached to the sensor.
4. If the moisture content exceeds the measurement range, the buzzer will give an alarm.
 - A: drywall and masonry buzzer alarm when the value is > 70%
 - B: softwood and hardwood buzzer warning for when the value is >20%
 - Press HOLD to lock the current value, and press HOLD again to unlock it.
 - Press the temperature switch key (°C/°F) to switch between Celsius and Fahrenheit
5. If no operation within 10 minutes, the meter will automatically shut down.
6. Press the ZERO key to calibrate the 0 point based on the current ambient humidity or the humidity of the measured object.

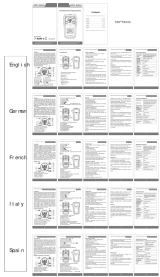
Maintenance

1. Keep the meter far away from high temperature, humidity, corrosive gases or objects.
2. Do not drop or impact the meter.
3. If there are stains or dust on the surface, please clean it with a wet sponge or soft cloth.
4. Please take out the battery before long-term storage to prevent it from leaking.
5. It is forbidden to disassemble the meter to avoid failure.

Technical Specifications

Product Name	Nondestructive induction hygrometer
Measurement Range	Softwood: 0%-55%, hardwood: 0%-35% the moisture readings of drywall and masonry are relative values
Measurement Accuracy	Softwood, hardwood, $\pm 4\%$
Maximum Measures red Depth	314 inch (20mm)
Automatic Shut-down	10 minutes
Colour Display	Ses
Battery	1.5V• 3 AM
Operation Current	20mA
Operation Temperature	0-40°C/32 -104°F
Operation Humidity	0%-70%RH
Storage Environment	-10-50°C/14 -122°F(5% -95%RH)
Dimension	132"73"33m m
Weight	About 150g (without battery)

Documents / Resources

	<p>MESTEK WM700A Humidity Detector Humidity Meter Humidity Sensor [pdf] User Manual WM700A Humidity Detector Humidity Meter Humidity Sensor, WM700A, Humidity Detector Humidity Meter Humidity Sensor, Detector Humidity Meter Humidity Sensor, Humidity Meter Humidity Sensor, Meter Humidity Sensor, Humidity Sensor, Sensor</p>
-------------------------------------------------------------------------------------	----------------------------------------------------------------------------------------------------------------------------------------------------------------------------------------------------------------------------------------------------------------------------------------------------------------------------------------------------