



mesh SST200 Device User Manual

[Home](#) » [MESH](#) » mesh SST200 Device User Manual 

Contents

- [1 mesh SST200 Device](#)
- [2 Getting Started](#)
- [3 Battery Installation and Replacement](#)
- [4 FCC Statement](#)
- [5 Documents / Resources](#)
 - [5.1 References](#)
- [6 Related Posts](#)

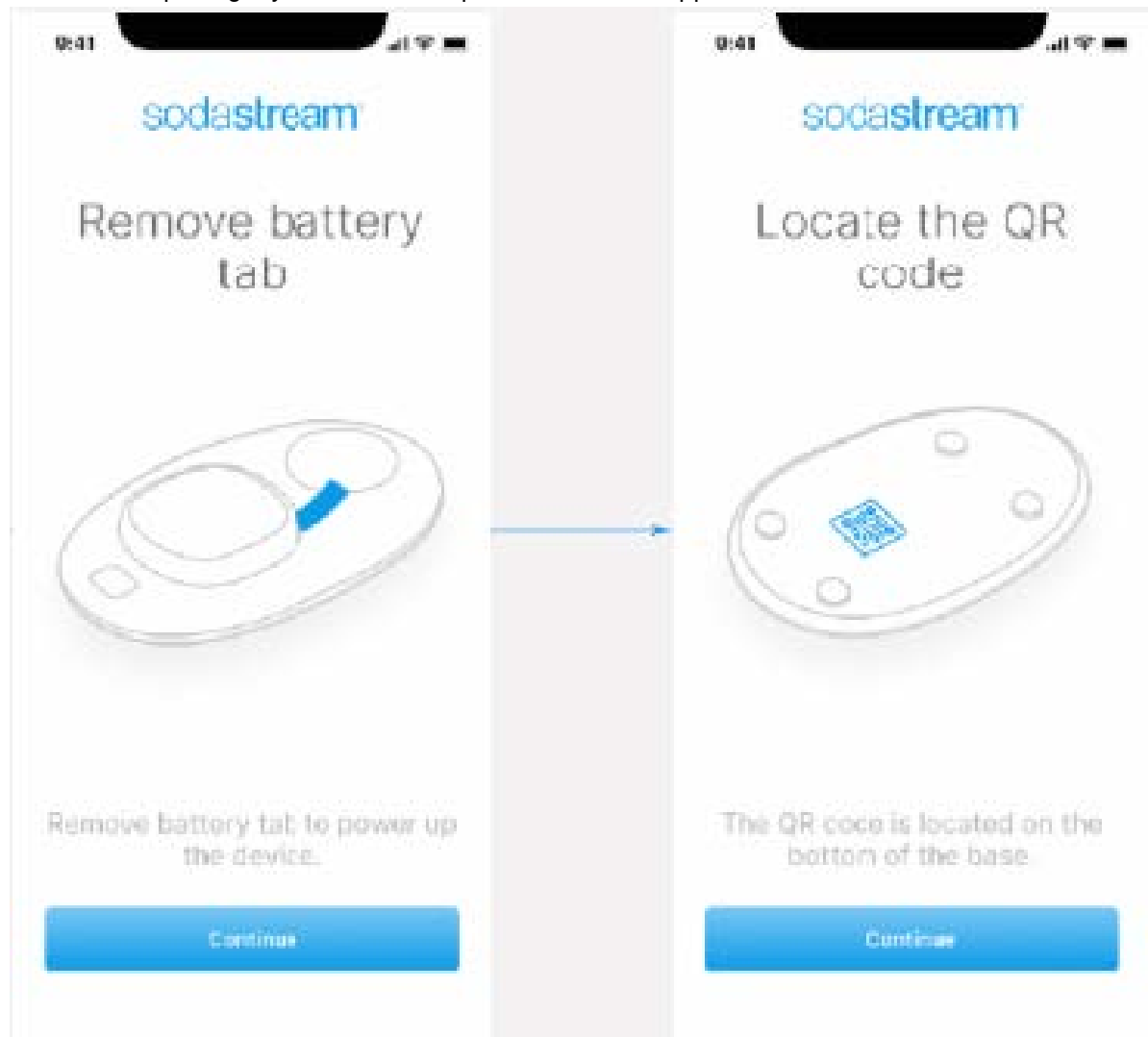


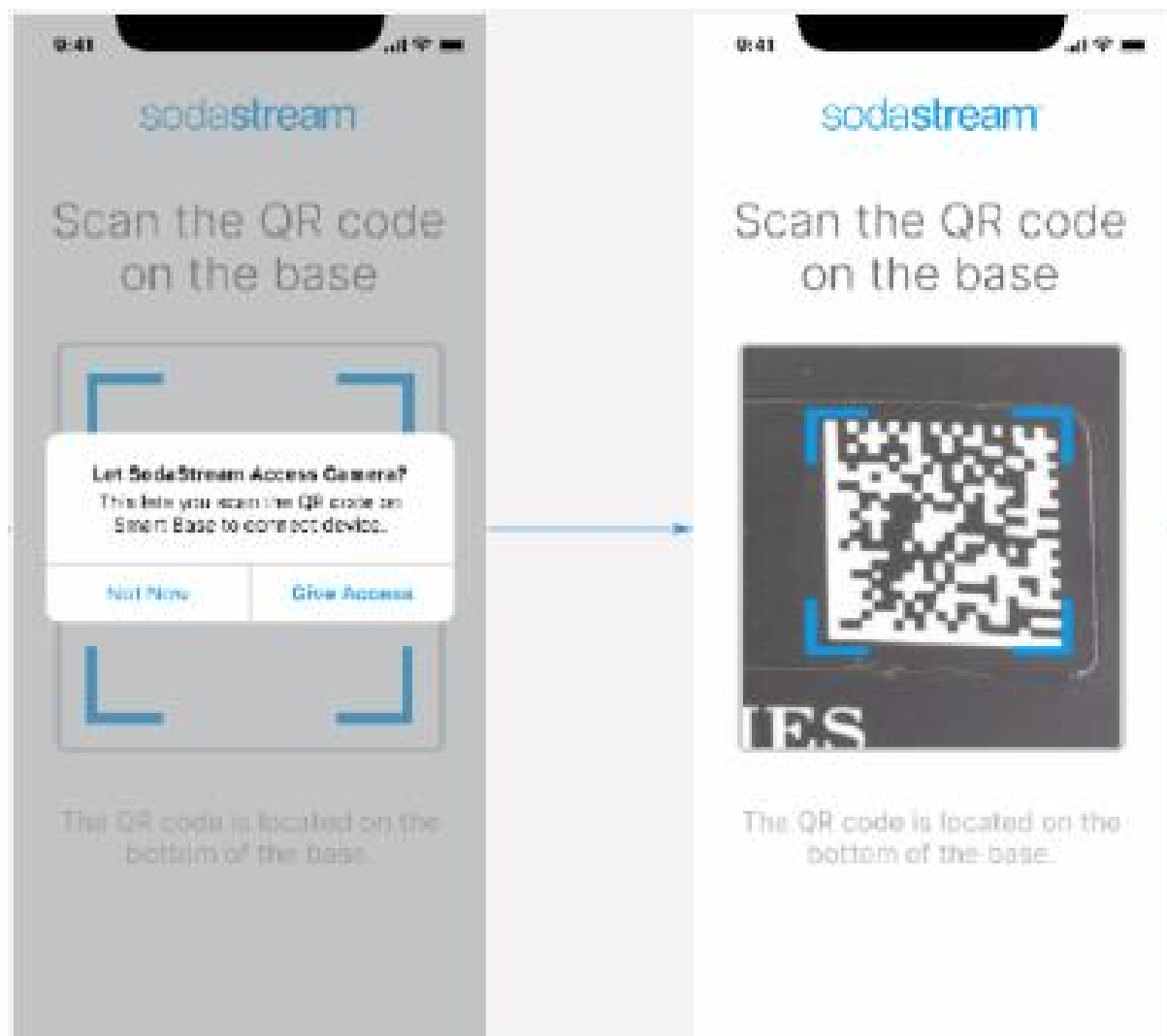
mesh SST200 Device



Getting Started

Follow the below steps to get your device setup with the mobile app.













9:41



sodastream

Select your
home WiFi

- ☒ Users_Home_wifi  
- ☐ Jeff_Home_777  
- ☐ Rmthorad  
- ☐ 40 goldfish  

with a network:

Personal

Show

Continue

9:41



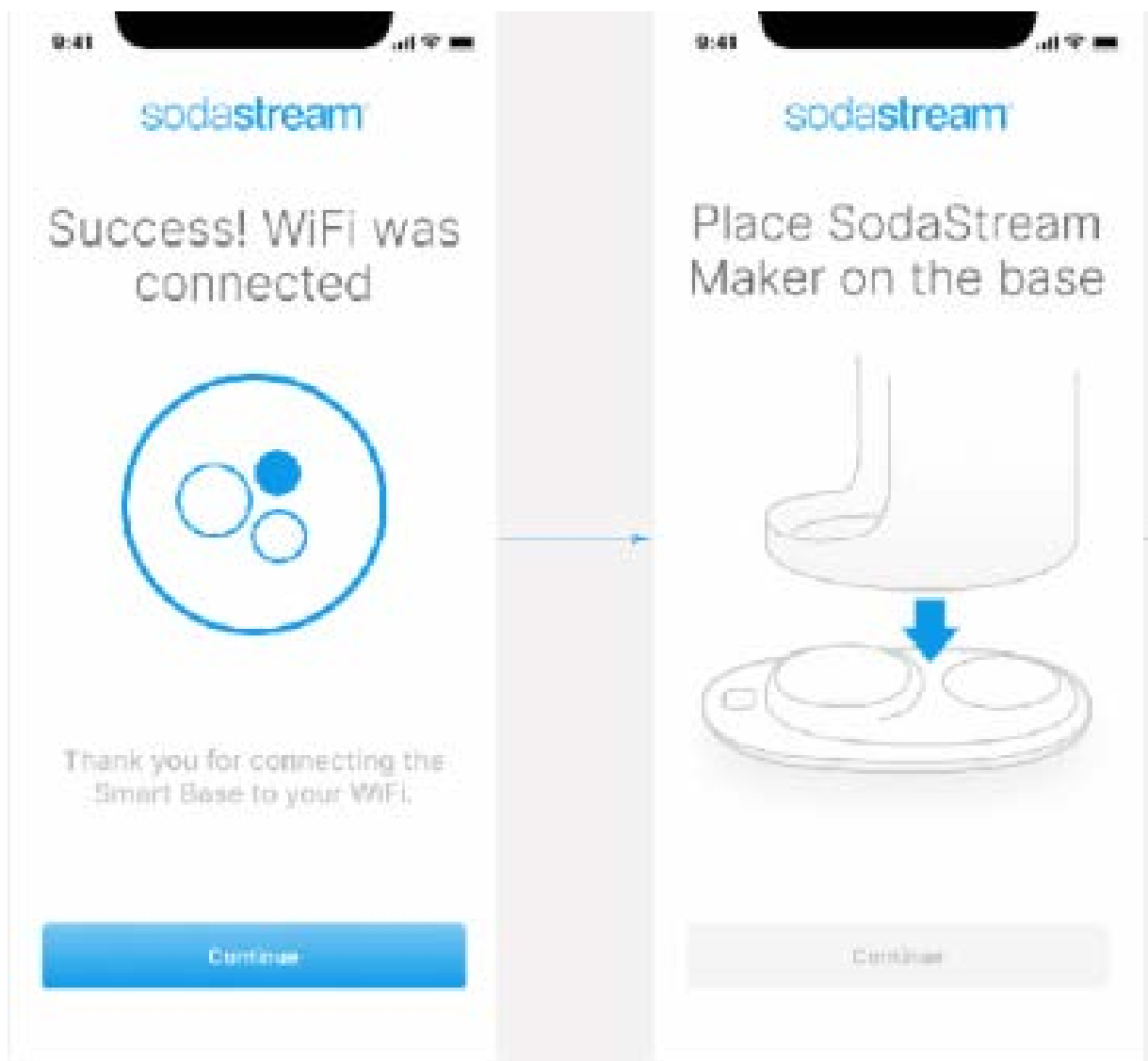
sodastream

Connecting to
WiFi...



One moment please, your
Smart Base is connecting to
your wifi.

Continue



Battery Installation and Replacement

To install or replace the batteries on the SST200 remove the plastic cover on top of the unit. When installing new batteries make sure that the orientation of the batteries matches the figures inside the battery compartment. After installing the batteries re-install the plastic cover on the device. The device is now ready to use.



FCC Statement

This device complies with Part 15 of the FCC Rules. Operation is subject to the following two conditions:

1. This device may not cause harmful interference and
2. This device must accept any interference received, including interference that may cause undesired operation.

INSTRUCTION TO THE USER


This equipment has been tested and found to comply with the limits for a Class B digital device, pursuant to Part 15 of the FCC Rules. These limits are designed to provide reasonable protection against harmful interference in a residential installation. This equipment generates, uses and can radiate radio frequency energy and if not installed and used in accordance with the instructions, may cause harmful interference to radio communications. However, there is no guarantee that interference will not occur in a particular installation. If this equipment does cause harmful interference to radio or television reception, which can be determined by turning the equipment off and on, the user is encouraged to try to correct the interference by one or more of the following measures:

- Reorient or relocate the receiving antenna.
- Increase the separation between the equipment and receiver.
- Consult the dealer or an experienced radio/TV technician for help.

The user is cautioned that changes and modifications made to the equipment without the approval of the manufacturer could void the user's authority to operate this equipment.

This equipment complies with FCC radiation exposure limits set forth for an uncontrolled environment. This equipment should be installed and operated with a minimum distance 20cm between the radiator and your body. This transmitter must not be co-located or operating in conjunction with any other antenna or transmitter.

Documents / Resources

	<p>mesh SST200 Device [pdf] User Manual SST200, 2AC46-SST200, 2AC46SST200, Device, SST200 Device</p>
---	--

References

- [M Mesh Systems | Home](#)