



MeSaidFamiy YL-98A Code Lock Installation Guide

[Home](#) » [MeSaidFamiy](#) » MeSaidFamiy YL-98A Code Lock Installation Guide 

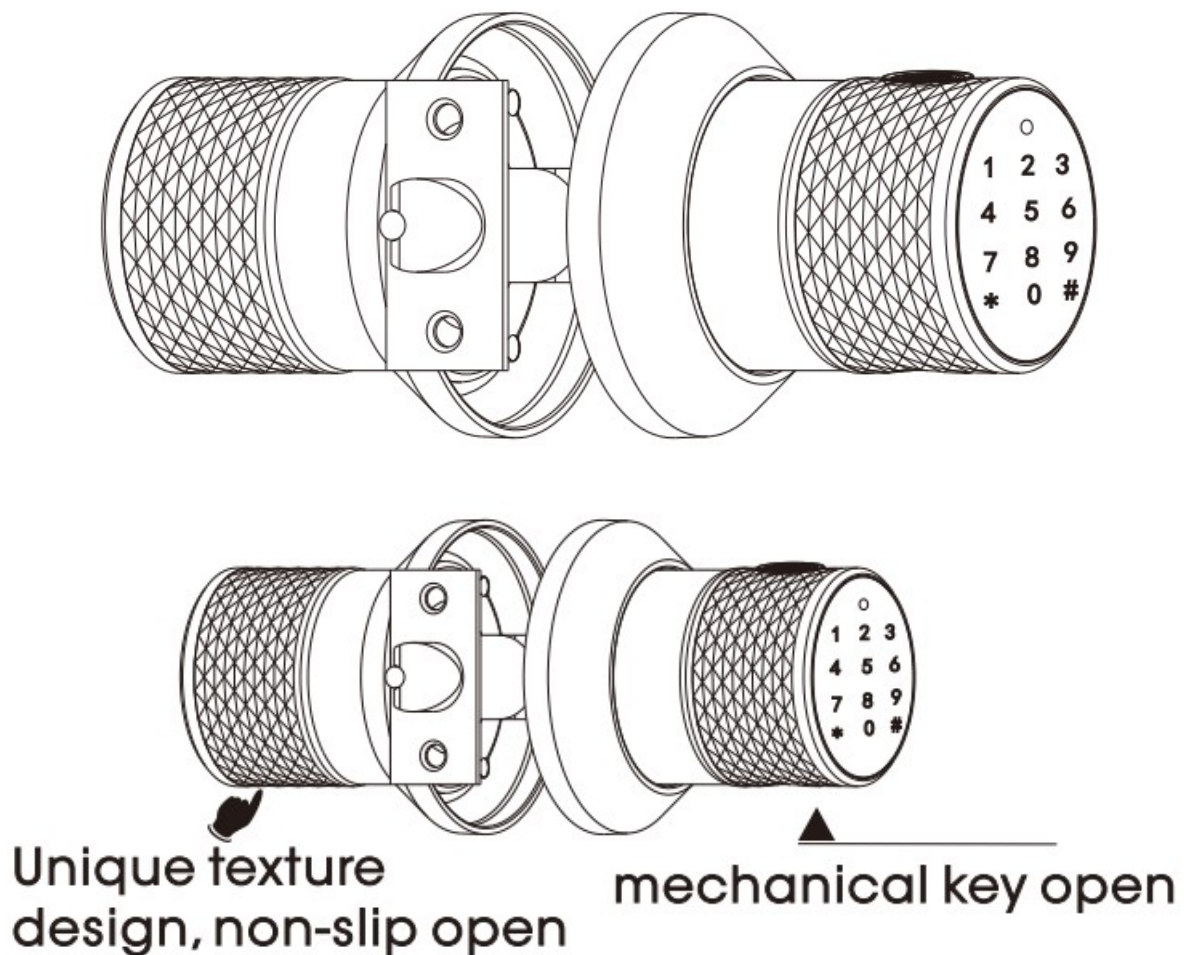
MeSaidFamiy

YL-98A Code Lock
Installation Guide
Programming and Installation Instructions

Contents

- [1 YL-98A Code Lock](#)
- [2 FEATURES](#)
- [3 DOWNLOAD APP](#)
- [4 ADDING DEVICE](#)
- [5 DOOR LOCK SETUP](#)
- [6 IOT INTELLIGENT](#)
- [7 MECHANICAL KEY OPEN](#)
- [8 BATTERY INFORMATION](#)
- [9 LOCK COMPONENTS](#)
- [10 INSTALLATION INSTRUCTIONS](#)
- [11 Documents / Resources](#)
 - [11.1 References](#)

YL-98A Code Lock



FEATURES

- Waterproof seals protecting electronic components
- Backlit keypad for use in low light
- Up to 255 users, and can allocate the number of users by itself
- Latch assembly with adjustable backset
- DIY installation (instructions included)
- Anti spy code encryption
- It supports bluetooth unlocking, pair with gateway can realize 10T intelligent
- mechanical key open

SMART LOCK USER MANUAL

Installation Test Mode: Any set of password + # or any fingerprint (optional) can be unlocked for testing when the product leaves the factory. When the door lock is bound to the APR it will automatically exit the test mode. And the lock be unlocked only after the user with fingerprint or password is added.

DOWNLOAD APP

The App can be downloaded by searching Smart Life or Tuya Smart from the search engine or application markets, or by scan the below QR code for download and installation.

SMART LIFE



TUYA



<http://smart.tuya.com/download>
<https://smartapp.tuya.com/smartlife>

Scan the QR Code and open it at the browser

APP REGISTER AND LOG IN

Step 1.

The users can use mobile phone number or email to register the account, currently can support more than 200 countries and regions' mobile phone number, when register, it will send a verify code to the mobile phone number or email, after verify success, need to setup a mobile phone login password, please use the letter and number combined password, after setting, jump to the home page directly.

Step 2

At the login page, please input the mobile phone: number or email, input password to login, if forget password, please enter the forget password page to reset password.

ADDING DEVICE

Step 1.

If the products has central control of distribution gateway, please add gateway first, click the select device to add or click the "+" icon at the right top of the mobile phone to enter adding page, select Gateway Control at the left, and select the relevant device according to the gateway box (like wireless gateway blue-tooth)

Step 2.

Adding door lock device, at the app page, click right top corner "+" to adding the door lock, under the Smart Lock select blue-tooth door lock, select start blue-tooth pairing after it jump to adding smart lock, click next. App will auto scan the door lock device and at this time, the mobile phone don't keep away from the lock too far, and if don't search the lock for long time, please touch the lock keypad to active the lock.

Step 3.

Solution to failure of adding door lock device. For the door lock using safety, only allow one mobile phone binds the door lock device, in case of adding door lock device failed, it proves that this door lock has been bound by the other user, It must be unbound on the bound user's mobile phone. At the first page of the original mobile phone, click the edit icon at the right top, click remove device, select unbound or bound and clear the data, after this operation can support other user bound the device. If can not find the original mobile phone, please contact the distributor to apply for unbound data.

ADDING MEMBER SHARING USE SMART LOCK WITH FAMILY

Step 1.

The want-to-add member's mobile phone must first download the app and register to login

Step 2

Click Me at the App Home page, then click Family Management, setup the family name and save, then click add member, setup member name, input member app account and save. After the member's mobile phone accept the invitation, he can use the device. The device owner app, can add or remove: member from the Family management. The default connect time between the smart lock and app is 3 minutes, overtime disconnect automatically. The lock cannot connect to two members simultaneously.

PHONE UNLOCK AND DYNAMIC PASSWORD UNLOCK

Step 1.

Mobile phone unlock: open App, click the added smart lock device, will see the icon Tap and Hold to Unlock, tap and hold the icon, the lock will automatically unlock, at this time, turn the handle to open within 3 seconds.

Overtime the lock automatically locked. (If select the gateway can realize remote unlock, if don't paired gateway, only can unlock within the smart lock's blue-tooth cover area)

Step 2.

Dynamic password unlock: open App, click the added smart lock device, Left swipe the screen, click Add password, the system will generate a group of password valid for only 5 minutes (for example 12 3456), copy the password and share to your friend, as long as your friend input the 123456# within the valid time, it can unlock.

PASSAGE MODE – ONE DIGIT ACCESS

The YL-98A has the ability to be set to passage mode by entering a passage code:

In passage mode, all users can press any key to open the door without requiring a user code:

How to enter/cancel passage mode

After entering the master password, press * and # to open the passage mode, and then in this mode, press any number key to start the door lock. In passage mode, press * and # to cancel the passage mode.

DOOR LOCK SETUP

Open App, click the added smart lock device, click set enter the setup page, when setting user, the smart lock device and store max 250 users, and the number of users can be allocated by themselves. During the setting operation, the Bluetooth signal connection between the mobile phone and the door lock must be normal.

Step 1.

Add Fingerprint (option): click fingerprint management enter adding fingerprint, select the family user and click Add Fingerprint, the fingerprint window of the door lock will light on, continuous capture 6 times from different angle of the same finger (must have the action of press and lift up the finger). the door lock beeps "dudu". fingerprint added successfully. please name the member on the app for later convenience management, click right top corner + icon to continuous add other fingerprint users.

Step 2.

Add password: click Password management enter add password, select the family member to add password, password can be random or customized, input 6-10 digits password, edit the password name and save, the door lock beeps "dudu", password added successfully, click the right top corner + icon to continuous adding other password user.

Step 3.

Add temporary password

- a: One-time password, the password can be used only once before it expires (suitable for guest visiting use)
- b: Periodic password: The password can be used multiple times before it expires, the password can set start time and end time, can set use period and time sessions (suitable for nanny and cleaner use)
- c: Time-Limited password, the password can set valid time and invalid time, during the valid time can use unlimited times, overtime automatically invalid. Use the time-limited password at least use once within 24 hours after the password takes effect. Otherwise, the password become invalid (suitable for renting)

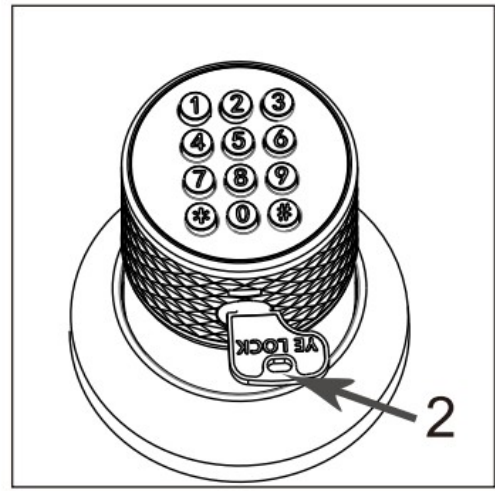
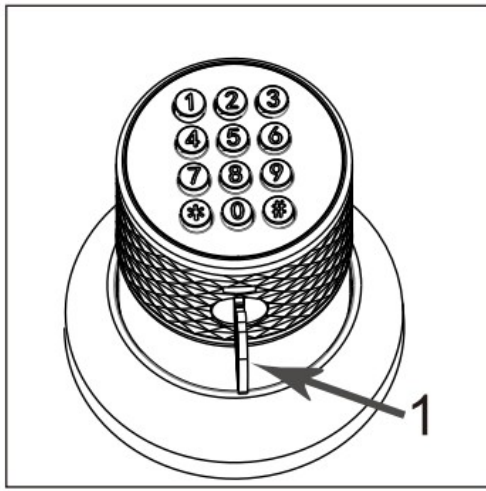
Step 4.

Clearing code: Clearing code can make the setup temporary code come invalid, can be used to clear a password or all passwords. After gaining the clearing code, please operate the clearing code on the door lock within 24 hours. (example: the clearing code is 585858, then input 585858+ on the door lock, the door lock beeps "dudu" means cleared successfully.)

IOT INTELLIGENT

The smart lock is built on the platform of Tuya Smart, supports the Bluetooth central control gateway of Tuya Smart, and can be associated with the Tuya smart app to realize the automatic scene use of smart home IOT

MECHANICAL KEY OPEN



1. Insert key. fib. 1
2. Twist the key 90 degree, fib.2
3. Turn the knob fo open

BATTERY INFORMATION

The lock requires four 'A A' alkaline batteries which are housed in the interal handle.

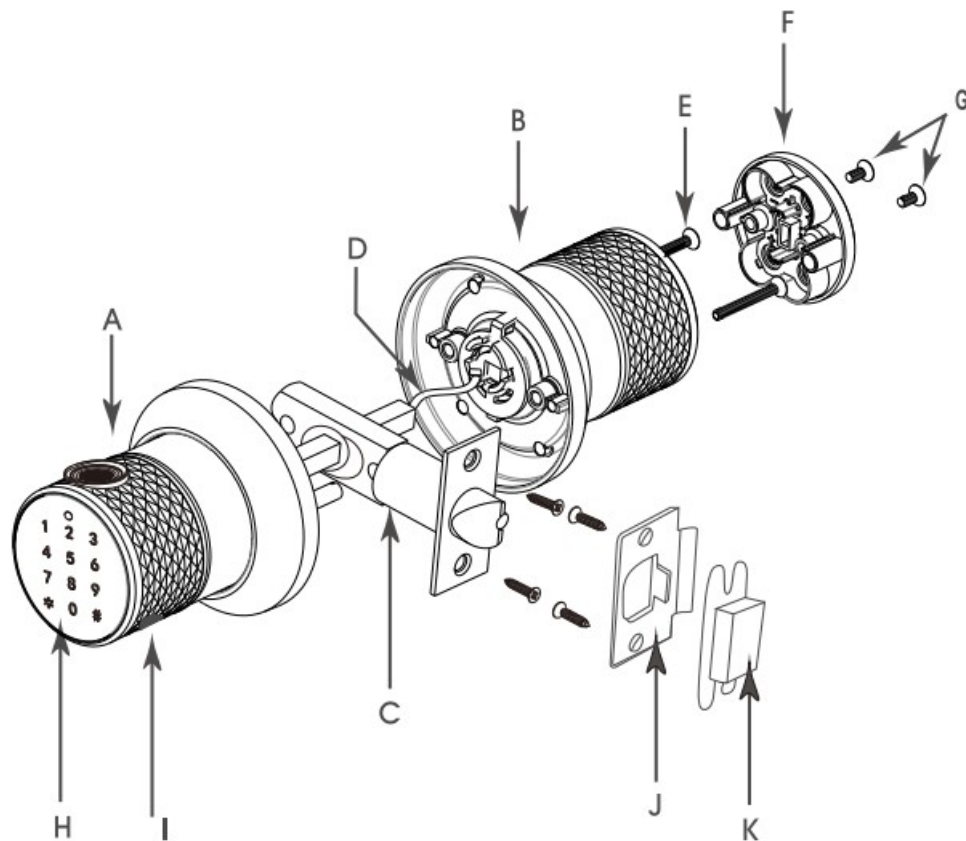
The lock has a low battery indicator which when unlocking the door will sound a continuous beep, followed by a single beep.

New batteries should be installed within approximately two weeks.

Expected battery life ls approximately 180 days and all time measurements are calculated on twenty uses per day.

If the batteries are completely dead, you can use the emergency backup battery pack (supplied) to power the lock, however ensure that the batteries in the lock are replaced immediately.

LOCK COMPONENTS



A: Outside Knob
 B: Inside knob
 C: Latch Assembly
 K: Wrought Box

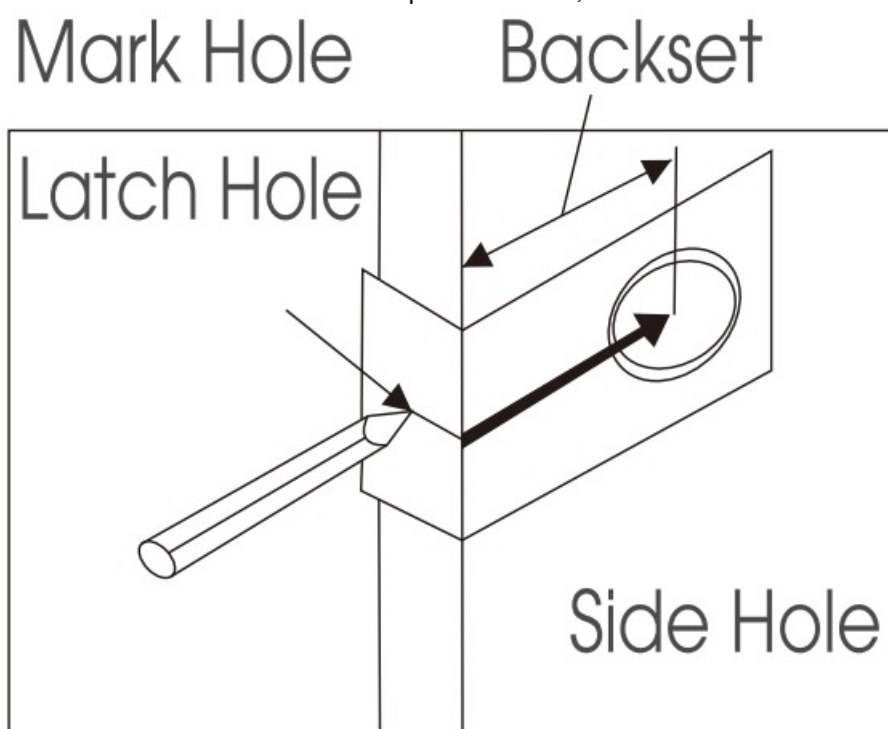
D: Power cable
 E: mounting screw
 F: Battery cover
 I: Emergency power socket

G: Mounting screws
 H: Keypad
 J: Strike Plate

INSTALLATION INSTRUCTIONS

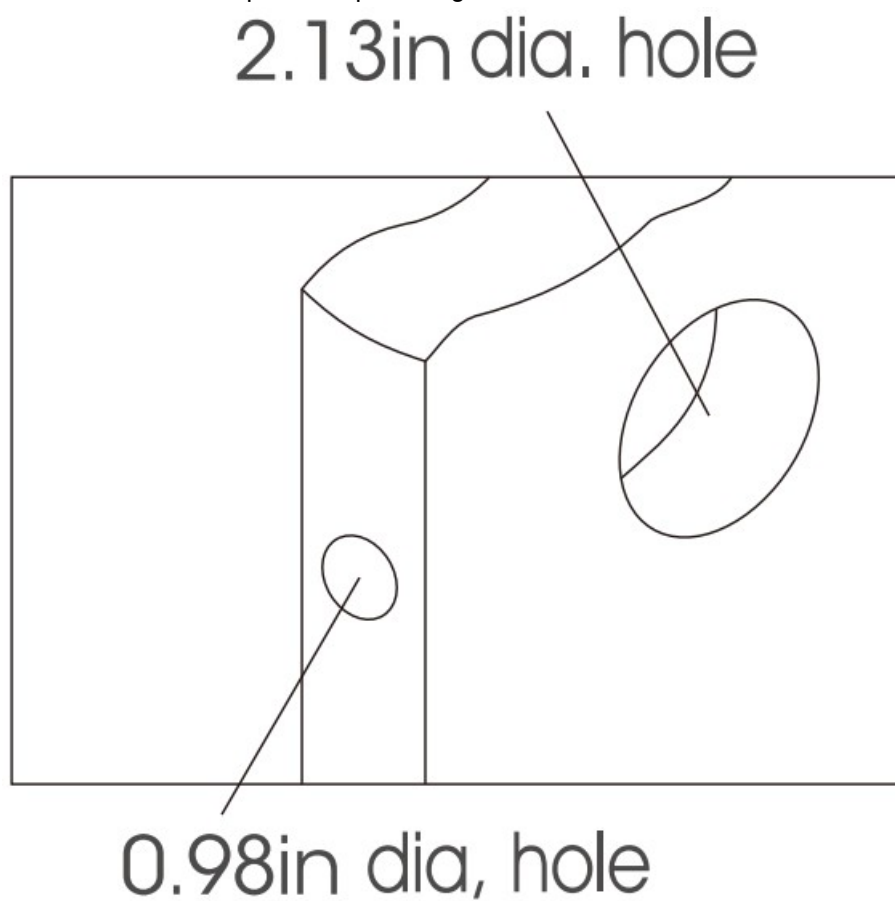
Step 1. Mark Door

Using femplate, Mark hole on both sides of door at required backset, then mark latch hole on door edge.



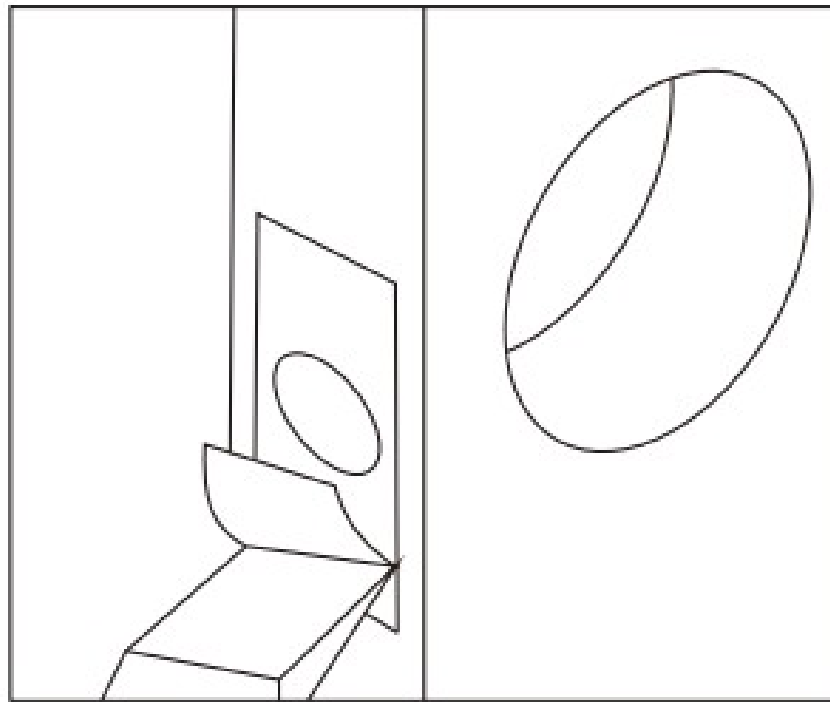
Step 2. Drill Holes

Bore a 2.13in hole on door face, then il 0.98in hole in door edge fo infersect with center of 2.13in hole. Nofe: Diil 213inhole from both sides of door o stop wood splintering

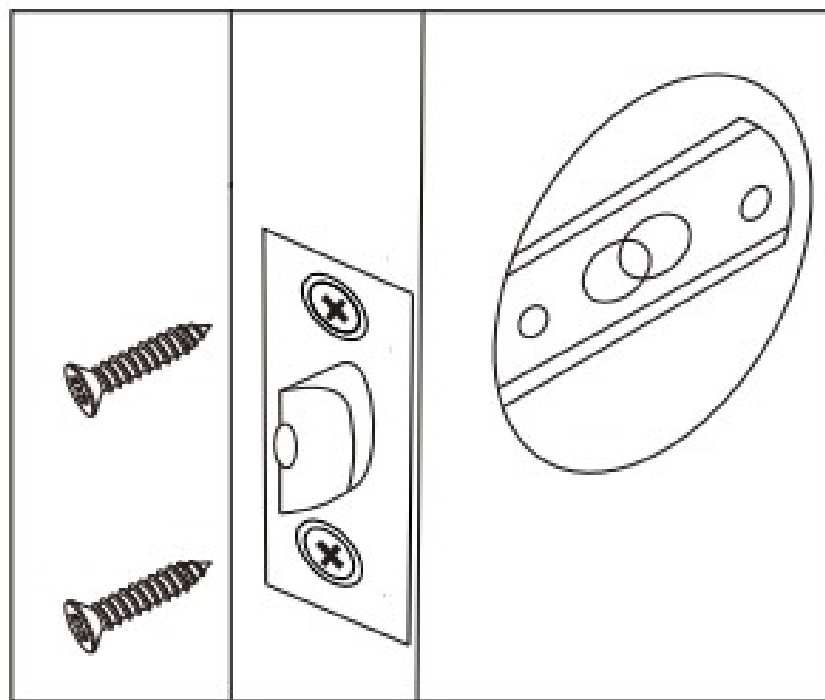


Step 3. Install Latch

Insert latch info hole and mark a line around edge of latch plate and remove latch. (Fig. 3a)



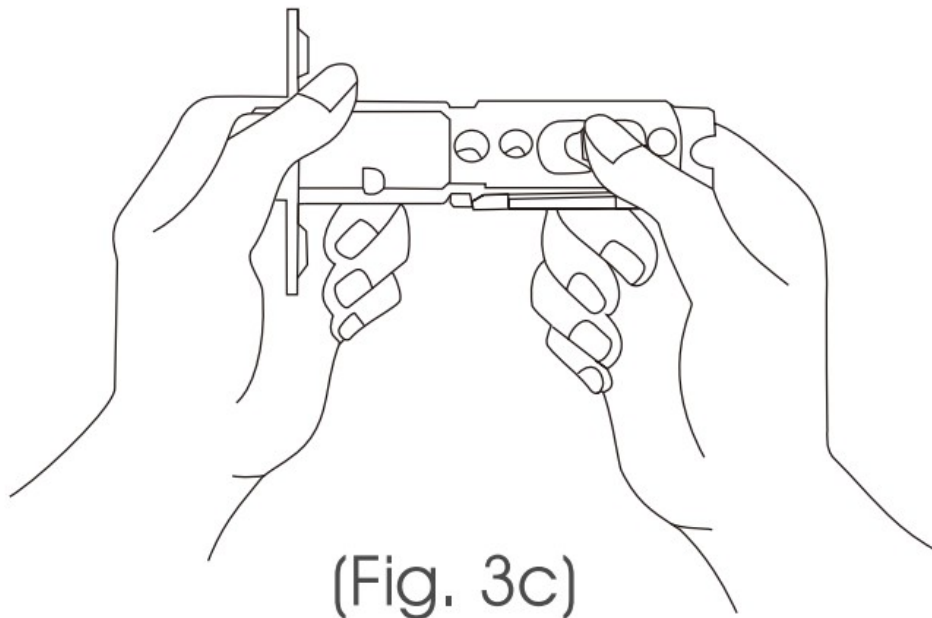
(Fig. 3a)



(Fig. 3b)

Chisel approx. 0.12in deep or until latch plate sits flush with door edge. (Fig. 3) 0.9inx6in Insert latch then il 0.9inx6in holes for mounting screws and fasten latch. (Fig. 3b)

Note: The latch length can be adjusted. As shown in the figure, hold the position of the latch square hole and pull it back horizontally to select 2.36in or 2.75in. (Fig.3c)



(Fig. 3c)

Step 4. Install Strike

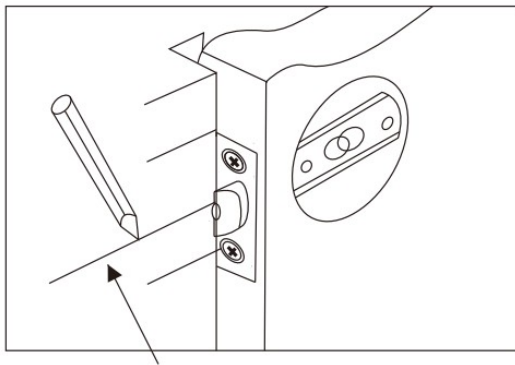
Close door and mark horizontal centre of latch on to door frame. Mark vertical line where door edge meets frame and measure in half of door thickness to find vertical centre. (Fig. 4a)

Extend both lines until they intersect and drill a 0.98in hole 10 0.6 depth.

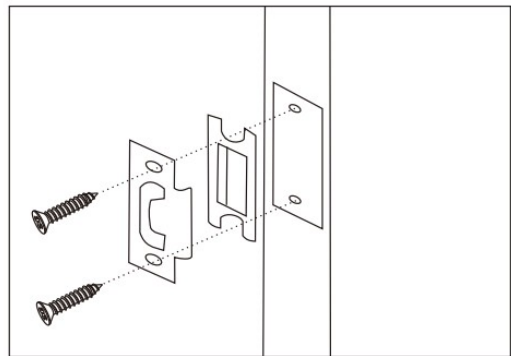
Position strike plate and mark around edge.

Chisel frame to approx 0.06in depth or until strike sits flush.

Drill 0.9inx6in screw holes and fix strike to frame. (Fig. 4b)



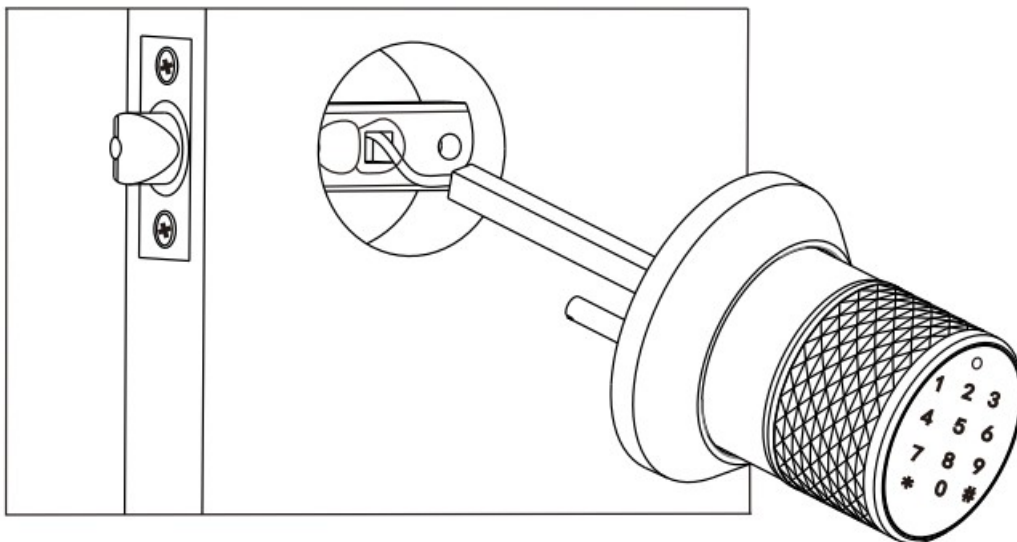
Horizontal Centre Line (Fig. 4a)



(Fig. 4b)

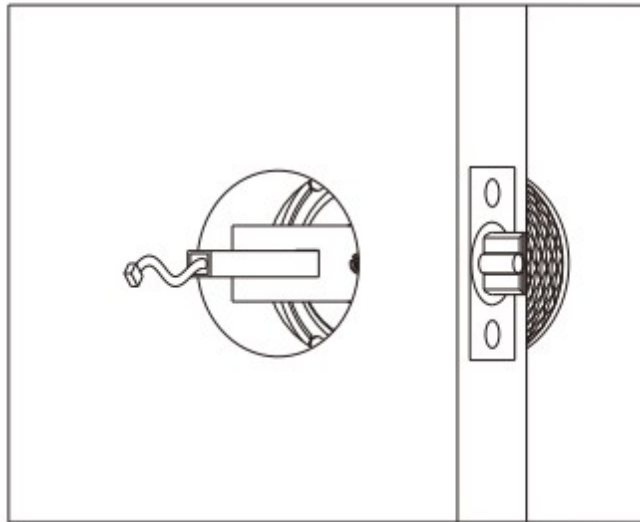
Step 5. Install Outside Knob

Feed the power cable through latch and guide spindle through until outside rose sits flush

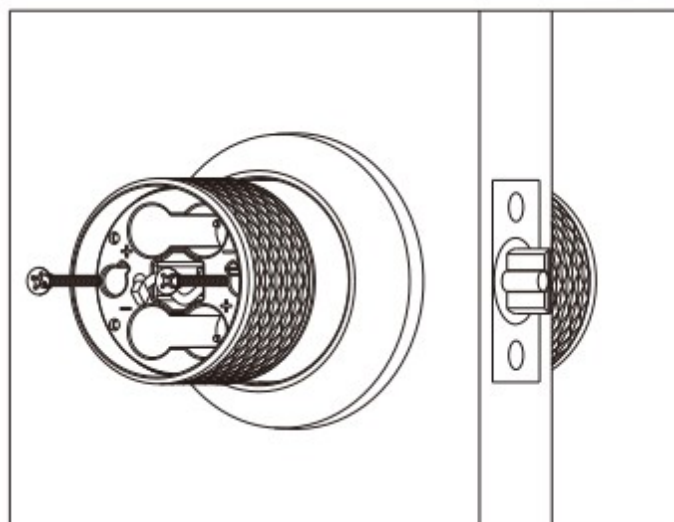


Step 6. Install Inside Knob

Feed power cable through hole in knob and guide spindle into handle. (Fig 6a) Screw inside knob to outside knob using mounting screws. (Fig. 6b)



(Fig. 6a)

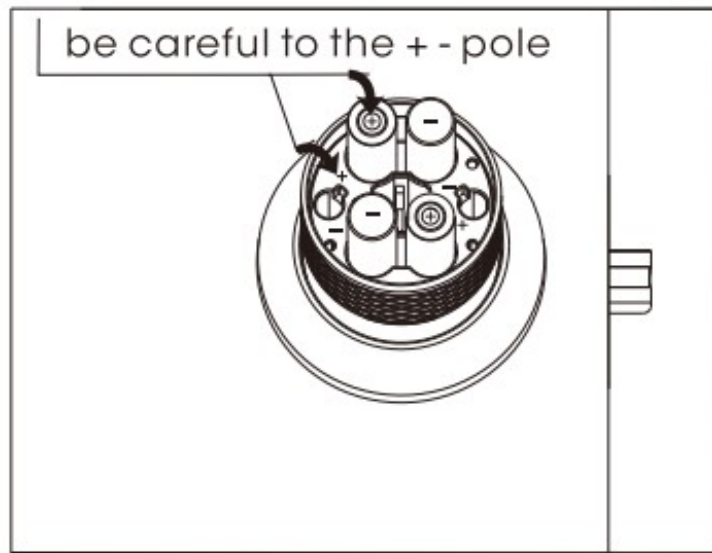


(Fig. 6b)

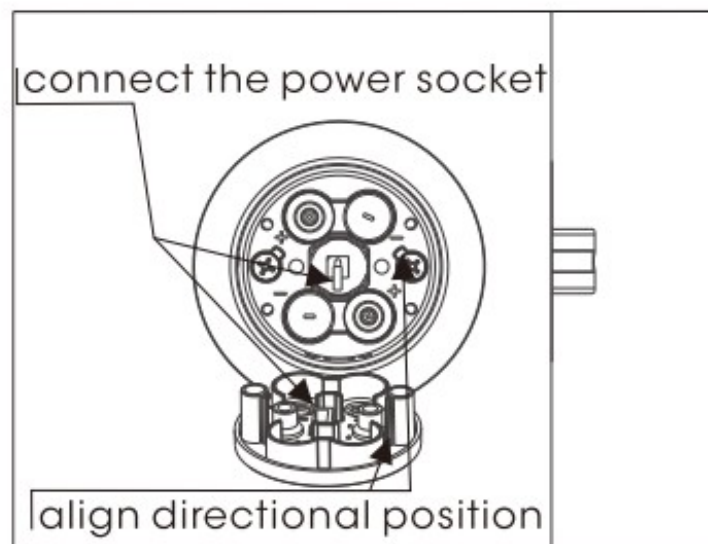
Step 7. Install the battery

Install 4 pieces LR6 / 1.5v/ AA alkaline batteries into the battery box, and install the + / – batteries in strict accordance with the arrow as shown in the figure

The wrong insfalling + / – battery will make the product unable fo work, and will also lead to destructive malfunction



(Fig. 7)



(Fig. 8)

Step 8.Install the battery cover

- a.Plug the power cord into the power socket as shown in the figure
- b.Recycle the excess power cord into the hole
- c.Install the battery cover in the orientation position and fasten 2 mounting screws

The Installation Instructions for YL-98A Digital Lock

1. Select the lock-tongue between the size of 60mm and 70mm
2. Plug in the power socket according to the installation diagram.The extra power cord must be recycled and kept from crushing.
3. Install 4 AA alkaline batteries and make sure the positive and negative electrodes are placed correctly;
4. Screw down the mounting screw and keep the handle inside and outside flexible.

Routine Troubleshooting for YL-98A Digital Lock

1. De-energized

- (1) Inspect whether the plug falls off or be plugged in oppositely;
- (2) Inspect whether the positive and negative electrodes of the 4 batteries are opposite;

(3) Inspect whether the wire and power line of the batteries holder are broken

2. Incapable of unlocking with New Installation and Charging

(1) Enter the correct password and press “#”, then rotate the handle and open the door before the unlocking beeping stops. (Please note the key words:

1. Enter the correct password; 2 Unlock before the beeping stops.)

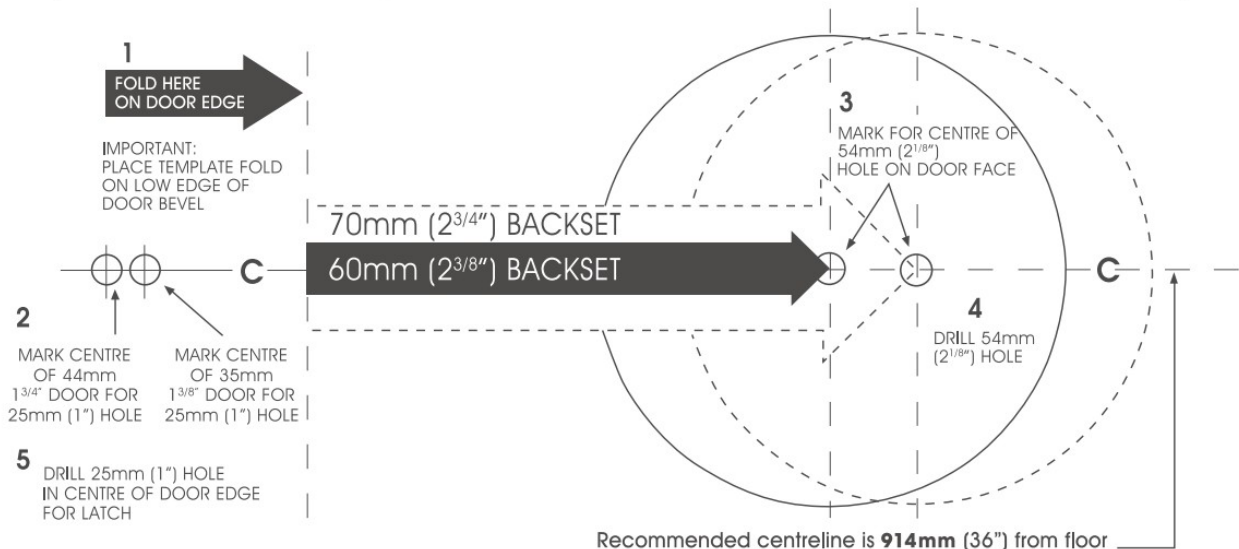
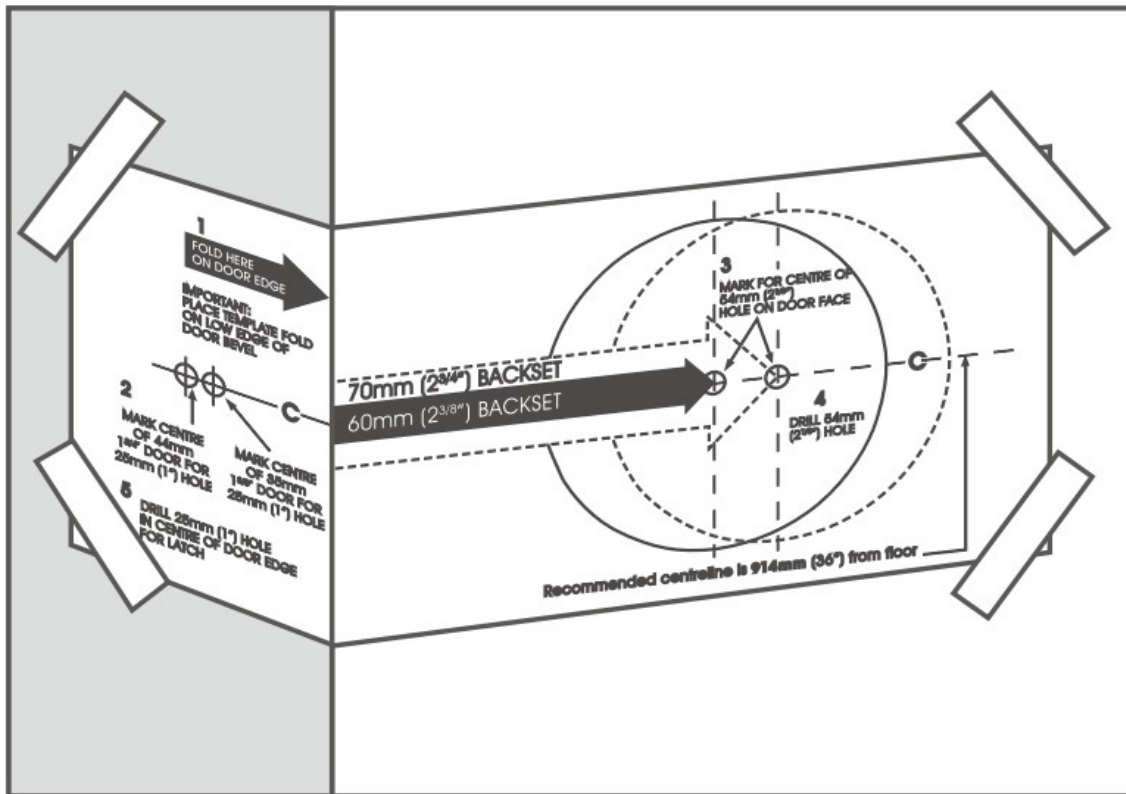
(2) Distinguish the correctness of the password. There will be a beeping of 2.5s if a correct password is entered ended with “#”. If not, that means the password is wrong. Please reset the password on the mobile phone App.

3. Broken Down in a few months after Using

(1) It must be caused by the use of bad batteries. Good alkaline batteries can work for about 1 year. The issue could be fixed by changing the batteries.


(2) How to judge the under-voltage of batteries: when continuous beeping (10 times) is heard after the door is unlocked with the correct password, it means the batteries are under-voltage. Please change the batteries in 15 days after the first beeping is heard.

Stick template to door, aligning fold correctly on door edge.



MeSaidFamiy

Documents / Resources

	MeSaidFamiy YL-98A Code Lock [pdf] Installation Guide YL-98A Code Lock, YL-98A, Code Lock, Lock
---	--

References

- [User Manual](#)