



# meross EN14604 Interlinked Smart Smoke Alarm User Manual

[Home](#) » [Meross](#) » meross EN14604 Interlinked Smart Smoke Alarm User Manual 

# meross

## User Manual

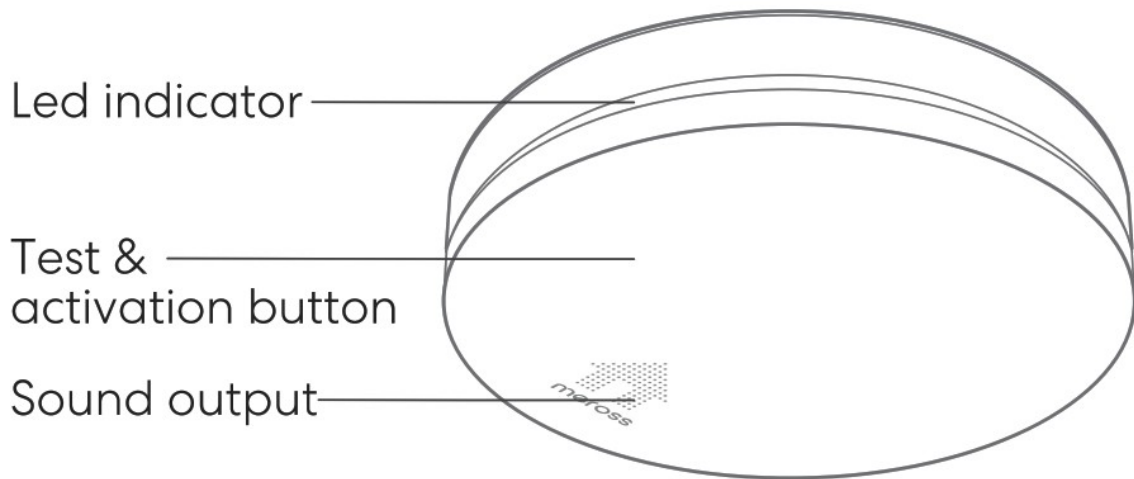
### Contents

- [1 Safety Information](#)
- [2 LED, Acoustics and Button Rules](#)
- [3 Installation Guide](#)
- [4 Activation](#)
- [5 Mounting](#)
- [6 Working Mode](#)
- [7 Maintenance](#)
- [8 Recycling and disposal](#)
- [9 Service](#)
- [10 Product Specifications](#)
- [11 Warranty](#)
- [12 Documents / Resources](#)
  - [12.1 References](#)
- [13 Related Posts](#)

## Safety Information

- Before using the device, please read these instructions carefully to ensure proper usage and store them in a safe place during the entire lifetime of the product.
- To prevent injury, this apparatus must be securely attached to the ceiling/wall in accordance with the installation instructions.
- Batteries should not be exposed to excessive heat such as sunshine, fire or the like.
- Do not paint or cover the smoke alarm.

## LED, Acoustics and Button Rules



### Overview visual & acoustic signals

Operation mode	Visual signal (flash)	Acoustic signal (beep)	Description mode
Normal	1 x per 40 second	None	Device is functioning properly
Test	1 x per second (3x)/ pause of 1.5 seconds	1x per second (3x) pause of 1.5 seconds	Device is tested
Alarm	1 x per second (3x)/ pause of 1.5 seconds	1x per second (3x) pause of 1.5 seconds	Device is detecting smoke
Alarm silence	1 x per 8 seconds	None	Smoke alarm signal is muted
Low battery warning	1 x per 40 seconds	1x per 40 seconds	Battery is running low
Low battery warning silence	None	None	Low battery warning is muted
Sensor fault warning	1 x per 40 seconds	1x per 40 seconds	Sensor is not functioning properly
Buzzer fault warning	2 x per 40 seconds	None	Buzzer is not functioning properly

## Installation Guide

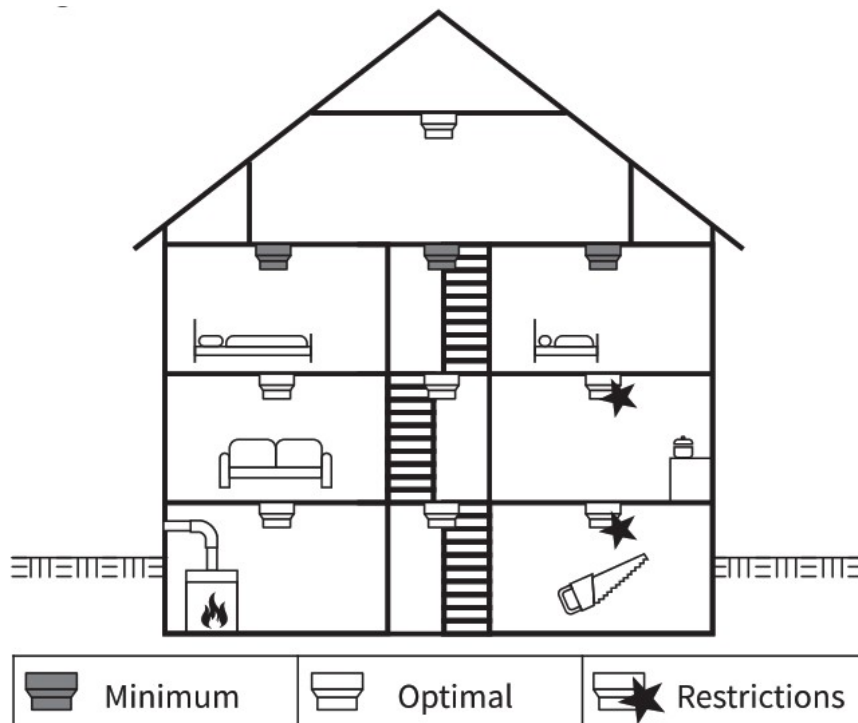
### Product description and intended use

This is smoke alarm with an optical sensor for installation in residential buildings, apartments and rooms with residential-like use. Smoke alarms are designed to provide an early warning of fire smoke and fires to persons present, so that these persons can react appropriately to the hazardous event. Always consult local regulations for smoke alarms.

### Where to install a smoke alarm

Smoke alarms must be installed in such a way that they can be reached unhindered by the fire smoke so that fires can be reliably detected during the development phase.

- Install at least in sleeping areas (especially children's rooms).
- Install at least in escape rooms.
- In the middle of the ceiling of a room.
- At least 50cm away from the wall and other objects.
- Maximum installation height of 6 meters.
- If ceiling installation is not possible, the smoke alarm can be installed on the wall. The distance to the ceiling should be between 30 and 50 centimeters.



### Where to install a smoke alarm in rooms with special geometries

- Corridors with a maximum width of 3m: Max. 15m between 2 smoke alarms. Max. 7.5m to the front side of the gallery and smoke alarms at edges/crossings of corridors.
- Rooms with sloping ceilings:
  - Ceiling inclination is  $> 20^\circ$  to the horizontal: Smoke alarms must be installed at least 0.5m and at most 1m from the ceiling top.
  - Partial roof slopes: If the flat ceiling is  $< 1\text{m}$  wide, consider as ceiling inclination is of  $> 20^\circ$ . If the flat ceiling is  $> 1\text{m}$  wide, consider as flat ceiling.
- Rooms with subdivided ceilings:
  - Height of the subdivisions is  $< 0.2\text{m}$ : Beams without consideration: smoke alarm may be installed on the beams or the ceiling.
  - Height of subdivisions is  $> 0.2\text{m}$  and area of ceiling panels  $> 36\text{m}^2$ : Smoke alarm should be installed in each ceiling panel.
  - Height of subdivisions  $> 0.2\text{m}$  and area of ceiling panels  $< 36\text{m}^2$ : Individual ceiling without consideration.

### Where not to install a smoke alarm

- In an environment with a high risk of draught (e.g. close to air conditioning, fans and ventilation outlets). The

movement of air can impair the penetration of fire smoke into the smoke alarm.

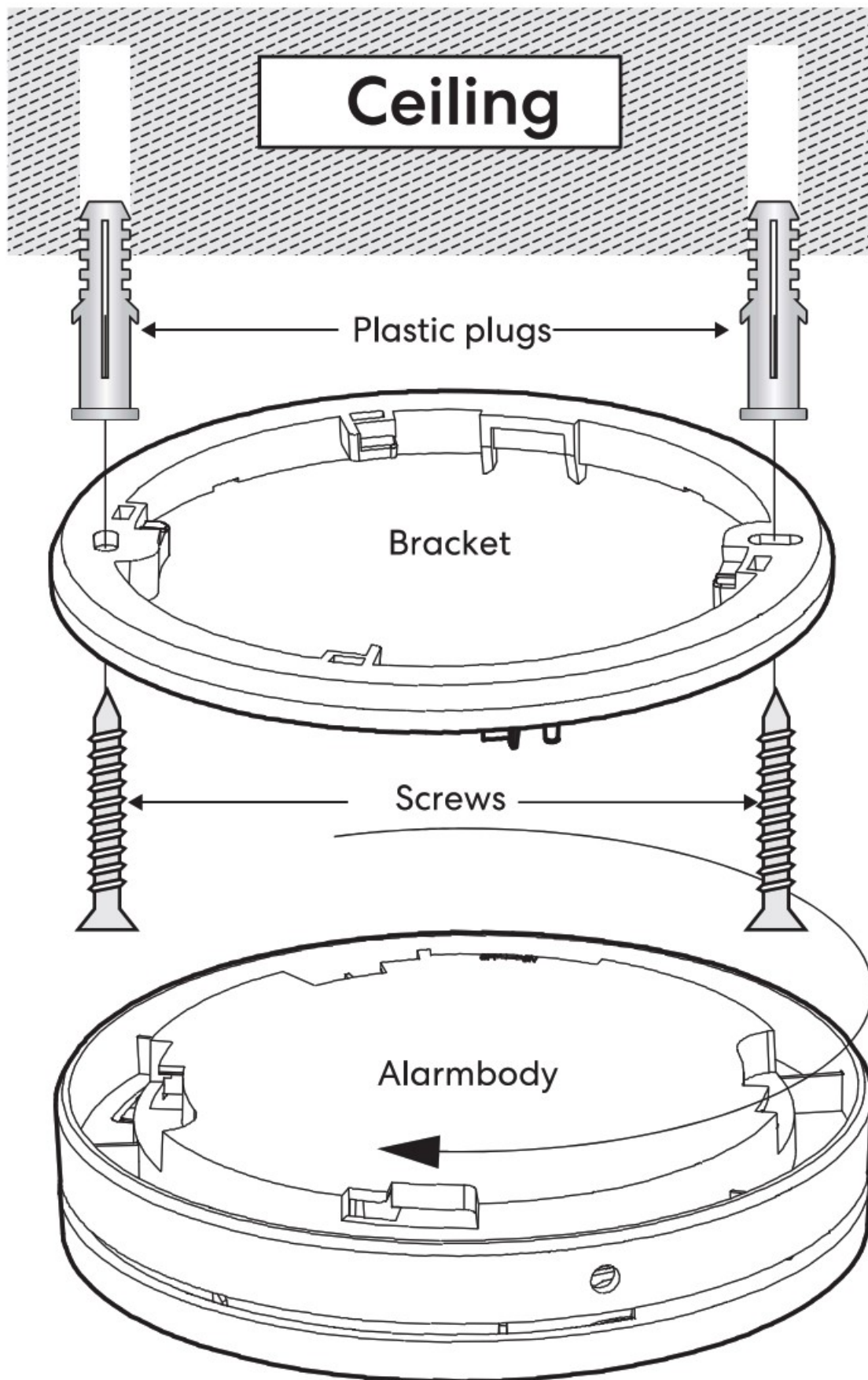
- Areas where combustions regularly occurs, such as kitchens.
- Areas with high humidity such as bathrooms, or close to devices such as dish washers or washing machines.

## **Activation**

Before commissioning the smoke alarm, it is important to activate it and test it for correct operation.

- Press the test button and hold it for approximately 3 seconds until the led indicator lights up. Release the test button immediately after this, The smoke alarm will generate a beep to indicate that it's activated.
- Test the correct activation of your smoke alarm by pressing the test button. If no sound is generated, the smoke alarm is not activated properly and should not be used!

## **Mounting**



- Place the mounting plate on the desired installation location and mark where the holes should be drilled.
- Drill two holes with a diameter of 5 millimetres.
- Push the plastic plugs into the holes.
- Remove the fixing plug from the mounting plate (if necessary, use a screw driver for this).
- Insert the screws into the mounting plate, and tighten them firmly into the plugs.
- Place the smoke alarm on the mounting bracket and secure it by turning it clockwise.

- Insert the fixing plug into the hole between the mounting plate and the smoke alarm to fix your alarm.
- Test the correct operation of your smoke alarm by pressing the test button. If no sound is generated, the smoke alarm is not functioning properly and should not be used!

## Working Mode

### Alarm silence facility

When the smoke alarm has detected smoke and turns into the alarm mode, you can mute the alarm for 10 minutes by pressing the test button. After that, the smoke alarm automatically resets and returns into the normal operation mode. If there are still particles combustion in the air, the smoke alarm will turn into the alarm mode again.

**WARNING:** Use this function only if you are absolutely sure that the alarm was triggered by a Known problem, e.g. smoke development during cooking.

### Low battery mode

When the battery is running low, the smoke alarm will indicate this with a repetitive beep and flash for approximately 30 days.

**WARNING:** This smoke alarm is equipped with a non-replaceable battery. When this warning occurs, replace the device as soon as possible! The acoustic low battery warning signal can be muted for ten hours by pressing the test button. The smoke alarm is still functioning and able to detect smoke when it's in this mode.

### Fault warning mode

The smoke alarm runs through a periodical self-test. When the smoke sensor is not functioning properly, it will turn into the sensor fault warning mode. Try cleaning the smoke alarm (see paragraph "Maintenance") or replace the smoke alarm! If the buzzer is not working correctly, the device will turn into the buzzer fault warning mode. Please immediately contact the manufacturer or replace the smoke alarm when this occurs.

### Night mode

This smoke alarm has an automatic night mode. In dark rooms, the led signal will be dimmed to prevent disturbance of the night's sleep.

## Maintenance

- This smoke alarm is equipped with a self-testing mechanism. We recommend to test the smoke detector manually at least once every three months by using the test facility. If the smoke alarm functions correctly, it will generate a loud beep. Due to the loudness of the alarm, make sure that you always stand at arm's length distance from the unit when you are testing. If the smoke alarm does not generate an acoustic signal, the smoke alarm must be replaced immediately!
- Clean the smoke alarm at least once per month to remove dirt, dust or debris. Use a vacuum cleaner with a soft brush and vacuum all sides and covers of the smoke alarm. Do not remove the top cover of the smoke alarm to clean it inside.
- Do not attempt to repair this smoke alarm. If the smoke alarm shows a damage related to its functionality, it must be replaced!
- Trouble shooting: False alarm is often caused by dust or steam.

### Disassembling

To disassemble the smoke alarm, take a screw driver and push it into the mounting hole. Then, turn the smoke alarm counterclockwise to remove it from the mounting bracket.



## Recycling and disposal



The WEEE symbol means that this product and batteries must be disposed separately from other a household waste. When they reach their end of life, take them to a designated waste collection point in your area to guarantee a safe disposal or recycling. Protect the environment, human health and natural resources! Membership in eco-organization Ecologic.

## Service

Customer service: [support@meross.com](mailto:support@meross.com)

The CE mark affixed to this product confirms its compliance with the European Directives which apply to the product and, in particular, its compliance with the harmonized specifications of standard EN 14604:2005 relating to Construction Products Regulation 305/2011.

## Product Specifications

Detection method:	Optical sensor
Power supply:	Sealed battery (8V DC)
Battery lifetime:	10 years
Alarm volume:	> 85 dB(A) at 3 meters
Alarm sensitivity:	0.105 – 0.155 dB/m
Monitored area:	40m <sup>2</sup>
Operating temperature:	000°C-40 °C
Operating humidity:	<93%
Date of replacement :	See product label
Individual alarm indicator:	Yes
Alarm silence facility:	Yes  Hush time: 10 minutes
Low battery warning:	Yes
Low battery silence facility:	Yes   Hush time: 10 hours
Installation in leisure accommodation vehicles:	
	Yes
Mounting location:	Ceiling or wall
Interconnectable:	No

## Warranty

Meross products are covered by a 36 months limited warranty from the date of its original purchase. If any problems occur, please contact [support@meross.com](mailto:support@meross.com) for help.

We can only provide aftersales service for products that are sold by Meross or Meross authorized retailers and distributors.

## Disclaimer

This manual is for reference only. As specific functions and product image may differ slightly from what they are, the physical product shall prevail.

### SIMPLE DEVICE SIMPLIFY YOUR LIFE

Email: [support@meross.com](mailto:support@meross.com)

Website: [www.meross.com](http://www.meross.com)

Manufacturer: Siterwell Electronics CO., Limited

Address: No. 666 Qingfeng Road, Jiangbei District, Ningbo, Zhejiang Province, China, 315034

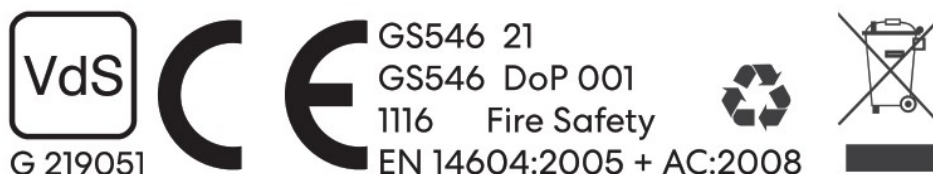
**UK AR**

CET PRODUCT SERVICE LTD. (for authorities only)

Chase Business Centre, 39-41 Chase Side London N14 5BP UK

**MADE IN CHINA INDOOR USE ONLY**







This manual is for reference only. As specific functions and product image may differ slightly from what they are, the physical product shall prevail.

#### ESSENTIAL CHARACTERISTICS: PASSED

Nominal activation conditions/ Sensitivity, Response delay (response time) and Performance under fire condition – Operational reliability – Tolerance to supply voltage – Durability of operational reliability and response delay, temperature resistance, vibration resistance, humidity resistance, corrosion resistance, electrical stability  
Download the Declaration of Performance at [www.meross.com](http://www.meross.com)

## Documents / Resources

  	<a href="#">meross EN14604 Interlinked Smart Smoke Alarm</a> [pdf] User Manual EN14604, 91Qho2oHTAL, 6102000341-210225-GS546 UK -QIG, EN14604 Interlinked Smart S moke Alarm, Interlinked Smart Smoke Alarm, Smart Smoke Alarm, Smoke Alarm, Alarm
--	--

## References

- [User Manual](#)