

meross
CS11 Detector



meross CS11 Detector User Manual

[Home](#) » [Meross](#) » meross CS11 Detector User Manual 

Contents

- 1 meross CS11 Detector
- 2 Product Size
- 3 Product Specifications
- 4 Packing List
- 5 Installation Instructions
- 6 Activity, Test, and Operation
- 7 What You Need to Know About CO
- 8 What To Do When the Alarm Sounds
- 9 Maintenance and Cleaning
- 10 Troubleshooting
- 11 Declaration of Conformity
- 12 Warranty Information
- 13 CUSTOMER SUPPORT
- 14 ABOUT COMPANY
- 15 Documents / Resources
 - 15.1 References
- 16 Related Posts

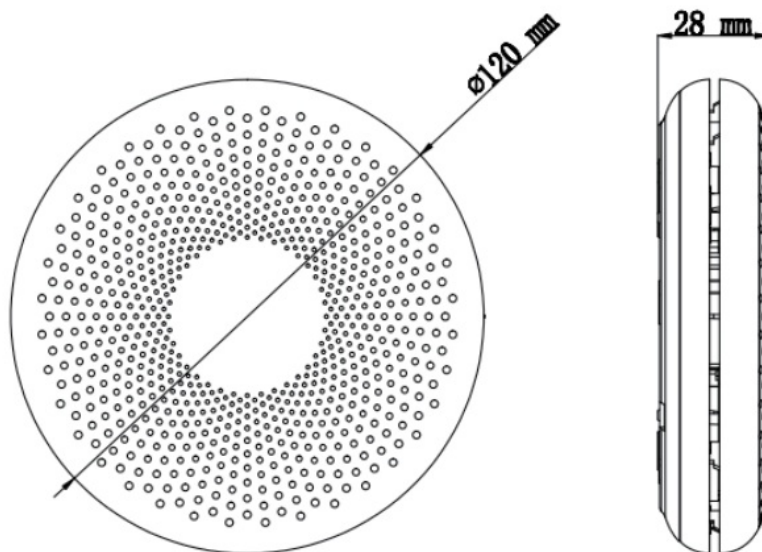
meross

meross CS11 Detector



Thank you for purchasing our smoke and carbon monoxide combination alarm device. This model features a non-replaceable, sealed-in battery. Please read this manual carefully to ensure proper use and store it in a safe place for future reference.

Product Size



Product Specifications

- **Power:** DC 3V, Lithium Battery (CR123A, 1600mAh, sealed in)
- **Operation Current:** <30uA (standby); <70mA (alarm)
- **Alarm Volume:** >85 dB(A) at 3 meters
- **Sensor of Smoke:** Photoelectric
- **Smoke Sensitivity:** 0.09-0.17 dB/m
- **Sensor of CO:** Electrochemical, 10 years lifetime
- **CO Sensitivity:** 50ppm 60-90min, 100ppm 10-40min, 300ppm 1-3min
- **Low Battery:** $2.6 \pm 0.1V$

- **Silence Time:** approx. 10 minutes
- **Operating Temperature:** -10°C – 40°C
- **Humidity Range:** 15% – 95% R.H. (non-condensing)
- **Standard:** EN14604: 2005/AC: 2008 & EN50291-1: 2018

Packing List

- 1 x Combo Smoke and Carbon Monoxide Alarm
- 1 x Mounting Bracket
- 1 x Screw Kit
- 1 x User Manual

Installation Instructions

Where to install

1. At first you should install an alarm in the bedroom and walkway. If there are several bedrooms in the house, please install an alarm in every bedroom.
2. Install an alarm in every room where electrical appliances are operated (i.e. portable heaters or humidifiers).
3. Smoke, heat and burning things will spread horizontally after rising to the ceiling, so install the alarm in middle of the ceiling.
4. If the alarm can not be installed in the middle of the ceiling, install it keeping 300mm away from the corners. (see the figure 1).
5. If the alarm is installed in the wall, it should keep 100mm away from the ceiling.
6. If the length of the room or the hall is beyond 30 foot, you need to install several alarms there.
7. When the wall or ceiling is slanting, the alarm needs to be installed minimum 500mm away from the highest wall or ceiling point in the room (see the figure 2).

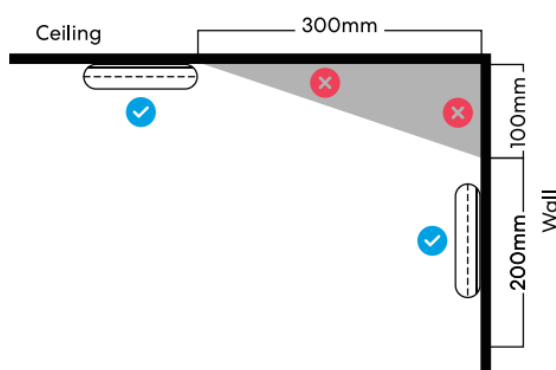


Figure 1

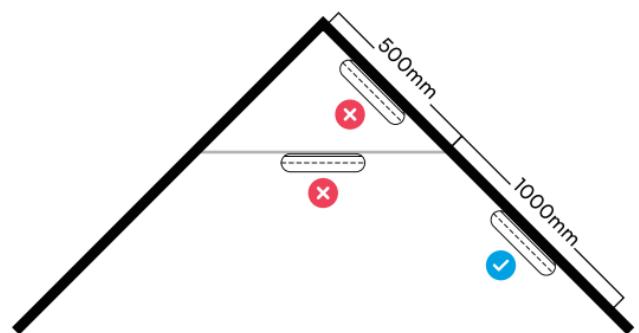
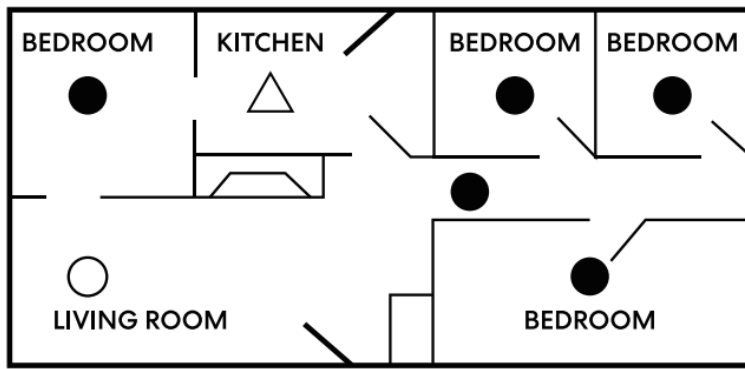
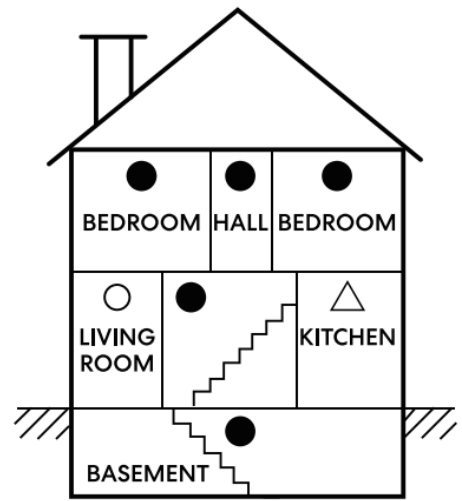


Figure 2



- Smoke Alarms for Required Detection
- Smoke Alarms for Additional Detection
- △ Not within 6 feet of appliances

SINGLE FLOOR PLAN



MULTIPLE FLOOR PLAN

Figure 3

Locations to Avoid

1. High-humidity areas such as kitchens, and bathrooms;
2. Next to air outlets, fans and central heating;
3. Dusty, dirty areas or areas with insects;
4. High-temperature and easily polluted places;
5. Places with difficult access, making it difficult to operate the test function;
6. Within 1.5m from lamps;
7. Next to doors or windows;
8. In the top of rooms with sloping roofs. the corner of the room or other dead-air spaces.

Mounting Alarms

1. Twist off the mounting bracket from the alarm.
2. Put the bracket on the installation position and mark the screw holes on the ceiling or the wall.
3. Drill two mounting holes in the marked place by an electric drill (The diameter of the drill hole is 5mm) and insert two plastic anchor plugs by hammer.
4. Screw the mounting bracket to the ceiling or the wall (Refer to figure 4).
5. Attach the alarm to the mounting bracket and turn clockwise to lock the alarm .

WARNING: The installation instructions must be followed strictly in case of any injury. The device should be installed by a competent person .

WARNING: CO Alarm should not be used as a substitute for proper installation, use and maintenance of fuel-burning appliances. including appropriate ventilation and exhaust systems

WARNING: The apparatus should be installed by a competent person.

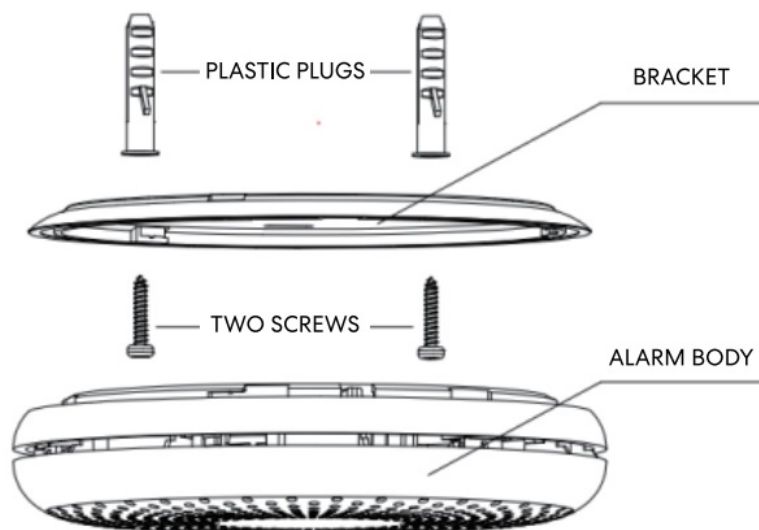


Figure 4

Activity, Test, and Operation

How to Power up & off the Device

- The device is turned off by default before leaving the factory, Before the device can be used normally, the product must be activated.
- Use a screwdriver or other suitable tools to turn the switch to the ON position, the product switch can work normally. Turn the switch to the OFF position, the product will shut down.

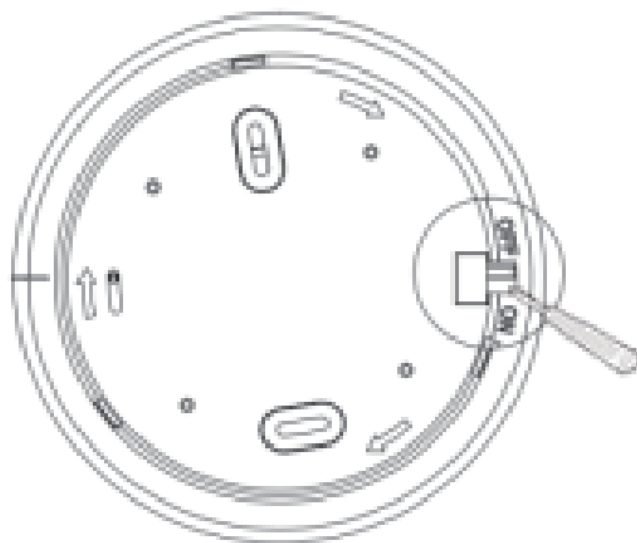


Figure 5

Test your Alarm

Test the unit to ensure proper operation by pressing the cover, the alarm will sound if the unit are working well. If no sound, you can refer to "Trouble shooting" section for solution.

WARNING:

1. Do not test your alarm using an open flame. This may damage the smoke alarm, or ignite combustible materials and start a structural fire.
2. Do not stand close to the alarm when the alarm is sounding. Exposure at close range may be harmful to your hearing, so step away when testing.
3. Weekly Test: test this smoke alarm once a week.

LED Indicators

Mode	LED Indicator	Audible Alarm	Remark
Power on	Red/Amber/Green LED 1 flash	1 beep	
Standby Mode	Green LED 1 flash per 56 sec	None	
Alarm Mode	Red LED 3 flash per 3 sec	3 beeps per 3 sec	Smoke Alarm
	Red LED 4 flash per 4.4 sec	4 beeps per 4.4 sec	CO Alarm
Test Mode	Red LED flash in time with alarm pattern	3 long beeps, 4 quick beeps cycle 2 times	
Silence Mode	Red LED 1 flash per 8 sec	None	
Low Battery Mode	Amber LED 1 flash per 56 sec	1 beep per 56 sec	
Faulty	Amber LED 2 flash per 40 sec	2 beeps per 40sec	
End of Life	Amber LED 3 flash per 56 sec	3 beeps per 56 sec	

Silence Mode

During the unit is alarming, you can push the test button, it will be paused the unit alarming for approx 10 minutes. The red LED will flash once every 8 seconds, it indicates the smoke alarm device is running into the silence mode. The silence feature is to be used only when a known alarm condition, such as smoke from cooking activates the alarm. The smoke alarm device will automatically reset after approximately 10 minutes, if after this period, particles of combustion are still present, the alarm will sound again.

WARNING: Before using the alarm silence, identify the source of the smoke and be certain a safe condition exists. If there is any question as to the cause of an alarm it should be assumed that the alarm is due to dangerous levels of carbon monoxide and the dwelling should be evacuated.

What You Need to Know About CO

- CO cannot be seen, smelled or tasted and can be fatal. The build-up of CO in the blood is called the carboxyhemoglobin (COHb) level and interferes with the body's ability to supply itself with oxygen. Depending on the concentration, CO can kill in minutes. The most common sources of CO are malfunctioning gas appliance used for heating and cooking, vehicles running in an attached garage, blocked chimneys or flues, portable fuel burning heaters, fireplaces, fuel powered tools and operating a grill in an enclosed space. Indications of carbon monoxide poisoning include symptoms similar to the flu, but with no fever. Other symptoms include dizziness, fatigue, weakness, headache, nausea, vomiting, sleepiness and confusion. Everyone is susceptible to the danger of CO, but experts agree that unborn babies, small children, pregnant women, senior citizens and people with heart or respiratory problems are at the highest risk for serious injury or death. Every year a qualified technician should inspect and clean your heating system, vents, chimney, and flues.
- The following symptoms are related to carbon monoxide poisoning and should be discussed with all members of the household:
 - **Mild exposure:** Slight headache, nausea, vomiting, fatigue.
 - **Medium exposure:** Severe throbbing headache, drowsiness, fast heart rate.

- **Extreme exposure:** Unconsciousness, cardiorespiratory failure, death.
- The above levels of exposure relate to healthy adults. Levels differ for those at high risk. Exposure to high levels of carbon monoxide can be fatal or cause permanent damage and disabilities. Many cases of reported carbon monoxide poisoning indicate that while victims are aware they are not well, they become so disoriented they are unable to save themselves by either exiting the building, or calling for assistance. Also, young children and household pets may be the first affected. Familiarization with the effects of each level is important.

What To Do When the Alarm Sounds

Smoke Alarm

- The smoke alarm pattern is three long beeps with 1.5 second pause, and three long beeps repeating. The red LED blinks in time with the alarm pattern.
- The smoke alarm takes precedence when both smoke and carbon monoxide are present.
 1. Alert small children in the home as well as anyone immediately left the area.
 2. While leaving, feeling the door's surface. If hot. don't open that door! Instead, use your alternate exit. If the door is cool, open it slightly and be ready to slam it shut if heat and smoke rush in.
 3. If the escape route requires you to go through smoke, stay close to the floor where the air is cleaner. Crawl if necessary, and breathe shallowly through a cloth, wet if possible.
 4. Call the fire department from your cell phone outside, or from your neighbor's home-not from yours!
 5. Don't return to your home until the fire officials say that it is all right to do so.

CO alarm

WARNING:

Actuation of your CO Alarm indicates the presence of carbon monoxide (CO) which can KILL YOU. If an alarm signal sounds:

1. Operate reset/ Silence button (only operational at concentrations <250ppm).
2. Call your local Fire Department.
3. Immediately move to fresh air – outdoors or by an open door / window. Do a head count to ensure that all persons are accounted for. DO NOT re-enter the premises until the first responders have arrived, the premises have been aired out and your Alarm returns to its normal condition.
4. After following steps 1-3, if your Alarm reactivates within a 24 hour period, repeat steps 1- 3 and call a qualified appliance technician to investigate for sources of CO from fuel burning equipment and appliances. and inspect for proper operation of this equipment.

Note: When ventilation is provided by leaving the window and doors open, the CO build up may have dissipated by the time help arrives and the Alarm may have stopped sounding. Although your problem may appear temporarily solved it is crucial that the source of the CO is determined and appropriate repairs made.

Maintenance and Cleaning

There are a few simple steps you need do to keep it working properly.

1. Test the alarm once a week.
2. Do not paint the alarm. Paint will seal the vents and interfere with the sensor's ability to detect smoke.

3. Never attempt to disassemble the alarm to clean inside. This could damage the alarm.
4. Ensure there are a list of commonly occurring materials, vapours or gases, which may affect the reliability of the apparatus in the short or long term:
 - Ethylene, ethanol, alcohol, iso-propanol, benzene, toluene, ethyl acetate, hydrogen, hydrogen sulfide and sulfur dioxide.
 - Also most aerosol sprays, alcohol based products, paint, thinner, solvent, adhesive, hair spray, after shave, perfume, auto exhaust (cold start) and some cleaning agents.

Clean the alarm at least once a month to remove dust. dirt. or debris. Use a vacuum cleaner with the soft brush. vacuum all sides and covers of smoke alarm device.

If there is a defective battery or other failures, you can refer to 11 Trouble shooting11 for solution, if there are still failures during warranty, you can return to your retailer.

 - **WARNING:** For the model which used lithium battery (included). the battery service life over 10 years, no need to replace the battery. The battery is sealed in cover and not replaceable, DO NOT TRY TO REPLACE THE BATTERY .
 - **WARNING:** Constant exposures to high or low temperatures or high humidity may reduce battery life .
 - **WARNING:** This device is not designed to protect individuals from acute effects of carbon monoxide exposure. It may not fully safeguard individuals with specific medical conditions. If in doubt, consult a medical practitioner.

TroubleShooting

Problem	Method of dispose l
The alarm does not sound when testing.	Please check whether the switch be turned to ON position.
Amber LED flashes and the alarm delivers one beep every 56 seconds.	The battery is low. Please replace the batteries as soon as possible.
Amber LED flashes twice and the alarm delivers one 2 beeps every 40 seconds.	1. Clean the alarm. Please refer to the “maintenance and cleaning” section. 2. The alarm is malfunctioning. Contact the retailer to replace it.
The alarm amber LED 3 flash and delivers one 3 beeps every 56 seconds.	The alarm’s expected service life is tenyears, the maximum lifetime reached. Please replace the alarms as soon as possible.
Nuisance alarms triggered intermittently or when residents are cooking, taking showers, etc.	1. Press silence button. 2. Clean the alarm. Please refer to the “maintenance and cleaning” section. 3. Move the alarm to new location.

Declaration of Conformity

Meross hereby declares that the device is in compliance with essential requirements and other relevant provisions of directives 2014/30/EU & Construction Products Regulation 305/2011. The original EU Declaration of Conformity

may be at <https://www.meross.com/support/eudoc>.

Warranty Information

- Purchase each new smoke and carbon monoxide alarm device to be free from defects in material and workmanship under normal use and service for a period of 3 years from the date of purchase. During the specified warranty period, we will repair or replace, at its discretion any defective Smoke Alarms. Please include your name, address and phone number along with a brief description of what is wrong with the unit. Damage from neglect, abuse or failure to adhere to any of the enclosed instructions will result in termination of the warranty, and the unit will not be replaced or repaired.
- This warranty shall not apply to the alarm if it has been damaged, modified, abused or altered after the date of purchase or if it fails to operate due to improper maintenance. The Manufacturer shall have no liability for any personal injury, property damage or any special, incidental, contingent or consequential damage of any kind resulting from gas leakage, smoke, fire or explosion.

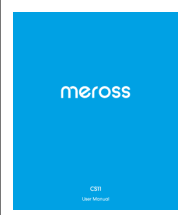
CUSTOMER SUPPORT

- **Email:** support@meross.com
- **Website:** www.meross.com

ABOUT COMPANY

- **Manufacturer:** Shenzhen Fire Security Technology Co., LTD.
- **Address:** Room 101, No.I, 8th Road, Yangyong Industrial Zone, Shapu Community, Songgang Street, Baoan District, Shenzhen, China
- **Supervisor:** Chengdu Meross Technology Co., Ltd.
- **Address:** Floor 3, Building A5, Shijicheng Road No 1129, Gooxin, Free Trade Trial Zone, Chengdu, Sichuan, China.
- PRODUCT SERVICE SP. Z 0.0.(for authorities only)
- Ul. Długa 33 102, 95-100 Zgierz Polen
- **Email:** info@cetproduct.com
- PRODUCT SERVICE LTD. (for authorities only)
- Beacon House Stokenchurch Business Park.
- Ibstone Rd, Stokenchurch High Wycombe HP14 3FE UK

Documents / Resources

	meross CS11 Detector [pdf] User Manual 6102000583, 240614, CS11 Detector, CS11, Detector
---	---

References

- [User Manual](#)

[Manuals+](#), [Privacy Policy](#)

This website is an independent publication and is neither affiliated with nor endorsed by any of the trademark owners. The "Bluetooth®" word mark and logos are registered trademarks owned by Bluetooth SIG, Inc. The "Wi-Fi®" word mark and logos are registered trademarks owned by the Wi-Fi Alliance. Any use of these marks on this website does not imply any affiliation with or endorsement.