



# MERIDIAN Locker Admin Demo Software Instructions

[Home](#) » [MERIDIAN](#) » MERIDIAN Locker Admin Demo Software Instructions 

- Contents
- 1 [MERIDIAN Locker Admin Demo Software](#)
  - 2 [Locker Admin](#)
  - 3 [Documents / Resources](#)
  - 4 [Related Posts](#)

## MERIDIAN

### MERIDIAN Locker Admin Demo Software



The Locker System is a software-based solution that allows users to manage and maintain lockers efficiently. It provides administrative functions and features for system maintenance and locker usage. The product is developed by Meridian, a company known for its commitment to quality and certification. Meridian controls the entire process, from concept to completion, ensuring high-quality design, cost-effectiveness, and adherence to timelines. The product is designed to meet ISO 900 standards, and many of its components can be UL-listed through UL self-certification.

## Product Usage Instructions

1. To access the Locker Admin, follow these steps:
  - On the first screen after the attract screen, click the stacked menu icon (hamburger button) located in the top right corner. If the icon is not present, click the upper left corner of the screen and then the right.
  - Enter the administrative PIN when prompted. The default PIN is 7777.
2. After entering the administrative PIN, a screen will display all available administrative functions. Select "System Maintenance" and then choose "Exit to Desktop".
3. To open File Explorer:
  - Double-click "This PC" on the left side of File Explorer.
  - Navigate to "Local Disk (C:) > Kingnet > mzcreatejs-00.10.05 > mzcreatejs > demo.html"
4. In the opened window, check the top for the current connection state. Wait until it shows "connected".
5. You can also view the state of all enabled devices and services by clicking the "Report System State" button under the System heading at the top of the page.
6. Scroll down until you see the locker heading. You will find all the functions associated with locker usage there.
7. To return to the zero browser, you have two options:
  - Restart the PC.
  - Double-click the zero-browser shortcut on the desktop. Note that when opening from the desktop, the Windows taskbar may be visible at the bottom of the screen.
  - The shortcuts for accessing the admin login may not work in this case. To exit the browser, close it from the taskbar or through the task manager.

For further assistance or inquiries, you can contact Meridian's corporate headquarters at:

312 S. Pine Street, Aberdeen, NC 28315

+1 866-454-6757

[Sales@mzero.com](mailto:Sales@mzero.com)

[Meridiankiosks.com](http://Meridiankiosks.com)

## Locker Admin

Meridian Kiosks | 312 S Pine Street, Aberdeen, North Carolina 28315 | [MeridianKiosks.com](http://MeridianKiosks.com) While the images are from our locker software, the process for exiting the desktop from the zero browser is the same.

1. To access the Locker Admin, press the stacked menu icon (hamburger button) in the top right corner of the first screen, following the attract screen. If the stack menu icon is not present, click (or press if it is a touchscreen) the upper left corner of the screen and then the right.



2. A screen will appear asking for the administrative PIN. The default PIN is 7777.



3. After the administrative PIN is entered, the next screen shows all the administrative functions available within the locker software.

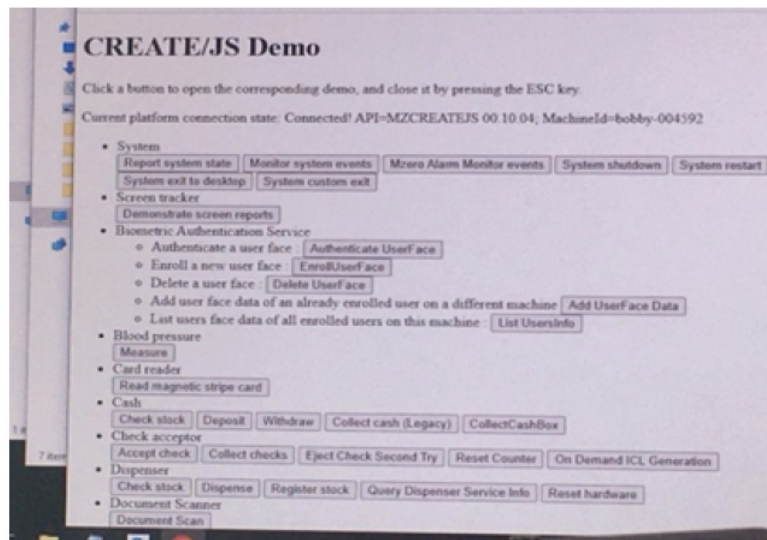


4. Select System Maintenance and then exit to desktop.

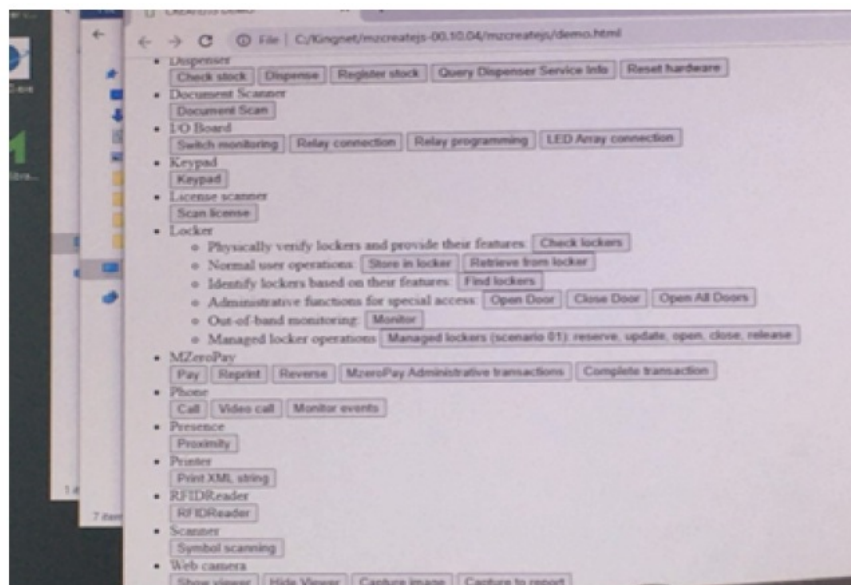


5. Open File Explorer. On the left side of File Explorer double-click This PC.

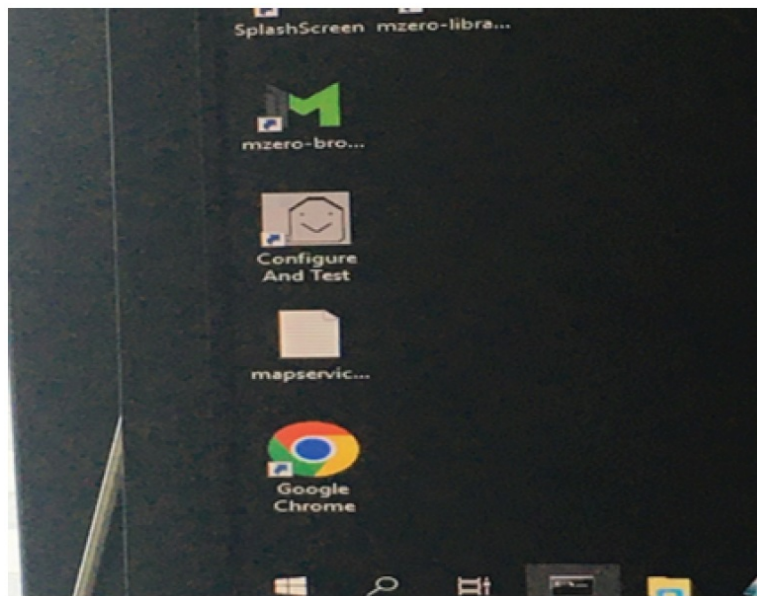




8. Scroll down the window until you see the locker heading. From there you will find all the functions associated with locker usage.



9. To get back to the zero browser, you can either restart the PC or double-click the zero-browser shortcut on the desktop.
10. Keep in mind that when the browser is opened from the desktop the Windows taskbar may be visible at the bottom of the screen once the browser opens and that the shortcuts for accessing the admin login may not work. This only occurs when opening from the desktop and the browser can be exited out by closing it from the taskbar or through the task manager.



### Corporate Headquarters

312 S. Pine Street,  
Aberdeen, NC 28315  
+1 866-454-6757

[Sales@mzero.com](mailto:Sales@mzero.com)  
[Meridiankiosks.com](http://Meridiankiosks.com)

### Documents / Resources

	<p><a href="#">MERIDIAN Locker Admin Demo Software</a> [pdf] Instructions Locker Admin Demo Software, Locker, Admin Demo Software, Demo Software, Software</p>
--	--

Manuals+.