



# Mercury EFI SmartCraft Gauges Installation Guide

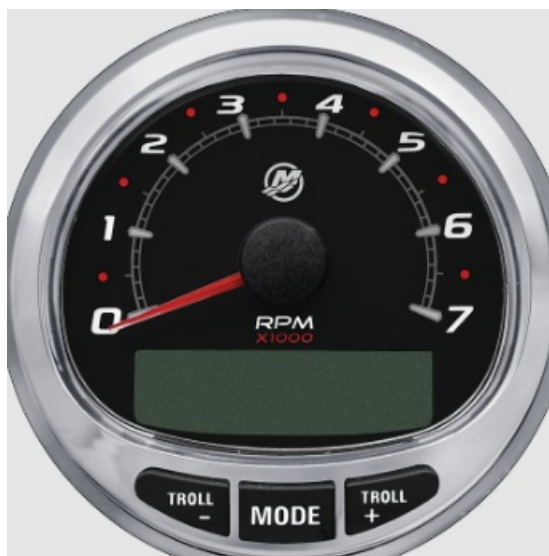
[Home](#) » [Mercury](#) » Mercury EFI SmartCraft Gauges Installation Guide 

## Contents

- 1 [Mercury EFI SmartCraft Gauges](#)
- 2 [Wiring for SmartCraft Gauges – EFI Models](#)
- 3 [Typical SmartCraft Installation Configurations – EFI Models](#)
- 4 [Dual Engine Applications](#)
- 5 [Instrument/Lanyard Stop Switch Wiring Diagram \(Dual Outboard\)](#)
- 6 [Documents / Resources](#)
  - 6.1 [References](#)
- 7 [Related Posts](#)

## Mercury

### Mercury EFI SmartCraft Gauges



### Product Specifications

- Model Number: 90-883065
- Release Date: April 2001
- Compatible with: Outboard Motors
- Wiring Harness Length: 20 or 30 ft.
- Monitor Type: System Monitor Tachometer

## Product Usage Instructions

### Outboard Motor Installation

**To install the outboard motor, follow the steps below:**

1. Cutout the harness opening in the front rubber grommet.
2. Route the SmartCraft wiring harness into the bottom cowl.
3. Connect the SmartCraft wiring harness as shown below:

### Frequently Asked Questions (FAQ)

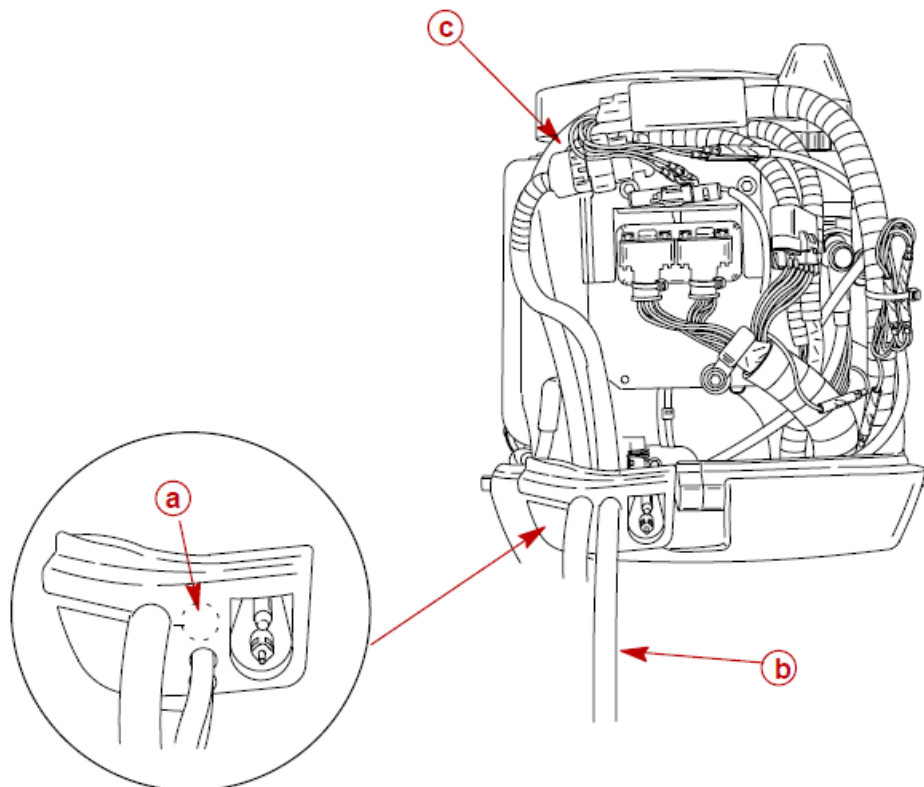
**Q: What should I do if I encounter difficulties during the wiring harness connection?**

A: If you face challenges during the wiring harness connection process, refer to the installation manual for detailed diagrams and instructions. You can also contact our customer support for assistance.

## Wiring for SmartCraft Gauges – EFI Models

### SmartCraft Wiring Harness Connection to the Engine

1. Cutout the harness opening in the front rubber grommet.
2. Route the SmartCraft wiring harness into the bottom cowl and connect as shown.

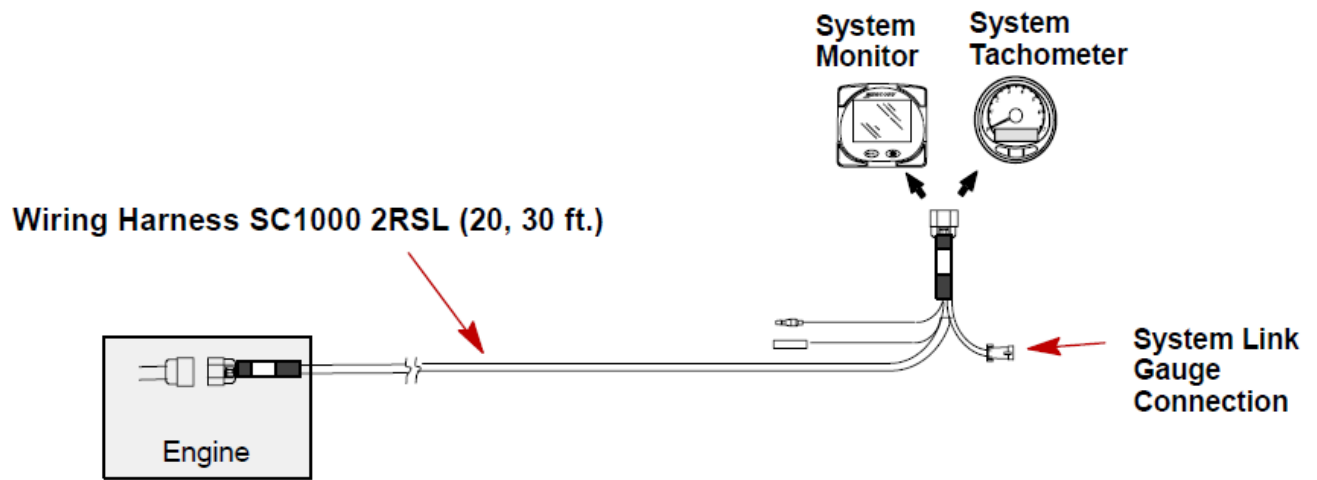


- Front Rubber Grommet – Cutout Harness Opening
- SmartCraft Harness

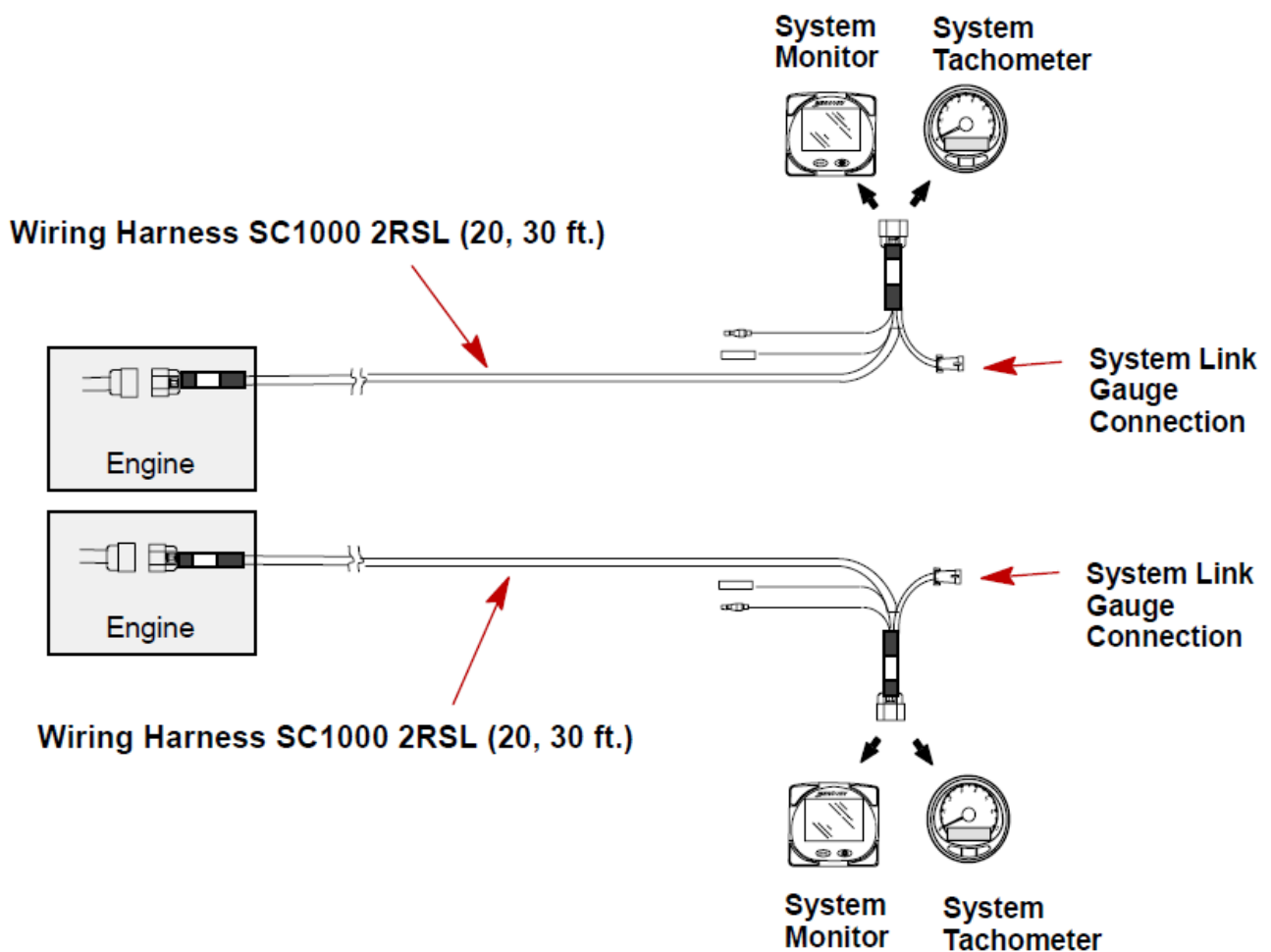
- Connection for SmartCraft Harness

## Typical SmartCraft Installation Configurations – EFI Models

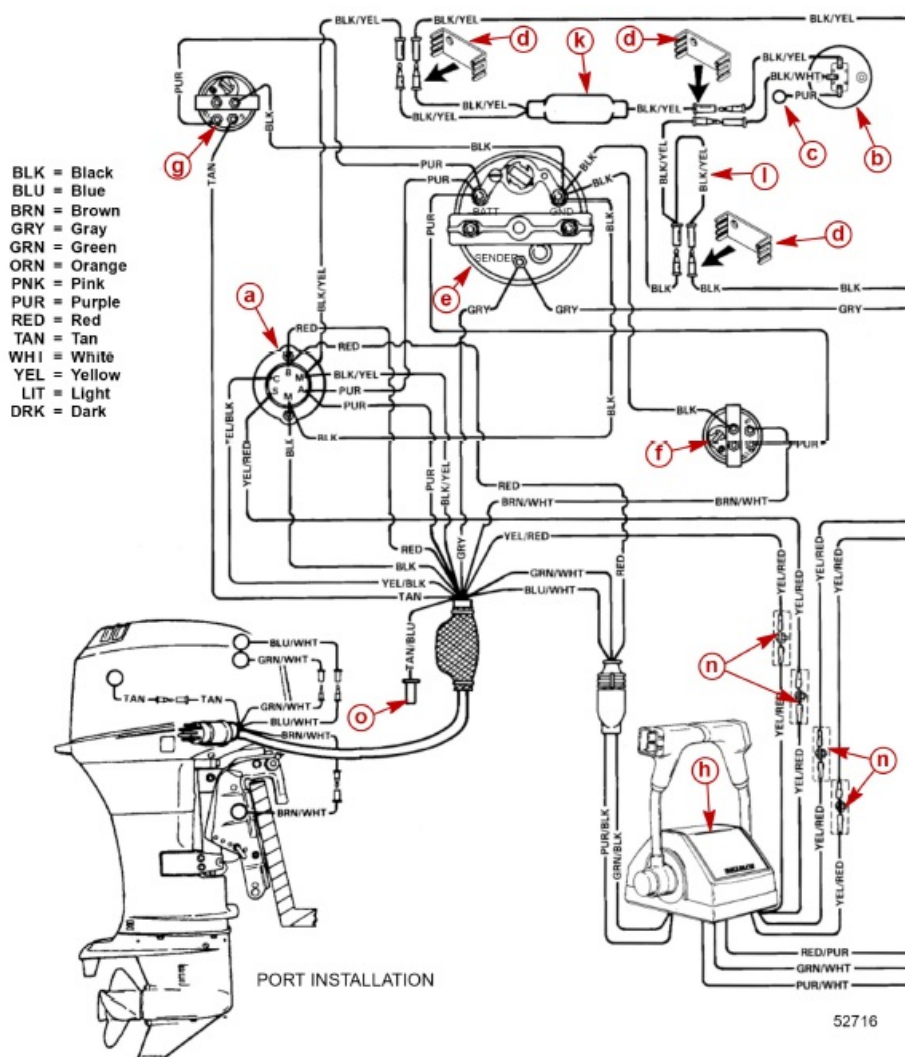
### Single Engine Applications



### Dual Engine Applications

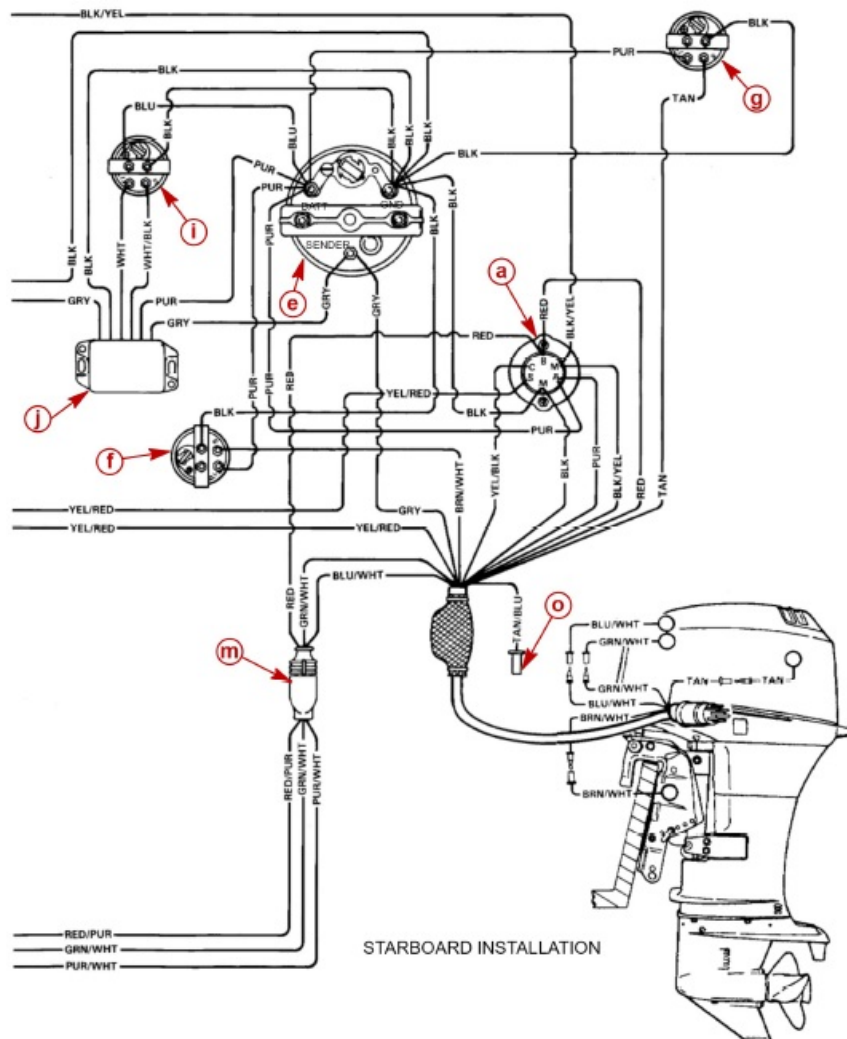


### Instrument/Lanyard Stop Switch Wiring Diagram (Dual Outboard)



- a – Ignition/Choke Switch
- b – Lanyard Stop Switch
- c – Lead Not Used on Outboard Installations
- d – Retainer
- e – Tachometer
- f – Trim Indicator Gauge
- g – Temperature Gauge
- h – Remote Control
- l- Synchronizer Gauge
- j – Synchronizer Box

**IMPORTANT:** On installations where gauge options will not be used, tape back and isolate any unused wiring harness leads.



5265

- k – Lanyard/Diode
- l – “Y” Harness
- m – Power Trim Harness Connector
- n – Connect Wires Together with Screw and Hex Nut (4 Places );Apply Quicksilver Liquid Neopreneto Connections and Slide Rubber Sleeve over Each Connection.
- o – Lead to Visual Warning Kit

## Documents / Resources

	<p><a href="#">Mercury EFI SmartCraft Gauges</a> [pdf] Installation Guide 50 EFI, 40, 50, EFI SmartCraft Gauges, EFI, SmartCraft Gauges, Gauges</p>
---	---

## References

- [User Manual](#)

This website is an independent publication and is neither affiliated with nor endorsed by any of the trademark owners. The "Bluetooth®" word mark and logos are registered trademarks owned by Bluetooth SIG, Inc. The "Wi-Fi®" word mark and logos are registered trademarks owned by the Wi-Fi Alliance. Any use of these marks on this website does not imply any affiliation with or endorsement.