



MERCURY 2ASXFM2 GravaStar M2 Wireless Gaming Mouse User Manual

[Home](#) » [Mercury](#) » MERCURY 2ASXFM2 GravaStar M2 Wireless Gaming Mouse User Manual 

Contents

- 1 MERCURY 2ASXFM2 GravaStar M2 Wireless Gaming Mouse User Manual
- 2 Product Information
 - 2.1 Specifications
- 3 WHAT'S INSIDE
- 4 BUTTONS
- 5 GETTING STARTED
- 6 Charging Indicator
- 7 Product Usage Instructions
- 8 Warranty
- 9 FCC Requirement
- 10 GravaStar Family
- 11 Frequently Asked Questions (FAQ)
- 12 Documents / Resources
 - 12.1 References

MERCURY

MERCURY 2ASXFM2 GravaStar M2 Wireless Gaming Mouse User Manual



Product Information

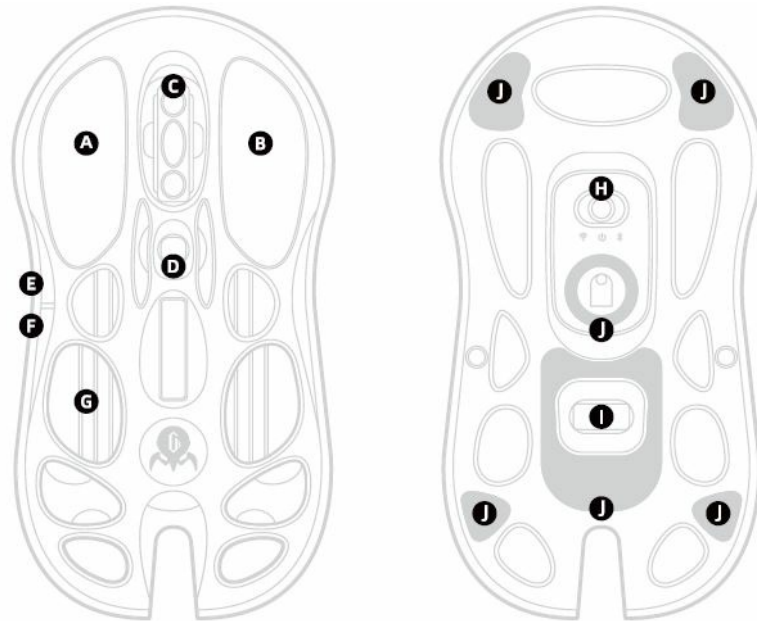
Specifications

- Model: SBWB4UBS.FSDVSZ.8JSFMFTT(BNJOH.PVTF
- FCC Compliance: Part 15 of the FCC Rules
- Product Name : GravaStar Mercury M2 Wireless Gaming Mouse
- Model: GravaStar M2
- TECHNICAL SPECIFICATIONS: LIGHTSPEED wireless technology/LIGHTSYNC RGB lighting/ON-BOARD MEMORY PROFILES Magnesium alloy shell/Exoskeleton Design/PTFE Feet
- Sensor: PAW3395DM
- Master Control : BKCX52850
- Resolution: 26000DPI
- Max Speed {IPS} : 650
- Max Acceleration : SOG
- USB Rept : 1 K Hz{2.4G}
- Bluetooth Version: V53
- Input: SV-350mA
- Battery capacity: 300mAh
- Charging port : Type-C
- Net Weight{Mouse Only} : 79g
- Product Dimension: 124{L}*64.S(W)*39.S(H)mm
- System Compatibility: Windows/Mac/iOS/ Android

"The above specifications are for reference only; and the manufacturer reserves the right to optimize and modify product specifications without prior notice.

WHAT'S INSIDE

- Left mouse button
- Right mouse button
- scroll wheel
- DPI switch
- Mouse button
- Mouse button
- Ambient light
- Wireless/PowerOff/Bluetooth
- Wireless USB dongle compartment
- Teflon foot pad



USBWirelessReceiver&A/CAdapler



2.1 meters Ccillble (Charging + Data Transfer)



“The illustrations in the manual are for reference purposes only the actual product may vary. The data mentioned in the manual is sourced from GravaStar; please refer to the actual usage for accurate information.”

BUTTONS

Left-click: Single click

Right-click: Single click

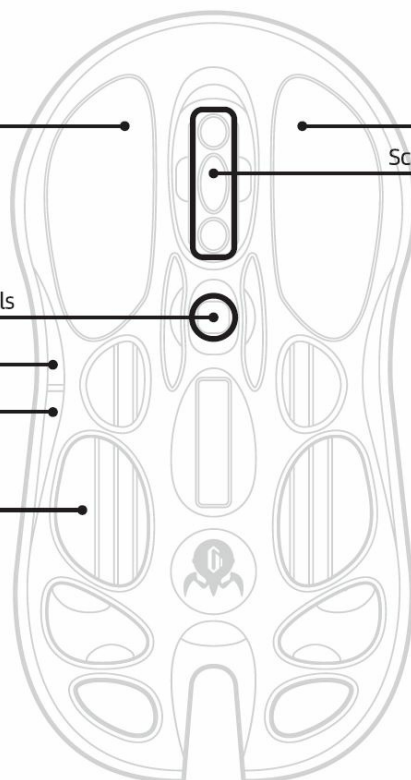
Scroll wheel: Single click / Scroll up and down

DPI button: Cycle through sensitivity levels

Mouse button

Mouse button

Ambient light



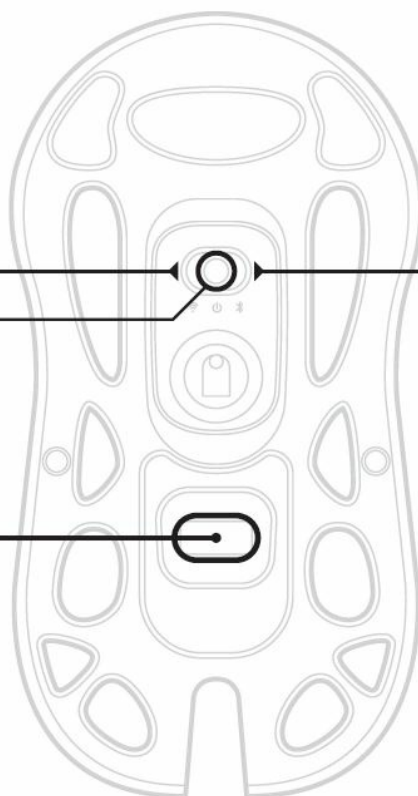
Front Button Descriptions

Slide to Left: 2.4G Mode

Slide to Right: Bluetooth Mode

Stay in the middle: Power ON/OFF

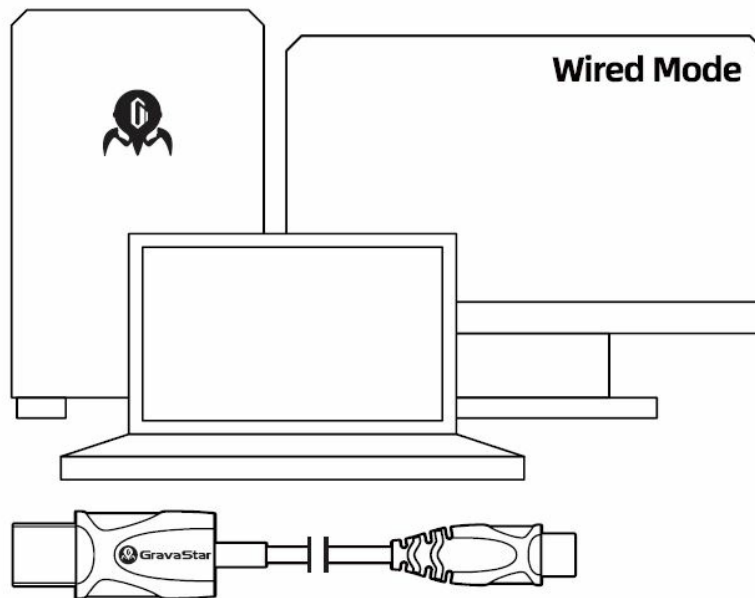
Wireless USB dongle compartment



Back Button Descriptions

GETTING STARTED

Connect the mouse to the computer using the charging cable into any USB port, and you can use the mouse in wired mode. Connect the USB wireless receiver to the computer. Use the mode switch button and slide it to the left for 2.4G mode.



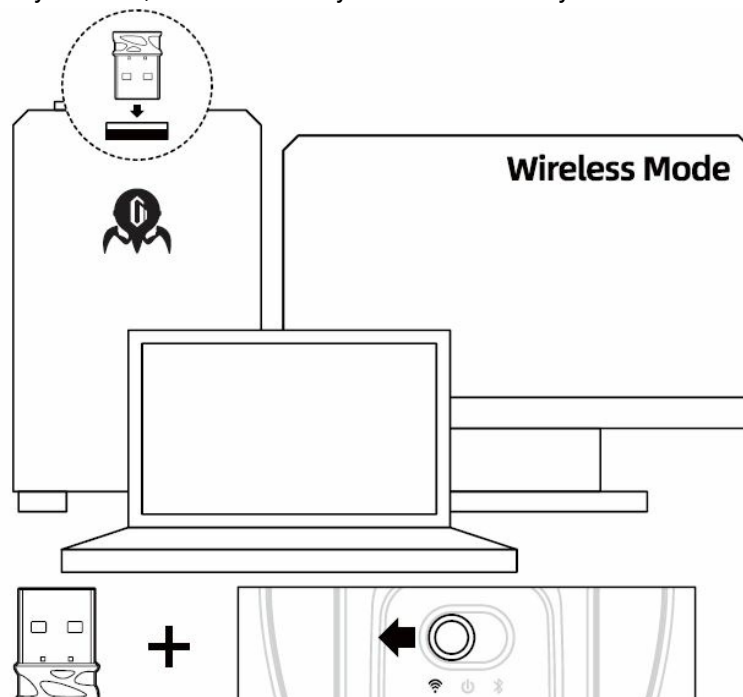
Connection: Slide the switch on the bottom to the left for wireless mode Insert the 1K Receiver into the computer's USB port and you can start to use the mouse. If you want to connect with the 4K Receiver, simultaneously press the left, centre, and right buttons for 3 seconds on the Receiver. The blue light will slowly flash once every 1 second for 20 seconds.

Bluetooth Connection: Bluetooth Connection: Slide the switch on the bottom to the right for Bluetooth mode. The blue light of Bluetooth will flash twice every second. You can find the device name "Gravastar M2" in your Bluetooth device list.

Wired Connection: YConnect the mouse with the cable. The Wired mode takes priority over other connections (2.4G/Bluetooth modes will be automatically turned off).

Low battery warning: Low battery warning: Battery level is lower than 20%,

Red light flashes twice every second; b. Automatically enters low battery mode and the light turns off.



Charging Indicator

- 0% Red color
- ≤30% Red color
- >30% Green color with a breathing effect
- 100% battery
- Charging by computer: Ambient light mode
- Charging by power adaptor: Green light stays on

Download the mouse driver online at <https://www.gravastar.com/> to unlock all the features of it. Please note that the device can still function normally without the driver, but for a better experience with additional customization options, it's recommended to use the driver.

Customize your mouse through the driver

- Configuration Function Memory: Save preset configurations for selective switching.
- Button Customization: Customize all buttons except the left-click.
- DPI Levels/Report Rate Customization: Edit DPI levels and report rates as desired.
- Mode Selection: Choose from three performance modes – HP (High Performance), LP (Low Performance), and Corded – suitable for different usage scenarios.
- 30-Minute I-on I-aside: diviate Sule one mole tor 30 mit is Ripe control: contrple effects /
- Linear Correction / Built-in smoothing correction algorithm.
- Light Customization

Product Usage Instructions

Important Notice – FCC Requirement

Changes or modifications not expressly approved by the party responsible for compliance could void the user's authority to operate the equipment. This device complies with Part 15 of the FCC Rules.

Operation is subject to the following two conditions:

1. This device may not cause harmful interference.
2. This device must accept any interference received, including interference that may cause undesired operation.

Warranty

One-year warranty.

Within the warranty period of the product, if any malfunctions are due to the product's own quality, users can contact the retailer with purchase receipt to receive free repair services.

These will not be covered by warranty:

- Damage caused by self-disassembly.
- Malfunctions or damage resulting from water exposure, drops, or deliberate mechanical damage.
- Malfunctions or damage caused by force majeure events.

FCC Requirement

changes or modifications not expressly approved by the party responsible for compliance could void the user's authority to operate the equipment. This device complies with Part 15 of the FCC Rules.

Operation is subject to the following two conditions:

1. this device may not cause harmful interference, and
2. this device must accept any interference received, including interference that may cause undesired operation.

Note: This equipment has been tested and found to comply with the limits for a Class B digital device pursuant to Part 15 of the FCC Rules. These limits are designed to provide reasonable protection against harmful interference in a residential installation. This equipment generates, uses, and can radiate radio frequency energy, and if not installed and used in accordance with the instructions, may cause harmful interference to radio communications. However, there is no guarantee that interference will not occur in a particular installation. If this equipment does cause harmful interference to radio or television reception, which can be determined by turning the equipment off and on, the user is encouraged to try to correct the interference by one or more of the following measures:

- Reorient or relocate the receiving antenna.
- Increase the separation between the equipment and receiver.
- Connect the equipment into an outlet on a circuit different from that to which the receiver is connected.
- Consult the dealer or an experienced radio/TV technician for help.

GravaStar Family

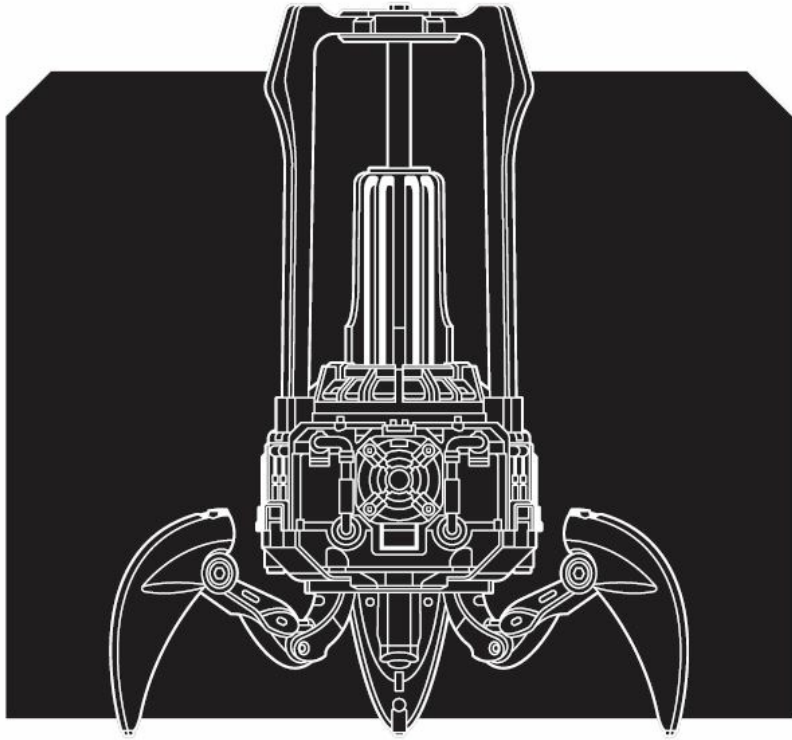
Mars Pro

Sci-fi Designed Bluetooth Speaker G1 Zinc Alloy Shell / Dual 20W Speakers Dynamic Light Effects / Handcrafted Collectible-level Painting Supports Dual Speaker Networking



Supernova

Sci-fi Designed Bluetooth Speaker G5 Sci-fi Transparent Rocket Capsule / 25W Speakers Various RGB Lighting Effects / Biomimetic Tail Spike Handle Supports Dual Speaker Networking



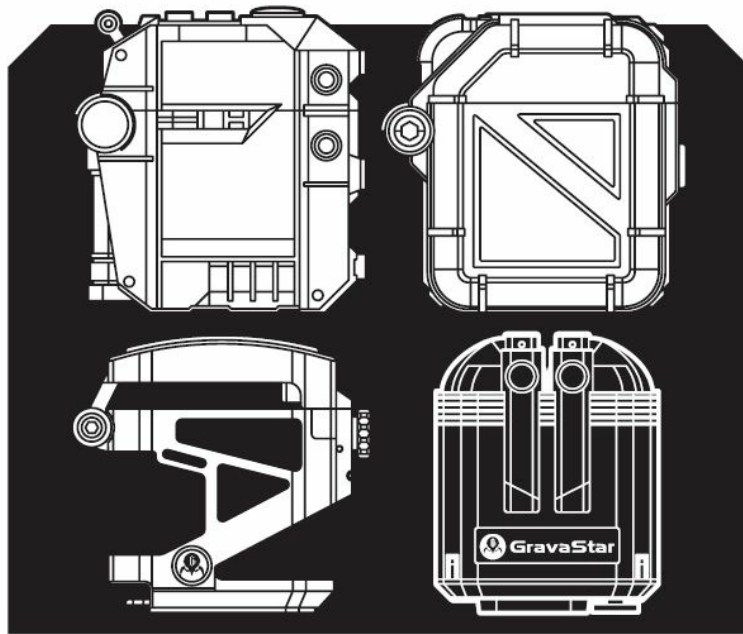
Sirius Pro

Wales armads with Knowles P9 Zinc Alloy / 4+12 Hours of Battery Life ENC Call Noise Cancellation / IPX4 Waterproof Rating Balanced Armature and Composite Diaphraam + Bluetooth 5.2



Sirius P5

Pioneering Wireless Earbuds with Interchangeable case P5 8H+32H Ultra-long Battery Life / ENC Call Noise Cancellation IPX4 Waterproof Rating / High-definition Decoding + Bluetooth 5.2



Alpha65

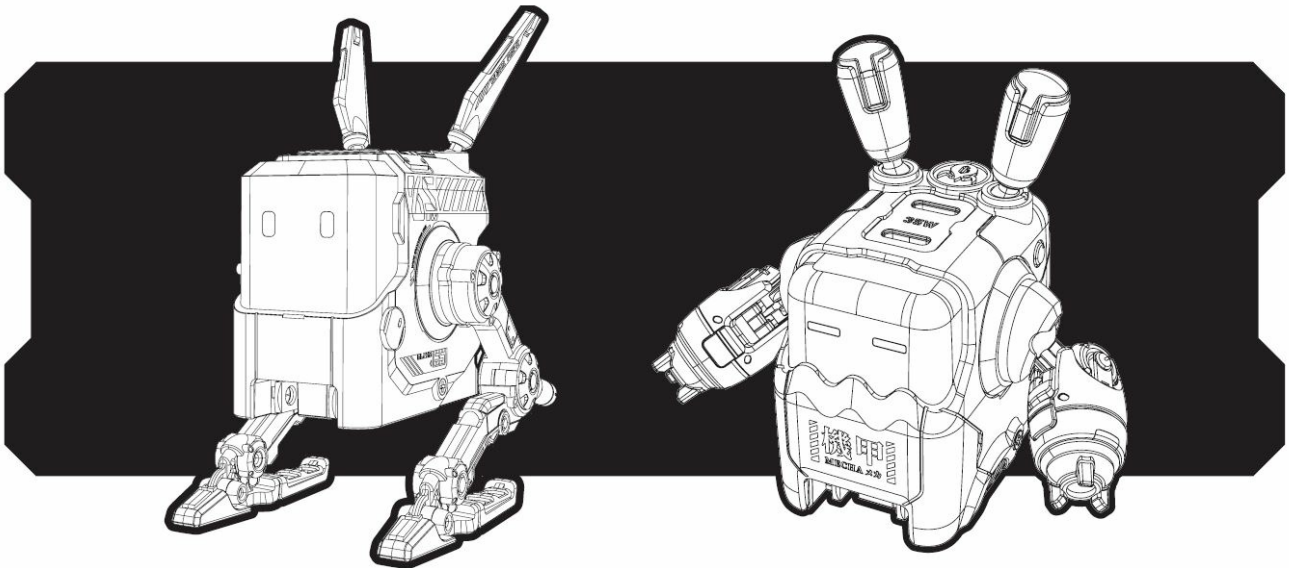
65W GaN Power Adapter

Adjustable Desktop Companion 65W GaN Triple Ports Fast Charging / Multi-Protocol Compatibility / Powerful Intelligent Temperature Control Technology / 8-Layer Safety Protection System

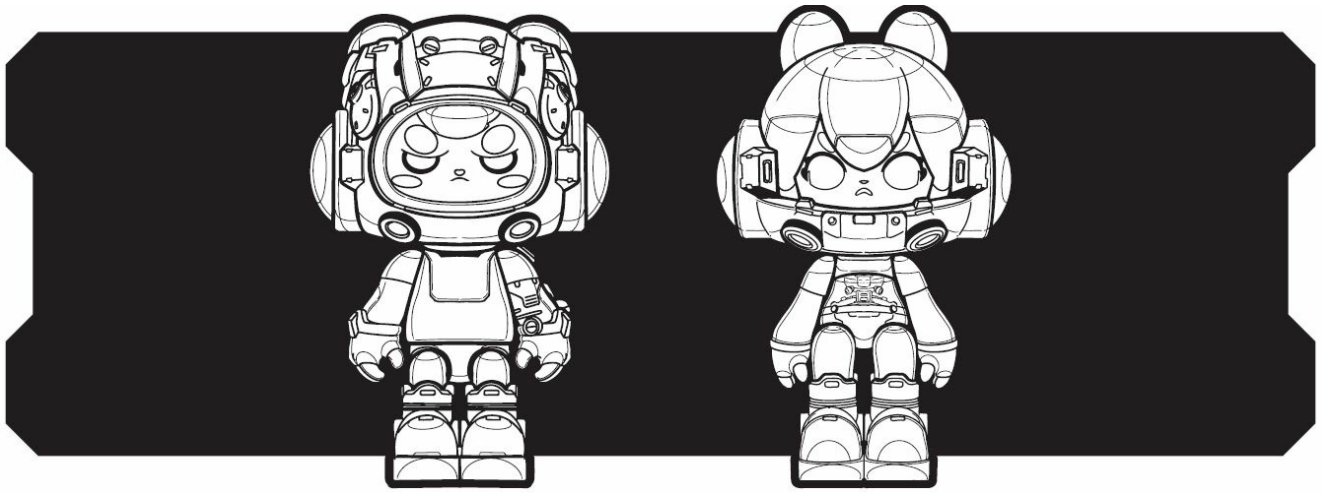
Delta35

35W GaN Power Adapter

Mecha Design Fast Charger / 35W GaN Dual| Ports for Simultaneous Charging / Compatible with Multiple Protocols and Devices



KIMO & TIFA GravaStar Art Toys



Frequently Asked Questions (FAQ)

Q: What is the model of the device?


A: The model of the device is SBWB4UBS.FSDVSZ.8JSFMFTT(BNJOH.PVTF.

Q: What does FCC Compliance mean?

A: FCC Compliance refers to the adherence of the device to the regulations and standards set by the Federal Communications Commission (FCC) in the United States.

www.gravastar.com

Documents / Resources

 <small>GravaStar Mercury M2 Wireless Gaming Mouse</small> <small>User Manual</small>	<p>MERCURY 2ASXFM2 GravaStar M2 Wireless Gaming Mouse [pdf] User Manual 2ASXFM2 GravaStar Mercury M2 Wireless Gaming Mouse, 2ASXFM2, GravaStar Mercury M2 Wireless Gaming Mouse, M2 Wireless Gaming Mouse, Wireless Gaming Mouse, Gaming Mouse</p>
--	--

References

- [User Manual](#)