




MENUETT 006139 window cleaner 2-in-1 Instructions

[Home](#) » [Menuett](#) » MENUETT 006139 window cleaner 2-in-1 Instructions 

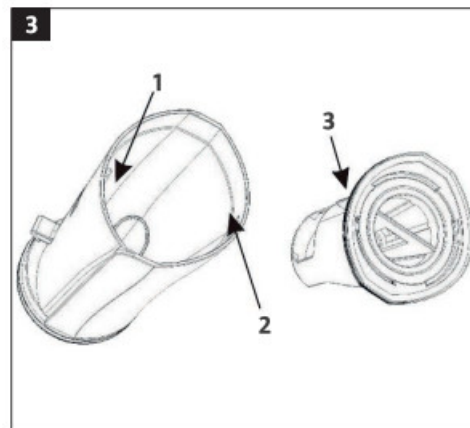
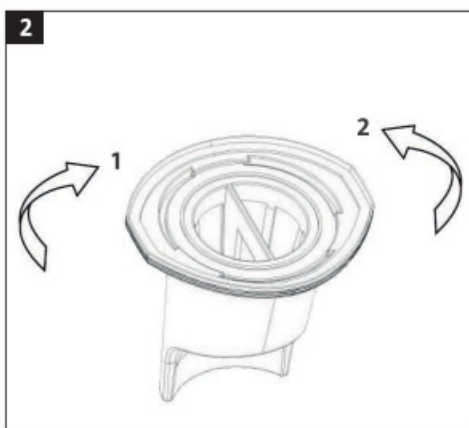
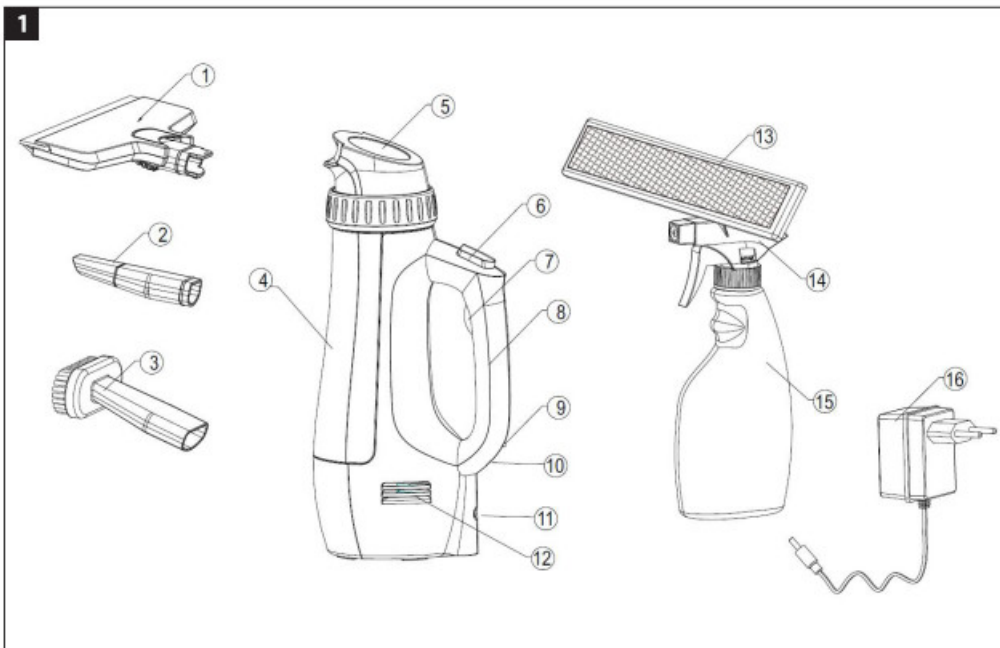


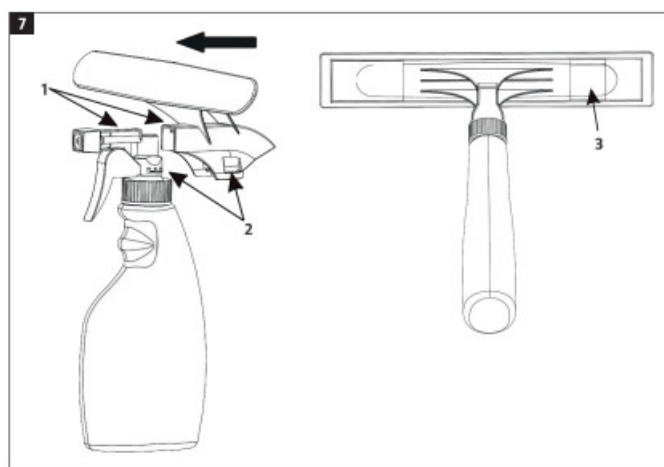
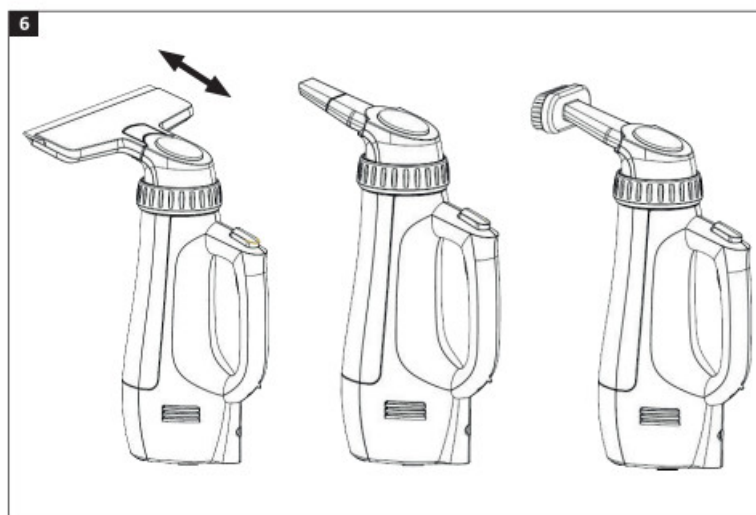
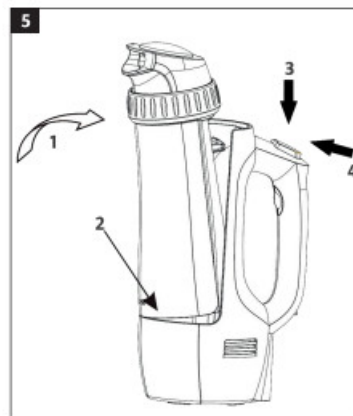
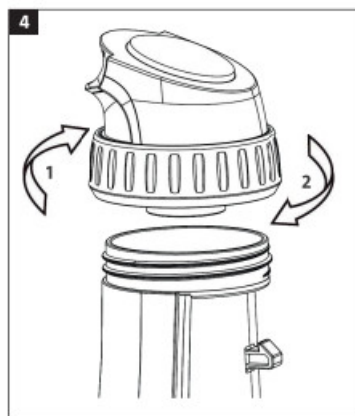
006139 window cleaner 2-in-1
Instructions

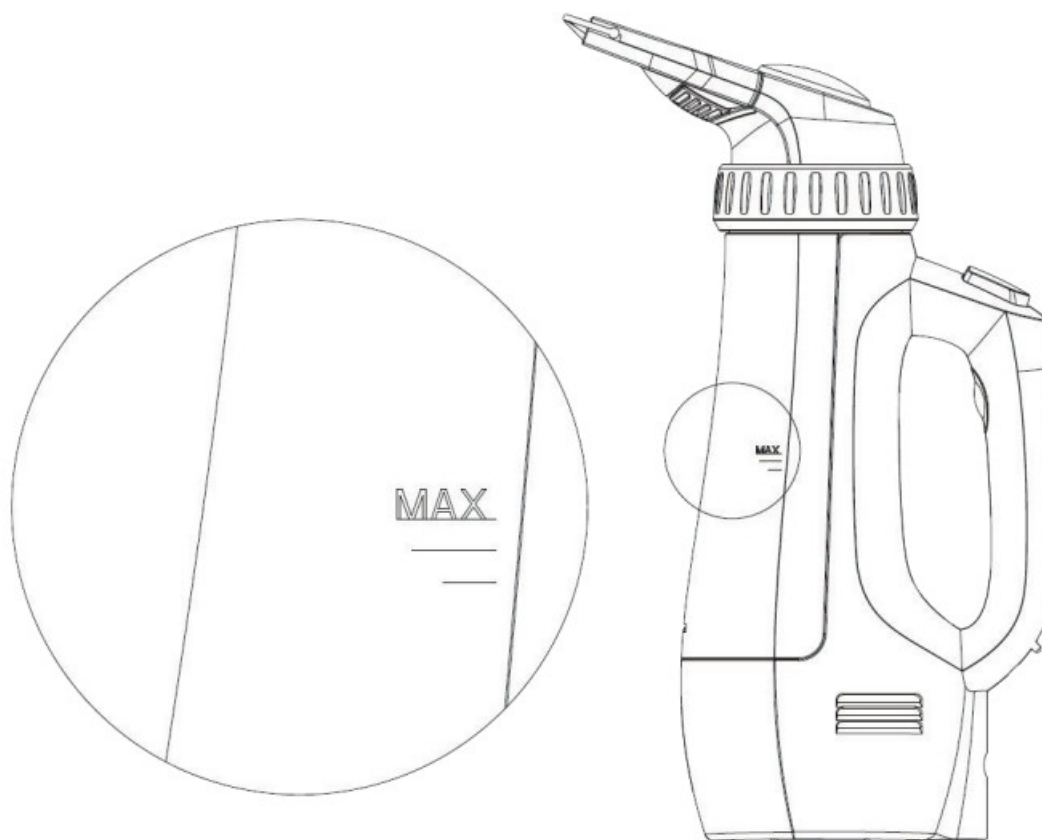


OPERATING INSTRUCTIONS

Important! Read the user instructions carefully before use. Save them for future reference. (Translation of the original instructions).







Contents





- [1 SAFETY INSTRUCTIONS](#)
- [2 TECHNICAL DATA](#)
- [3 DESCRIPTION](#)
- [4 ASSEMBLY](#)
- [5 FITTING THE SWIVEL FASTENER](#)
- [6 FITTING THE CONTAINER](#)
- [7 Removing the container](#)
- [8 FITTING ACCESSORIES](#)
- [9 EMPTYING THE CONTAINER](#)
- [10 IMPORTANT](#)
- [11 TROUBLESHOOTING](#)
- [12 Documents / Resources](#)
- [13 Related Posts](#)

SAFETY INSTRUCTIONS

- The product must only be used for its intended purpose and in accordance with these instructions.
- Read all the instructions and safety instructions and all the warning labels on the product prior to installation and use.
- Do not expose the product or charger to moisture.
- The product is only intended for household use indoors.
- Do not store or charge the product outdoors.
- Put the product away after it has been used.
- Fully charge the product before using it for the first time.
- Keep children under supervision to make sure they do not play with the product.

- Keep the product under careful supervision when it is used by, or near children.
- Never leave the product unattended when switched on.
- Do not start the product until it is fully assembled. Do not handle the product, power cord, plug, or charger with wet hands.
- Do not use the product without a filter.
- Do not use an extension cord.
- Connect the charger directly to a power point.
- Only use the supplied charger. Do not attempt to charge the battery with any other charger. Do not attempt to charge other batteries with the supplied charger.
- Connect the battery to the charger with the correct polarity, otherwise, this could damage the battery.
- Do not use the product if the power cord or plug is damaged, if the product is not working properly, if it has been exposed to water, or if it is damaged in any other way. Take the product to an authorized service center to be checked, repaired, or adjusted.
- Do not carry or pull the charger by the power cord. Keep the power cord away from heat, oil, and sharp edges.
- Only use accessories recommended by the manufacturer.
- Switch off the product before cleaning, maintenance and/ or replacing accessories.
- Be careful when using on stairs.
- Never insert any objects into the openings on the product. Keep the ventilation openings clean.
- Do not use the product to clean up flammable liquids or use it in the vicinity of such liquids. Do not use the product to vacuum up burning or glowing objects, such as cigarettes or hot ash.
- Do not charge the battery at temperatures below 0°C, this can damage the battery. The optimum charging temperature is from 10-30°C.
- A small amount of fluid can leak from the battery during extreme use, or in extreme temperatures. If you get battery fluid on your skin or clothes, wash immediately with soap and water. If you get battery fluid in your eyes, rinse your eyes with clean water for at least 10 minutes and then seek medical attention immediately.

SYMBOLS

	Conforms with the requirements in the relevant EU directives.
	Recycle as electrical waste.
	Safety class III.
<div>  </div> <div>Vacuuming water.</div>	

TECHNICAL DATA

Rated voltage	230 V — 50 Hz
Output	350 W
Size	H320 x W260 mm
Volume	150 ml
Weight	0.8 kg
Battery technique	Li-Ion
Charging time	4 h
Run time	40 min

DESCRIPTION

1. Scraper
2. Radiator nozzle
3. Brush nozzle
4. Container
5. Swivel fastener
6. Release button for container
7. Power switch
8. Handle
9. Charge indicator
10. Charger connection
11. Connection for the extension tube
12. Air outlet
13. Cleaning pad
14. Fastener for a cleaning pad
15. Spray can
16. Charger
16. Extension tube, 60 cm

FIG. 1

ASSEMBLY

FITTING THE FILTER

1. Put the filter in the filter holder and turn it clockwise until it stops. (Close)
2. Turn anticlockwise to release the filter. (Open)

FIG. 2

FITTING THE FILTER UNIT ON THE CONTAINER

Align the rib to the slot and insert the filter unit in the container so that it rests against the recess.

1. Slot
2. Rib
3. Recess

FIG. 3

4. Grip the rib on the filter and pull out the filter unit.
5. Hold the filter unit and twist the filter anticlockwise to release it from the holder
6. Always take the filter holder out of the container before removing the filter — it is difficult to remove the filter holder from the container without the filter fitted.

IMPORTANT

- There is a risk of leakage if the filter unit is not correctly fitted.
- Do not use the window cleaner without the filter in the container.

FITTING THE SWIVEL FASTENER

Align the thread to the container and turn clockwise to tighten. 1. Close 2. Open FIG. 4

FITTING THE CONTAINER

1. Align the rib to the slot (1) and press until it clicks to lock the container
2. Press down the swivel fastener (2) and turn to adjust.

Removing the container

Press the release button forward (3) and down (4) to release the container. FIG. 5

FITTING ACCESSORIES

- Fit the required accessory by pushing it in the connector. Remove by pulling out.
- The scraper is used for liquid on windows and other surfaces. the window cleaner. Dust or liquid is vacuumed into the container.
- The radiator nozzle can be used for dust or liquid.
- The brush nozzle can only be used for dust.

EMPTYING THE CONTAINER

1. Remove all accessories.
2. Grip the container and press the release button. Twist the container a little to release it.
3. Remove the filter unit and empty the container.
4. Remove and clean the filter and filter holder.
5. Clean the container.


IMPORTANT

- Hold the container when pressing the release button, otherwise, the container can drop.
- Switch off the window cleaner before cleaning and maintenance.
- Allow the filter to dry before fitting.

TROUBLESHOOTING

Problem	Cause	Action
It is not possible to spray with the spray can.	The nozzle is closed.	Set the spray head to spray or jet.
	The spray head is damaged.	Contact your dealer for spare parts.
Leaking water.	Leak in seal.	Check whether the rubber seal in the filter unit is damaged. Contact your dealer for spare parts.
	The filter unit is not properly inserted.	Put the filter unit in the container so that it rests against the recess.
	Put the filter unit in the container so that it rests against the recess.	Empty the container.
The window cleaner does not have any suction power.	The battery is discharged.	Fully charge the battery.
	The filter is blocked.	Clean the filter, allow to dry and replace.

Documents / Resources

	<p>MENUETT 006139 window cleaner 2-in-1 [pdf] Instructions 006139 window cleaner 2-in-1, window cleaner 2-in-1, cleaner 2-in-1</p>
---	---