



Melitta One Filter Coffee Machine User Manual

[Home](#) » [Melitta](#) » Melitta One Filter Coffee Machine User Manual 

Melitta One Filter Coffee Machine



Contents

- 1 Dear Customer,
- 2 For your safety
- 3 Appliance at a glance
- 4 First steps
- 5 Operating the appliance
- 6 Changing settings
 - 6.1 Preparing small coffee quantities
- 7 Cleaning the appliance
- 8 Descaling the appliance
- 9 Customer Support
- 10 Documents / Resources
 - 10.1 References
- 11 Related Posts

Dear Customer,

Thank you for purchasing our Melitta One® filter coffee machine. We hope you enjoy using it.

If you require further information or have any questions, contact Melitta® or visit our website at: www.melitta.de.

For your safety

The appliance complies with the valid European directives.

The appliance was inspected by independent test institutes and certified. Please read the safety instructions and the operating instructions through completely.

You must observe the safety and operating instructions to avoid dangers. Melitta® accepts no liability for damage caused by failure to observe the instructions.

Proper use

The appliance is intended for use in private households or comparable environments to prepare coffee beverages.

Any other use is regarded as improper and may lead to personal injury and material damage.

Danger from electric current

Only use the appliance if it is in a technically flawless condition. Only connect the appliance to a correctly installed earthed mains socket.

Make sure that the power cable does not touch the hotplate while it is hot.

If the appliance or the power cable is damaged, there is a risk of fatal electric shock. You may not use the appliance in this case, but instead you need to have it repaired by the manufacturer, the customer services or a service partner.

You must not immerse the appliance in water or let the power cable come into contact with water.

Disconnect the appliance from the power supply when left unsupervised for a long time.

Risk of burns and scalds

The coffee and steam produced are very hot. Avoid direct contact with the flowing coffee and the steam. Do not remove the filter during preparation.

The jug and the hotplate become very hot during preparation and also remain hot for a long period after preparation. Do not touch the jug or the hotplate when they are hot. Touch the hot jug only by the jug handle.

General safety

Do not operate the appliance in a cabinet.

Do not reach into the interior of the appliance during operation.

You may not open the housing or manipulate the appliance in any other way.

You may not use the jug in a microwave.

Do not use abrasive cleaning agents or scouring milk to clean parts that come into contact with food. Remove the remains of the cleaning agents with clear water.

Children

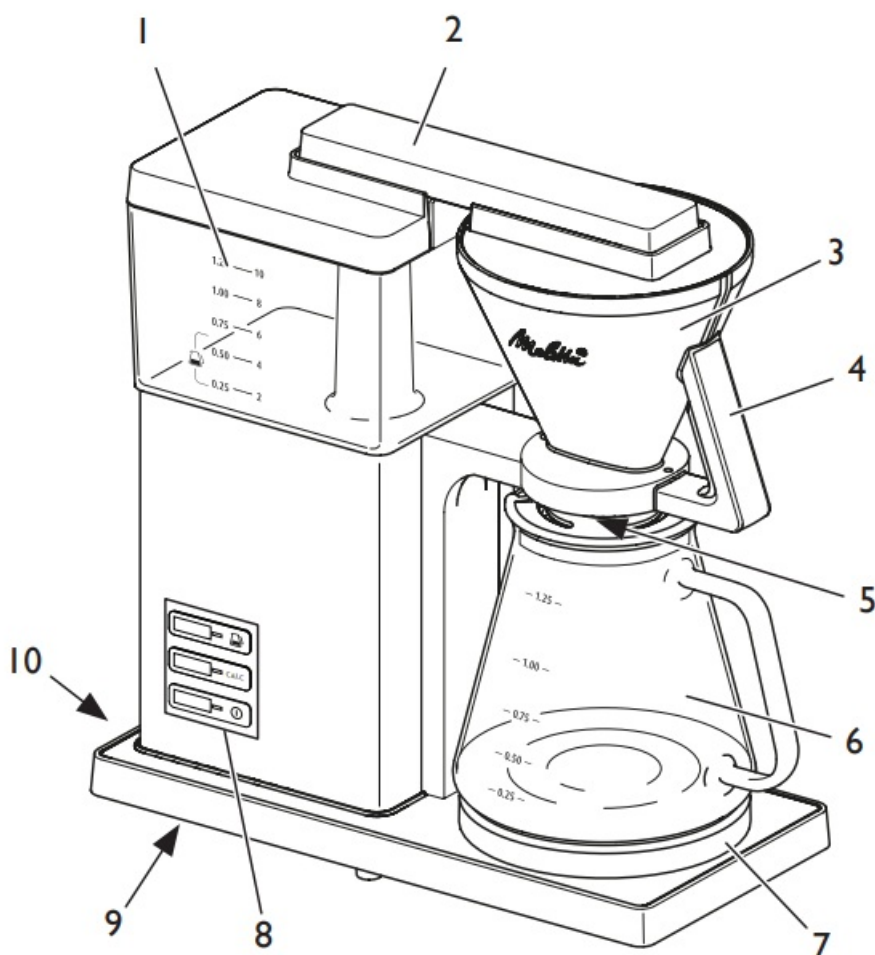
Children must not be allowed to play with the appliance.

You must keep children who are younger than 8 years away from the appliance.

This appliance may be used by children over 8 years of age and by persons with reduced physical, sensory or mental capabilities or a lack of experience and knowledge, but only if they are supervised or have been instructed in using the appliance safely and understand the resulting risks.

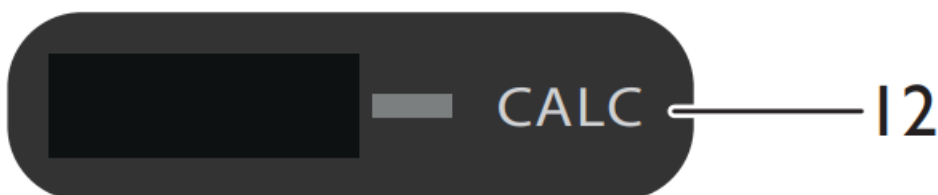
Cleaning and maintenance must not be undertaken by children younger than 8 years of age. Children older than 8 years of age must be supervised during cleaning and maintenance.

Appliance at a glance



1. Water tank with water tank lid
2. Water overflow
3. Filter with filter lid
4. Filter handle with lever
5. Drip stop
6. Jug with jug lid

7. Hotplate
8. Control panel
9. Cable-winding facility CALC
10. Power cable



Item	Designation	Main function	Secondary function
11	"Small Quantity" button with white lamp	Optimises the brewing process for preparation of small quantities of coffee.	Sets the signal tone for the end of brewing
12	"Descaling" button with red lamp	Activates the descaling program.	–
13	"Start/stop" button with white lamp	Starts or stops the preparation.	Sets the warm-keeping time.

First steps

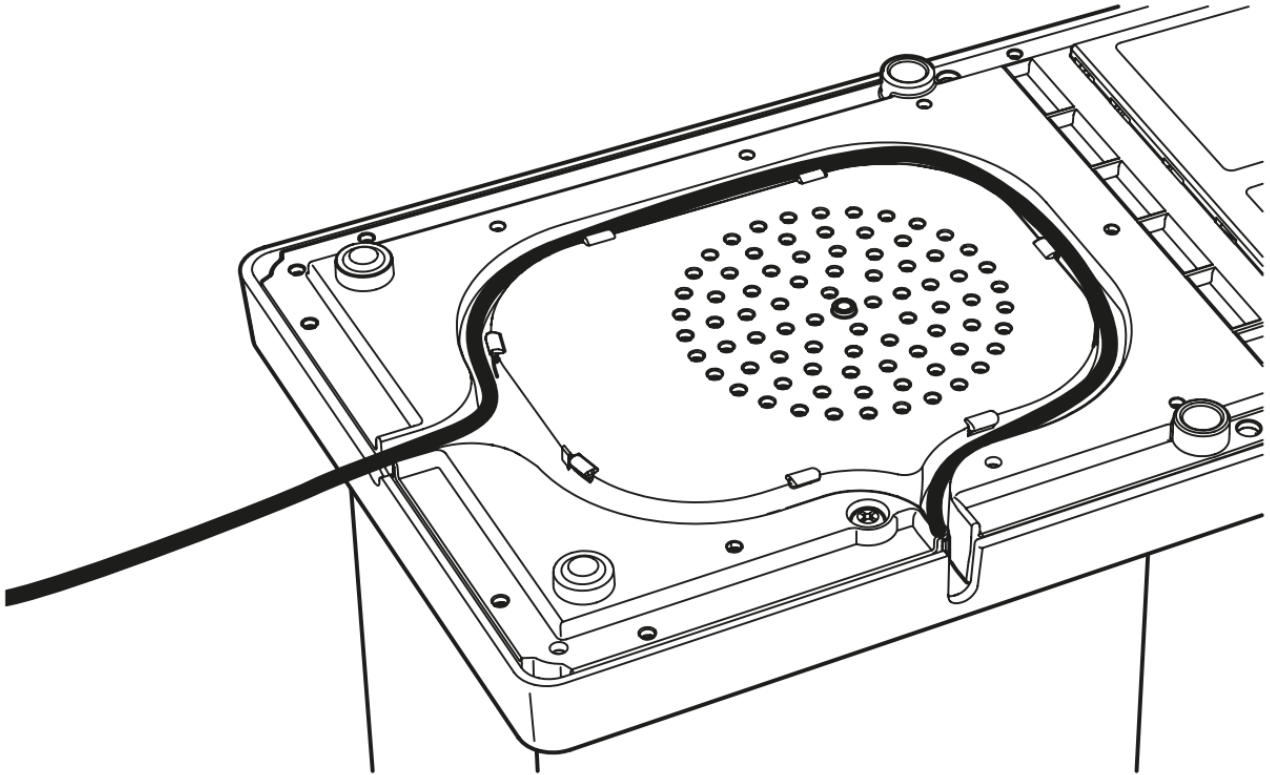
Unpacking the appliance

Remove the packaging material and the adhesive strips from the appliance. Please keep the original packaging.

Setting up the appliance

- Set up the appliance in a dry room.
- Set up the appliance on a stable, flat and dry surface. The surface may not be hot.
The appliance may not be placed in the vicinity of sinks or the like.
- Route the power cable so it does not lie over edges or cannot be damaged by hot surfaces or the hotplate.

- Store the length of cable that you do not need in the cable-winding facility in the base of the appliance.

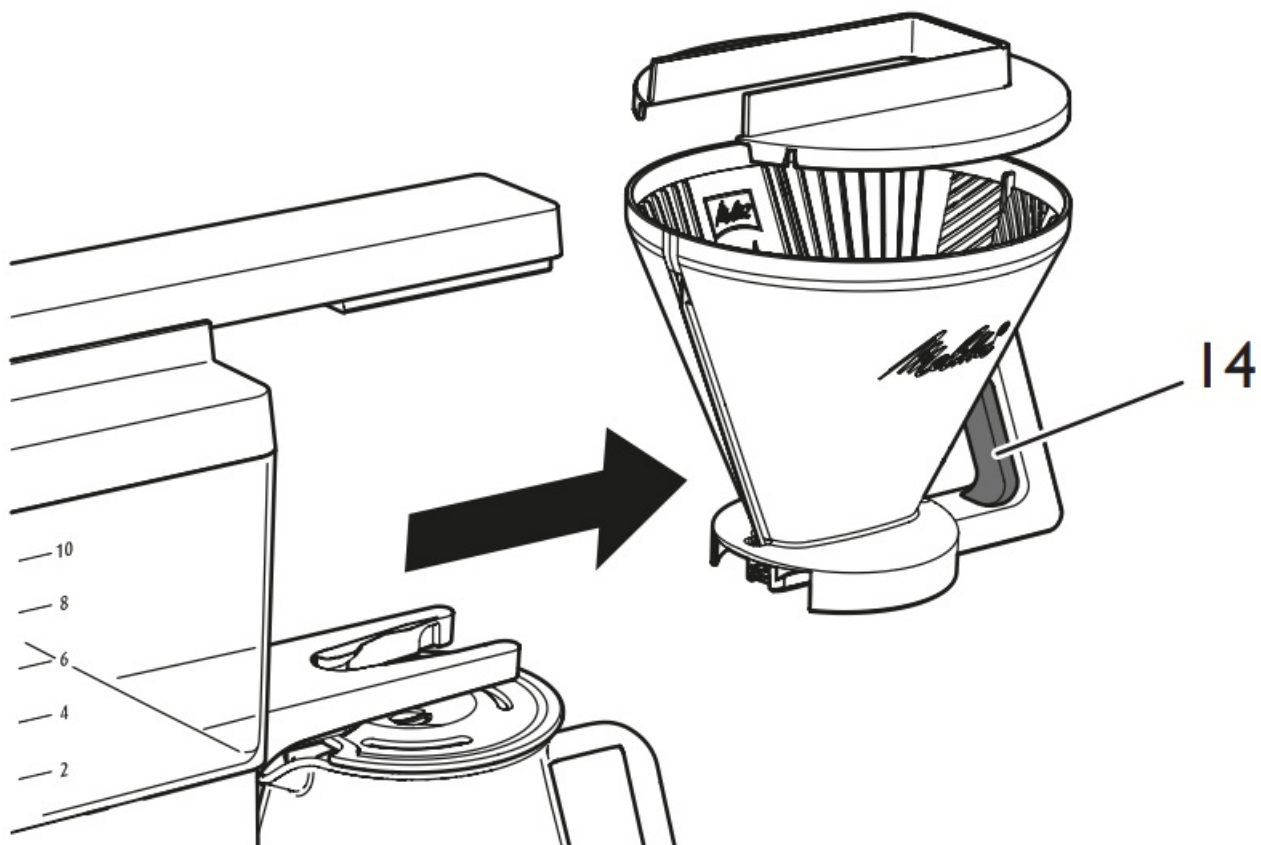


Connecting the appliance

Only connect the appliance to an easily accessible, properly installed earthed mains socket. After connecting, all lamps will illuminate briefly one after the other.

Full isolation from the mains is achieved by disconnecting the mains plug.

Removing filter



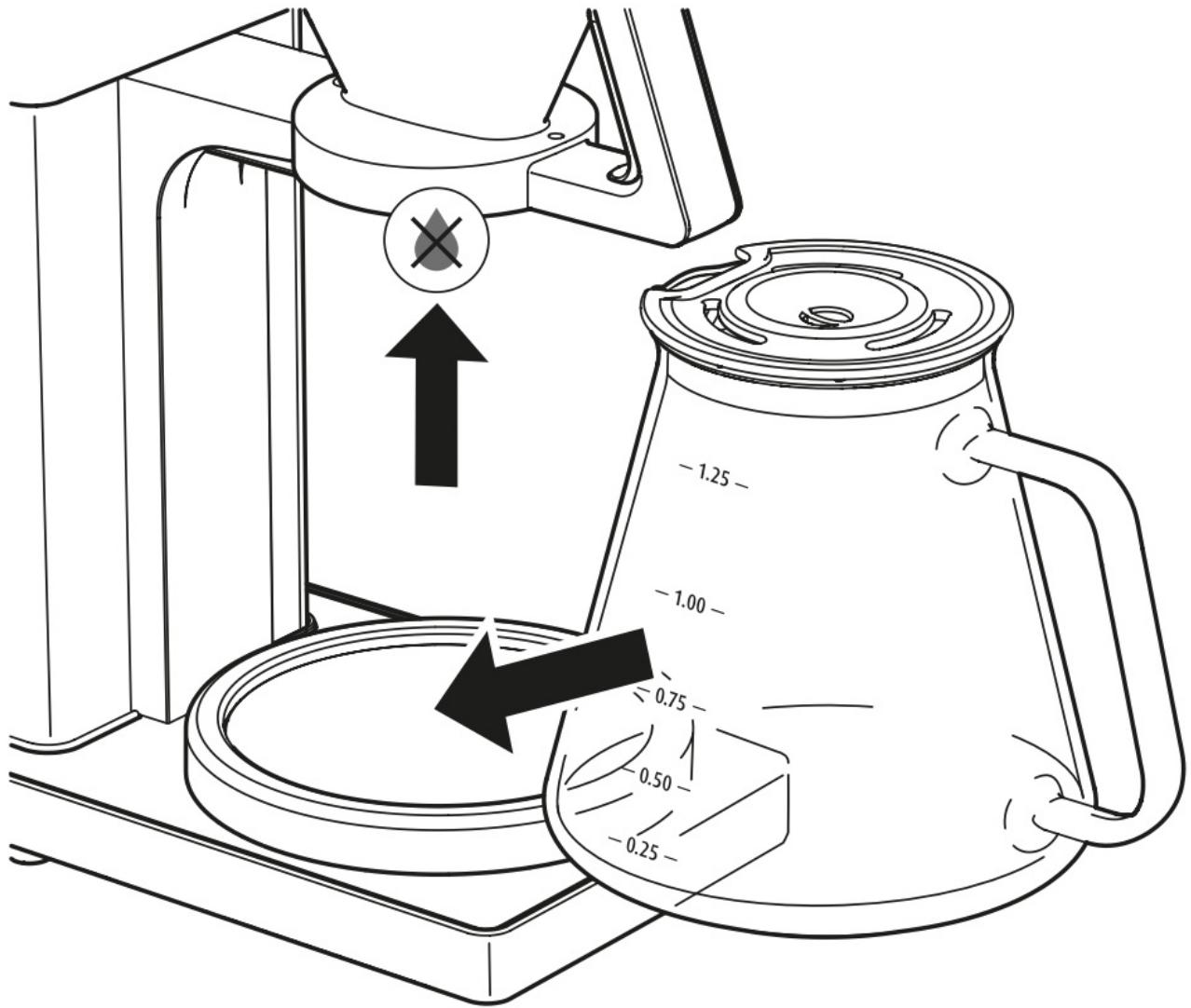
To remove the filter, press the lever **(14)** and pull the filter by the filter handle out of the appliance.

The filter must click in audibly upon inserting. Place the filter lid on the filter.

Removing jug

Always hold the jug by the jug handle when removing and inserting it.

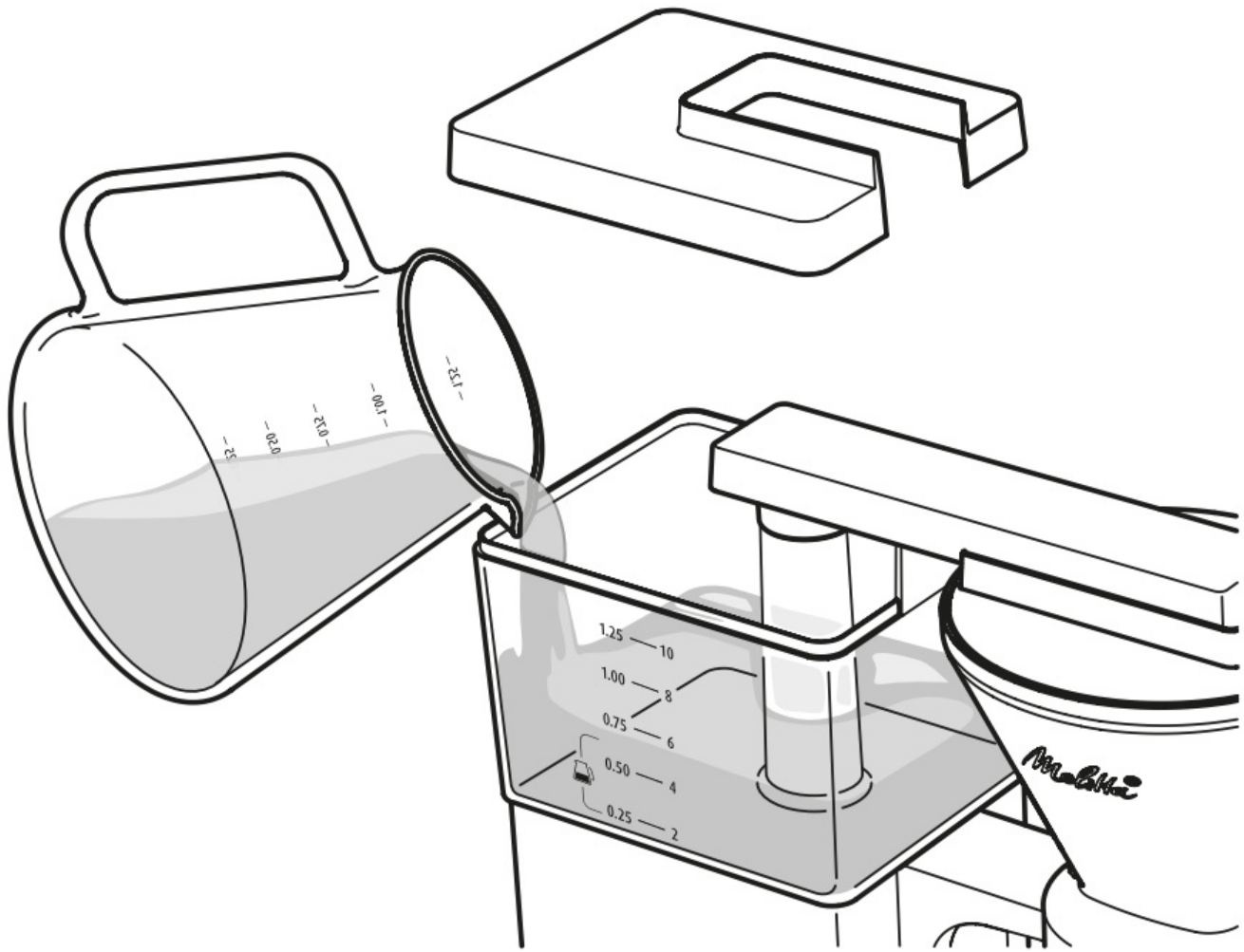
Place the jug correctly on the hotplate so that the jug lid pushes the drip stop up slightly. This opens the drip stop and the contents of the filter can flow into the jug. The drip stop stops coffee dripping when you remove the jug



Filling water tank

The markings on the water tank correspond with the number of cups that you prepare during a brewing process. The brewing process will always use up all of the water in the water tank. Therefore, fill only the quantity of water that you require for the subsequent brewing process. The filled quantity of water may not exceed the 10 cup marking as the jug will otherwise overflow.

Fill fresh, clean tap or drinking water into the water tank. Do not use carbonated water or any other liquids. Use the jug to measure the required amount of water.




1. Take the water tank lid off the water tank.
2. Fill the water tank with the required quantity of water.
 - » The water tank is illuminated.
3. Close the water tank with the water tank lid.

Rinsing the appliance


Before using for the first time and after descaling, you need to rinse the appliance twice. You should also rinse the appliance if you do not use the appliance for a longer period.

Rinsing is done without a filter and without coffee.

1. Fill the water tank with fresh, cold tap water up to the 10-cup marking.
 - » The water tank is illuminated.
2. Close the water tank.
3. Push the filter with the fitted filter lid into the appliance. The filter must click in audibly.
4. Place the jug with fitted jug lid under the filter.
5.  Start the rinsing process with the “Start/Stop” button.
 - » The “Start/stop” button will flash.
 - » The rinsing process ends automatically.

The “Start/Stop” lamp lights up and a signal tone sounds depending on the setting.

» The water tank illumination goes out.

6.  Switch off the hotplate with the “Start/Stop” button.

7. Empty the jug.

Always allow the water to flow through completely and empty the jug

Operating the appliance

Observe the following instructions during preparation:

- Use Melitta® filters in the size 1×4®.
- After preparation, dispose of the used filter.
- You can end preparation at any time by pressing the “Start/Stop” button again. Some water will continue to flow after you press the button.
- The hotplate also remains switched on after preparation. The hotplate switches off automatically only at the end of the set keep-warm time.
- Switch off the hotplate with the “Start/ Stop” button if there is not a jug with brewed coffee in the appliance.

Dosing recommendation

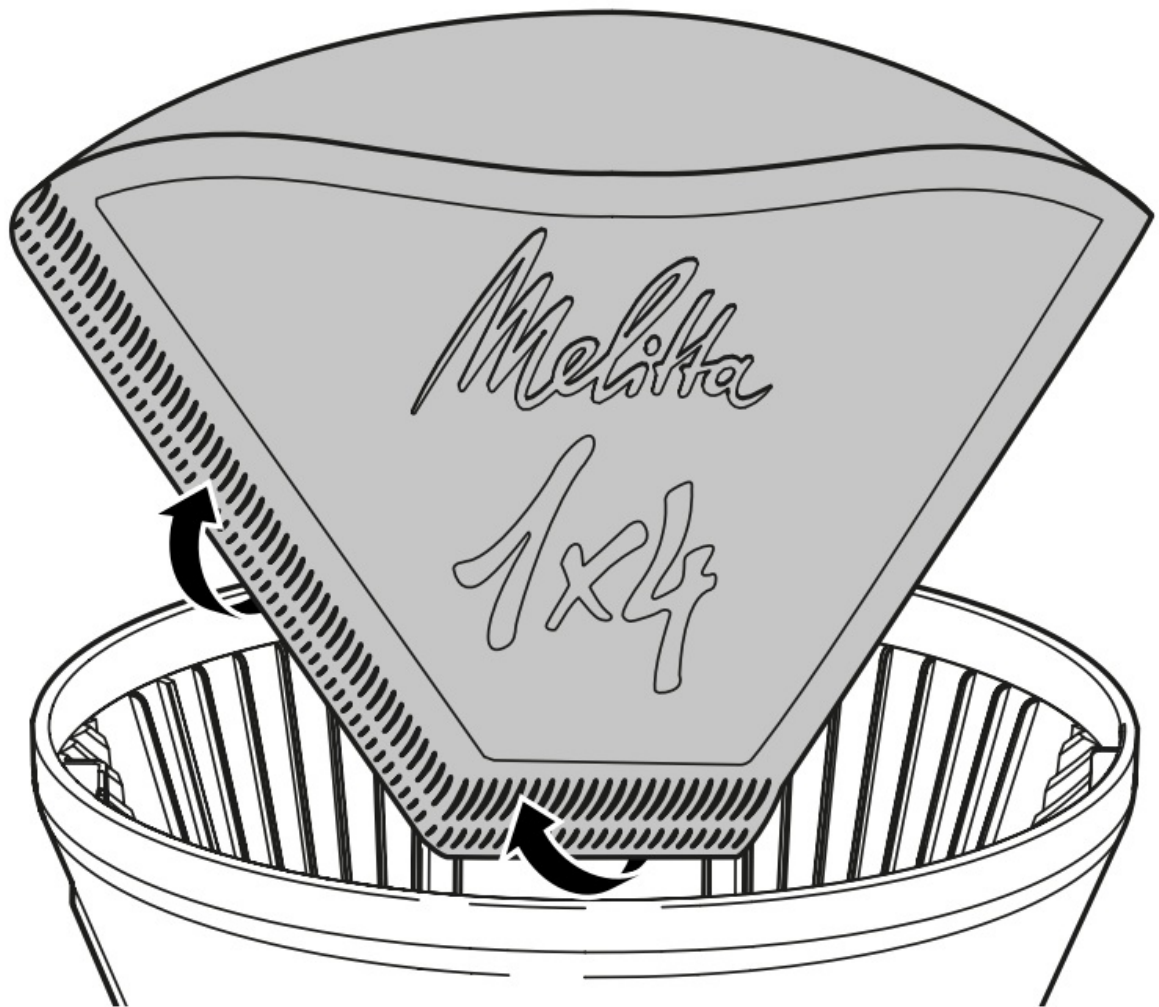
For preparation, light to medium roasts with a medium grinding fineness are particularly well suited.

Weigh 6 to 8 g freshly ground coffee per cup. Put ground coffee into the filter paper according to your taste and the number of cups required. Then smooth the surface of the coffee powder as much as possible.


The Melitta One® has been checked according to the ECBC standards (European Coffee Brewing Centre, www.ecbc.info) and fulfils the demanding conditions of the “Coffee Brewer Certification Programme” in terms of coffee quality.

Preparing coffee

1. Fill the water tank with the required quantity of water.
 - » The water tank is illuminated.
2. Close the water tank.
3. Pull the filter out of the appliance with the lever pressed.
4. Take the filter lid off the filter.
5. Fold a filter along the stamped seam.
6. Fit the filter paper in the filter. Press it down lightly and into the edges of the filter.



7. Fill the filter paper with coffee powder according to the filled quantity of water and your taste.
8. Close the filter with the filter lid.
9. Push the filter into the appliance. The filter must click in audibly.
10. Place the jug with fitted jug lid under the filter.

11.  Start preparation with the “Start/ Stop” button.
 - » The “Start/stop” button will flash.
 - » The preparation ends automatically. The “Start/Stop” lamp lights up and a signal tone sounds depending on the setting.
 - » The water tank illumination goes out.

12. Preparing small coffee quantities



The “Small Quantity” button extends the brewing time. As a result, you will get an aromatic, full coffee flavour even when you prepare small coffee quantities (2 to 5 cups). Proceed in the way described first of all, see chapter 4.2 Preparing coffee.



Press the “Small Quantity” button before starting preparation. Activation is confirmed by the illuminated lamp.






Then, press the “Start/Stop” button. The “Small Quantity” lamp flashes during preparation.

Changing settings







Setting warm-keeping time

The taste of coffee changes when it is kept on the hotplate for longer periods. It becomes bitter. To prevent this, you should enjoy your coffee as fresh as possible immediately after preparation. Also, unnecessarily keeping the coffee warm costs valuable energy.




The appliance is factory-set for a warm-keeping time of 30 minutes. This time can be changed.

1.  Press the “Start/Stop” button for longer than 2 seconds.
 - » The “Start/stop” button will flash.
 - » The water tank is illuminated.
2.  Press the “Start/Stop” button repeatedly until the desired warm-keeping time is set. The flashing rhythm indicates the set warm-keeping time, see the following table.
3.  Press the “Start/Stop” button for longer than 2 seconds to save the setting.



The setting is retained even when you disconnect the appliance from the electricity mains.

Warm-keeping time	Flashing rhythm “Start/stop” lamp
0 minutes	 
30 minutes	 
60 minutes	 

Preparing small coffee quantities

1.  Press the “Small Quantity” button for longer than 2 seconds.
 - » The “Small Quantity” lamp flashes.
 - » The water tank is illuminated.
2.  Press the “Small Quantity” button repeatedly until the desired signal tone is set. The flashing rhythm indicates the set signal tone, see the following table.
3.  Press the “Small Quantity” button for longer than 2 seconds to save the setting.

The setting is retained even when you disconnect the appliance from the electricity mains.

Signal tone	"Small Quantity" lamp flashing rhythm
On	
Off	

Cleaning the appliance

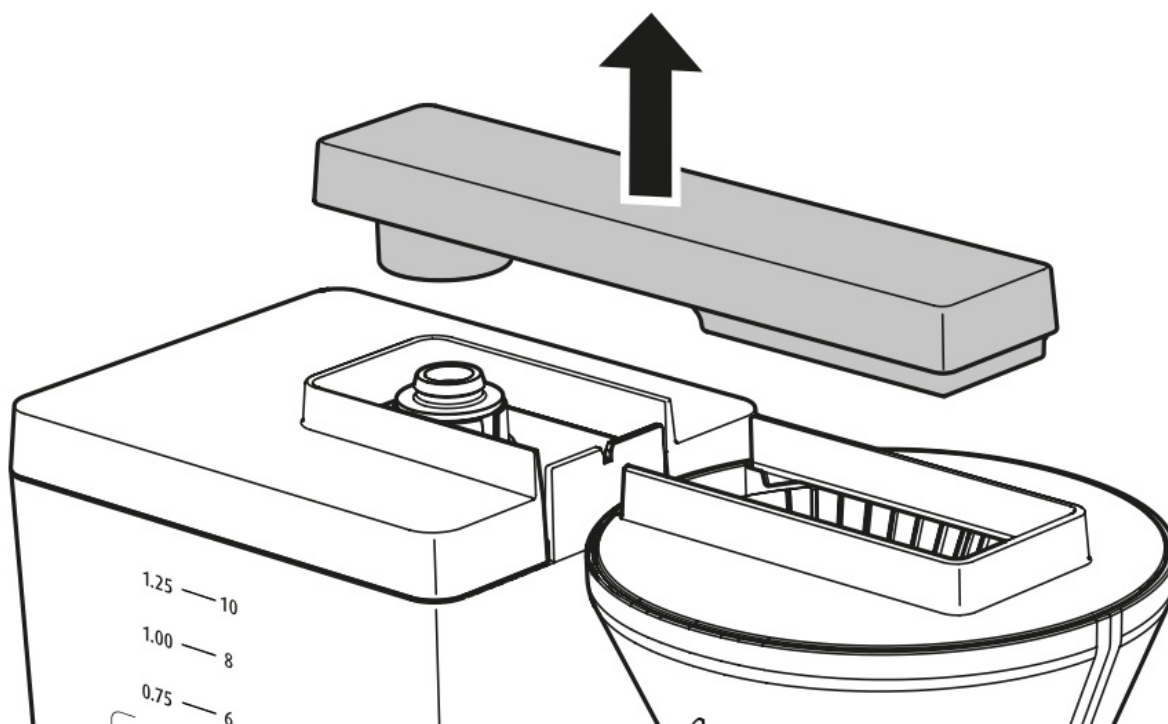
Regular cleaning and maintenance of the appliance guarantee the consistent high quality of your coffee.

Attention! Unsuitable cleaning agents can damage the appliance. Only use the recommended cleaning agents.

Always allow the appliance to cool down before cleaning it.

Do not immerse the appliance or the mains plug in water.

- Clean the outer surfaces of the housing, including the hotplate with a soft, moist cloth.
- Clean the jug and the filter after every use.
- Rinse the jug, the filter and the lid with clear, warm water and a small quantity of washing up liquid. You can also clean these parts in the dishwasher.
- The water overflow can be removed. Clean the water overflow with clear, warm water.




Descaling the appliance

After you have used the appliance for a while, limescale deposits will build up inside it. To ensure that your appliance works perfectly and has a long life, you need to descale it on a regular basis.

The Descale program removes the limescale deposits. You should run the program every four weeks or when the red lamp next to the “Descaling” button lights up. The program takes approximately 8 minutes and should not be interrupted.

Use Melitta® Anti Calc liquid descaling agent for filter coffee machines.

Caution! Descaling agent causes eye irritation. If it accidentally comes into contact with your eyes, you should rinse them with clear water for several minutes. Consult a doctor if symptoms persist.

1. Remove the filter from the appliance.
2. Push the filter into the appliance. The filter must click in audibly.
3. Fill at least 500 ml of descaling fluid into the water tank. Follow the instructions on the packaging of the descaling agent.
4. Place the jug with fitted jug lid under the filter.
5.  Press the “Descaling” button to start the program.
 - » The “Descaling” lamp will flash.
 - » The program ends automatically and a signal tone sounds depending on the setting.
 - » The “Descaling” lamp goes out.
6. After descaling, you must rinse the appliance to remove all remains of the descaling agent, see chapter 3.7 Rinsing the appliance.

Disposal



Appliances bearing this symbol are subject to the European Directive for WEEE (Waste Electrical and Electronic Equipment).

Electrical appliances do not belong in domestic waste. Dispose of the appliance in an environmentally friendly way via suitable collection systems.

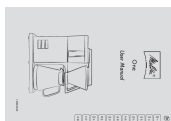
The packaging materials are raw materials and recyclable. Please return them to the raw materials cycle.

Customer Support

Melitta Europa GmbH & Co. KG
Division Household Products
Ringstr. 99
D-32427 Minden
Germany
www.melitta.de
Editorial department:
ZINDEL AG
www.zindel.de



Documents / Resources



[Melitta One Filter Coffee Machine](#) [pdf] User Manual
One Filter Coffee Machine, One, Filter Coffee Machine, Coffee Machine, Machine

References

-  [ECBC](#)
-  [Melitta® Boutique en ligne](#)
-  [ECBC](#)
-  [Melitta® Online Shop | Melitta® Online Shop](#)
-  [Melitta® Online Shop](#)
-  [Melitta® Online Shop](#)

[Manuals+](#).