



Melitta EasyTop Filter Coffee Machine Instruction Manual

[Home](#) » [Melitta](#) » Melitta EasyTop Filter Coffee Machine Instruction Manual 

Melitta EasyTop Filter Coffee Machine Instruction Manual



Dear customer,

Thank you for buying our Easy filter coffee maker. We hope you will be very happy with it.

If you need further information or if you have any questions please contact Melitta® or visit us on the Internet at www.melitta.co.uk

For your safety

The appliance complies with all valid European guidelines.



The appliance has been tested and certified by an independent test institute.

Please read the safety notes and the operating manual in full. To avoid danger you must pay attention to the safety and operating instructions. Melitta® is not liable for damage caused by ignoring these instructions.

Contents

- [1 Safety notice](#)
- [2 Before first use](#)
- [3 Making coffee](#)
- [4 Cleaning and maintenance](#)
- [5 Note on disposal](#)
- [6 Documents / Resources](#)
 - [6.1 References](#)
- [7 Related Posts](#)

Safety notice

This appliance is intended for use in households and similar areas, such as –

- in kitchens for employees in shops, offices and other commercial areas
- in agricultural establishments
- in motels, hotels and other residential facilities and bed and breakfast establishments.

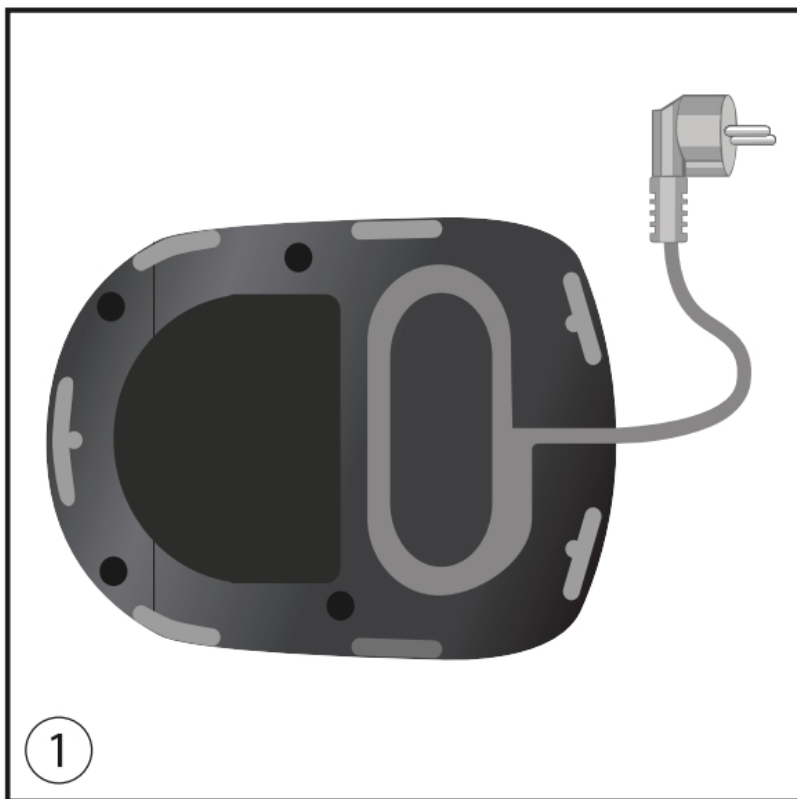
Any other use is considered to be improper use and may result in personal injury or damage to property. Melitta® is not liable for damage caused by improper use. Please observe the following instructions to avoid injuries in case of misuse:

- The appliance must not be placed in a cupboard during operation.
- Connect the appliance only to a properly installed earthed socket.
- The appliance must always be disconnected from the power supply when unsupervised and before assembly, disassembly or cleaning.
- During operation, parts of the appliance such as the steam outlet at the filter become very hot.
Avoid touching these parts and avoid contact with hot steam.
- Do not open the filter holder during brewing.
- The hotplate becomes very hot during use and remains hot for a long time after the brewing process. Contact with the hot plate can cause burns, so avoid touching it.
- Make sure that the power cable does not touch the hot plate.
- Do not use the appliance if the power cable is damaged.
- Do not allow the power cable to come into contact with liquids.
- Never immerse the appliance in water.
- Do not use the jug in the microwave.

- Do not clean the parts that come into contact with food with aggressive cleaning agents or scouring cream. Remove detergent residues with clean water. Further information on cleaning can be found under „Cleaning and care“.
- This appliance can be used by children from 8 years of age or older if they are supervised or have been instructed in the safe use of the equipment and have understood the potential hazards. Cleaning and maintenance must not be carried out by children, unless they are 8 years or older and are supervised. Keep the appliance and the power cable away from children under 8 years of age.
- The appliance may be used by persons with reduced physical, sensory or mental abilities or lack of experience and/or knowledge if they are supervised or have been instructed in the safe use of the appliance and have understood the potential hazards.
- Children must not play with the appliance
- Replacement of the power cable and all other repairs may only be carried out by Melitta® Customer Service or by an authorised repair shop.

Before first use

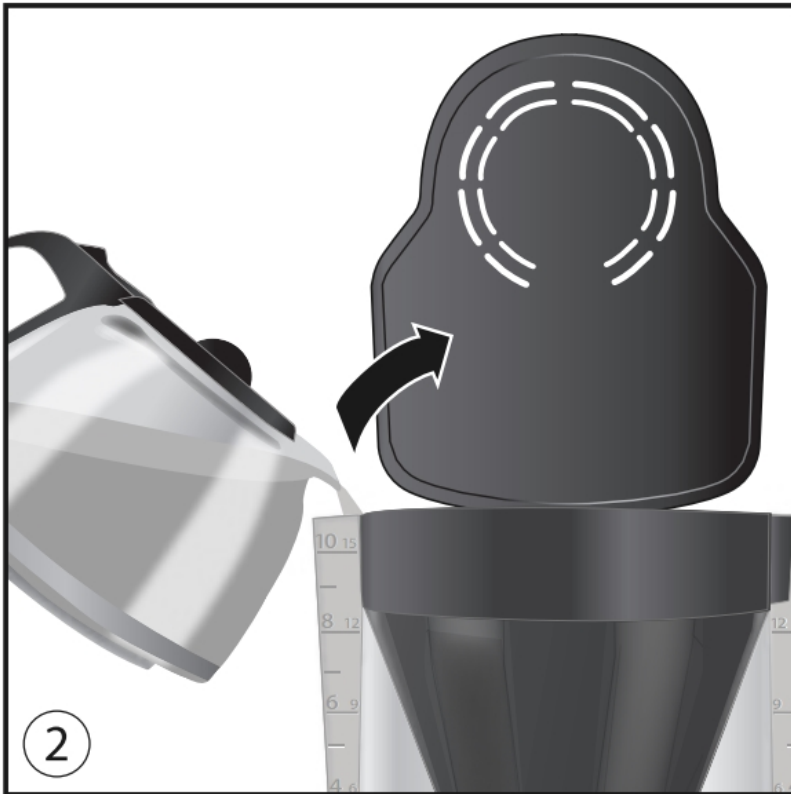
- Ensure that the power supply in your home corresponds to that on the model plate on the base of the appliance.
- Connect the appliance to a power source. Unused cable can be stored in the base of the appliance 1.



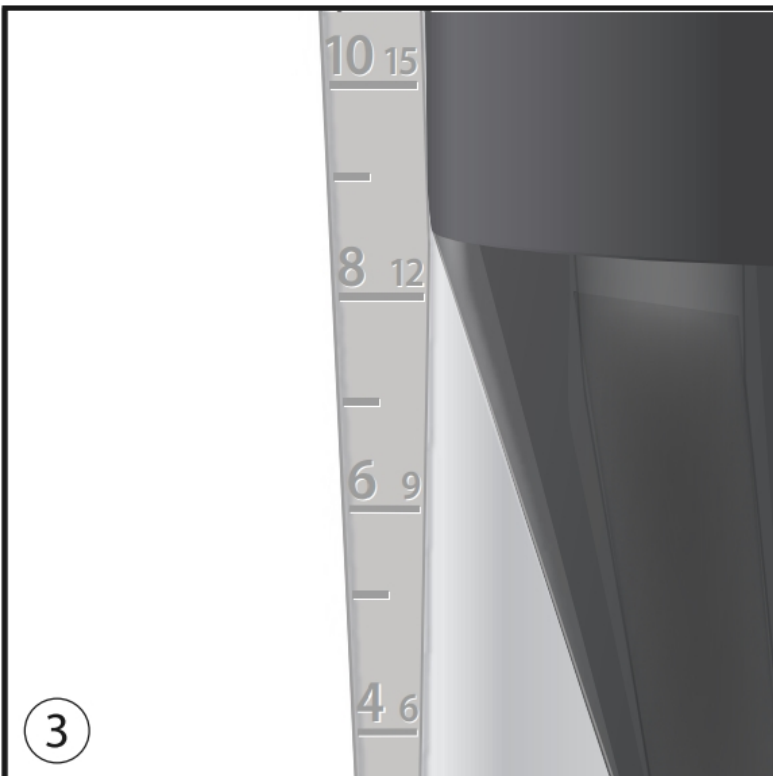
- All appliances have been tested during production to ensure they work perfectly. Therefore there may be for example water deposits remaining. Rinse the appliance twice with the maximum amount of water and without a filter bag or ground coffee, in order to clean it.
- For the best coffee enjoyment and convenient use, the appliance is equipped with various features. These features are explained below.

Making coffee

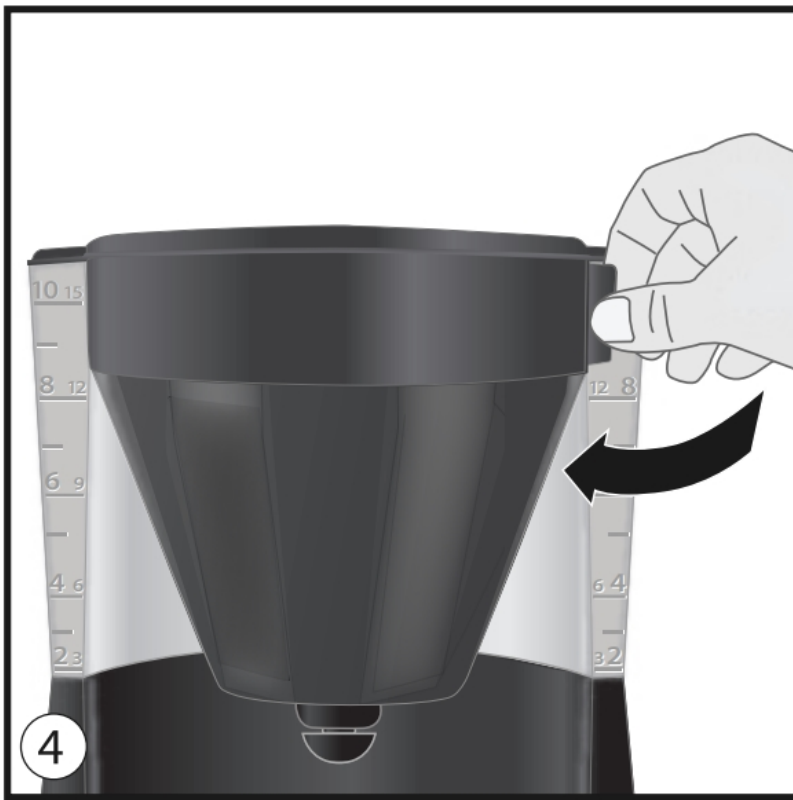
- Ensure that the appliance is connected to the power source.
- Open the lid on the water tank **2**.



- Fill the water tank with the desired amount of water using the glass pot. With the help of the water level display on the tank **3** you can choose the correct number of cups.



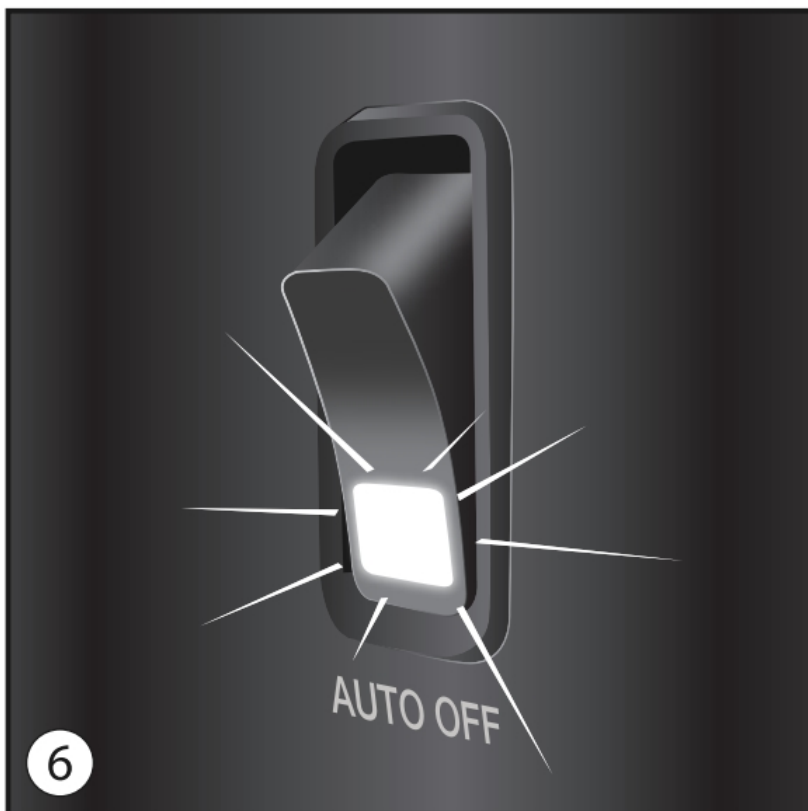
- Small cup symbol = approx. 75 ml coffee per cup, large cup symbol = approx. 110 ml coffee per cup.
- Close the lid on the water tank and place the glass pot with closed lid in the appliance.
- Open the swivel filter **4** to the left.



- Fold a Melitta® filter bag 1×4® at the embossed seam and place it in the filter holder 5. Press the filter bag into the filter holder by hand, to ensure a good fit.



- Put the ground coffee into the filter. The amount depends on your personal taste. We recommend using 6g of ground coffee per large cup.
- Swivel the filter back into the appliance.
- Turn the appliance on 6. Brewing begins.



- After making your coffee the hotplate will keep it warm and will turn off automatically after about 40 minutes. This avoids unnecessary use of electricity and saves energy. You can of course turn the machine off manually at any time.
- The drip stop prevents your coffee from dripping when you remove the pot from the appliance 7.



Cleaning and maintenance

External cleaning

- The housing can be cleaned with a soft damp cloth.
- The glass pot and lid and the swivel filter **8** can be washed in the dishwasher.
- When cold, the hotplate can be cleaned with a soft damp cloth.



Descaling

Depending on water hardness the appliance can become calcified with use. This also increases the appliance's energy consumption as lime scale on the heating element can prevent the water heating effectively. To avoid damage the appliance must be descaled regularly.

The descaling process consists of 2 steps, both of which must be completed.


Descaling

- Follow the manufacturers instructions regarding amounts and pour the descaler into the water tank. We recommend using Melitta® "Anti Calc Liquid for Filter Coffee & Aqua Machines".
- Turn the appliance on and follow the descaler manufacturer's instructions.
- When the descaler liquid has fully run through the appliance then it should be turned off.

Rinsing

- After step 1 the appliance must be rinsed with fresh water. To do this allow the machine to cool for a short time (approx. two minutes) then fill the appliance with the maximum amount of water.
- Turn the appliance on and allow all the water to flow through it. Then turn the appliance off immediately.
- Repeat the rinsing process.

Note on disposal


- Appliances labelled with this symbol  are subject to European guidelines for WEEE (Waste Electrical and

Electronic Equipment).

- Electric appliances do not go in the household bin. Dispose of the appliance in an environmentally friendly way using suitable collection systems.
- Packaging materials are raw materials and can be recycled. Please recycle them.



Documents / Resources

 <p>Melitta EasyTop Filter Coffee Machine, EasyTop, Filter Coffee Machine, Coffee Machine, Coffee Filter Machine, Coffee Filter</p>	<p>Melitta EasyTop Filter Coffee Machine [pdf] Instruction Manual</p>
--	---

References

- [Passionate About Coffee | Melitta®](#)
- [Melitta® Online Shop | Melitta® Online Shop](#)
- [Melitta® Online Shop](#)
- [Melitta® Boutique en ligne](#)
- [Melitta® Online Shop](#)
- [Melitta® Online Shop](#)