



Melitta 3325V0875-06 AromaFresh Grind and Brew Filter Coffee Machine Instruction Manual

[Home](#) » [Melitta](#) » Melitta 3325V0875-06 AromaFresh Grind and Brew Filter Coffee Machine Instruction Manual 

Contents

- 1 Melitta 3325V0875-06 AromaFresh Grind and Brew Filter Coffee Machine
- 2 Product Information
- 3 Product Usage Instructions
- 4 OVERVIEW
- 5 Before first use
- 6 Set water hardness
- 7 Setting the hotplate
- 8 Coffee preparation
- 9 Timer Feature
- 10 Cleaning and care
- 11 Guarantee
- 12 Documents / Resources
 - 12.1 References



Melitta 3325V0875-06 AromaFresh Grind and Brew Filter Coffee Machine



Product Information

- **Product Name:** AROMAFRESH
- **Model Number:** 3325V0875-06
- **Language Options:** DE, GB, FR, NL, IT, ES, DK, SE, NO, FI, PL
- **Product Manual:** Available in multiple languages

Product Usage Instructions

1. Before first use, ensure that the appliance is disconnected from the power supply.
2. Set the water hardness level based on your water quality. There are four options available: I, II, III, IV. Refer to the user manual for guidance on selecting the appropriate water hardness level.
3. Set the desired hotplate temperature. Refer to the user manual for instructions on how to adjust the hotplate setting.
4. Prepare the coffee by selecting the desired number of cups and adding water to the water tank. The display will show the number of cups selected. Note that all the water in the tank will be used during coffee preparation.
5. If using coffee beans, ensure that they are of good quality and grind. Follow the user manual for instructions on how to fill the coffee bean container and adjust the grind settings.
6. If using coffee powder, follow the user manual for instructions on how to add it to the machine.
7. If desired, use the timer function to program a specific brewing time. Refer to the user manual for instructions on how to set the timer.
8. After each use, clean and maintain the appliance according to the provided guidelines. This includes regular descaling and cleaning of removable parts.
9. Dispose of the appliance and its components according to local regulations and disposal guidelines.

Dear customer,

Thank you for buying our AromaFresh filter coffee maker. We hope you will be very happy with it.
If you need further information or if you have any questions please contact Melitta® or visit us on the Internet at www.melitta.co.uk

For your safety

- The appliance complies with all valid European guidelines.
- The appliance complies with all valid United Kingdom guidelines.

The appliance has been tested and certified by an independent test institute.

Please read the safety notes and the operating manual in full. To avoid danger you must pay attention to the safety and operating instructions. Melitta® is not liable for damage caused by ignoring these instructions.

Safety notice

This appliance is intended for use in households and similar areas, such as

- in kitchens for employees in shops, offices and other commercial areas
- in agricultural establishments
- in motels, hotels, and other residential facilities and bed and breakfast establishments

Any other use is considered to be improper use and may result in personal injury or damage to property.

Melitta® is not liable for damage caused by improper use.

Please observe the following instructions to avoid injuries in case of misuse:

- The appliance must not be placed in a cupboard during operation.
- Connect the appliance only to a properly installed earthed socket.
- The appliance must always be disconnected from the power supply when unsupervised and before assembly, disassembly or cleaning.
- During operation, parts of the appliance such as the steam outlet at the filter become very hot. Avoid touching these parts and avoid contact with hot steam.
- Do not open the filter holder during brewing.
- The hotplate becomes very hot during use and remains hot for a long time after the brewing process. Contact with the hot plate can cause burns, so avoid touching it.
- Make sure that the power cable does not touch the hot plate.
- Do not use the appliance if the power cable is damaged.
- Do not allow the power cable to come into contact with liquids.
- Never immerse the appliance in water.
- Do not use the jug in the microwave
- Do not clean the parts that come into contact with food with aggressive cleaning agents or scouring cream. Remove detergent residues with clean water. Further information on cleaning can be found under „Cleaning and care“.
- This appliance can be used by children from 8 years of age or older if they are supervised or have been instructed in the safe use of the equipment and have understood the potential hazards.
- Cleaning and maintenance must not be carried out by children unless they are 8 years or older and are

supervised. Keep the appliance and the power cable away from children under 8 years of age.

- The appliance may be used by persons with reduced physical, sensory or mental abilities or lack of experience and/or knowledge if they are supervised or have been instructed in the safe use of the appliance and have understood the potential hazards.
- Children must not play with the appliance
- Replacement of the power cable and all other repairs may only be carried out by Melit-ta® Customer Service or by an authorized repair shop.

OVERVIEW



- Setting for using ground coffee
- CALC button
- Settings for coffee strength

- TIMER button
- START button
- Settings for number of cups
- H (hours)/ M (minutes) button
- Display
- water level display
- water tank lid
- Bean container
- Grinder ring
- Grinder chamber
- Grind level dial
- Swivel filter
- Drip stop
- Cleaning brush

Before first use

- Ensure that the mains voltage in your home corresponds to that indicated on the identification label on the base of the appliance.
- Connect the appliance to the main power. Cable which is not required, can be stored in the cable spool a.
- Set the current time using the buttons 'H' and 'M' b. It is possible to speed this up by holding in the respective button. The display light can be turned on or off by holding down the H and M buttons b for longer than 2 seconds.
- All appliances are tested for fault-free operation when they are produced. Some residual water may be left behind after this test. Rinse the appliance twice with the maximum amount of water without a coffee filter or ground coffee in order to clean it. To do this, fill the water tank up to the 10-cup level marker, then press the setting for using ground coffee o and turn the appliance on d.
- The appliance has a variety of features for the best coffee enjoyment and ease of use. These features are explained below.

Set water hardness

Depending on water hardness limescale may build up in the appliance. This increases the appliance's energy consumption as the lime scale on the heating element can prevent the water from heating effectively. To avoid damage the appliance must be descaled regularly. The descaling display helps you in this. If the CALC-button c is permanently lit this shows that the appliance needs to be descaled.

The appliance is pre-set for a high level of water hardness (level 4). You can find out the level of water hardness in your area by asking your local water provider or by using water hardness measuring strips available in the shops. For softer water, the descaling display can be adjusted to descale less often.

- Hold down the CALC-button c and by briefly pressing the m-button b set the desired level of water hardness. The hardness setting will then show in the display
- Once you have set the desired level of water hardness, let go of the CALC button. Your settings are now saved.
- The settings and display are shown in the table.

Hardness setting	I	II	III	IV
°dH	<7° dH	7-14° dH	14-21° dH	>21° dH
Display ②	1	2	3	4

Please note:

- Water hardness cannot be programmed while brewing.
- The last water hardness level chosen remains even after removing the power cable.

Setting the hotplate

Keeping coffee warm on the hotplate affects the taste of your coffee. To avoid this you should enjoy your coffee fresh, by drinking it as soon after brewing as possible. Unnecessary warming also uses valuable energy. The factory settings for the appliance are for 40 minutes of warming. After this the hotplate turns off automatically. This time can be changed as needed:

- Hold down the START-button d and by briefly pressing the M-button b set the desired time (20, 40 or 60 minutes). The current warming time will be shown in the display b.
- Once you have set the desired warming time let go of the button. Your setting is now saved.
- The last setting chosen remains even after removing the power cable.

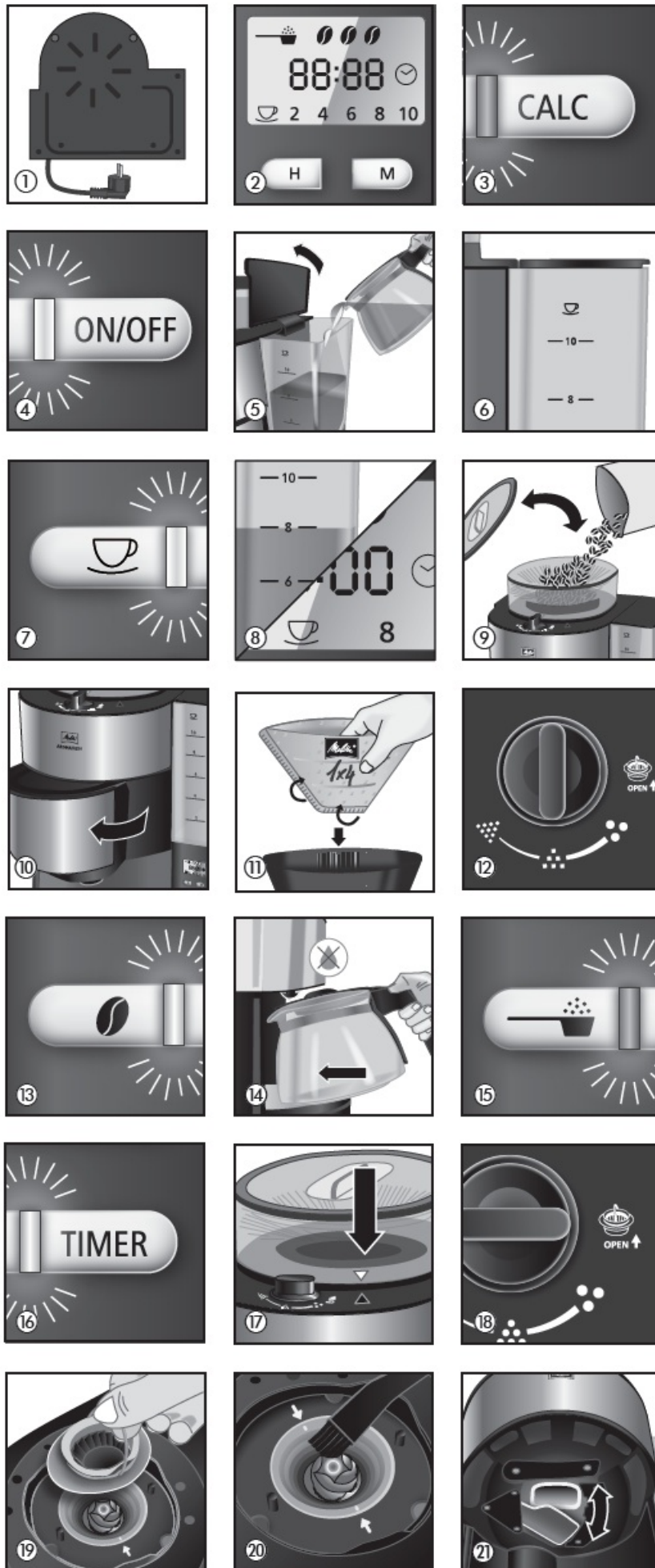
Coffee preparation

For aromatic coffee flavor and the best fit of your coffee filter in the filter holder, we recommend using Melitta® coffee filters size 1×4®.

- Ensure that the power cable is plugged in.
- Open the lid on the water tank e.
- Pour the required amount of cold water into the water tank using the glass jug. With the help of the level markings on the tank f you can select the required number of cups (2/4/6/8/10).
- Close the water tank lid and place the glass jug with a closed lid in the appliance.
- Set the number of cups g to the amount of water in the water tank f. The number of cups is shown in the display b.

Note: Ensure that the selected number of cups corresponds to the amount of water in the water container h. Please note that when making coffee all the water in the water tank is used. If the number of cups and the amount of water do not correspond to each other then this can lead to you not getting the coffee flavor you would like.

Using coffee beans



- When the bean container is completely full, you can brew enough coffee for 10 cups 2 or 3 times. Roasted

coffee beans lose their flavor. Only fill coffee beans in the container which will be used within a few days.

- Open the bean container lid and fill it with coffee beans. Then close the lid.

Note: To ensure the grinder functions perfectly do not use caramelised coffee beans. Do not put ground coffee in the bean container.

- Open the swivel filter j to the left.
- Fold a Melitta® 1×4® coffee filter at the embossed seams and place it in the filter holder k. Use your hand to press the filter in to ensure the best fit.
- Swivel the filter back into the appliance. An audible click indicates that the filter is in place.
- Turn the grind dial l, to select the required grind level (from fine to coarse). The grind dial allows you to select from 3 different settings. Settings between the symbols are also possible. The 'fine' setting is for standard coffee. This setting may give the coffee a slightly bitter character. If a coarser setting is selected the coffee will be less bitter.
- Press the button to select coffee strength m. The selected coffee strength is shown in the display b. One coffee bean is for mild, two beans for medium and three beans for strong.
- Turn the appliance on using the start button ON/OFF d. Coffee preparation begins and the green LED flashes.
- If you hear three warning tones when starting the grinding process or when programming the timer and the display shows three flashing beans, the bean container is not completely in place. If this happens please reinsert the bean container as described in point 7.

Note: The appliance has an overload safety function of the grinder, which protects the grinder against damage by foreign objects in the coffee beans. If you hear a loud chattering, unknown noise during the grinding process, switch the appliance off d and clean the grinder as described in point 7.

- When the coffee is ready the green LED d is illuminated but stops flashing. The hot plate keeps your coffee warm and switches off automatically after the time you have set (see point 4). This avoids the unnecessary use of electricity and saves energy. You can of course turn the appliance off manually at any time d.
- The drip stop n prevents coffee dripping when you remove the jug from the appliance.
- The used coffee filter can be disposed of simply and easily using the removable filter insert.

Additional note to clause 5.1

Melitta has no influence on possible foreign objects between the roasted coffee beans. As described in clause 5.1 of the manual the grinder is equipped with an overload protection. With this damages of the grinder due to foreign objects shall be avoided. Rarely the overload protection will not be activated. The motor stops and there is no grinding sound to hear after switch on. In this case the appliance must be switched off immediately. A repeated switch on should be avoided. Clean the grinder as described in clause 7. of the manual. After that the appliance is ready for use again.

Using ground coffee

- To use ground coffee select the ground coffee setting o.
- Open the swivel filter to the left j.
- Fold a Melitta® 1×4® coffee filter at the embossed seams and place it in the filter holder k. Use your hand to press the filter in to ensure the best fit.
- Put the ground coffee in the coffee filter. The amount of coffee you use depends on your personal taste. We recommend using 6-8 g of ground coffee per cup.
- Swivel the filter back into the appliance. An audible click indicates that the filter is in place.

- Turn the appliance on using the start button ON/OFF d. Coffee preparation begins and the green LED flashes.
- When the coffee is ready the green LED d is illuminated but stops flashing. The hot plate keeps your coffee warm and switches off automatically after the time you have set (see point 4). This avoids the unnecessary use of electricity and saves energy. You can of course turn the appliance off manually at any time.
- The drip stop n prevents coffee from dripping when you remove the jug from the appliance.
- The used coffee filter can be disposed of simply and easily using the removable filter insert.

Timer Feature

The appliance is equipped with a TIMER. This allows you to start brewing coffee automatically at the time you set.

- Prepare the appliance as described in point 5. 'coffee preparation' but without pressing the start button ON/OFF d.
- To set the required start time, hold down the TIMER button p. The first time you set it, the time indicator and the clock symbol will flash in the display b. Set the required start time by repeatedly pressing the H and M buttons b. It is possible to speed this up by holding in the respective button.
- Two seconds after you let go of the TIMER button the current time will be displayed again. The start time you selected is saved until a new time is selected or the appliance is removed from the power supply.
- Pressing the TIMER button p briefly activates the timer feature for automatic coffee preparation. The start time you set appears briefly in the display b. The clock symbol in the display b and the white LED are illuminated p.
- The appliance starts preparing coffee automatically at the time you set.
- If you do not remove the appliance from the mains electricity or program a new start time then the time previously set is saved.
- The TIMER feature can be deactivated at any time by pressing the TIMER button p. The white LED p and the clock symbol b are no longer illuminated.

Cleaning and care

External cleaning:

- The housing and the water tank can be cleaned with a soft, damp cloth.
- The glass jug and lid and the filter insert are dishwasher safe.
- The hotplate can be cleaned with a soft, damp cloth when it is cold.

For the best coffee flavor we recommend cleaning the bean container, the grinder and the ground coffee chute regularly. This is easiest when the bean container and the grinder are completely empty.

Remove bean container:

- Turn the bean container anti-clockwise until the triangular indicators are aligned.
- Remove the bean container from the appliance and empty it completely.
- Put the bean container in place:
- Align the triangular indicators.
- Lightly press down on the bean container and turn it clockwise until it clicks into place.
- Put a coffee filter in the filter holder.

- Empty the grinder completely:
- Set the appliance at 2 cups and one coffee bean.
- Press the start button ON/OFF and allow the appliance to grind until empty.
- After grinding use the ON/OFF button to turn the appliance off.
- Remove the bean container again as described above.

Clean the grinder:

- Turn the grind level dial to 'Open'.
- Lift up the bracket and pull the grinder ring out of the grinder.
- Clean the grinder with the cleaning brush provided.
- To completely remove ground coffee deposits we recommend using a vacuum cleaner.
- Open the swivel filter and dispose of the coffee filter.

Clean the ground coffee chute:

- Holding the appliance in both hands carefully lay it on its back.
- Now you can firstly clean the area above the swivel filter with the brush and a damp cloth.
- To open the ground coffee chute hold down the button for ground coffee for 5 seconds.
- The ground coffee chute flap opens and the chute can be cleaned with the brush.
- To close the flap on the ground coffee chute hold down the button for ground coffee for 5 seconds.
- Put the swivel filter back in place and stand the appliance up again.
- Put the grinder ring back in place and close down the bracket again.
- Turn the grind level dial back into a grind position.
- Put the bean container in place again as described

Descaling:

- Based on the water hardness you have set (see point 3) the appliance should be descaled soon after the CALC indicator lights up.
- Measure out the descaling fluid according to the manufacturer's instructions and pour it into the water tank. We recommend using Melitta® "Anti Calc Liquid for Filter Coffee & Aqua Machines".
- Briefly press the CALC button. The red LED starts to flash.
- The current time and 'CALC' appear alternately in the display.
- The descaling process runs automatically. To remove even heavy calcification the descaling process takes about 25 minutes.
- **Attention:** Only by running the complete descaling process can all limescale deposits be removed. Only then does the Calc LED go off. Therefore the descaling process should not be interrupted.
- After the descaling process has been completed the light in the CALC button goes off. The appliance turns off automatically.
- To completely remove any deposits from descaling, the appliance must be rinsed twice with the maximum amount of water without coffee, after the descaling process has ended. Proceed as described in point 2.

Note on disposal

- Appliances labeled with this symbol are subject to European guidelines for WEEE (Waste Electrical and Electronic Equipment).
- Electric appliances do not go in the household bin. Dispose of the appliance in an environmentally friendly way using suitable collection systems.
- Packaging materials are raw materials and can be recycled. Please recycle them.

Guarantee

Terms of Guarantee

In addition to the legal guarantee claims, to which the end user is entitled relative to the seller, for this device, if it was purchased from a dealer authorized by Melitta® due to his consulting competence, we grant a manufacturer's guarantee under the following conditions:

1. The guarantee period begins on the day the product was sold to the end user. The guarantee is 36 months. The purchase date of the device must be verified by a purchase receipt.
2. The device was designed and built for household use only. It is not dedicated to commercial use. Guarantee performances lead neither to an extension of the guarantee period nor to a new beginning of the guarantee period for the device or installed spare parts.
3. Within the guarantee period, we will correct all device defects that are based on material or manufacturing errors, through repair or replacement of the device at our discretion. Replace parts become the property of Melitta®.
4. Defects that occurred due to improper connection, improper handling, or repair attempts by unauthorized persons are not covered by the guarantee. The same applies for failure to comply with the use, care, and maintenance instructions as well for the use of consumables (e.g. cleaning and decalcifying agents or water filters) that do not correspond to the original specifications. Wear parts (e.g. seals and valves) and fragile parts like glass are excluded from the guarantee.
5. Guarantee performances are processed via the Service Hotlines for the respective country (see information below).
6. These guarantee conditions apply for devices purchased and used in the UK. If devices are purchased in foreign countries or brought into foreign countries, then guarantee performances will only be provided as specified in the guarantee conditions applicable for this country.


Melitta UK Ltd.

Hortonwood 45 Telford, Shropshire, TF1 7FA United Kingdom

Tel: +44(0)800 0288002



www.melitta.co.uk

	<p>Melitta 3325V0875-06 AromaFresh Grind and Brew Filter Coffee Machine [pdf] Instruction Manual</p> <p>3325V0875-06 AromaFresh Grind and Brew Filter Coffee Machine, 3325V0875-06, AromaFresh Grind and Brew Filter Coffee Machine, Grind and Brew Filter Coffee Machine, Brew Filter Coffee Machine, Filter Coffee Machine, Coffee Machine, Machine</p>
--	--

References

-  [Melitta® Online Shop | Melitta® Online Shop](#)
-  [Servis elektroniky, opravy elektrospotřebičů, elektro servis - BELS cz s.r.o.](#)
-  [Melitta® Online Shop](#)
-  [Passionate About Coffee | Melitta®](#)
-  [Melitta® Online Shop | Melitta® Online Shop](#)
-  [Melitta® Online Shop](#)
-  [Cafeteras automáticas, de goteo y accesorios para café | Melitta®](#)
-  [Melitta® Boutique en ligne](#)
-  [Melitta® Online Shop](#)
-  [Melitta® Online Shop](#)