



Melitta 1100144-04 EasyTop Timer Filter Coffee Machine User Manual

[Home](#) » [Melitta](#) » Melitta 1100144-04 EasyTop Timer Filter Coffee Machine User Manual 

Melitta 1100144-04 EasyTop Timer Filter Coffee Machine



Dear customer,

Thank you for buying our Easy Timer filter coffee maker. We hope you will be very happy with it. If you need further information or if you have any questions please contact Melitta® or visit us on the Internet at www.international.melitta.de

Contents

- 1 For your safety
- 2 Safety notice
- 3 Before first use
- 4 Setting the hotplate
- 5 Making coffee
- 6 Timer Feature
- 7 Cleaning and maintenance
 - 7.1 External cleaning
- 8 Terms of guarantee
- 9 Documents / Resources
 - 9.1 References
- 10 Related Posts

For your safety



The appliance complies with all valid European guidelines.



The appliance complies with all valid United Kingdom guidelines.

The appliance has been tested and certified by an independent test institute.

Please read the safety notes and the operating manual in full. To avoid danger you must pay attention to the safety and operating instructions. Melitta® is not liable for damage caused by ignoring these instructions.

Safety notice

This appliance is intended for use in households and similar areas, such as –

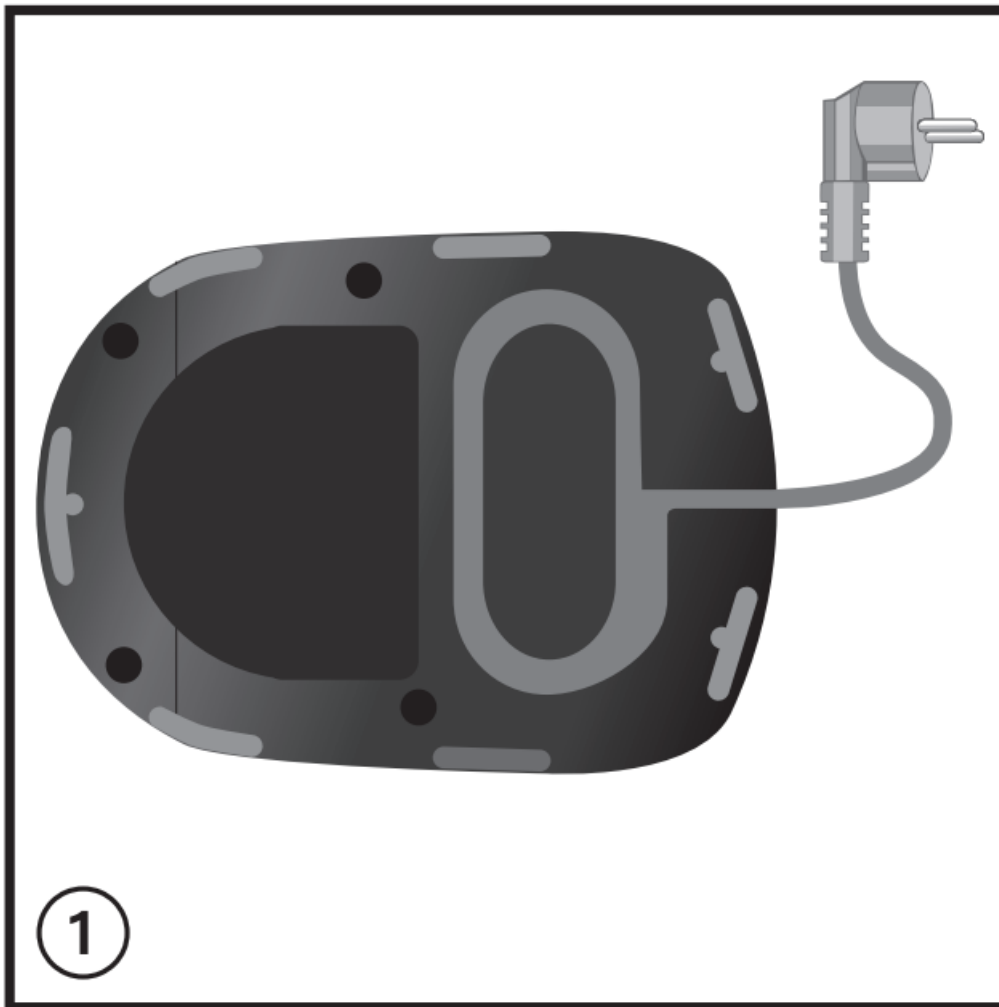
- in kitchens for employees in shops, offices and other commercial areas
- in agricultural establishments
- in motels, hotels and other residential facilities and bed and breakfast establishments Any other use is considered to be improper use and may result in personal injury or damage to property. Melitta® is not liable for damage caused by improper use. Please observe the following instructions to avoid injuries in case of misuse:
- The appliance must not be placed in a cupboard during operation.
- Connect the appliance only to a properly installed earthed socket.
- The appliance must always be disconnected from the power supply when unsupervised and before assembly, disassembly or cleaning.
- During operation, parts of the appliance such as the steam outlet at the filter become very hot. Avoid touching these parts and avoid contact with hot steam.
- Do not open the filter holder during brewing.
- The hotplate becomes very hot during use and remains hot for a long time after the brewing process. Contact with the hot plate can cause burns, so avoid touching it.
- Make sure that the power cable does not touch the hot plate.
- Do not use the appliance if the power cable is damaged.
- Do not allow the power cable to come into contact with liquids.
- Never immerse the appliance in water.
- Do not use the jug in the microwave
- Do not clean the parts that come into contact with food with aggressive cleaning agents or scouring cream. Remove detergent residues with clean water. Further information on cleaning can be found under “Cleaning and care”.
- This appliance can be used by children from 8 years of age or older if they are supervised or have been instructed in the safe use of the equipment and have understood the potential hazards. Cleaning and maintenance must not be carried out by children, unless they are 8 years or older and are supervised. Keep the appliance and the power cable away from children under 8 years of age.
- The appliance may be used by persons with reduced physical, sensory or mental abilities or lack of experience

and/or knowledge if they are supervised or have been instructed in the safe use of the appliance and have understood the potential hazards.

- Children must not play with the appliance
- Replacement of the power cable and all other repairs may only be carried out by Melitta® Customer Service or by an authorised repair shop.

Before first use

- Ensure that the power supply in your home corresponds to that on the model plate on the base of the appliance.
- Connect the appliance to a power source. Unused cable can be stored in the base of the appliance ① .



- Set the current time using the buttons “h” and “m” ② . This goes faster if you hold down the button. The appliance is only ready to use once the time has been set. You can turn the display light on or off by simultaneously pressing the h and m buttons ② for longer than two seconds.

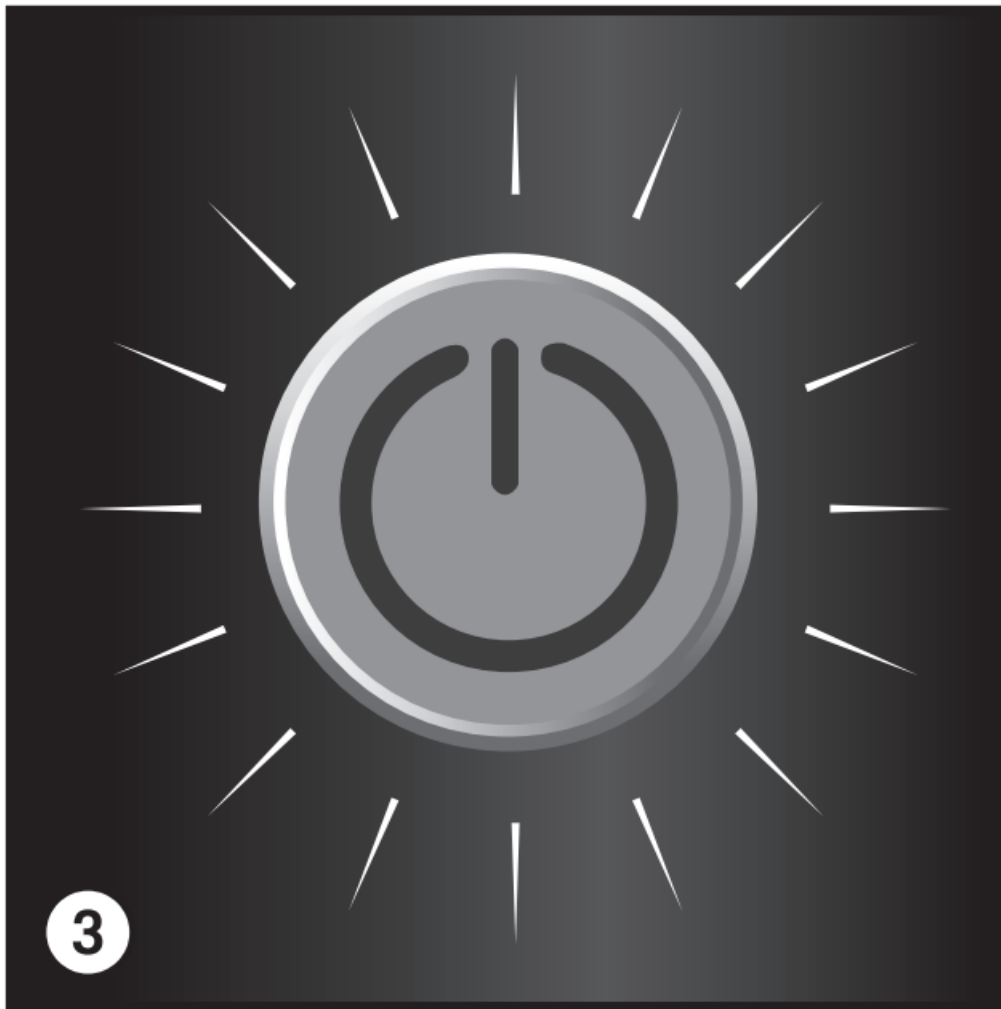


- All appliances have been tested during production to ensure they work perfectly. Therefore there may be for example water deposits remaining. Rinse the appliance twice with the maximum amount of water and without a filter bag or ground coffee, in order to clean it.
- For the best coffee enjoyment and convenient use, the appliance is equipped with various features. These features are explained below.

Setting the hotplate

Keeping coffee warm on the hotplate affects the taste of your coffee. To avoid this you should enjoy your coffee fresh, by drinking it as soon after brewing as possible. Unnecessary warming also uses valuable energy. The factory settings for the appliance are for 40 minutes of warming. After this the hotplate turns off automatically. This time can be changed as needed:

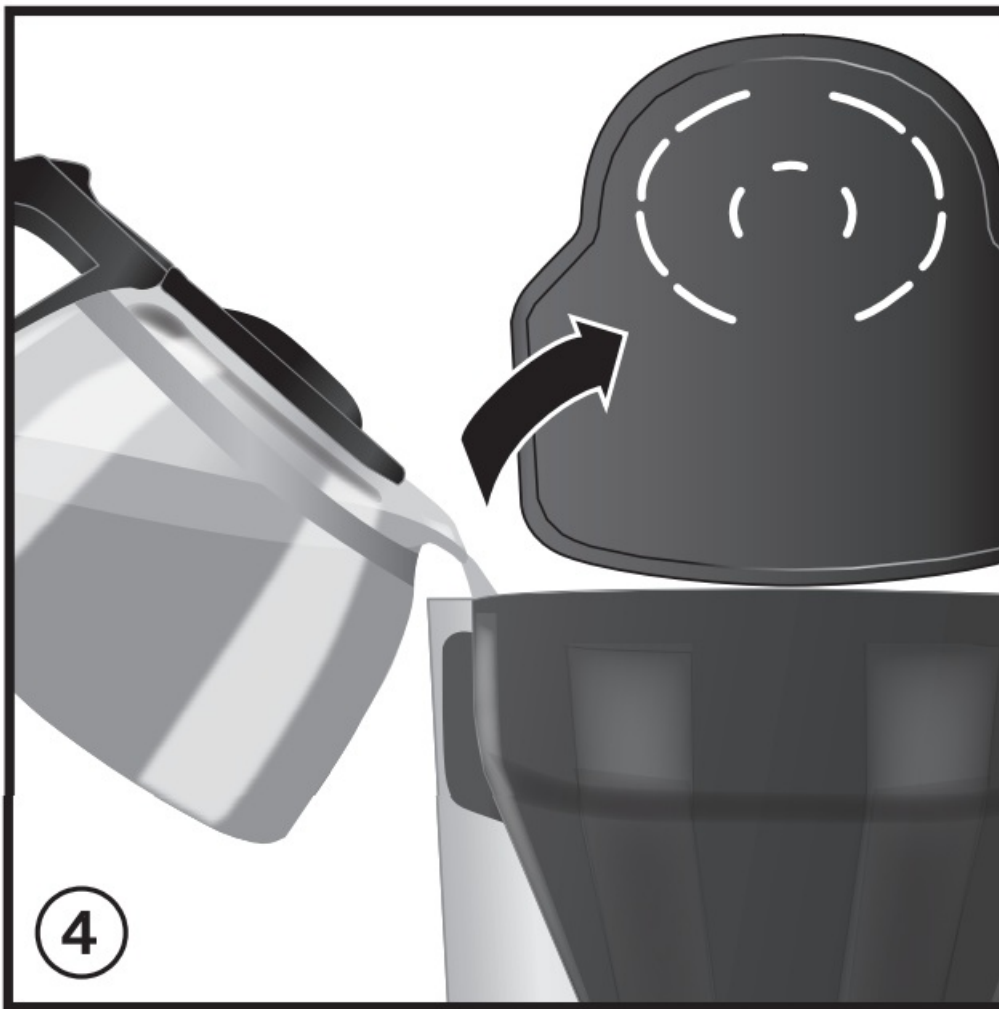
- Hold down the START-button ③ and by briefly pressing the h-button ② set the desired time (20, 40 or 60 minutes). The current warming time will be shown in the display ② .



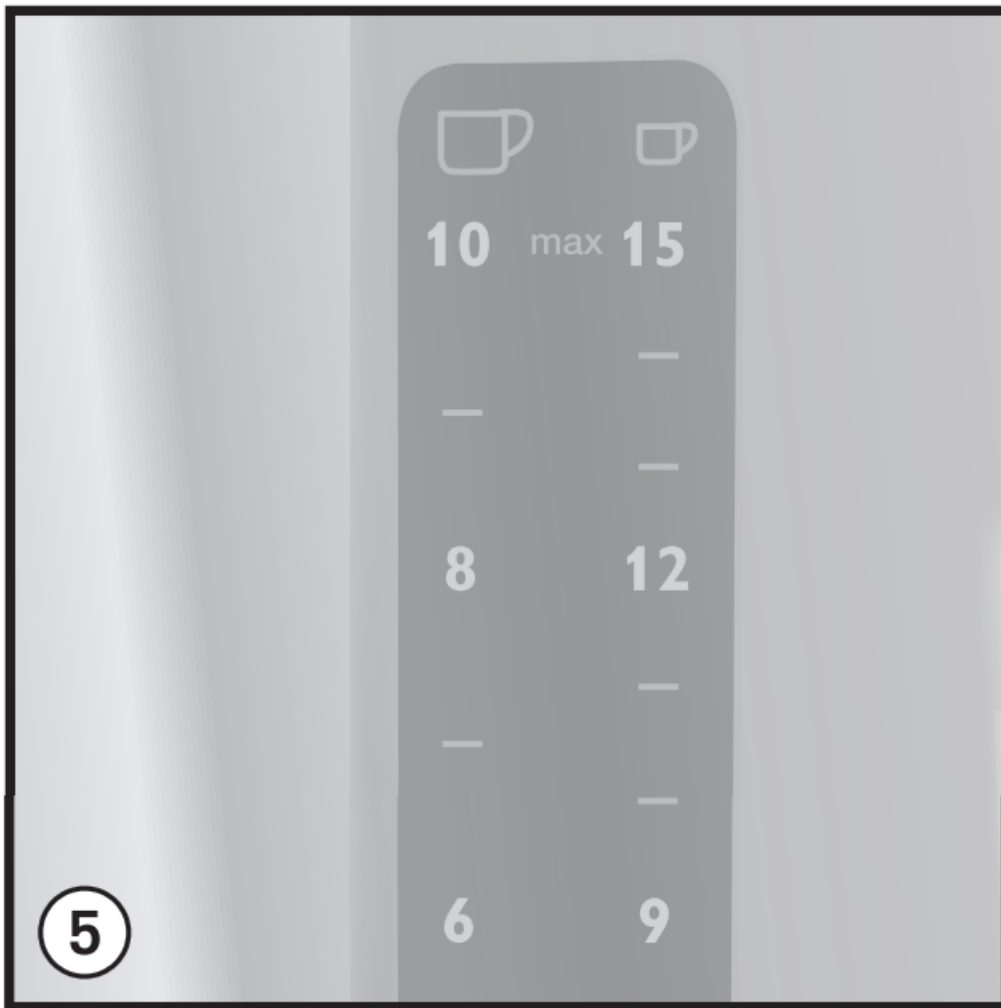
- Once you have set the desired warming time let go of the button. Your setting is now saved.
- The last setting chosen remains even after removing the power cable.

Making coffee

- Ensure that the appliance is connected to the power source.
- Open the lid on the water tank ④ .



- Fill the water tank with the desired amount of water using the glass pot. With the help of the water level display on the tank ⑤ you can choose the correct number of cups. Small cup symbol = approx. 85 ml coffee per cup, large cup symbol = approx. 125 ml coffee per cup.



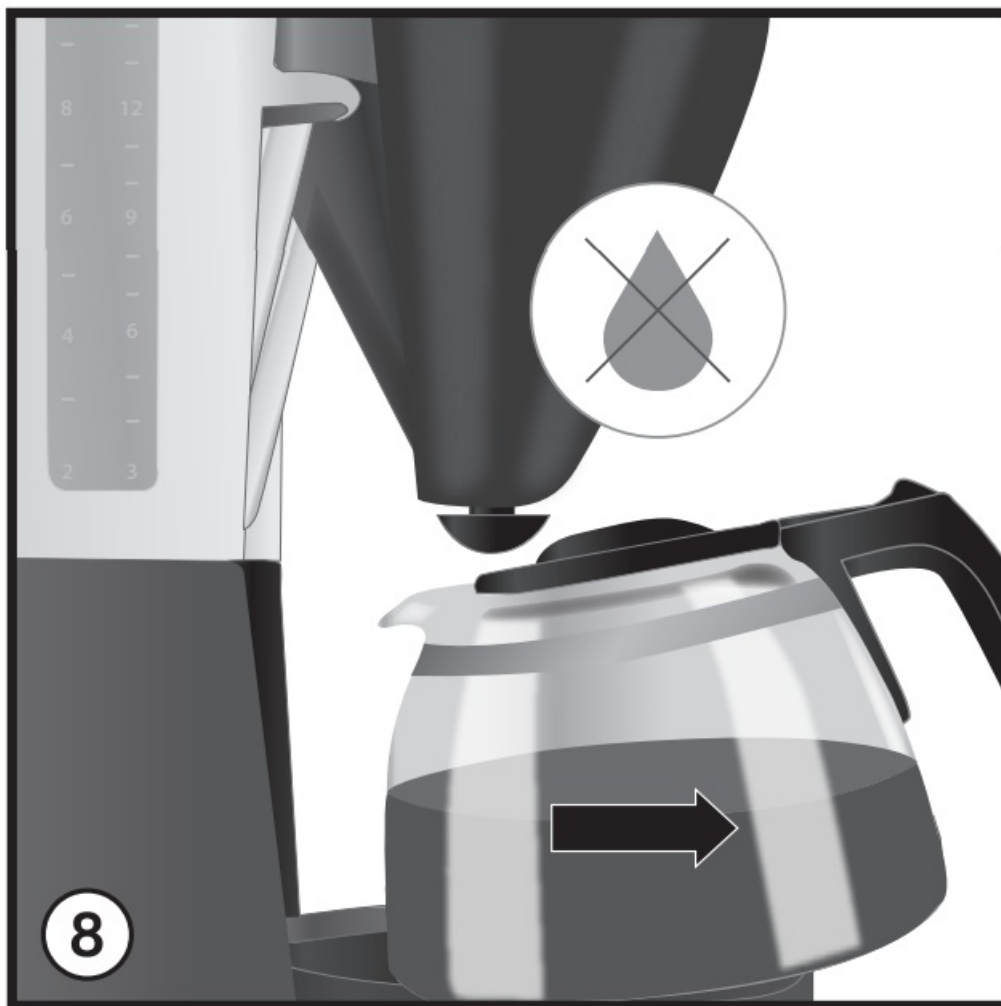
- Close the lid on the water tank and place the glass pot with closed lid in the appliance.
- Open the swivel filter ⑥ to the left.



- Fold a Melitta® filter bag 1×4® at the embossed seam and place it in the filter holder ⑦. Press the filter bag into the filter holder by hand, to ensure a good fit.



- Put the ground coffee into the filter. The amount depends on your personal taste. We recommend using 6-8 g of ground coffee per large cup.
- Swivel the filter back into the appliance.
- Turn the appliance on ③ . Brewing begins.
- After making your coffee the hotplate will keep it warm and will turn off automatically after the time you have set (see point 3). This avoids unnecessary use of electricity and saves energy. You can of course turn the machine off manually at any time.
- The drip stop prevents your coffee from dripping when you remove the pot from the appliance ⑧ .



Timer Feature

The appliance is equipped with a TIMER feature. This starts the brewing process at a time you programme.

- Prepare the appliance as described in point 4 'making coffee', but without pressing the START button.
- To set the desired start time, hold down the TIMER button ⑨ . The first time you programme it the display will show 00:00. While setting the timer the word 'timer' appears in the display.
- Set the desired start time by repeatedly pressing the h and m buttons ② . This goes faster if you hold down the button.
- After letting go of the TIMER button the current time will show. The chosen start time is saved until you set a different time or remove the appliance from the power source.
- By briefly pressing the TIMER button ⑨ the timer feature is activated for the next brewing process. To show this the TIMER button ⑨ is illuminated and the programmed start time shows briefly in the display ② .
- The appliance automatically starts to make coffee at the time you have set.
- As long as you do not remove the plug from the socket or set a new start time, the previous start time is saved.
- By briefly pressing the TIMER button ⑨ you can deactivate the timer feature at any time. The light in the TIMER button ⑨ goes off.
- If you want to make coffee before the start time you have programmed, press the START button ③ . The TIMER feature will be deactivated.

Cleaning and maintenance

External cleaning

- The housing can be cleaned with a soft damp cloth.
- The glass pot and lid and the swivel filter ® can be washed in the dishwasher.
- When cold, the hotplate can be cleaned with a soft damp cloth.

Terms of guarantee

In addition to the legal guarantee claims, to which the end user is entitled relative to the seller, for this device, if it was purchased from a dealer authorized by Melitta® due to his consulting competence, we grant a manufacturer's guarantee under the following conditions:

1. The guarantee period begins with the day the product was sold to the end user. The guarantee is 24 months. The purchase date of the device must be verified by a purchase receipt. The device was designed and built for household use only. It is not dedicated for a commercial use. Guarantee performances lead neither to an extension of the guarantee period nor to a new beginning of the guarantee period for the device or installed spare parts.
2. Within the guarantee period we will correct all device defects that are based on material or manufacturing errors, through repair or replacement of the device at our discretion. Replace parts become the property of Melitta®.
3. Defects that occurred due to improper connection, improper handling, or repair attempts by nonauthorized persons are not covered by the guarantee. The same applies for failure to comply with the use, care, and maintenance instructions as well for the use of consumables (e.g. cleaning and decalcifying agents or waterfilters) that do not correspond to the original specifications. Wear parts (e.g. seals and valves) and fragile parts like glass are excluded from the guarantee.
4. Guarantee performances are processed via the Service Hotlines for the respective country (see information below).
5. These guarantee conditions apply for devices purchased and used in UK. If devices are purchased in foreign countries or brought into foreign countries, then guarantee performances will only be provided as specified in the guarantee conditions applicable for this country.


Melitta UK Ltd.



Hortonwood 45
Telford, Shropshire, TF1 7FA
United Kingdom
Tel: +44(0)800 0288002
www.melitta.co.uk



Documents / Resources

	<p>Melitta 1100144-04 EasyTop Timer Filter Coffee Machine [pdf] User Manual 1100144-04 EasyTop Timer Filter Coffee Machine, 1100144-04, EasyTop Timer Filter Coffee Machine, Filter Coffee Machine, Coffee Machine, Machine</p>
------------------------------------------------------------------------------------	-----------------------------------------------------------------------------------------------------------------------------------------------------------------------------------------------------------------------------------------------------

References

-  [Melitta® Online Shop | Melitta® Online Shop](#)
-  [Servis elektroniky, opravy elektrospotřebičů, elektro servis - BELS cz s.r.o.](#)
-  [Melitta® Online Shop](#)
-  [Passionate About Coffee | Melitta®](#)
-  [Melitta® Online Shop | Melitta® Online Shop](#)
-  [Melitta® Online Shop](#)
-  [Cafeteras automáticas, de goteo y accesorios para café | Melitta®](#)
-  [Melitta® Boutique en ligne](#)
-  [Melitta® Online Shop](#)
-  [Melitta® Online Shop](#)