



Melitta 1100079-02 Look Therm Timer Filter Coffee Machine Instruction Manual

[Home](#) » [Melitta](#) » Melitta 1100079-02 Look Therm Timer Filter Coffee Machine Instruction Manual 



Operating Instructions
1100079-02

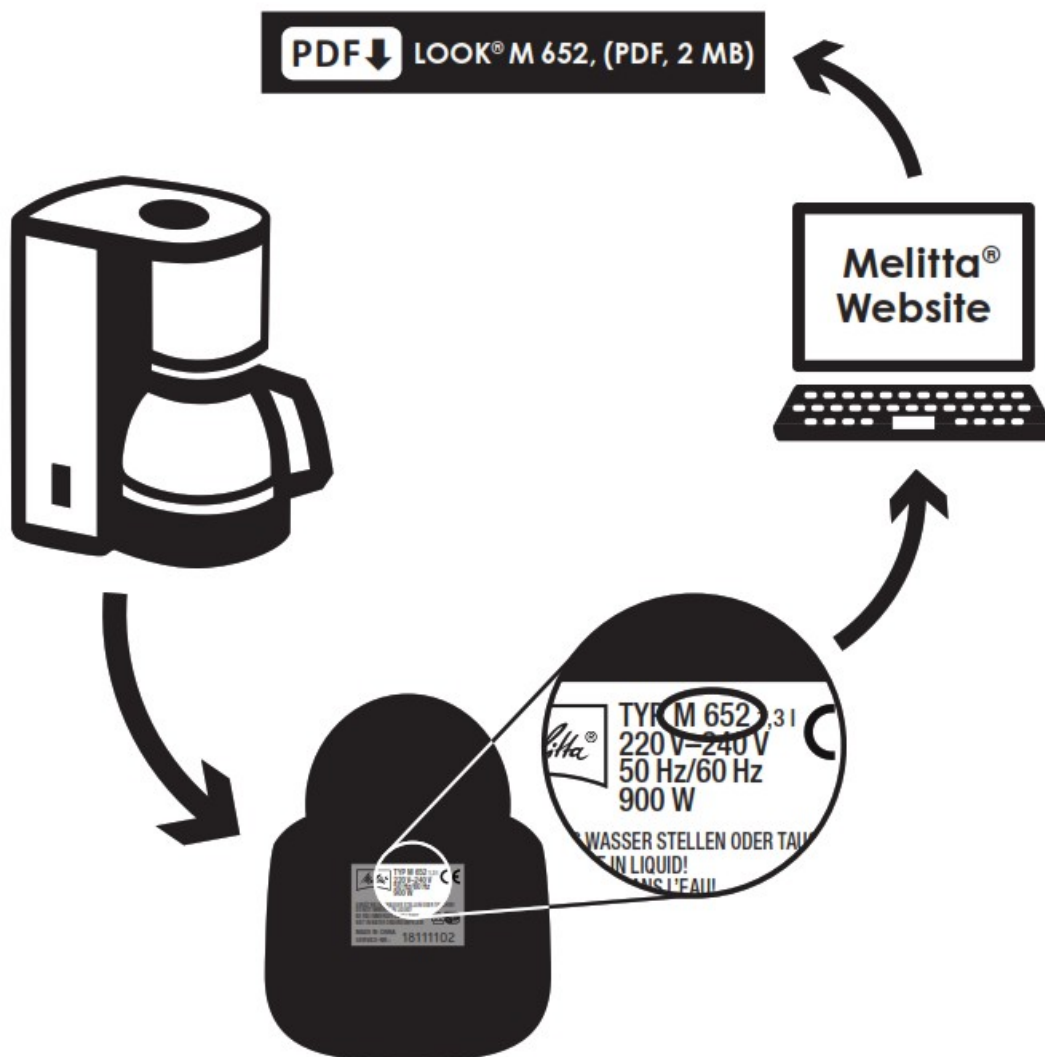
Contents

- 1 1100079-02 Look Therm Timer Filter Coffee Machine
- 2 Safety notice
- 3 Before preparing first cup of coffee
- 4 Coffee Preparation
- 5 Cleaning and maintenance
- 6 Therm jugs generally:
- 7 Therm jug with glass flask inside:
- 8 Terms of guarantee
- 9 Documents / Resources
 - 9.1 References

1100079-02 Look Therm Timer Filter Coffee Machine

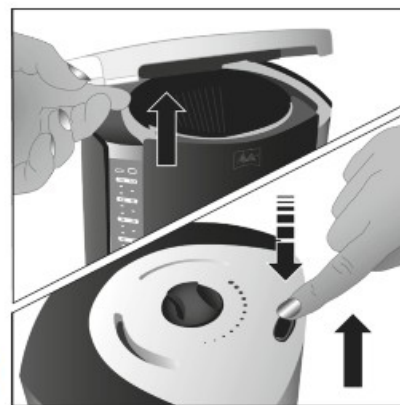
Matching user manual for your filter coffee maker

Example

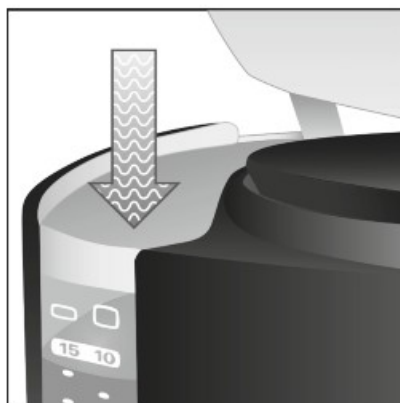




①



②



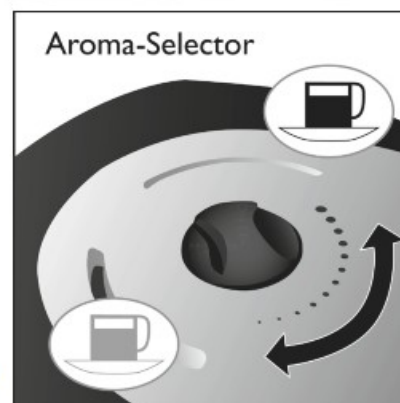
③



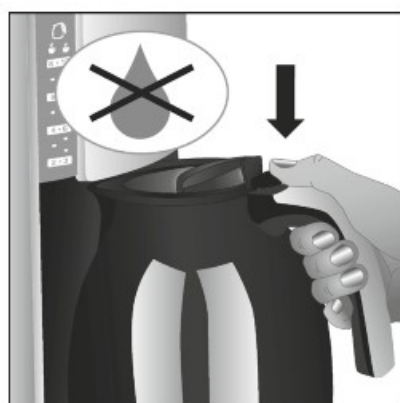
④



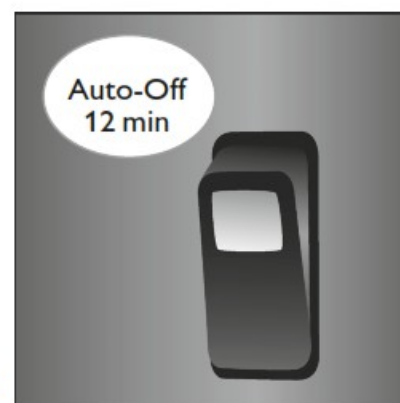
⑤



⑥



⑦



⑧

Safety notice

- The appliance is suitable for use in private households or for preparing coffee in amounts usual in private households. All other use is contrary to that intended and can lead to injury or damage. Melitta® is not liable for damage caused by using the appliance in ways other than that intended.
- The appliance must not be kept in a cupboard when in use.

- Connect the appliance only to a correctly installed socket.
- Disconnect the device from mains power when it is being cleaned or is not being used for longer periods.
- During brewing very hot steam is released from the filter. Do not touch this part and avoid contact with the hot steam.
- Do not open the filter while brewing.
- Do not use the appliance if the power cable is damaged.
- Never immerse the appliance in water.
- Do not let the power cable come into contact with water.
- Do not use the pot in the microwave.
- Do not clean parts which come into contact with water or coffee (e.g. water tank, filter, coffee pot) with abrasive cleaning materials or scouring cream. Remove detergent residues with clean water.
- This appliance can be used by children who are 8 years old or over, if they are supervised or have been instructed in the safe use of the appliance and have understood the dangers associated with it. Cleaning and maintenance of the appliance should not be undertaken by children unless they are 8 years old or over and are supervised. The appliance and power cable should be kept away from children under 8 years old.
- The appliance can be used by people with limited physical, sensory or mental aptitude, or who have limited experience or knowledge, if they are supervised or instructed in how to use the appliance safely and have understood the dangers involved in using it.
- Children must not play with the appliance.
- Replacement of the power cable and all other repairs should only be carried out by Melitta Customer Service personnel.

Before preparing first cup of coffee

- Read operating and safety instructions carefully!
- Check voltage in your home (has to correspond with information at the bottom of the coffeemaker).
- Insert plug – cord can be lengthened or shortened by using the cable storage (1).
- Clean inner parts of coffeemaker by two complete brewing processes only with clear water (see “Coffee Preparation” Point 1 – 8, but without using filterbag and coffee).

Coffee Preparation

1. Open the filterlid (2).
2. Fill in needed amount of fresh, cold water into the watertank (3). By means of cup scale on the watertank (4) you can define the desired amount of cups (small cup symbol = 90ml ready coffee per cup, big cupsymbol = 125ml ready coffee per cup).
3. Fold a Melitta® filterbag size 1×4® and place it in the filter (5).
4. Fill needed amount of ground coffee (recommendation: 1 measuring spoon = 6g per cup) into the filter.
5. Close the filterlid.
6. Only LOOK De Luxe: by using the Aroma-Selector you can choose the coffee result – from mild to strong – to your personal taste (6).
7. Place the therm jug with the lid into the appliance. Drip-stop (7) is opened. Jug lid is needed to activate the drip stop. Using the jug without the lid the drip stop did not work, this may result in overflows.
8. Switch on the appliance – on/off switch lights up (8). The brewing process starts.

9. LOOK is equipped with an auto-shut-off function – appliances shuts off after 15 min. automatically.
10. For pouring out coffee press lever on the jug lid. Switch appliance off between two brewing cycles and leave it to cool down for approx. 5 minutes.

Cleaning and maintenance

- Before cleaning always remove plug from socket.
- Never immerse appliance or cord in water.
- Use a soft damp cloth to clean the exterior.
- Filter insert is dishwasher proof.
- Descaling: Regularly descaling ensures perfect operation we recommend to descale the appliance after every 40 filtrations. Prepare and use descaler as advised on the package by the descaler manufacturer.

Therm jugs generally:

- Never immerse jug in water oar clean it in dishwasher! Rinse with hot water only after each use.
- Clean tenacious staining with special cleaner.
- Use a soft damp cloth to clean the exterior.
- Not lay down the filled jug, liquid may come out.
- Do not place the jug on a hotplate.
- Do not use the jug in microwave-oven.
- Do not use jug for storage of milk products or baby food, bacteria may develop.

Therm jug with glass flask inside:

- Avoid extreme variations in temperature.
- Never stir jug content with metal spoon, do not fill in ice-cubes or carbonated drinks to avoid damages of glass insert.
- After fall down or heavier shocks glass insert may break. Do not drink the content because glass splitters may be inside.

Terms of guarantee

In addition to the legal guarantee claims, to which the end user is entitled relative to the seller, for this device, if it was purchased from a dealer authorized by Melitta® due to his consulting competence, we grant a manufacturer's guarantee under the following conditions:

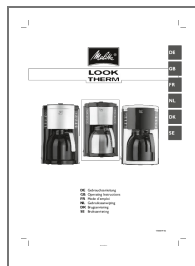
1. The guarantee period begins with the day the product was sold to the end user. The guarantee is 24 months. The purchase date of the device must be verified by a purchase receipt. The device was designed and built for household use only. It is not dedicated for a commercial use. Guarantee performances lead neither to an extension of the guarantee period nor to a new beginning of the guarantee period for the device or installed spare parts.
2. Within the guarantee period we will correct all device defects that are based on material or manufacturing errors, through repair or replacement of the device at our discretion. Replace parts become the property of Melitta® .

3. Defects that occurred due to improper connection, improper handling, or repair attempts by nonauthorized persons are not covered by the guarantee. The same applies for failure to comply with the use, care, and maintenance instructions as well for the use of consumables (e.g. cleaning and decalcifying agents or waterfilters) that do not correspond to the original specifications. Wear parts (e.g. seals and valves) and fragile parts like glass are excluded from the guarantee.
4. Guarantee performances are processed via the Service Hotlines for the respective country (see information below).
5. These guarantee conditions apply for devices purchased and used in UK. If devices are purchased in foreign countries or brought into foreign countries, then guarantee performances will only be provided as specified in the guarantee conditions applicable for this country.

Melitta International GmbH – UK Division
32 A Thorpe Wood Business Park
Thorpe Wood
Peterborough PE3 6SR
United Kingdom
UK Office: 0044 0 1733 260905
www.international.melitta.de

<https://manual-hub.com/>

Documents / Resources



[Melitta 1100079-02 Look Therm Timer Filter Coffee Machine](#) [pdf] Instruction Manual
1100079-02, 1100079-02 Look Therm Timer Filter Coffee Machine, Look Therm Timer Filter Coffee Machine, Timer Filter Coffee Machine, Filter Coffee Machine, Coffee Machine, Machine

References

- [Melitta® Online Shop](#)
- [Melitta® Online Shop](#)
- [Melitta® Online Shop](#)
- [Melitta® Online Shop](#)
- [Cafeteras automáticas, de goteo y accesorios para café | Melitta®](#)
- [Melitta® Boutique en ligne](#)
- [Melitta® Online Shop](#)
- [Melitta® Online Shop](#)
- [Manual-Hub.com - Free PDF manuals!](#)
- [User Manual](#)

Manuals+. Privacy Policy

This website is an independent publication and is neither affiliated with nor endorsed by any of the trademark owners. The "Bluetooth®" word mark and logos are registered trademarks owned by Bluetooth SIG, Inc. The "Wi-Fi®" word mark and logos are registered trademarks owned by the Wi-Fi Alliance. Any use of these marks on this website does not imply any affiliation with or endorsement.