

[Skip to content](#)

Manuals+

User Manuals Simplified.

MEIZE E0022 10.1 Inch Android 11 Octa Core Tablet User Guide



[Home](#) » [MEIZE](#) » MEIZE E0022 10.1 Inch Android 11 Octa Core Tablet User Guide

MEIZU 10.1 Inch Android Tablet User Guide



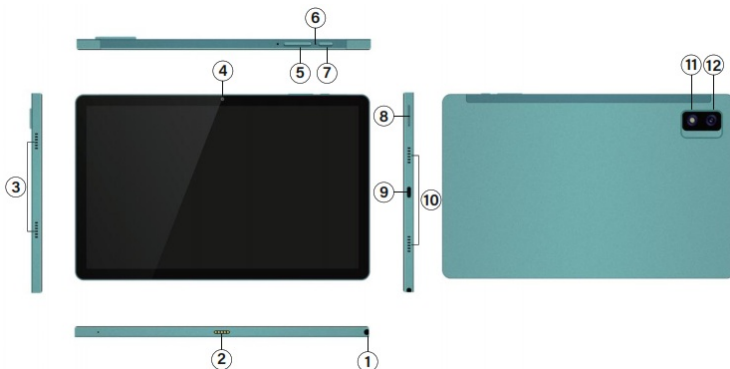
Contents [hide](#)

- [1 ATTENTION](#)
- [2 FUNCTION OVERVIEW](#)
- [3 SPECIFICATIONS](#)
- [4 START](#)
- [5 HOME SCREEN](#)
- [6 BASIC SETTINGS](#)
- [7 NETWORK CONNECTION](#)
- [8 APP MANAGEMENT](#)
- [9 INTERNET NAVIGATION](#)
- [10 MULTIMEDIA](#)
- [11 TROUBLESHOOTING](#)
- [12 Documents / Resources](#)
- [13 Related Posts](#)

ATTENTION

1. Before using the tablet, please read the manual of the tablet carefully, and operate it according to the requirements and specifications in the manual.
2. Use the charger that comes with the original machine to charge, do not replace other chargers casually. If the charger is damaged, replace it with a new regular charger (current voltage is 5V/2A).
3. When the tablet prompts for charging during use (the power is generally about 15%), it should be charged in time.
4. The duration of use should not exceed 3-4 hours. It is best not to use it while charging. (The body is in a state of constant heat for a long time, which may easily lead to the degradation of hardware performance, or accelerate the aging and damage of hardware).
5. When the tablet encounters a power failure during charging, you should unplug the tablet first.
6. Other items should not be placed on the tablet to avoid damage to the screen.
7. When the tablet is not in use, it should be placed on a stable desktop to avoid damage to the body due to accidental falls.
8. The tablet screen is afraid of squeezing and collision, please handle it with care. In addition, do not use fingernails or capacitive pens during use. Generally light touch, not heavy pressure.
9. When cleaning the tablet, do not directly rinse it with water, as the tablet that is not waterproof may be useless after washing.
10. The built-in electronic components of the tablet are afraid of moisture and water and must be kept away from high temperature, humidity, and dust. Please keep it in a dry place and avoid direct sunlight.

FUNCTION OVERVIEW



1. Headphone jack
2. Docking
3. Left speaker
4. Front camera
5. Volume+/Volume-
6. Reset the hole

7. Power on/off
8. Micro SD card&SIM card tray
9. USB-C port
10. Right speaker
11. Flash
12. Rear camera

SPECIFICATIONS

Tablet Specifications

Tablet Size	10.1"	Connectivity	Wi-Fi/Bluetooth
Power Supply	5V/2A	RAM	4GB
GPU	IMG GE8322	ROM	64GB
Display	1920x1200	360°4G	GSM/WCDMA/TD-SCDMA/LTE-TDD/LTE-FDD
Front-facing Camera	5MP	WiFi	802.11 a/b/g/n/ac 2.4GHz + 5GHz
Rear-facing Camera	13MP AF	CPU	SC9863A Octa-Core 1.6Ghz
Battery	6000mAh	Touchscreen	10-Point capacitive touch(G+G)
Operating System	Android 11	Ports	USB Type-C/Micro SD card/SIM card tray

START

Power On/Off

1. Hold down the power button for 2-3 seconds to turn on the tablet. Select the language and follow the start-up guide to set up the tablet.
2. Hold down the power button for 2 seconds to display power off and restart options on the screen. Click power off to turn off the tablet. 3. If the tablet freezes, press and hold the power button for 7 seconds to do a forced shutdown.

Battery

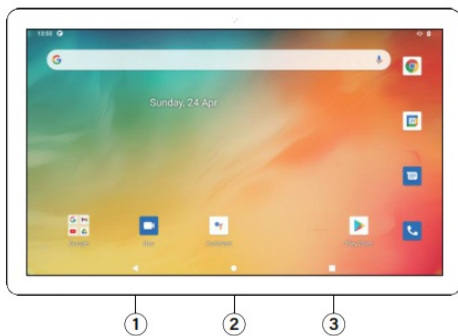
1. A rechargeable Li-ion battery is installed in the tablet.
2. We suggest you drain the battery completely once a month if you only use your tablet occasionally.
3. **DO NOT** dispose of tablet in fire.
4. Charge the device fully each time to increase the battery life.
5. You can charge the tablet, even if the tablet has some power left in it, as the lithium battery does not need to be fully drained to charge.
6. A full charge can be used for an average of 5-6 hours.

Sleep Mode

Simply press the power button once to switch the tablet into sleep mode when the tablet is ON; press again to wake it up. Tip: Go to Settings > Display > Screen timeout to adjust automatic sleep settings

HOME SCREEN

Icon on the Bottom Menu



1. Back
2. Home Screen
3. Recent Activities

Home settings, Wallpapers, Widgets

Home settings

Tap and hold your finger in any blank space on the home screen and a pop-up menu will appear. Tap HOME SETTINGS to enable/disable adding icons to the Home screen. This applies to new Apps installed from Play Store.

Wallpapers

Tap and hold your finger in any blank space on the home screen and a pop-up menu will appear. You can choose a wallpaper from the Gallery or your downloaded files. Set the one you like to be the wallpaper.

Widgets

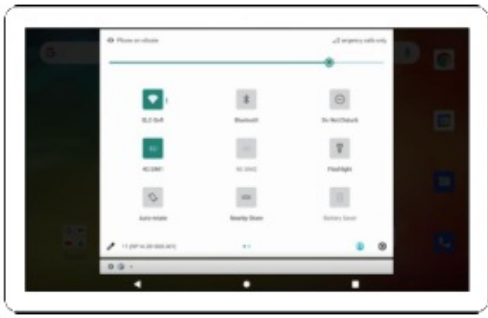
Tap and hold your finger in any blank space on the home screen and a pop-up menu will appear. Tap Widgets, then tap and hold the desired widget, drag the widget to the target homepage, and finish adding.


Tips

Tap an icon and move it on top of another icon to create a new folder on the home screen. Open the folder; tap 'Unnamed Folder' to rename the folder.

BASIC SETTINGS

Quick Settings



Swipe down from the top of the screen, then press and hold the icon at the top of the screen to swipe down. Tap the  icon to change the options in the quick settings.

More Settings

Swipe down from the top of the screen, then tap the @ icons to enter the detailed setting interface, swipe up from the bottom of the screen, and then tap the @ icon to enter the setting interface.



Network & Internet

- Connect to any working Wi-Fi
- Enable/disable airplane mode
- Hotspot & tethering

Connected Devices

- Connect the device and check the connected device
- Add and check printers

Apps & Notifications

- Check recently opened apps
- Check all apps on the tablet
- Set app permissions
- Uninstall third-party apps
- Adjust app notification settings
- Clear the cache for apps

Battery

- Display the remaining battery power as a percentage
- Enable/disable battery saver mode

Display

- Adjust the screen brightness
- Adjust the font size and display size
- Set a screensaver
- Change the wallpaper

Scheduled power on/off

- Set a scheduled start time
- Set a scheduled shutdown time

Sound

- Set volume levels for media, alarms, and notifications
- Set Do Not Disturb preferences
- Set the sounds for notifications and alarms
- Turn on/off the sound for screen lock, charging and touch

Storage

- View and manage your storage space

Privacy, Security, Location

- Set screen lock pattern. e.g. password. PIN, Swipe, etc
- Enable/disable all notifications while the screen is locked
- Turn on/off the location services for a specific app
- Set show/hide password when inputting a password

Accounts

- Add and manage the user accounts on your tablet

Accessibility

- For vision and hearing impaired users, manage settings for screen readers, subtitles (1-1-:

Digital Wellbeing & Parental Controls

- Set timers for your apps
- Set up parental controls with Google's Family link

Google

- Set the preferences for Google-related services

System

- Set Language
Tap Languages & input > Languages > + to add a language. After adding, hold and slide the = icon to the top to change the language
- Restore Factory Settings
Tap System > Advanced > Reset options > Erase all data (factory reset) to restore to factory settings
- Other Settings
Set the date and time Turn on/off the backup

About Tablet

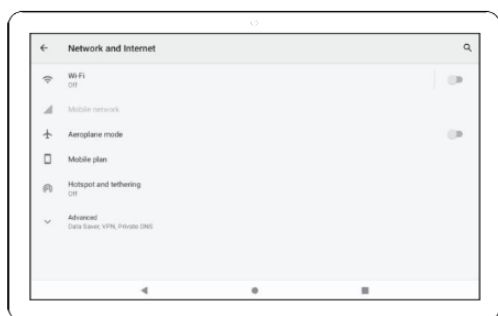
- Check detailed information about the tablet

NETWORK CONNECTION

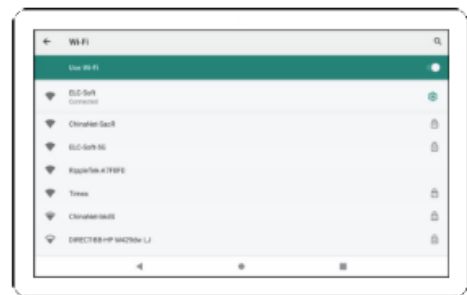
Go to Wi-Fi Settings in the Settings interface or directly enter through Quick Settings

Wi-Fi Connection

1. Go to Settings > Network and Internet > turn on the All available Wi-Fi connections will be listed



2. Select your Wi-Fi, and input the correct password.



APP MANAGEMENT

App Download and Installation

1. Tap and open Play Store on the Home screen.
2. Log into your Google account; search and download the apps you need.

Move an App

Tap and hold the app, then slide to the desired screen.

Remove an App from the Home screen

Tap and hold the App, then slide to the x to remove it from your home screen.

Uninstall an App

Tap and hold the app, then slide to the trash bin to uninstall the app.

Clear the App Cache

1. Go to Settings > Apps & notifications
2. Select an App > Storage & cache > CLEAR CACHE

INTERNET NAVIGATION

Please make sure the tablet is connected to a working Wi-Fi/4G network before trying to browse the Internet. You can use the Chrome browser that is pre-installed or download another browser from the Play Store.

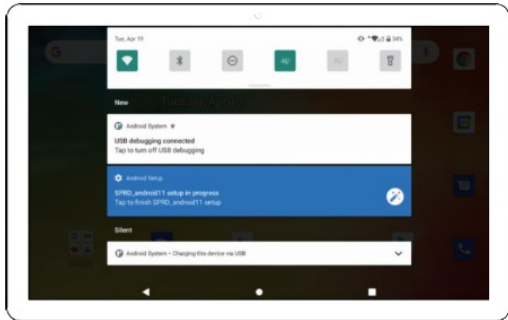
MULTIMEDIA

Connecting to the Computer

1. Connect your tablet to a computer via a USB type-c cable and go to Quick Settings.
2. Tap Android Systems > Charge this device via USB > Tap for more options > File Transfer-
3. Go to your computer and find the tablet to transfer files between your tablet and computer.

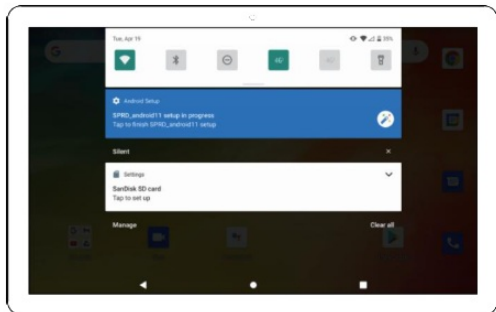
Tips

Select Charge this device if you only need to charge the tablet. Select Transfer photos (PTP) to transfer photos between the devices.

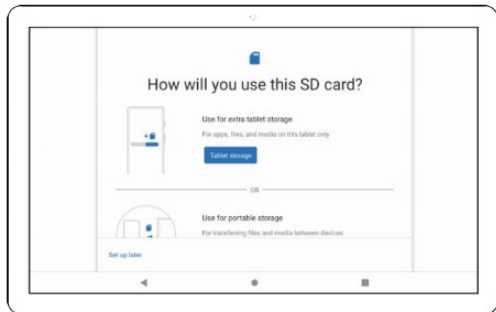


Connecting to an External Device

1. Insert a micro SD card into the micro SD card slot and go to Quick Settings.
2. Tap to set up.



3. Set the micro SD card as portable storage by selecting use for portable storage. Enter micro SD card storage to move files between the card and tablet.



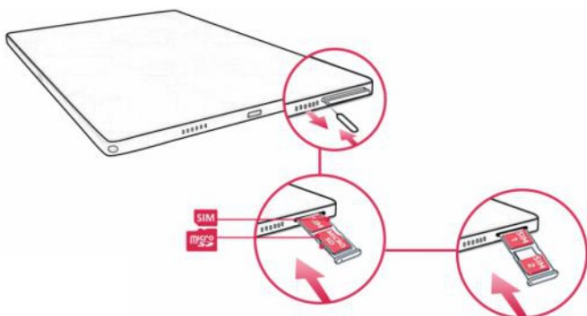
SIM Card

A tablet with a SIM card can:

- Provide Internet services and other functions that require an Internet connection, such as the functionality of certain apps and services.
- Receive Android OS updates when neither connected to Wi-Fi nor a tethered device.
- Make and receive calls
- Send and receive text messages

Insert SIM Card:

- Gently insert a paper clip or SIM card ejection tool into the hole next to the tray until the SIM card tray pops out of the tablet.
- Grab the SIM card tray and pull it straight out
- Insert the SIM card: Make sure the SIM card is installed in the correct orientation by aligning the notched corners on the card.
- Reinsert the tray. Make sure to insert the SIM card tray in the correct orientation.



How to use the 4G network

- Insert SIM Card
- Go to Settings > Network & internet > Mobile network > turn on Use SIM > Turn on Mobile data

TROUBLESHOOTING

Q1. The tablet can not be turned on

- Reboot your tablet after charging for 30 minutes
- Press the power button to see if the tablet is in Sleep Mode
- Press and hold the power button for 7 seconds to turn off the tablet, then turn on it
- Press the reset hole with a pin to reset the tablet

Q2. The tablet can not be charged

- Charge the device for at least 30 minutes, in case the battery was completely drained
- Make sure the USB cable is properly plugged into the charging port
- Try another compatible USB cable and adapter

Q3. Error message occurs during operation

- Uninstall the app displaying the error message, then download and install again
- Press the reset hole with a pin to reset the tablet

Q4. The tablet cannot be detected by the computer

- Make sure the tablet is powered on
- Try another USB cable
- Try another USB port on the computer
- Instead of Charge this device, choose Transfer files or Transfer photos (PTP) when connecting the tablet to the computer

Q5. The tablet cannot connect to the Wi-Fi

- Make sure the Wi-Fi on your tablet is powered on
- Make sure you input the correct password
- Reboot the router
- Make sure there is no filter setting or device connection limitation in the settings of the router
- Forget the current Wi-Fi, reset the router and connect to the network again

Q6. The storage space of the tablet is not enough

- Uninstall the apps you don't use
- Clear the app cache regularly
- Insert a micro SD card to expand the storage

FCC STATEMENT :

This device complies with Part 15 of the FCC Rules. Operation is subject to the following two conditions:

1. This device may not cause harmful interference
2. This device must accept any interference received, including interference that may cause undesired operation.

Warning: Changes or modifications not expressly approved by the party responsible for compliance could void the user's authority to operate the equipment.

NOTE: This equipment has been tested and found to comply with the limits for a Class B digital device, pursuant to Part 15 of the FCC Rules. These limits are designed to provide reasonable protection against harmful interference in a residential installation. This equipment generates uses and can radiate radio frequency energy if not installed and used in accordance with the instructions, may cause harmful interference to radio communications. However, there is no guarantee that interference will not occur in a particular installation. If this equipment does cause harmful interference to radio or television reception, which can be determined by turning the equipment off and on, the user is encouraged to try to correct the interference by one or more of the following measures:

Reorient or relocate the receiving antenna.

Increase the separation between the equipment and receiver.

Connect the equipment into an outlet on a circuit different from that to which the receiver is connected.

Consult the dealer or an experienced radio/TV technician for help.

RF warning statement:

The device has been evaluated to meet the general RF exposure requirements. The device can be used in portable exposure conditions without restriction.



This device complies with parts of the FCC rules. Operation is subject to the following two conditions:

This device will not cause harmful interference;

This device must accept any interference received, including interference that may cause undesired operation.



This product complies with the essential requirements of European safety regulations and has passed the product safety conformity assessment procedure. It also has a manufacturer's declaration of conformity to ensure that every product delivered to the customer is safe.

Android is a trademark of Google LLC

Specific Absorption Rate (SAR) information:

This Android Tablet meets the government's requirements for exposure to radio waves. The guidelines are based on standards that were developed by independent scientific organizations through periodic and thorough evaluations of scientific studies. The standards include a substantial safety margin designed to assure the safety of all persons regardless of age or health.

FCC RF Exposure Information and Statement

This radio is designed for and classified as "General population/uncontrolled Use", the guidelines are based on standards that were developed by independent scientific organizations through periodic and thorough evaluation of scientific studies. The standards include a substantial safety margin designed to assure the safety of all persons regardless of age or health. The exposure standard for wireless radio employs a unit of measurement known as the Specific Absorption Rate, or SAR, the SAR limit set at 1.6W/kg.

Body-worn operation; this device was tested for typical body-worn operations with the back of the handset kept at 0mm for body-worn. To maintain compliance with RF exposure requirements, use accessories that maintain a 0mm for body-worn. The use of belt clips, holsters, and similar accessories should not contain metallic components in their assembly. The use of accessories that do not satisfy these requirements may not comply with RF exposure requirements and should be avoided.

The highest reported SAR value for worn on the body is 1.184 W/kg.

Documents / Resources



[MEIZE E0022 10.1 Inch Android 11 Octa Core Tablet](#) [pdf] User Guide

E0022, 2ABC5-E0022, 2ABC5E0022, E0022, 10.1 Inch Android 11 Octa Core Tablet, E0022 10.1 Inch Android 11 Octa Core Tablet, Android 11 Octa Core Tablet, Octa Core Tablet, Tablet

Manuals:

- [home](#)
- [privacy](#)