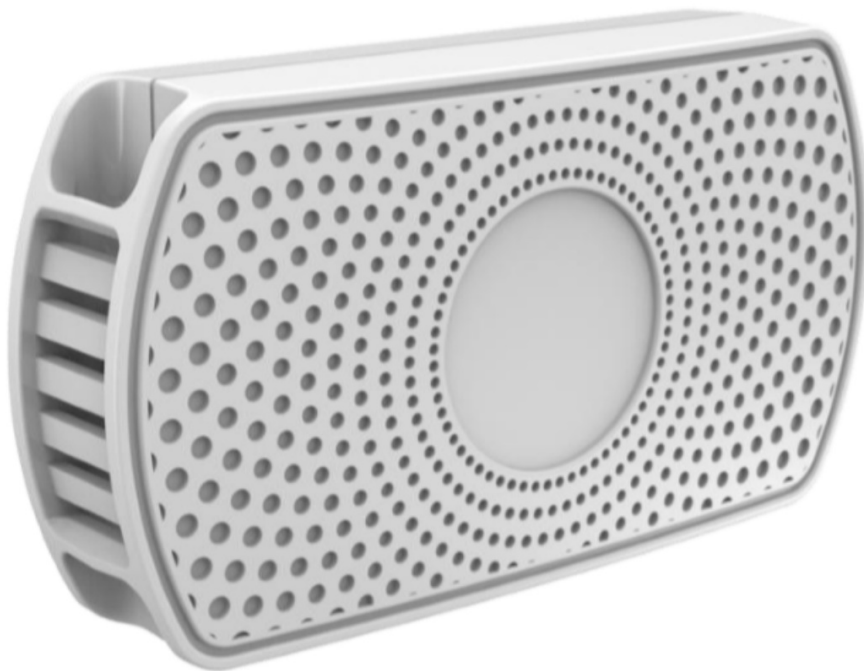




# meitrack AST101 Bluetooth Temperature and Humidity Sensor User Guide

[Home](#) » [meitrack](#) » meitrack AST101 Bluetooth Temperature and Humidity Sensor User Guide 

  
AST101/AST102 Bluetooth Temperature  
and Humidity Sensor  
User Guide



Applicable Model: T399L\T711L

**Change History**




File Name	AST101/AST102 Bluetooth Temperature and Humidity Sensor User Guide		
Project	T399L\T711L	Creation Date Update Date	2021-05-08 2022-07-21
Subproject	Accessory User Guide	Total Pages	7
Version	V1.2	Confidential	External Documentation

## Contents

- [1 Copyright and Disclaimer](#)
- [2 Product Overview](#)
- [3 Main Device and Accessories](#)
- [4 Product Specifications](#)
- [5 Operation Instructions](#)
- [6 Installation Instructions](#)
- [7 Documents / Resources](#)
- [8 Related Posts](#)

## Copyright and Disclaimer

Copyright © 2022 MEITRACK. All rights reserved.

  and  are trademarks that belong to Meitrack Group and its subsidiary.

The user manual may be changed without notice.

Without the prior written consent of Meitrack Group, this user manual, or any part thereof, may not be reproduced for any purpose whatsoever or transmitted in any form, either electronically or mechanically, including photocopying and recording.

Meitrack Group shall not be liable for direct, indirect, special, incidental, or consequential damages (including but not limited to economic losses, personal injuries, and loss of assets and property) caused by the use, inability, or illegality to use the product or documentation.

## Product Overview

The AST101/AST102 is a portable temperature and humidity sensor featuring an IP66 water resistance rating. The device is equipped with internal BLE 4.2 for wireless transmission, avoiding complex connections of communication cables, pipelines, and power cables. In this way, users can quickly install the device according to actual conditions. This reduces installation time and increases working efficiency. This device is equipped with a built-in battery to supply power, which can work for more than three years. It can be used for industrial monitoring, civil monitoring, machinery manufacturing monitoring, and environmental measurements, such as the laboratory, cleanroom, collection room, home, greenhouse, weather station, national defense science and technology research, posts and telecommunications, tobacco, chemical engineering, environmental protection, archives preservation and cultural relics protection, computer room, warehouse, medicine warehouse, medical health, hotel, food warehouse, grain, etc.

The highlights of the device are as follows:

- IP66 water resistance rating
- Temperature acquisition accuracy <  $\pm 0.5^{\circ}\text{C}$ . Humidity acquisition accuracy: 0.05% RH.
- Built-in battery with 3–5 years of battery life
- At most 4 temperature and humidity sensors simultaneously supported by the T399L-GFB5

**Main Device and Accessories**

**AST101:** internal Bluetooth temperature and humidity sensor  
**AST102:** external Bluetooth temperature and humidity sensor. A cable one meter in length.

	
AST101	AST102

**Product Specifications**

**4.1 Receiver Specifications**

Item	Specifications
Water resistance rating	IP66
Outer case	ABS plastic
Dimension	70.6 mm x 38 mm x 17.8 mm
Weight	AST101: 37.5g AST102: 62g
Battery	2 FR03 lithium-ion batteries
Voltage	3 V
Average power consumption	35 uA
Quiescent current	< 3 uA
Peak current	< 8 mA
Battery capacity	1250 mAh
Temperature measuring range	-20°C to 55°C
Temperature measuring accuracy	0.05°C
Humidity measuring range	0%–100% RH
Humidity measuring accuracy	0.05%
Measurement error	±5% RH
Sampling period	1 time per second
Transmission distance	10 meters

## Operation Instructions

To turn on the AST101/AST102, press and hold down the power button for three seconds. Then the blue LED indicator is on for two seconds.

To turn off the AST101/AST102, press and hold down the power button for three seconds. Then the blue LED indicator blinks five times.

When the device is working, the blue LED indicator is off by default.

### 5.1 Setting the Bluetooth Temperature and Humidity Sensor

1. Connect the T399L to the computer through the USB cable, start Meitrack Manager, and then set the Bluetooth temperature and humidity sensor.

Temperature and Humidity Senesor Setting

Alarm when signal lost for(secs) 60

Trigger Output When ☐ Lost ☐ Temperature too high ☐ Temperature too low ☐ Humidity too high ☐ Humidity too low

Control Output ☐ Trigger OUT1 ☒ Trigger OUT2

1 2 3 4

☒ Report Data

Device Name T&H sensor

MAC Address AC:23:3F:A2:92:06

High Temperature Threshold 0 High Humidity Threshold 0

Low Temperature Threshold 0 Low Humidity Treshold 0

Set

**Alarm when signal lost for(secs):** If the Bluetooth temperature and humidity sensor fail to be detected within the specified period, an alert is generated.

**Trigger output when:** Output 1 or output 2 is controlled when Bluetooth signals are lost, the temperature is too high or low, or the humidity is too high or low.

**Control output:** Output 1 or output 2 is controlled.

**Report Data:** Upload Bluetooth data or not.

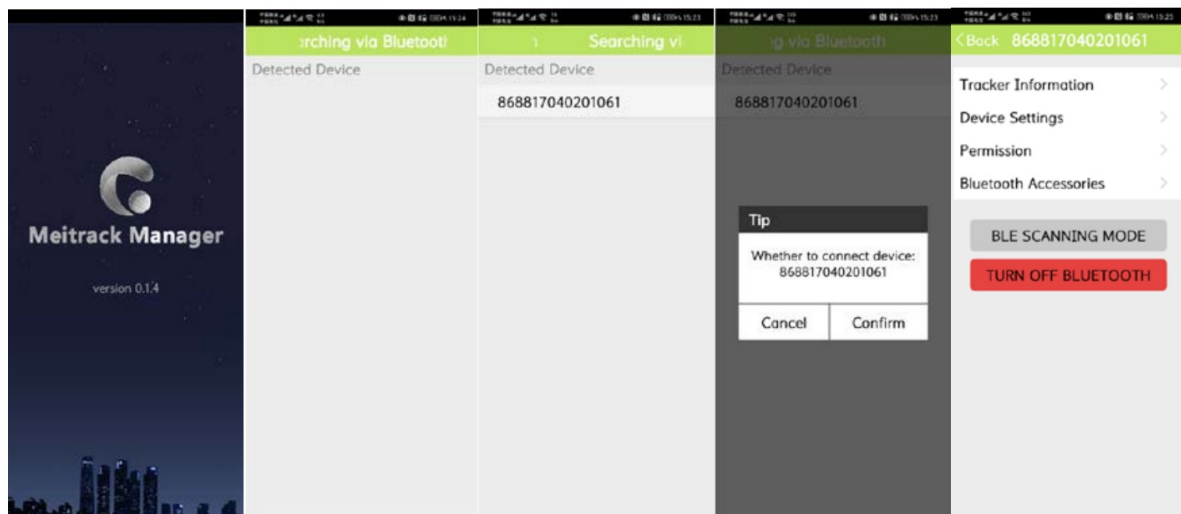
**MAC Address:** indicates the MAC code of the Bluetooth temperature and humidity sensor.

**Note:** If the MAC code of the Bluetooth temperature and humidity sensor fails to be found, set it by the Meitrack Manager app.

2. Start the Meitrack Manager app, detect the T399L, and set the Bluetooth temperature and humidity sensor.

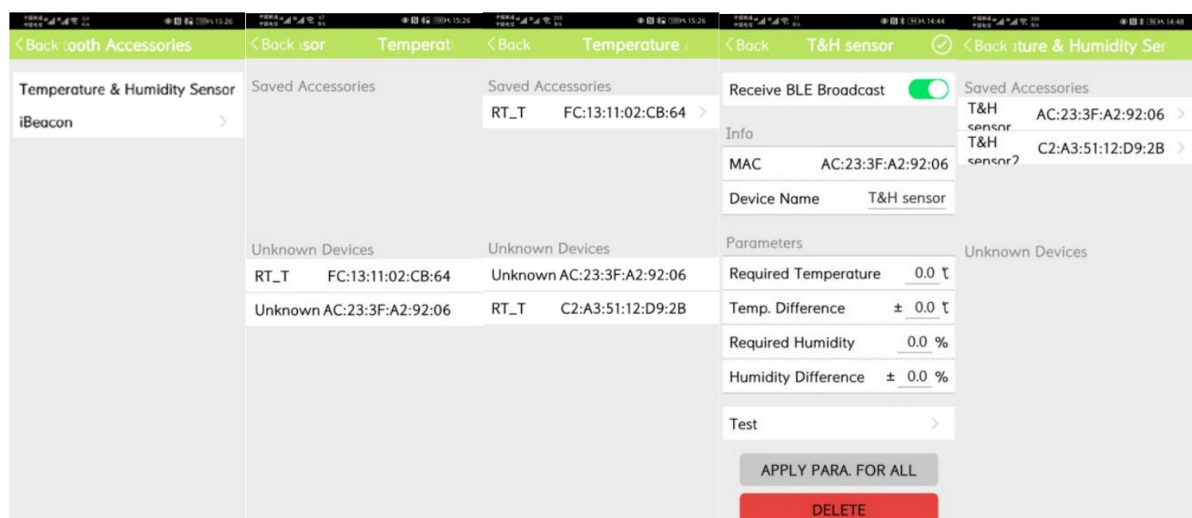
1) Start the Meitrack Manager app. Trackers will be detected automatically. After a tracker is detected, select one and click Confirm. Then the device configuration page is displayed.

If a tracker fails to be detected, connect the white cable (input 2) of the device to the power cable (12–36 V) and the analog device to the ACC ignition cable. Then the device is switched to the broadcasting mode for one minute.



2) Set Bluetooth temperature and humidity sensor parameters.

Select Temperature & Humidity Sensor. The MAC code of nearby Bluetooth temperature and humidity sensors will be detected automatically. Then select one sensor and set sensor parameters as required, as shown in the following figures.



## Installation Instructions

### 6.1 Warnings

The device can be stuck on the surface of the following materials: aluminum, galvanized steel, enamel steel, stainless steel, ceramics, glass/epoxy resins, acrylic acid, PBT, ABS, PC, and hard PVC.

Clean the adhesive surface. Please make sure that the adhesive surface is dry and dust-free.

Please stick the device at a temperature of 21°C to 38°C.


Note: The device is operated at a low temperature. Before sticking the device, heat the adhesive surface by using a blower, or stick it at a suitable temperature for more than half an hour, and then use the device at a low temperature.

After sticking the device, press the device for 1–2 seconds and repeat it several times to ensure that the device is stuck properly.

If you have any questions, do not hesitate to email us at [info@meitrack.com](mailto:info@meitrack.com).

**Copyright © Meitrack Group 2021.  
All rights reserved.**

## Documents / Resources

 <p>AST101/AST102 Bluetooth Temperature and Humidity Sensor User Guide</p> <p>Applicable Model: T898/T7731</p>	<p><a href="#">meitrack AST101 Bluetooth Temperature and Humidity Sensor</a> [pdf] User Guide</p> <p>AST101, AST102, Bluetooth Temperature and Humidity Sensor, AST101 Bluetooth Temperature and Humidity Sensor, Bluetooth Temperature and Humidity Sensor, Temperature and Humidity Sensor, Humidity Sensor, Temperature Sensor</p>
---	---