



MEGA LITE MCC1 Memo Core Control Rack User Guide

[Home](#) » [MEGA LITE](#) » MEGA LITE MCC1 Memo Core Control Rack User Guide 

MCC1

MCC1 Quick Start

Contents

- [1 Unpacking](#)
- [2 Hook UP](#)
- [3 Power UP](#)
- [4 Power Down](#)
- [5 Start New Show](#)
- [6 Patch Your Fixtures](#)
- [7 Create First Look](#)
- [8 More Help](#)
- [9 Documents / Resources](#)
- [10 Related Posts](#)

Unpacking

- 1 – Memo Core Control Rack Mount Unit
- 1 – Power Con 120v Power cable
- 1 – USB drive with user manual and tutorial videos

Hook UP

- Connect unit to power using power on connector provided
- Connect up to 8 universe's to the lighting fixtures via Dmx out connectors in back of unit
- Connect ethernet cable to in-house network if required
- HDMI cable connects to external monitor for initial programming setup
- Secondary HDMI output will be used for HD video out if required
- Bluetooth keyboard and mouse included, mouse and keyboard will need to be powered on
- Phoenix connector in back for connection to MEMO remotes if required

Power UP

- Press reset button to power on it will eliminate Blue to indicate power is on
- Once unit is booted, front display will show universe output LED's on and LCD display will show current page and current look active
- To turn all DMX Power off, hit the Red "x" button
- Left/Right arrow buttons scroll through all available buttons on a page
- Up/Down arrow buttons allow you to change through multiple pages

Power Down

Proper power down is crucial.

To power down, press the red 'X' button 10 times consecutively until menu shows shutting down. Wait for unit to power off, and disconnect power if needed

Start New Show

Press the New Button on top left of screen In the dialog that appears enter name of new show to be created

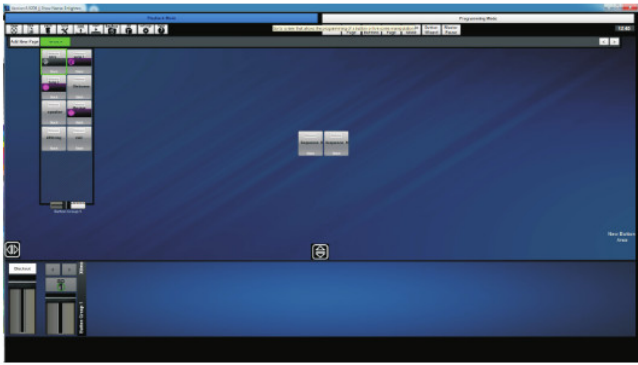
Patch Your Fixtures

press patch button on touch screen and select load patch new fixture from the menu use trackball to select manufacturer and click use trackball or select encoder to scroll and find the fixture to patch enter the number of this fixture to patch once patched you can double click on each fixture to set address on fixture connect dmx cable from universe 1 port into first fixture and chain them together

Create First Look

press Clear All button TWICE to clear all active looks goto program screen and Select fixtures (make the fixture label red by clicking on it) got to desired palettes and set fixture to the look to save press save Seq button on console and name look if desired press save button on screen

Screen will go to Playback mode and flash red, click on page or move new button on-screen To assign to fader or Button right click on button and select assign to Lighting Console



More Help

Tutorial Videos on included USB Drive Support Call Winston Potgieter at 210-286-2975
Thank You!

Documents / Resources

MCC1
Quick Start

Unpacking

1. Remove the MCC1 from the box.
2. Remove the MCC1 from the box.
3. Remove the MCC1 from the box.

Installation

1. Connect the MCC1 to the power supply.
2. Connect the MCC1 to the power supply.
3. Connect the MCC1 to the power supply.

Power On

1. Turn on the MCC1.
2. Turn on the MCC1.
3. Turn on the MCC1.

Power Down

1. Turn off the MCC1.
2. Turn off the MCC1.
3. Turn off the MCC1.

[MEGA LITE MCC1 Memo Core Control Rack](#) [pdf] User Guide
MCC1, Memo Core Control Rack, MCC1 Memo Core Control Rack