

Meetion

Meetion XLX-800
Wireless Vertical
Mouse



Meetion XLX-800 Wireless Vertical Mouse User Manual

[Home](#) » [MEETION](#) » Meetion XLX-800 Wireless Vertical Mouse User Manual 

Contents

- [1 Meetion XLX-800 Wireless Vertical Mouse](#)
- [2 Product Information](#)
- [3 Product Usage Instructions](#)
- [4 INSTALLATION](#)
- [5 SPECIAL FEATURES](#)
- [6 WARRANTY CARD](#)
- [7 PRODUCT INTRODUCTION](#)
- [8 OPERATIONAL INSTRUCTIONS](#)
- [9 TECHNICAL SPECIFICATION](#)
- [10 Fcc Statement](#)
- [11 Documents / Resources](#)
 - [11.1 References](#)
- [12 Related Posts](#)

Meetion

Meetion XLX-800 Wireless Vertical Mouse



Product Information

Specifications

- Compliance: Part 15 of FCC Rules
- RF Exposure: Meets general RF exposure requirements
- Usage: Portable exposure condition without restriction

Product Usage Instructions

Compliance and Operation

This device complies with Part 15 of the FCC Rules. When using the product, ensure it operates under the following conditions:

1. This device must not cause harmful interference.
2. This device must accept any interference received, including interference that may cause undesired operation.

Warning on Modifications

It is important to note that changes or modifications not expressly approved by the party responsible for compliance could void the user's authority to operate the equipment. Avoid making any unauthorized alterations to the device.

RF Exposure Compliance

The device has been evaluated to meet general RF exposure requirements. Users can utilize the device in portable exposure conditions without any restrictions.

Frequently Asked Questions (FAQ)

- **Q: Can I make modifications to the device?**

A: No, any changes or modifications not approved may void your authority to operate the equipment.

- **Q: Is there a restriction on where I can use the device?**

A: The device can be used in portable exposure conditions without any restrictions.

Congratulations on the Purchase of MEETION products!

Please read this user's manual before using the unit and retain this user's manual in safe place for future reference.

COPYRIGHT

©2022. MEETiON TECH CO., LTD. Version 1.0(V 1.0). This Manual and information contained in it are copyrighted. All rights reserved.

TRADEMARKS

All trademarks are the property of their legal holders

INSTALLATION

1. Connect the USB receiver to an available USB port of your PC.
2. Installation of the mouse is automatic after its connection to a PC USB port.
3. If the mouse not working, please restart power, or disconnect it from your PC and check connect pins for possible damage.

SPECIAL FEATURES

- 2.4G Wireless Transmission Technology.
- 10M wireless receiving distance.
- Ergonomic design to keep your wrist in a natural vertical state.
- Red light LED Sensor.
- 800/1200/2400/3200 adjustable DPI.
- Skin-like materials make the hand feel more comfortable.

NOTE

- Technical specifications given in this table are supplemental information and cannot give occasion to claims.
- Technical specifications are subject to change without notice due to improvement of MEETiON production.
- Technical support by Meetion Tech.



GENERAL


- The safe product, conforming to the US and EU requirements.
- The product is made in accordance with RoHS standard.

- The product is made in accordance with FCC standard. The standard was issued in order to decrease the amount of the electronic and electrical waste emitted into the atmosphere.
- The WEEE symbol (the crossed-out wheeled bin) using indicates that this product in not home waste. You protect the environment when you recycle hazardous waste appropriately. In order to get detailed information about recycling this product, please contact your retailer or a local authority.

WARRANTY CARD

Model No.	
Date of Sale	
Seller	
Serial Number	

Address of the Seller _____

Phone of the Seller _____ _____	QUALIFIED CERTIFICATE MODEL: _____ CHECKER:  _____ DATE: _____
------------------------------------	---

Seller Signature & Stamp Stamp

To be Filled in by Service Center

Date of Receipt _____	Date of Receipt _____	Date of Receipt _____
Date of Return _____	Date of Return _____	Date of Return _____
Special Marks _____	Special Marks _____	Special Marks _____

PRODUCT INTRODUCTION

- A: Left button
- B: Charging Indicator (Charging status: When the device is charging, the red indicator light is continuously on, and the green indicator light is on when it is fully charged)
- C: Low Battery & DPI Indicator (When the device is low on power, the red indicator at this location will flash to remind you to charge the device.)
 - Also the red light blinks when you switch the mouse DPI:
 - Switch to B00DPI, the red light blinks 1 time
 - Switch to 1200DPI, the red light blinks twice
 - Switch to 1600DPI, red light blinks 3 times
 - Switch to 2400DPI, red light blinks 4 times

- D: Forward button
- E: Backward button
- F: Right button
- G: Scroll wheel
- H: DPI switch
- I: Power switch ON/OFF
- J: Type-C Charging Port

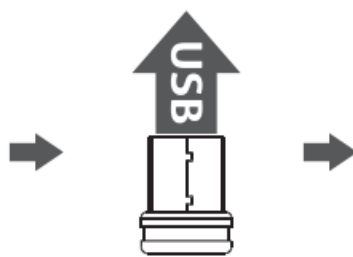


OPERATIONAL INSTRUCTIONS



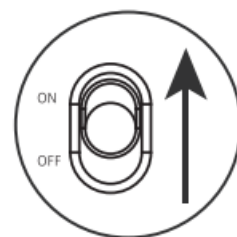
①

Remove wireless adapter



②

Insert computer USB interface



③

Push down to turn on the power

TECHNICAL SPECIFICATION

Operation Mode:	Opto-electronic
Type:	2.4GHz Wireless
Power Type:	Rechargeable
Type:	Type-C
Key life:	5 million times
Wireless distance:	10m
Gross weight:	95±5g
Product Size:	104 * 73 * 58mm
Resolution:	3200dpi
Rated voltage /current:	3.7V /BmA

COMPATIBILITY

Applicable system:

Windows (windows XP /Vista/ 7 / 8 / Server 2003 / 2000 / WinIO ,etc) MacOS (macOS 10.10 above is recommended)

In 2.4G mode:

suitable for desktop computers, notebook computers, smart TV with USB interface, etc

Dear Customer!

Thank you for purchasing MEETION product. We guarantee high quality and reliable operation of MEETION products. if technical requirements described in User's Manual are observed. Having purchased this product. Customer hereby agrees to warranty terms stated below.

Please read User's Manual carefully, check package contents and correctness of completing warranty card.

Please retain warranty card for the whole term of operation life of the product.

With the present warranty card MEETION confirms that its product is free from defects and is obliged to provide free repair or replacement of faulty parts within warranty period which is prolonged for the term of warranty repair. MEETION reserves the right to refuse free-of-charge warranty repair unless warranty terms stated below have been met by a user. All warranty terms are effective within the scope of applicable legislation which assures protection of consumers' rights.

Warranty terms

"Warranty period set by the manufacturer for all kinds of products, is 12 months from the date of purchase.

1. The warranty is valid only at presence of cash or commodity check and if the warranty card has been completed correctly and it contains such details: model name, serial number (if it is foreseen by the producer), date of purchase, signature of the Buyer and stamp of the Seller.
2. Serial number (if it is foreseen by the producer) and model name of the product should correspond to those specified in the warranty card.
3. Warranty repair is carried out within warranty period specified in the warranty card by authorized service centers only (ASC).
4. Warranty for the product expires, if:
 - Instructions given in User's Manual are not observed;
 - There are signs of outside interference or obvious attempt of product's repair by unauthorized service

center;

- There are found unauthorized modifications of construction or electric circuit diagram of the product (Except for cases stipulated in User's Manual);
- Product designed for personal (household) needs has been used for profit extraction, production needs, or other purposes which do not correspond to its intended application.

5. Warranty does not cover the following:

- Mechanical damages or damages due to improper transportation or storage;
- Damages caused by presence of foreign objects, substances, liquids or insects inside the product;
- Damages caused by natural calamities, fire, household factors, accidental external factors;
- damages caused by non-correspondence of parameters of power supply, telecommunications and cabling networks to State standards and other external factors;
- Damages caused by using nonstandard consumables, adapters and spare parts.

6. Warranty does not cover consumables.

7. MEETION does not assume responsibility for possible damages/injuries directly or indirectly sustained by MEETION products to people, domestic animals or property, if such damage/injury has been suffered as a result of noncompliance with rules or conditions of operation of the product or it's in spallation, deliberate or incautious actions of a user or third persons."

If any problems occur during operation of the product, we strongly recommend addressing service centers authorized by the manufacturer of MEETION products only, addresses and phone numbers of which are found at WWW.MEETION.COM and e-mail: info@meetion.com.

I hereby accept terms of warranty servicing.

Fcc Statement

This device complies with Part 15 of the FCC Rules. Operation is subject to the following two conditions:

1. This device may not cause harmful interference, and
2. This device must accept any interference received, including interference that may cause undesired operation

NOTE: This equipment has been tested and found to comply with the limits for a Class B digital device, pursuant to Part 15 of the FCC Rules. These limits are designed to provide reasonable protection against harmful interference in a residential installation. This equipment generates, uses and can radiate radio frequency energy and, if not installed and used in accordance with the instructions, may cause harmful interference to radio communications. However, there is no guarantee that interference will not occur in a particular installation. If this equipment does cause harmful interference to radio or television reception, which can be determined by turning the equipment off and on, the user is encouraged to try to correct the interference by one or more of the following measures:

- Reorient or relocate the receiving antenna.
- Increase the separation between the equipment and receiver.
- Connect the equipment into an outlet on a circuit different from that to which the receiver is connected.
- Consult the dealer or an experienced radio/TV technician for help.


Warning: changes or modifications not expressly approved by the party responsible for compliance could void the user's authority to operate the equipment

The device has been evaluated to meet general RF exposure requirement the device can be used in portable exposure condition without restriction

TECHNICAL SUPPORT

Having technical problems with this product? Send an email to service@meetion.com
For more information please visit: www.meetion.com

Documents / Resources

	Meetion XLX-800 Wireless Vertical Mouse [pdf] User Manual 2BMVN-XLX-800, 2BMVNXLX800, xlx 800, XLX-800 Wireless Vertical Mouse, XLX-800, Wirele ss Vertical Mouse, Vertical Mouse, Mouse
---	--

References

- [User Manual](#)

[Manuals+.](#) [Privacy Policy](#)

This website is an independent publication and is neither affiliated with nor endorsed by any of the trademark owners. The "Bluetooth®" word mark and logos are registered trademarks owned by Bluetooth SIG, Inc. The "Wi-Fi®" word mark and logos are registered trademarks owned by the Wi-Fi Alliance. Any use of these marks on this website does not imply any affiliation with or endorsement.