



# Meetion DirectorC Ergonomic Multi-Device Bluetooth Keyboard and Mouse Owner's Manual

[Home](#) » [MEETION](#) » Meetion DirectorC Ergonomic Multi-Device Bluetooth Keyboard and Mouse Owner's Manual 

## Contents

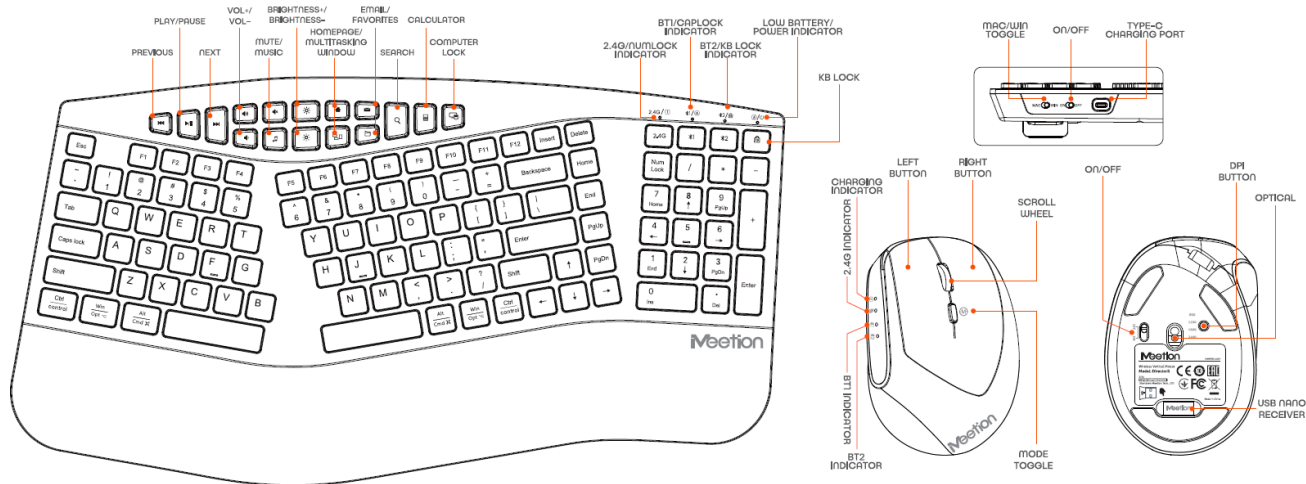
- [1 Meetion DirectorC Ergonomic Multi-Device Bluetooth Keyboard and Mouse](#)
- [2 MULTIMEDIA FUNCTION KEYS](#)
- [3 2.4G CONNECTION MOUSE](#)
- [4 2.4G CONNECTION KEYBOARD](#)
- [5 BLUETOOTH CONNECTION](#)
- [6 CHARGE INDICATION MOUSE](#)
- [7 DPI ADJUSTMENT MOUSE](#)
- [8 WARRANTY CARD](#)
- [9 Documents / Resources](#)
  - [9.1 References](#)
- [10 Related Posts](#)



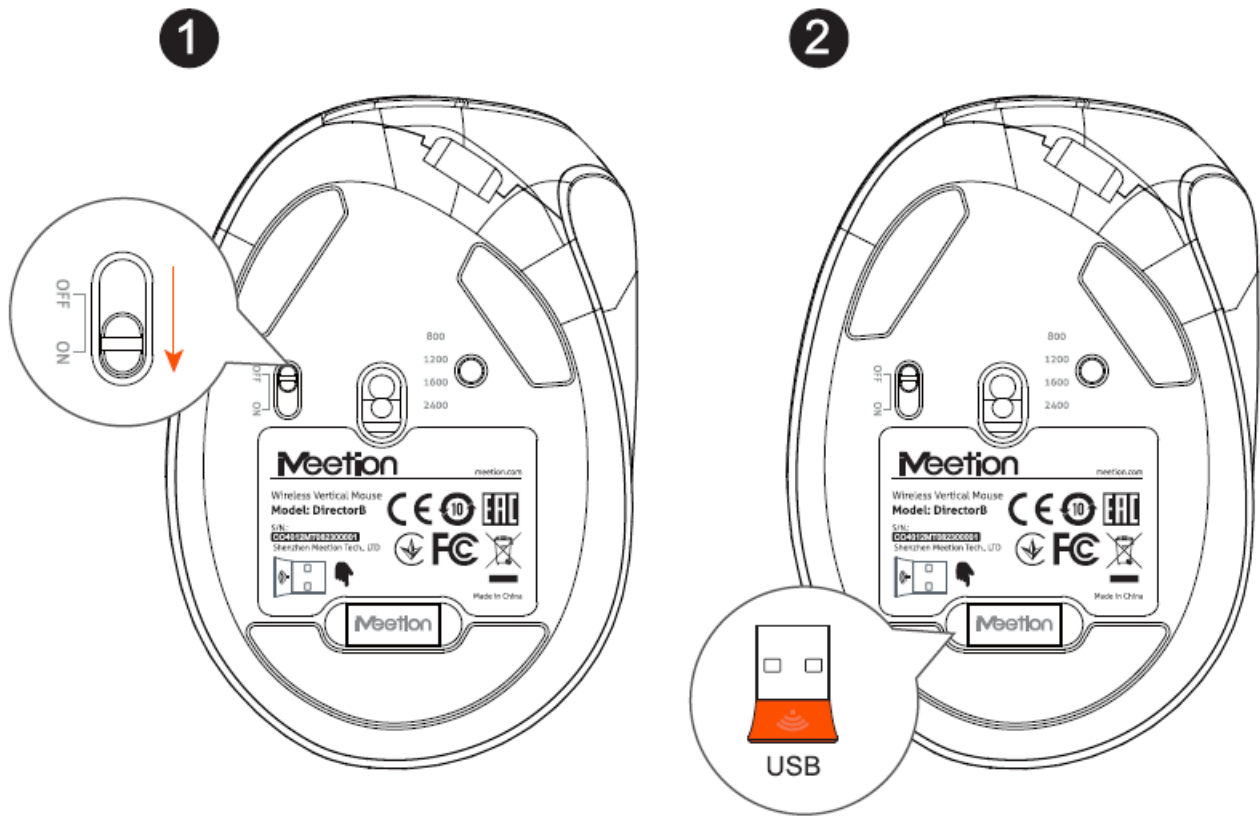
**Meetion DirectorC Ergonomic Multi-Device Bluetooth Keyboard and Mouse**



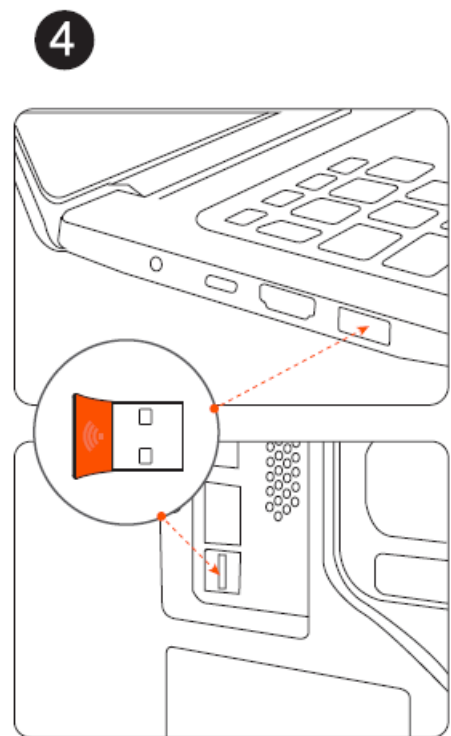
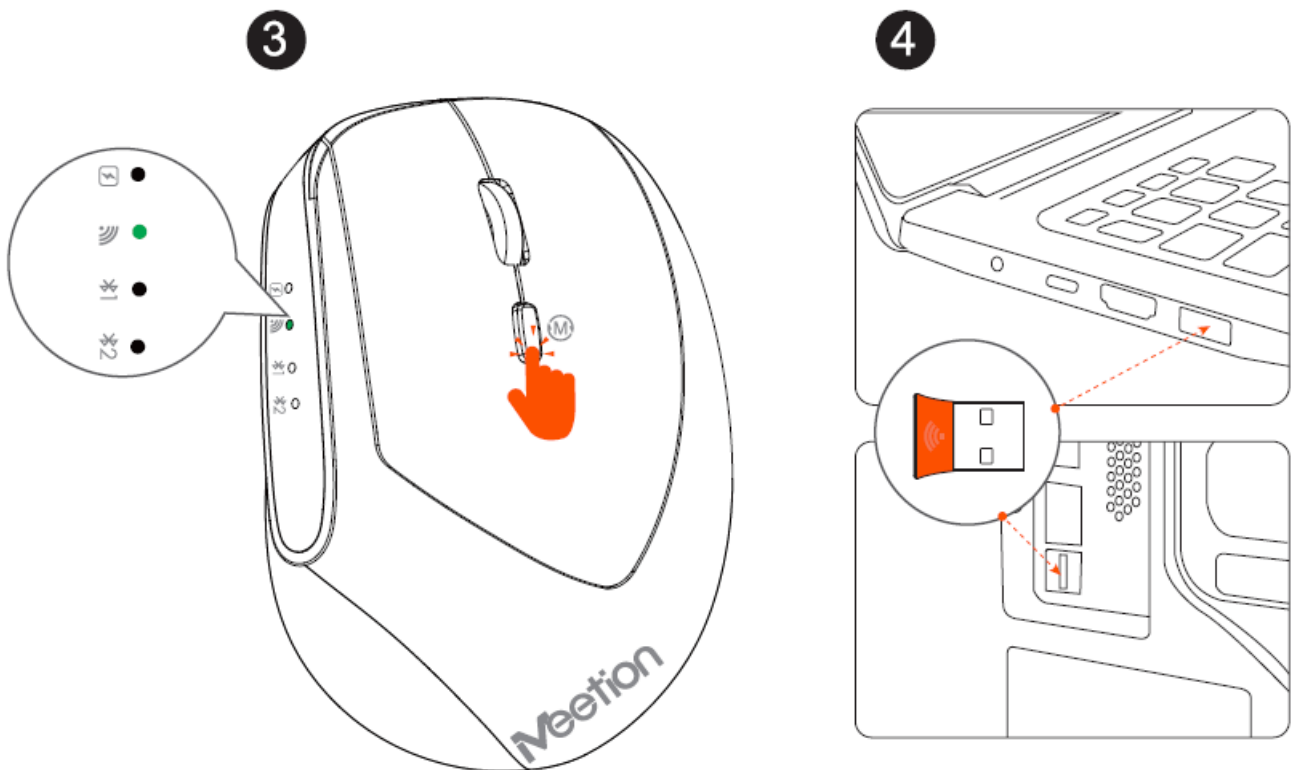
## MULTIMEDIA FUNCTION KEYS



## 2.4G CONNECTION MOUSE



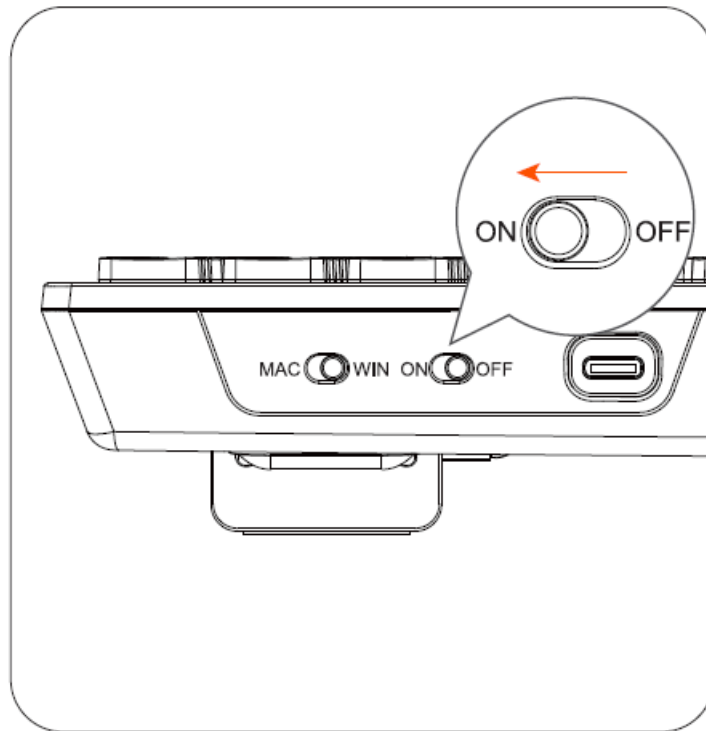
- Turn power switch
- Remove the USB receiver at the bottom of the mouse



- Press the mode switch button to switch to 2.4G mode, and the light is green
- When the product used porters me alternate hardware installation prompt willer thie computer

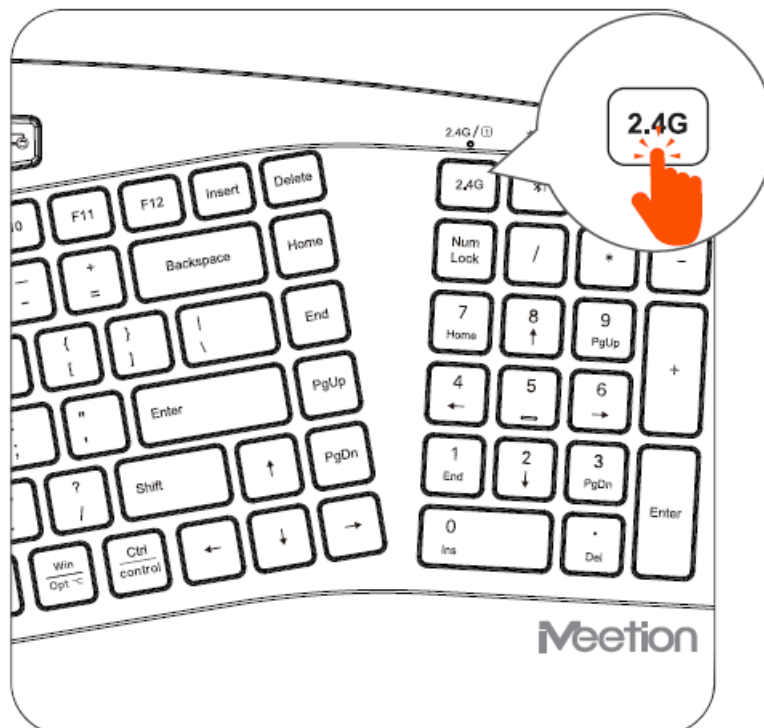
## 2.4G CONNECTION KEYBOARD

1



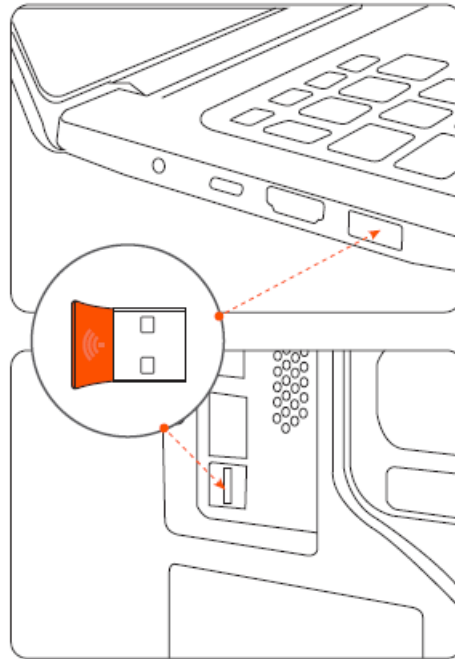
- Turn on the keyboard power switch

2



- Tap here to enter 2.4G mode

3



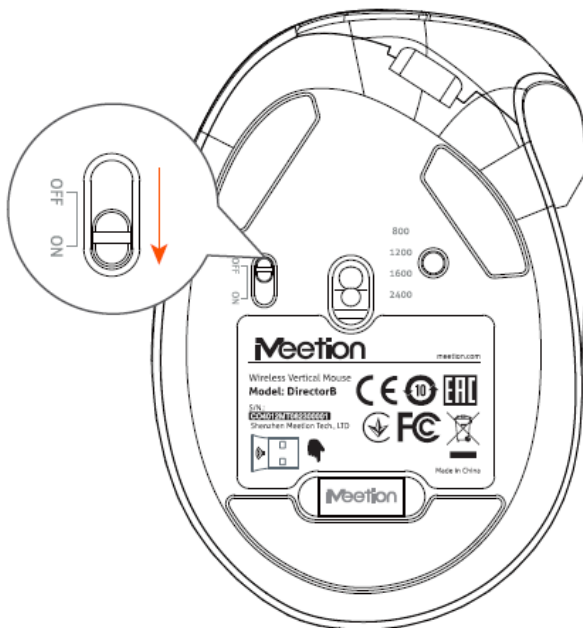
- Insert computer USB interface

(When the product is used for the first time, an automatic hardware installation prompt will pop up in the lower right corner of the computer)

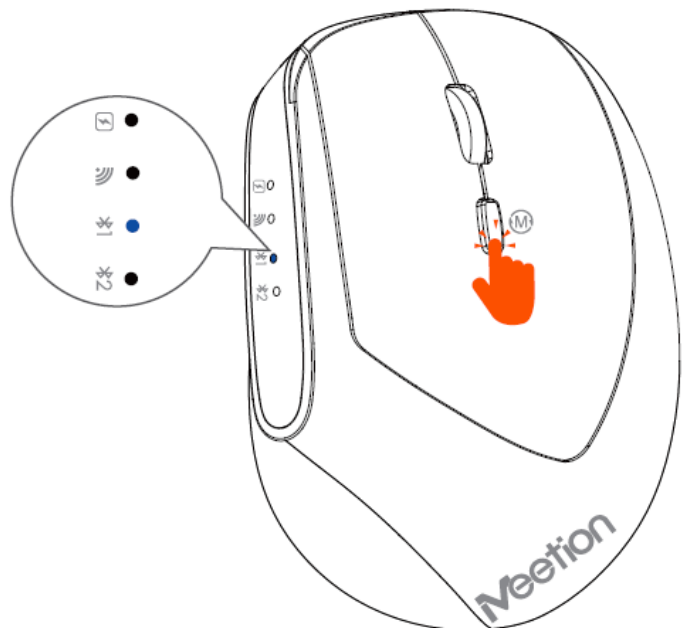
## BLUETOOTH CONNECTION

### MOUSE

1

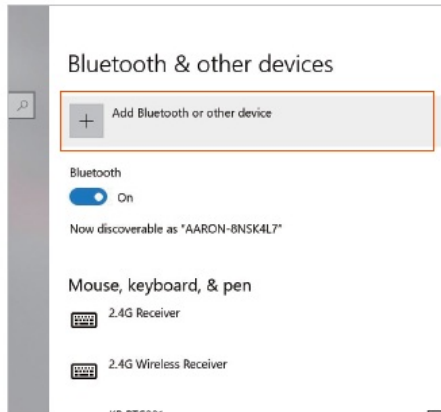


2

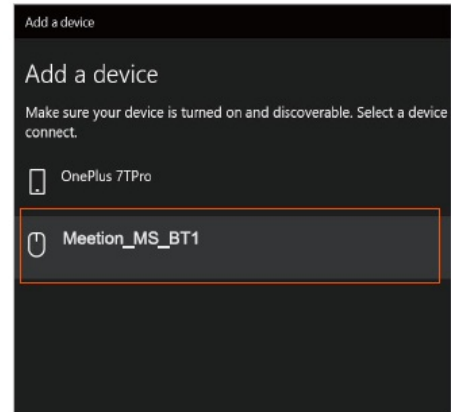


- Turn on the mouse power switch
- Short press the mode switch button, switch to Bluetooth 1, then the blue light flashes you can perform code matching

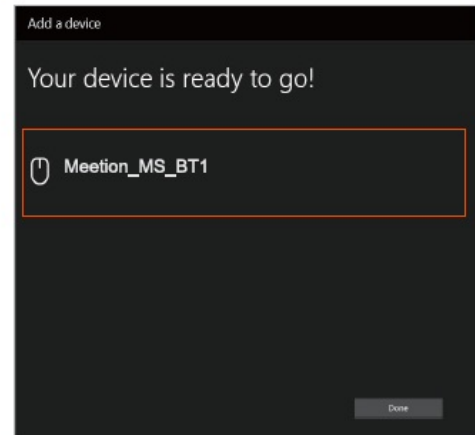
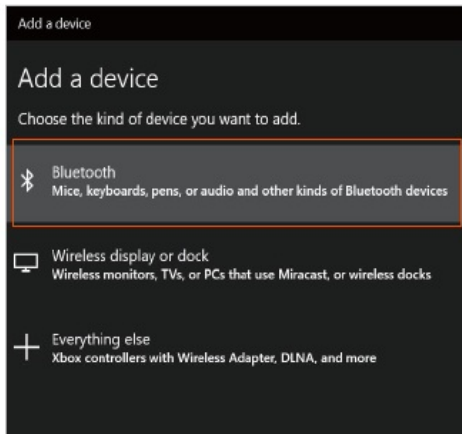
3



4

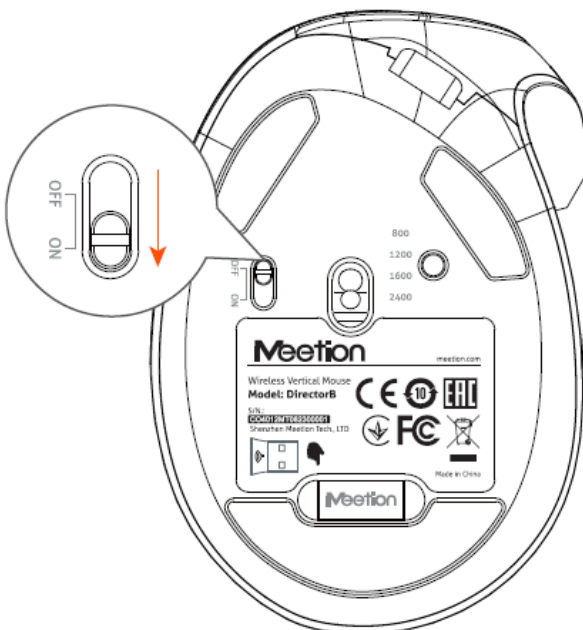


- Turn on the mouse power switch
- Short press the mode switch button, switch to Bluetooth 1, then the blue light flashes you can perform code matching

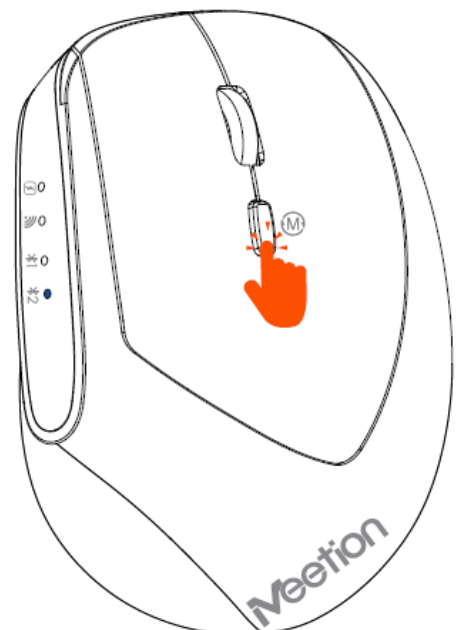


- Click to add Bluetooth or other devices, click to add Bluetooth mouse, keyboard, and other devices
- Paired successfully

1

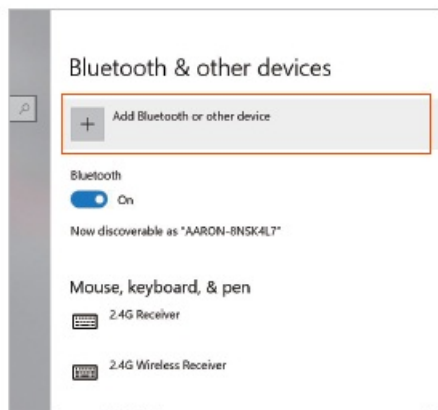


2

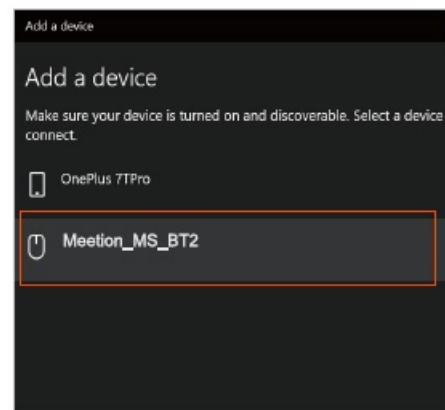


1. Turn on the mouse power switch
2. Short preeton 2, them tre but in nashes you can perform code matching

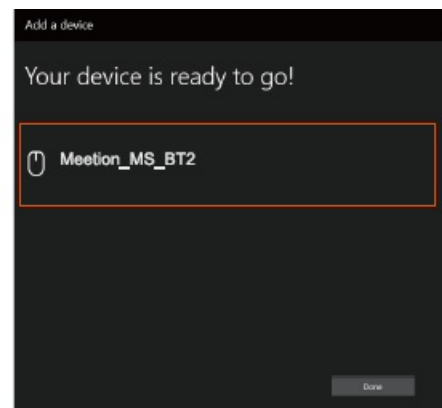
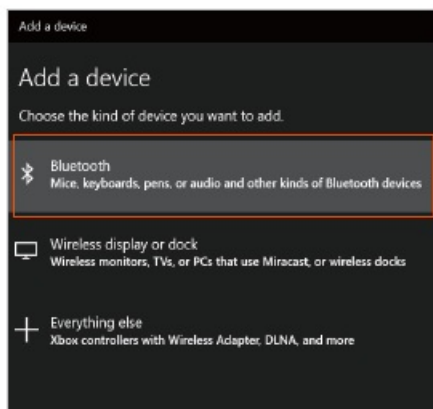
3



4



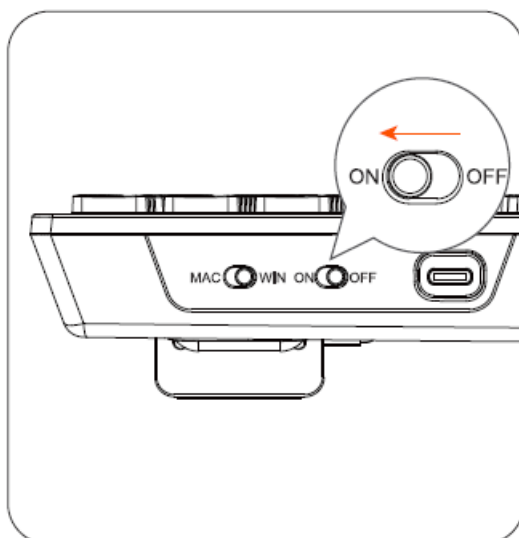
3. Turn on the computer Bluetooth switch to enter the Bluetooth settings page
4. Find the device named Meetion\_MS\_BT2 and click on Add Pairing



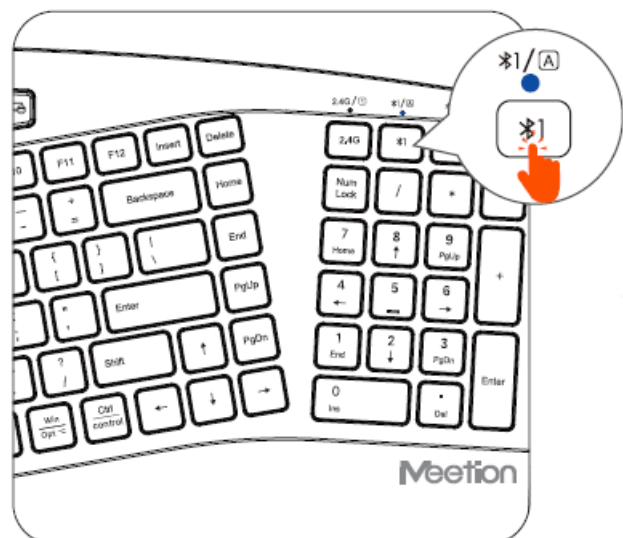
5. Click to add Bluetooth or other devices, click to add Bluetooth mouse, keyboard, and other devices
6. Paired successfully

## KEYBOARD

1



2

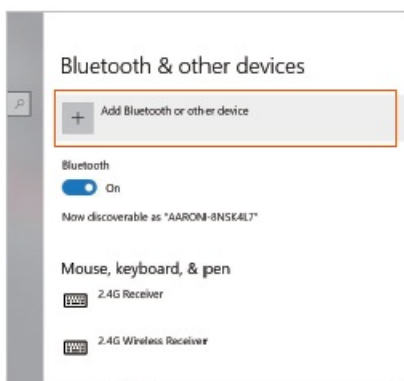


- Turn on the keyboard power switch

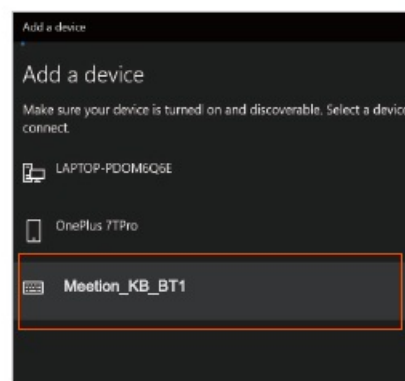


- Click here to enter Bluetooth 1 mode pairing, blue light flashing

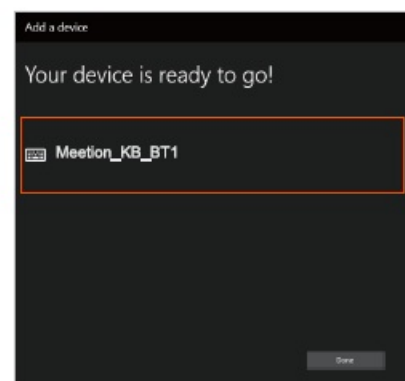
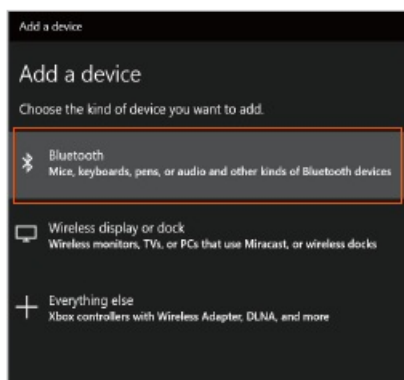
3



4

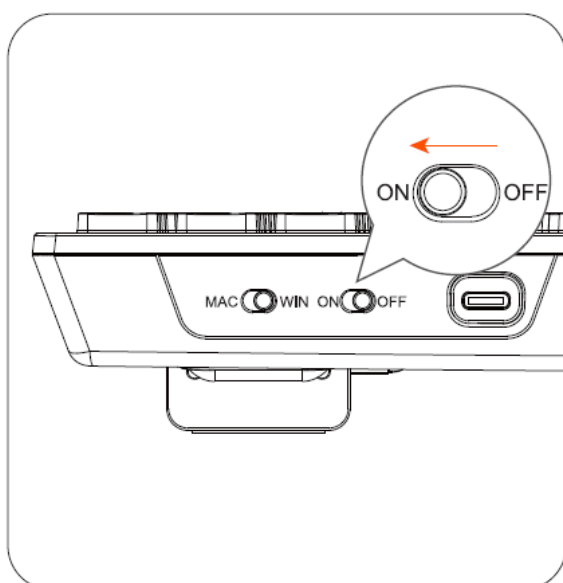


- Turn on the computer Bluetooth switch to enter the Bluetooth settings page
- Find the device named Meetion\_K- B\_BT1 and click on Add Pairing

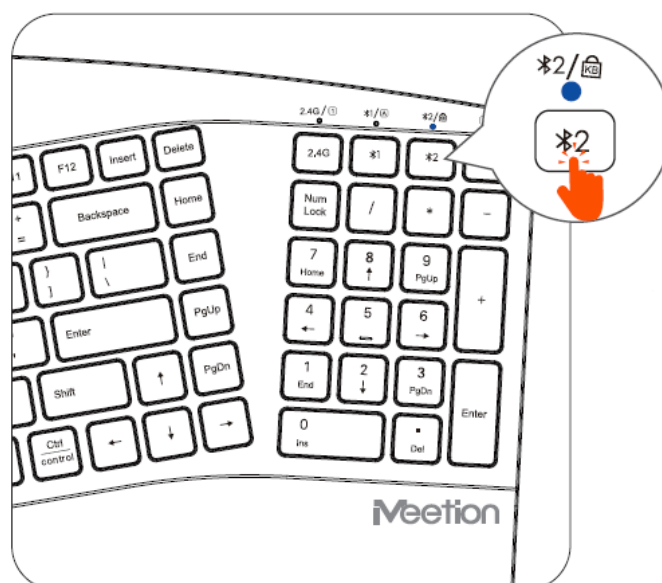


- Click to add Bluetooth or other devices, click to add Bluetooth mouse, keyboard, and other devices
- Paired successfully

1



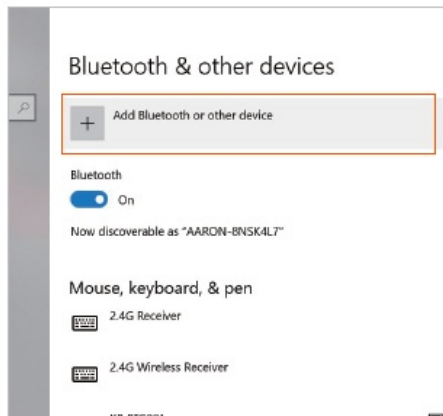
2



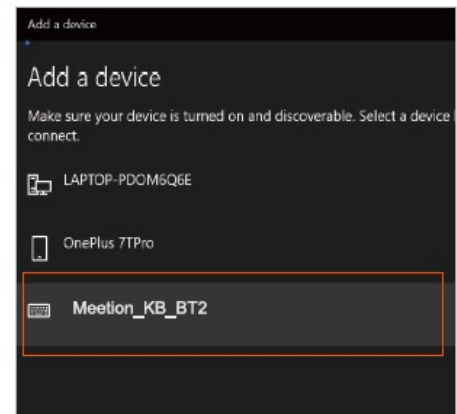
1. Turn on the keyboard power switch
2. Click here to enter Bluetooth 2 mode pairing, blue light flashing



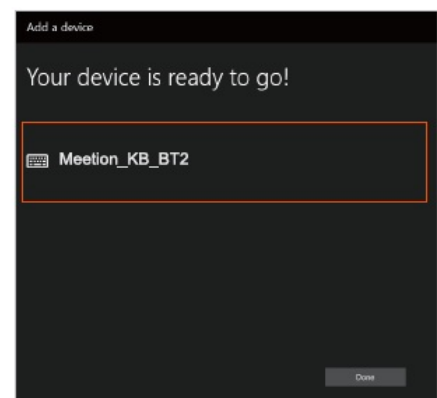
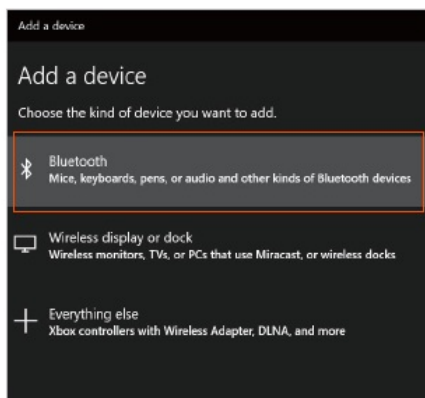
3



4



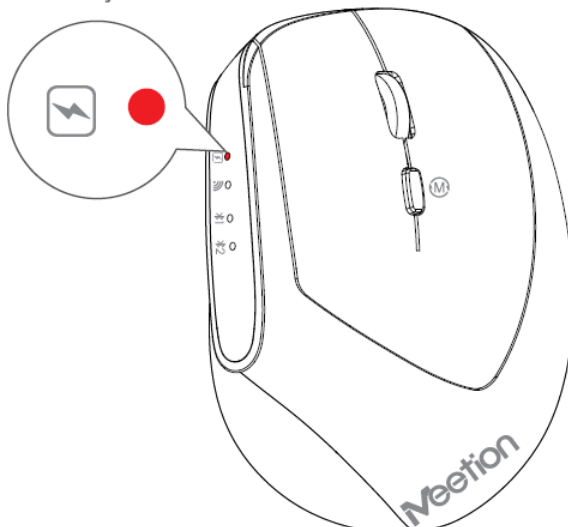
3. Turn on the computer Bluetooth switch to enter the Bluetooth settings page
4. Find the device named Meetion\_K- B\_BT2 and click on Add Pairing



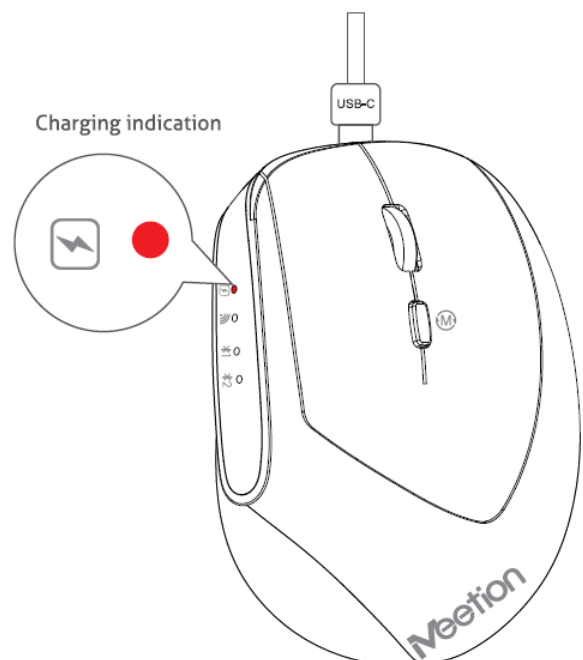
5. Click to add Bluetooth or other devices, click to add Bluetooth mouse, keyboard, and other devices
6. Paired successfully

## CHARGE INDICATION MOUSE

low battery indicator

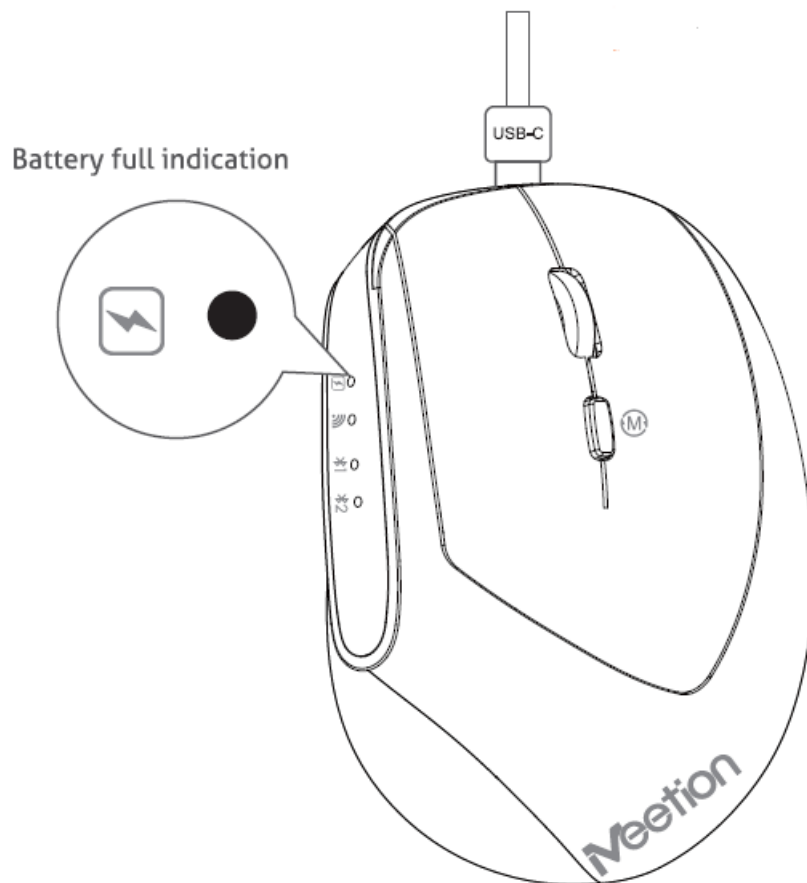


Charging indication



- This red light is blinking, the battery is low

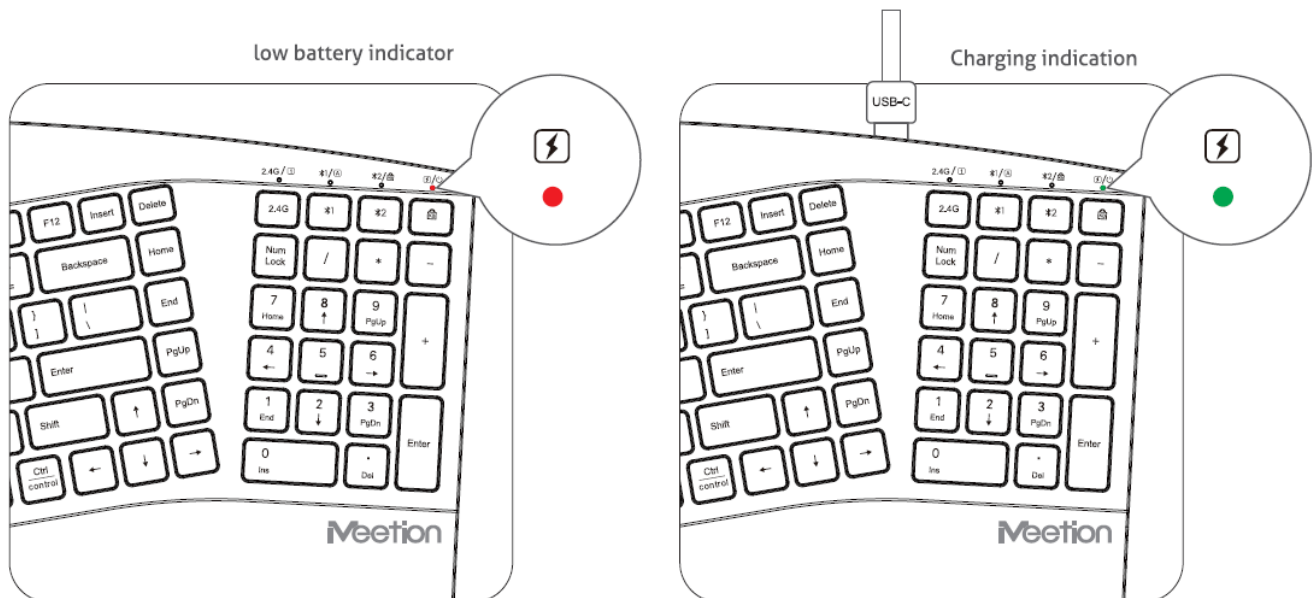
- This red light is always on, and the battery is charging



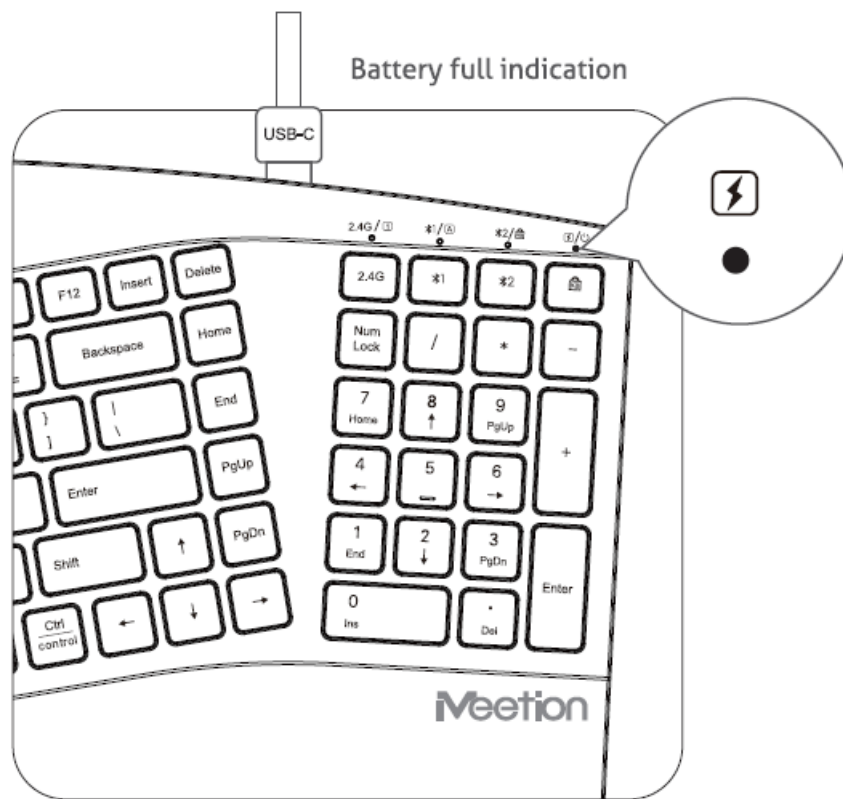
- Red light is off, battery is fully charged

**NOTE:** The charging voltage should not exceed 5V, otherwise the product circuit will be damaged.

#### CHARGE INDICATION KEYBOARD:



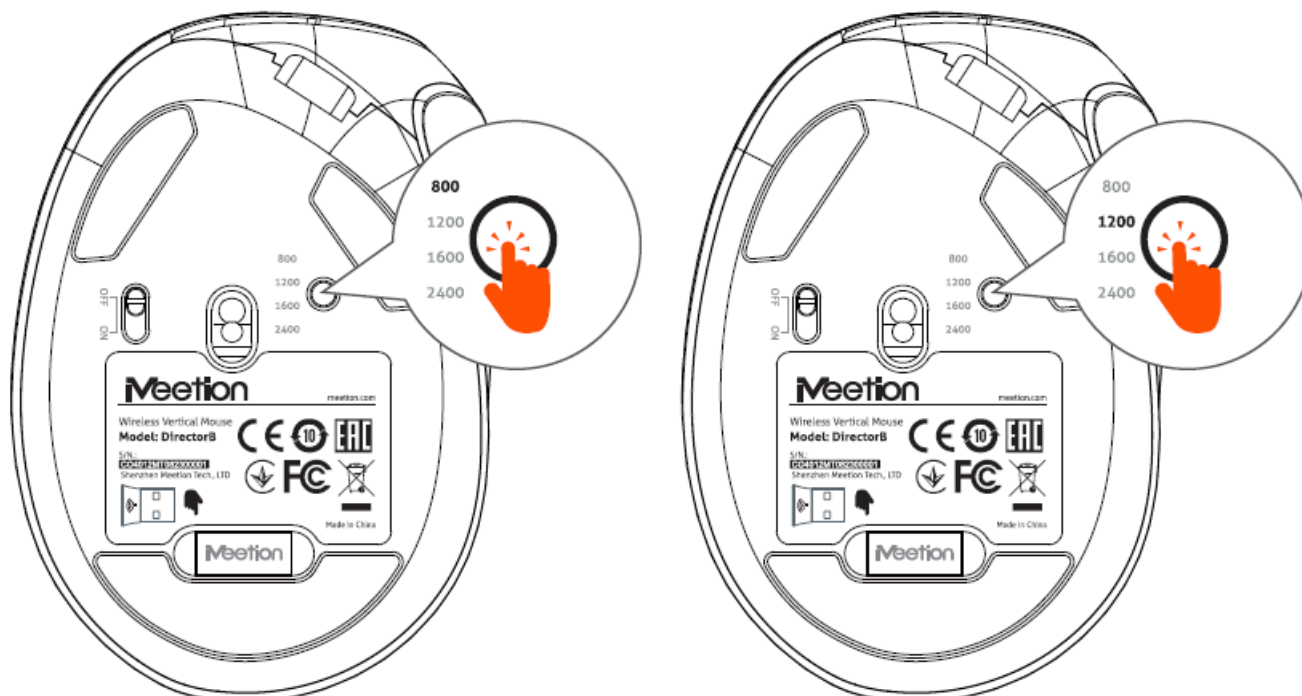
- This red light is blinking, the battery is low
- This green light is always on, the battery is charging



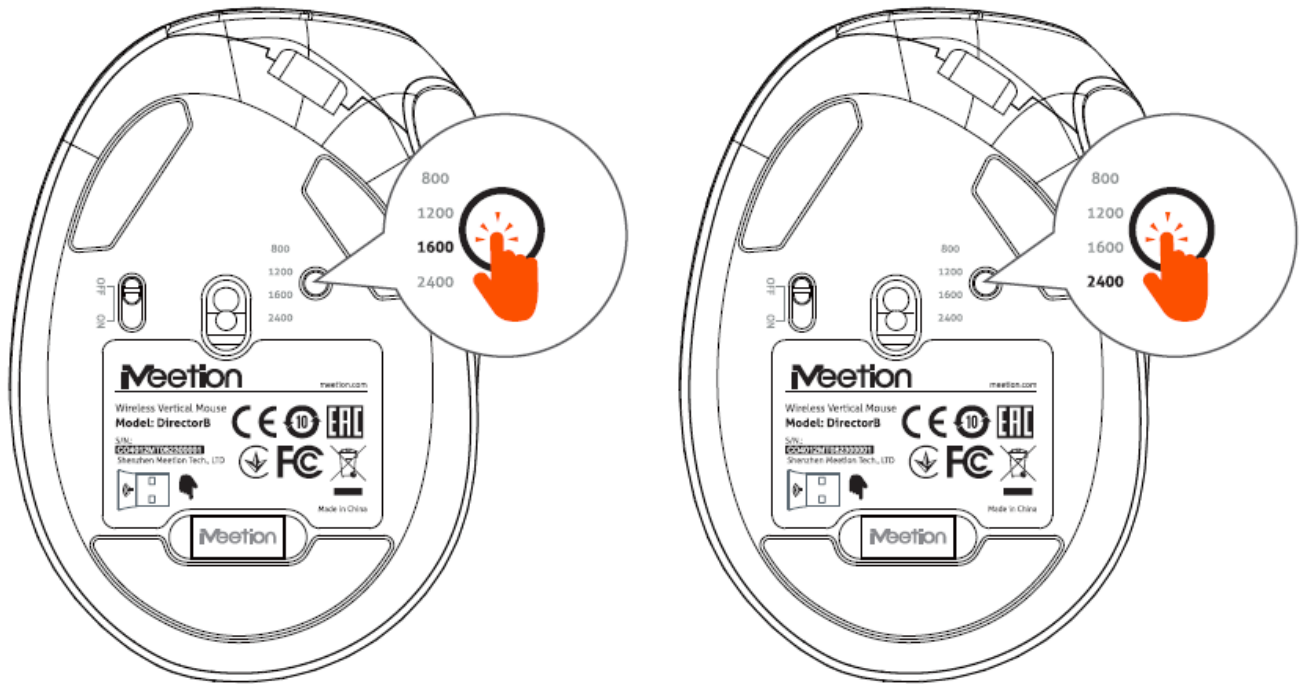
- The green light is off, the battery is fully charged

**NOTE:** The charging voltage should not exceed 5V, otherwise the product circuit will be damaged.

## DPI ADJUSTMENT MOUSE



- Press the DPI button once, 800 DPI (slow cursor movement)
- Press the DPI button again, 1200 DPI (cursor moves moderately)



- Press the DPI button again for 1600 DP! (faster cursor movement)
- Press the DP brastes curst movement)

## GENERAL

The pods in a it in oronto ut mot with the US FC standards withFOC ID: 29706.

## PRECAUTIONS

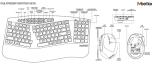
1. This product contains a rechargeable lithium battery.
  1. Do not dismantle, strike, crush, or put it into a fire.
  2. Stop using it immediately if severe swelling occurs.
  3. Do not place it in a high-temperature environment.
2. Do not use this device near water.
3. Only use a dry cloth to clean this product.
4. Please follow the manufacturer's instructions for use.
5. If the device is damaged, for example, if liquid enters it, if it gets wet in the rain orders, is out enised quite mailin meets onelied. For repair

WARRANTY CARD

Model No. 型号		
Date of Sale 购买日期		
Seller 销售商		
Serial Number 序列号		
Address of the Seller 销售商地址		
Phone of the Seller 销售商电话		
Seller Signature & Stamp 销售商签字盖章		
<div>Stamp</div>		
To be Filled in by Service Center 以下由服务中心填写		
Date of Receipt 收货日期	Date of Receipt 收货日期	Date of Receipt 收货日期
Date of Return 返回日期	Date of Return 返回日期	Date of Return 返回日期
Special Marks 特殊记录	Special Marks 特殊记录	Special Marks 特殊记录

Having technical problems with this product?  
Send an email to [service@meetion.com](mailto:service@meetion.com)  
For more information please visit: [www.meetion.com](http://www.meetion.com)

Documents / Resources

	<a href="#">Meetion DirectorC Ergonomic Multi-Device Bluetooth Keyboard and Mouse</a> [pdf] Owner's Manual DirectorC Ergonomic Multi-Device Bluetooth Keyboard and Mouse, DirectorC, Ergonomic Multi-Device Bluetooth Keyboard and Mouse, Multi-Device Bluetooth Keyboard and Mouse, Bluetooth Keyboard and Mouse, Keyboard and Mouse, Keyboard DirectorC, Mouse DirectorC
---	---

References

- [User Manual](#)

