

Contents [[hide](#)]

- [1 Meetion C4130 Wireless Ergonomic Keyboard Mouse](#)
- [2 Product Usage Instructions](#)
- [3 FCC Warning:](#)
- [4 FAQs](#)
- [5 Documents / Resources](#)
 - [5.1 References](#)



Meetion C4130 Wireless Ergonomic Keyboard Mouse



Specifications

- Compliance: FCC Part 15

- Radiation Exposure Limits: FCC approved for an uncontrolled environment
- Minimum Distance: 0cm between radiator and body

Product Usage Instructions

Caution

Any changes or modifications to this device not explicitly approved by the manufacturer could void your authority to operate this equipment.

Compliance Guidelines

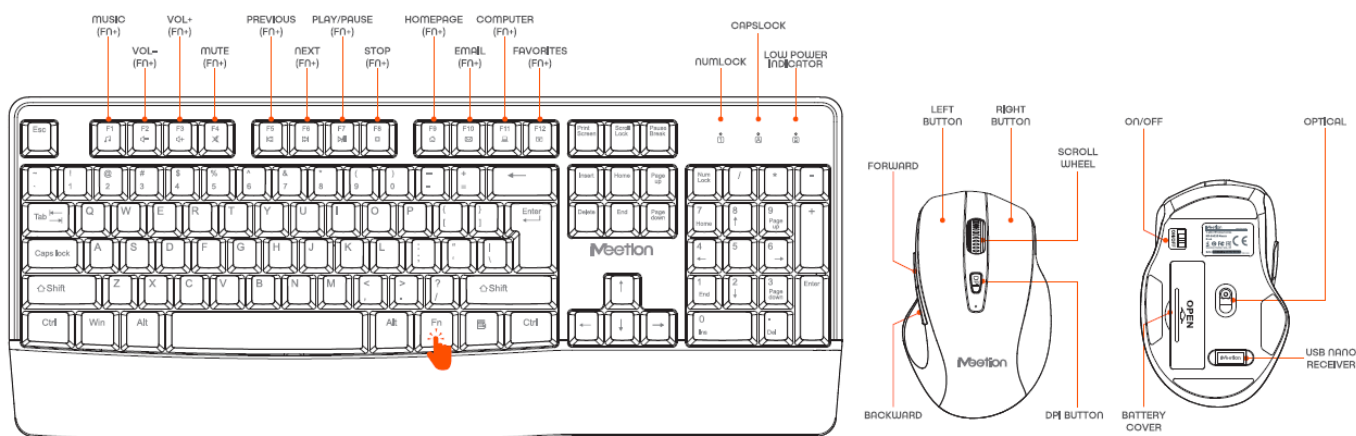
This device complies with part 15 of the FCC Rules. Operation is subject to the following two conditions:

1. This device may not cause harmful interference.
2. This device must accept any interference received, including interference that may cause undesired operation.

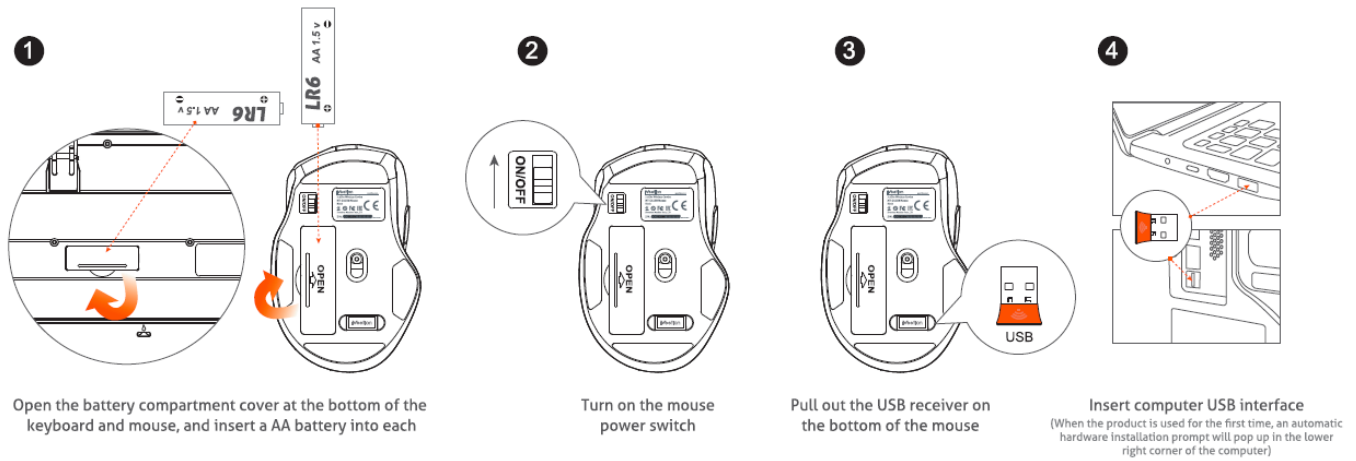
Radiation Exposure

This equipment complies with FCC radiation exposure limits set forth for an uncontrolled environment. It should be installed and operated with a minimum distance of 0cm between the radiator and your body.

FN+MULTIMEDIA FUNCTION KEYS



STEPS FOR USAGE



FCC Warning:

This equipment has been tested and found to comply with the limits for a Class B digital device, under part 15 of the FCC Rules. These limits are designed to provide reasonable protection against harmful interference in a residential installation. This equipment generates, uses, and can radiate radio frequency energy and, if not installed and used by the instructions, may cause harmful interference to radio communications. However, no guarantee that interference will not occur in a particular installation. If this equipment does cause harmful interference to radio or television reception, which can be determined by turning the equipment off and on, the user is encouraged to try to correct the interference by one or more of the following measures:

- Reorient or relocate the receiving antenna.
- Increase the separation between the equipment and receiver.
- Connect the equipment into an outlet on a circuit different from that to which the receiver is connected.
- Consult the dealer or an experienced radio/TV technician for help.

Caution: Any changes or modifications to this device not explicitly approved by the manufacturer could void your authority to operate this equipment.

This device complies with part 15 of the FCC Rules. Operation is subject to the following two conditions:

1. This device may not cause harmful interference, and
2. This device must accept any interference received, including interference that may

cause undesired operation.

This equipment complies with FCC radiation exposure limits set forth for an uncontrolled environment. This equipment should be installed and operated with minimum distance 0cm between the radiator and your body.

FAQs


Q: What should I do if I encounter interference while using the device?

A: If you experience interference, try repositioning the device or moving it to a different location to minimize the impact of external interference.

Q: Can I modify the device for better performance?

A: No, any modifications to the device not approved by the manufacturer can result in voiding the warranty and may cause safety hazards. It is recommended to use the device as intended.

Documents / Resources

	Meetion C4130 Wireless Ergonomic Keyboard Mouse [pdf] User Guide C4130 Wireless Ergonomic Keyboard Mouse, C4130, Wireless Ergonomic Keyboard Mouse, Ergonomic Keyboard Mouse, Keyboard Mouse, Mouse
---	--

References

- [User Manual](#)

MEETION

C4130, C4130 Wireless Ergonomic Keyboard Mouse, Ergonomic Keyboard Mouse, Keyboard Mouse, MEETION, mouse, Wireless Ergonomic Keyboard Mouse

Leave a comment

Your email address will not be published. Required fields are marked *

Comment *

Name

Email

Website

☐ Save my name, email, and website in this browser for the next time I comment.

Post Comment

Search:

e.g. whirlpool wrf535swhz

Search

[Manuals+](#) | [Upload](#) | [Deep Search](#) | [Privacy Policy](#) | [@manuals.plus](#) | [YouTube](#)

This website is an independent publication and is neither affiliated with nor endorsed by any of the trademark owners. The "Bluetooth®" word mark and logos are registered trademarks owned by Bluetooth SIG, Inc. The "Wi-Fi®" word mark and logos are registered trademarks owned by the Wi-Fi Alliance. Any use of these marks on this website does not imply any affiliation with or endorsement.