



Medtronic CareLink Connect App User Guide

[Home](#) » [Medtronic](#) » Medtronic CareLink Connect App User Guide 

Contents

- [1 Setting up & using the CareLink™ Connect app](#)
- [2 Home Screen View](#)
- [3 Documents / Resources](#)
- [4 Related Posts](#)

Medtronic

Setting up & using the CareLink™ Connect app

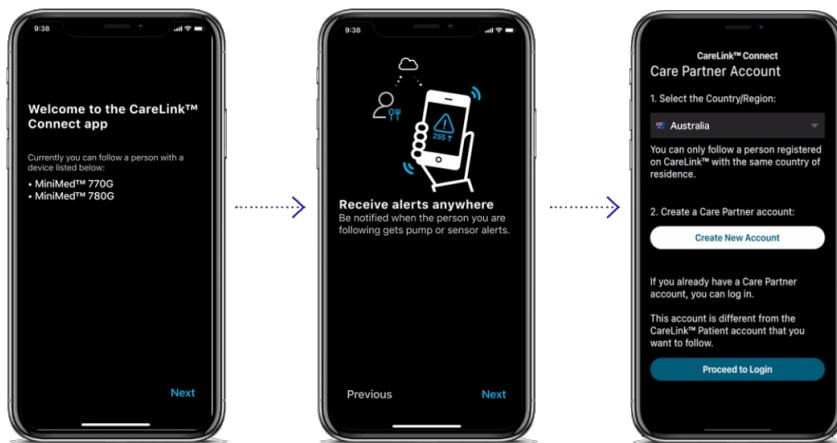
For Care Partners

1 Check the **Compatibility Chart** found on your local website FAQ.

2 Download the **CareLink™ Connect app** on the Apple® or Google Play™ app store.

Important – We recommend to turn off your Operating system auto updates to help ensure that you won't be using an unverified version of the app





3 Follow the **On Screen** prompts.

4 Read the **Dosing Disclaimer** that states dosing decisions should not be made based on the app then get started.

5 Create your **Partner Account**. Once created proceed to login.

6 Send a **Follow Request** by inputting the CareLink™ Personal account username of the person you would like to follow.

7 Pump User **Approves Request** via their CareLink™ Personal account then you are connected

The app is now ready to use.

You are now connected to your partner.

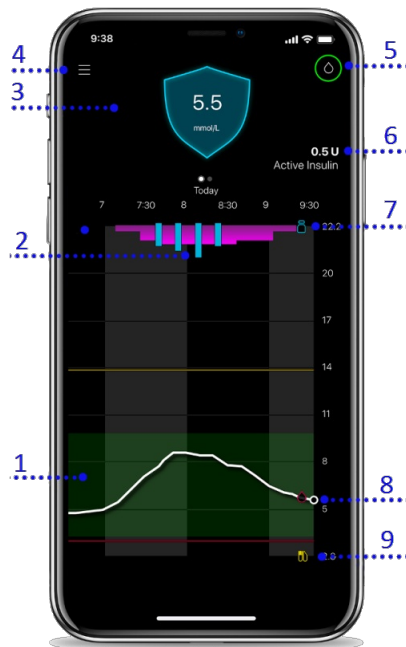


Alerts

History

Time in Range

Home Screen View



1. Time in Range: 3.9-10.0 mmol/L
(green shading)
2. Auto Basal Delivery
Auto Correction Bolus
3. Sensor Glucose Number
(Rate of Change arrow if present)
4. Menu
5. Time until Next Calibration
(Other app or pump status icons may appear here as well)
6. Active Insulin
7. Bolus Insulin
8. Calibration or BG Entry
9. Carbs entered

Personalised diabetes insights **anytime, anywhere.**

Always read the instructions for use.

For detailed information regarding the instructions for use, indications, contraindications, warnings, precautions, and potential adverse events, please consult the device manual. For further information, contact your local Medtronic representative. © 2021 Medtronic Australasia Pty Ltd. All Rights Reserved.



Please note: In contacting the Diabetes Toll Free, your personal and health information may be disclosed to an operator located outside Australia. 10227-102021

Medtronic

Medtronic Australasia Pty Ltd
2 Alma Road
Macquarie Park, NSW 2113, Australia
Tel: +61 2 9857 9000
Fax: +61 2 9889 5167
Toll Free: 1800 777 808

E-Mail: australia.diabetes@medtronic.com
Facebook: www.facebook.com/MedtronicDiabetesAUS
YouTube: [Medtronic Diabetes ANZ](https://www.youtube.com/MedtronicDiabetesANZ)
<https://www.medtronic-diabetes.com.au/>

Documents / Resources

	<p>Medtronic CareLink Connect App [pdf] User Guide CareLink Connect App, CareLink Connect, App</p>
	<p>Medtronic CareLink Connect App [pdf] User Guide CareLink Connect App, Connect App, App</p>