



media-tech MT4208 WLAN USB Adaptor User Manual

[Home](#) » [media-tech](#) » media-tech MT4208 WLAN USB Adaptor User Manual 

Contents

- [1 media-tech MT4208 WLAN USB Adaptor](#)
- [2 Product Information: WLAN USB Adapter 11n \(MT4208\)](#)
- [3 Product Features](#)
- [4 Product Usage Instructions](#)
- [5 Installation](#)
- [6 Configuration](#)
- [7 Environmental guidance:](#)
- [8 Documents / Resources](#)
 - [8.1 References](#)
- [9 Related Posts](#)



media-tech MT4208 WLAN USB Adaptor



Product Information: WLAN USB Adapter 11n (MT4208)

The WLAN USB Adapter 11n (MT4208) is a device that allows you to connect your computer to a wireless network. It provides fast and reliable wireless connectivity with speeds of up to 150Mbps. The adapter is compatible with IEEE 802.11n, IEEE 802.11g, and IEEE 802.11b standards. It operates on a frequency range of 2.4GHz to 2.4835GHz.

Product Features

- Wireless connectivity with speeds of up to 150Mbps
- Compatible with IEEE 802.11n, IEEE 802.11g, and IEEE 802.11b standards
- Operating frequency range of 2.4GHz to 2.4835GHz
- Easy setup with included setup CD
- Automatic installation of software
- Wireless configuration utility for easy network setup

Product Usage Instructions

Before using the WLAN USB Adapter 11n (MT4208), follow these instructions:

1. Insert the included setup CD into your computer's CD-ROM drive.
2. Run the Setup.exe program from the CD to install the software.
3. Do not connect the adapter to your computer before installing the software.
4. If the Found New Hardware screen appears, click Cancel.
5. When the installation is complete, select Yes, I want to restart my computer now and click Finish to reboot your computer.
6. Insert the adapter into an open USB 2.0 port on your computer.
7. The Found New Hardware Wizard screen will appear. Select No, not this time and click Next.

8. Wait for the installation to complete. When prompted, select Install the software automatically (Recommended) and click Next.
9. When the installation is complete, the adapter is ready for configuration.

To configure the WLAN USB Adapter 11n (MT4208) to connect to a wireless network:

1. Right-click the Wireless tray icon in your Windows system tray and select Open Config Utility.
2. The configuration utility will scan for available wireless networks. Click Refresh to update the list.
3. Select the network you want to join and click Add to Profile.
4. If the network is encrypted, input the correct encryption key.
5. For WPA/WPA2 networks, select the correct encryption type (AES or TKIP).
6. If the connection is successful, a dialogue box will appear.

For technical support, visit www.media-tech.eu.

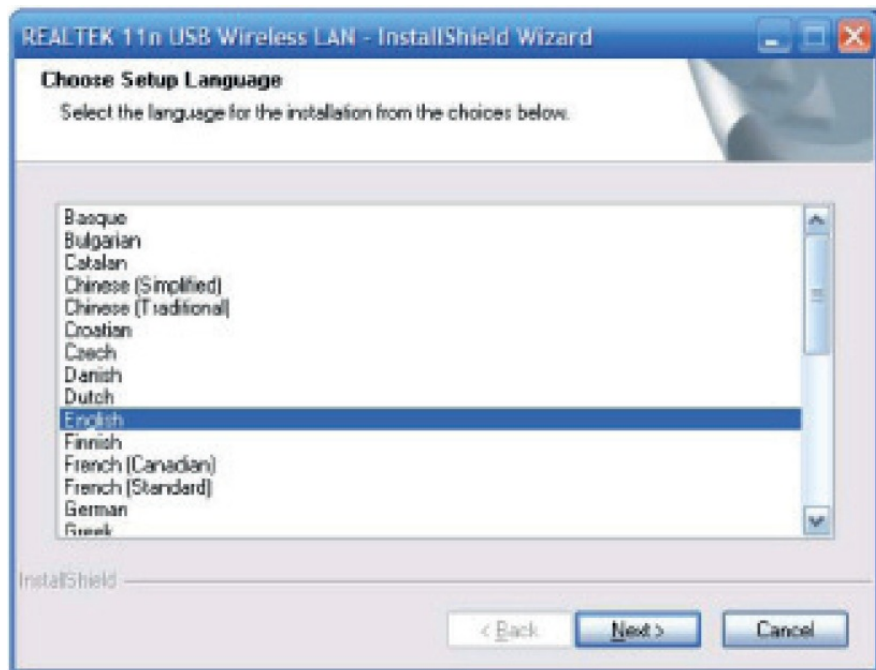
Installation

IMPORTANT: For proper operation, do not connect the WiFi USB Adapter to your computer before you install the software. If you do, wait for the Found New Hardware screen to display and click “Cancel”, otherwise, the installation process will likely be adversely affected.

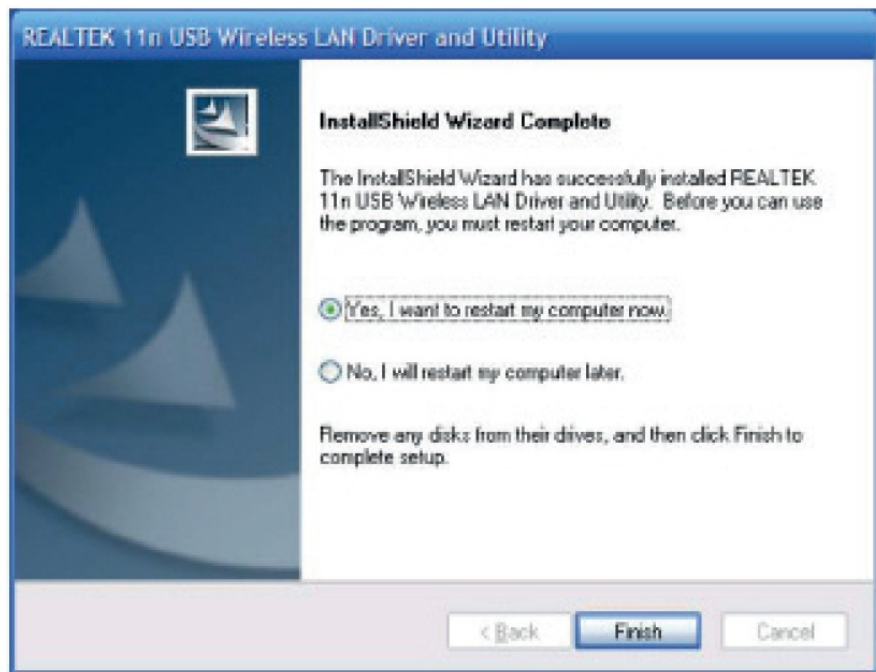
Insert the included setup CD in the CD-ROM Drive and start the Setup.exe program.

Name	Size	Type	Date Modified
DATA		File Folder	7/23/2009 2:05 PM
linux		File Folder	7/23/2009 2:05 PM
MacOS10.4_Universal_Driver...		File Folder	7/23/2009 2:05 PM
Realtek_MacOS10.3_Driver1...		File Folder	7/23/2009 2:05 PM
Release notes		File Folder	7/23/2009 2:06 PM
VistaX64		File Folder	7/23/2009 2:06 PM
VistaX86		File Folder	7/23/2009 2:06 PM
Win98		File Folder	7/23/2009 2:06 PM
Win2000		File Folder	7/23/2009 2:06 PM
WinME		File Folder	7/23/2009 2:06 PM
WinXP		File Folder	7/23/2009 2:06 PM
X64		File Folder	7/23/2009 2:06 PM
_Setup.dll	365 KB	Application Extension	5/17/2006 11:21 AM
autorun.inf	1 KB	Setup Information	8/1/2007 6:18 PM
data1.cab	3,164 KB	WinRAR 压缩文件	5/18/2007 6:41 PM
data1.hdr	56 KB	HDR File	5/18/2007 6:41 PM
data2.cab	4,937 KB	WinRAR 压缩文件	5/18/2007 6:41 PM
ISSetup.dll	481 KB	Application Extension	4/5/2007 2:36 PM
layout.bin	1 KB	BIN File	5/18/2007 6:41 PM
Setup.exe	445 KB	Application	1/20/2007 3:46 AM
Setup.ini	1 KB	Configuration Settings	5/18/2007 4:37 PM

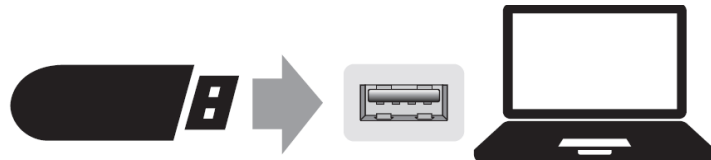
Wait for the installer to run. Select Language and click “Next” to continue with the installation.



The installer will automatically install the program. When finished, select Yes, “I want to restart my computer now” and click Finish to reboot your computer.



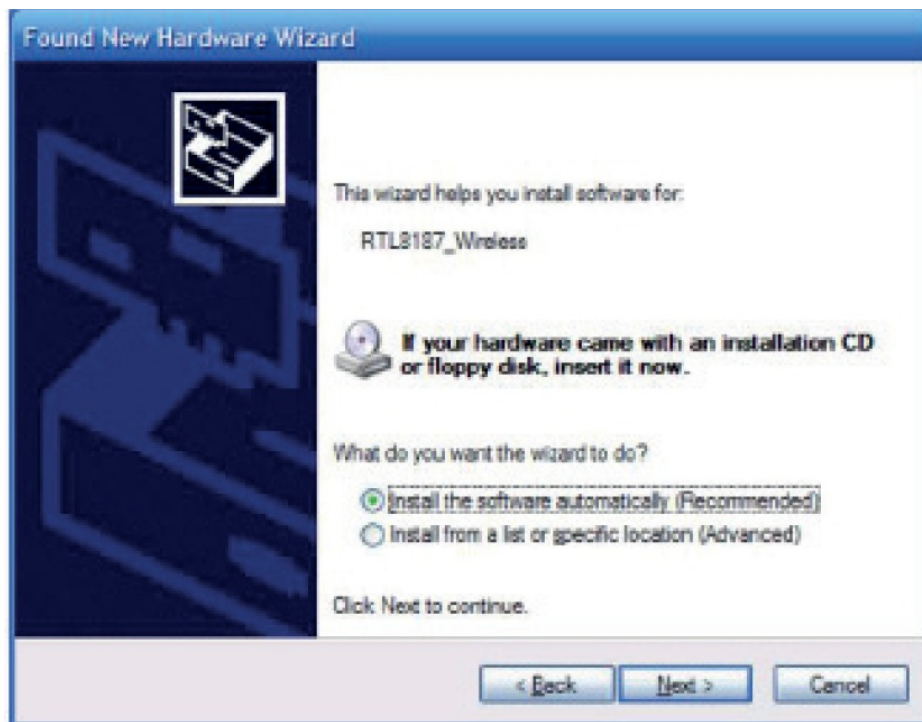
With the computer now turned on, insert the WiFi USB Adapter into an open USB 2.0 port.



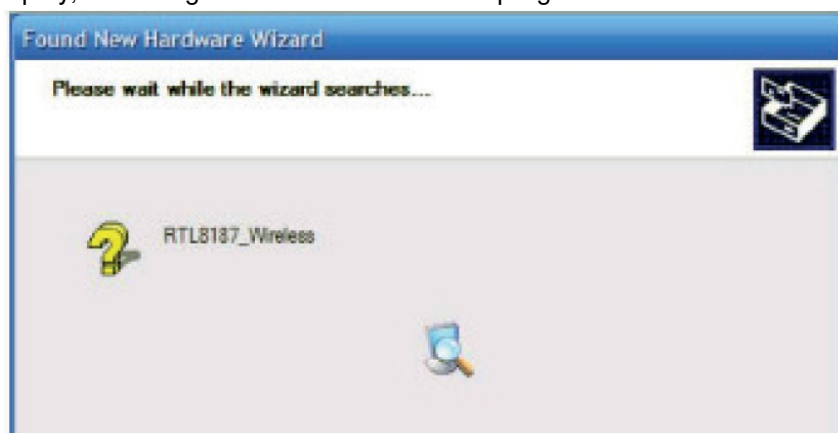
When “Found New Hardware Wizard” screen is displayed (which is automatic when the adapter is connected to the computer), select the option “No, not this time” and click “Next”.



When prompted with “What do you want the wizard to do?” select “Install the software automatically (Recommended)” and click “Next”.



A status screen will display, indicating that the installation is in progress. No action is needed at this point.

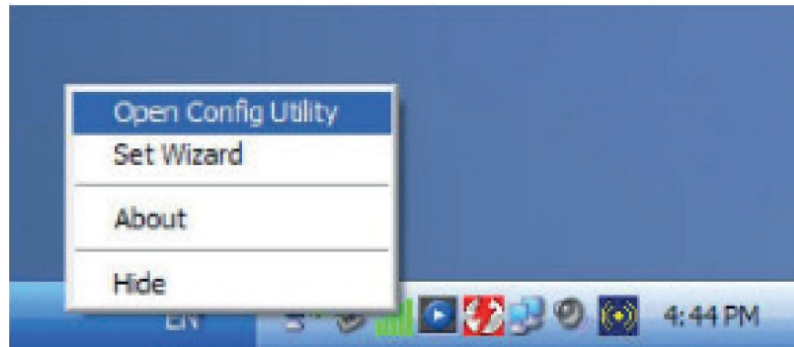


When the “Completing the Found New Hardware Wizard” screen displays, it indicates that the installation has been successfully completed and your WiFi USB Adapter is ready for configuration.

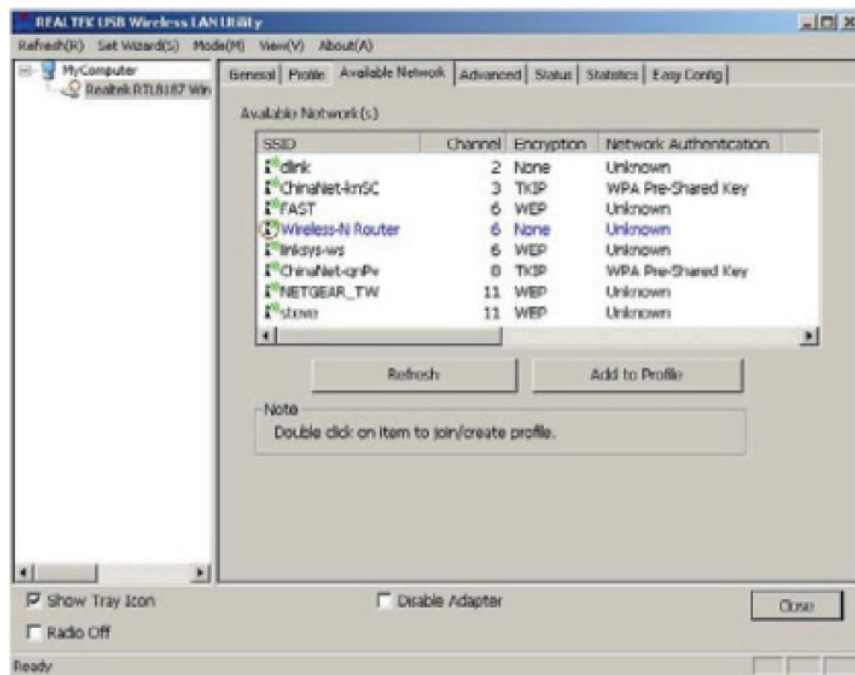
Configuration

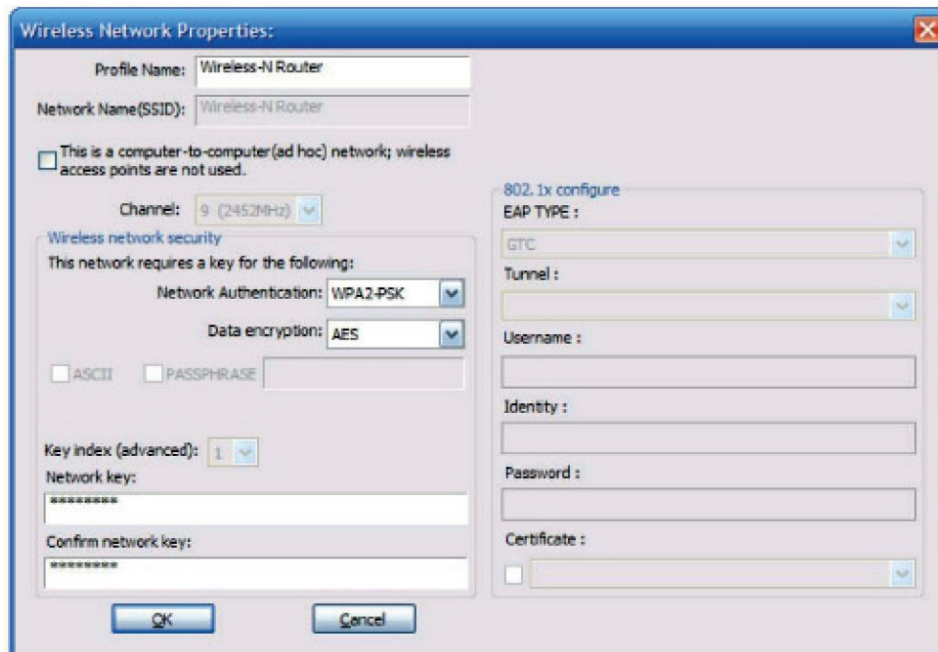
Once the installation is complete, you can configure the WiFi USB Adapter to connect to a wireless access point(AP). The wireless configuration utility will start automatically, and you'll also find a tray icon at the lower right in your Windows systems tray.

1. Right-click the Wireless tray icon and select "Open Config Utility".



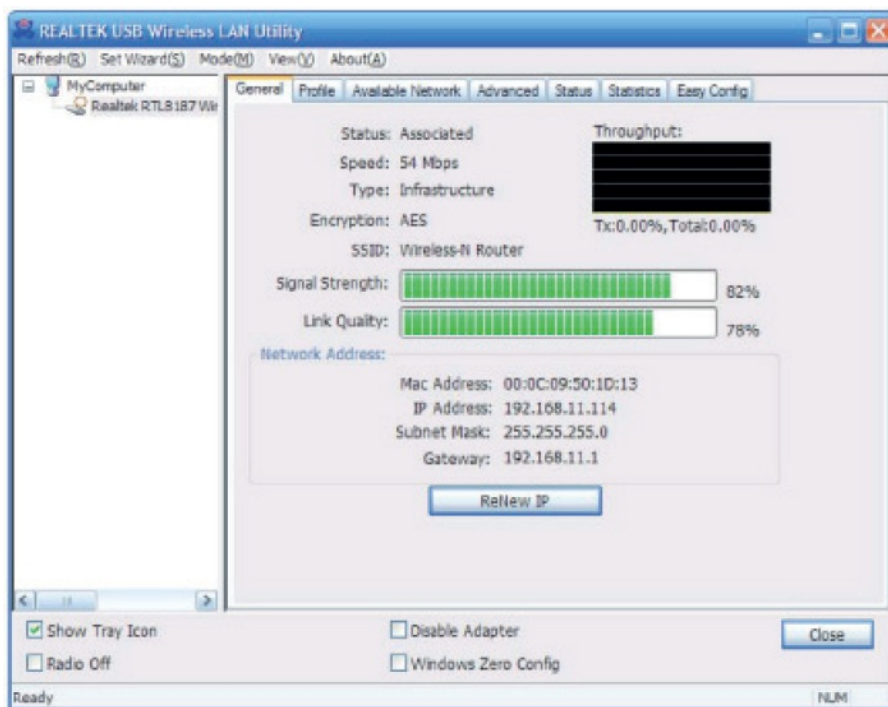
2. The configuration utility will scan for wireless networks within range. Click "Refresh" to refresh the list of available wireless networks. To join a particular network that displays, select it and click "Add to Profile".
3. If the wireless network uses encryption, you need to input the correct encryption key. The configuration utility automatically suggests the correct authentication type (see the drop-down list), and you should not change the suggested value.





NOTE: For WPA/WPA2 networks, you need to select the correct encryption type, as well as (AES or TKIP). These settings depend on how the wireless network is set up. Only the owner of the wireless network can provide the required information.

4. If the wireless access point is successfully connected, you'll see the following dialogue box.




Due to continuous development specification and appearance of product are subject to change without prior notice. For technical support please visit www.media-tech.eu.

Environmental guidance:

The device is marked with the symbol of a crossed out waste container, in accordance with the European Directive 2012/19/EC on waste electrical and electronic equipment. Products marked with this symbol should not be disposed of or disposed of after the end of their useful life together with other household waste. The user is obliged to dispose of waste electrical and electronic equipment by delivering it to a designated point where such hazardous waste is recycled. The collection of this type of waste in separate places and the proper process of their recovery contribute to the protection of natural resources. Proper recycling of waste electrical and electronic equipment has a beneficial effect on human health and the environment. In order to obtain information on where

and how to dispose of waste electrical and electronic equipment in an environmentally safe way, the user should contact the relevant local authority, the waste collection point or the point of sale where he purchased the equipment.

Documents / Resources

	media-tech MT4208 WLAN USB Adaptor [pdf] User Manual MT4208 WLAN USB Adaptor, MT4208, WLAN USB Adaptor, USB Adaptor, Adaptor
---	---

References

-  [Media-Tech Polska • Producer of consumer electronics](#)