



# media-tech MT1123 Vertical Wireless Optical Mouse User Manual

[Home](#) » [media-tech](#) » media-tech MT1123 Vertical Wireless Optical Mouse User Manual 

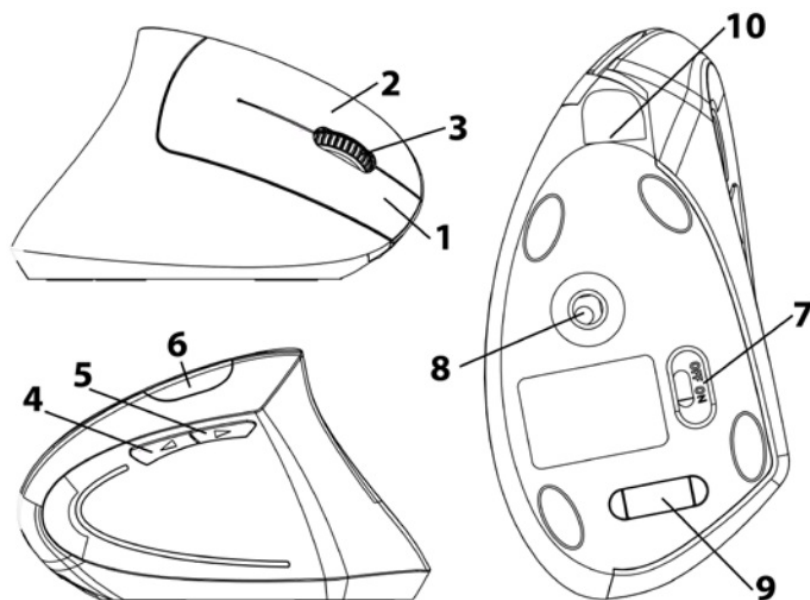
media-tech MT1123 Vertical Wireless Optical Mouse User Manual



## Contents

- [1 OVERVIEW](#)
- [2 Documents / Resources](#)
- [3 Related Posts](#)

## OVERVIEW



1. Right button
2. Left button
3. Middle buton, scrolling wheel, charging LED
4. Forward button
5. Back button
6. DPI adjustment
7. Power switch
8. IR optical sensor
9. RF receiver
10. USB-C charging socket

## Use

1. **Power ON/OFF:** slide (7) switch.
2. **Charging:** Connect USB-C cable, —90min > 100% charged.
3. **DPI charging:** press (6) button to set 1200, 2400, 3200DPI.

**NOTE.** When mouse is not used — always switch it off to save energy.

## FEATURES

- Vertical optical 2.4GHz wireless mouse
- Special vertical design for comfort & safeness in home & office working
- For right-handed users
- Rubber coated housing
- Hi-res optical sensor
- 1200-2400-3200DP1 changeable resolution
- Light illumination and precision tracking
- 5 buttons + scrolling wheel
- Effective distance: up to 10m

- Windows Win 8.1/10/11 32-64bit compatible
- USB A RF dongle
- Power: li-ion rechargeable battery
- Working time on full charge: up to 3 weeks (switched off for non-activity)
- Charging socket: USB-C
- Dimensions 126x64x75mm
- Weight: 87g

**Note.** Mouse is supported by internal Windows system drivers.



#### Environmental guidance:

The device is marked with the symbol of a crossed out waste container, in accordance with the European Directive 2012/19/EC on waste electrical and electronic equipment. Products marked with this symbol should not be disposed of or disposed of after the end of their useful life together with other household waste. The user is obliged to dispose of waste electrical and electronic equipment by delivering it to a designated point where such hazardous waste is recycled. The collection of this type of waste in separate places and the proper process of their recovery contribute to the protection of natural resources. Proper recycling of waste electrical and electronic equipment has a beneficial effect on human health and the environment. In order to obtain information on where and how to dispose of waste electrical and electronic equipment in an environmentally safe way, the user should contact the relevant local authority, the waste collection point or the point of sale where he purchased the equipment.

## Documents / Resources

	<p><a href="#">media-tech MT1123 Vertical Wireless Optical Mouse</a> [pdf] User Manual</p> <p>MT1123 Vertical Wireless Optical Mouse, MT1123, Vertical Wireless Optical Mouse, Wireless Optical Mouse, Optical Mouse, Mouse</p>
--	---