



Medi-Products Standalone Unit Battery Backup Power System Installation Guide

[Home](#) » [MEDI PRODUCTS](#) » Medi-Products Standalone Unit Battery Backup Power System Installation Guide 

Contents

- [1 Medi-Products Standalone Unit Battery Backup Power System](#)
- [2 INSTALLATION](#)
- [3 Complete](#)
- [4 Documents / Resources](#)
- [5 Related Posts](#)

MEDI+PRODUCTS

Medi-Products Standalone Unit Battery Backup Power System



INSTALLATION

Unpack Shipment

Remove each item from the pallet. Each item will weigh LESS than 80 lbs.



Remove Battery Box Covers

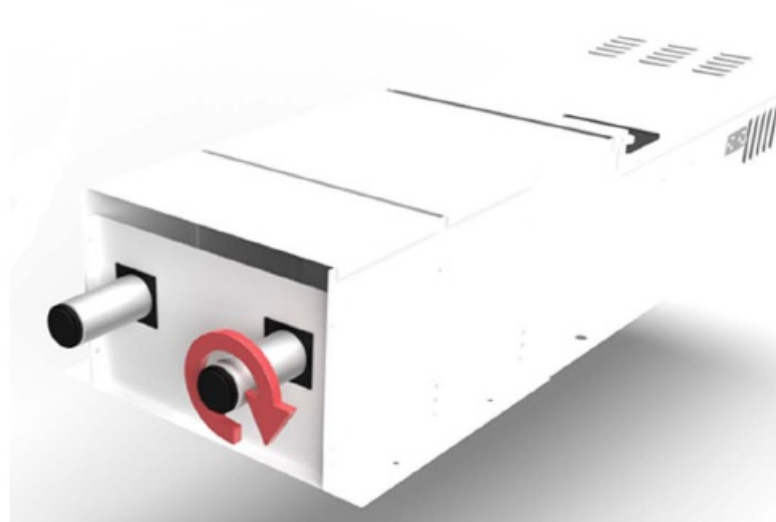
Remove the (2) 1/4-11 hex screws from each battery box cover and remove each cover from the system.

Note: You will find the installation guide and all hardware necessary for installation inside the upper battery box compartment marked "Hardware Enclosed"



Install Feet

Screw each foot onto the bottom of the I system.



Wall Mount System

Stand the system up on its feet, leaning the system against the wall. Then mount the system to the wall using the wall anchors supplied

Note: Refer to the full install guide for further detailed instructions



Install Batteries

Batteries should slide in, with the terminals facing you and the Red terminal on the right side of the user



Install Cables

Carefully fasten the battery cables to the battery in the correct order. Use Black cables for the Black, negative terminals. Use Red cables to connect Red, positive terminals.

Note: Please refer to the full-length install instructions for proper 12, 24, and 48-volt battery cable configurations. (12-volt orientation pictured)



Reinstall Covers

Reinstall the battery box covers using the same 1/4-11 screws that were removed earlier.



System Startup

- **All Systems:** Plug the Unit into a dedicated power outlet
- **V-Series Controller:** Turn the control switch to the “On” Position. Both “Mains On” and “Inverter On” indicators should illuminate. The charging indicator may vary depending on the current level of charge.



- **T-Series Controller:** Turn the control switch to the “Auto/Invert” Position. The “Line In” indicator light should also illuminate at the same time.
 - **Note:** Refer to the procedures listed in the user operating and testing guide for commissioning, using, and testing the system.




Complete

- Your MediProducts standalone battery backup unit is fully installed and ready to protect your most valuable assets.
- If you're having any trouble refer to the full-length installation guide or call us toll-free at: 1-800-765-3237
- Once again, we thank you for choosing MediProducts.

Thank you for purchasing a Medi Products Standalone battery backup system!

- We are certain you will now be at ease knowing that your most valuable equipment has the protection it needs.
- This quick start guide will assist you in getting your standalone system ready to deploy as soon as possible

Documents / Resources



[Medi-Products Standalone Unit Battery Backup Power System](#) [pdf] Installation Guide Standalone Unit, Standalone Unit Battery Backup Power System, Battery Backup Power System, Backup Power System, Power System, System