

MECHLANDS

MC66 RGB Tri Mode Mechanical
Gaming Keyboard



Mechlands MC66 RGB Tri Mode Mechanical Gaming Keyboard User Guide

[Home](#) » [Mechlands](#) » Mechlands MC66 RGB Tri Mode Mechanical Gaming Keyboard User Guide 

Contents

- [1 Mechlands MC66 RGB Tri-Mode Mechanical Gaming Keyboard](#)
- [2 Product Information](#)
- [3 Product Usage Instructions](#)
- [4 Specifications](#)
- [5 TECHNICAL ASSISTANCE](#)
- [6 WARRANTY](#)
- [7 Frequently Asked Questions](#)
- [8 Documents / Resources](#)
 - [8.1 References](#)
- [9 Related Posts](#)

MECHLANDS

Mechlands MC66 RGB Tri-Mode Mechanical Gaming Keyboard



Product Information

- **Product Name:** MechLands
- **Manufacturer:** Unknown

Specifications

- **Dimensions:** 10in x 5in x 2in
- **Weight:** 1.5 lbs
- **Material:** Plastic
- **Color:** Black

Product Usage Instructions

Unpacking and Setup

1. Unbox the MechLands product carefully.
2. Remove all packaging materials.
3. Place the MechLands on a flat and stable surface.

Powering On the MechLands

1. Connect the power adapter to the MechLands.
2. Plug the power adapter into a power outlet.
3. Press the power button to turn on the MechLands.

Using the MechLands

1. Follow the on-screen instructions to navigate through the menus.

2. Use the provided remote control to interact with the MechLands.

Maintenance and Care

1. Clean the MechLands regularly with a soft, dry cloth.
2. Avoid exposing the MechLands to direct sunlight or extreme temperatures.

65% Hot Swappable RGB Tri-mode mechanical Gaming keyboard

This Quick Guide is an introduction to the use and functionality of the Mechlands MC66. For an in-depth guide of the functionality of the customization software, please refer to the manual that you can find on the official Mechlands website at www.mechlands.com. Should you require more assistance, please email us at support@mechlands.com

Specifications

- **MODEL:** Mechlands MC66
- **WEIGHT:** 1000g + 50g
- **SIZE:** 302 x 116 x 42mm
- **HOTSWAP:** YES
- **NKRO:** Yes
- **KEYCAPS:** PBT Keycaps
- **SYSTEM:** Windows / Mac / Android
- **LAYOUT:** 65 Keys+ Knob
- **CONNECTION:** USB-C, 2.4GHz Wireless, Bluetooth 3.0/Bluetooth 5.0.
- **BUILT-IN BATTERY:** 4000 mAh

WINDOWS SHORTCUTS		MACOS-SHORTCUTS	
FN + 7	Last Song	FN + 7	Last Song
FN + 8	Play/ Pause	FN + 8	Play/ Pause
FN + 9	Next Song	FN + 9	Next Song
FN + 0	Mute	FN + 0	Mute
FN + -	VOL -	FN + -	VOL -
FN + +	VOL+	FN + +	VOL+
FN + Q	Wired	FN + Q	Wired
FN + W	Bluetooth Device 1	FN + W	Bluetooth Device 1
FN + E	Bluetooth Device 2	FN + E	Bluetooth Device 2
FN + R	Bluetooth Device 3	FN + R	Bluetooth Device 3
FN + T	2.4GHz Wireless	FN + T	2.4GHz Wireless
FN + A	PC Mode	FN + A	PC Mode
FN + S	Mac Mode	FN + S	Mac Mode
FN + I	E-mail	FN + 1	Screen brightness-
FN + D	Calculator	FN + 2	Screen brightness+
FN + F	Search	FN + 3	Mission Control
FN + Y	Home	FN + 4	Launch pad
FN + U	Computer	FN + Tab	Switch the backlight mode
FN + Tab	Switch the backlight mode	FN + ''	Switch the light color
FN + ''	Switch the light color	FN + L-Ctrl	Toggle the side glow effect
FN + L-Ctrl	Toggle the side glow effect	FN + ↑ / ↓	The backlight brightness+/-
FN + ↑ / ↓	The backlight brightness+/-	FN + ← / →	Backlight speed+/-
FN + ← / →	Backlight speed+/-	FN + WIN	Lock/Unlock Windows Key
FN + WIN	Lock/Unlock Windows Key	FN + CAPS	Enter the gaming light recording mode
FN + CAPS	Enter the gaming light recording mode	FN + G	Game mode effects(W/A/S/D / ↑ / ↓ / ← / → key light up in Red)
FN + G	Game mode effects(W/A/S/D / ↑ / ↓ / ← / → key light up in Red)	FN+Spacebar	Long press 3s to restore the default setting
FN + Spacebar	Long press 3s to restore the default setting	FN+Backspace	F1 row and the number row are converted
FN + Backspace	F1 row and the number row are converted	FN + Backspace	F1 row and the number row are converted

PAIRING BLUETOOTH:

- FN+W/E/R Long Press for 3 seconds to pair Bluetooth device
- FN+W/E/R Short Press to switch to the last paired device
- Long press the FN+W/E/R for 3 seconds, the keyboard will start pairing and the blue/purple/green light of the channel 1/2/3 will flash quickly.
- Short press FN+W/E/R to switch to the bluetooth channel 1/2/3. When switching, the blue/purple/green light of the channel 1/2/3 flashes slowly
- The blue/purple/green light will always be on after the connection is successful if it has never been paired; the blue/purple/green LED will flash slowly for 1 minute, and then the keyboard enters the sleep state

PAIRING WIRELESS 2.4GHz:

- FN+T Switch to Wireless Mode
- Short press FN+T to switch to 2.4G mode. When switching, the red light of the mode switching indicator flashes slowly.

CHARGE INDICATOR



- **Low power:** LED flashes red (When the battery voltage is lower than about 3.3V)
- **Charging:** Blue light is always on
- **Fully charged:** Green light is always on

KEYBOARD SLEEPING MODE:

- When the keyboard is connected to the USB port, whether in Bluetooth mode or 2.4G mode, the keyboard will not go into sleep mode.
- When the keyboard is in Bluetooth mode or 2.4G mode, after the keyboard is left to stand for 300 seconds, the keyboard enters level 1 sleep, the backlight is turned off, and press any key to restart the backlight. Then, after the keyboard continues to stand for more than 30 minutes, the keyboard enters level 2 sleep. Press any key to connect back to the keyboard.



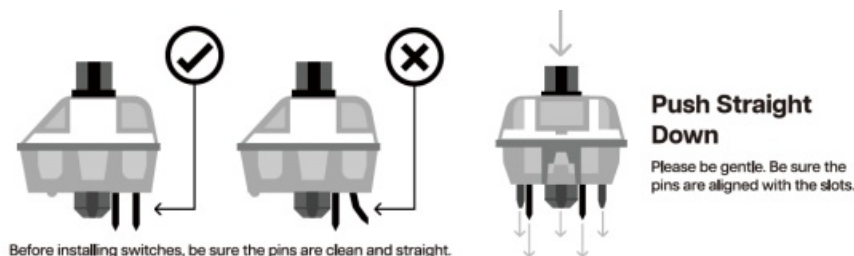
Turn clockwise to increase the volume

- Turn it counterclockwise to decrease the volume

REPLACING KEYCAPS AND SWITCHES

For a full guide on how to remove keycaps and switches, scan the QR Code or type in your browser:

<https://epomaker.com/blogs/guides/diy-guide-how-to-remove-and-replace-your-mechanical-keyboard-switches>



Included Tools



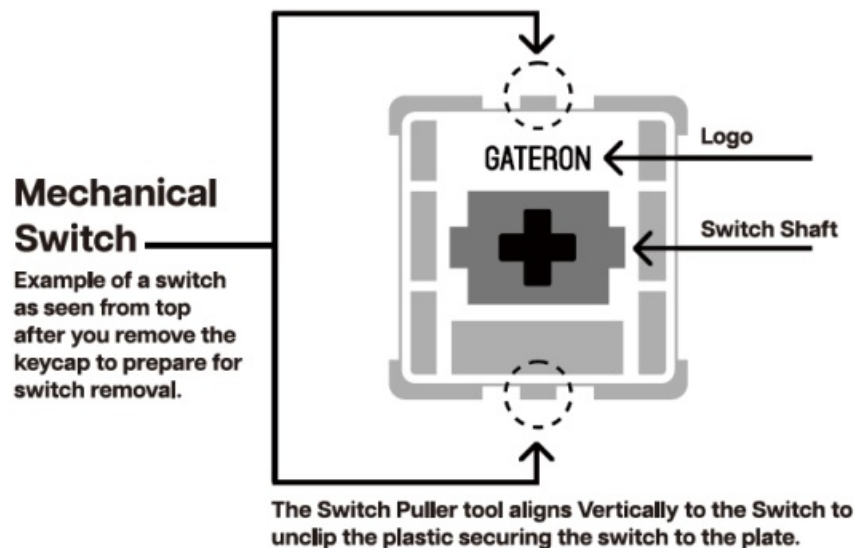
Switch Puller



Keycap Puller

Remove Switches

1. Grab your Switch Removal Tool and align the gripping teeth vertically (on the Y-Axis) at the center of the switch, as shown in the example graphic above.
2. Grab the switch with the Switch Puller and apply pressure until the switch releases itself from the plate.
3. Using firm but gentle force, pull the switch away from the keyboard using a vertical motion.



Install Switches

1. Check that all the switch's metallic pins are perfectly straight and clean.
2. Align the switch vertically to have the Gateron logo facing north. The pins should align themselves to the keyboard PCB.
3. Press the switch down until you hear a click. This means your switch clips have attached themselves to the keyboard plate.
4. Inspect the switch to ensure it's properly attached to your keyboard, and test it.

Note:

If the key doesn't work, you may have bent one of the switches while installing it. Pull the switch out and repeat the process. The pins may be damaged beyond repair and need replacement if this process is not done correctly. Never apply excessive force when replacing keycaps or switches. If you cannot remove or install keycaps or switches, please contact customer service as soon as possible to avoid damage to the keyboard due to operating errors.

Downloaded from thelostmanual.org

TECHNICAL ASSISTANCE

- For technical assistance, please email WWW.MECHLANDS.COM with your purchase order number and a detailed description of your issue.
- We normally respond to inquiries within 24 hours. If you purchased your keyboard from a distributor and not from any official store of MechLands, please contact them directly for any additional help.

WARRANTY

- MECHLANDS's Warranty covers any factory defects that might affect the proper functionality of your purchase. It doesn't cover any damage that may occur from normal wear and tear. If your product is defective, we will send you a replacement unit. Replacement units might require you to send the defective unit back to MechLands.
- We provide a one-year warranty for our products when bought from our website (MECHLANDS.com). Your 1-year warranty will not cover your item if the inspection shows any sign of modification or changes unsupported by the original product. These include changing internal components, assembling and reassembling the product, Replacing Batteries, etc.
- We will ONLY cover the item if it is bought from our official stores. You do not have a warranty with us if you bought the item from another reseller or likewise. Please contact the store that you bought your product from to resolve issues.

Made in China



- Manufacturer: Shenzhen Yiyu Technology Co., Ltd.
- Address: Seventh Floor, Cadregroup Building, No.168 Tongsha Road,
- Xili Street, Nanshan District, Shenzhen, Guangdong, CN
- E-mail: support@mechlands.com
- Web: www.mechlands.com

EC REP

- OST_EU, 2022071100

eVatmaster Consulting GmbH

- Bettinastr. 30
- 60325 Frankfurt am Main, Germany
- contact@evatmaster.com

UK REP

- OST_UK_ 20220711000015

EVATOST CONSULTING LTD

- Suite 11. First Floor. Moy Road Business'g
- Centre, Taffs Well, Cardiff, Wales, CF15 7QR
- contact@evatmaster.com

Frequently Asked Questions


- **Q: How do I reset the MechLands to factory settings?**

A: To reset the MechLands, go to Settings > System > Reset to Factory Settings.


- **Q: Can I connect external speakers to the MechLands?**

A: Yes, you can connect external speakers using the audio output port on the MechLands.

Documents / Resources

	Mechlands MC66 RGB Tri Mode Mechanical Gaming Keyboard [pdf] User Guide MC66 RGB Tri Mode Mechanical Gaming Keyboard, MC66, RGB Tri Mode Mechanical Gaming Keyboard, Tri Mode Mechanical Gaming Keyboard, Mechanical Gaming Keyboard, Gaming Keyboard, Keyboard
---	--

References

-  [One moment, please...](#)
- [User Manual](#)

[Manuals+.](#) [Privacy Policy](#)

This website is an independent publication and is neither affiliated with nor endorsed by any of the trademark owners. The "Bluetooth®" word mark and logos are registered trademarks owned by Bluetooth SIG, Inc. The "Wi-Fi®" word mark and logos are registered trademarks owned by the Wi-Fi Alliance. Any use of these marks on this website does not imply any affiliation with or endorsement.