



MECHEN 32GB Player with Bluetooth User Guide

[Home](#) » [MECHEN](#) » MECHEN 32GB Player with Bluetooth User Guide 

Contents

- [1 MECHEN 32GB Player with Bluetooth](#)
- [2 Music](#)
- [3 How to Remove Songs from the Playlists?](#)
- [4 Bluetooth](#)
- [5 Ebook](#)
- [6 Settings](#)
- [7 Recorder](#)
- [8 FM Radio](#)
- [9 Trouble Shooting](#)
- [10 Documents / Resources](#)
 - [10.1 References](#)

MECHEN

MECHEN 32GB Player with Bluetooth



Music

Tap the icon of Music you will find the lists below:

Now Playing	<input type="radio"/>
All songs	<input type="radio"/>
Local folder	<input type="radio"/>
Card folder	<input type="radio"/>
Artists	<input type="radio"/>
Albums	<input type="radio"/>
Genres	<input type="radio"/>
Playlists	<input type="radio"/>
Update Playlist	<input type="radio"/>

The 2 folders appear when you've inserted a memory card inside ONLY!

All songs

Here you can find all the songs you've saved in this music player. The quantity of songs will be displayed at the top if you tap All songs. You can choose songs by tapping the left and right arrows at the bottom. Simply tap the name of the song to play it.

Last played

Here is the song you played last time, by tapping Last Played, it will play from where it stopped last time.

Artists

All the songs sang by the same singer would be put under his/her name.
In a word, the songs are sorted by singer's name under this menu.

Albums

Music tracks are sorted by Albums.

Playlists

There are 3 Playlists which cannot be deleted or added.

2 Ways to Add a Song to the Playlist

- 1) Tap the button to add it to the playlists, you will find the song under the playlist 1
- 2) Tap the sub-menu at the top right of the song when you're playing it, find the option Add to playlist, choose which playlist you want to add to.

How to Remove Songs from the Playlists?

Method 1

1. Go the certain Playlist where you've added the song
2. Select the song and tap the button at the right top, find the option Remove from playlist, click it and choose Yes to delete it from the Playlist.

Method 2

1. When you're playing a song, hit the icon ●●● on the top right
2. Select Remove from Playlist

How to Set the Repeat mode?

1. When the song is being played, hit the icon ●●● on the top right
2. Select the 1st option Play mode
3. There are 4 choice below: Repeat off, Repeat 1, Repeat all, Shuffle

Repeat off: songs won't be repeat at all

Repeat 1: one song will be played repeatedly

Repeat all: all the songs will be repeated

Shuffle: songs will be played randomly

Is There Equalizer on This Music Player?

Yes.

1. You can find it in Sound settings under the sub-menu of the song.
2. Tap the choice Equalizer to choose what you prefer:
Rock Funk Hip Hop Jazz Classical Techno Custom

How to Use Bookmarks?

There are limited 10 Bookmarks.

1. When the song is being played, tap Add bookmark to decide where it starts.
2. When you finished the bookmark, tap Go to bookmark and choose the bookmark.
3. Once you chose a bookmark, it starts playing from the point where you add the bookmark.

How to Set Speed Playback?

1. When the song is being played, hit the icon ●●● on the top right
2. Select Sound settings
3. Select Variable Speed Playback
4. You can set the rate from -8 to 8. Positive numbers indicate speed up, negative numbers indicate speed down.
5. Click the button OK to save the settings.

Bluetooth

What Bluetooth Device Can be Connected With?

Bluetooth earbuds, Bluetooth headphones, Bluetooth speakers are able to connect with the music player, while mobile phones, laptops, computers are not.

How to Make the Bluetooth Connection?


1. Tap the Bluetooth switch control under the menu of Bluetooth
2. Turn on Bluetooth
3. Select the option Switch for device
4. Please make sure you've unpaired the Bluetooth device such as Bluetooth buds, Bluetooth headphone, Bluetooth speaker with your mobile phone, computer, tablet PC, cars ...Or the Bluetooth device cannot be found.
5. Once the Bluetooth device was found, you will find the device name on the list.
6. Tap on the device name and choose Match
7. If the Bluetooth connection is done, you will find the icon of Bluetooth turns to Green.

How to Disconnect With the Music Player?

1. Go to The device list and find the device name.
2. Tap the device name and select Unpair.

Ebook

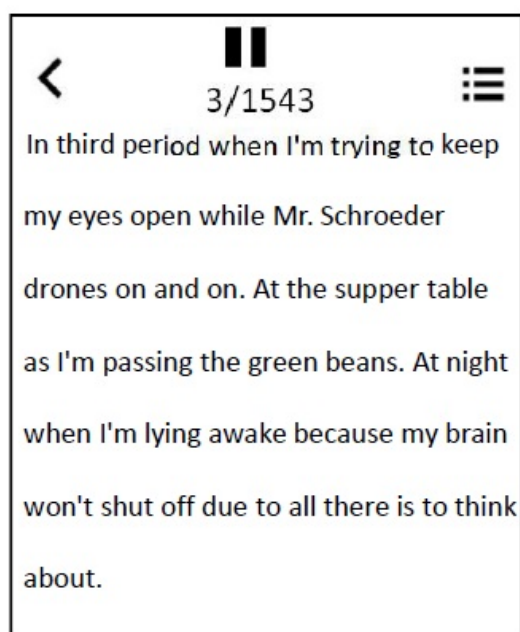
TXT format ONLY!

Hit the icon  on the top right, you will find the sub-menu:

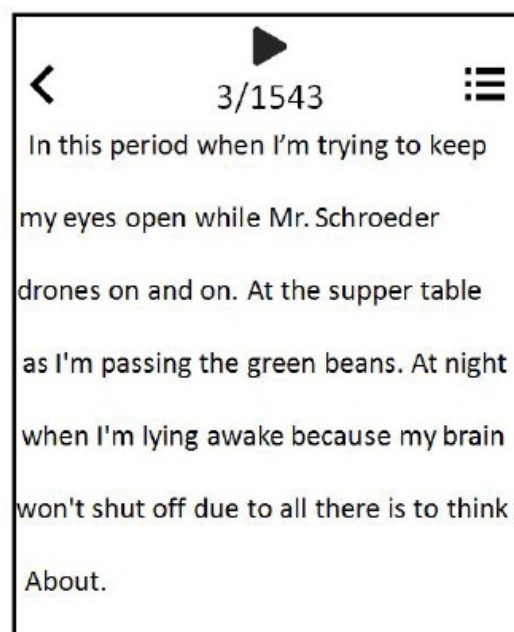
Playsetting	<input type="radio"/>	02-30 seconds, set the auto-page-turn-time
Delete ebook	<input type="radio"/>	
Bookmark Select	<input type="radio"/>	
Delete bookmark	<input type="radio"/>	
Add bookmark	<input type="radio"/>	
Page select	<input type="radio"/>	Normal, Large
Font size	<input type="radio"/>	
Ebook background	<input type="radio"/>	

How to start/pause the auto-page-turn?

Open an ebook, and tap the icon in the middle of the top to start or pause the auto-page-turn.



Turn on



Pause

Settings

How to Set Languages?

There are 28 languages built-in, please find the Language under the menu of Settings, and choose your local language by tapping the left and right arrow under the screen.

Once you've selected the language, the circle beside the language turns into purple, and the screen goes back to the menu list of Settings.

How to Adjust The Brightness Of the Screen?

Select the 2nd option-Display settings- under the menu of Settings

Select Brightness, adjust the brightness by increase or decrease the numbers: the brightest is 11 and the darkest is 0.

Tap OK to save the settings. The music will notify you Brightness set once the setting is done.

What is Backlight Timer?

Backlight timer means whether the backlight works and how long it works.

You can set the backlight time in 10 seconds, 30 seconds, 60 seconds and Always on. If you set it in 10 seconds, that means screen turns black after 10 seconds.

Set backlight timer helps to save power.

What is Screensaver?

Under the menu of Settings, you will find Screensaver by tapping the 3rd option Display settings. You can choose None or Digital Clock to be your screensaver. None means there is no screensaver, the screen just blank out.

How to set the lock screen wallpapers?

1. Go to Settings-Display settings
2. Select the last one: screen saver background selection
3. There are 10 images for you to choose
4. When the screen is locked, swipe right on the screen to switch the screen saver background

How to Turn on/ Off Sleep Timer?

1. Tap the icon of Settings.
2. Choose Sleep Timer under the menu.
3. Click Off to turn off the Sleep Timer.
4. Set Sleep Timer by increase or decrease minutes of sleep time, tap the button OK to save the setting. When you finish the sleep timer, you will find the message such as Time left [06]minutes, which means the machine goes to sleep after 6 minutes.

What is Idle Shutdown and How to Set it?

Idle shutdown means if there is no operation, the music player will shut off automatically. You can turn it on or off under the menu of Settings-Power off Timer.

How to Set Time?

1. Please find the 5th option Date and Time under the menu of Settings.
2. Select Time settings-set time format, there are 12-hour and 24-hour time format to choose
3. Select set time to set the specific time

How to Set Date?

1. Please find the 5th option Date and Time under the menu of Settings.
2. Select the option Date settings-set date format
3. There are 3 options: DD MM YYYY, MM DD YYYY, YYYY MM DD, simply select the format you prefer
4. Set the date by adjust the date, month and year
5. Once you finished the time adjustment, please tap the button OK to save the settings.

May I Know Any Information Of the Music Player?

Yes, please go to the Information under the menu of Settings, where you'll find the Player information (what model and version it is) and the Disk space.

How to Format the Music Player?

If you do decide to format the music player, please select Format device under the menu of Settings. All data will be deleted if you approve to format it, please take care.

How to Restore the Factory Settings?

1. Go to the bottom of the list of menu under Settings, you will find the option Factory settings.
2. Choose yes if you agree to restore the factory settings, but please consider twice before you make the decision.

Recorder

How to Record From Line In?

1. Go to the list of menu under Recorder, tap the 3rd option Record from
2. Choose Line In
3. After that, all the recorder pieces you've made will be record from Line In.


How to Set the Bitrate Of the Recorder?

1. Check the menu of Recorder and find set rec bitrate.
2. You will find 4 options: 512kbps, 768kbps, 1024kbps, 1536kbps.

What is the AVR mode for?

Hi, AVR mode means voice activated recording, if you turn on this mode, it record when sound be captured, otherwise, it paused.

How to turn on the AVR mode?

Hit the icon  and select the last option Record settings
Select Set AVR mode-AVR mode
Once you finished setting, you can go back and start a voice recording.

FM Radio

Attention: Must insert a wired headset to work!

What Tuner Regions Do You Have?

Common Band, Japan Band and European Band.
Please choose the tuner region according to you location.

What is Auto Tune and How to Use it?

By applying the Auto tune, the music player automatically search radio stations and add them to the presets, so you don't have to search manually, what's more, you can choose the preset tunes to listen the radio directly.

Can I record the FM radio?

Yes. When playing the fm radio, tap the icon ●●● on the top right, select Start FM radio recording, that's it!

Where are my recording files?

Hi, you can find the recording files in Recording library in Recorder.

Meanwhile, you can also find the recording files in the Folder view, the folder name is RECORD.

And the folder FMRECORD saved the fm radio recordings.

Trouble Shooting

1. Does not play all songs completely, then stops playing.

1. Please make sure you did download a complete song, if the song is not complete, what you hear from the music player is not complete.
2. Please make sure you download the music files in formats below: MP3, AAC, APE, FLAC, WMA, WAV. Or else, the music player won't play the song.
3. Please pay attention that only 4000 tracks can be displayed under the music view, if you've saved over 4000 tracks, please check the folder view, the complete music tracks are displayed there.

2. Does not download from iTunes.

No, you cannot download from iTunes to the MP3 player directly.

3. It will not download MP3 music files from my computer.

Hello, please pay attention that there is no relationship between the downloading failure with the MP3 player, coz the downloading is carried out on the computer, only when you finished the downloading, you can copy or shear the files to the music player. So we suggest you to check the music apps on your computer and find out if there is anything wrong. Or try to download from some other apps.

4. Weird???appear on half of artists I transferred to the device. I don't understand what that happened, but please fix it.

Do you mean only half of artists appeared on the device?

Have you ever check if any songs are missing? Because if music files are not in the format of MP3, AAC, APE, FLAC, WMA, WAV, they will not display in the music player.

5. It freezes, buttons don't work as supposed to, and does not accept all songs.

The music player doesn't accept all songs unless the formats are MP3, AAC, APE, FLAC, WMA, WAV. Please double check the music files you've saved in this device.

6. While it does have WIFI capability, mine has some issues that need to be addressed. It only has 3-4 Playlists, and it does not always accept certain tracks.

Not so intuitive. Every song has to be loaded individually into the Playlist, which could take a while going back and forth.

1. There are 3 defaulted playlists ONLY, you can save as many songs as possible. If you wish to sort music files, you can reach it by putting them in different folders.
2. Please check whether the certain tracks cannot be played are in these formats below: MP3, AAC, APE, FLAC, WMA, WAV, if not, they are not acceptable.
3. You can move or drag or copy music files from the computer to the playlists in bulk, no need to load the songs individually.

7. The artist and album classification is wrong, what a mess!

The artist and album classification is based on the ID3 information carried by the music. If there is no ID3 info of the music, the music player cannot distinguish the music classification in the correct way.

You can view the ID3 info of the music by viewing the attributes details through a computer or other device.

8. Music files are not in proper order.

Here is a video to explain the sorting rules of music files and the folders, please check:

<https://www.youtube.com/watch?v=faNA1hee0dc>

If you want to sort the folders alphabetically, please check this video: <https://www.youtube.com/watch?v=-ZkH0N-57Ks>

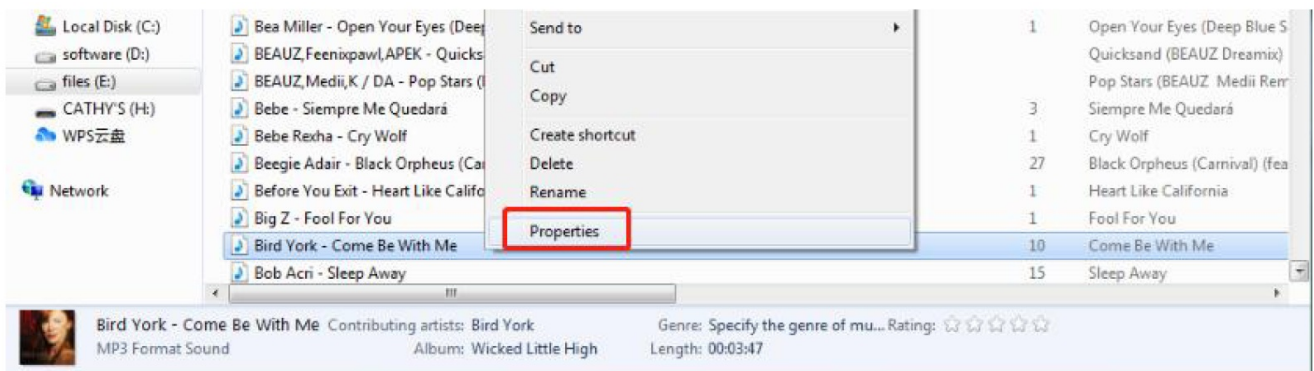
9. The music name is incorrect, cannot find the copied music and the title of the song displayed incompletely.

The mp3 player display the title of the music file according to the ID3 info.

Here we listed 2 methods, please follow the steps to check the ID3 info is correct or not:

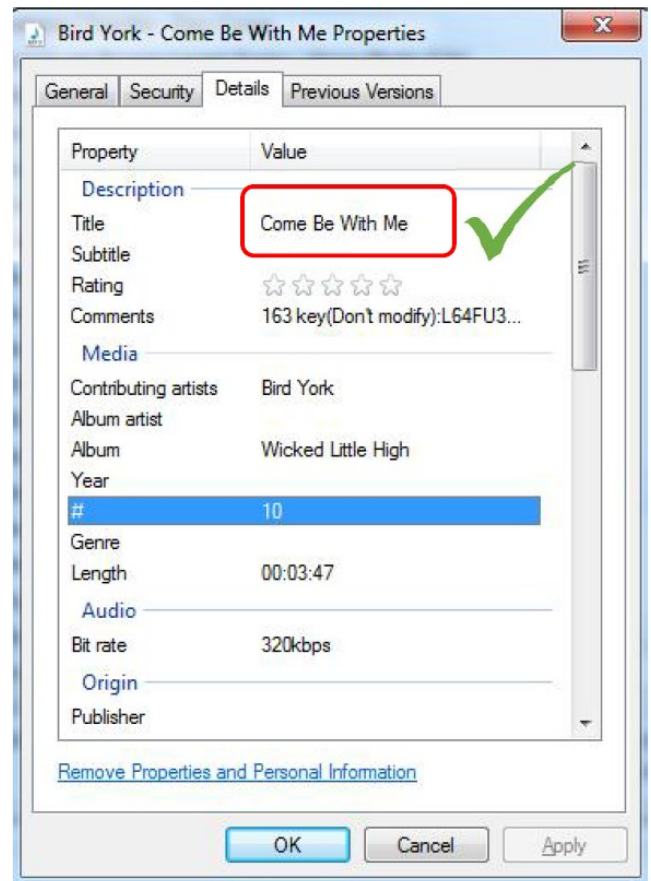
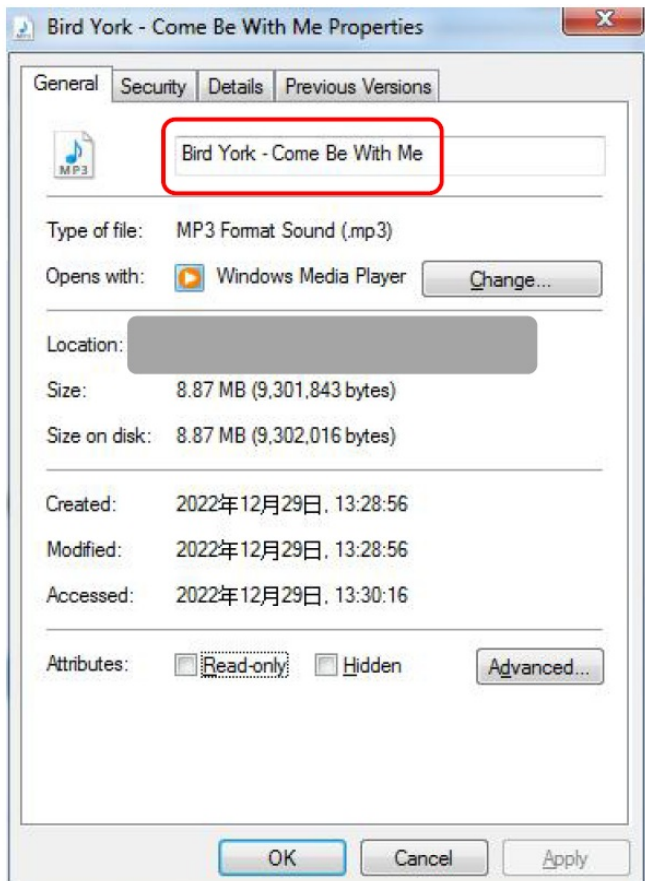
Method 1

1. Select the music file and click the left mouse button, select the last option: Properties



2. Check the General and the Details, and you will find the difference.

3. The mp3 player display the Title shown in the Details

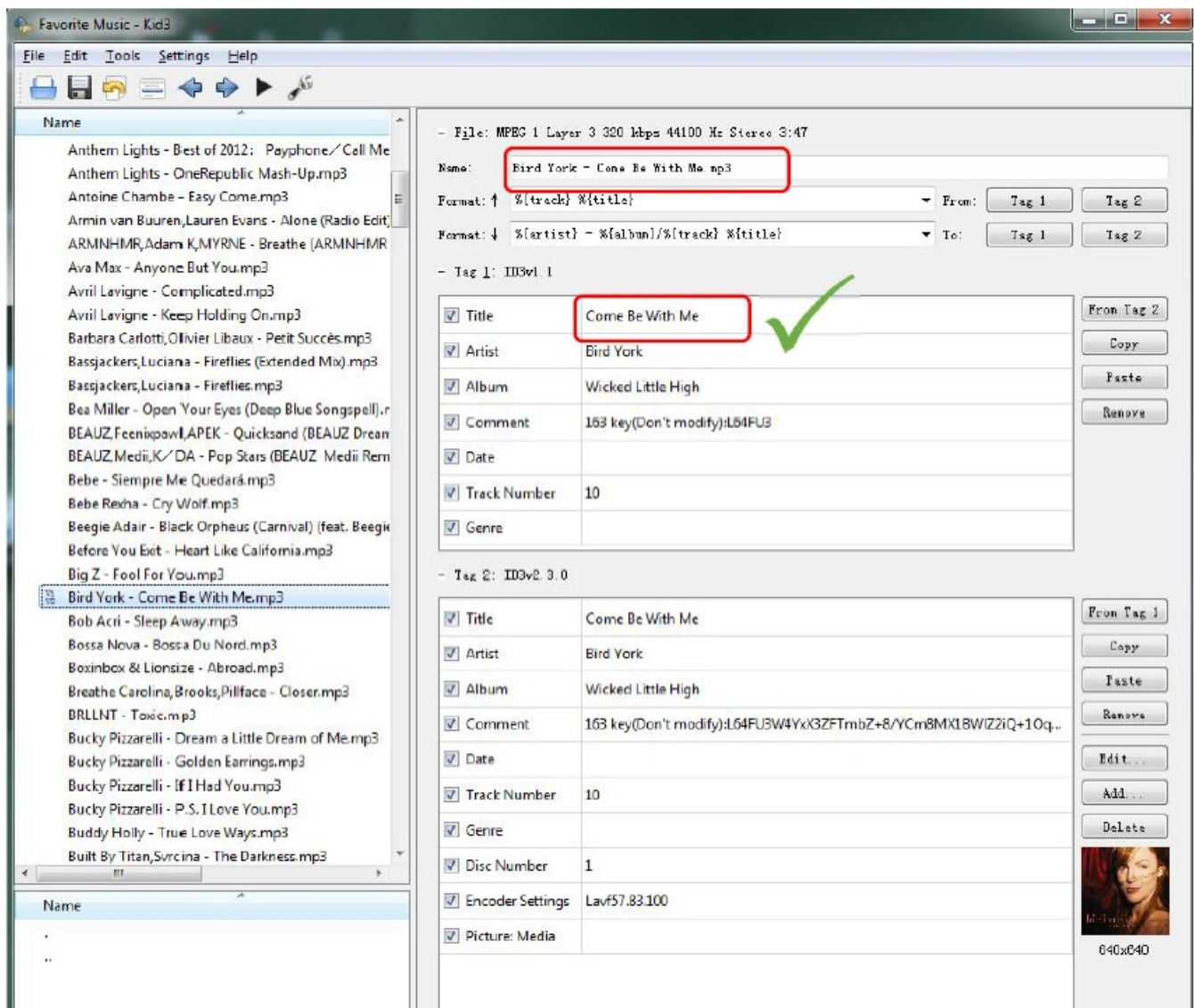


Method 2

Use tools such as Kid3, MusicBrainz Picard, Mp3 tag to check the tags of the music file.

Take Kid3 as an example:

The Name and the Title of the music file is different, while the mp3 player display the Title, not the Name.



In general, these tools allow you to view and edit ID3 tags of the music files.

Download Links

Kid3: <https://kid3.kde.org/#download>

MusicBrainz: <https://picard.musicbrainz.org/>

MP3tag: <https://www.mp3tag.de/en/download.html>

It shows shorter playback time than the actual.

Many downloaded songs have been converted, changed, compressed or edited, so the displayed info might be wrong.

You can correct it in this way:

Check the Attribute of the song and click the Details and correct the playback time.

Some music files cannot be played or it just freezes.

There are certain specific lossless formats that require a better HIFI player to play. As the player's bit rate and

sample rate can't meet the standard of those lossless music, some music tracks may directly stuck or the music player shut off to restart.

The computer cannot recognize the music player.

There are many possibilities for the computer not recognizing the machine, and we need to troubleshoot them one by one.

If you use Windows 10 / 8 / 7, please check this video to solve the problem. <https://www.youtube.com/watch?v=vvPle-ZHuK0>

If the problem is solved, that's great!

If not, it is proper that the machine is broken, please contact us promptly to return or exchange the goods, thank you.

13. Even if the video is the avi format, it cannot play on this mp3 player.

Videos should be converted before playing on this device, please use this video converter to process the videos at first:

Download the video converter here:

https://drive.google.com/drive/folders/1c4Cu3VTIKlwDw84a4s8Y5SERiJn8v4HE?usp=share_link

14. How do I get the latest firmware?

You can always get the latest firmware from the official website of MECHEN: <https://mechen.com.cn/gjsj>

Or, please check here and download the firmware (The latest firmware, firmware upgrade tool and upgrade tutorials are included) : https://drive.google.com/drive/folders/1V3vVofRqWPWob71-1-ESMtdbOc9LcQS1?usp=share_link

If you have any suggestions for the product that we can solve by firmware, you can also contact us

15. Devices will not pair to phone or laptop by Bluetooth.

No, the music player do not pair with mobile phone or laptop by Bluetooth.

16. Does not connect with smartphones. Would have to purchase a cable for in line recording to work.

The MP3 Player doesn't connect with smartphones by Bluetooth, there is a line-in cable included, there is no need to purchase one.

17. My Bluetooth buds are 5.0 will not work with this MP3 player as described.

Bluetooth depends on both hardware and software to work properly. So if your devices can't speak a common Bluetooth language, they won't be able to connect.

Please kindly tell me more details about your Bluetooth buds or please email the video to mechenservice@hotmail.com, so we can find out the problem why.

18. The Bluetooth disconnects every minute.

1. Please make sure the Bluetooth earbuds didn't run out of power.
2. The source of interference is too strong. Bluetooth headsets operate on the 2.4g frequency, which is also used by wifi routers, cordless phones and 2.4g mice. These are all relatively strong sources of interference.
3. Bluetooth headset compatibility issues. Like some old Bluetooth headsets, when used on other brands of mobile phones, they sometimes disconnect automatically. This is a compatibility issue.
4. This music player is a one-way Bluetooth channel device, in another word, it is a transmitter. The other device must be a Bluetooth receiver, or they cannot be paired.
5. Try to disconnect the Bluetooth buds and repair, if it doesn't help, please try some other Bluetooth speaker or headphone and let me know the result.

19. Cannot watch videos after a Bluetooth connection.

Currently, the music player does not support video-watching under the Bluetooth mode. However, music and background operation work alright after a Bluetooth connection.

20. There are noises after the Bluetooth connection.

Please check if there are any short wave transmitter, or electromagnetic wave equipment nearby, if there are, please turn them off.

21. Sound come from one Bluetooth earbud ONLY.

Please change some different songs to check.

Since Bluetooth earbuds is mono, if the downloaded songs happen to be mono, only one headset have sound.

22. Can I create my own playlist or modify the name of the device's playlist?

No, new playlists cannot be created or deleted, they were defaulted, nor can you modify the names of the playlists.

If you want to organize and distinguish a batch of audio files, please create a new folder by computer, then copy and paste the target audio files into the folder.

This way, you can access the folder you created on your device just like the playlist.

23. The sound and sensitivity of the FM Radio is poor.

FM radio is an analog signal transmission, the sensitivity is determined by factors such as the environment! Some local rooftop coverage frequency is not high which lead to a poor listening experience.

Please try the FM radio in a slightly open and places with centralized radio coverage.

24. Can't use the radio in Bluetooth mode.

FM radio must be connected to a wired headset, because it requires a wired headset as an antenna.

25. The radio does not work.

FM radio must be connected to wired headphones to use.

1. Please connect wired headset
2. Please repeatedly plug and unplug the wired headset to check whether it has poor contact with the 3.5mm interface.
3. Replace with an available wired headset.
4. If still can't solve, please contact us for further assistance or replacement/refund.

26. Poor sound quality of the recorder.

The recorder is an additional function of the music player, there is no noise reduction , so it work worse than the professional voice recorder, hope you understand.

27. Do I need to connect an external microphone to use the recorder?

No need to. There is a built-in high-quality microphone.

28. Battery power consumption is very fast; battery life is short.

Video and reading runs power consumption faster, in that way, you may think the battery life is shorter than advertised.

Meanwhile, the environmental and weather temperature also have effects on the battery life.

29. The music player cannot be charged.

If the music player run out of power, it start a low power protection.

At this time, please reset the machine:

1. Plug in the charging cable
2. Press and hold the power on button for 25-30 seconds
3. Hands off the music player, it will re-activate the player power management.

30. The player won't turn on.

In most cases, the inability to turn on the machine is caused by running out of power or a defective battery. Therefore, please charge for 45-60 minutes before attempting to power on.

If it still cannot be turned on after charging, it can be determined as a battery defect, please contact us for further assistance or replacement/refund.


31. Cannot recognize the TF/microSD card. Cannot format the card.

Please make sure the memory of TF card or microSD card doesn't exceed 128GB.

Some memory cards are informal that they may meet problems such as cannot be formatted, slow speed in reading or writing.

Try some other memory card to check if the problem remains.

Documents / Resources

 <p>USER GUIDANCE MECHEN M3</p>	<p>MECHEN 32GB Player with Bluetooth [pdf] User Guide 32GB Player with Bluetooth, 32GB, Player with Bluetooth, Bluetooth</p>
---	--

References

- [Kid3 - Audio Tagger](#)
- [firmware upgrade](#)
- [MusicBrainz Picard](#)
- [User Manual](#)