

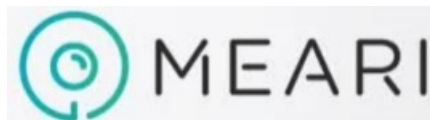


Meari MINI8 IP wifi CAMERA User Guide

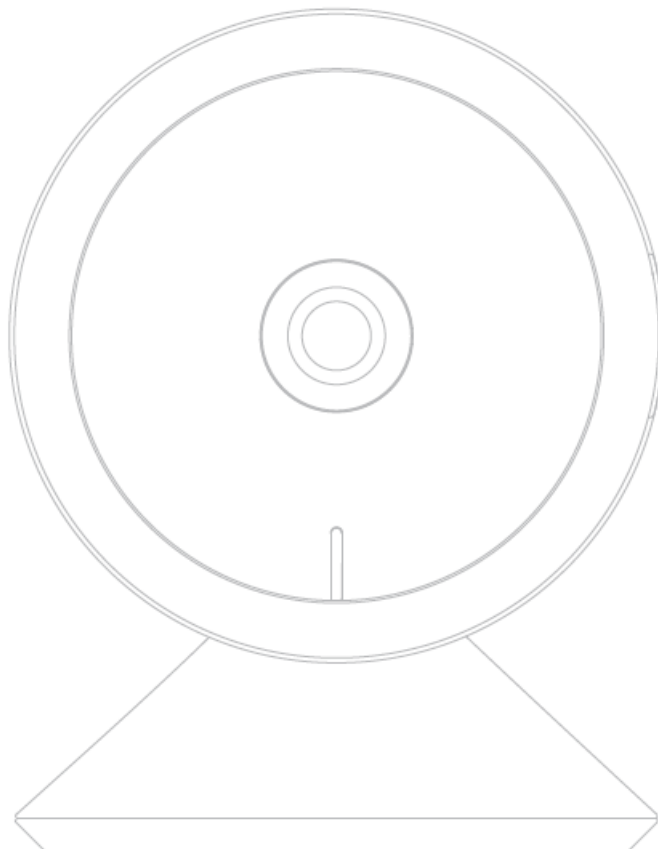
[Home](#) » [MEARI](#) » Meari MINI8 IP wifi CAMERA User Guide 

Contents

- [1 Meari MINI8 IP wifi CAMERA](#)
- [2 What's in the box](#)
- [3 Description](#)
- [4 Install](#)
- [5 Connect](#)
- [6 Registration process](#)
- [7 QR Code Configuration](#)
- [8 FAQ](#)
- [9 Functions](#)
- [10 FCC Statement](#)
- [11 Documents / Resources](#)
- [12 Related Posts](#)

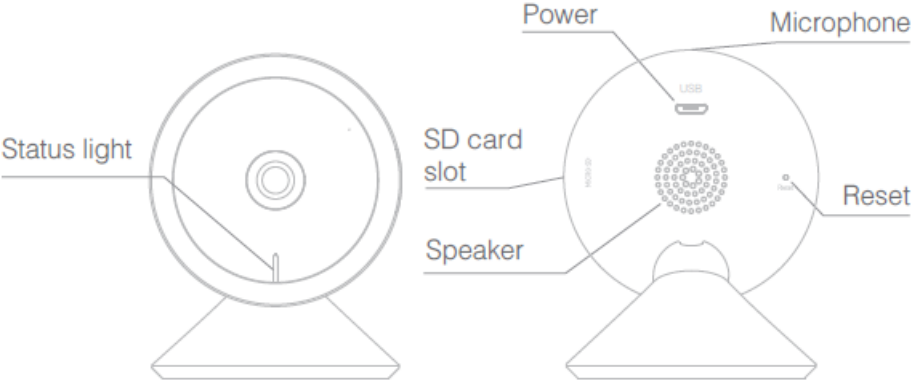
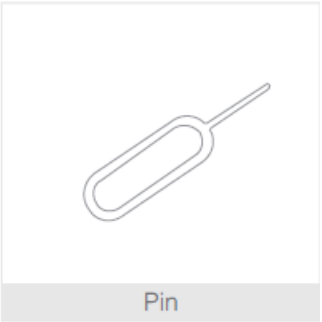
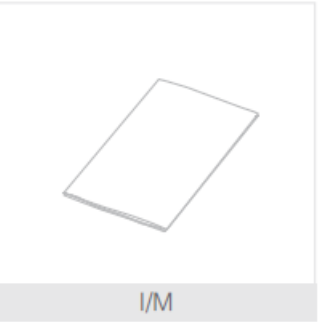
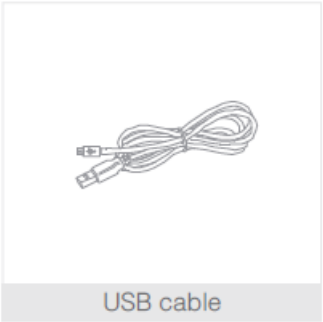
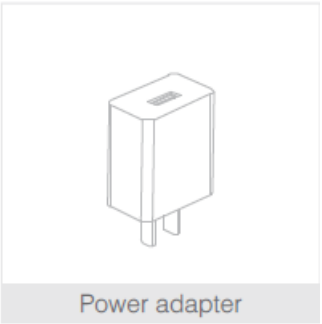


Meari MINI8 IP wifi CAMERA



What's in the box

Please consult this checklist for all parts

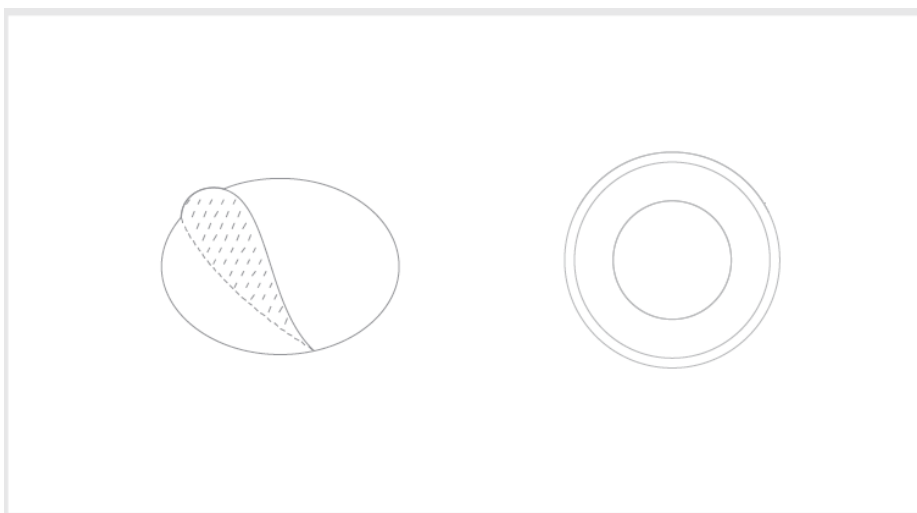


Description

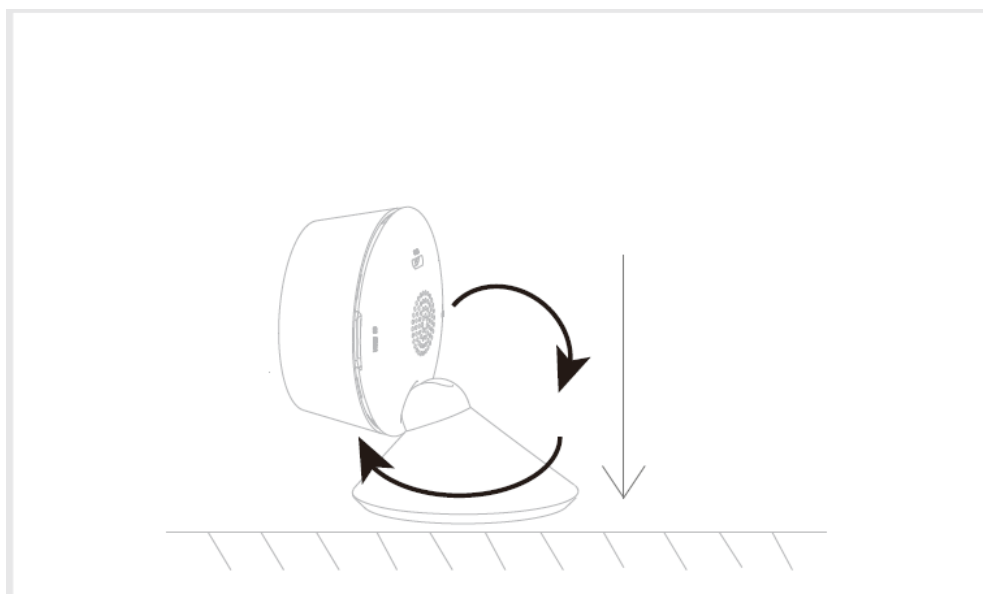
Power	DC5V \pm 10%
Status light	<ul style="list-style-type: none">• Red light solid on: the camera network is abnormal• Blinking red light: awaiting WiFi connection (faster blinking)• Blue light solid on: camera running correctly• Blinking blue light: currently connecting (faster blinking)
Microphone	Captures sound for your video
SD card slot	Supports local SD Card storage (Max.128G)
Reset	Press and hold for 5 seconds with pin to reset the camera (if you have modified settings, they will return to factory defaults)

Install

1. Stick the adhesive tape in the middle of camera's bottom



2. Put the camera on the clean plane



Connect

Download

Smart Life is available for both iOS and Android OS. Search the name Smart Lite in App Store or Android Market, or scan upper QR-Code to download the App.

• Support



iOS



Android



Download App(iOS&android)

Set up router

The device only supports a 2.4GHZ frequency band router, and does not support bGHz frequency band router, please set the relevant parameters of the router before WiFi configuration, Wii passwords do not include special characters Such as-@#S &). When the device is configured in WiFi, the mobile phone and device are as close as to the router, which can speed up the configuration of the device.

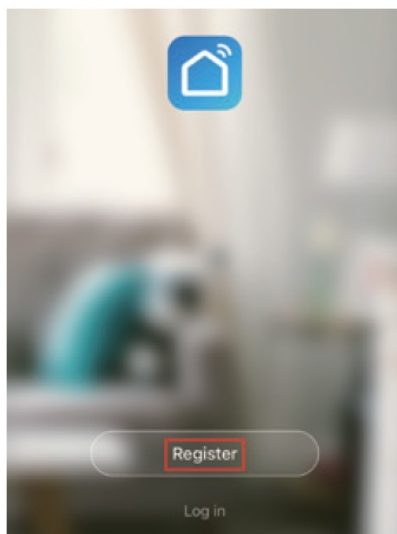


Please keep network available



Registration process

Step 1 Open the Smart Life App, click 'Register, read the "Privacy Policy" and click "Agree



Update date: 2018.4
Come into force date: 2018.5

So you have purchased our Smart LifeSmart device hardware and are starting to use the Smart LifeSmart device software and all its functionalities! Any information you share with us (e.g. for creating a Smart Life Account) will help us to provide you with services related to Smart LifeSmart device and to improve them to make them even better. We explain here our ways of collecting and using information, and how we protect your privacy. In this privacy policy, "personal data" means information that can be used to identify an individual, either from that information alone, or from that information and other information we have access to about that individual. We collect both personal and non-personal data to enable and facilitate the best user experience possible

What information is collected and how do we use it?

Disagree

Agree

Step 2 input a legal and valid Mobile number or Email address and click Continue". Input the Verification Code, then log in the app.

Register

Canada +1



Mobile number/Email

Continue



I agree with [Service Agreement](#) and [Privacy Policy](#)

Verification Code

Verification code has been sent to: admin@gmail.com,
Resend (56s)

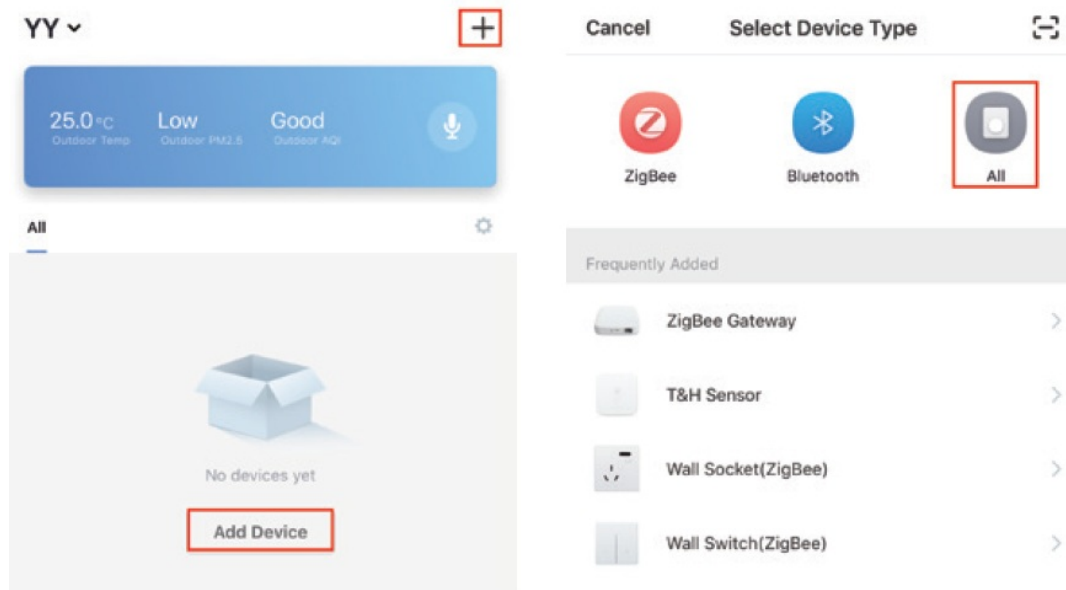
QR Code Configuration

Getting started

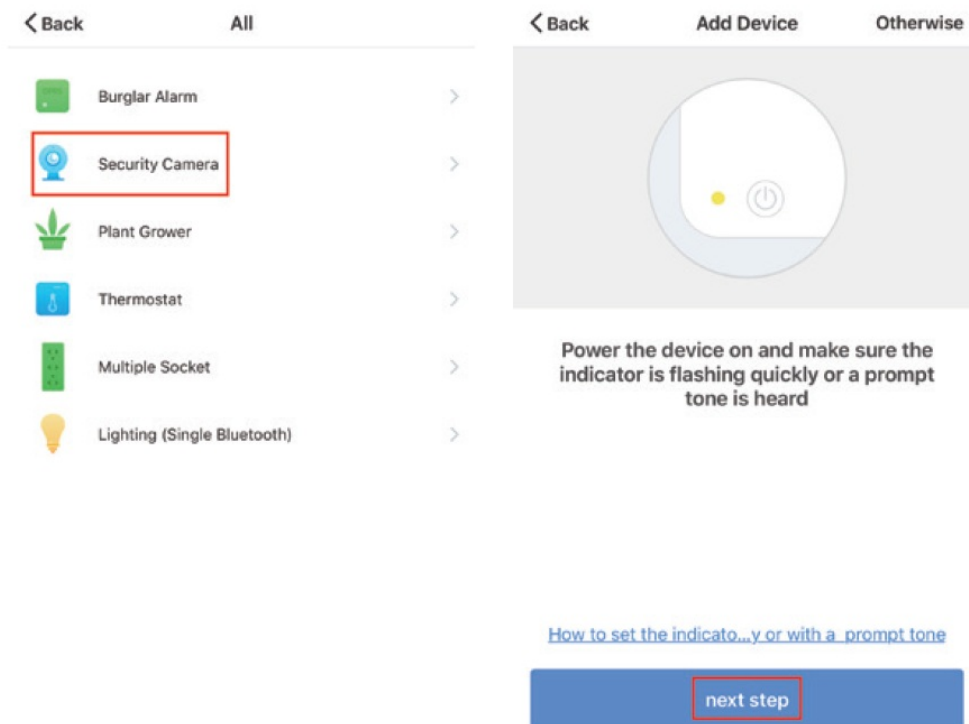
1. Please follow the instructions and make sure the passwords are input Correctly.
2. One device can only be added with one App account, if the device has been added with another account already, then it can't be added to any other account again.
3. The device will be unbound from the previous account after being deleted from App. Further,the device will be reset automatically once from blue light to red light.

Process

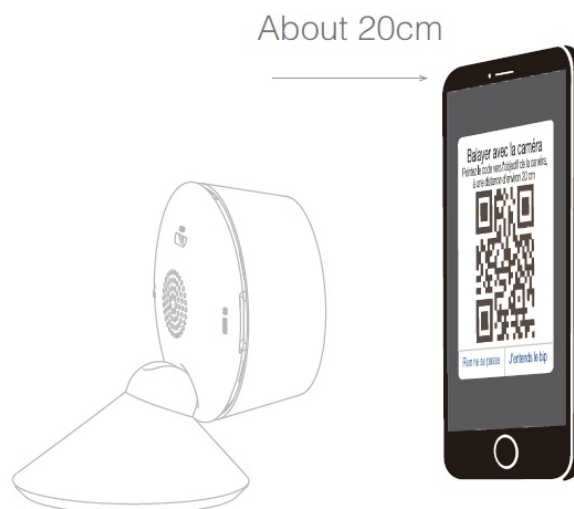
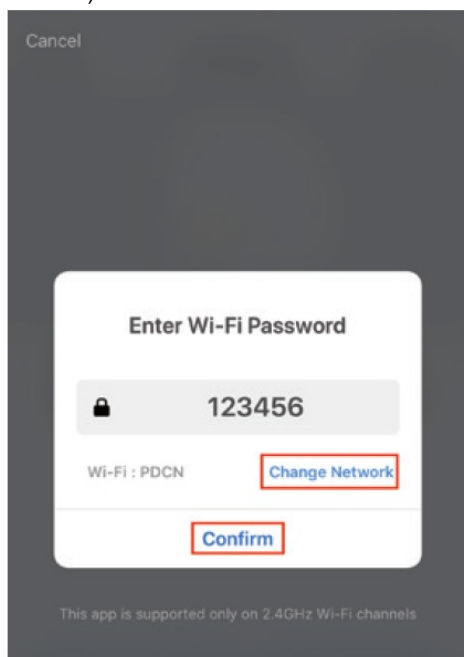
Step 1 Open the Smart Life App, click "+" or "Add Device". Then select "All on the "Select Device Type" page.



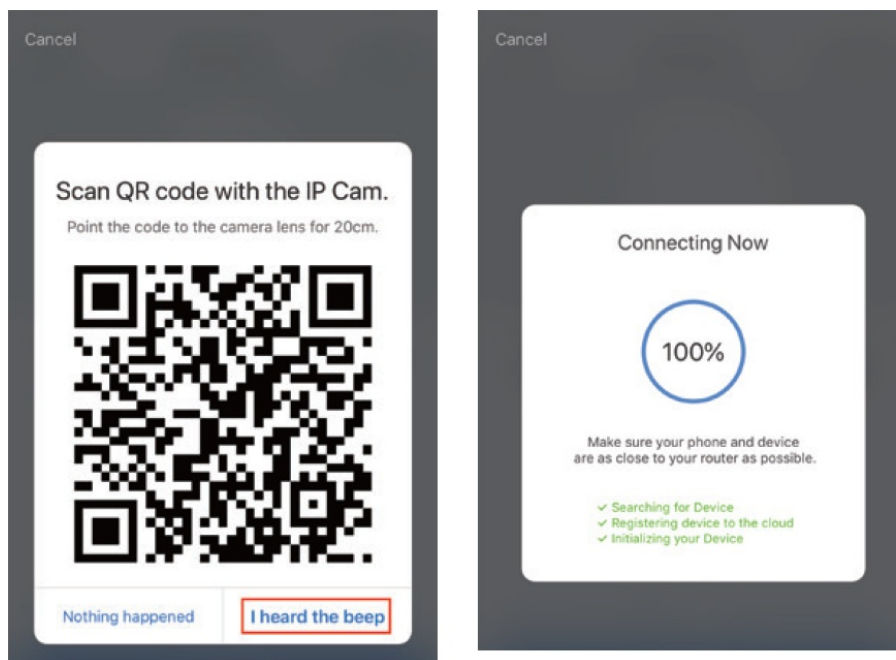
Step 2 Select "Security Camera". Power the device on and make sure the indicator is flashing quickly or a prompt tone is heard.



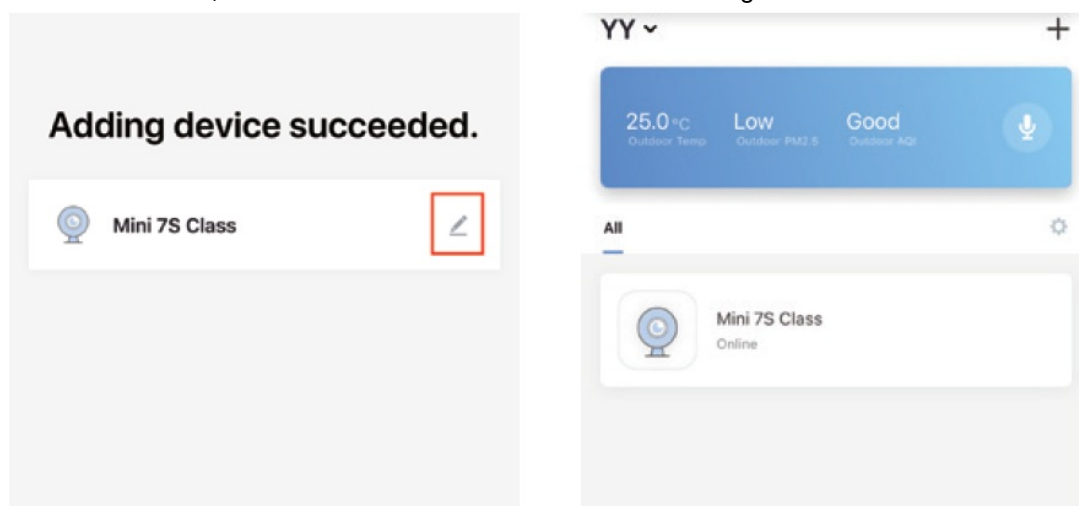
Step 3 Input WiFi passwords and click “Confirm”, scan the QR Code with a device. (You can change the network connection)



Step 4 Click “I heard the beep” when the device comes out “dong dong dong”. And you can complete the configuration about 30s.



Step 5 The device is added, and the device nickname can also be changed in this interface.



FAQ

Q: The device cannot be previewed properly

A: Check whether the network is normal, you can place the camera close to the router, and if not, it is recommended to reset the device and add it again.

Q: Why is it still in the list of devices after resetting?

A: The reset device only resets the network configuration of the camera, but cannot change the configuration on the App, remove the camera, and must be deleted by the App.

Q: How to Cut the camera network to another router?

A: First remove and reset the device on the App and then configure the device again by the App.

Q: Why doesn't the device identify the SD card?

A: It is recommended to plug in an SD card after a power cut. Confirm whether the SD card is normally available and the format is FAT32. And the card can be identified when the internet environment is not good.

Q: Why do I can get notifications with my cell phone App?

A: Please confirm that the App has been running on the phone, and the relevant reminder function has been opened; Message notification and authority Confirmation in the mobile phone system have been opened.

Functions

Video flip

Flip your video stream vertically anytime for maximum flexibility

Motion detection

Motion sensors will notify you when movement is detected.

Record

Record every moment using high-capacity SD card storage.

Day & Night

Powerful night vision means no interruptions, even in complete darkness.



Daytime



Night

FCC Statement

This equipment has been tested and found to comply with the limits for a Class B digital device, pursuant to part 15 of the FCC Rules. These limits are designed to provide reasonable protection against harmful interference in a residential installation. This equipment generates, uses and can radiate radio frequency energy and, if not installed and used in accordance with the instructions, may cause harmful interference to radio communications. However, there is no guarantee that interference will not occur in a particular installation. If this equipment does cause harmful interference to radio or television reception, which can be determined by turning the equipment off and on, the user is encouraged to try to correct the interference by one or more of the following measures

- Reorient or relocate the receiving antenna.
- Increase the separation between the equipment and receiver.
- Connect the equipment into an outlet on a circuit different from that to which the receiver is connected.
- Consult the dealer or an experienced radio/TV technician for help.


FCC Radiation Exposure Statement

This device complies with FCC radiation exposure limits set forth for an uncontrolled environment and it also complies with Part 15 of the FCC RF Rules. This equipment must be installed and operated in accordance with provided instructions and the antenna(s) used for this transmitter must be installed to provide a separation distance of at least 20 cm from all persons and must not be co-located or operating in conjunction with any other antenna or transmitter. End-users and installers must be provided with antenna installation instructions and consider removing the no collocation statement This device complies with Part 15 of the FCC Rules. Operation is subject to the following two conditions:

- this device may not cause harmful interference, and
- this device must accept any interference received, including interference that may cause undesired operation.

Caution!

Any changes or modifications not expressly approved by the party responsible for compliance could void the user's authority to operate the equipment.

	<p>Meari MINI8 IP wifi CAMERA [pdf] User Guide MINI8 IP wifi CAMERA, IP wifi CAMERA, wifi CAMERA</p>
---	--