



# MEARI IView 104W/T Network Video Recorder WiFi Kit User Guide

[Home](#) » [MEARI](#) » MEARI IView 104W/T Network Video Recorder WiFi Kit User Guide 

*MEARI IView 104W/T Network Video Recorder  
WiFi Kit User Guide*

# Wi-Fi KIT

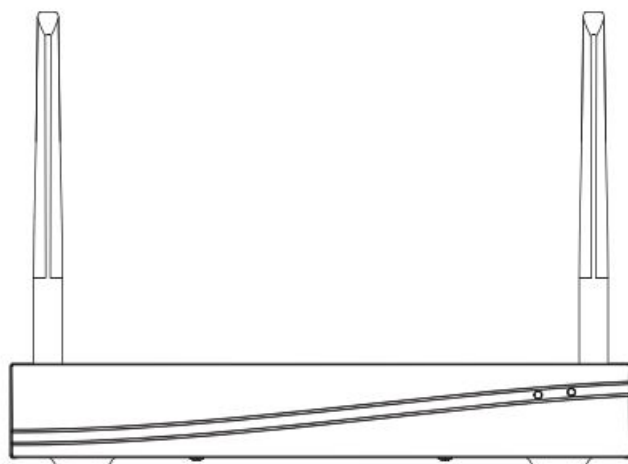
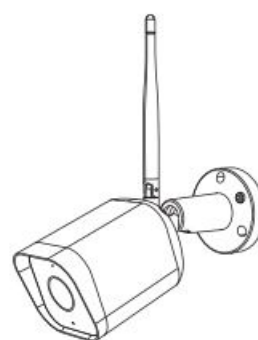
ORIGINALITY DESIGN SMART - AND BEAUTIFUL

.....



## QUICK GUIDE

### IView 104W/T

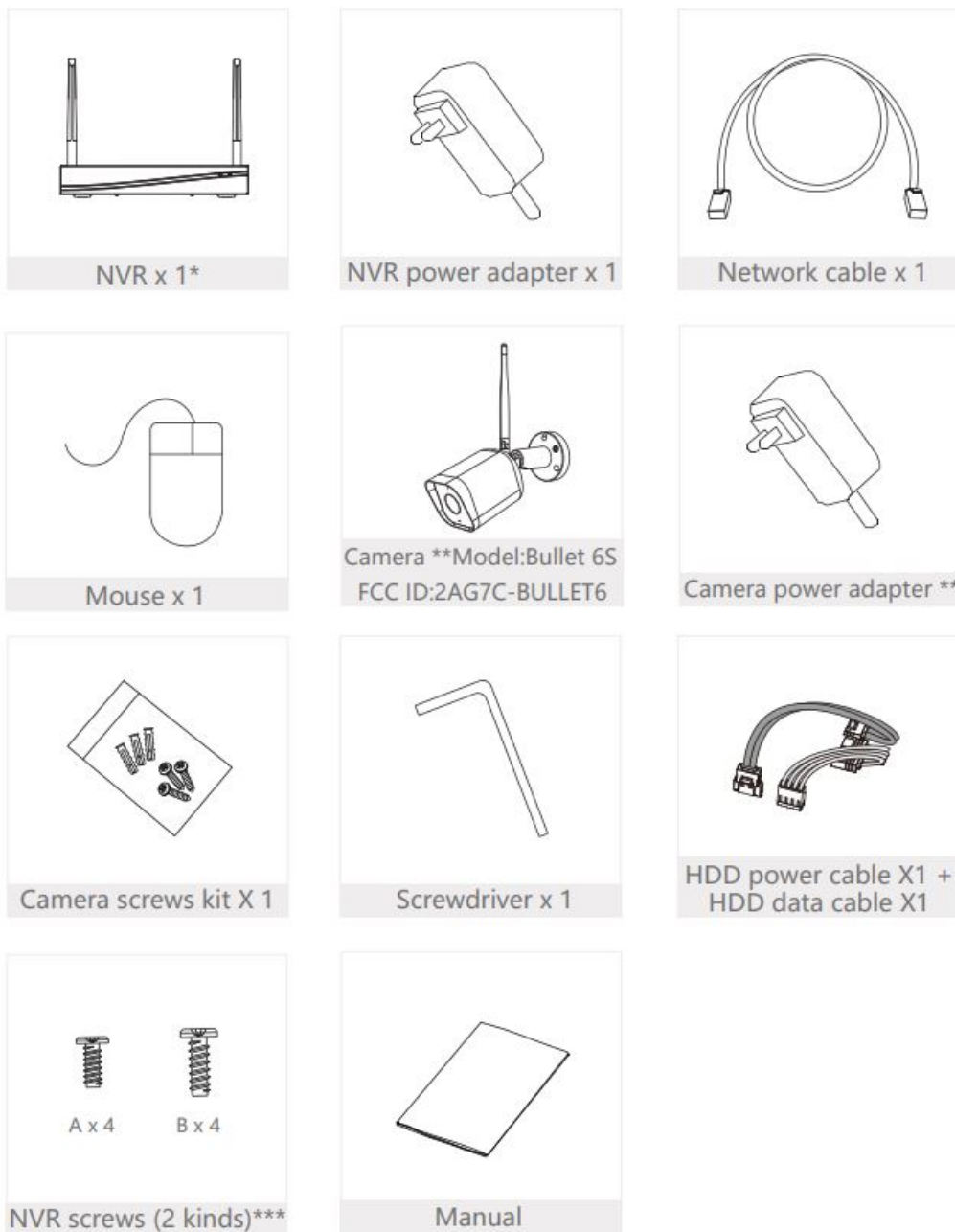


## **Contents**

- [1 What's in the box](#)
- [2 Description](#)
- [3 HDD Installation](#)
- [4 Connection of Screen](#)
  - [4.1 Connect NVR to screen](#)
- [5 Connection of App](#)
  - [5.1 Download](#)
  - [5.2 Set up router](#)
  - [5.3 Preview Function](#)
  - [5.4 Live View](#)
  - [5.5 Open live view](#)
  - [5.6 Navigation bar of selected camera](#)
  - [5.7 Navigation bar of live view](#)
- [6 Playback Function](#)
  - [6.1 Playback](#)
- [7 Setting Function](#)
  - [7.1 General setting &Time setting](#)
  - [7.2 Network setting](#)
  - [7.3 Storage setting](#)
  - [7.4 Camera adding](#)
  - [7.5 Camera setting](#)
  - [7.6 User setting](#)
  - [7.7 Default setting](#)
  - [7.8 System setting](#)
- [8 Connection of App – Registration](#)
  - [8.1 Registration process](#)
- [9 Connection of App](#)
- [10 Documents / Resources](#)
- [11 Related Posts](#)

## **What's in the box**

Please consult this checklist for all parts.

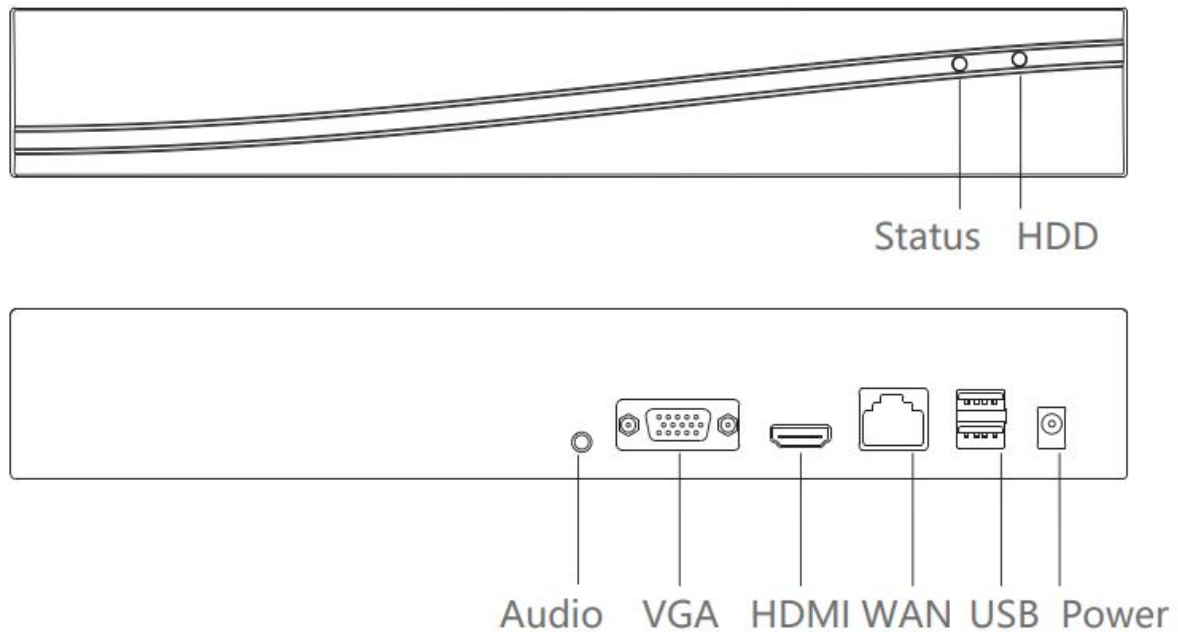


\* NVR means network video

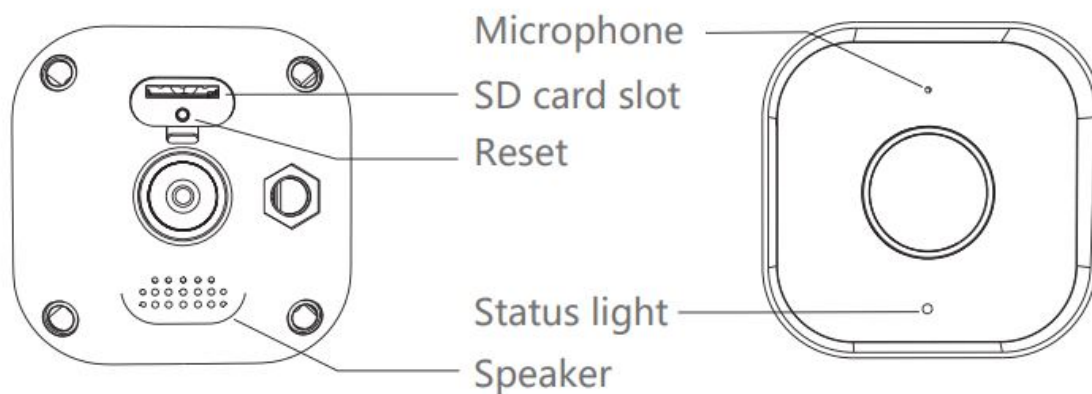
\*\* NVR can connect to 4 cameras or 8 cameras according to different kit type.  
Each camera has one power adapter.

\*\*\* NVR screws: A for 2.5 inch HDD, B for 3.5 inch HDD.

## Description



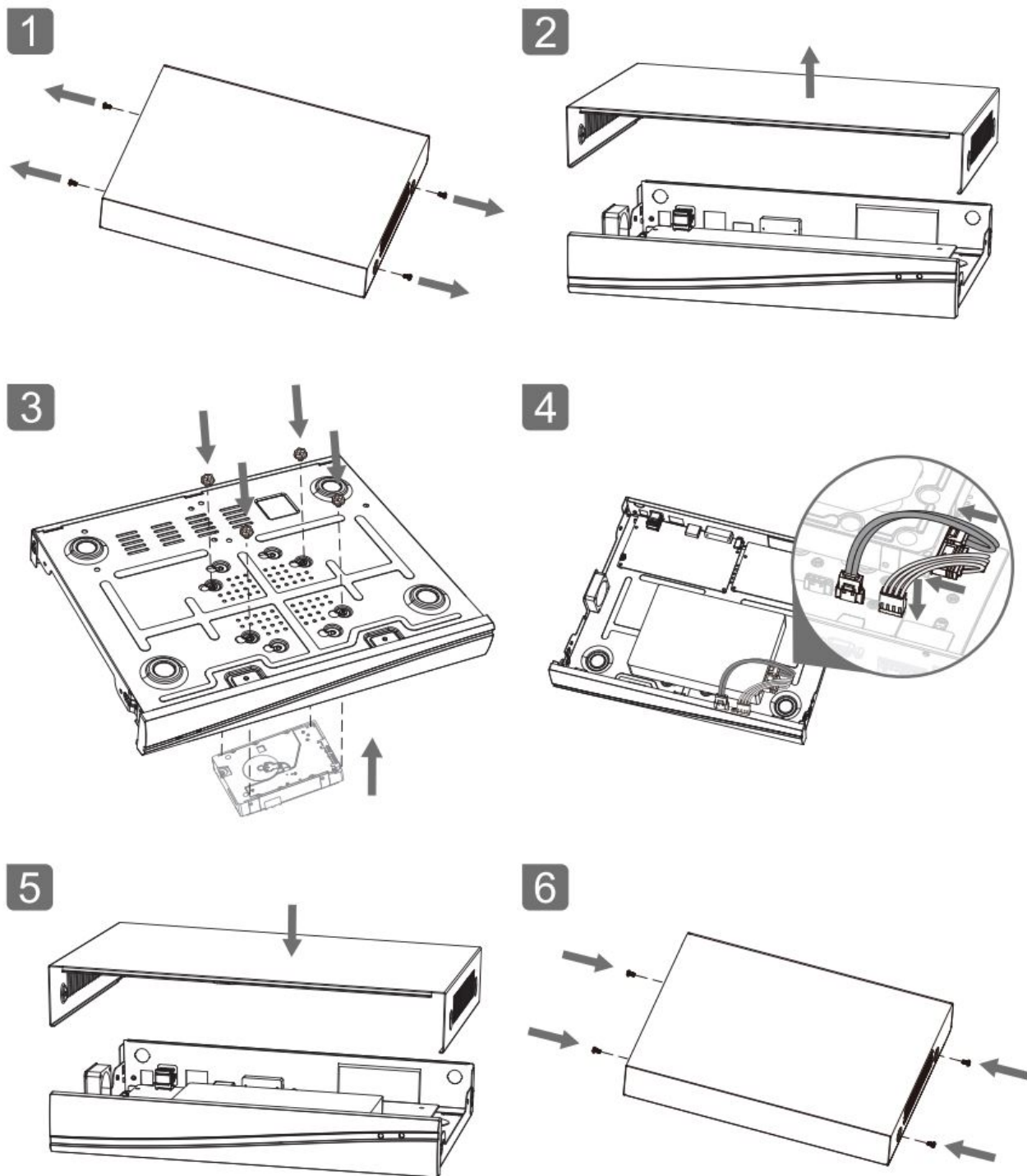
Status light	<ul style="list-style-type: none"> <li>• Solid red light on: camera is starting up</li> <li>• Solid blue light on: camera is working correctly</li> </ul>
HDD light	Blinking blue light: Data is being read or written
Audio	Connect to speakers or earphones to hear sound
VGA	VGA video output port
HDMI	High definition video output port
WAN	Ethernet port. Connect to the network cable
USB	Connect to mouse, USB storage device, USB burner and etc
Power	DC 12V/2A



Power	DC12V/1A
Status light	<ul style="list-style-type: none"> <li>• Blinking red light: wait for network connection (fast)</li> <li>• Solid blue light on: camera is working correctly</li> <li>• Solid red light on: network is malfunctional</li> </ul>
Microphone	Capture sound for your video
SD card slot	Support local SD Card storage (Max.128G)
Reset	Press and hold for 5 seconds to reset the camera (if you have modified settings, they will return to factory defaults)

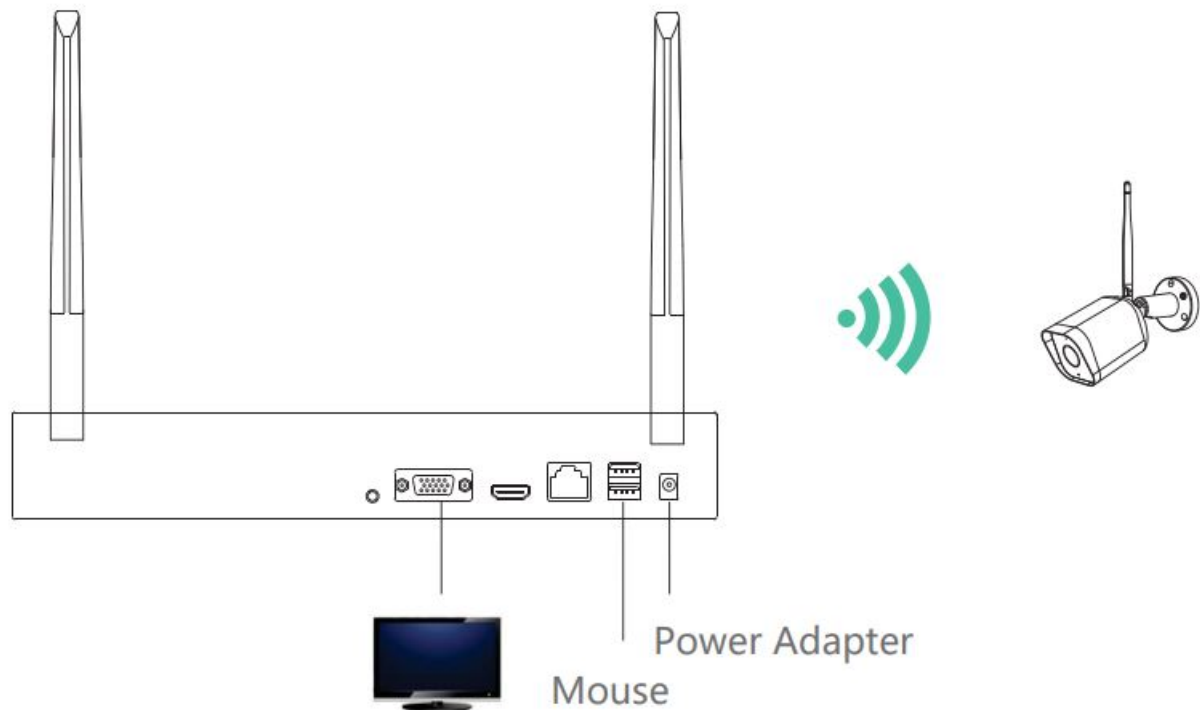
## HDD Installation





## Connection of Screen

Connect NVR to screen



1. Power on the NVR with included power
2. Connect the NVR with screen by VGA interface or HDMI
3. Connect the NVR with mouse by USB
4. Power on the camera The camera will connect to the screen automatically.

Note:

If you delete the camera from the channel and want to add it again, there are two methods:

Method 1: 1) Click **Setting > IP Camera** to enter the interface.

2) Click **Q** to search for online devices which are added before and deleted afterwards. Select the needed camera, click Add, and input user and password.

Method 2: 1) Press reset button of camera to reset.

2) Click the QR code in the upper right corner of the screen and scan the QR code with the camera.

## Connection of App

### Download

SmartLife or Tuya Smart is available for both iOS and Android OS. Search the name 'SmartLife', 'Tuya Smart' in App Store or Google Play, or scan the QR code to download the App. You can select the App according to needs.

- Support







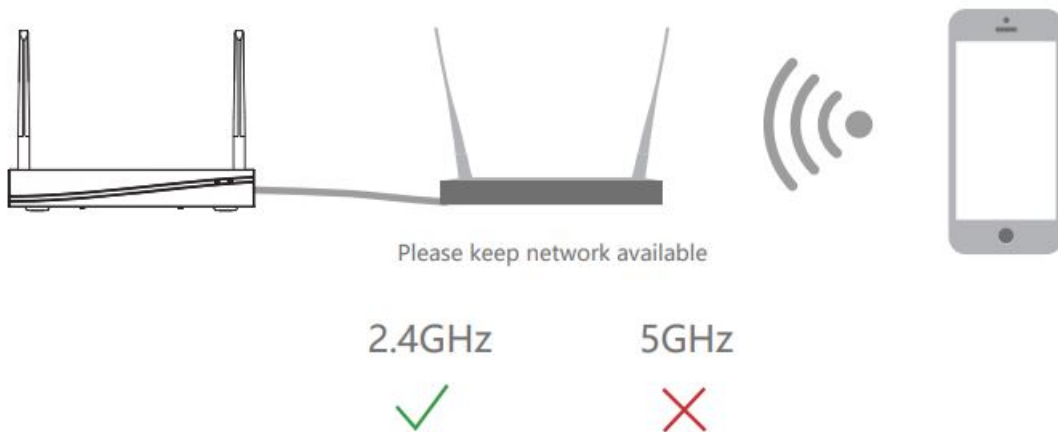
<http://e.tuya.com/smartlife>



<https://smartapp.tuya.com/tuyasmart>

### Set up router

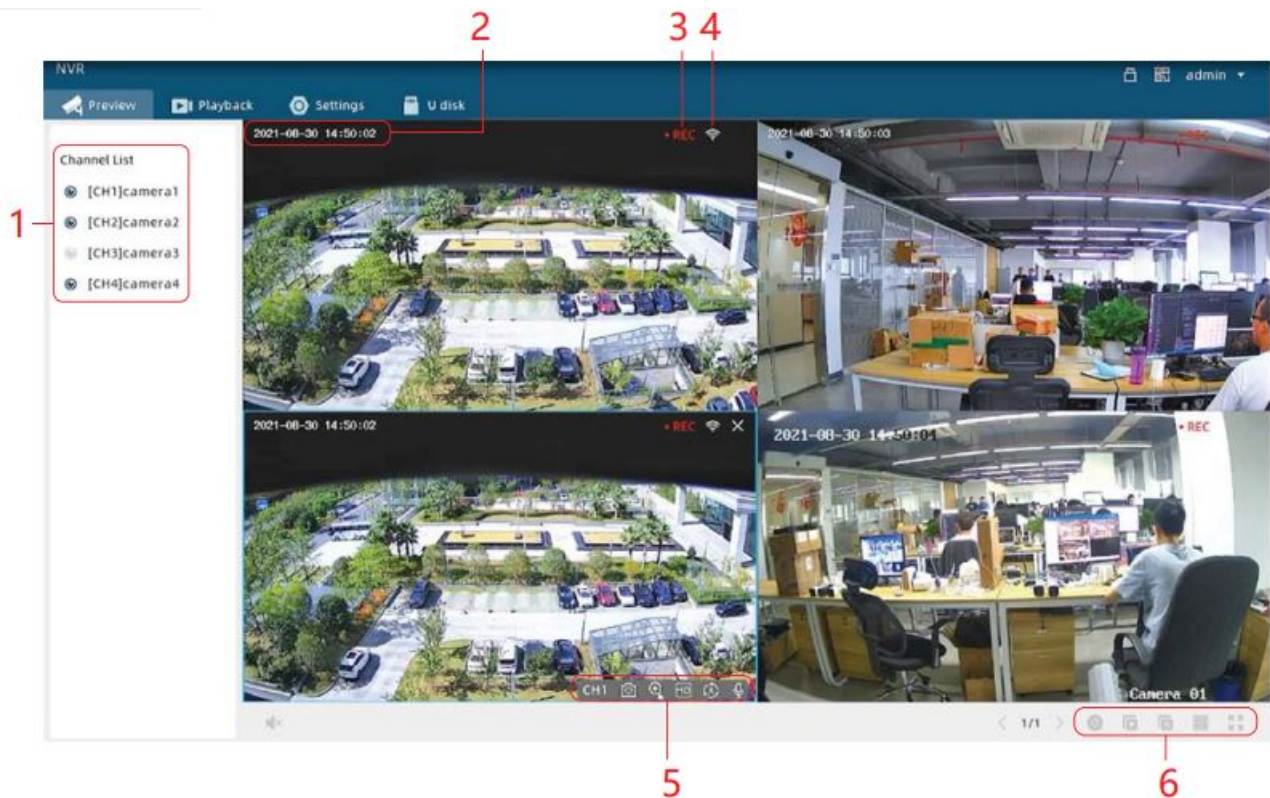
- If you want to connect NVR to App, you need to connect the NVR to router with network cable first.
- Your phone of App and NVR should be in the same network Please select suitable router before connection.
- The router supports the 4GHz Wi-Fi (doesn't support the 5GHz).



### Preview Function

- Connect NVR to screen in For more details, see page of “Connection of Screen”.
- The NVR and cameras are paired by When they are powered on, they will connect to each other automatically.

## Live View



1	Channel list of connected cameras
2	Current date and time
3	Whether to record or not
4	Wi-Fi signal strength
5	Navigation bar of selected camera
6	Navigation bar of live view

## Open live view

Method 1: Drag the camera name of channel list to the display screen.

Method 2: Select one camera of channel list, and click the **Preview** icon next to the camera name. (Click **Edit** icon to change camera name.)

## Navigation bar of selected camera



CH1	Channel number of selected camera
	Click to flip the screen
	Click to zoom in or zoom out
	Click to switch resolution between HD and SD
	Click to switch mode between Day and Night
	Microphone

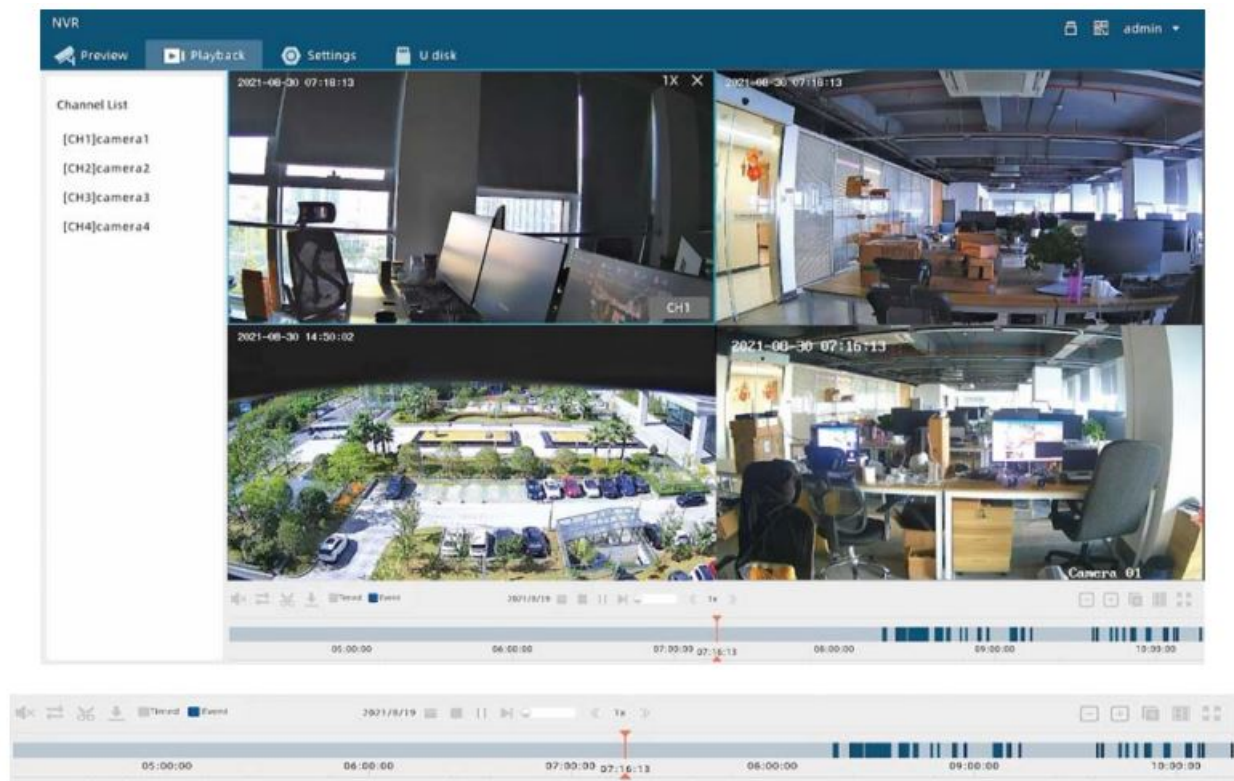
#### Navigation bar of live view



	Turn on or off voice, and adjust volume
	Click to display different camera screens
	Click to start patrol if camera supports PTZ function
	Open previews of all cameras
	Close previews of all cameras
	Select split style of camera screens
	Display the selected camera with full screen

#### Playback Function

##### Playback



Turn on or off voice, and adjust volume



Turn on synchronous playback (All screens play videos of the same time period )



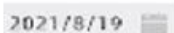
Click to clip video and drag clip box to select video length



Download the clipped videos in MP4 format (Please insert U disk first)



Icons of different recording types



Click to select date with recordings




Stop/Play playback



Adjust playing speed. Drag  to adjust speed, click  to speed up, click  to speed down



Drag to control the time bar of recordings. Click  to zoom out progress bar, and click  to zoom in progress bar



Close playbacks of all cameras



Select split style of camera screens

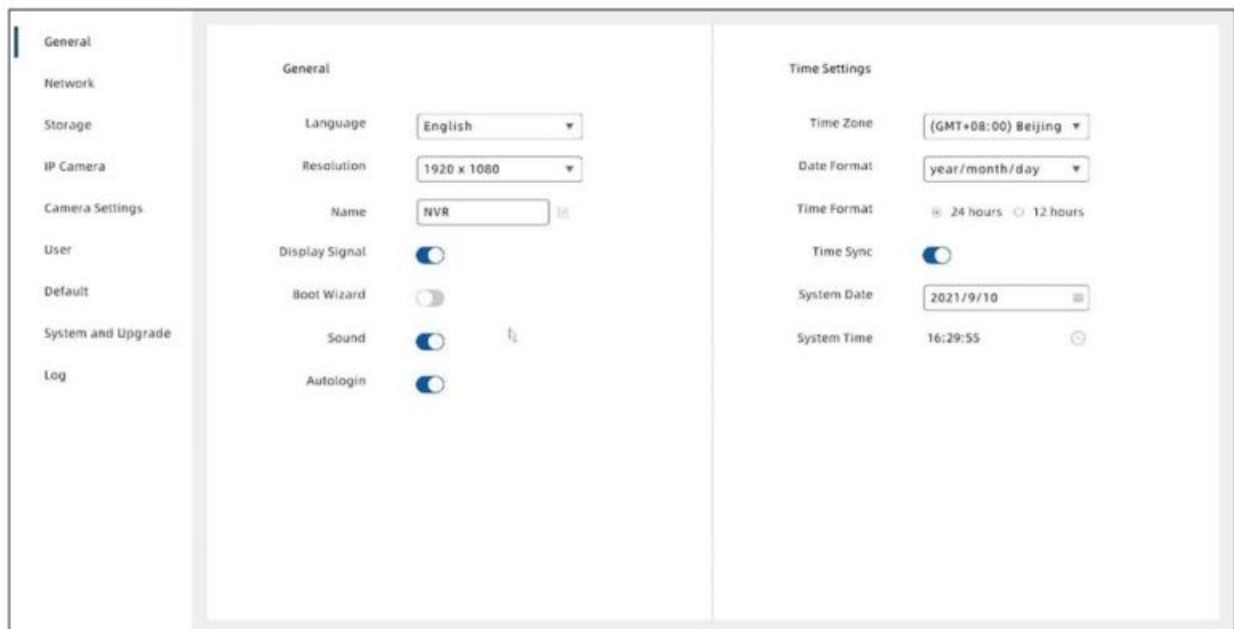


Display the selected camera with full screen

## Setting Function

### General setting &Time setting

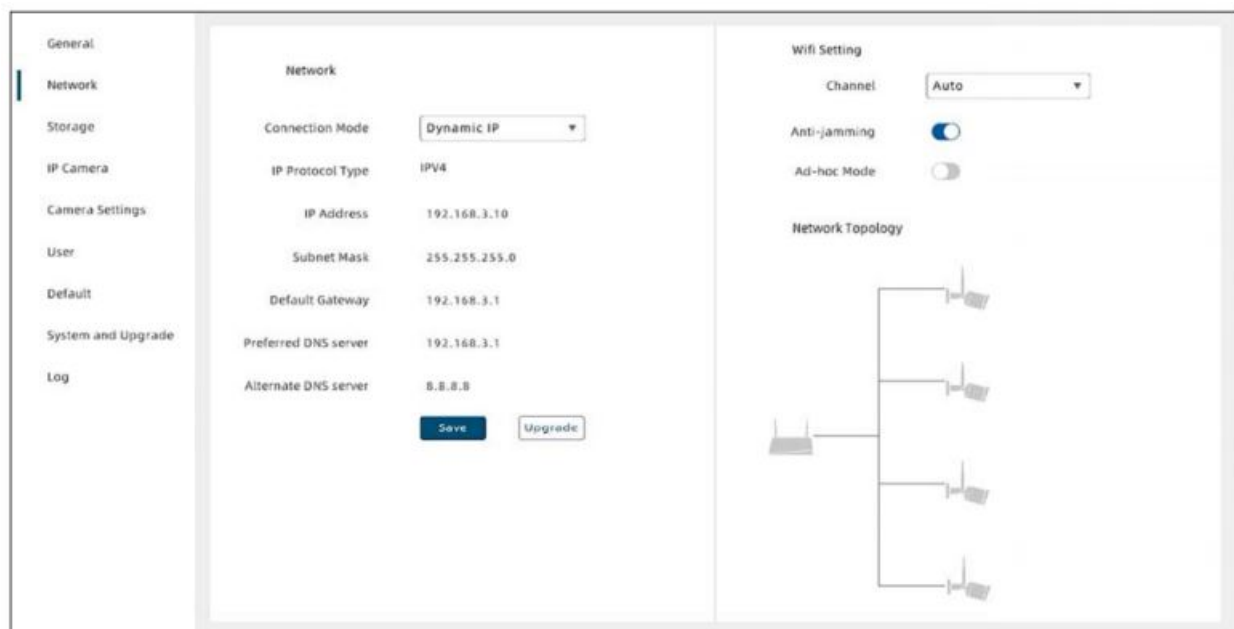




Click **Setting > General** to enter the interface.

1. **Change language:** Click the down arrow of language and select the needed
2. **Adjust resolution:** Click the down arrow of resolution and select the needed
3. **Time settings:** Click the down arrow of items to select time zone, date And you can turn on **Time Sync** function to synchronize the time and date of the time zone, or you can adjust date and time by manual.

## Network setting



Click **Setting > Network** to enter the interface.

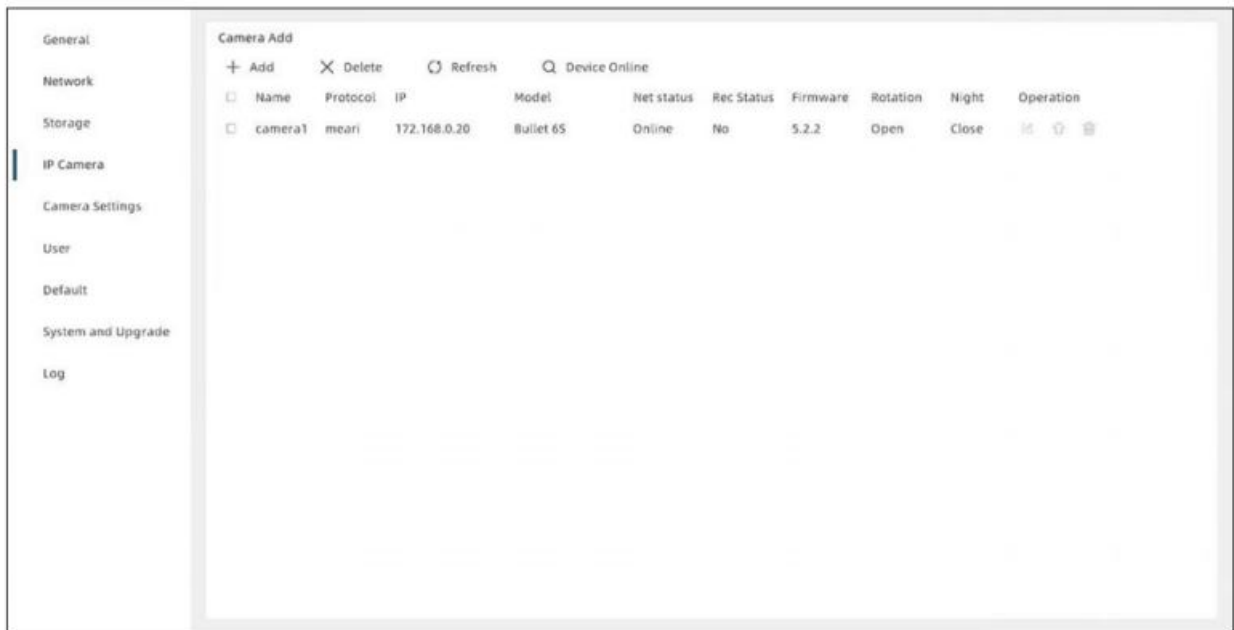
1. **Set up Network:** Select static IP or Dynamic IP according to network
2. **Set up Wi-Fi:** You can select Wi-Fi channel, turn on anti-jamming function , or turn on Ad-Hoc mode to make Wi-Fi much more fluent and steady according to network

## Storage setting





Click **Setting > Storage** to enter the interface.

1. **Record method:** You can select to turn on **Constant** or **All Day** Constant is when the HDD is full, start to overwrite the recording from the very first frame; All day is to record video throughout the day.
2. **Disk setting:** You can view the usage of HDD, or you can format it when

## Camera adding



Click **Setting > IP Camera** to enter the interface.

1. **Add camera:** You can add devices by manual, scan QR code or search for online devices on the same network
  - By manual: Click  and fill in the camera
  - Scan QR code: Click the icon on the upper right corner of the screen, scan the QR code with camera and follow the on-screen prompts. (Only support cameras that are compatible with )
  - Search for online device: Click to search for online devices on the same network segment, and the searched devices will be displayed. Click the needed camera, click Add, and input user and
2. **Modify camera:** Click to modify camera name, address, protocol, port, user name or password.
3. **Delete camera:** Select the camera, and click  or  to delete
4. **Upgrade camera:** Put the latest firmware into the USB device, and insert the USB to the NVR. Click the  icon to find the latest firmware, and follow the prompts to upgrade.

## Camera setting

Click **Setting > Camera Setting** to enter the interface.

You can set up camera functions if the connected camera support those functions. You can select the bitrate of main stream, and turn on motion detection function.

If you turned on motion detection function, you can also select sensitivity degree, set up arming time, and select

alarm type such as app push and record.

### **User setting**

Click **Setting > User** to enter the interface.  
You can add or delete users, and assign user authorities.

### **Default setting**

Click **Setting > Default** to enter the interface.  
You can set up auto reboot time, restore to default settings or restore to factory settings.

### **System setting**

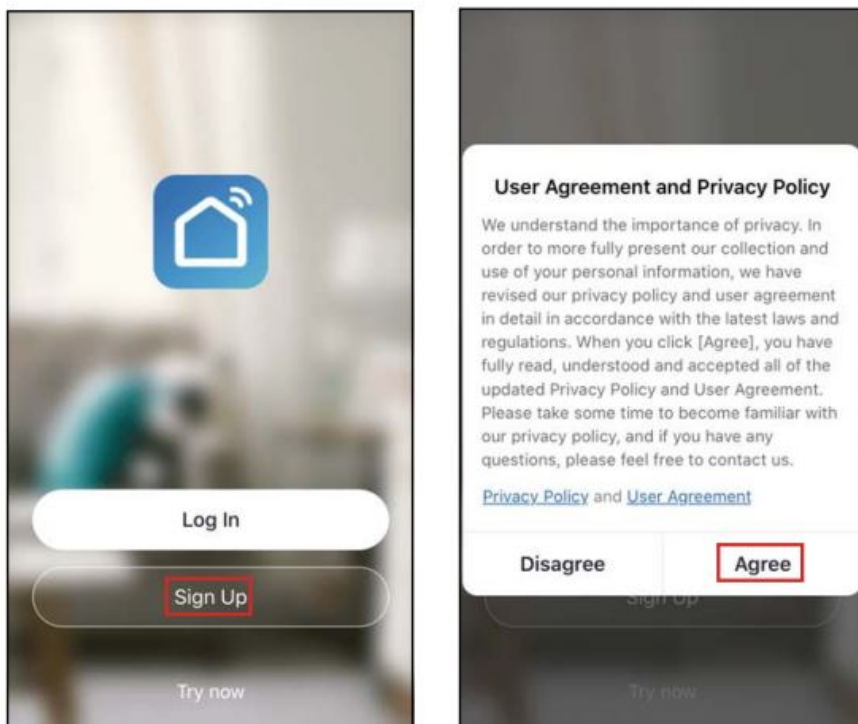
Click **Setting > System and Upgrade** to enter the interface.

1. **View system info**: You can view device
2. **Upgrade NVR**: Put the latest firmware into the USB device, and insert the USB to the NVR. Click the **Check Upgrade** to find the latest firmware, and follow the prompts to upgrade.

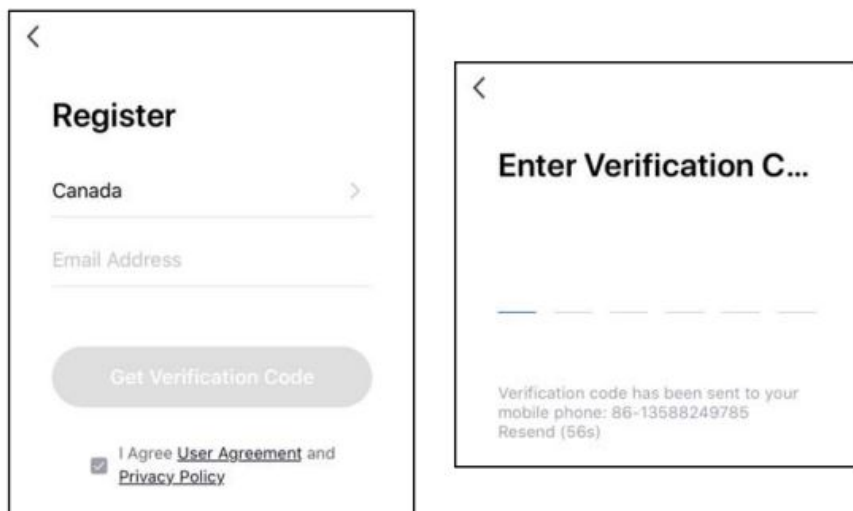
## **Connection of App – Registration**

### **Registration process**

Step 1 Open the Smart Life App, click "Sign Up", read the "User Agreement Privacy Policy" and click "Agree" .



Step 2 Input a legal and valid Mobile number or Email address and click "Get Verification Code". Input the verification code to log in.



## Connection of App

(1) Set up the parameters of the router firstly and then record the SSID and password of your Wi-Fi. Make sure the Wi-Fi is stable and fluent and then connect your smartphone to the Wi-Fi.

### Note:

- Please consider the installation position of NVR before selecting a router or a repeater which also provides Wi-Fi for your smartphone, because the NVR have to be connected to the router or the repeater by network
- NVR only supports 4GHz Wi-Fi network.

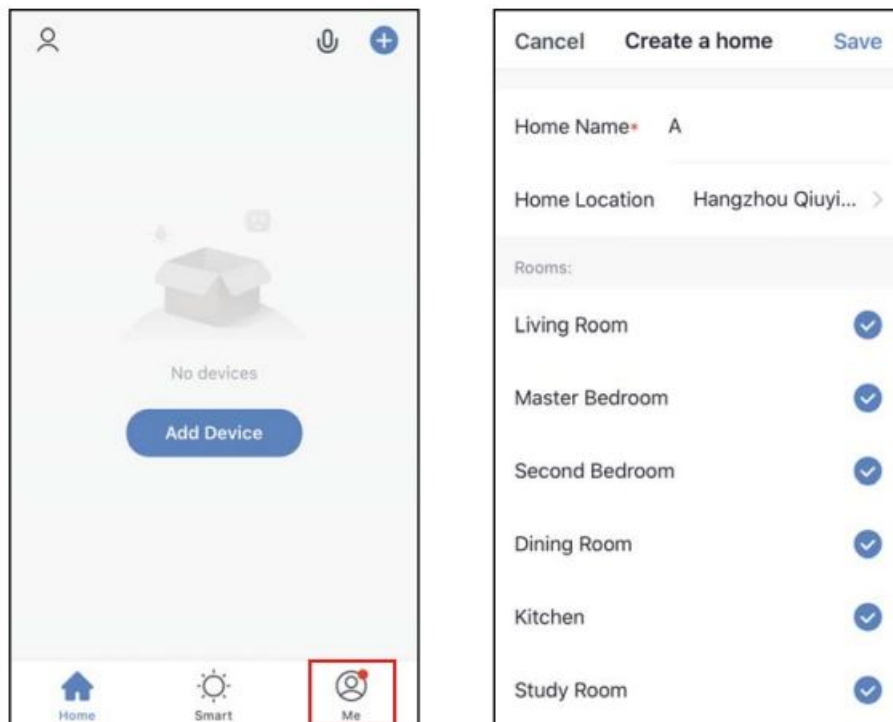


- The number of bits in the SSID and passwords of the router should not exceed 24

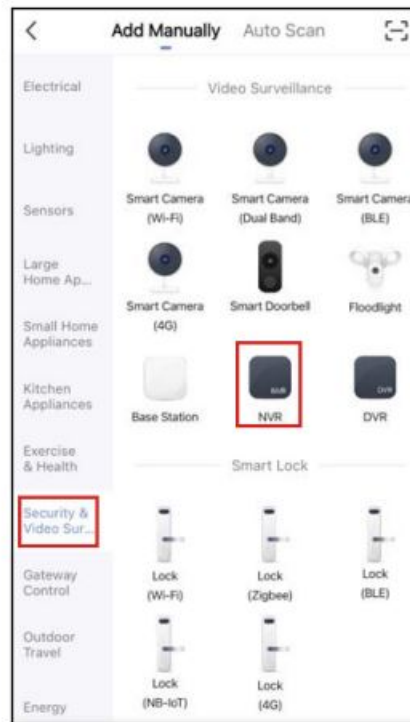
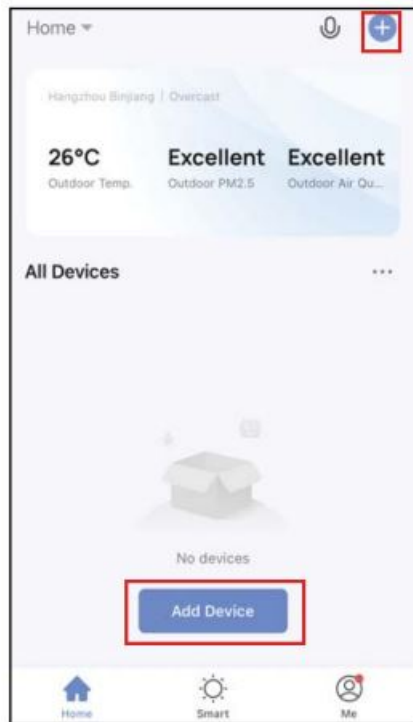
1. Take out the NVR and power
2. Take out the prepared network Connect the NVR to the router or repeater via the network cable.
3. Connect your phone to Wi-Fi.

\* Your phone of App and NVR should be in the same network segment.

**(3)** Open the Smart Life App, click “Me” >> “Home Management” >> “Create a home”, and you can customize the home name and related settings.

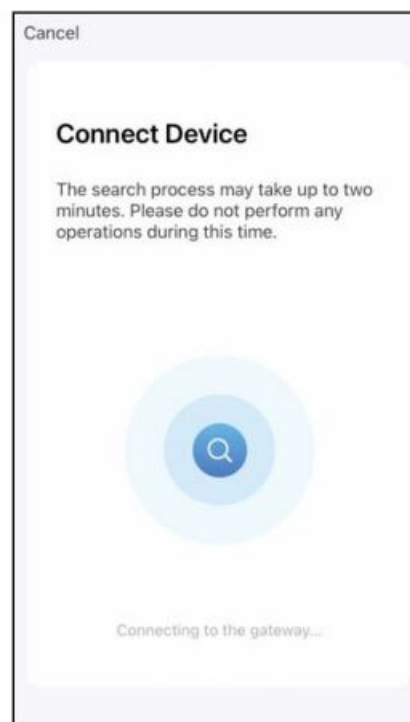
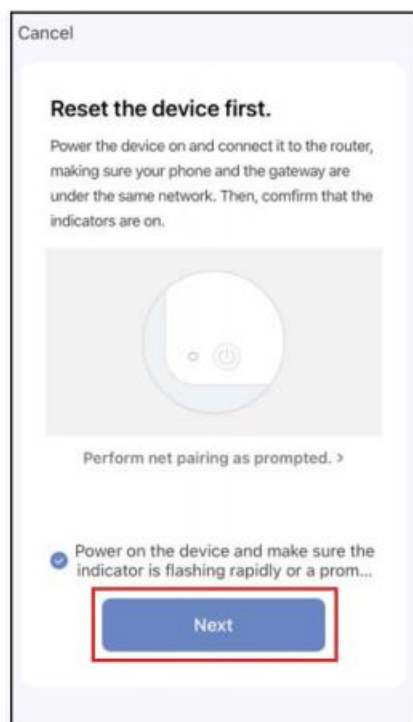


**(4)** Click “Add Device” or “+”, and then select “Security & Video Surveillance” >> “NVR” to add device.

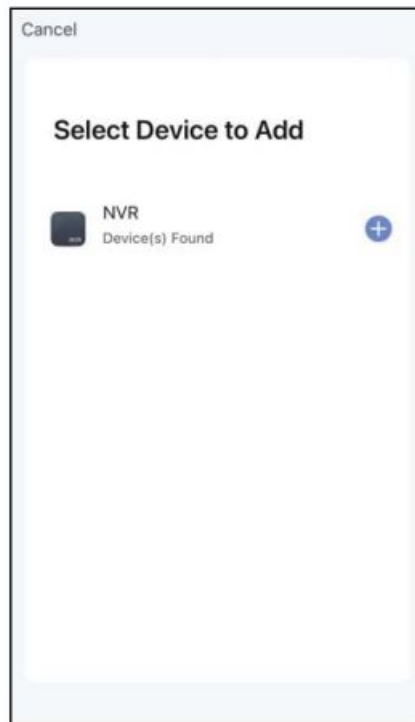



**(5)** Reset the device first.

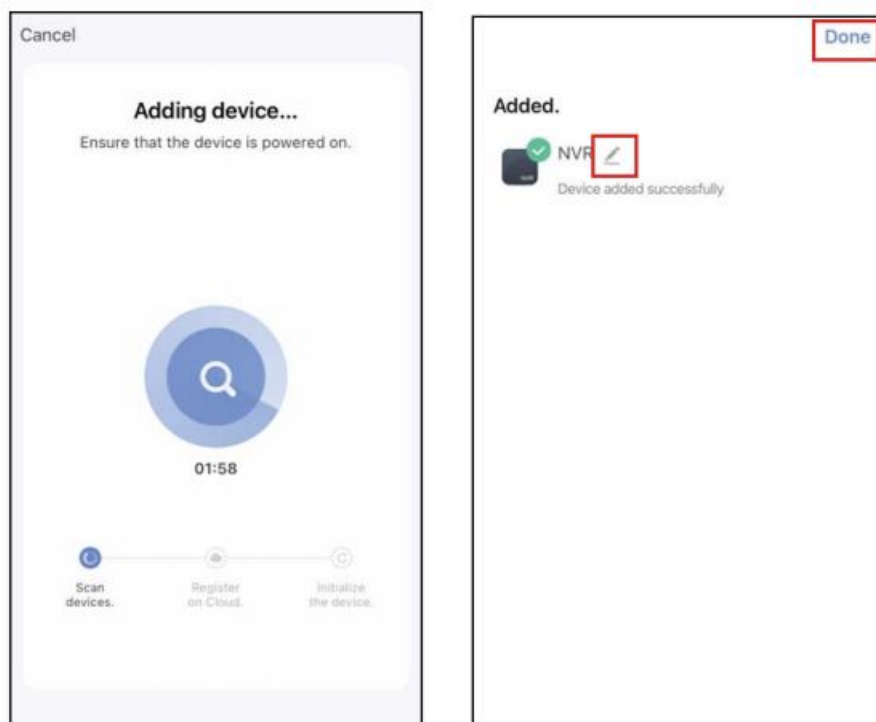
Click “Next” and the devices on the same network segment will be auto searched.



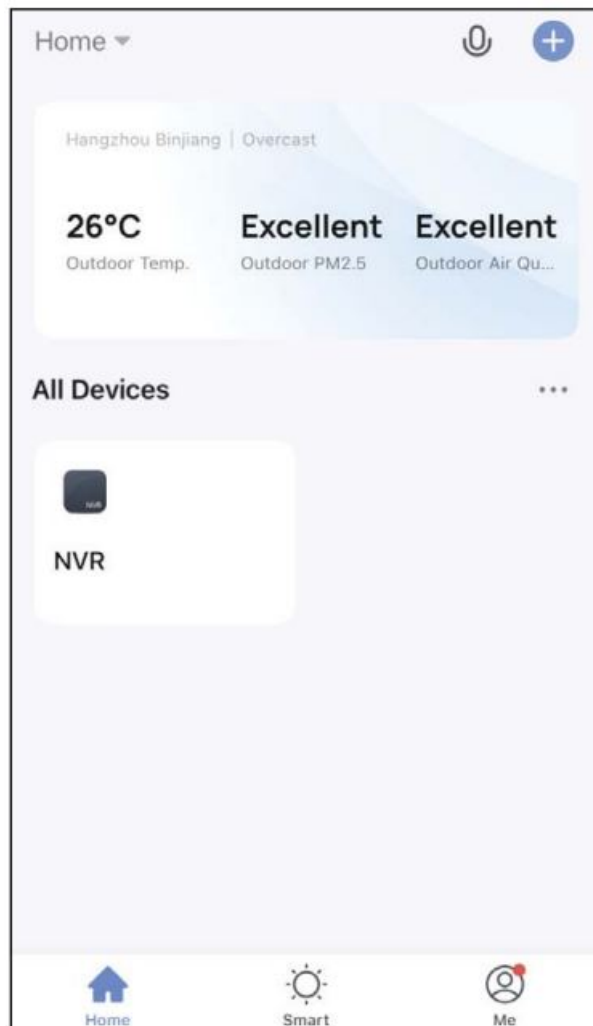
**(6)** In the device adding list, select the device you need and then tap “+”.



(7) When connecting, you should make sure your router, mobile, and NVR are on the same network segment. When camera added successfully, click “” you could also DIY the camera’s name.



(8) In “NVR” interface, click ” ... ”, and you can set up the common functions of NVR.



### FCC Statement

This equipment has been tested and found to comply with the limits for a Class B digital device, pursuant to part 15 of the FCC Rules. These limits are designed to provide reasonable protection against harmful interference in a residential installation. This equipment generates, uses and can radiate radio frequency energy and, if not installed and used in accordance with the instructions, may cause harmful interference to radio communications. However, there is no guarantee that interference will not occur in a particular installation. If this equipment does cause harmful interference to radio or television reception, which can be determined by turning the equipment off and on, the user is encouraged to try to correct the interference by one or more of the following measures:

- Reorient or relocate the receiving antenna.
- Increase the separation between the equipment and receiver.
- Connect the equipment into an outlet on a circuit different from that to which the receiver is connected.
- Consult the dealer or an experienced radio/TV technician for help.

### FCC Radiation Exposure Statement

This device complies with FCC radiation exposure limits set forth for an uncontrolled environment and it also complies with Part 15 of the FCC RF Rules. This equipment must be installed and operated in accordance with provided instructions and the antenna(s) used for this transmitter must be installed to provide a separation distance of at least 20 cm from all persons and must not be co-located or operating in conjunction with any other antenna or transmitter. End-users and installers must be provide with antenna installation instructions and consider removing the no-collocation statement.

This device complies with Part 15 of the FCC Rules. Operation is subject to the following two conditions: (1) this device may not cause harmful interference, and (2) this device must accept any interference received, including interference that may cause undesired operation.

**Caution!**

Any changes or modifications not expressly approved by the party responsible for compliance could void the user’s authority to operate the equipment.

**Documents / Resources**

	<p><a href="#">MEARI IView 104W/T Network Video Recorder WiFi Kit</a> [pdf] User Guide IVIEW1, 2AG7C-IVIEW1, 2AG7CIVIEW1, IView 104W T Network Video Recorder WiFi Kit, IVie w 104W T, Network Video Recorder WiFi Kit</p>
---	--

Manuals+.