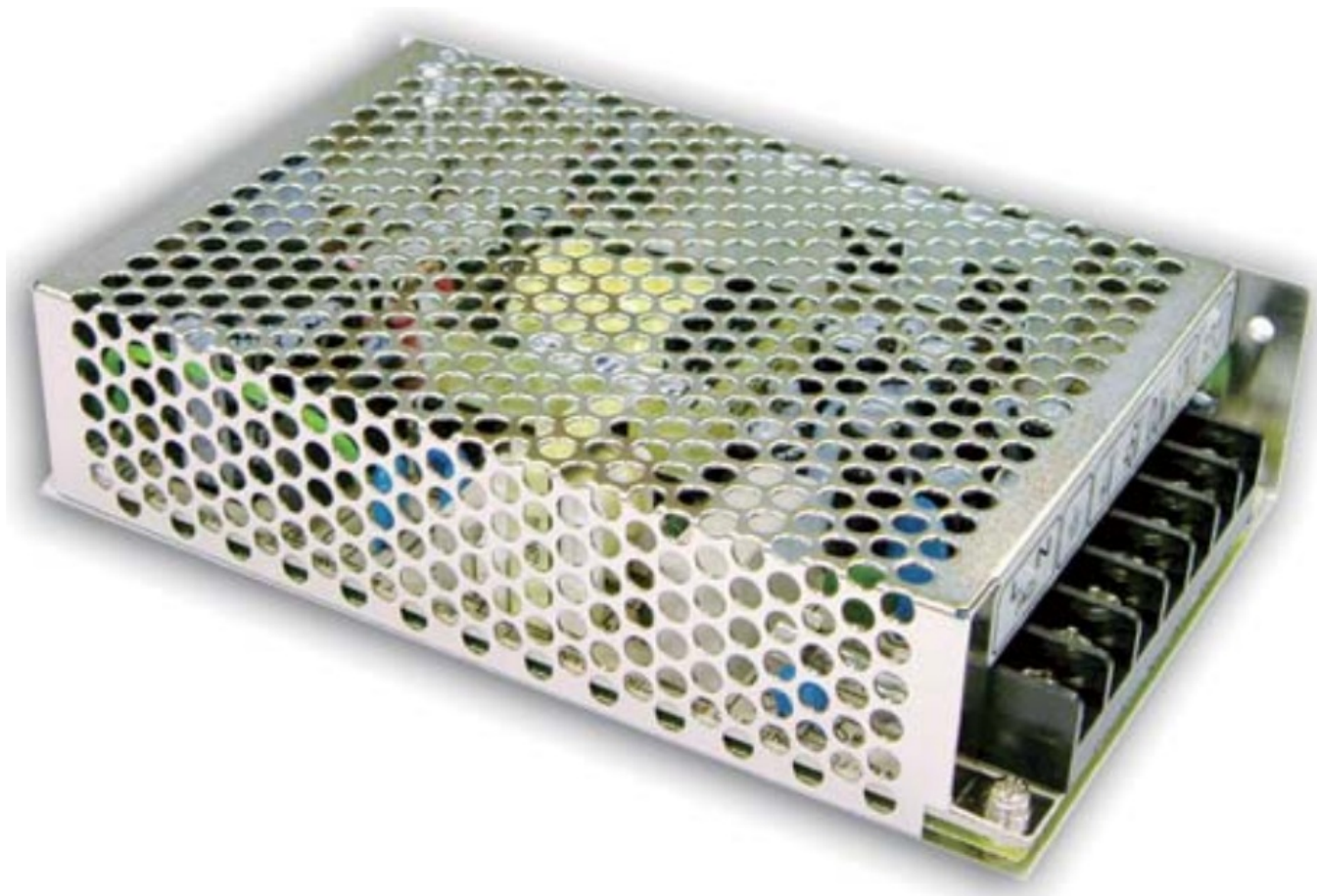


MEAN WELL RS-100-3.3 100W Single Output Switching Power Supply Owner's Manual

[Home](#) » [MEAN WELL](#) » MEAN WELL RS-100-3.3 100W Single Output Switching Power Supply Owner's Manual



MEAN WELL RS-100-3.3 100W Single Output Switching Power Supply



Contents

- [1 Features](#)
- [2 GTIN CODE](#)
- [3 SPECIFICATION](#)
- [4 Mechanical Specification](#)
- [5 Block Diagram](#)
- [6 Derating Curve](#)
- [7 Static Characteristics](#)
- [8 Customer Support](#)
- [9 Documents / Resources](#)
 - [9.1 References](#)
- [10 Related Posts](#)

Features

- Universal AC input/ Full range
- Protections: Short circuit/ Overload/ Over voltage
- Cooling by free air convection
- LED indicator for power on
- 100% full load burn-in test
- All using 105°C long life electrolytic capacitors
- Withstand 300VAC surge input for 5 second
- High operating temperature up to 70°C
- Withstand 5G vibration test

- High efficiency, long life and high reliability
- 3 years warranty

GTIN CODE

MW Search: <https://www.meanwell.com/serviceGTIN.aspx>

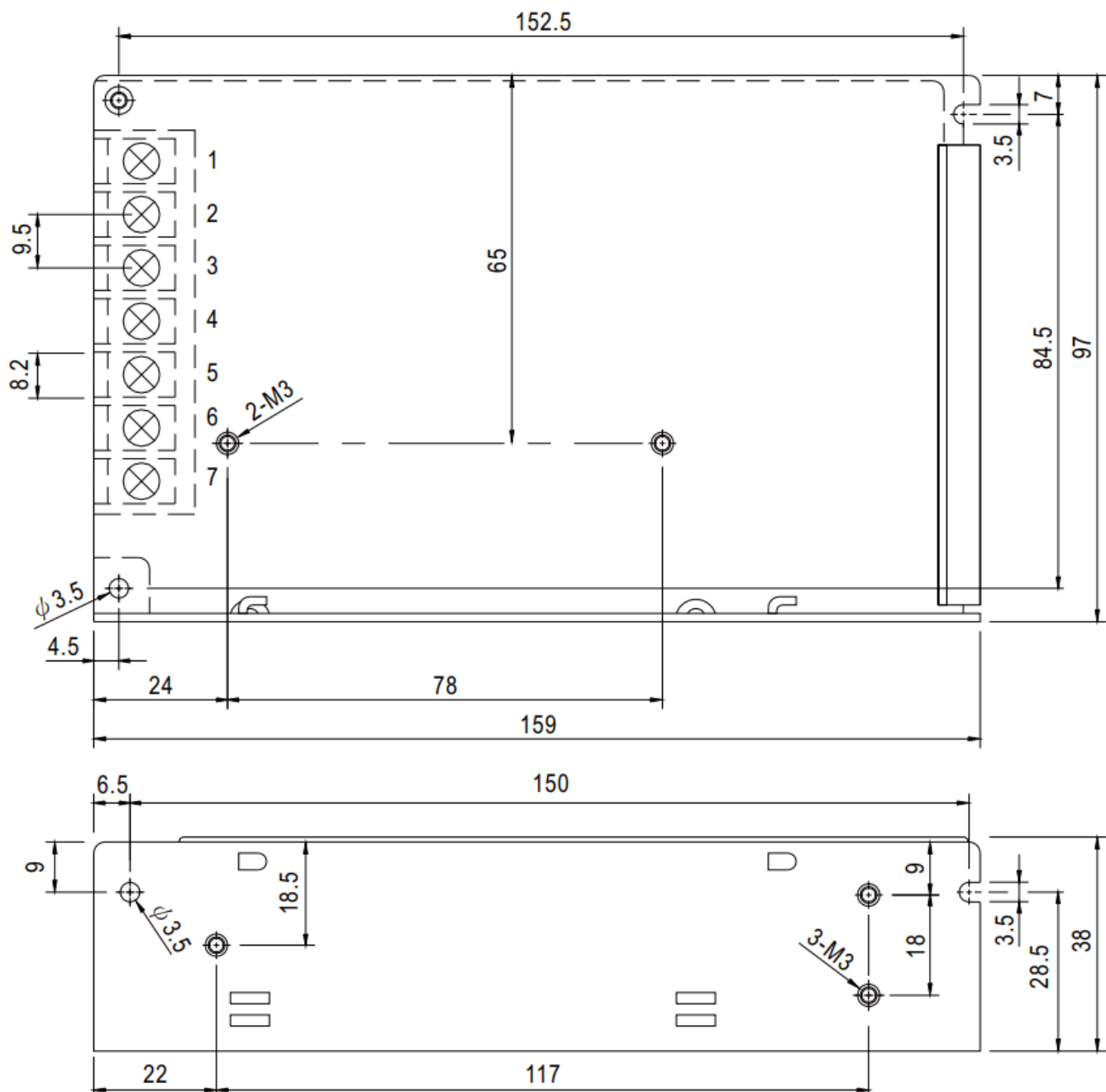
SPECIFICATION

MODEL		RS-100-3.3	RS-100-5	RS-100-12	RS-100-15	RS-100-24	RS-100-48
OUTPUT	DC VOLTAGE	3.3V	5V	12V	15V	24V	48V
	RATED CURRENT	20A	16A	8.5A	7A	4.5A	2.3A
	CURRENT RANGE	0 ~ 20A	0 – 16A	0 – 8.5A	0 – 7A	0 – 4.5A	0- 2.3A
	RATED POWER	66W	BOW	102W	105W	108W	110.4W
	RIPPLE & NOISE (max.) Note.2	80mVp-p	80mVp-p	120mVp-p	120mVp-p	120mVp-p	200mVp-p
	VOLTAGE ADJ. RANGE	3.2V ~ 3.5V	4.75 ~ 5.5V	11.4~ 13.2V	14.25 – 16.5V	22.8 – 26.4V	45.6 – 52.8V
	VOLTAGE TOLERANCE Note.3	±3.0%	±2.0%	±1.0%	±1.0%	±1.0%	±1.0%
	LINE REGULATION Note.4	±0.5%	±0.5%	±0.5%	±0.5%	±0.5%	±0.5%
	LOAD REGULATION Note.5	±2.0%	±1.0%	±0.5%	±0.5%	±0.5%	±0.5%
	SETUP, RISE TIME	500ms , 20ms/230VAC 1200ms, 30ms/115VAC at full load					
	HOLD UP TIME (Typ.)	95ms/230VAC 17ms/115VAC at full load					
INPUT	VOLTAGE RANGE	88 – 264VAC 125- 373VDC (Withstand 300VAC surge for 5sec. Without damage)					
	FREQUENCY RANGE	47 – 63Hz					
	EFFICIENCY (Typ.)	74%	77%	81%	82%	84%	84%
	AC CURRENT (Typ.)	2.5A/115VAC 1.5A/230VAC					
	INRUSH CURRENT (Typ.)	COLD START 40A/230VAC					
	LEAKAGE CURRENT	<2mA/ 240VAC					

PROTECTION	OVERLOAD	110 – 150% rated output power					
		Protection type: Hiccup mode, recovers automatically after fault condition is removed					
	OVER VOLTAGE	3.8 ~ 4.45 V	5.75 – 6.75V	13.8 – 16.2 V	17.25 – 20.25V	27.6 – 32.4 V	55.2 – 64.8 V
		Protection type: Hiccup mode, recovers automatically after fault condition is removed					
ENVIRONMENT	WORKING TEMP.	-25- +70°C (Refer to “Derating Curve”)					
	WORKING HUMIDITY	20 – 90% RH non-condensing					
	STORAGE TEMP., HUMIDITY	-40 ~ +85°C, 10-95% RH					
	TEMP. COEFFICIENT	±0.03%/C (0 – 50°C)					
	VIBRATION	10 – 500Hz, 5G 10min./1cycle, period for 60min. each along X, Y, Z axes					
SAFETY & EMC (Note 6)	SAFETY STANDARDS	UL62368-1, TUV BS EN/EN62368-1 , AS/NZS 62368.1, EAC TP TC 004 approved					
	WITHSTAND VOLTAGE	I/P-O/P3KVAC I/P-FG:2KVAC O/P-FG:0.5KVAC					
	ISOLATION RESISTANCE	1/P-O/P, 1/P-FG, 0/P-FG:1 QOM Ohms/ 500VDC / 25°Ci 70% RH					
	EMC EMISSION	Compliance to BS EN/EN55032 (CISPR32) Class B, BS EN/EN61000-3-2,-3, EAC TP TC 020					
	EMC IMMUNITY	Compliance to BS EN/EN61000-4-2,3,4,5,6,8,11, BS EN/EN55035, BS EN/EN61000-6-2 (BS EN/EN50082-2) , heavy industry level, EAC TP TC 020					
OTHERS	MTBF	3196.6K hrs min. Telcordia SR-332 (Bellcore); 526.7K hrs min. MIL-HDBK-217F (25°C)					
	DIMENSION	159’97’38mm (L’W’H)					
	PACKING	0.6Kg; 24pcs/15.4Kg/0.83CUFT					

NOTE	<ol style="list-style-type: none"> 1. All parameters NOT specially mentioned are measured at 230VAC input, rated load and 25°C of ambient temperature. 2. Ripple & noise are measured at 20MHz of bandwidth by using a 12" twisted pair-wire terminated with a 0.1uf & 47uf parallel capacitor. 3. Tolerance : includes set up tolerance, line regulation and load regulation. 4. Line regulation is measured from low line to high line at rated load. 5. Load regulation is measured from 0% to 100% rated load. 6. The power supply is considered a component which will be installed into a final equipment. The final equipment must be re-confirmed that it still meets EMC directives. For guidance on how to perform these EMC tests, please refer to "EMI testing of component power supplies." (as available on http://www.meanwell.com) 7. Length of set up time is measured at cold first start. Turning ON/OFF the power supply very quickly may lead to increase of the set up time. 8. The ambient temperature derating of 3.5°C /1000m with fanless models and of 5°C/1000m with fan models for operating altitude higher than 2000m(6500ft) Product Liability Disclaimer : For detailed information, please refer to https://www.meanwell.com/serviceDisclaimer.aspx
------	---

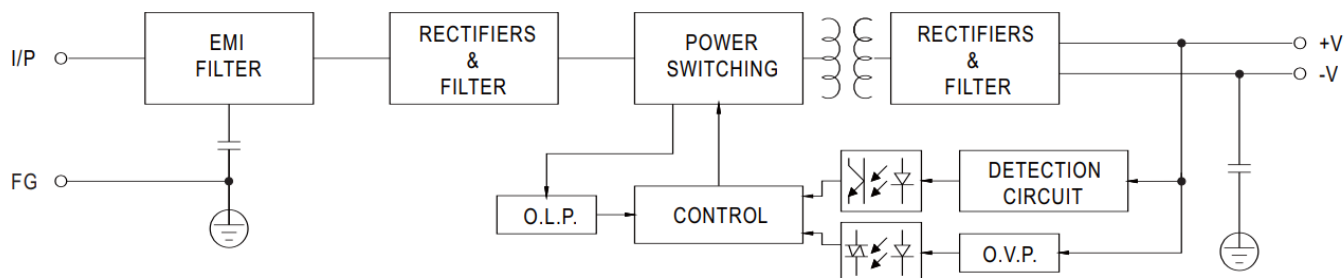
Mechanical Specification



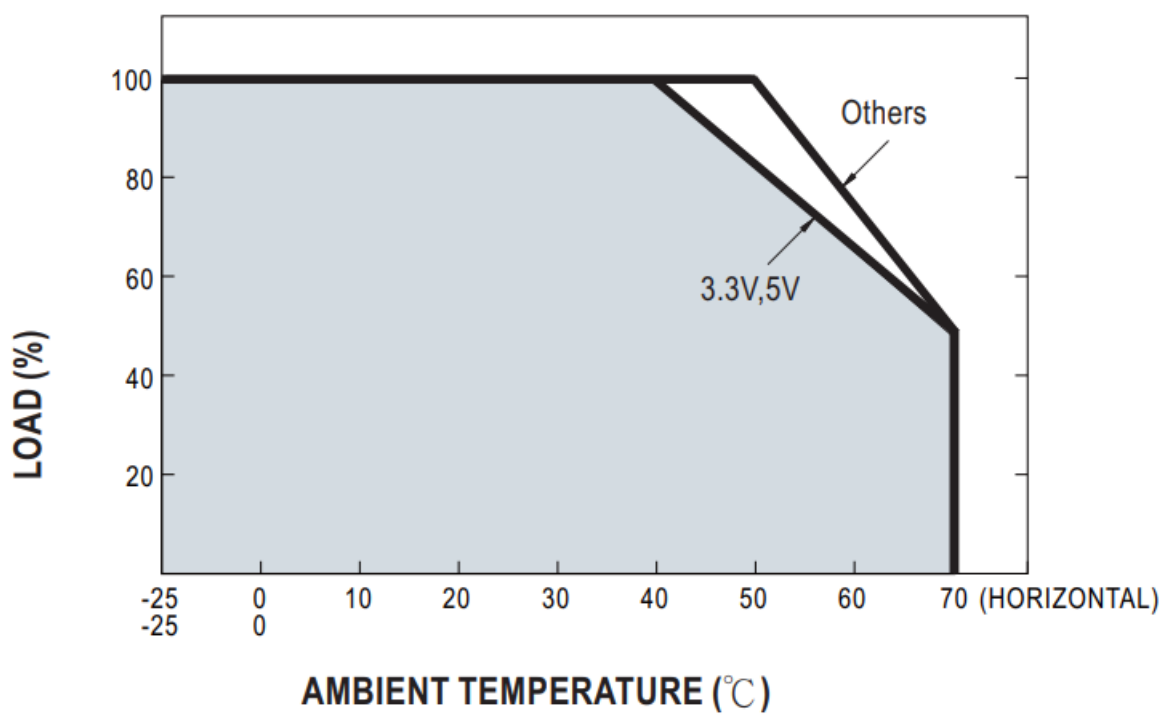
Terminal Pin No. Assignment

Pin No.	Assignment	Pin No.	Assignment
1	AC/L	4,5	DCOUTPUT-V
2	AC/N	6,7	DCOUTPUT+V
3	FG-1/2		

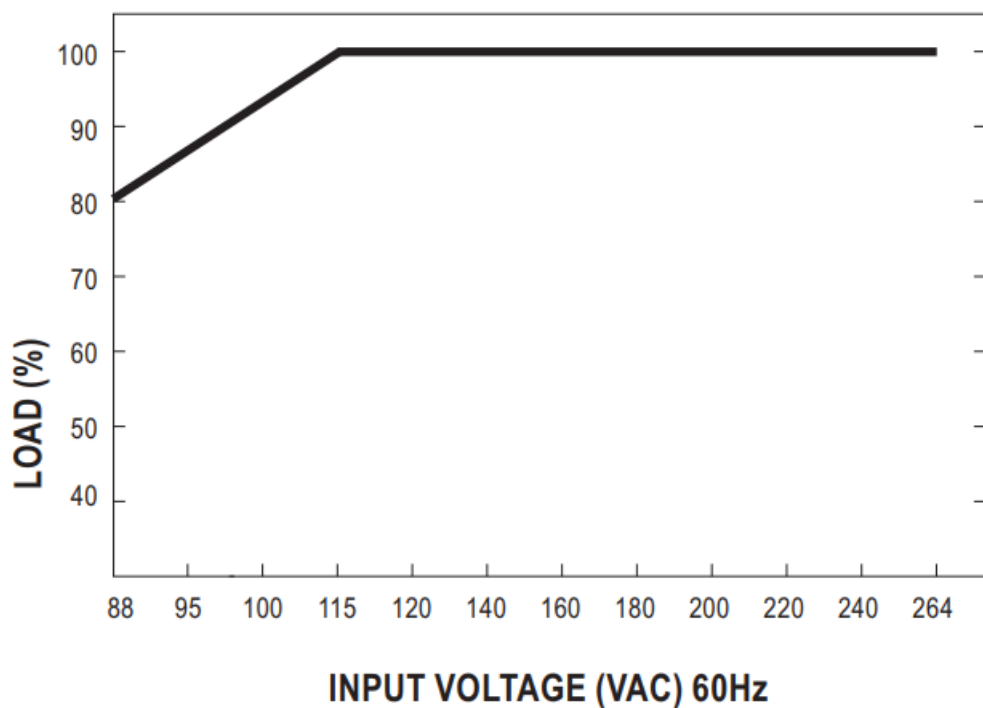
Block Diagram



Derating Curve



Static Characteristics



Customer Support



AS/NZS62368-1



UL62368-1



BS EN/EN62368-1



IEC62368-1




TPTC004



[Arrow.com](https://www.arrow.com)



Documents / Resources

	<p>MEAN WELL RS-100-3.3 100W Single Output Switching Power Supply [pdf] Owner's Manual</p> <p>RS-100-3.3 100W Single Output Switching Power Supply, RS-100-3.3, 100W Single Output Switching Power Supply, Single Output Switching Power Supply, Output Switching Power Supply, Switching Power Supply, Power Supply, Supply</p>
---	--

References

- [MEAN WELL Switching Power Supply Manufacturer](#)
- [Global Trade Item Number \(GTIN\)-MEAN WELL Switching Power Supply Manufacturer](#)