



MDT BE-TA55P6.G2 Button Plus Installation Guide

[Home](#) » [MDT](#) » MDT BE-TA55P6.G2 Button Plus Installation Guide 

MDT BE-TA55P6.G2 Button Plus Installation Guide



Contents

- [1 Push-button \(Plus, Plus TS\) 55 | Series .02 \[BE-TA55xx.x2\]](#)
- [2 Product variants](#)
- [3 Accessories – MDT Glass cover frame, Assortment 55](#)
- [4 Documents / Resources](#)
- [5 Related Posts](#)

Push-button (Plus, Plus TS) 55 | Series .02 [BE-TA55xx.x2]

The MDT push-button (Plus, Plus TS) 55 is a KNX push-button with horizontally arranged pairs of buttons, suitable for installation in 55 mm switch ranges from various manufacturers. Available in white matt or glossy. The buttons can be labelled via the central labelling field. The buttons can be configured as single buttons or in pairs. Applications include switching and dimming the lighting, adjusting the roller shutters and blinds or triggering a scene.

Comprehensive button functions

A function can be triggered by a single button or a pair of buttons. This provides a wide range of operating options. The button functions include "Switch", "Send values", "Scene", "Switch/send values short/long (with two objects)", "Blinds/Shutter" and "Dimming".

Innovative group control

Standard functions can be extended with an extra-long keypress. For example, the blind function in a living room. With the normal short/long keypress, a single blind is operated. With the additional extra-long keypress, for example, all blinds in the living room (group) are operated centrally. The innovative group control can also be used for lighting. For example, a short keypress switches a single light on/off, a long keypress switches all lights in the room, and an extra-long keypress switches the entire floor.

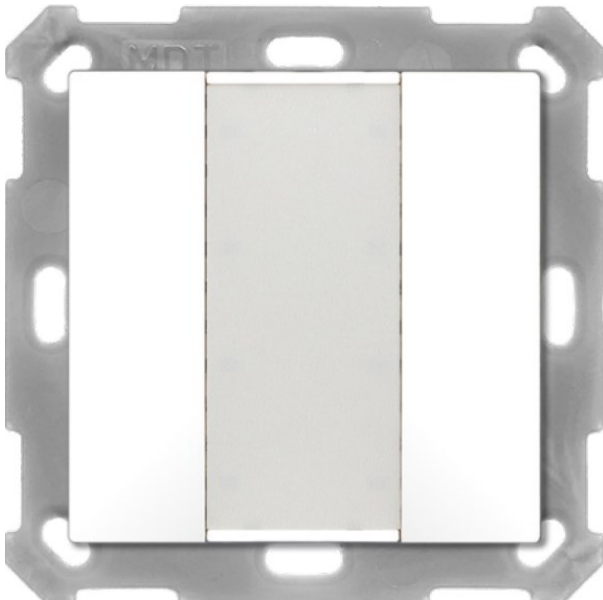
Status LED (Push-button Plus [TS] 55)

Next to the buttons are two-colour status LEDs which can react to internal objects, external objects or button presses. The behaviour can be set differently (red/green/off and permanently on or flashing). There is an additional LED in the centre which can be used as an orientation light.

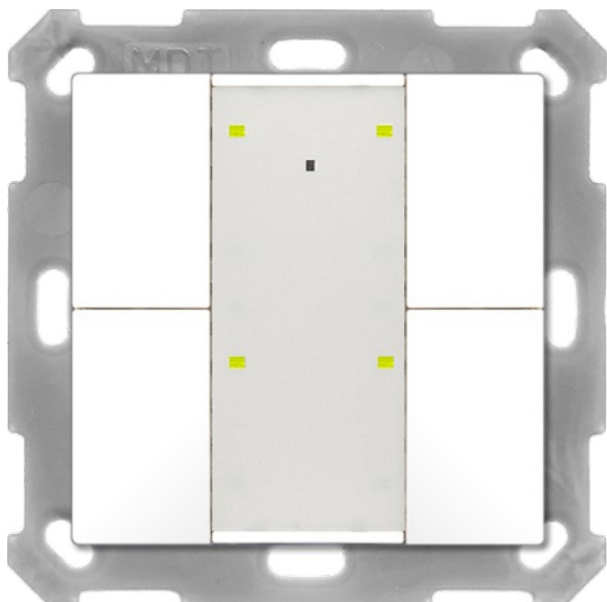
Logic functions (Push-button Plus [TS] 55)

A variety of functions can be realised through a total of 4 logic blocks. The logic function can process both internal and external objects.

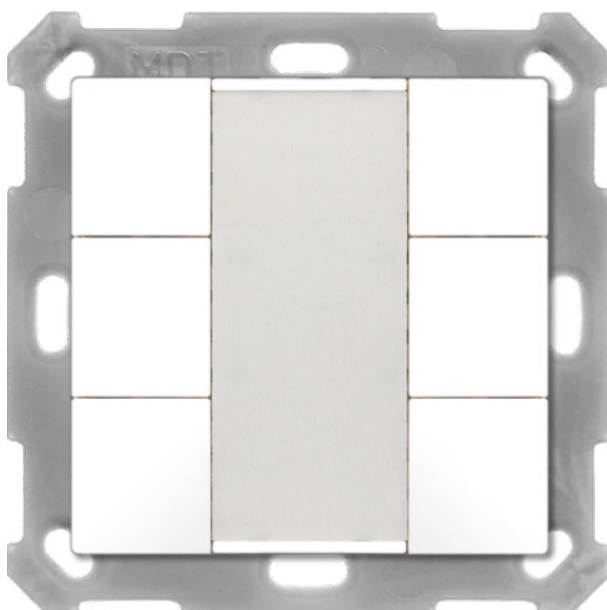
- BE-TA5502.02



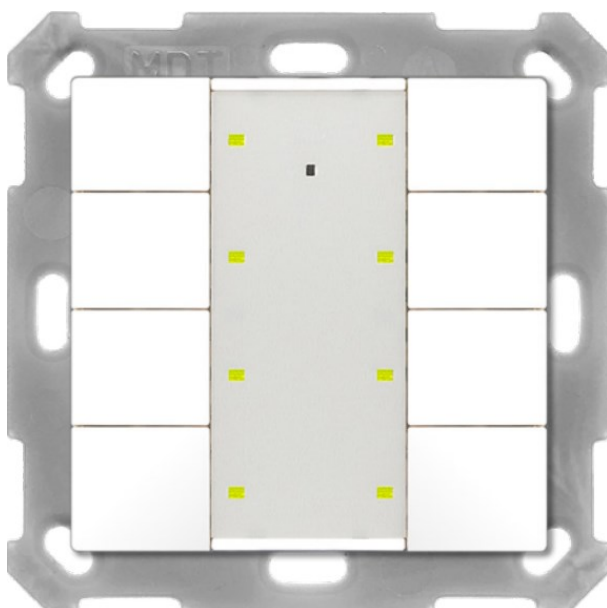
- BE-TA55P4.02



- BE-TA5506.02



- BE-TA55T8.02



Integrated temperature sensor (Push-button Plus TS 55)

The integrated temperature sensor can be used for room temperature control. The measured temperature value

of the sensor can, for example, be sent directly to the integrated temperature controller of the MDT heating actuator. This eliminates the need for an additional temperature sensor in the room. The sending conditions of the temperature value are adjustable. An upper and lower threshold value are available.

Long Frame Support

The Push-button supports “long frames” (longer telegrams). These contain more user data per telegram, which significantly reduces the programming time.

Product variants

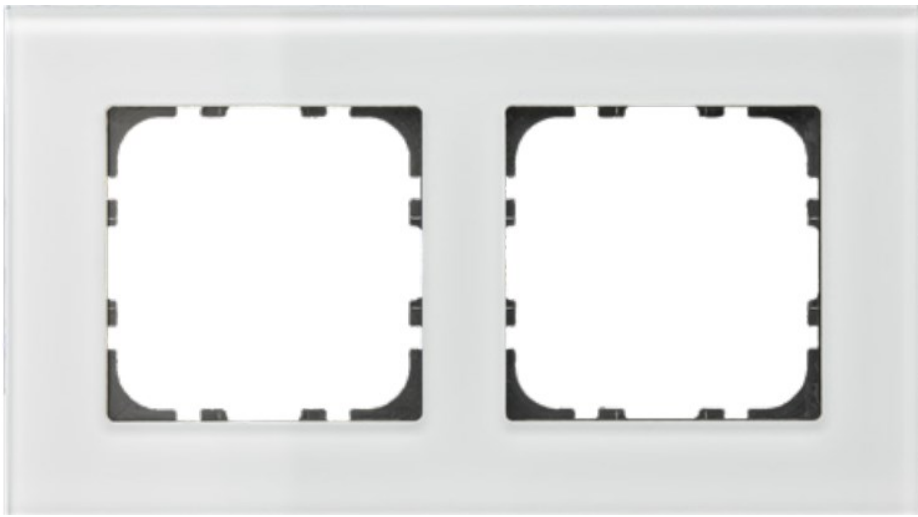
Push-button 55	Push-button Plus 55	Push-button Plus TS 55
White matt		
BE-TA5502.02	BE-TA55P2.02	BE-TA55T2.02
BE-TA5504.02	BE-TA55P4.02	BE-TA55T4.02
BE-TA5506.02	BE-TA55P6.02	BE-TA55T6.02
BE-TA5508.02	BE-TA55P8.02	BE-TA55T8.02
White glossy		
BE-TA5502.G2	BE-TA55P2.G2	BE-TA55T2.G2
BE-TA5504.G2	BE-TA55P4.G2	BE-TA55T4.G2
BE-TA5506.G2	BE-TA55P6.G2	BE-TA55T6.G2
BE-TA5508.G2	BE-TA55P8.G2	BE-TA55T8.G2

Accessories – MDT Glass cover frame, Assortment 55

- BE-GTR1W.01



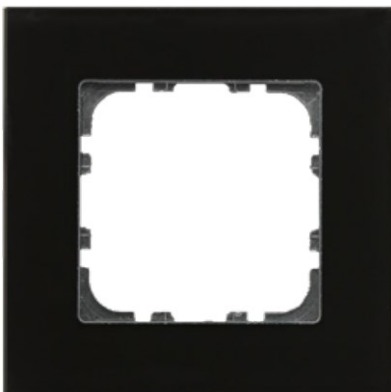
- BE-GTR2W.01



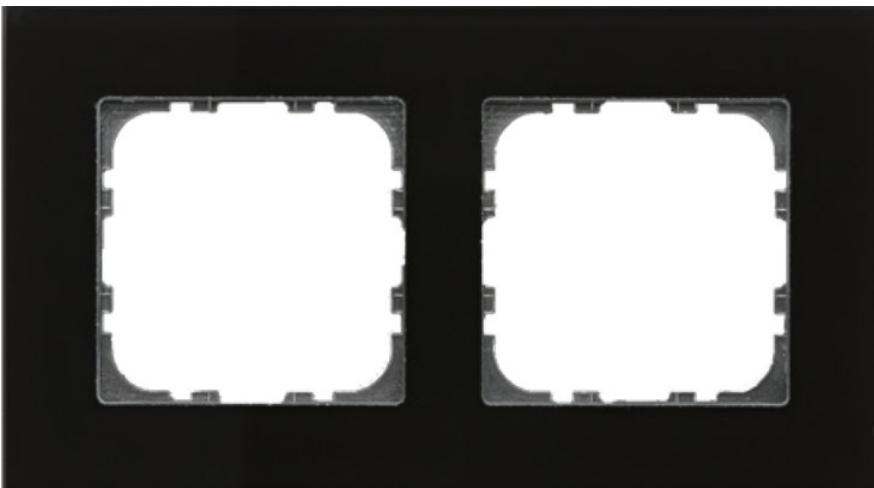
- BE-GTR3W.01



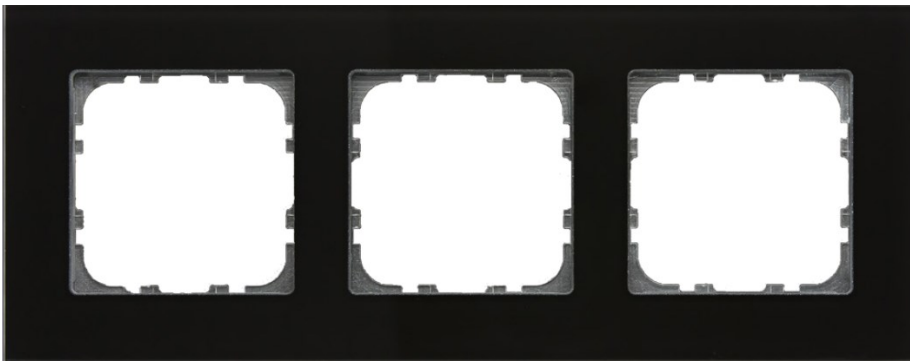
- BE-GTR1S.01



- BE-GTR2S.01



- BE-GTR3S.01



MDT technologies GmbH · Papiermühle 1 · 51766 Engelskirchen · Germany
Phone +49 (0) 2263 880 ·
Email: knx@mdt.de ·
Web: www.mdt.d

Documents / Resources

	<p>MDT BE-TA55P6.G2 Button Plus [pdf] Installation Guide BE-TA55P6.G2, BE-TA5502.02, BE-TA55P4.02, BE-TA55P6.G2 Button Plus, Button Plus, Plus</p>
--	--

Manuals+.