



## McWill REV3.0 LYNX-II LCD Replacement MOD User Guide

[Home](#) » [McWill](#) » McWill REV3.0 LYNX-II LCD Replacement MOD User Guide 

# LYNX

### LYNX-II LCD Replacement MOD REV3.0 Quick Guide

#### Contents

- [1 REV3.0 LYNX-II LCD Replacement MOD](#)
- [2 Remove not needed Parts and 5 Volt check](#)
- [3 VGA connector \(if needed\)](#)
- [4 Power and backlight button](#)
- [5 Soldering data lines](#)
- [6 Documents / Resources](#)

### REV3.0 LYNX-II LCD Replacement MOD

**ATTENTION !** Installing the LCD replacement is on your own risk! Your LYNX-II could be damaged, if you are not able to do this modification!

**Liability impossible!**

**Required materials:**

LYNX-kit, VGA connector with screws, 18 wires round about 20 cm (8 inches) length (IDE cable) n

### Remove not needed Parts and 5 Volt check

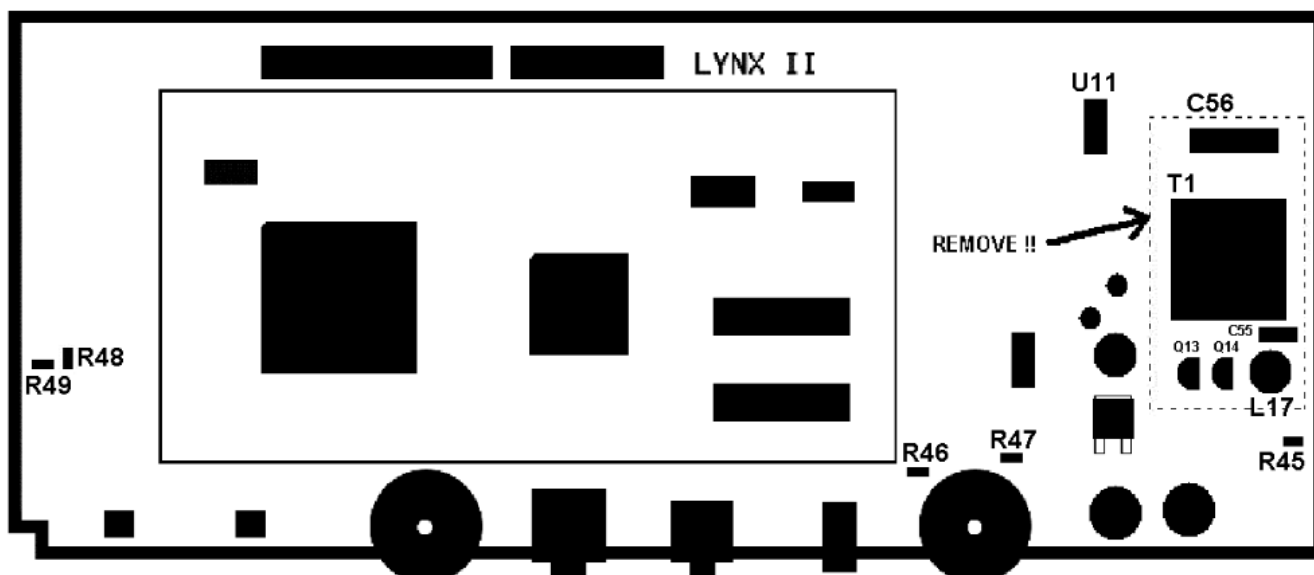


**ATTENTION !** Make sure that all power is off. Disconnect ALL cables.

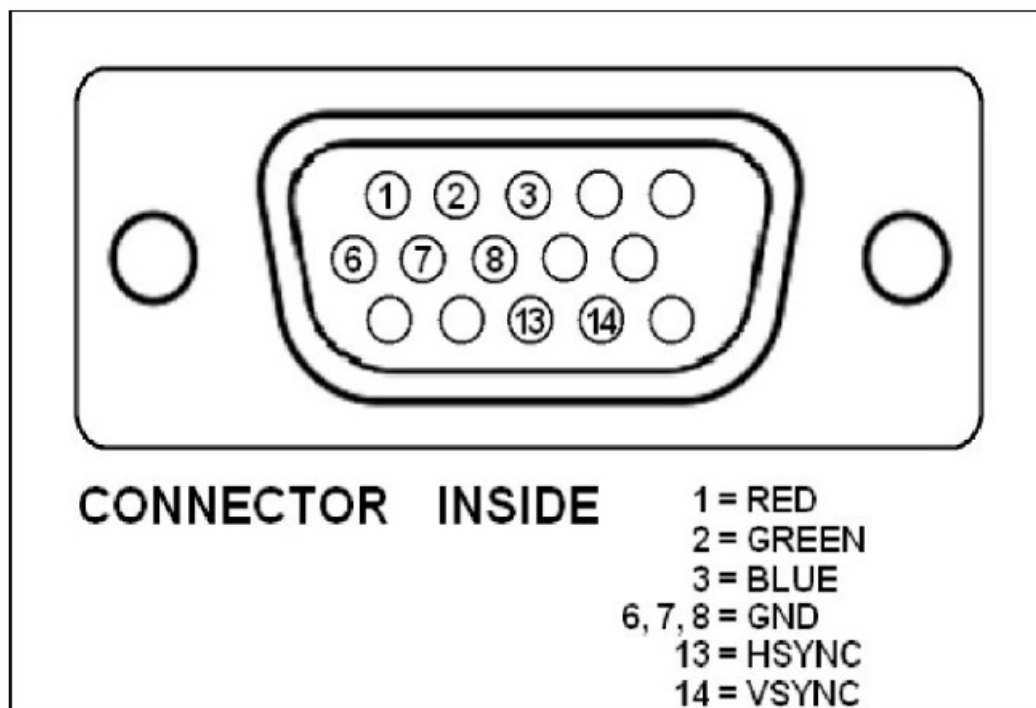
1. Remove R45, R46, R47, R48 and R49 (optional C26) !!!
2. Remove L17 coil
3. Remove Q13 and Q14 transistors
4. Remove C55 and C56 capacitors
5. Remove T1 power module (optional)

**(see picture below)**

!!! Now check the 5 Volt with a voltmeter on VCC point (see 3rd step). If the voltage exceeds 5.45 Volt, repair your LYNX ! Otherwise the LYNX mod will be damaged  
 !!! (For testing you need to insert a cartridge!)

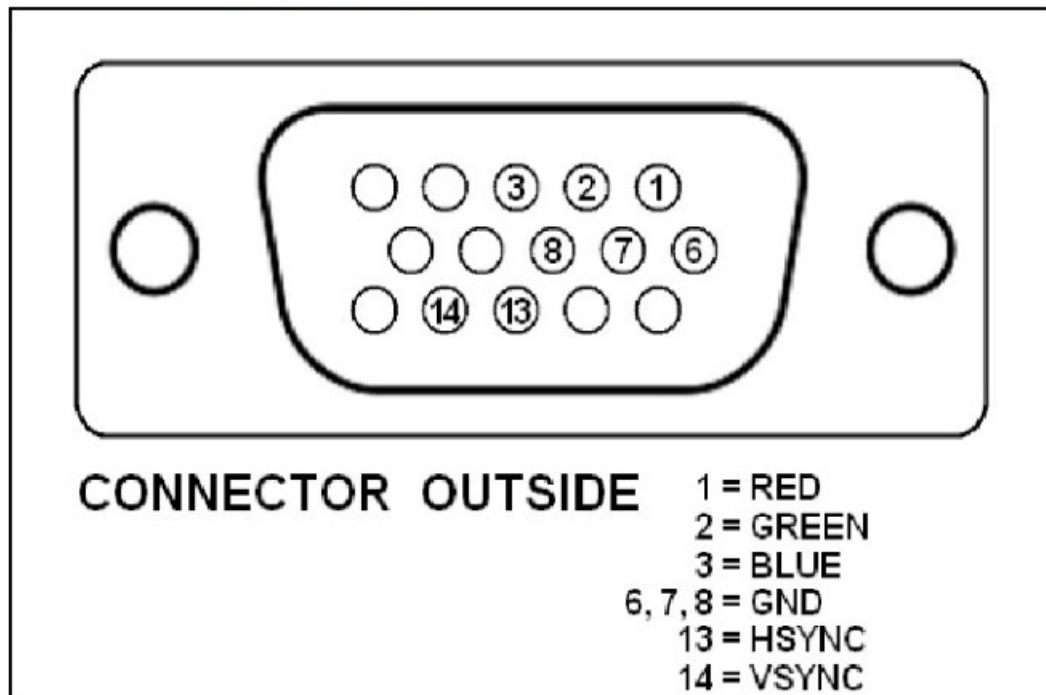


**VGA connector (if needed)**

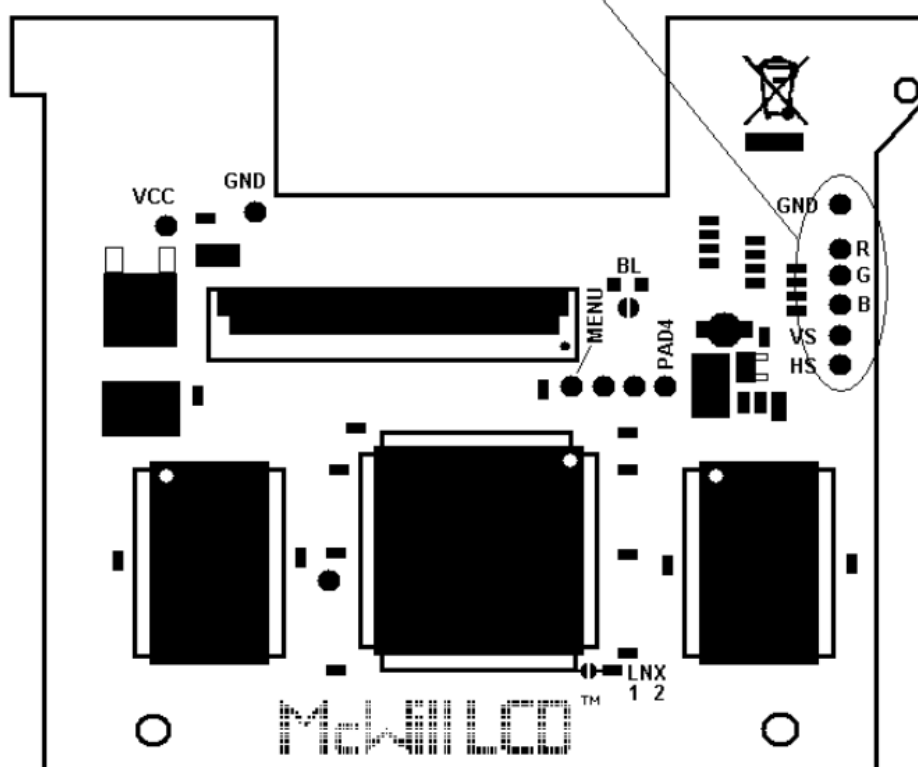


Connect the pins 6, 7 and 8 together.

Solder 6 wires to the pins 1, 2, 3, 13, 14 and (6, 7, 8) to the VGA connector.



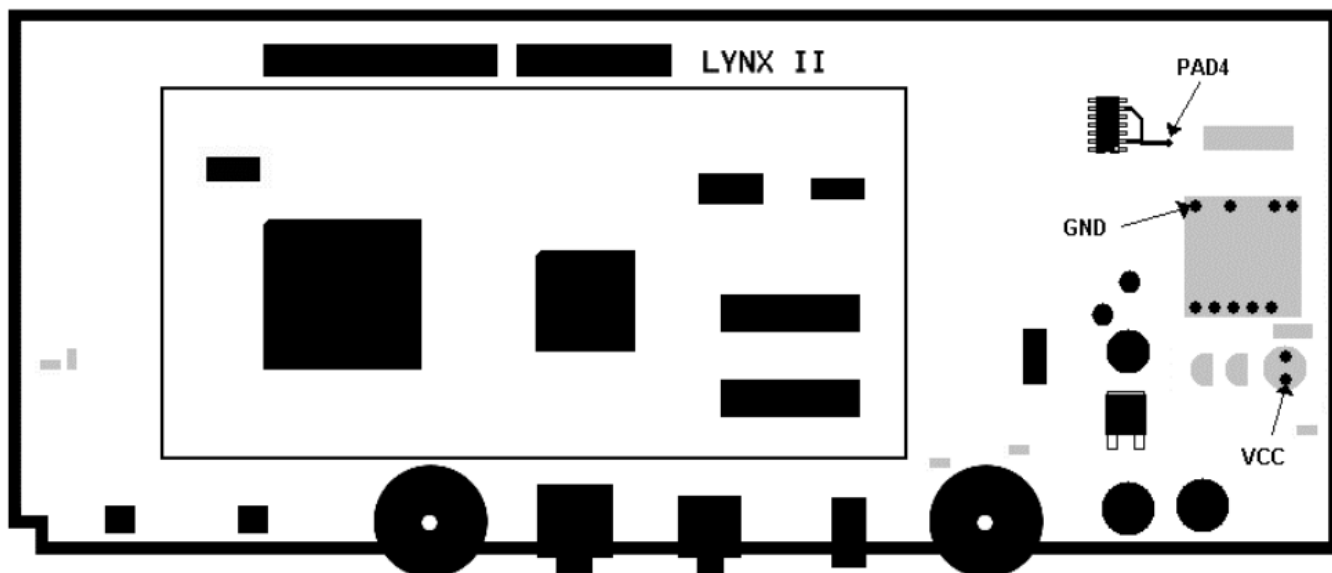
**After that you solder the other side of the wires to the LYNX mod.**



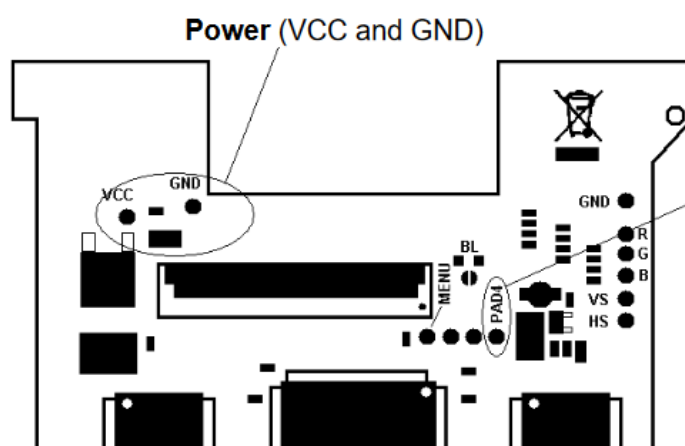
**!!! Use hot glue for the internal screws of VGA connector. Otherwise the screws may cause short circuit !!!**

### **Power and backlight button**

Now solder one wire to VCC (+5 Volt) and one wire to GND (Ground).



The wire of PAD4 has to be soldered to U11 (74HC74A) at pin 2



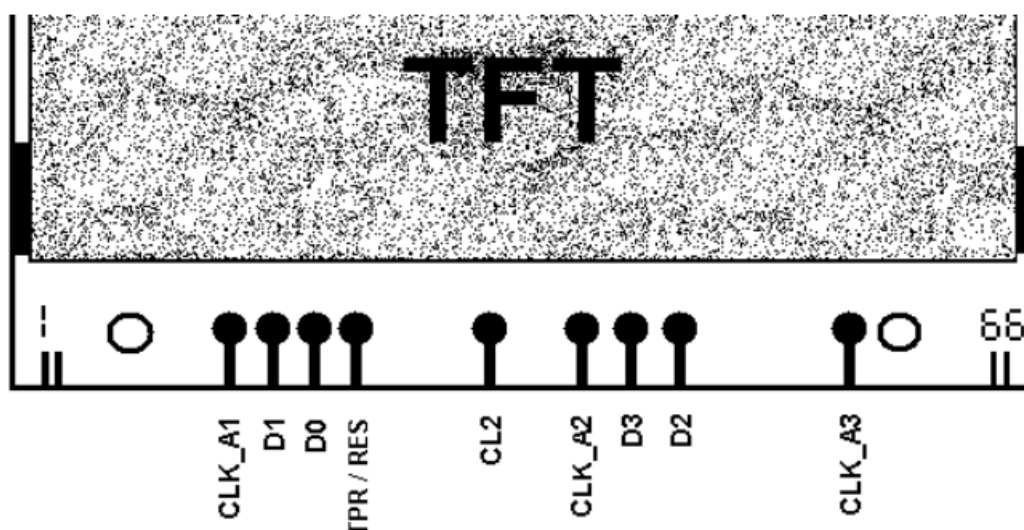
For controlling the backlight by thumbwheel you have to solder 2 wires from the thumbwheel **pad 1** and **pad 2** to the **square pads of BL**. Otherwise solder a solder blob onto **BL**.

**PAD 4** on the right.

If you **DON'T** want to install the VGA connector you can put a solder blob onto the **MENU pad 1**. Then you only have two selectable modes (only internal LCD) by pressing the backlight button. Otherwise:

1. Internal LCD; 2. Same as 1 with retro-style
3. VGA; 4. VGA with scanlines

## Soldering data lines



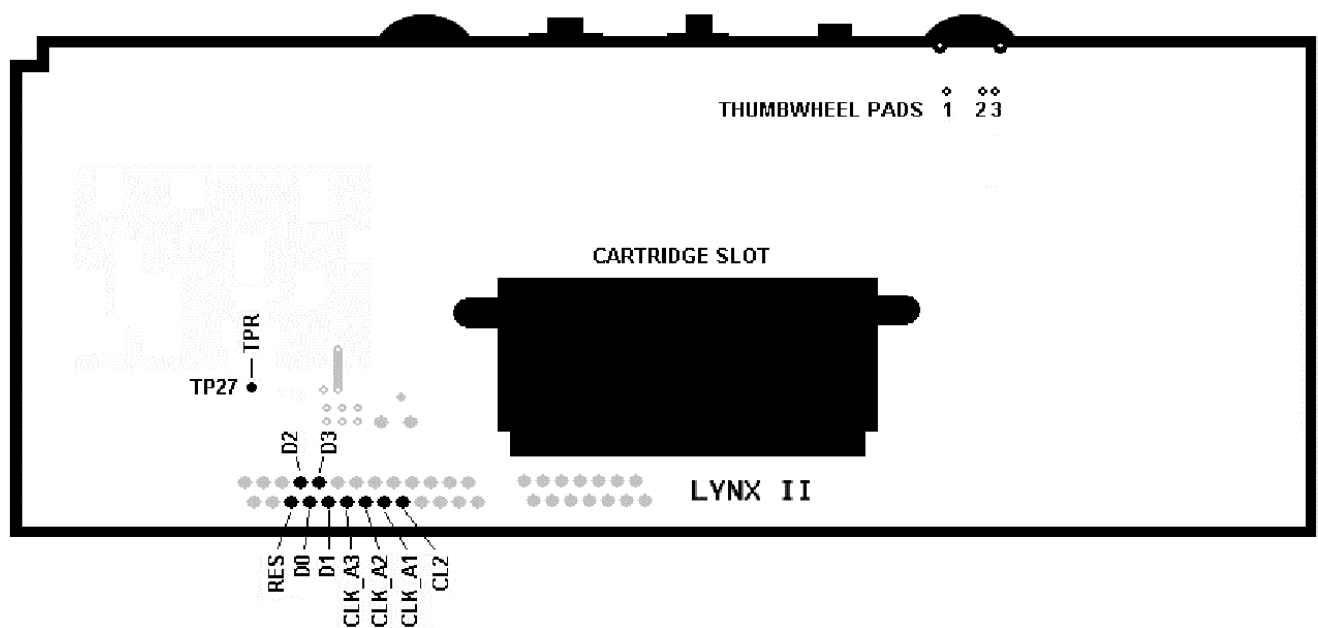
Last step is to solder the last 9 wires. Above you can see the LYNX-II mod and on the picture below you can see the LYNX-II. First solder all 9 wires to the

LYNX-II mod. After that solder the other side of the wires to the LYNX-II.

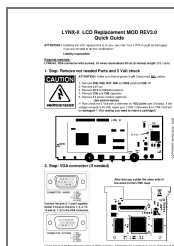
You can use RES or TPR, not both together !

For LYNX-II with chipset 1 (C104129-001) you have to use TPR (testpoint 27) only!

For using TPR jumper LNX\_1\_2 is closed, for using RES jumper LNX\_1\_2 is open !  
If you made everything correct, you'll love it!  
!!! At last check all connections again !!!



## Documents / Resources



[McWill REV3.0 LYNX-II LCD Replacement MOD](#) [pdf] User Guide

REV3.0 LYNX-II LCD Replacement MOD, REV3.0, LYNX-II LCD Replacement MOD, LCD Replacement MOD, Replacement MOD, MOD