



McWill LYNX-I LCD Replacement MOD User Guide

[Home](#) » [McWill](#) » McWill LYNX-I LCD Replacement MOD User Guide 

McWill LYNX-I LCD Replacement MOD



ATTENTION ! Installing the LCD replacement is on your own risk! Your LYNX-I could be damaged, if you are not able to do this modification!

Liability impossible!

Contents

- 1 [Required materials](#)
- 2 [Remove not needed Parts and 5 Volt check](#)
- 3 [VGA connector \(if needed\)](#)
- 4 [Power and backlight button](#)
- 5 [Soldering data lines](#)
- 6 [Documents / Resources](#)
- 7 [Related Posts](#)

Required materials

LYNX-kit, VGA connector with screws, 4 plastic screws, 11 wires round about 12 cm (5 inches), 8 small wires of 2 cm (1 inch)

Remove not needed Parts and 5 Volt check

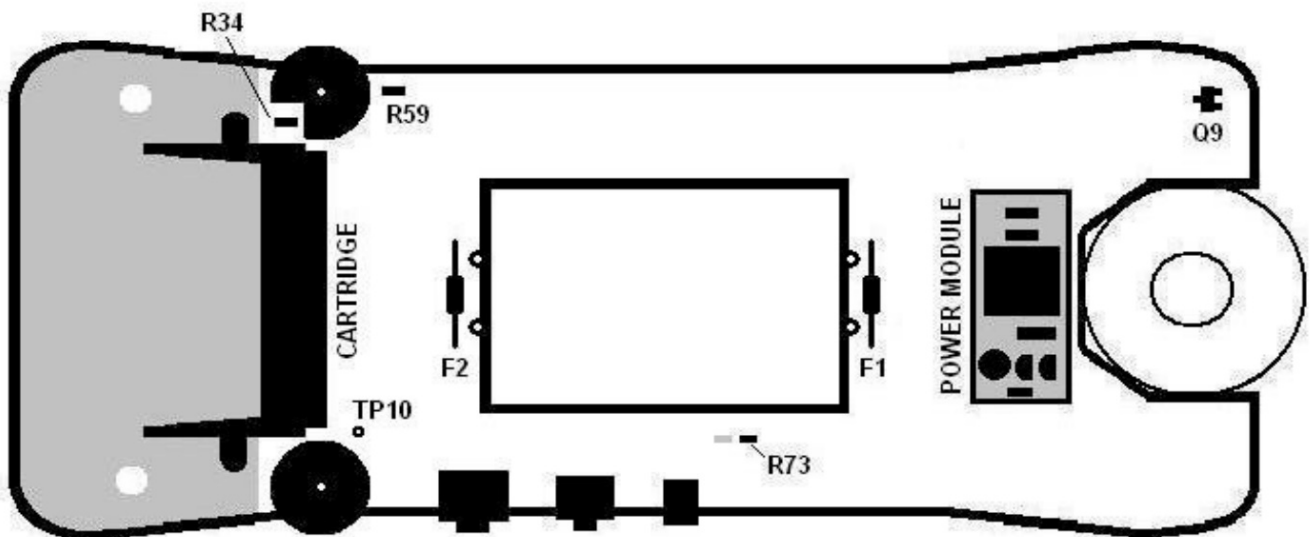
ATTENTION ! Make sure that all power is off. Disconnect ALL cables.

NOTE: The copper plane of the LYNX-I PCB is NOT GND, but 5 Volt !!!

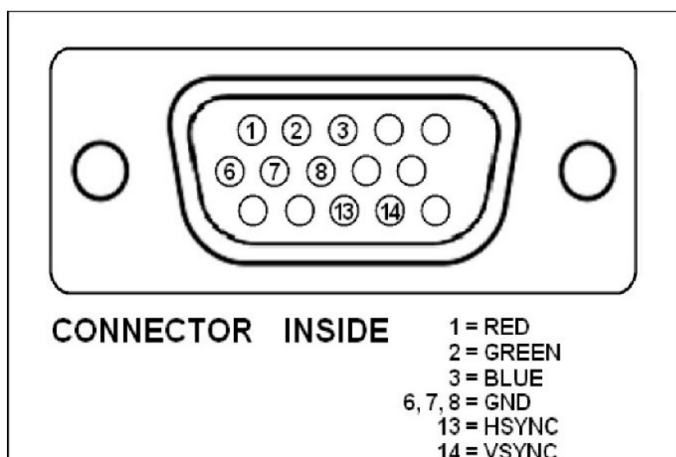


1. Remove POWER MODULE
2. Remove Q9 transistor and R73 resistor !!!
3. REMOVE R34 and R59 resistors.
4. Remove LCD; pull off the FPC carefully from the PCB like tape
5. Remove F1 and F2 fuses and CFL lamp (see picture below)

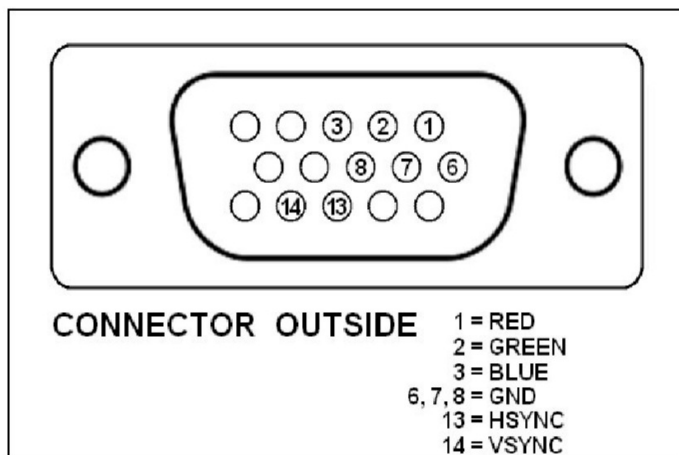
!!! Now check the 5 Volt with a voltmeter on VCC point (see 3rd step). If the voltage exceeds 5.45 Volt, repair your LYNX ! Otherwise the LYNX mod will be damaged !!! (For testing you need to insert a cartridge!)



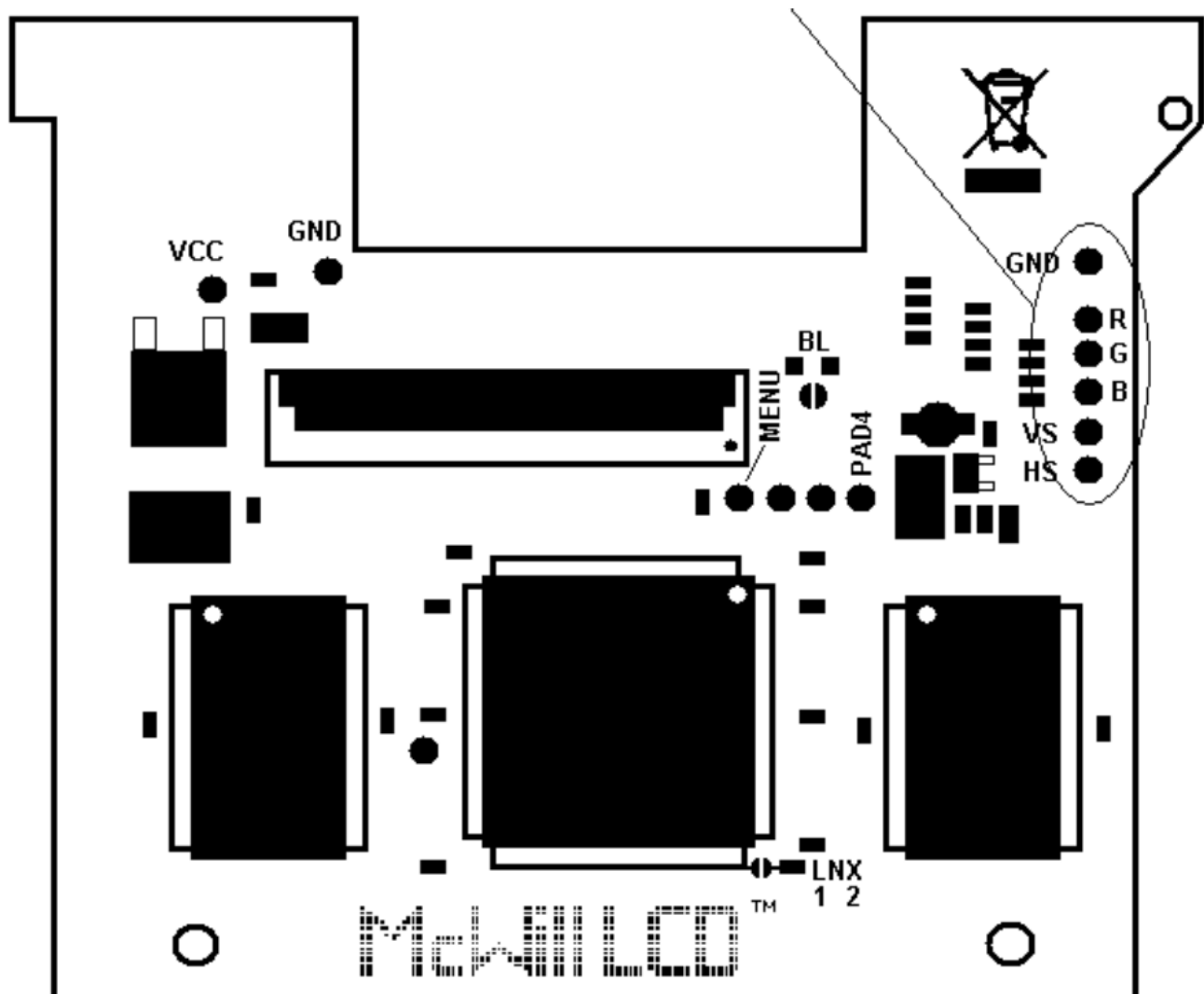
VGA connector (if needed)



Connect the pins 6, 7 and 8 together. Solder 6 wires to the pins 1, 2, 3, 13, 14 and (6, 7, 8) to the VGA connector.



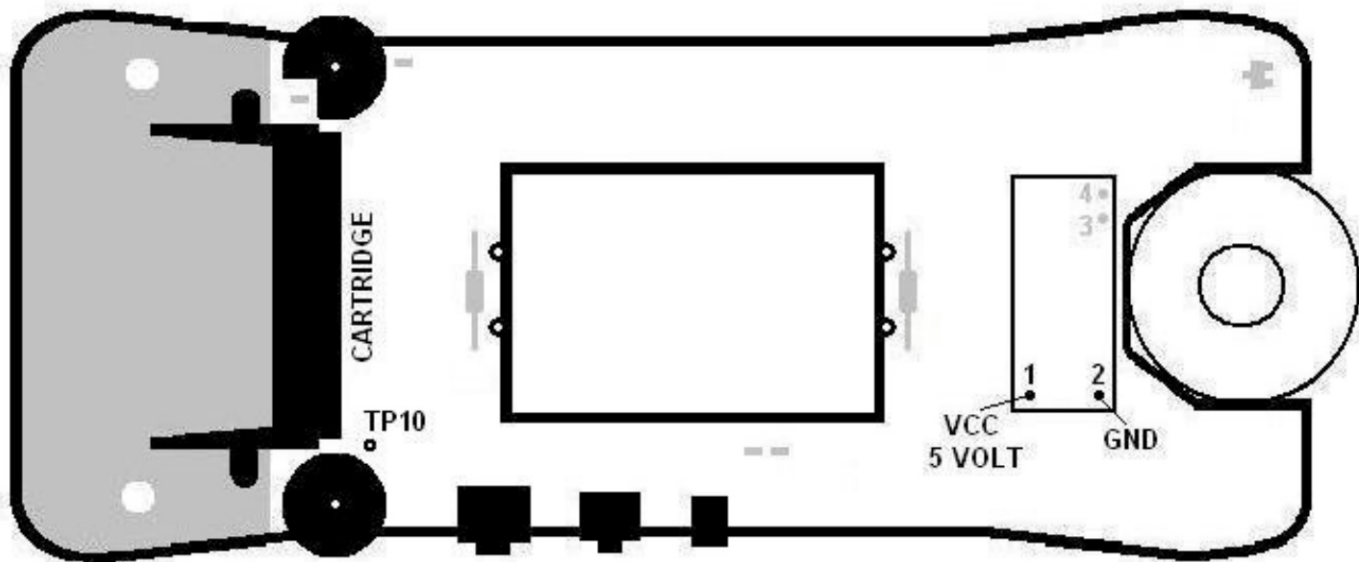
After that you solder the other side of the wires to the LYNX mod.



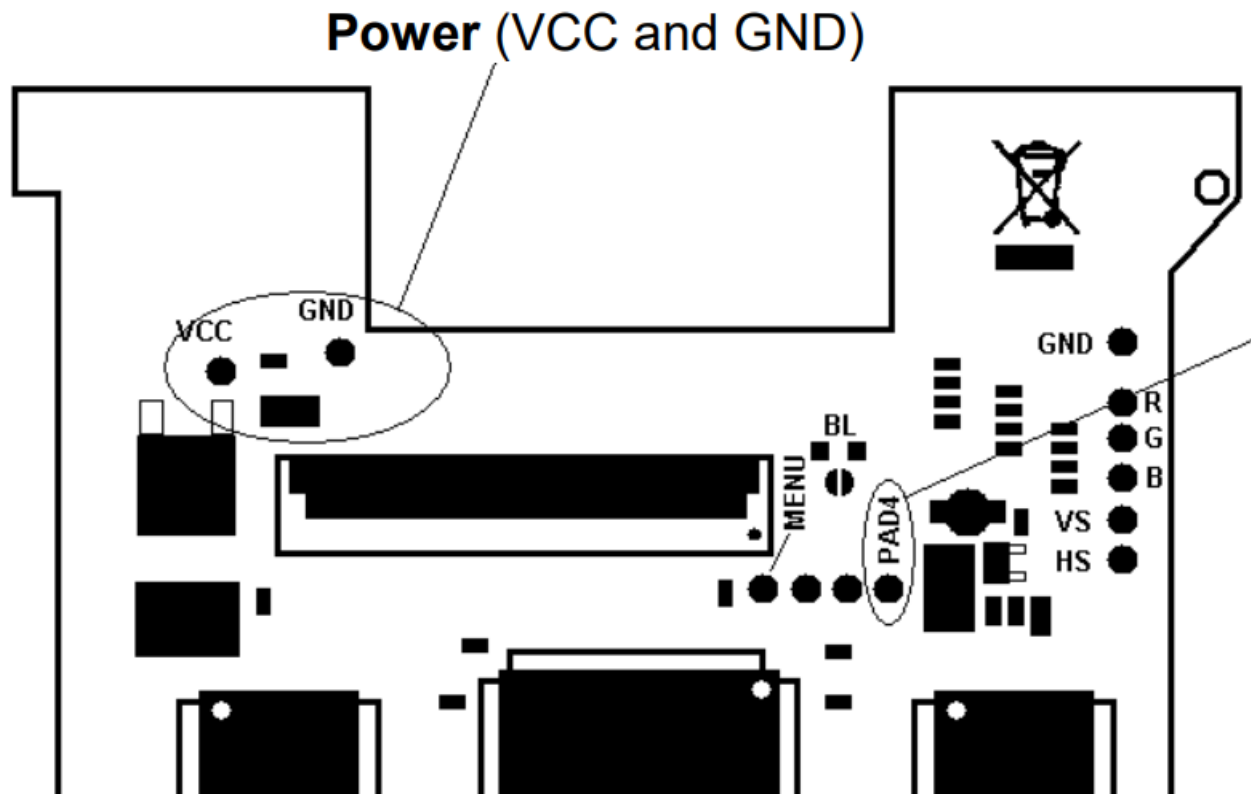
!!! Use hot glue for the internal screws of VGA connector. Otherwise the screws may cause short circuit !!!

Power and backlight button

Now solder one wire to VCC (+5 Volt) and one wire to GND (Ground).



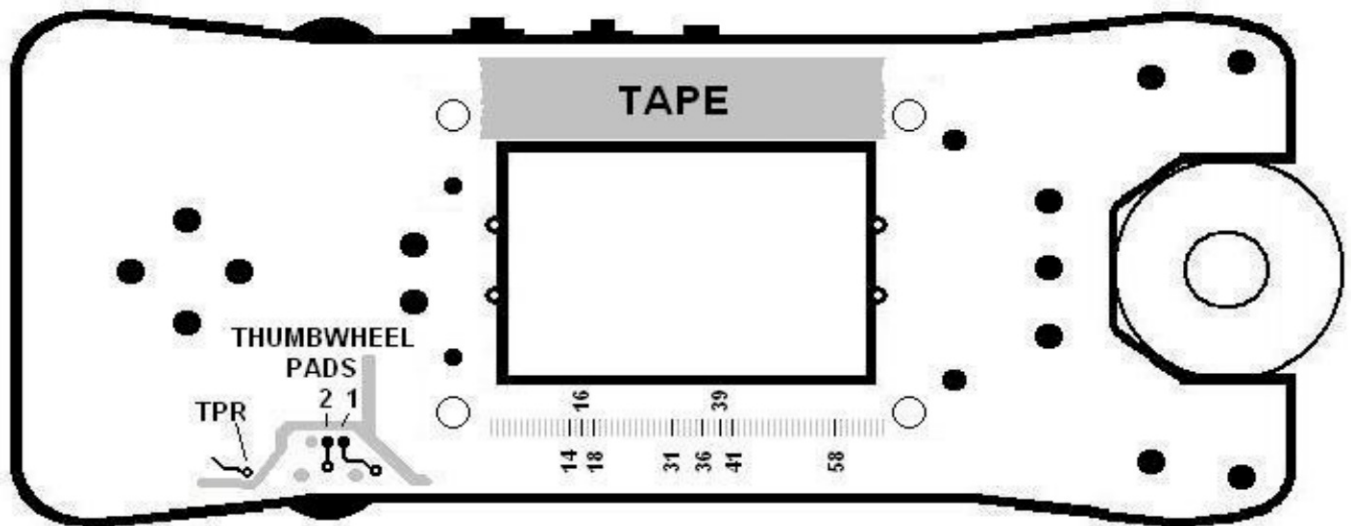
For controlling the backlight by thumbwheel you have to solder 2 wires from the thumbwheel pad 1 and pad 2 to the square pads of BL. Otherwise solder a solder blob onto BL.



Solder PAD 4 on the right to TP10.

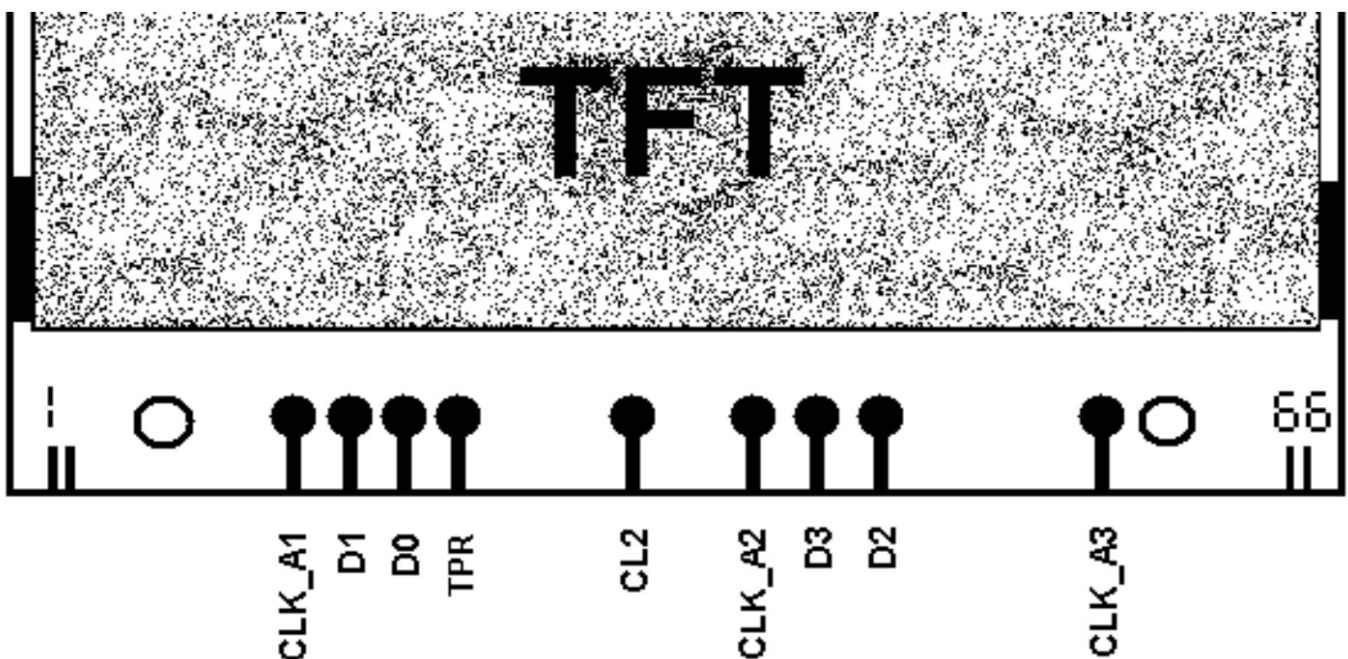
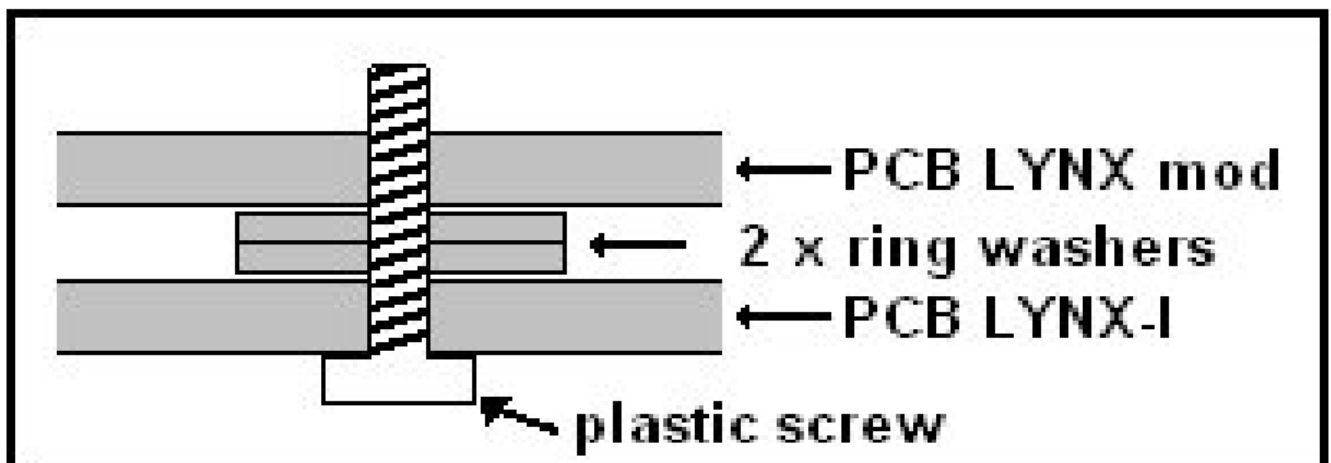
If you DON'T want to install the VGA connector, you can put a solder blob onto the MENU pad 1. Then you only have two selectable modes (only internal LCD) by pressing "PAUSE" for longer time. Otherwise: 1. Internal LCD; 2. Same as 1 with retro-style 3. VGA; 4. VGA with scanlines

Soldering data lines



Solder 8 small wires (2 cm) to the LYNX PCB at pin 14, 16, 18, 31, 36, 39, 41 and 58.


Now use the white plastic of the old LCD to make 8 ring washers. Take the 4 screws and fix the LYNX mod to the LYNX PCB. Adjust the LYNX mod exactly!



Then solder these 8 wires from the LYNX to the LYNX mod. The last wire is TPR.

!!! At last check all connections again !!!
If you made everything correct, you'll love it!
3.5" LCD / VGA selection: Press "PAUSE" long time and you can switch to different modes.

Documents / Resources

	<p>McWill LYNX-I LCD Replacement MOD [pdf] User Guide LYNX-I LCD Replacement MOD, LYNX-I, LCD Replacement MOD, Replacement MOD</p>
---	--