



Contents [[hide](#)]

- [1 MCombo 6160-MR097 Push Back Recliner](#)
- [2 SAFETY GUIDELINES](#)
- [3 Product Parameters](#)
- [4 Part List](#)
- [5 ASSEMBLY INSTRUCTIONS](#)
- [6 CARE AND MAINTENANCE](#)
- [7 WARRANTY](#)
- [8 RETURN/ REPLACEMENT POLICY](#)
- [9 MCOMBO CUSTOMER SUPPORT](#)
- [10 Frequently Asked Questions](#)
- [11 Documents / Resources](#)
 - [11.1 References](#)



MCombo 6160-MR097 Push Back Recliner



Newacme LLC, 2808 Vail Ave, Commerce, CA, 90040

sales@mcombo.com

1-[323-597-1109](tel:323-597-1109) 8.00 am, 4pm. TIME ZONET PST



[Mcombo.com](https://mcombo.com)



Amazon.com/mcombo

NEWACME LLC

www.mcombo.com / sales@mcombo.com

Hello,

Thank you for choosing MCombo Let's get started

PURCHASER'S AGREEMENT

By accepting delivery of this product, you promise that you will not change, alter, or modify this product or remove or render inoperable or unsafe any guards, shields or other safety features of this product.

You will not refuse or neglect any retrofit kits that MCombo may provide to enhance and

preserve the safe use of this product.

SAFETY GUIDELINES

Mandatory

Read the safety and other instructions thoroughly before using your MCombo® product. Failure to follow the guidelines, warnings in this manual and those located on your product can result in personal injury or product damage and will void the product warranty. Keep this manual for future reference.

Warning

- Weight Capacity: 300 lbs.
- Do not use outdoors. INDOOR USE ONLY.
- To avoid tip over, do not put your weight against the back of the chair.
- Do not stand, sit, or place extra weight on the arms, back or open footrest.
- Do not use this product if it is damaged. Do not use attachments or substitute parts.
- Avoid exposing upholstered chair to burning cigarettes or cigars, open flames, and high temperatures.
- Closely supervise children and disabled persons using this product.
- To reduce the risk of head entrapment and other injuries, keep children and pets away from openings and moving parts in and around furniture.
- The chair is intended for a single occupant, not exceeding 300 pounds.
- Do not operate the chair with more than one occupant in or on any part of the chair.
- If you give this product to someone else, must include this owner's manual.

Symbols Information

The symbols below represent labels used on the product to identify warnings, mandatory actions, and prohibited actions. It is especially important for you to read and understand these symbols completely. Do not remove these labels from your product. Please note that not all the symbols may be used on your chair.



Disclaimer

Make sure that you read this manual completely before assembling and operating your new product. We are not and cannot be held responsible for any damage or injury incurred due to improper or unsafe use of the MCombo Push Back Recliner. We specifically disclaim responsibility for any bodily injury or property damage that may occur during any use that does not comply with applicable federal, state, or local laws or ordinances.

Notice

- Please read these instruction thoroughly before using.
- Please contact us immediately if anything is missing or damaged.

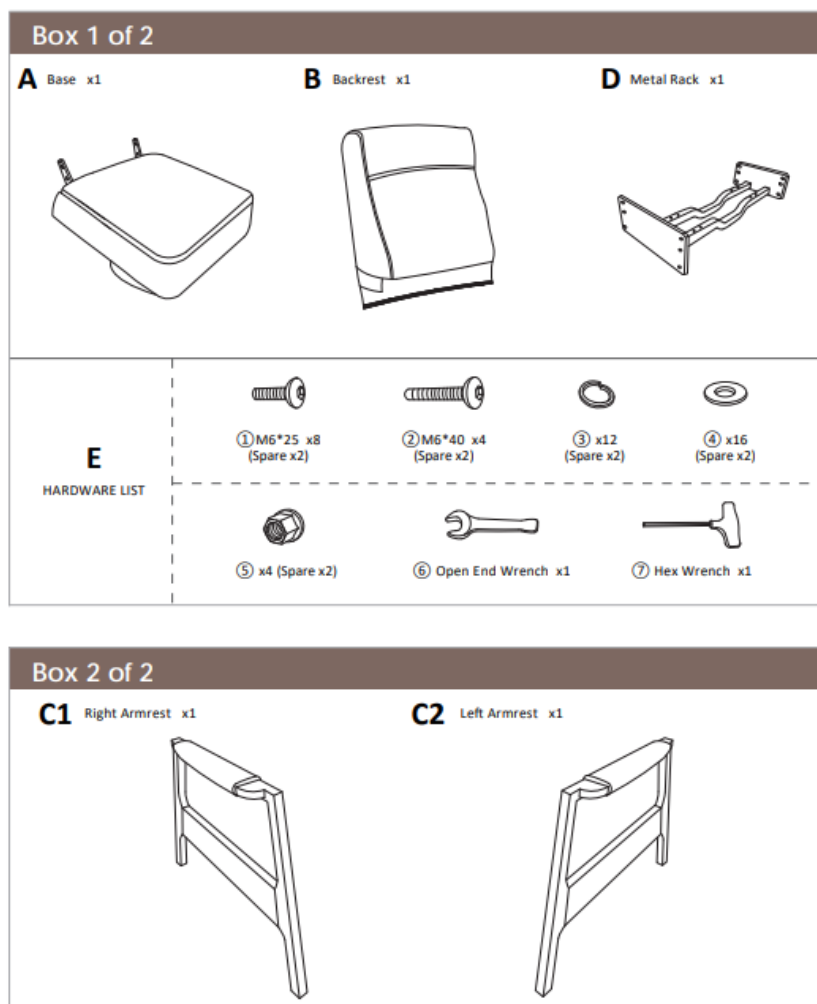
Product Parameters

Specification	Description
Model No	6160-MR097
Overall Dimension	28.3"(W)×37.4"(D)×43.7"(H)
Max Reclining Angle	135°
Weight Capacity	300lbs
Package Quantity	2

Part List

Notice

Use MCombo parts only for all replacements.

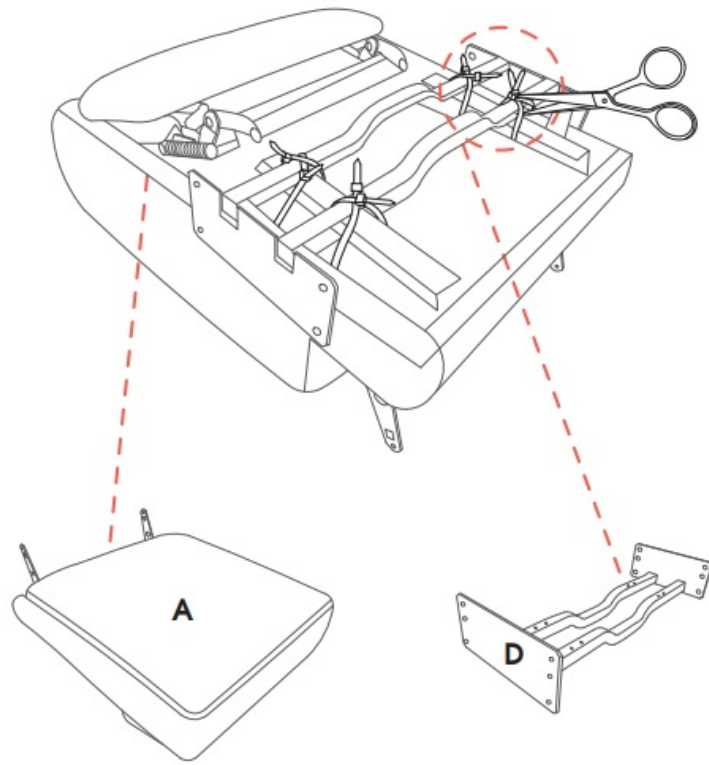


ASSEMBLY INSTRUCTIONS

Assembly Steps

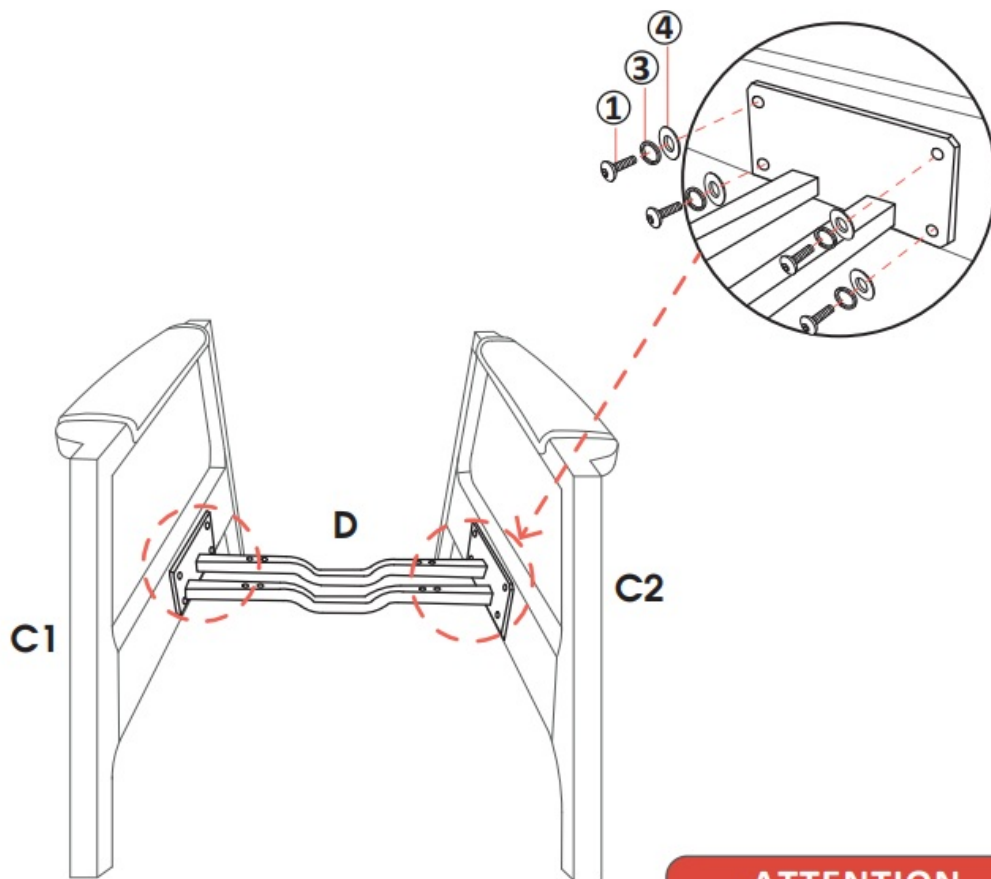
Step1 – Remove the Metal Rack

Cut the cable ties and remove the metal rack from the base.

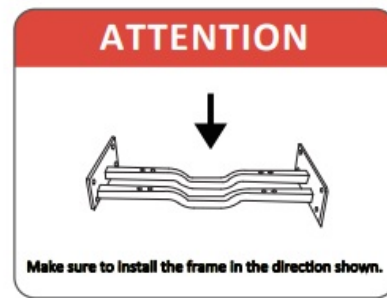


Step 2 – Armrest Assembly

1. Flip over the armrest.
2. Screw four sets of ① ③ ④ into the preset holes at the armrest and metal rack.
3. Make sure the screw is properly screwed in then tighten them.
4. Repeat above 3 steps for the other armrest.
5. Flip over the armrest until the end of Step 3.

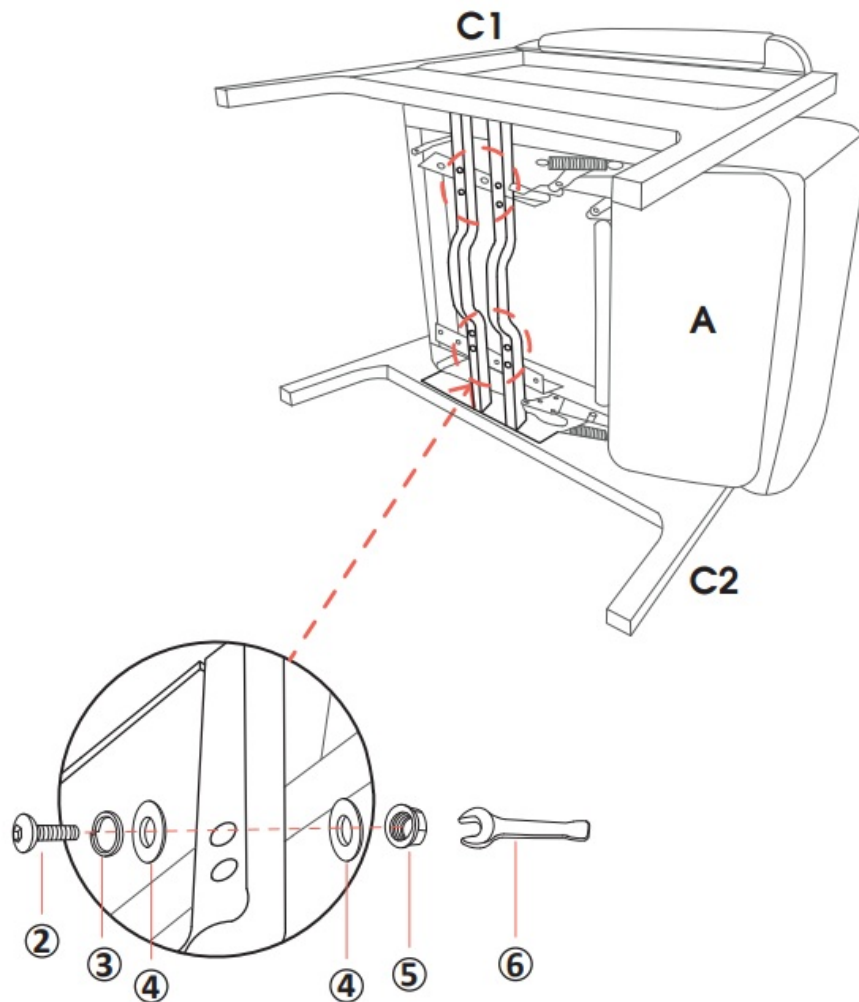


NOTE: Do not install the metal rack in the opposite direction.



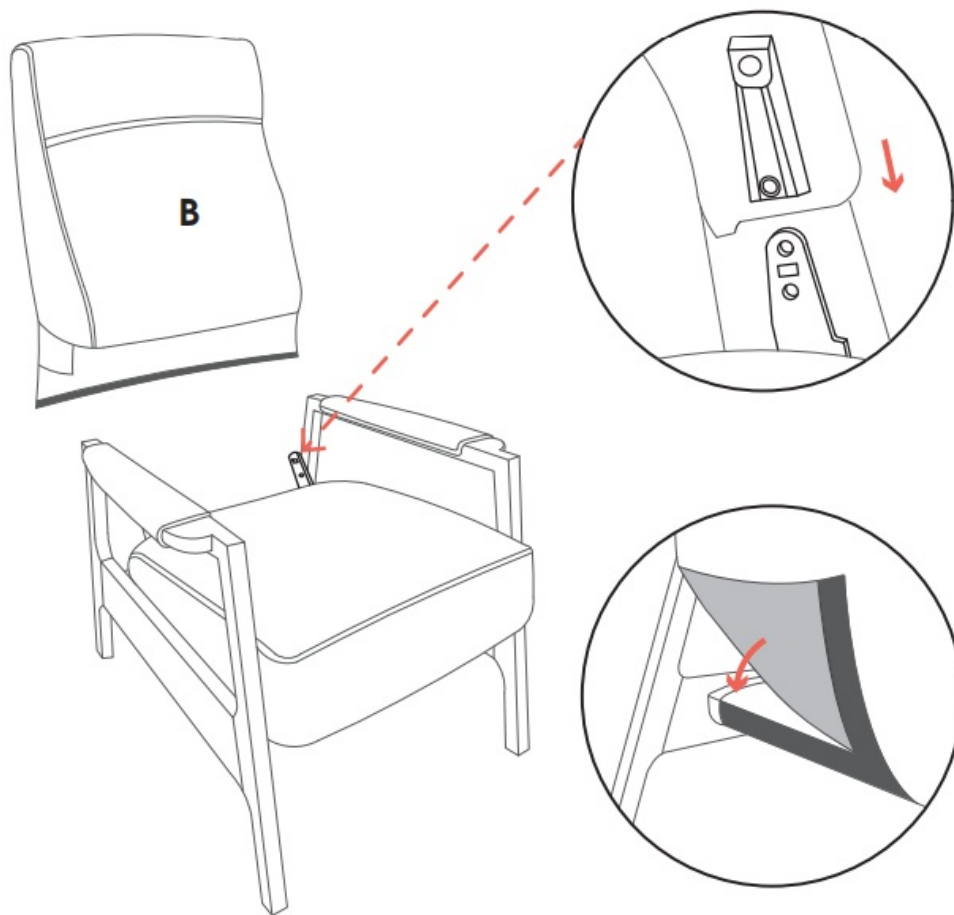
Step3 – Base Assembly

1. Screw the ② ③ ④ ⑤ into the preset holes at the base rack and metal rack.
2. Use the open end wrench lock the ⑤, then use the hex wrench screw the ② into the preset holes to tight.
3. Repeat above step for the other three preset holes.
4. Make sure the screw is properly screwed in then tighten them.



Step4 – Backrest Assembly

1. Align the brackets of the backrest at the clips of the seat-back (Figure).
2. Push firmly the brackets into the seat-back. Listen for a “click” on each side to ensure the backrest is locked in properly.
3. Put the Velcro of the backrest and paste it well to the base.



Step5 – Final Check

1. Make sure the metal rack is mounted lightly on the armrest.
2. Make sure the metal rack is mounted lightly on the base rack.
3. Make sure the backrest inserts are locked to the base.

CARE AND MAINTENANCE

Your MCombo product will provide years of superior performance and satisfaction with regular care and maintenance. To maintain the finish quality of your “assistant”, please follow the guidelines and cleaning procedures provided below.

Notice

- Do not smoke cigarettes while seated in or using your chair.
- Avoid extreme changes in temperature by arranging chair away from radiators, heat and air vents.
- Do not use solvent-type cleaners to spot clean.
- Please be careful that pet scratch may cause fabric or leather break.

Fabric Care

- Inspect the fabric on a regular basis for any pulls, tears, or gaps.
- Frequent vacuuming or light brushing with a nonmetallic, stiff bristle brush to remove dust and grime is recommended.
- When liquid spills onto the fabric, please immediately wipe off liquid spills with a dry or lightly dampened clean white cloth, sponge, or paper towel.

Wood Part Care

- Keep the wood part from a fireplace and heating and cooling vents; away from moisture sources, such as humidifiers; and out of direct sunlight.
- Daily exposure to heat or sunlight may fade the wood finishes and dry the wood, which can create cracks over time.

Metal Care

- Avoid bumping, and handle gently when moving.
- Do not fold too fast to ensure that the folded part is not damaged.
- Avoid placing chairs in damp places, avoid cleaning metal furniture with boiling water, wipe with a damp cloth, but do not rinse with running water.

Disposal & Recycling

Your Push Back Recliner must be disposed of according to applicable local and national statutory disposal regulations. Contact your local waste disposal agency for information on proper disposal of recliner sofa packaging, metal/wood frame components, fabric, and electronic components.

WARRANTY

Notice

- For product beyond the limited manufacturer warranty period and scope, MCombo® can also provide replacement service, but a basic charge will be charged according to the circumstances.

- The warranty only applies to MCombo® products and does not include any accessories or enhancements.
- Warranties are only valid in the 48 contiguous United States and are contingent upon the consumer operating the product according to the corresponding instruction manual.

Reclining Mechanism	★ 1 Year
Upholstery Material	★ 1 Year
Metal/ Wood Chair Frame	★ 1 Year
Electronic Parts	★ 1 Year

CONSUMER WARRANTY LIMITATIONS AND EXCLUSIONS

All warranties begin on the date of delivery.

All warranties are to the original purchaser from MCOMBO® ONLY.

- MCOMBO® will replace the defective parts or send a replacement product provided that the warranty parts have not been subjected to misuse, abuse or improper service by the consumer, for example, damaged wire arising in consequence of negligence or improper operation.
- Exclusions also include components with damage caused by:
 - Contamination
 - Abuse, misuse, accident, or negligence
 - Commercial use, or use other than normal
 - Improper operation, maintenance, or storage

NOTE:

MCOMBO® will pay standard shipping rates on all warranted parts for the first year. We can also sell you replacement part for a discount price when your product is out of warranty policy.

RETURN/ REPLACEMENT POLICY

Notice

Why don't we recommend returning the item by yourself?

- Huge cost- UPS/FedEx oversize fee.
- Need you to take the box to UPS/FedEx facility.

Return/ Replacement Policy

MCOMBO®

All of product come with a 30-day return/replace policy. During this time, we will cover the shipping cost of return and replacement for defective and damaged product, through providing pre-paid return label or pick-up service for customer convenience.

NOTE:

- Please keep the original packaging in case the product needs to be returned. If the original packaging is not available, the newly found packaging needs to meet the following size standard:
- UPS/FedEx packaging size standard: (width+ height) * 2+ length< 128 inch.
- Please disassemble the product before you return it, otherwise there will be a huge cost as oversized and it could even exceed your order amount.
- Please do not purchase return label for a damaged/defective product by yourself.
- If you have any problem to return the product, please contact us immediately, we will do our best to help you with a reasonable solution.

MCOMBO CUSTOMER SUPPORT

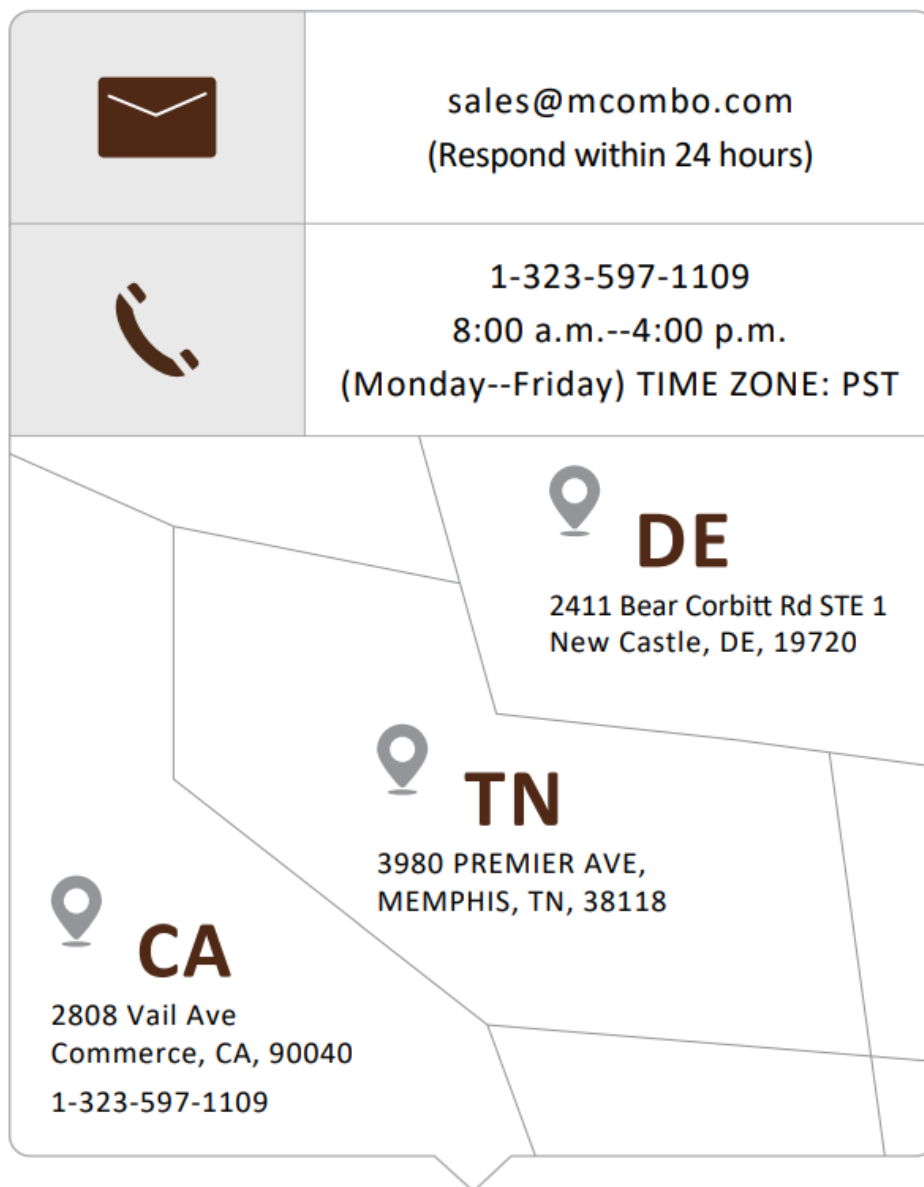
If for any reason, we have fallen short of your expectations, or if you have any questions and suggests, please refer to the following contact information. we will do our best to work with you to make sure you are entirely satisfied.

sales@mcombo.com (Respond within 24 hours)

1-[323-597-1109](tel:3235971109)

8:00 a.m.—4:00 p.m.

(Monday–Friday) TIME ZONE: PST



Frequently Asked Questions

- **Q: What is the weight capacity of the recliner?**

A: The weight capacity of the recliner is 300 lbs. It is important not to exceed this weight limit for safety reasons.


- **Q: Can pets be near the chair base?**

A: It is advised to keep pets away from the chair base to prevent any accidents or damage to the product.

- **Q: Is the recliner suitable for outdoor use?**



A: No, the recliner is designed for indoor use only. Using it outdoors may lead to damage or deterioration of the product.

Documents / Resources

	MCombo 6160-MR097 Push Back Recliner [pdf] Owner's Manual 6160-MR097 Push Back Recliner, 6160-MR097, Push Back Recliner, Back Recliner, Recliner
---	---

References

- [User Manual](#)

 6160-MR097, 6160-MR097 Push Back Recliner, Back Recliner, MCombo, Push Back Recliner,  MCombo Recliner

Leave a comment

Your email address will not be published. Required fields are marked *

Comment *

Name

Email

Website

☐ Save my name, email, and website in this browser for the next time I comment.

Post Comment

Search:

e.g. whirlpool wrf535swhz

Search

[Manuals+](#) | [Upload](#) | [Deep Search](#) | [Privacy Policy](#) | [@manuals.plus](#) | [YouTube](#)

This website is an independent publication and is neither affiliated with nor endorsed by any of the trademark owners. The "Bluetooth®" word mark and logos are registered trademarks owned by Bluetooth SIG, Inc. The "Wi-Fi®" word mark and logos are registered trademarks owned by the Wi-Fi Alliance. Any use of these marks on this website does not imply any affiliation with or endorsement.