



MCHOSE Z75 Three Mode Mechanical Keyboard User Guide

[Home](#) » [MCHOSE](#) » MCHOSE Z75 Three Mode Mechanical Keyboard User Guide 

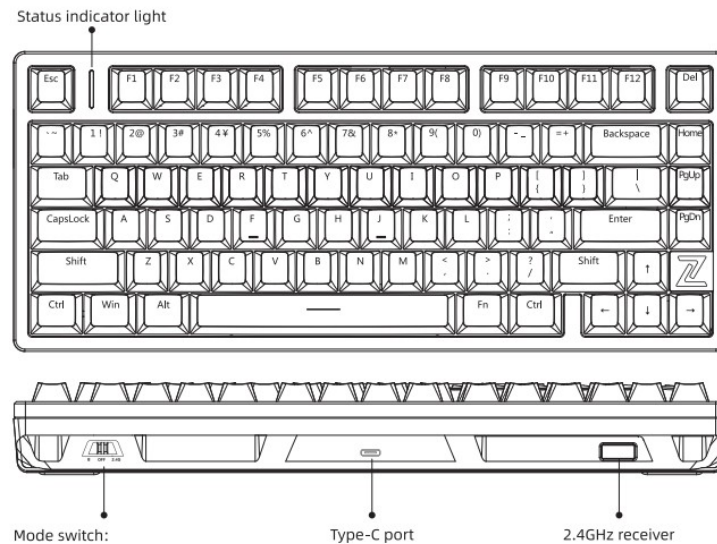
MCHOSE

MCHOSE Z75 User Guide
MECHANICAL KEYBOARD



Contents

- 1 Z75 Three Mode Mechanical Keyboard
- 2 2.4 GHZ CONNECTION
- 3 WIRELESS CONNECTIVITY
- 4 WIRED CONNECTION
- 5 POWER SAVING MODE
- 6 LIGHT EFFECT DESCRIPTION
- 7 POWER DISPLAY
- 8 CHARGING
- 9 SPECIFICATIONS
- 10 Documents / Resources
 - 10.1 References



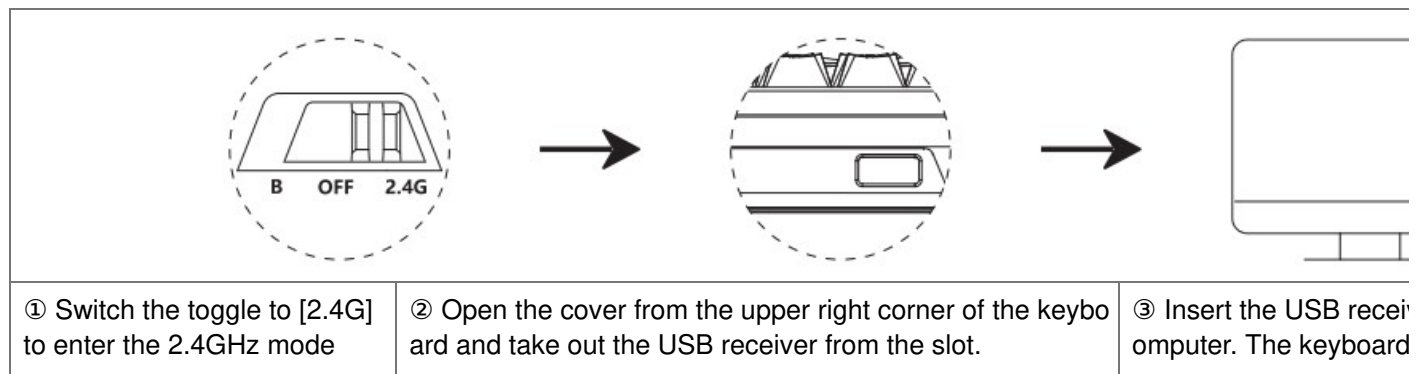
1. The left position [8] indicates wireless mode
2. The middle position [OFF] indicates USB wired mode
3. The right position [2.4G] indicates the 2.4G mode

Keyboard turning off: Switch the toggle to [OFF] and unplug the cable to disconnect.

Keyboard return rate: Wired mode 1000Hz, 2.4GHz mode 1000Hz, wireless mode 125Hz

Note: The images in this manual are all schematic diagrams and may deviate from the actual product. Please refer to the actual product for accuracy.

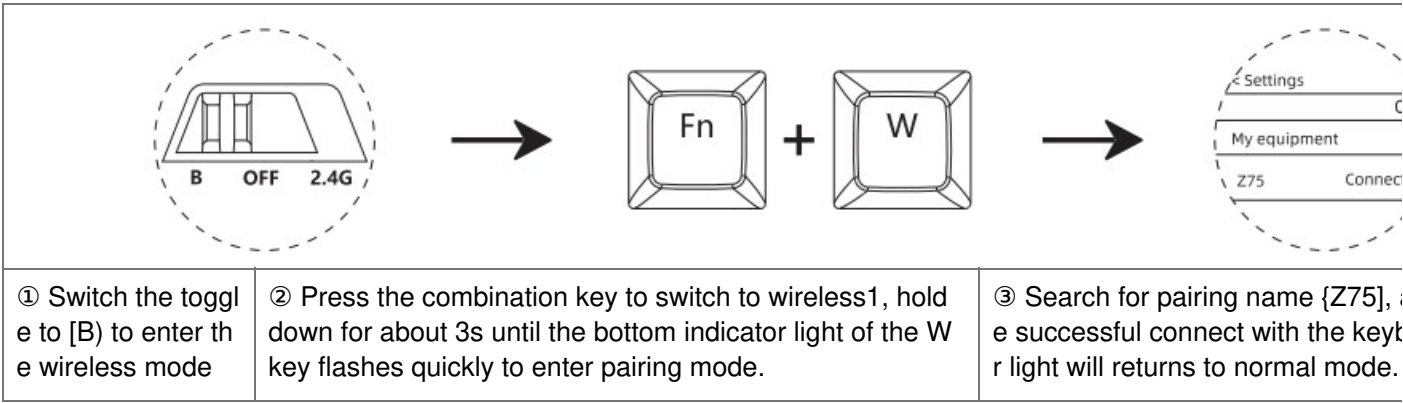
2.4 GHZ CONNECTION



- Manual code pairing: Turn the upper switch to [2.4G mode] , then press the combination key [FN+Q] until the indicator light at the bottom of the Q key flashes quickly to enter the code pairing state. At this time, insert the USB receiver into the computer port, and after successful connection, the keyboard will restore the backlight effect, completing the code pairing.

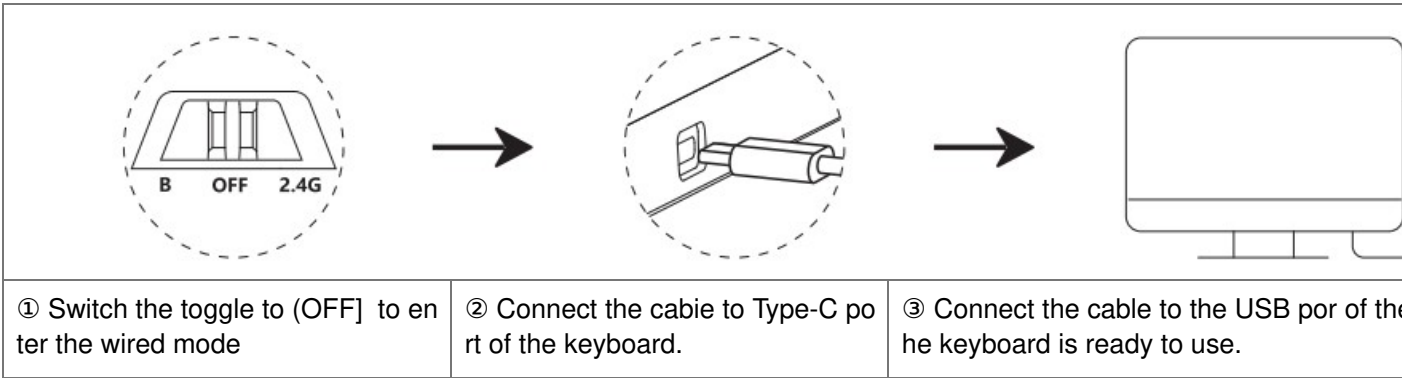
Note: First, put the keyboard into 2.4G pairing mode, and then plug the USB receiver into the computer; When checking the code, it is necessary to place the keyboard close to the receiver.

WIRELESS CONNECTIVITY



- The pairing names for wireless channels 1, 2, and 3 are all [Z75] .
- The combination key for wireless channel 2 is [Fn+E] ; The combination key of wireless channel 3 is [Fn+R] ;
- Long press the combination key for about 3 seconds until the corresponding wireless channel indicator light flashes quickly, indicating that the keyboard has entered pairing or search mode, and can be paired and connected in the device;
- Press the combination keys Fn+W, E, or R to switch devices.

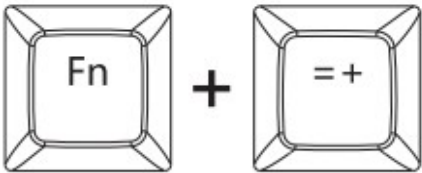
WIRED CONNECTION



POWER SAVING MODE

The keyboard automatically enters power-saving mode without any operation for one minute in wireless/2.4G mode.
Click the button to wake up the keyboard.

LIGHT EFFECT DESCRIPTION



The combination key can switch 17 RGB lighting effects:
 Constant light mode – Breathing mode – Fantasy rainbow – Ready to ignite – Walking in the rain – Rainbow wheel – Button tinkle – Star dots – Flowing continuously-
 Follow the Current (default) – Follow the Shadow – Dazzling Light Wave – Rotating Windmill – Colorful Waterfall – Blossoming Wealth – Game Mode (default four directional keys
 9 keys for W/A/S/D and ESC to light up blue light (with driver to achieve customized button light color) – turn off the light.

FN KEY COMBINATION DESCRIPTION

Fn +	Esc	A	5	Q	W	E
	Long press for 3s to restore factory settings	MAC system	WIN system	Long press 35 Enter the 2.4G Hz pairing mode	wireless device 1	wireless device 2
	R	=+	—	↑	↓	←
	wireless device 3	Backlight mode switching	Backlight color switching	Backlight brightness+	Backlight brightness-	Backlight speed-
	→	Left Shift	Z	Right Shift	/?	,<
	Backlight speed+	Status indicator light effect switching	Color switching of status indicator lights	Side light mode switching	Side light color switching	Side light brightness+
	.>	Win	B	P	[{	}]
	Side light brightness-	Lock/Unlock Win	Press and hold to check battery level	PrtSc	Scroll	Pause
	Del	Home				
	Ins	End				

- Fn+WinLock/Unlock Win Key (In Windows systems, the indicator light remains on when the Win key is locked, and the Win key cannot be used).
- In Windows system, if switching to MAC system mode, the Win and Left Alt keys will be swapped, and F1-F12 is the multimedia button function.
- Fn+wireless device 1, short press to switch, long press for 3 seconds to pair.
- Fn+E=wireless device 2, short press to switch, long press for 3 seconds to pair.
- Fn+R=wireless device 3, short press to switch, long press for 3 seconds to pair.

WINDOWS SYSTEM: FN KEY COMBINATION INSTRUCTIONS (MULTIMEDIA FUNCTIONS)

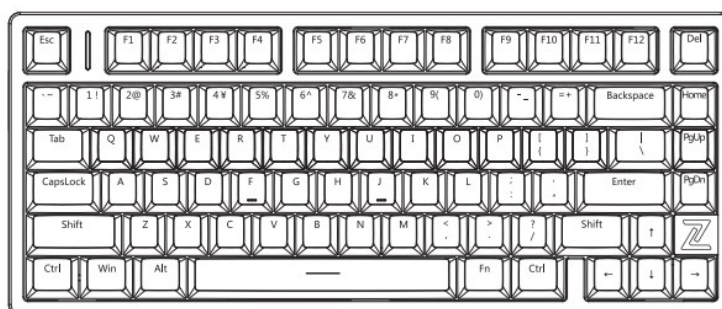
Key position	F1	F2	F3	F4	F5	F6
single press	F1	F2	F3	F4	F5	F6
Fn combination	Screen brightness –	Screen brightness +	Convert Window	Return to desktop	search	Screen capture
Key position	F7	F8	F9	F10	F11	F12
single press	F7	F8	F9	F10	F11	F12
Fn combination	Previous song	play / Pause	Next song	Mute	volume-	volume+

MAC SYSTEM: FN KEY COMBINATION INSTRUCTIONS (MULTIMEDIA FUNCTIONS)

Key position	F1	F2	F3	F4	F5	F6
single press	Screen brightness –	Screen brightness +	Convert Window	Return to desktop	Short press for search long press for Siri	Screen capture
Fn combination	F1	F2	F3	F4	F5	F6
Key position	F7	F8	F9	F10	F11	F12
single press	Previous song	play / Pause	Next song	Mute	volume-	volume+
Fn combination	F7	F8	F9	F10	F11	F12

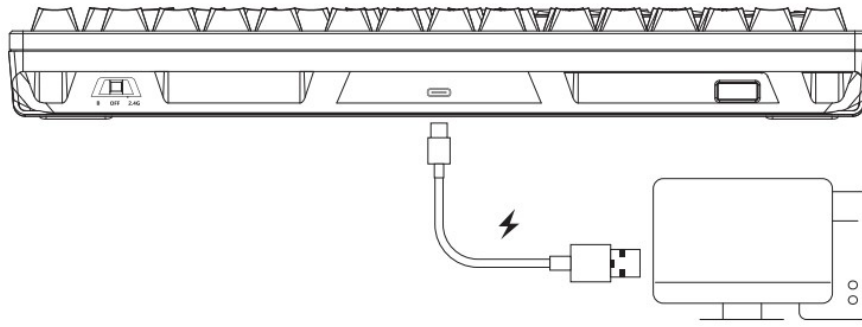
In the Windows system, after switching to the Mac system, the Win and Left Alt keys will be swapped.

POWER DISPLAY



- In 2.4GHz/wireless mode (without USB inserted), press and hold FN+B keys to check the battery power level. When fully charged, the number keys 1 to 0 will all light up with a green light. The green light for battery consumption gradually decreases, and when the battery power is low, the red light lights up. Release the FN+B keys to restore the light effect.

CHARGING



- Connect the keyboard to the computer through the equipped USB cable to charge the keyboard. When charging, the [status indicator light) shows the running horse, and when fully charged Restore normal light effects.
- When the status indicator light flashes red, please charge the keyboard in a timely manner.
- **Note:** When connecting to USB charging, the indicator light will run and display. At this time, pressing the combination key cannot switch the light effect and color of the {Status Indicator} .

SPECIFICATIONS

Product model: MCHOSE 2775

Connectivity: wireless/2.4GHz/Wired

Charging interface: Type-C

Charging voltage/current: DC 5V \Rightarrow 1.5A

NOTE: This equipment has been tested and found to comply with the limits for a Class B digital device, pursuant to part 15 of the FCC Rules. These limits are designed to provide reasonable protection against harmful interference in a residential installation. This equipment generates, uses and can radiate radio frequency energy and, if not installed and used in accordance with the instructions, may cause harmful interference to radio communications. However, there is no guarantee that interference will not occur in a particular installation. If this equipment does cause harmful interference to radio or television reception, which can be determined by turning the equipment off and on, the user is encouraged to try to correct the interference by one or more of the following measures:

- Reorient or relocate the receiving antenna.
- Increase the separation between the equipment and receiver.
- Connect the equipment into an outlet on a circuit different from that to which the receiver is connected.
- Consult the dealer or an experienced radio/TV technician for help.

Changes or modifications not expressly approved by the party responsible for compliance could void the user's authority to operate the equipment.

This device complies with Part 15 of the FCC Rules. Operation is subject to the following two conditions: (1) this device may not cause harmful interference, and (2) this device must accept any interference received, including interference that may cause undesired operation.

CHARGING INSTRUCTIONS

1. It is recommended to only use the computer USB interface to charge the keyboard;
2. Do not use a fast charging mobile phone charger to charge the keyboard;
3. Do not use inferior non-standard power adapters to charge the keyboard;
4. Do not use an overvoltage and overcurrent power adapter to charge the keyboard;
5. Please stay away from high-temperature equipment when charging;

6. Please turn off the power switch when not in use for a long time.

The above charging instructions also apply to other devices with charging functions (keyboard/mouse/headphones/speakers, etc.)

WARRANTY CARD

Thank you for purchasing our company's products. If there are any quality issues with the products during the warranty period, please contact us.

Please provide this warranty card when contacting us so that we can provide you with comprehensive after-sales service.

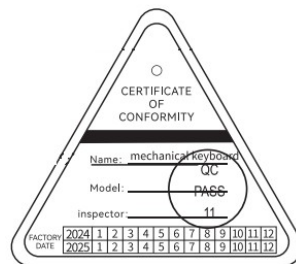
Product model: User Name:

Factory number: Warranty address:

Purchase date:..... Warranty contact person:

Purchase address: Contact phone number:

Salesperson: Postal Code:



Executive standard: GB4943.1-2022

MCHOSE

Documents / Resources

	<p>MCHOSE Z75 Three Mode Mechanical Keyboard [pdf] User Guide</p> <p>Z75, Z75 Three Mode Mechanical Keyboard, Three Mode Mechanical Keyboard, Mechanical Keyboard, Keyboard</p>
--	---

References

- [User Manual](#)

[Manuals+](#), [Privacy Policy](#)

This website is an independent publication and is neither affiliated with nor endorsed by any of the trademark owners. The "Bluetooth®" word mark and logos are registered trademarks owned by Bluetooth SIG, Inc. The "Wi-Fi®" word mark and logos are registered trademarks owned by the Wi-Fi Alliance. Any use of these marks on this website does not imply any affiliation with or endorsement.