

MCHOSE X75 V2 Keyboard User Guide

MCHOSE



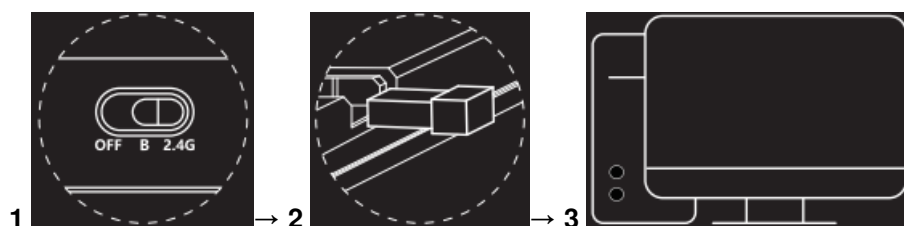
Contents

- [1 X75 V2 Keyboard Handy Guide](#)
- [2 Documents / Resources](#)
 - [2.1 References](#)
- [3 Related Posts](#)

X75 V2 Keyboard Handy Guide

- A:** Type-C Port
- B:** MODE SWITCH
 - 1. The top position is for 2.4G mode.
 - 2. The middle position is for Wireless mode.
 - 3. The bottom position is for Wired mode.
- C:** RGB status Light / Battery Indicator Light
- D:** Metal Magnetic Nameplate Hidden Storage for USB Dongle
- E:** Multimedia knob
 - Slide Up to Volume Up
 - Slide Down to Volume Down

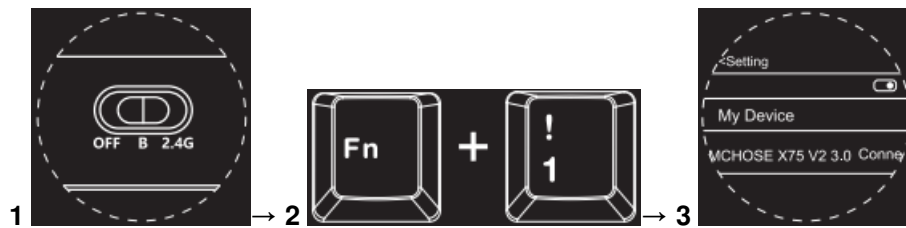
+2.4G WIRELESS CONNECTION



1. Switch the toggle to [2.4G] to enter the 2.4G mode.
2. Take out the USB dongle from the dongle slot.

3. Insert the USB dongle into the USB port of the computer.

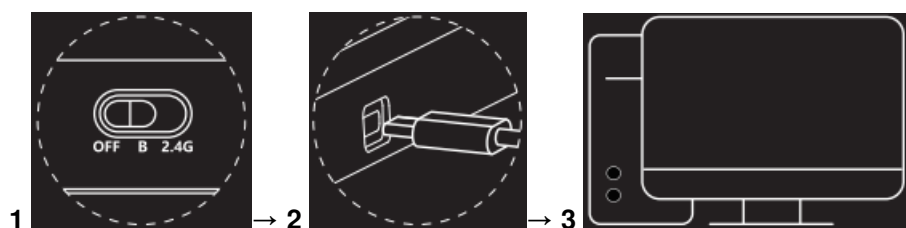
WIRELESS CONNECTION



1. Switch the toggle to [B] to enter the wireless mode.
2. Press and hold [FN + 1] to start pairing; the indicator light will flash quickly to activate wireless pairing.
3. • Search for the wireless device name [MCHOSE X75 V2 3.0] or [MCHOSE X75 V2] on your device, and click to connect, the wireless indicator light will go back to normal after successful pairing.

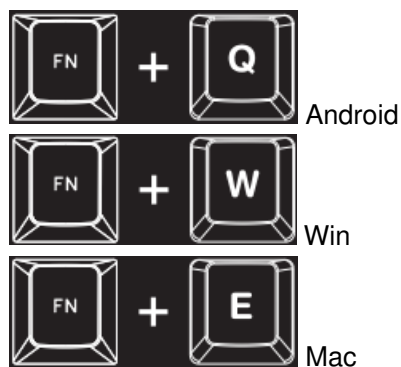
Note: Wireless 2 and Wireless 3 are connected in the same way as Wireless 1. Press the key [FN+2@] to switch to Wireless 2. Press the key [FN+3#] to switch to Wireless 3; When connecting, the blue light flashes slowly.

WIRED CONNECTION



1. Switch the toggle to [OFF] to enter the wired mode.
2. Connect the cable to the Type-C port of the keyboard.
3. Connect the cable to the USB port of the computer. The keyboard is ready to use.

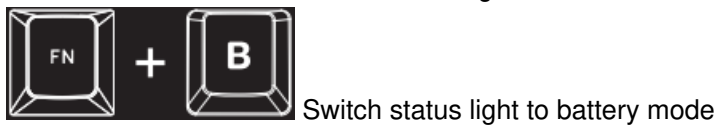
SYSTEM MODE SWITCH



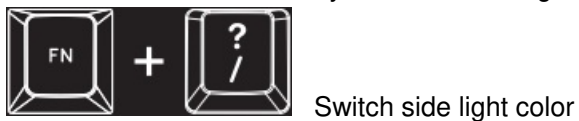
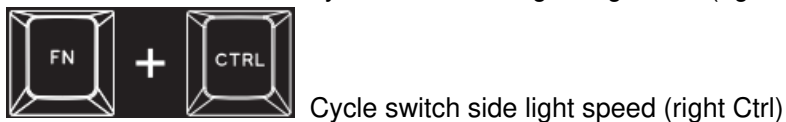
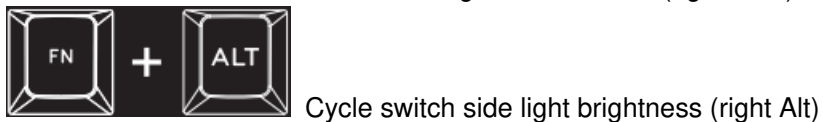
BACKLIGHT SETTING



STATUS LIGHT SETTING



SIDE LIGHT SETTING



Scan the QR code to view the electronic manual ⇒



Documents / Resources

	<p>MCHOSE X75 V2 Keyboard [pdf] User Guide X75 V2 Keyboard, X75, V2 Keyboard, Keyboard</p>
---	--

References

- [User Manual](#)

[Manuals+](#), [Privacy Policy](#)

This website is an independent publication and is neither affiliated with nor endorsed by any of the trademark owners. The "Bluetooth®" word mark and logos are registered trademarks owned by Bluetooth SIG, Inc. The "Wi-Fi®" word mark and logos are registered trademarks owned by the Wi-Fi Alliance. Any use of these marks on this website does not imply any affiliation with or endorsement.